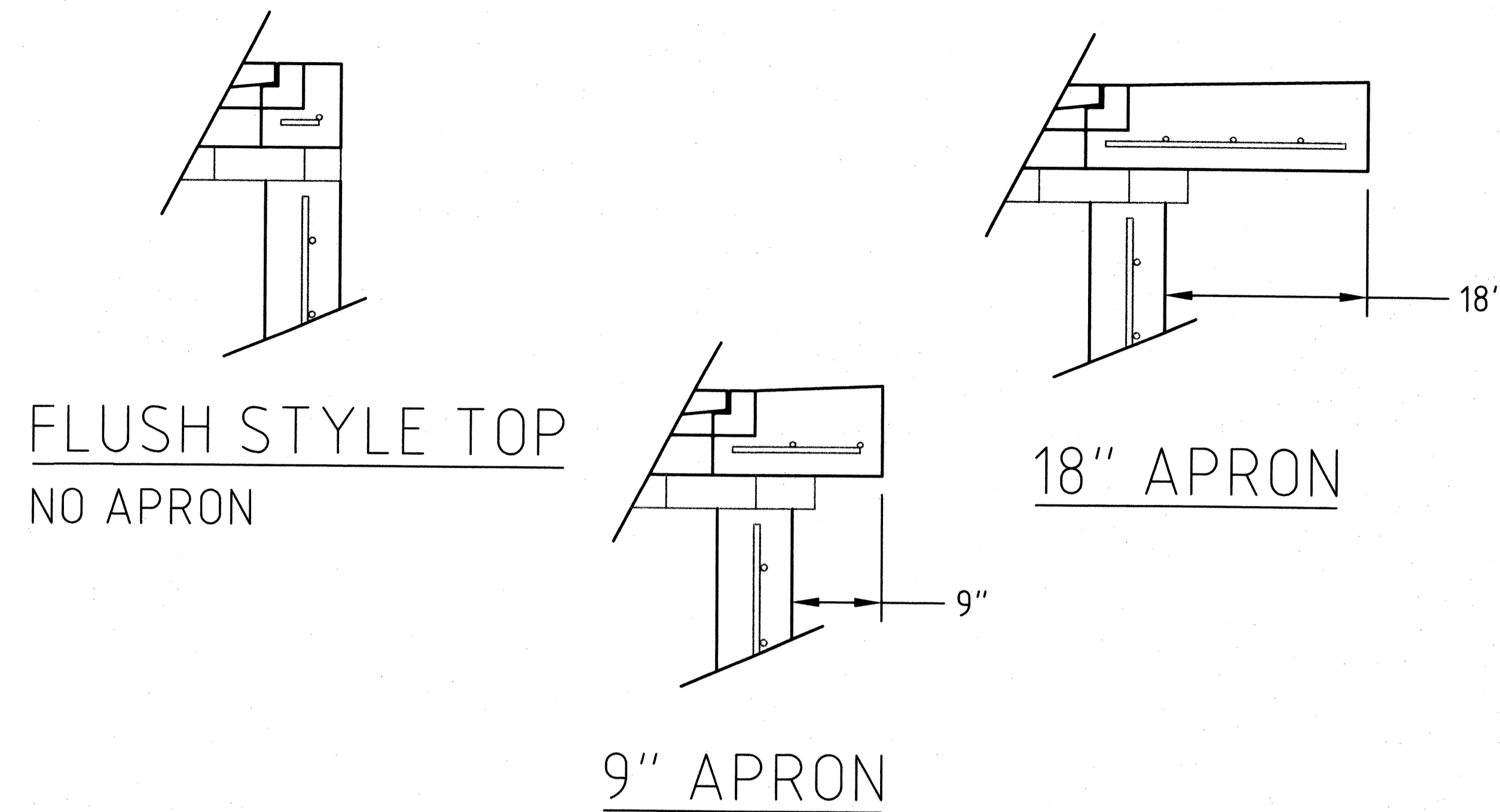


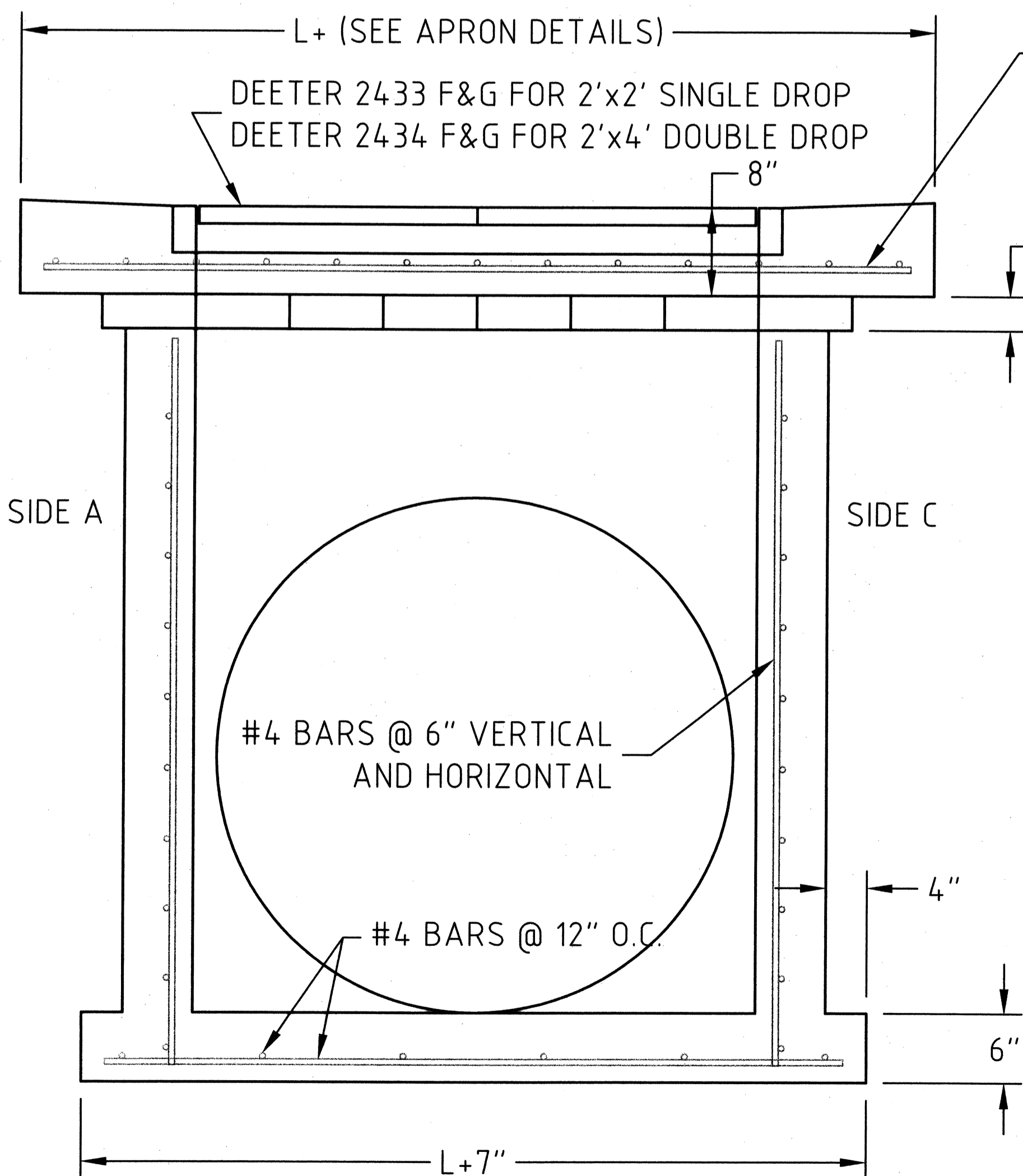
TOP VIEW



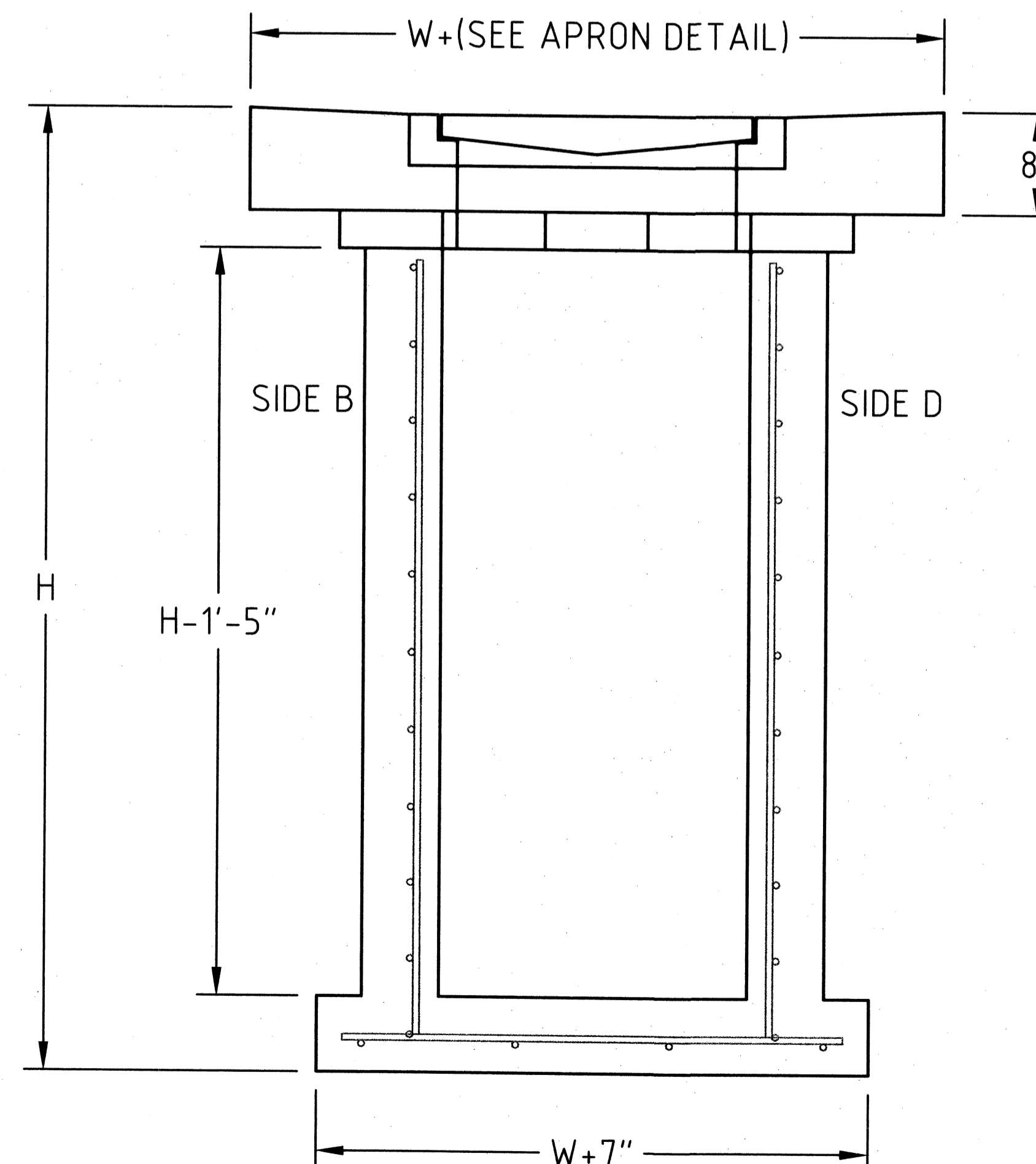
APRON TO EXTEND ON ALL 4 SIDES OF INLET

Technical drawing of the grate and frame with dimensions and a manufacturer's label for Deeter Foundry, Inc. The label includes:
 

- NOTE: 1. TWO GRATES REQUIRED FOR EACH FRAME. 2. OPEN AREA OF EACH GRATE IS 300 SQ. INCHES.
- MATERIAL: CAST GRAY IRON ASTM A-48, CLASS 35B
- FINISH: NO PAINT
- WEIGHT: 790 LBS.
- Deeter Foundry, Inc. LINCOLN, NEBRASKA 68529
- # 2434 CATCH BASIN INLET FRAME & GRATES
- DATE: 28 NOV 94
- SCALE: 1/8"
- DATE: 13 JUN 00



SECTION "A-A"



SECTION "B-B"

SINGLE DROP = 2' x 2' INSIDE  
 DOUBLE DROP = 2' x 4' INSIDE

Logo for WICHITA CONCRETE PIPE COMPANY and project information for CITY OF WICHITA DOUBLE DROP & SINGLE DROP AREA INLET.
 

- WCP WICHITA CONCRETE PIPE COMPANY
- 221 W. 37th St. North, Wichita, KS. 67204 (316)-838-8651
- SINGLE / DOUBLE DROP INLET
- CITY OF WICHITA DOUBLE DROP & SINGLE DROP AREA INLET
- C-11.6
- 4/18/00 TWL