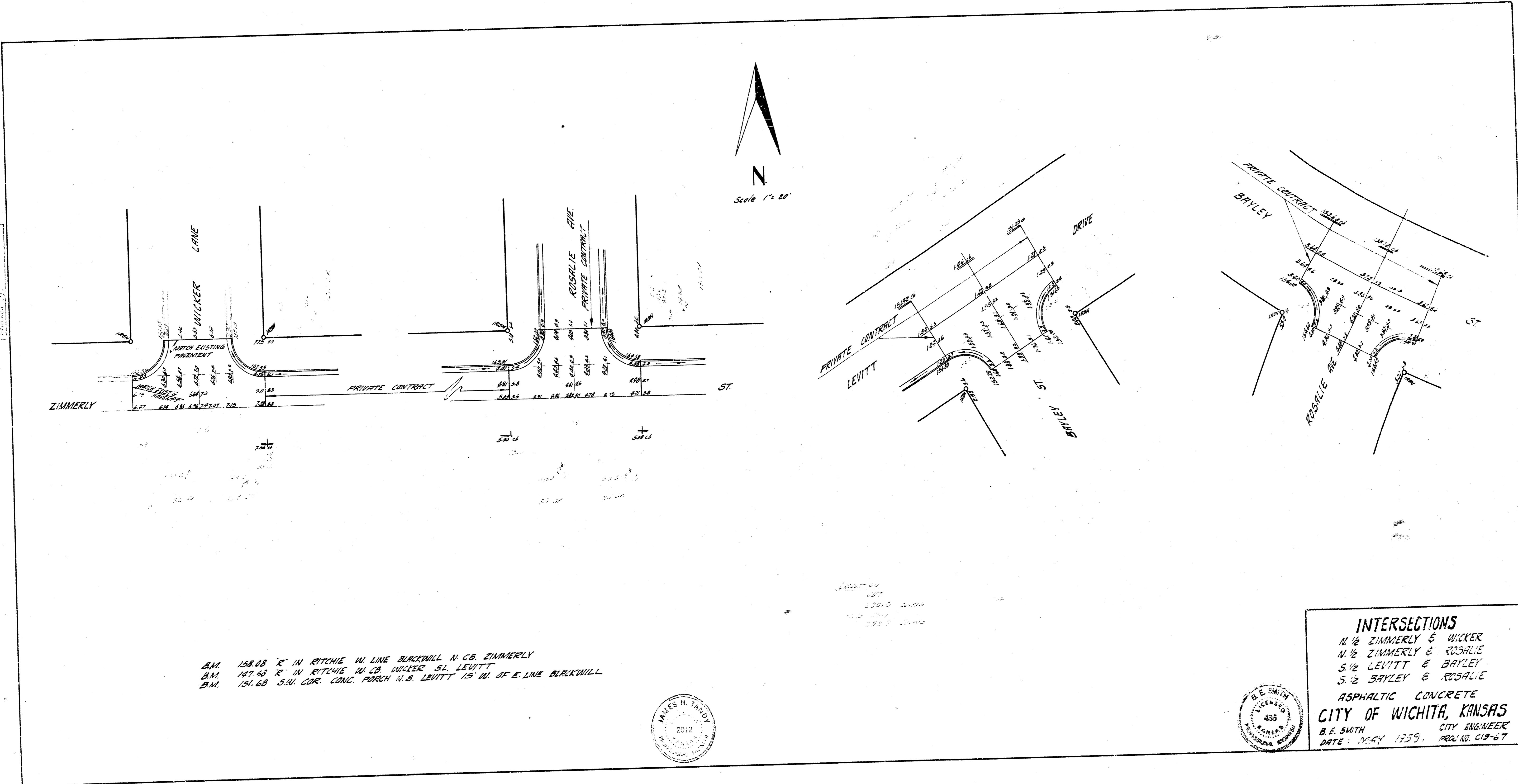


12.00' 11.00' 10.00'
 9.00' 8.00' 7.00'
 6.00' 5.00' 4.00'
 3.00' 2.00' 1.00'
 0.00'



B.M. 158.08 7' IN RITCHIE W. LINE BLACKWILL N. CO. ZIMMERLY
 B.M. 147.65 7' IN RITCHIE W. CO. WICKER S. LEVITT
 B.M. 101.68 S.W. COR. CONC. PARCH N.S. LEVITT 15' W. OF E. LINE BLACKWILL



INTERSECTIONS
 N 1/2 ZIMMERLY & WICKER
 N 1/2 ZIMMERLY & ROSALIE
 S 1/2 LEVITT & BAYLEY
 S 1/2 BAYLEY & ROSALIE
 ASPHALTIC CONCRETE
CITY OF WICHITA, KANSAS
 B. E. SMITH
 DATE: MAY 1959. PROJ. NO. 619-67