

INTERSECTION RECONSTRUCTION HILLSIDE AND HARRY

PHASE II

PROJ. NO. 472-72-245-81257-000-000-001

INDEX NO. 601666

GENERAL NOTES

A saw cut of at least one-half the depth of existing surface courses or one-fourth the depth of the existing total pavement thickness shall be provided at locations where proposed construction abuts an existing surface course or pavement for which partial removal of that surface or pavement is required. Sawed joint to facilitate removal within three (3) feet of existing joints will not be permitted and for such instances the limits of removal shall extend to the existing joint. Such saw cuts will not be paid for directly and this cost shall be considered as subsidiary to the removal of the surface or pavement.

Rubble from the removal of miscellaneous structures and excess excavation which is to be wasted shall be disposed of on sites to be provided by the Contractor. These sites shall be approved by the Engineer as to suitability, appearance and site location. Locations that, in the opinion of the Engineer, will leave an unsightly appearance will not be approved.

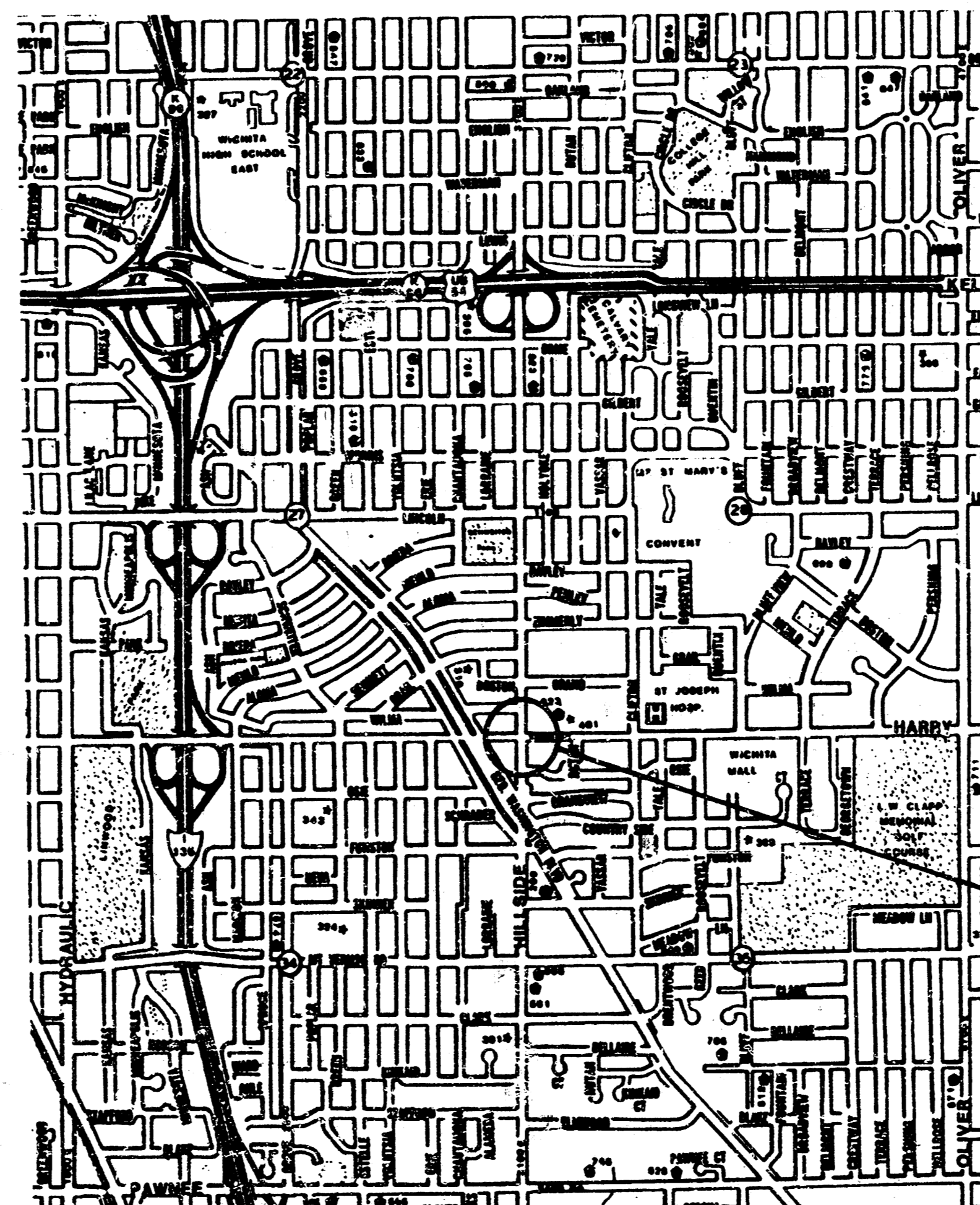
The Contractor shall adjust watervale boxes as shown on the adjustment table on the plans. All costs associated with adjustment of listed valve boxes shall be subsidiary to the project and not paid separately.

Utility service lines, poles, valve boxes, meters, etc. are to be adjusted as necessary by others prior to construction unless the plans specifically call for their adjustment by the contractor. Existing utilities and their location, as shown on the plans, represent the best information obtainable for design. Location information has been obtained from the various utility companies and is either from company record drawings or company provided field locations. The plan locations shown are not guaranteed. Additional existing utilities may also be encountered. The contractor will be required to work around existing utilities within the right-of-way which do not conflict with proposed construction.

HILLSIDE Center Line of Skinner to the South Line of Bayley
HARRY East Line of Hillside to the East Line of Rutan

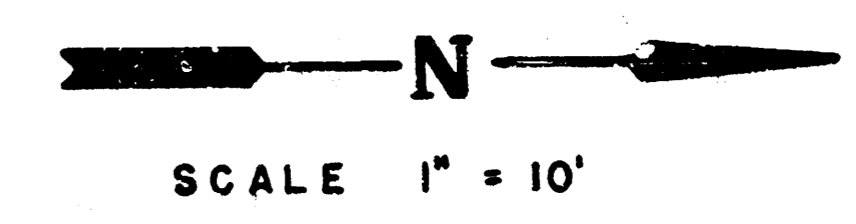
M.E. LINDEBAK - CITY ENGINEER
CITY OF WICHITA, KANSAS

SHEET No.	DESCRIPTION
1	TITLE SHEET
2	PAVING PLAN
3	PAVEMENT JOINTS & DETAILS
4	MARKING PLAN



PROJECT LOCATION



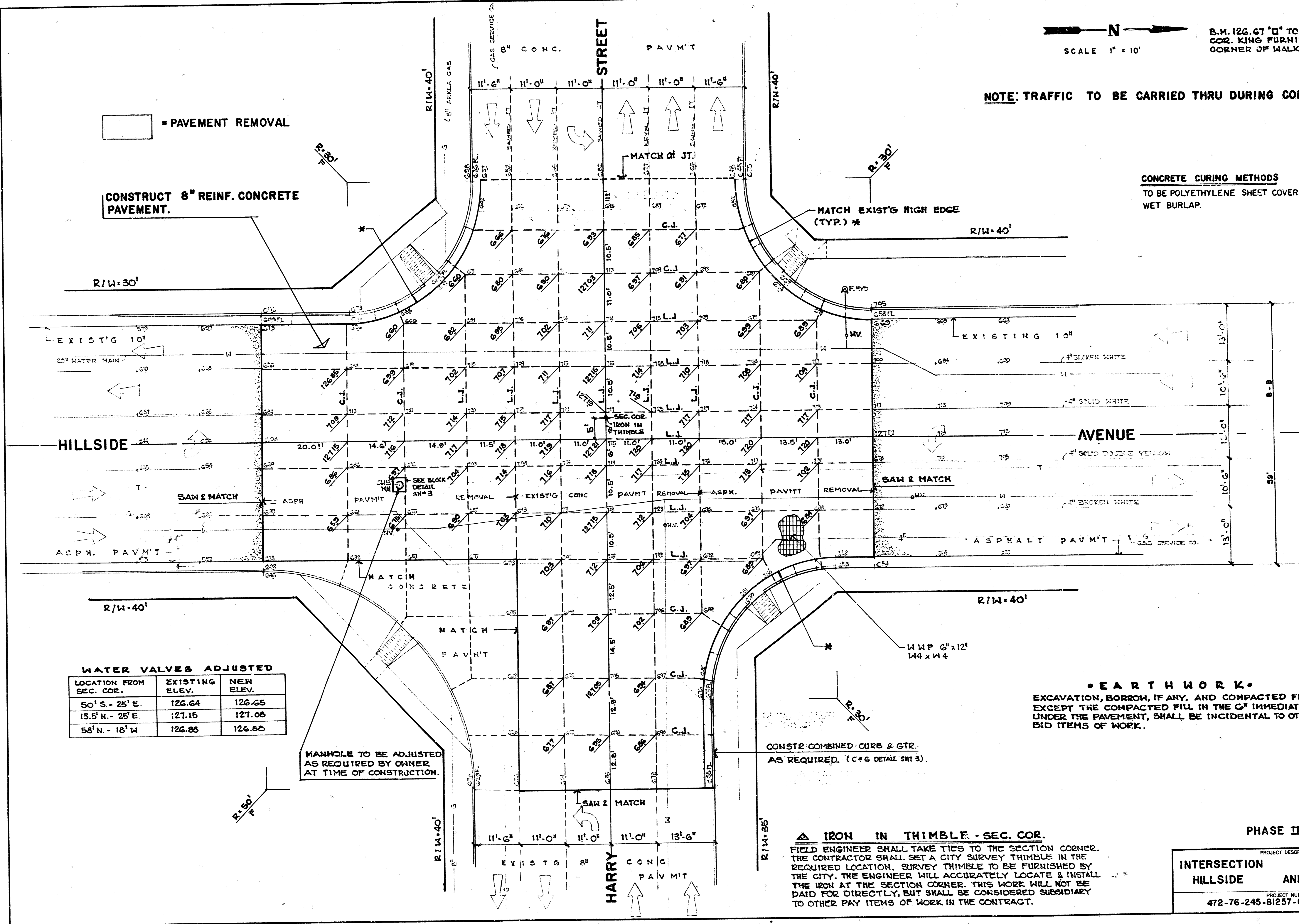


S.M. 126.67 "D" TOP OF WALK @ N.E. COR. KING FURNITURE STORE. N.E. CORNER OF WALK.

NOTE: TRAFFIC TO BE CARRIED THRU DURING CONSTRUCTION

= PAVEMENT REMOVAL
CONSTRUCT 8" REINF. CONCRETE PAVEMENT.

CONCRETE CURING METHODS
 TO BE POLYETHYLENE SHEET COVERING OR WET BURLAP.



WATER VALVES ADJUSTED

LOCATION FROM SEC. COR.	EXISTING ELEV.	NEW ELEV.
50' S. - 25' E.	126.64	126.65
13.5' N. - 25' E.	127.15	127.05
58' N. - 18' W.	126.85	126.85

MANHOLE TO BE ADJUSTED AS REQUIRED BY OWNER AT TIME OF CONSTRUCTION.

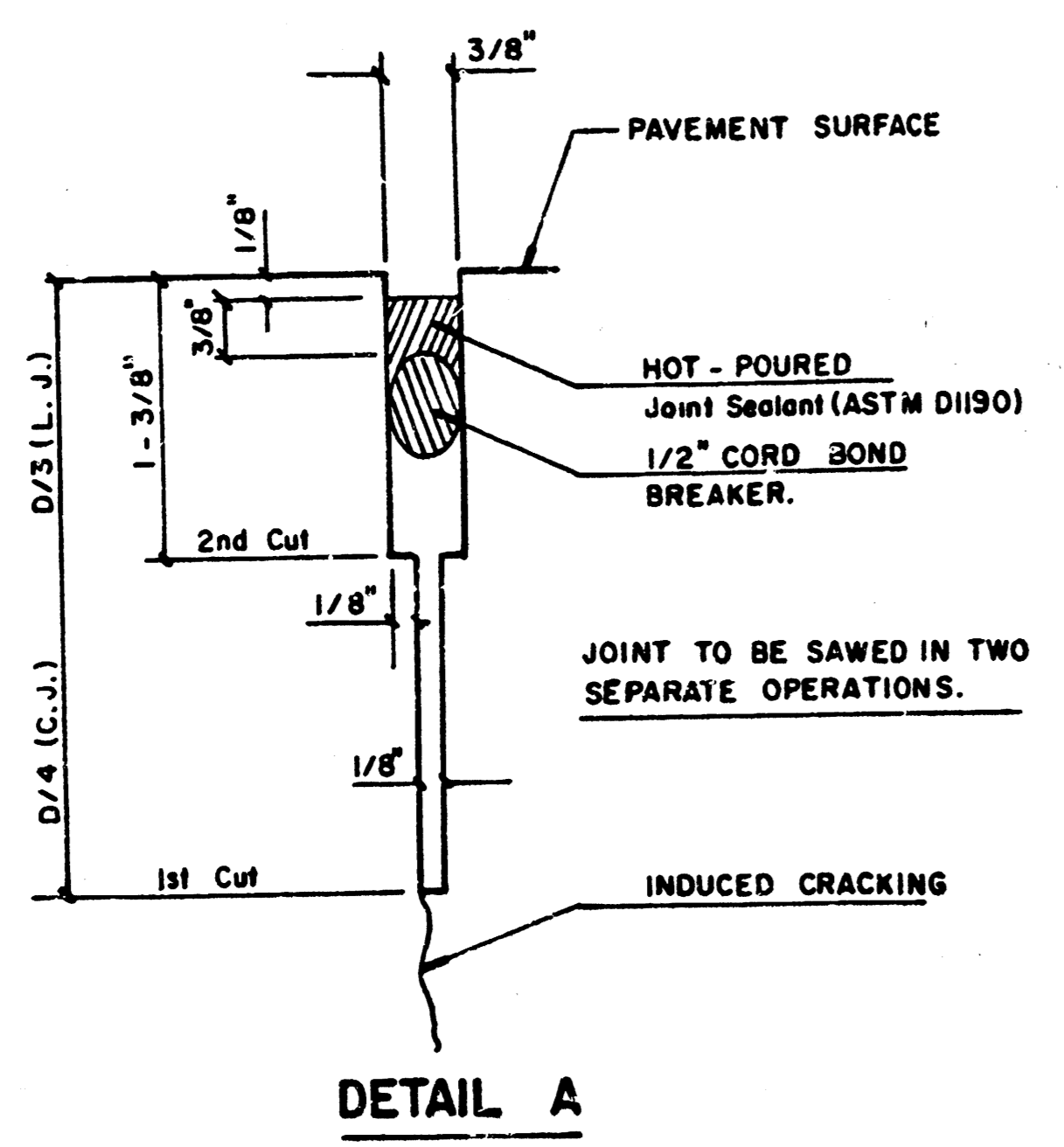
EARTHWORK
 EXCAVATION, BORROW, IF ANY, AND COMPACTED FILL, EXCEPT THE COMPACTED FILL IN THE C² IMMEDIATELY UNDER THE PAVEMENT, SHALL BE INCIDENTAL TO OTHER BID ITEMS OF WORK.

IRON IN THIMBLE - SEC. COR.
 FIELD ENGINEER SHALL TAKE TIES TO THE SECTION CORNER. THE CONTRACTOR SHALL SET A CITY SURVEY THIMBLE IN THE REQUIRED LOCATION. SURVEY THIMBLE TO BE FURNISHED BY THE CITY. THE ENGINEER WILL ACCURATELY LOCATE & INSTALL THE IRON AT THE SECTION CORNER. THIS WORK WILL NOT BE PAID FOR DIRECTLY, BUT SHALL BE CONSIDERED SUBSIDIARY TO OTHER PAY ITEMS OF WORK IN THE CONTRACT.

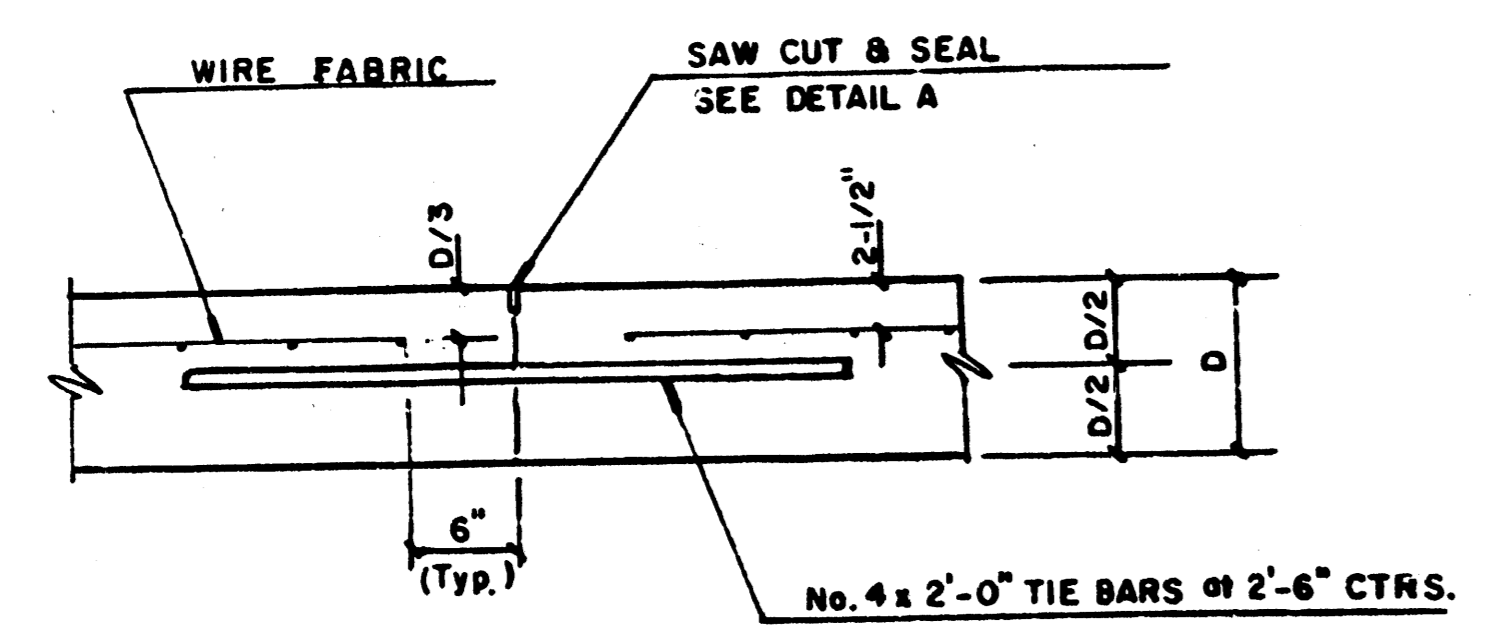
PHASE II

PROJECT DESCRIPTION	
INTERSECTION HILLSIDE AND HARRY	RECONSTRUCTION AND
PROJECT NUMBER 472-76-245-81257-000-000-001	

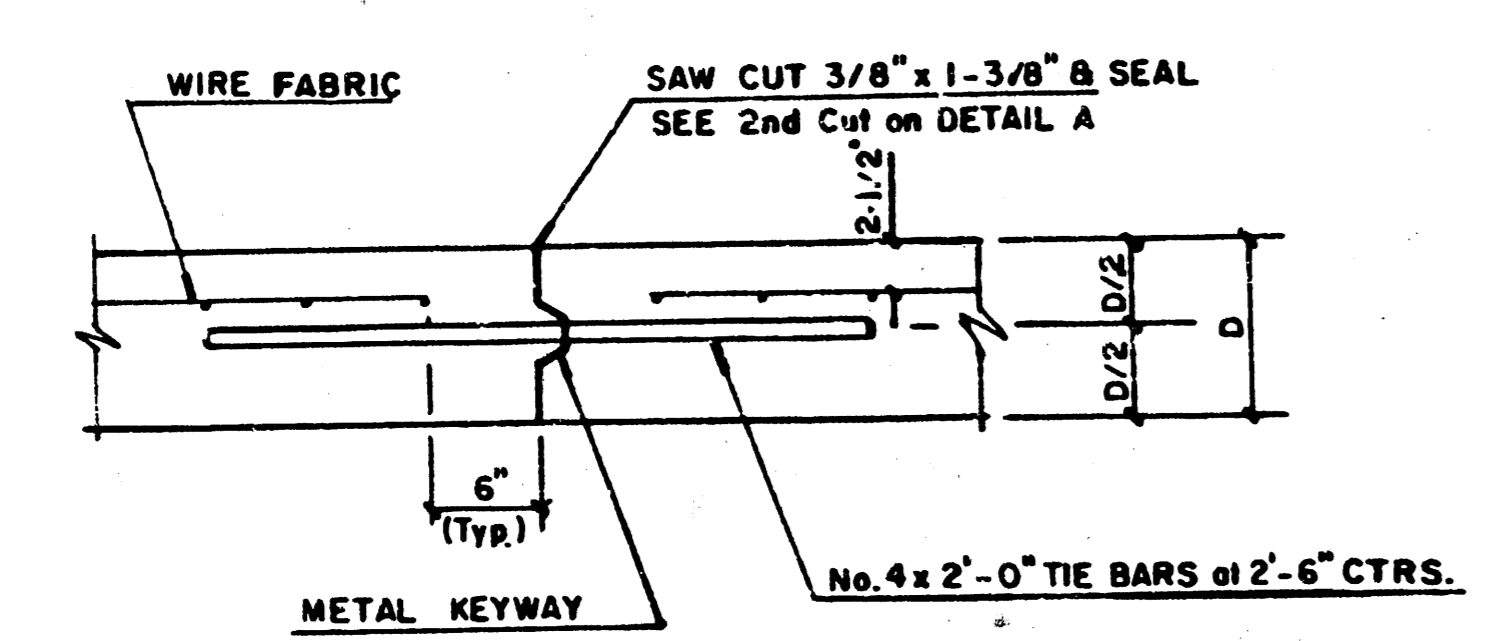
FILMED FROM THE BEST AVAILABLE COPY



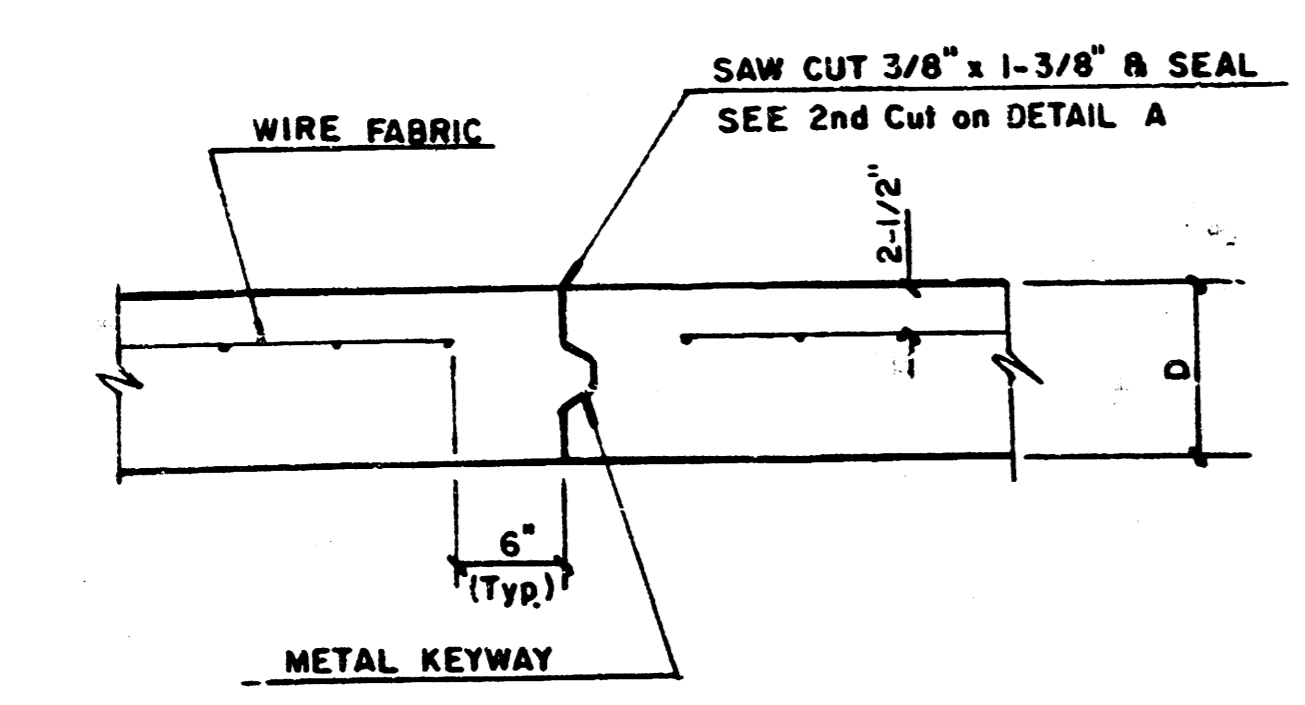
DETAIL A



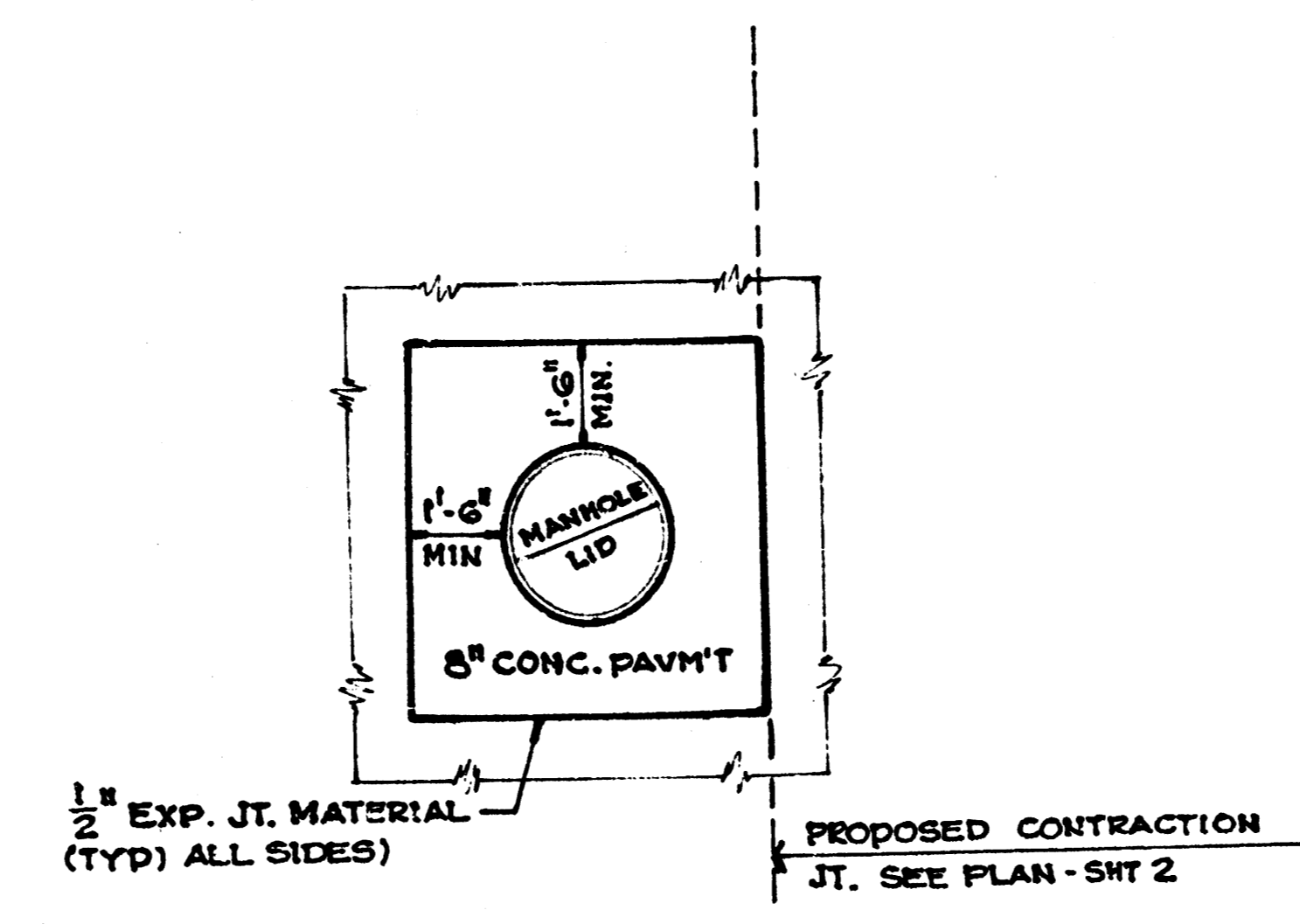
LONGITUDINAL JOINT DETAIL (L.J.)



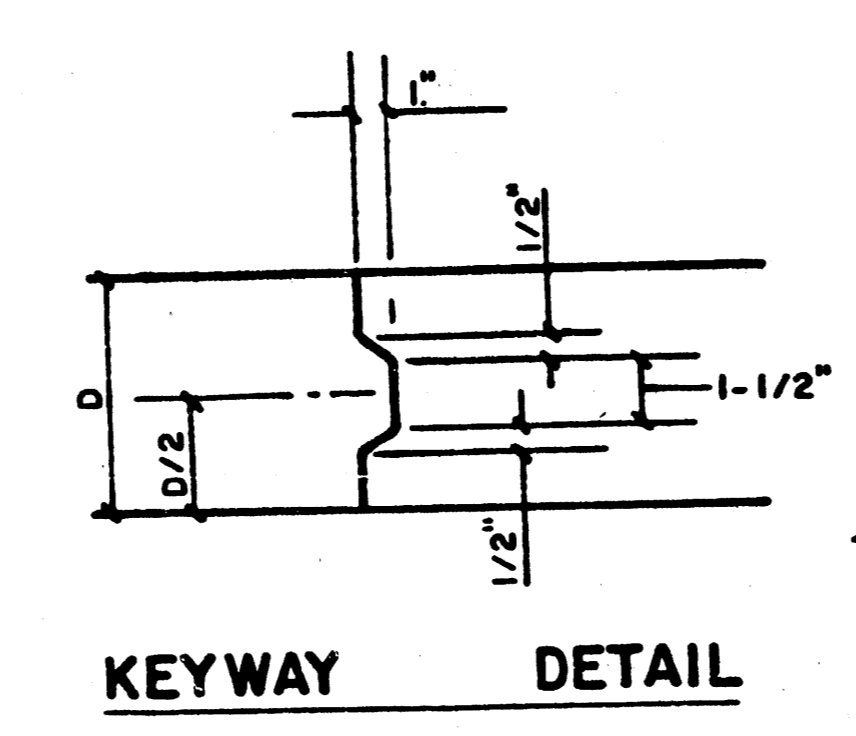
OPTIONAL LONGITUDINAL CONSTRUCTION JOINT (L.J.)
(Alternate L.J.)



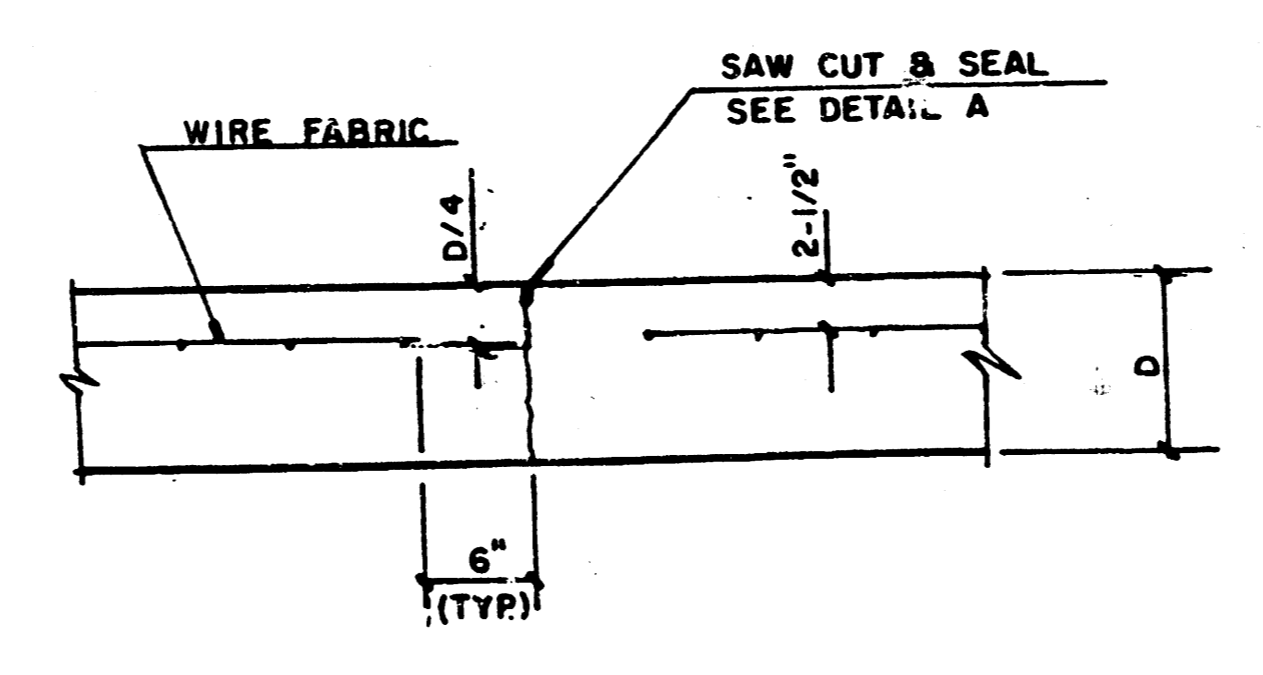
OPTIONAL CONTRACTION CONSTRUCTION JOINT (C.J.)
(Alternate C.J.)



TYPICAL MANHOLE BLOCKOUT
(CONCRETE PAVEMENT)

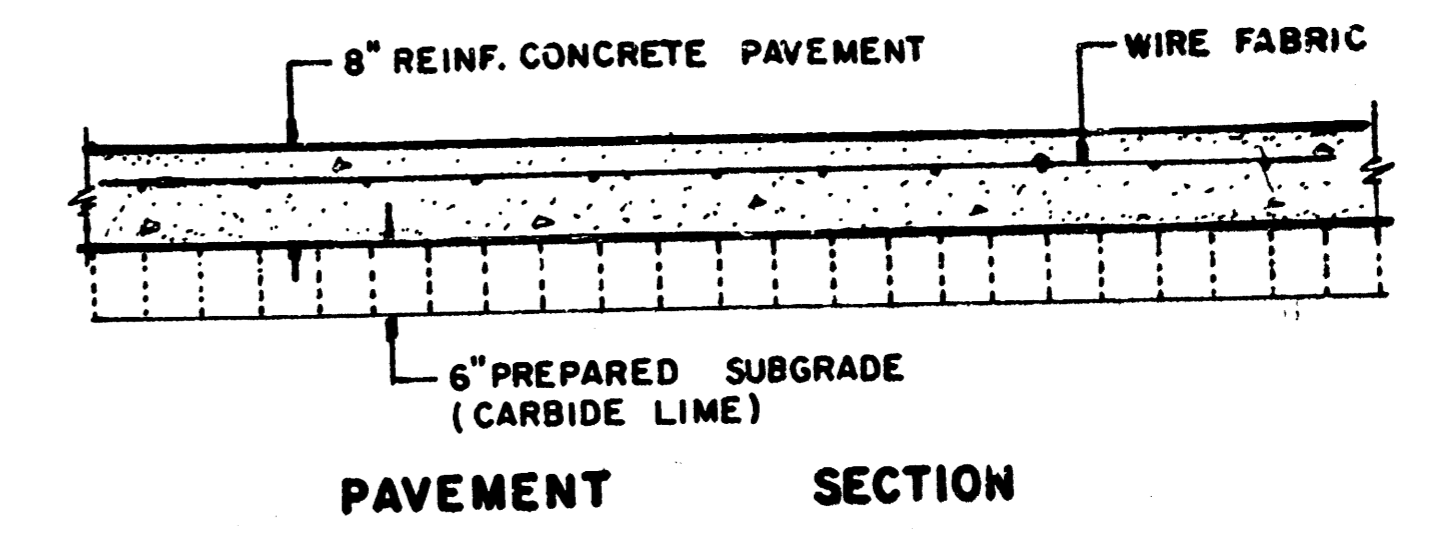


KEYWAY DETAIL

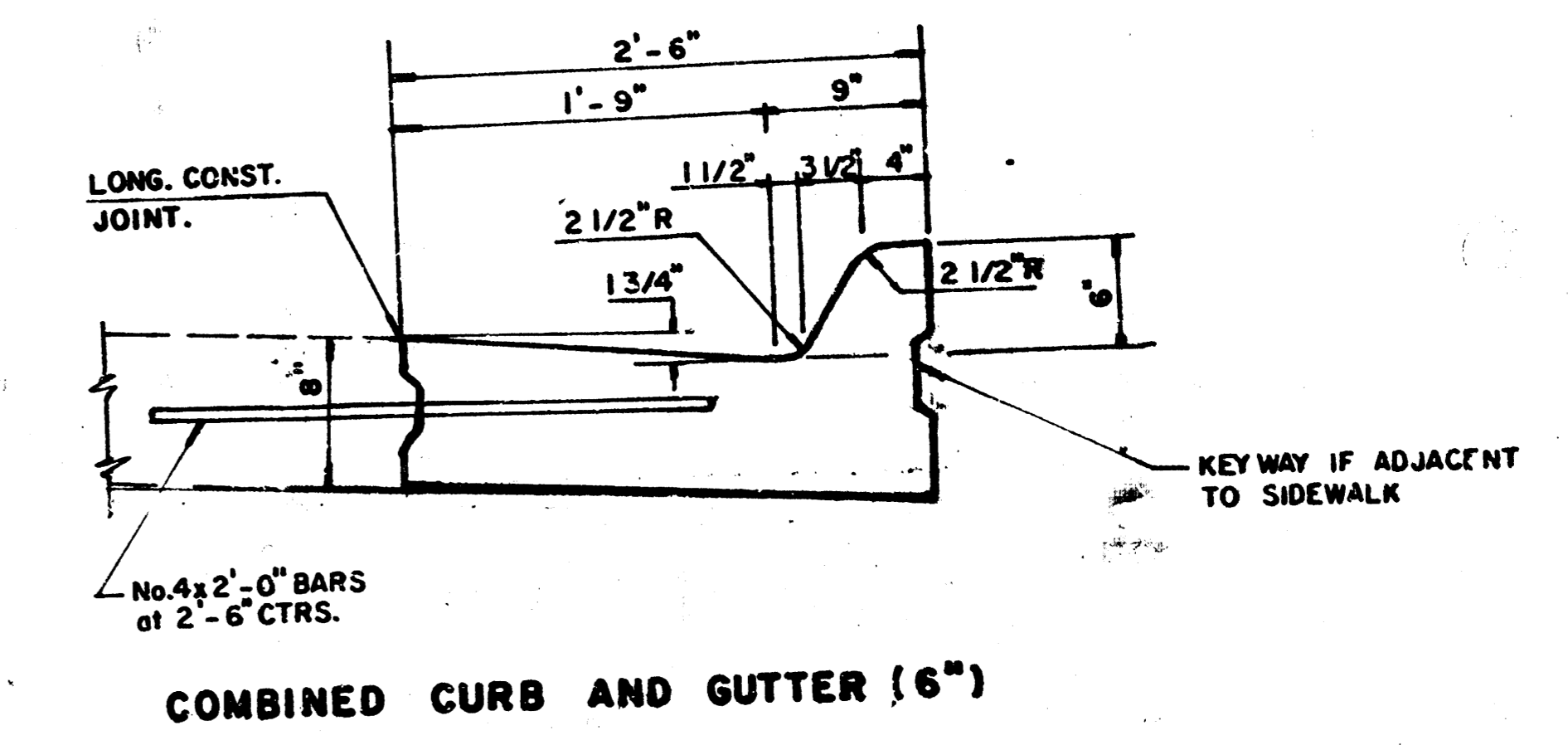


CONTRACTION JOINT DETAIL (C.J.)

LEGEND
 C.J. IDENTIFIES CONTRACTION JOINT
 L.J. IDENTIFIES LONGITUDINAL JOINT
 D = 8"



PAVEMENT SECTION

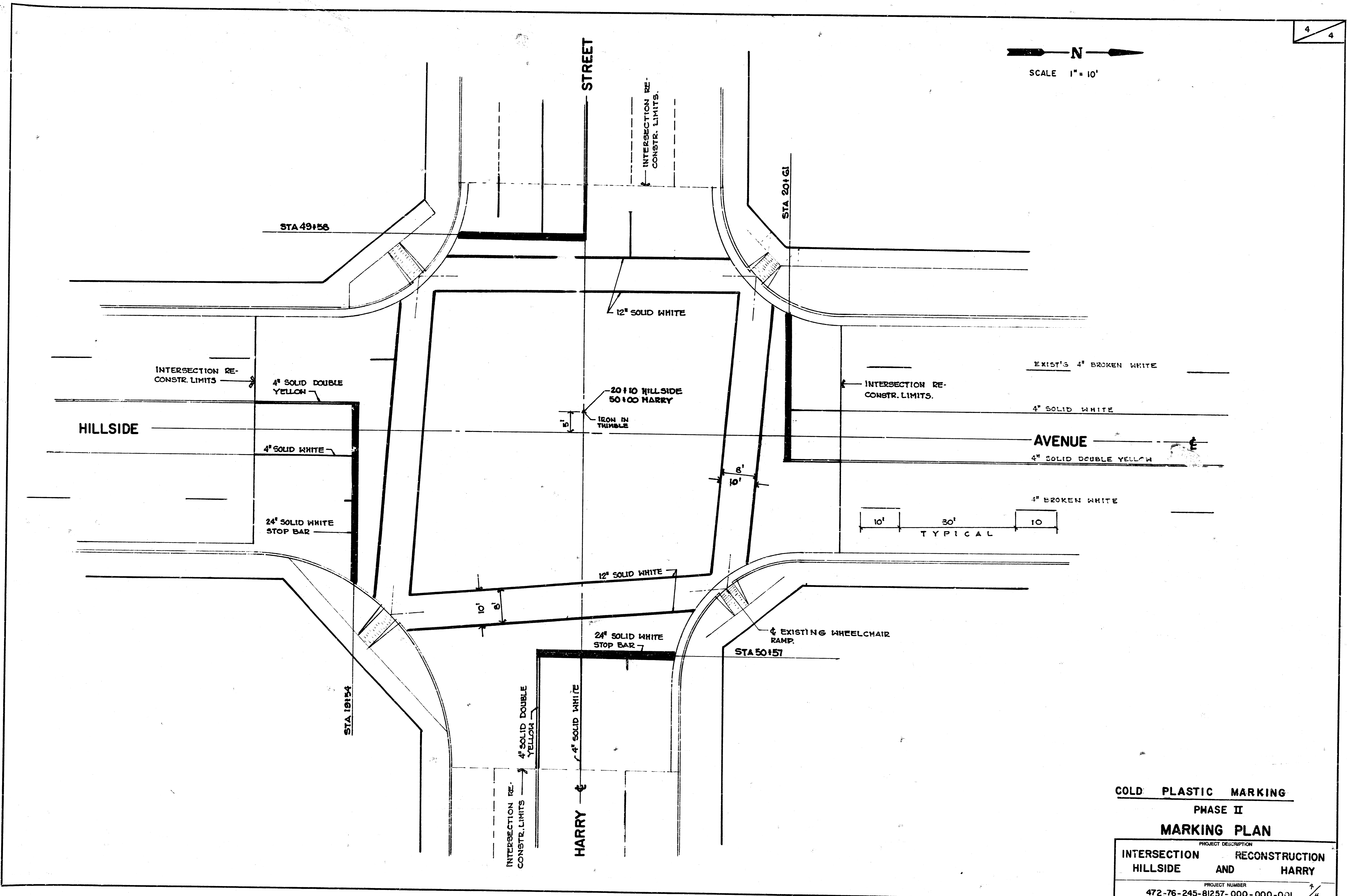


COMBINED CURB AND GUTTER (6")

PAVEMENT JOINTS & DETAILS
 PROJECT DESCRIPTION
 INTERSECTION RECONSTRUCTION
 HILLSIDE AND HARRY
 PROJECT NUMBER
 472-76-245-81257-000-000-001



SCALE 1" = 10'



COLD PLASTIC MARKING

PHASE II

MARKING PLAN

PROJECT DESCRIPTION	
INTERSECTION HILLSIDE	RECONSTRUCTION AND HARRY
PROJECT NUMBER	
472-76-245-81257-000-000-001 7/4	

10 0 3 13