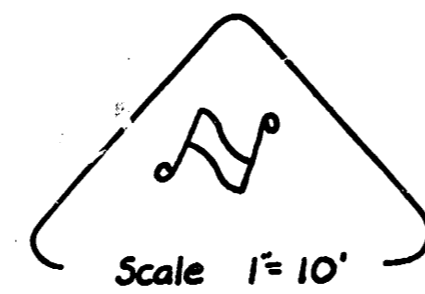
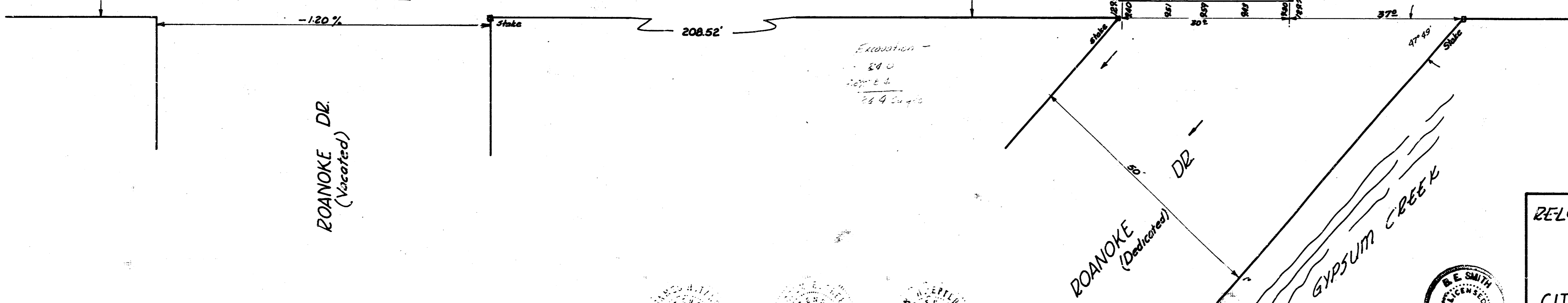
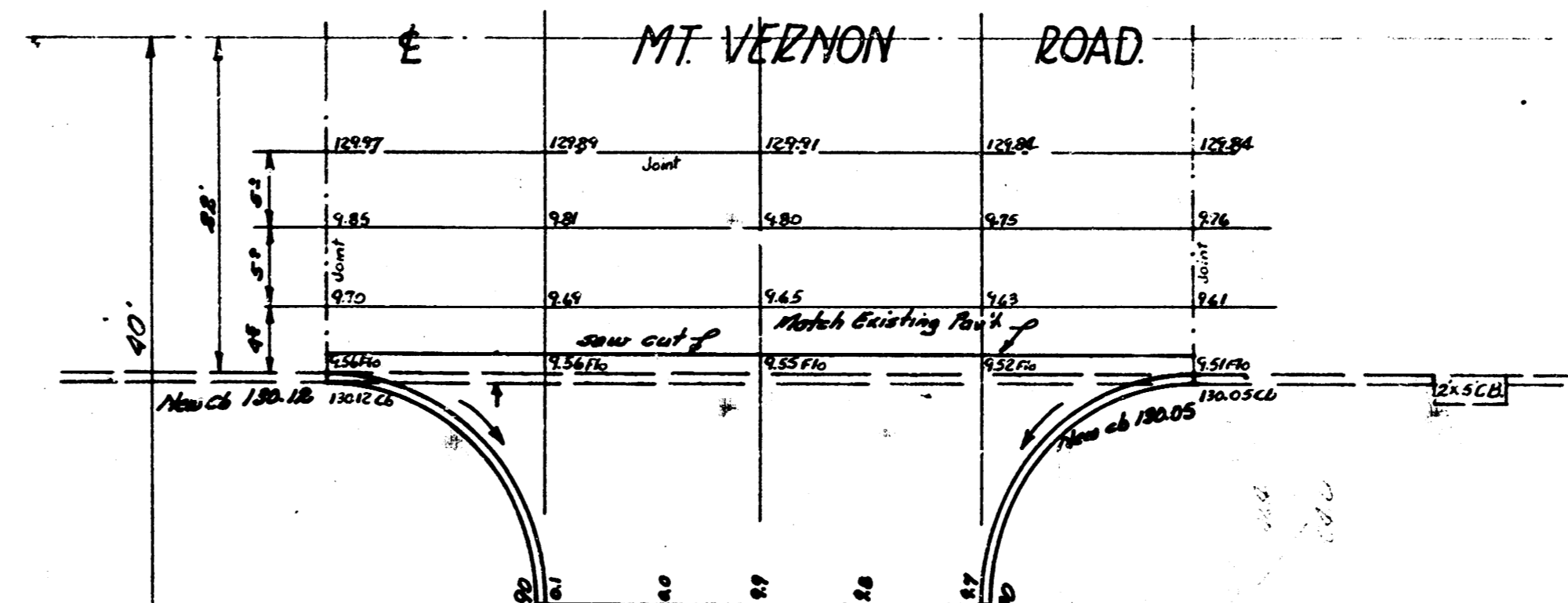
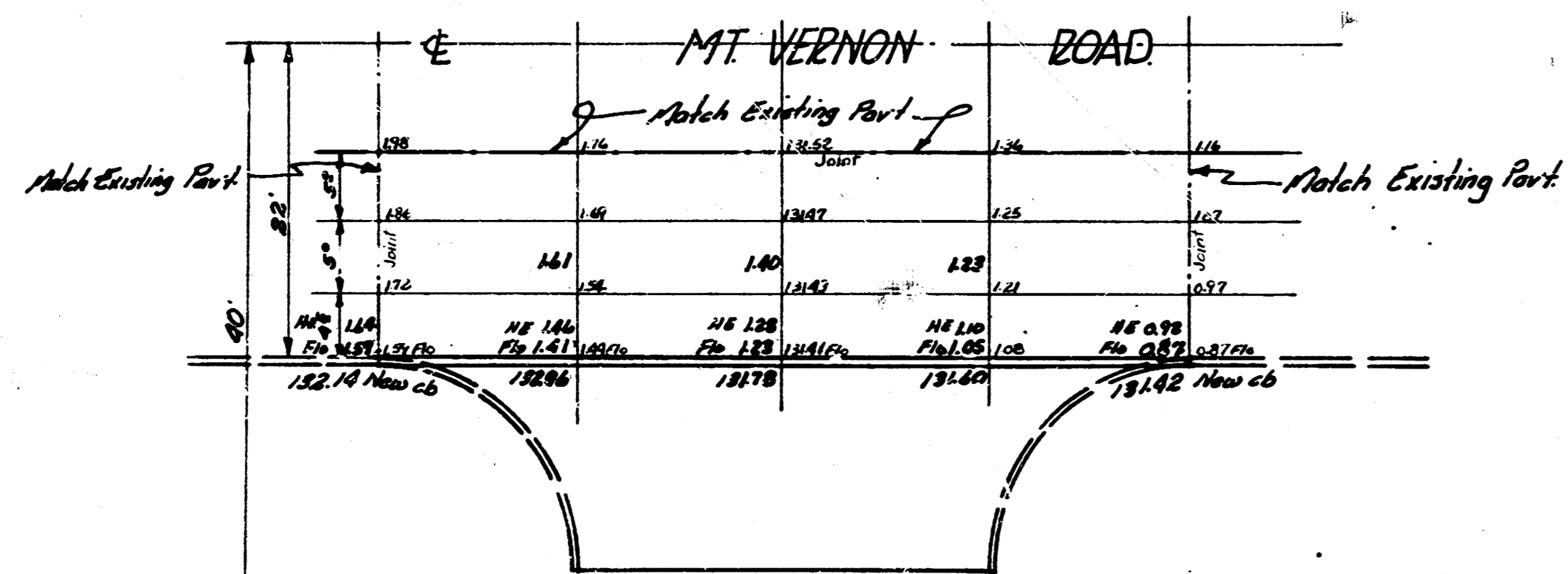
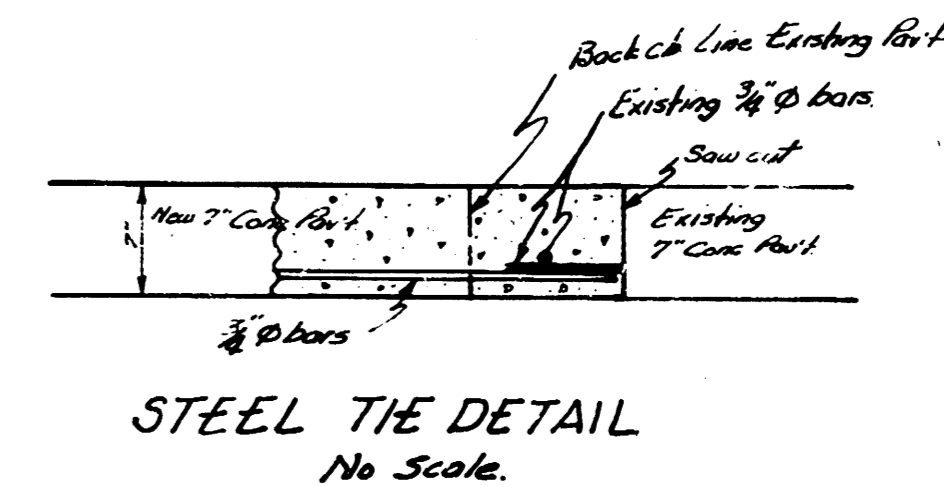


BM: 130.53 "X" on SW cor. SW wing of Bridge, MT. Vernon & Gypsum Creek.
 BM: 137.54 Standard NW cor Edgemoor & MT. Vernon.



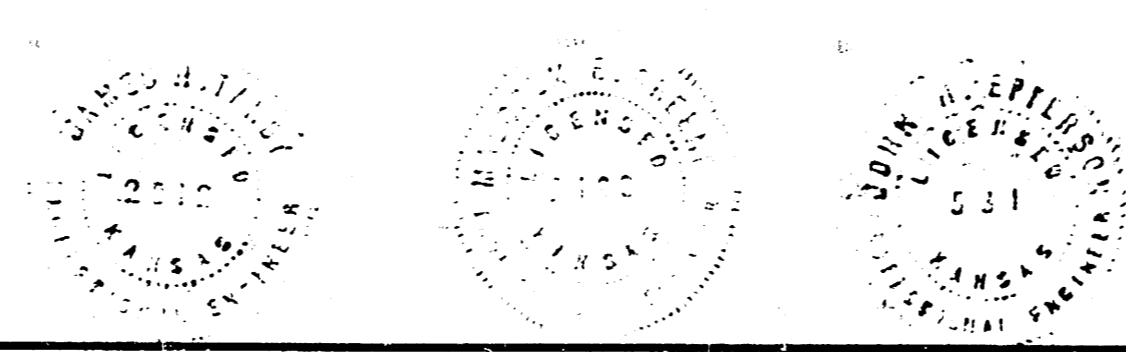
NOTICE TO CONTRACTOR:
 Remove pavement of wings (cross-hatched area) and replace with T-Conc. & Integral Curb as shown.

NOTICE TO CONTRACTOR & FIELD ENGINEER:
 Saw off existing curb and construct Intersection as shown with T-Conc. Pavement. Tie wing steel to exposed steel in existing concrete pavement. Grade Intersection so water will drain to creek.



NOTE TO CONTRACTOR
 This project will be constructed under the supervision of the CITY ENGINEER and conforming to the SPECIFICATIONS of the CITY OF WICHITA. The CONTRACTOR will reimburse the City of Wichita for all cost of Engineering, Plans, and Inspection.

RELOCATION OF INTERSECTION
 ROANOKE & MT. VERNON
 T-Conc & Cb
 CITY OF WICHITA, KANSAS.
 B.E. SMITH CITY ENGINEER
 PRIVATE JOB.



CHAS. H. SMITH
 CIVIL ENGINEER
 1001 W. 10th St.
 WICHITA, KANSAS 67202