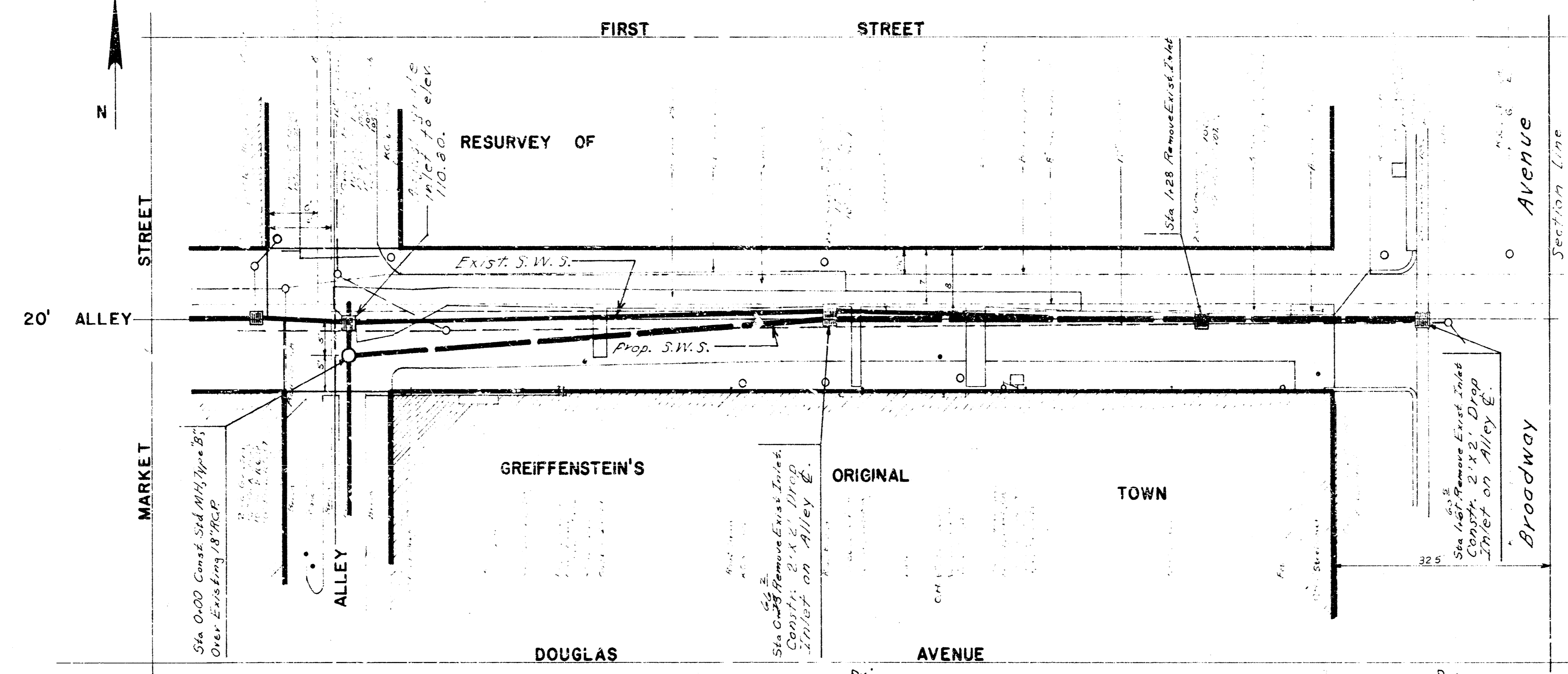


NOTE: EXCESS EXCAVATION FROM SEWER TRENCHES IS TO REMAIN ON PROJECT SITE. EXCESS EXCAVATION SHALL BE UNIFORMLY WINDROWED OVER SEWER TRENCHES.

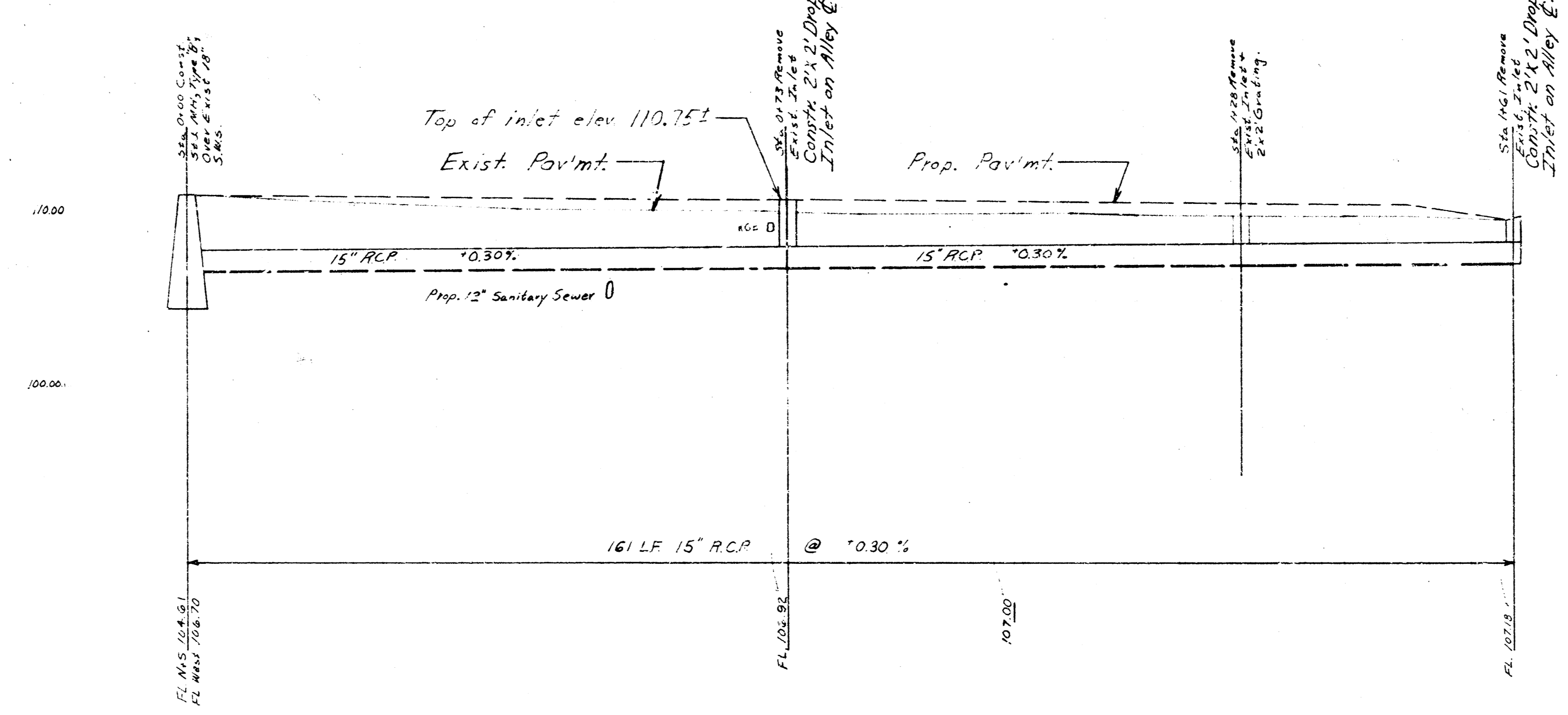
BM #1 112.93 "a" Cut Top Cone Retaining Wall On SW Cor. Broadway & First.
 BM #2 112.04 "b" Cut Top Curb SL Alley 15 BLK. N. OF Douglas, 135" E. Of EL. Marked.



- Underground Utilities
- Arbia Gas
 - Gas Service
 - Bell Telephone
 - A.G. & E.
 - Storm Water Sewer
 - Sanitary Sewer

NOTE: ALL ACTIVE RAIN DRAIN CONNECTIONS TO THE EXISTING STORM SEWER SHALL BE CONNECTED TO THE NEW STORM SEWER BY THE CONTRACTOR. THIS WORK WILL BE PAID FOR AT THE UNIT PRICE BID FOR RAIN DRAIN CONNECTIONS; WHICH PRICE SHALL INCLUDE THE COST OF ALL MATERIALS, LABOR, PERMITS, AND ANY OTHER NECESSARY INCIDENTALS TO COMPLETE THE WORK IN ACCORDANCE WITH THE CITY OF WICHITA CODE.

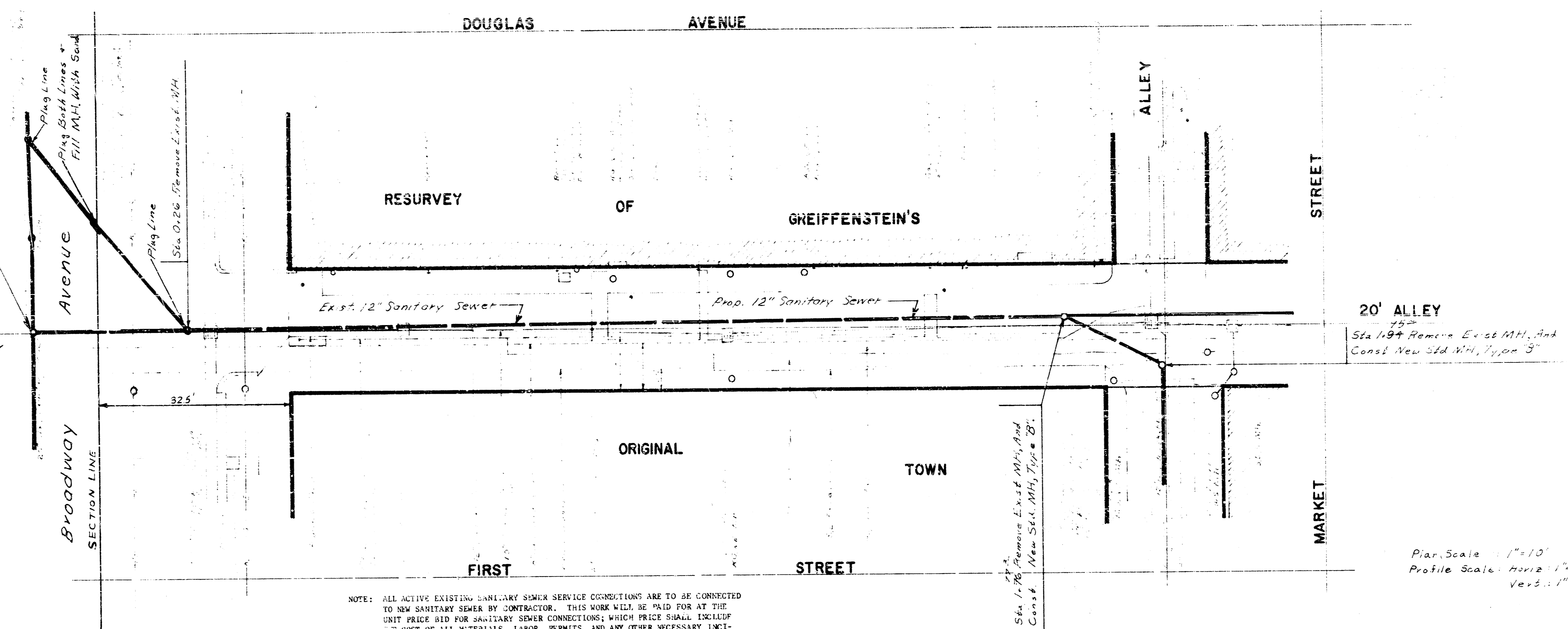
Plan Scale: 1"=10'
 Profile Scale: Horizontal: 1"=10'
 Vertical: 1"=5'



REBUILDING AND RECONSTRUCTION OF PORTION OF WEST SUBMAIN B, S.S. NO. 1, AND PORTION OF DISTRICT K, STORM WATER SEWER NO. 8, IN THE ALLEY NORTH OF DOUGLAS FROM WEST LINE OF ALLEY WEST OF BROADWAY W.L. BROADWAY. CITY OF WICHITA, KANSAS
 R.W. LINN CITY ENGINEER
 DATE: Sep. 1973 SHEET: 1 OF 2
 PROJECT NO. DBKL 572019

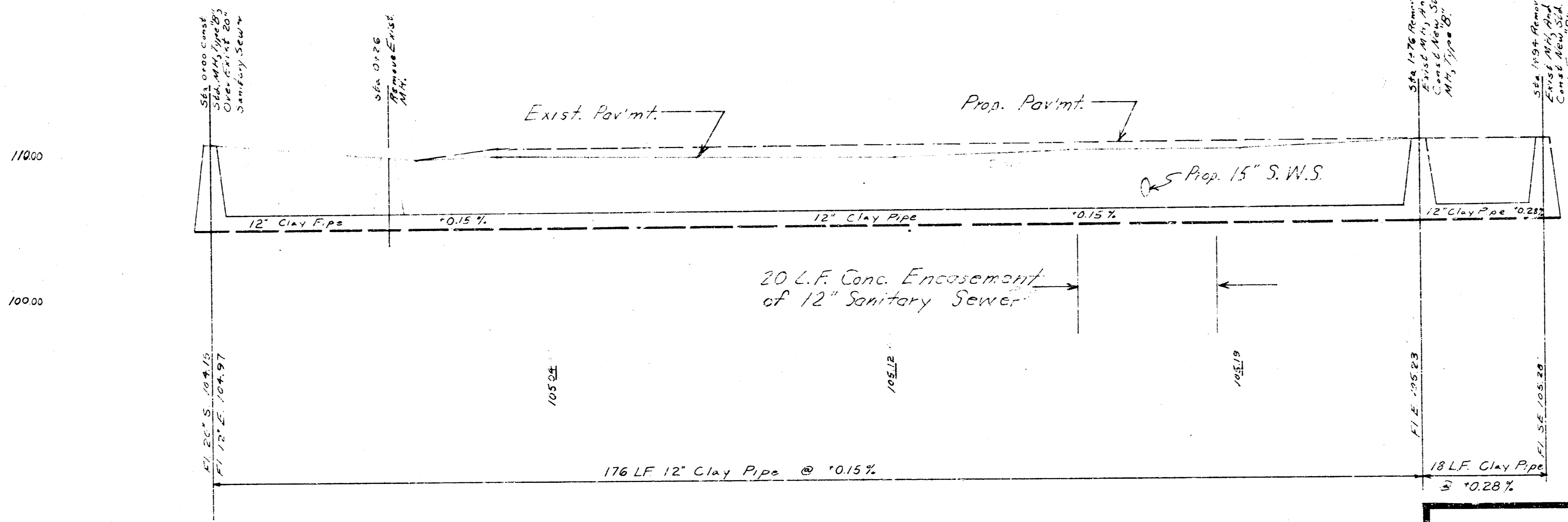
Sta. 0+00 Const. 3' dia. 5' dia. M.H. Type "B" on exist. 20" Sanitary Sewer.

- Underground Utilities
- Arkla Gas
 - Gas Service
 - Bell Telephone
 - Storm Water Sewer
 - Sanitary Sewer
 - M.G. & E.



NOTE: ALL ACTIVE EXISTING SANITARY SEWER SERVICE CONNECTIONS ARE TO BE CONNECTED TO NEW SANITARY SEWER BY CONTRACTOR. THIS WORK WILL BE PAID FOR AT THE UNIT PRICE BID FOR SANITARY SEWER CONNECTIONS WHICH PRICE SHALL INCLUDE THE COST OF ALL MATERIALS, LABOR, PERMITS, AND ANY OTHER NECESSARY INCIDENTALS TO COMPLETE THE WORK IN ACCORDANCE WITH THE CITY OF MICHIGAN CODE.

Plan Scale: 1"=10'
Profile Scale: Horiz. 1"=10'
Vert. 1"=5'



DATE: SHEET: 2 OF 2
PROJECT NO. DBKL 572019

0+00 0+50 1+00 1+50

14 e 1 2