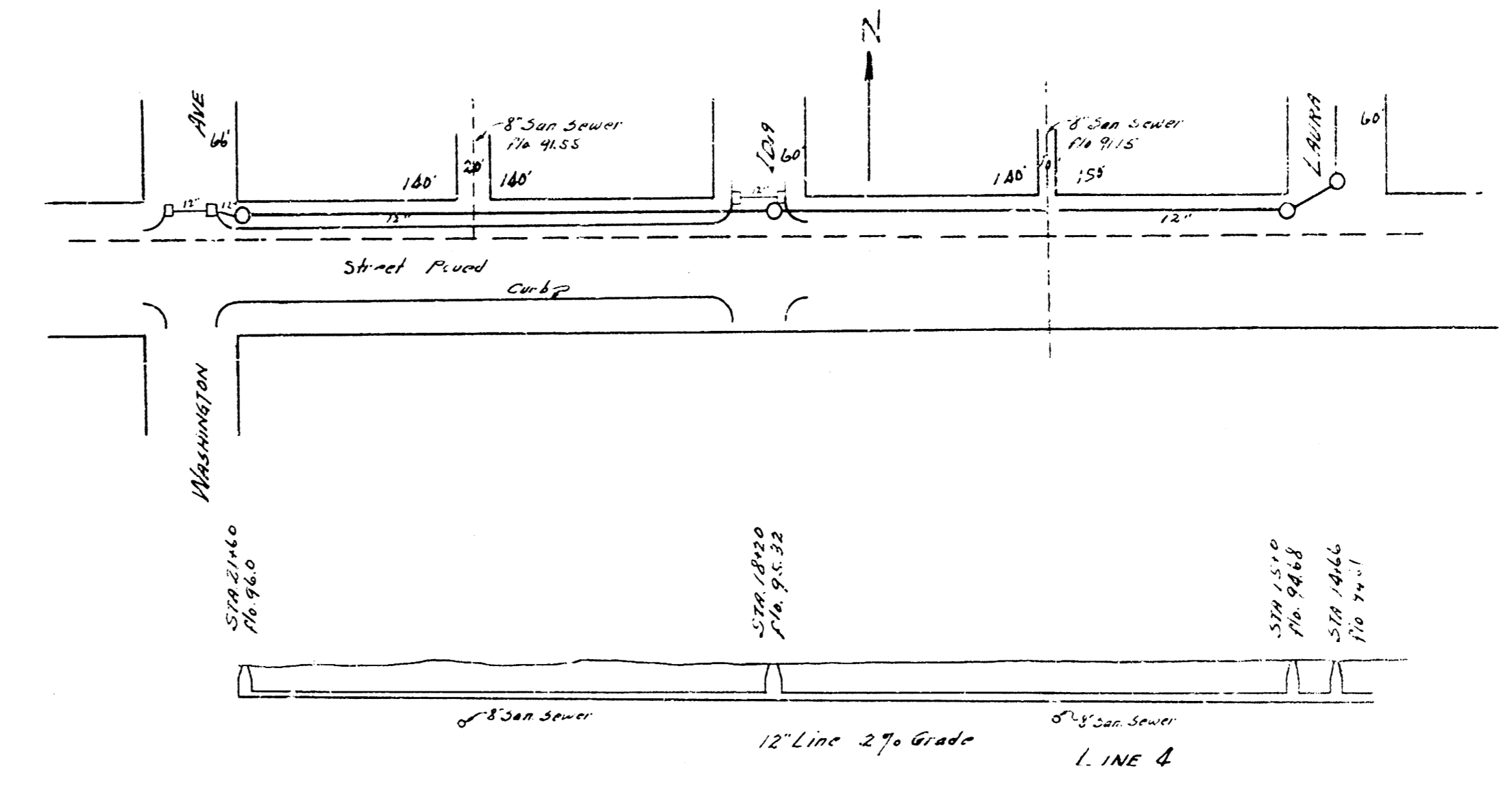
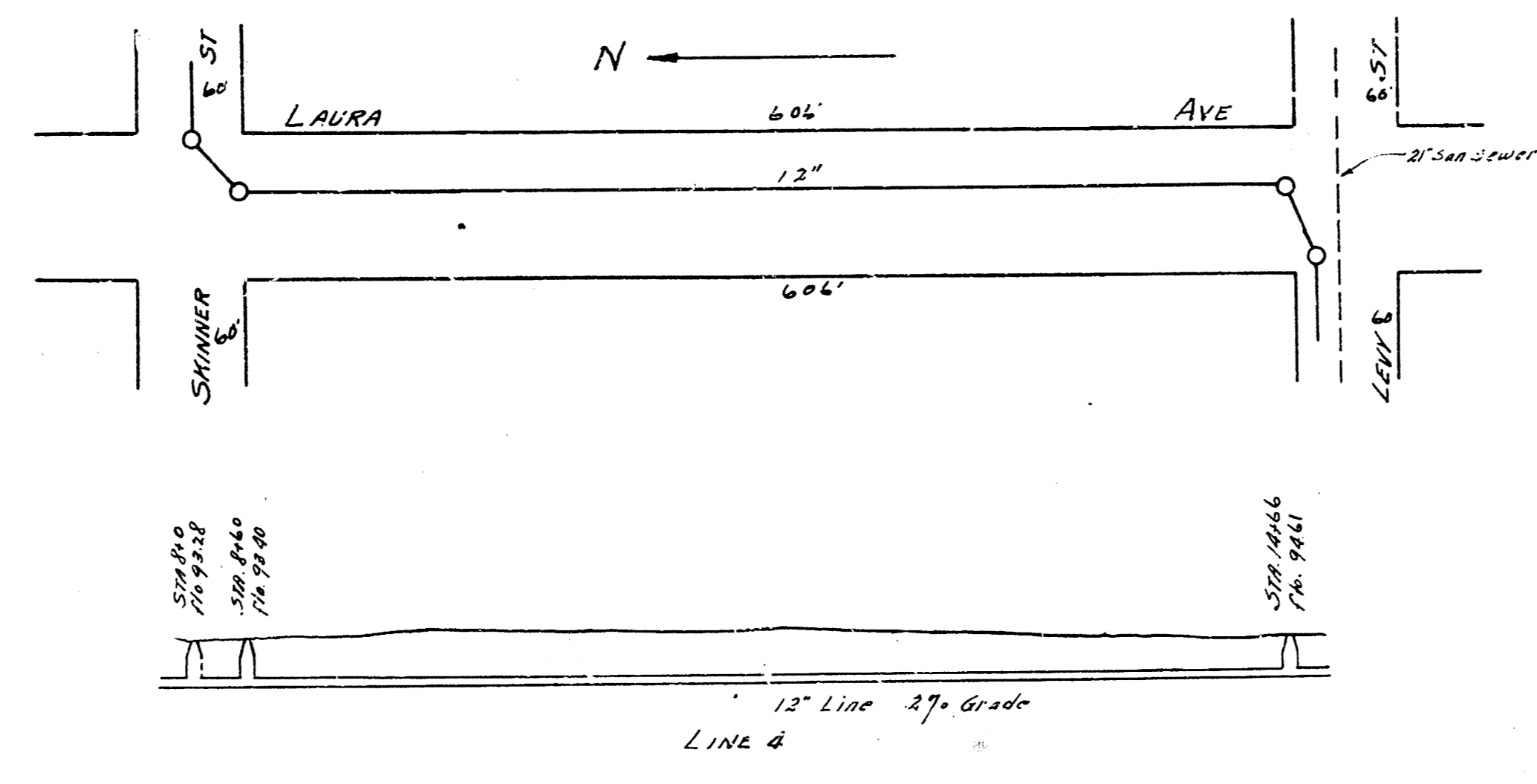
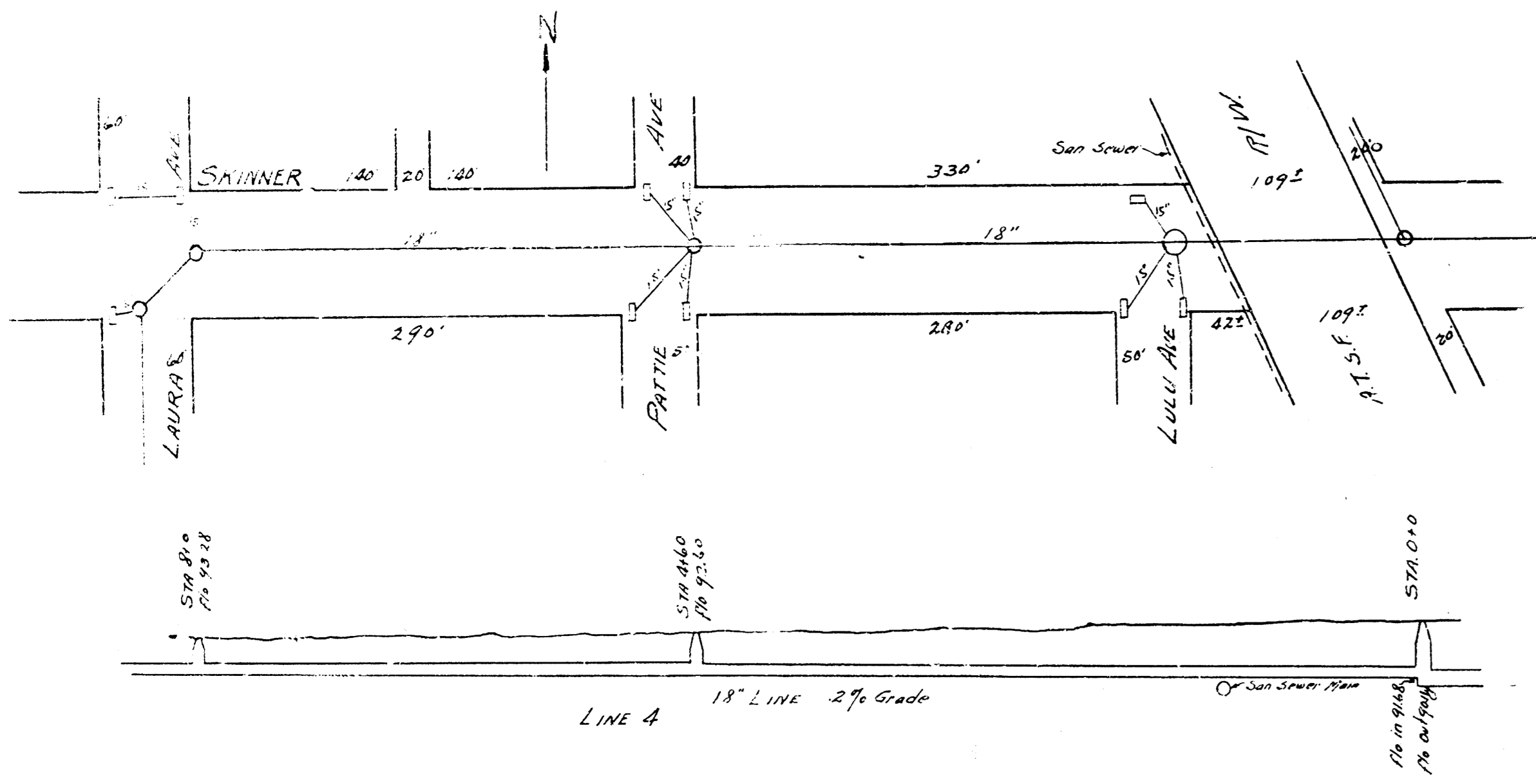


STORM WATER SIPHON  
 AT THE INTERSECTION OF  
 S.W.S. NO 26, DIST. 27 AND S.S. NO 20  
 HYDRAULIC AND LEVY (N.W. Mt. Vernon)  
 PL BROCKWAY - CITY ENGINEER DEC. - 1929  
 SCALE 1" = 2'



SHEET 112  
DIST 27 SWS 26  
HARRIS

