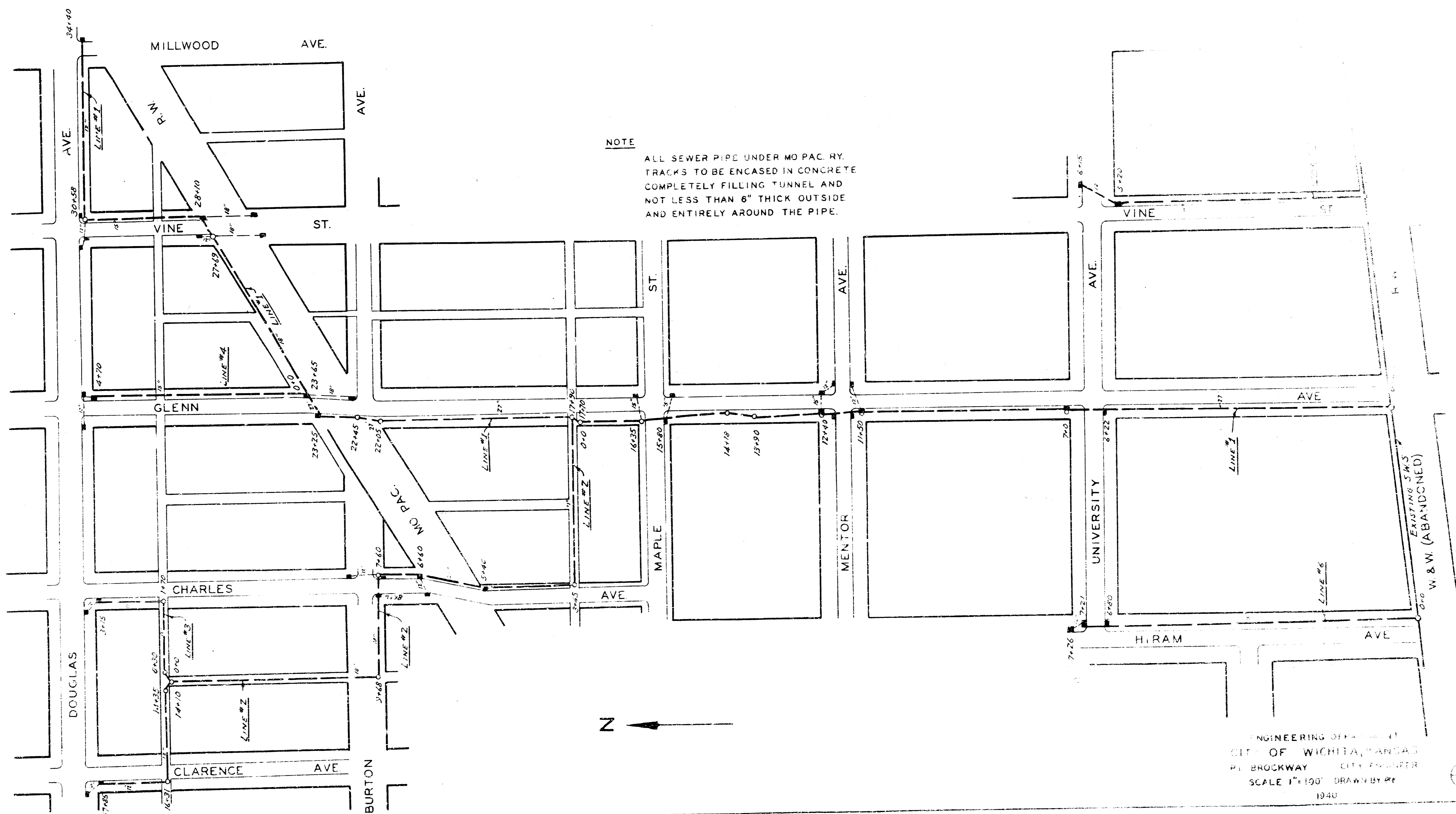


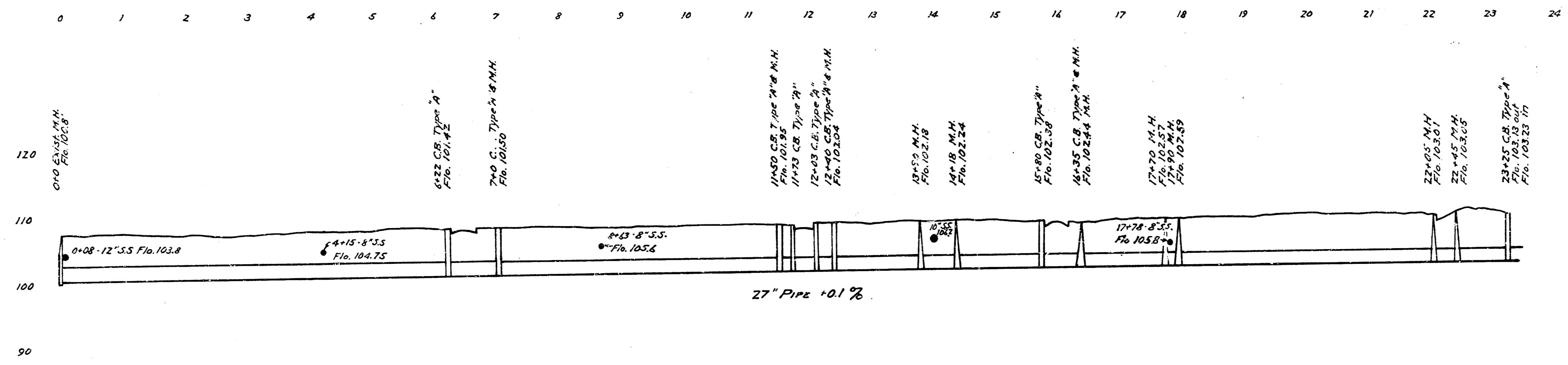
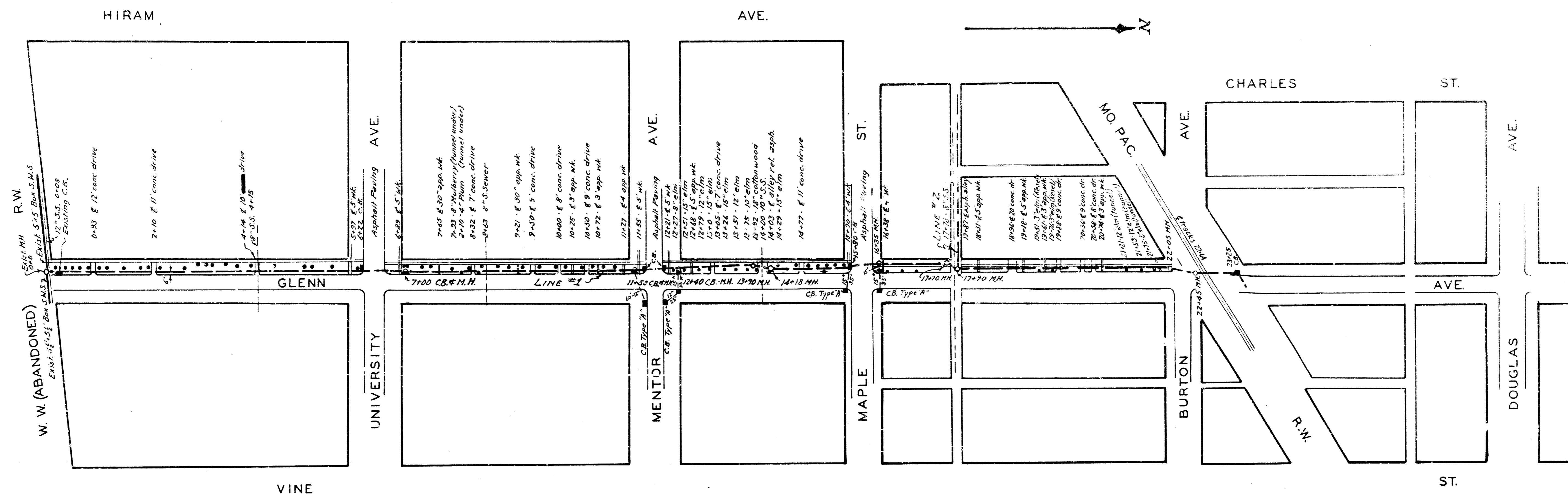
STORM WATER SEWER NO. 30

WICHITA, KANSAS



NOTE
ALL SEWER PIPE UNDER MO PAC RY
TRACKS TO BE ENCASED IN CONCRETE
COMPLETELY FILLING TUNNEL AND
NOT LESS THAN 6" THICK OUTSIDE
AND ENTIRELY AROUND THE PIPE.

ENGINEERING DEPARTMENT
CITY OF WICHITA, KANSAS
R. BROCKWAY CITY ENGINEER
SCALE 1"=100' DRAWN BY RY
1940

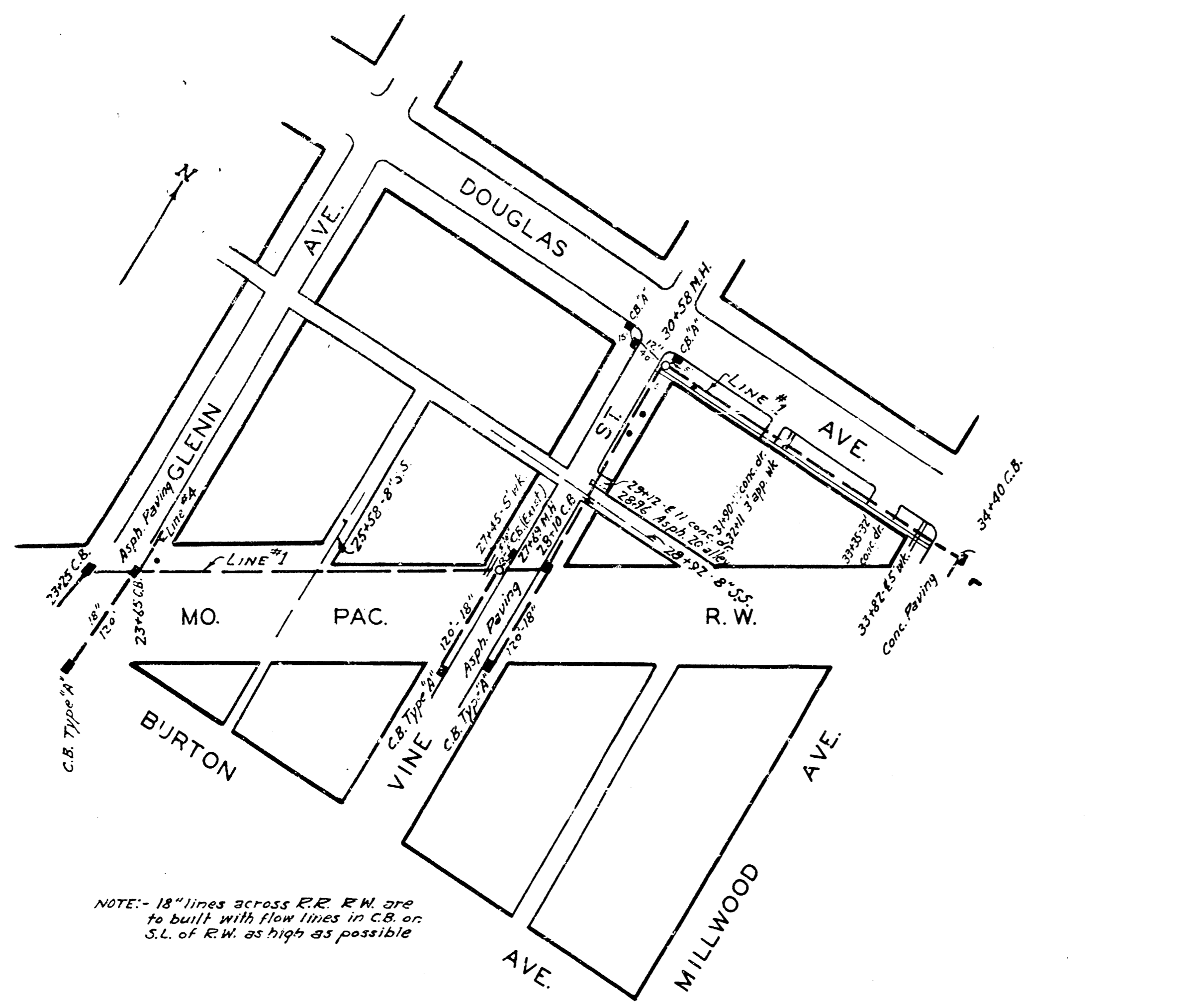


- LEGEND**
- Manhole
 - Existing Sewer
 - Tree
 - Catch Basin Inlet
 - Telephone Conduit
 - Sidewalk
 - Paved Driveway

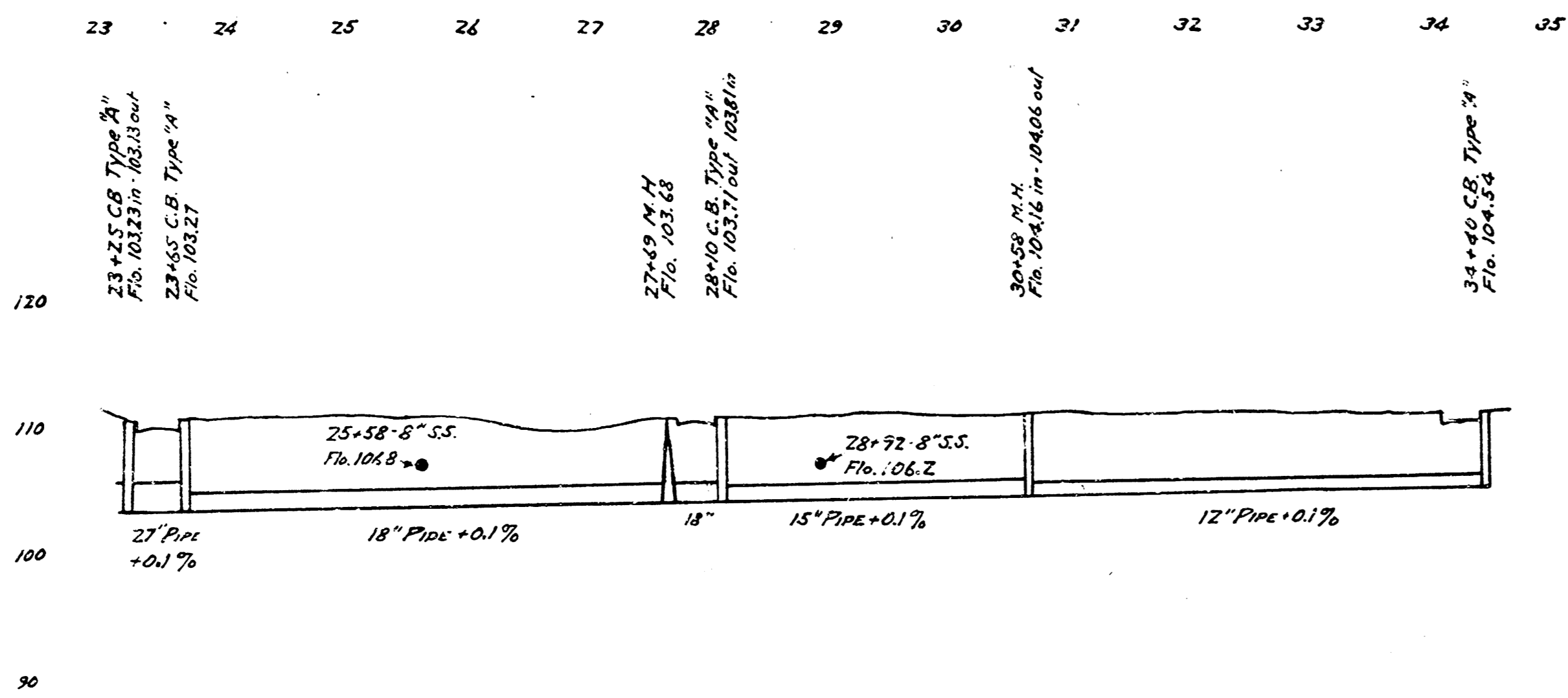
B.M. Elev. 106.93 Iron in thim. C. Glenn @ N.S. WeW E/W

LINE 1

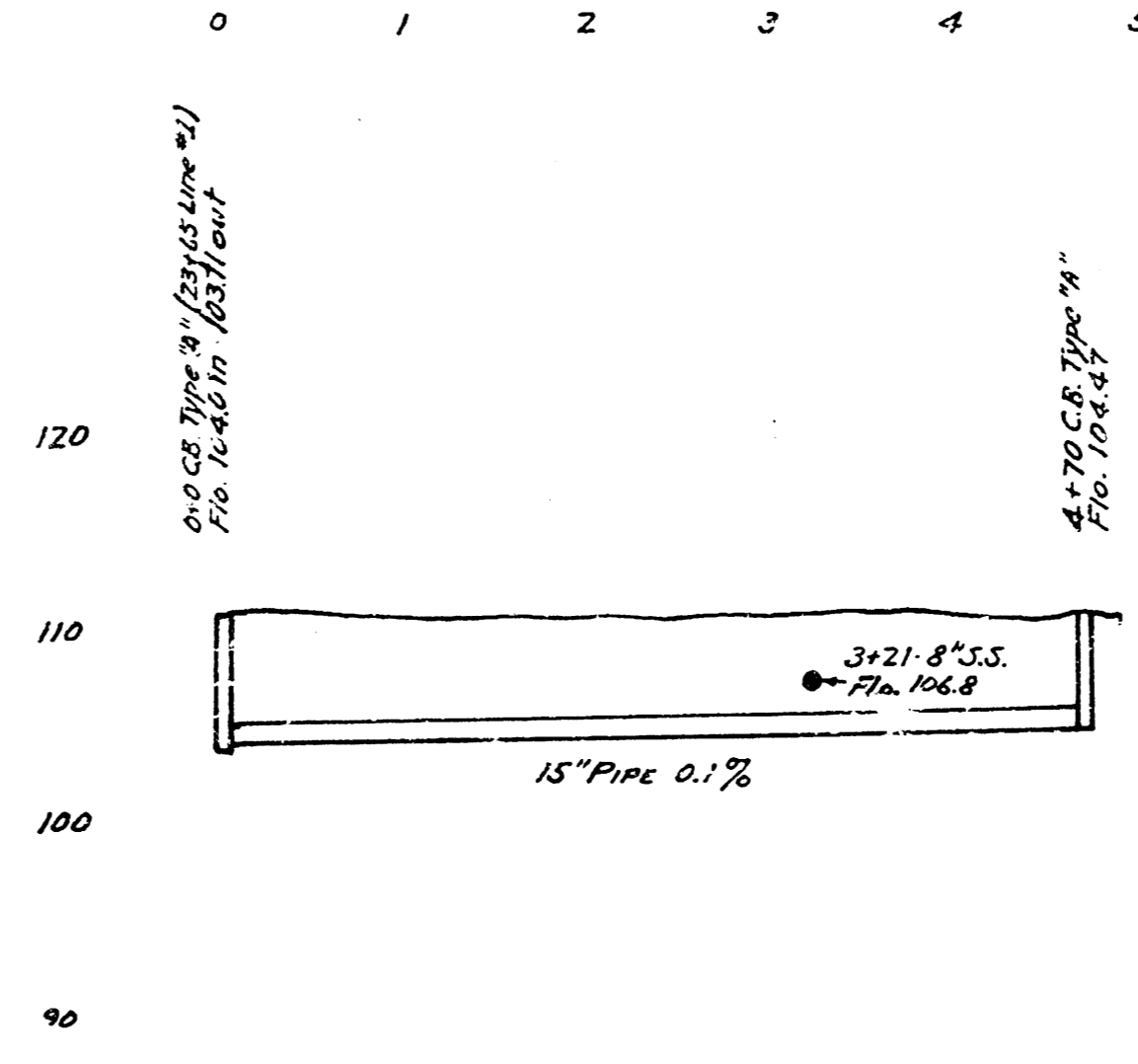
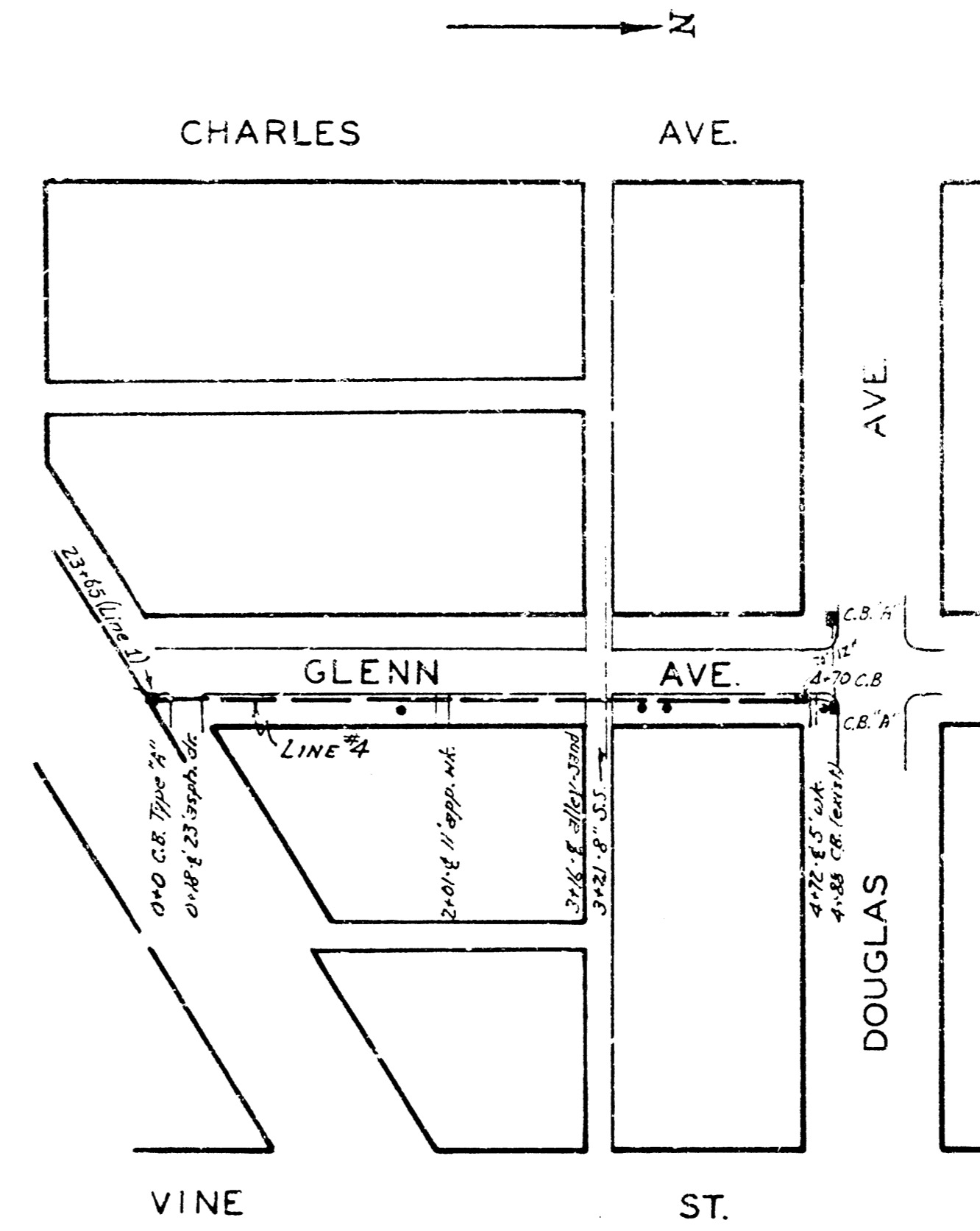
S.W.S.#30
ENGINEERING DEPARTMENT
CITY OF WICHITA, KANSAS



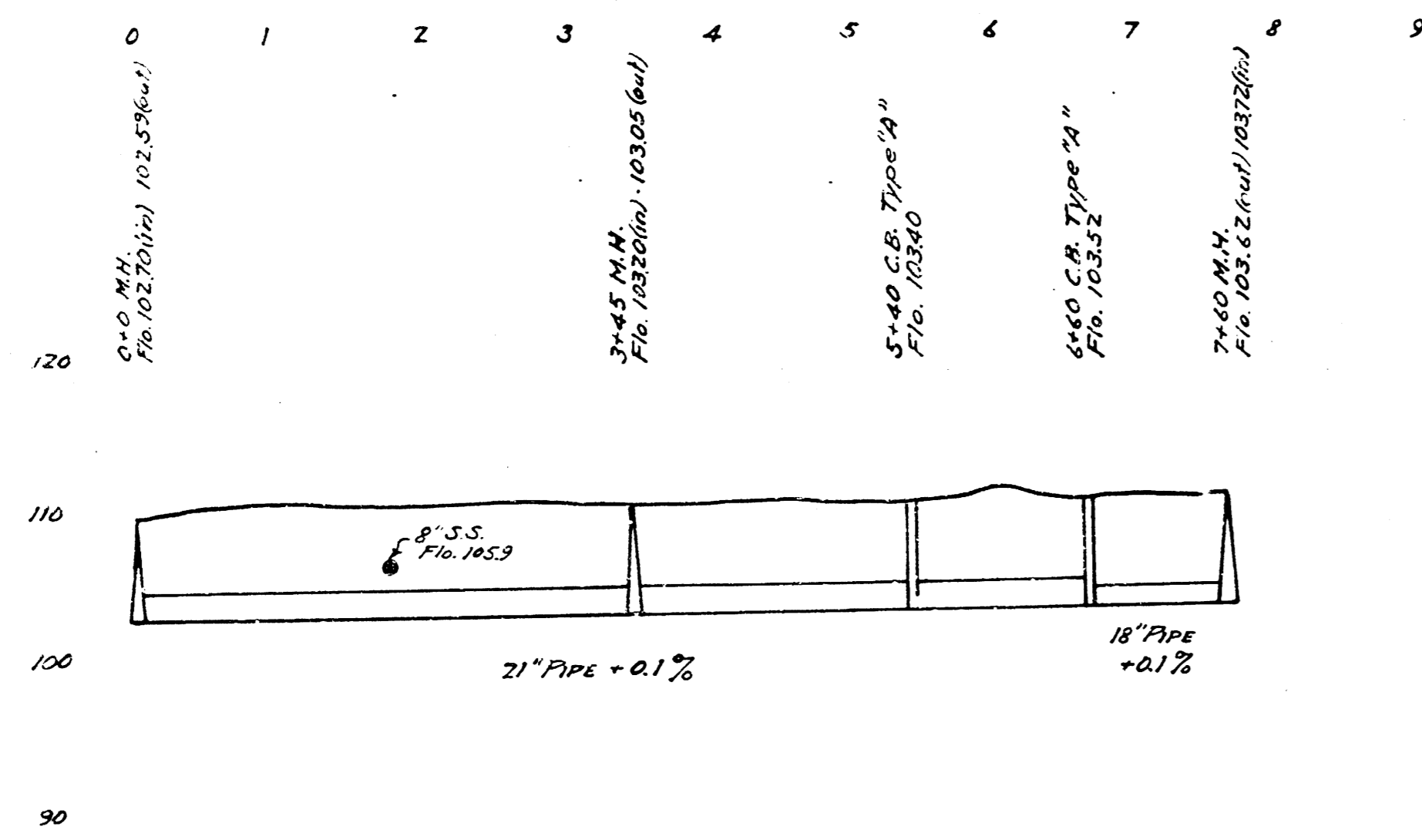
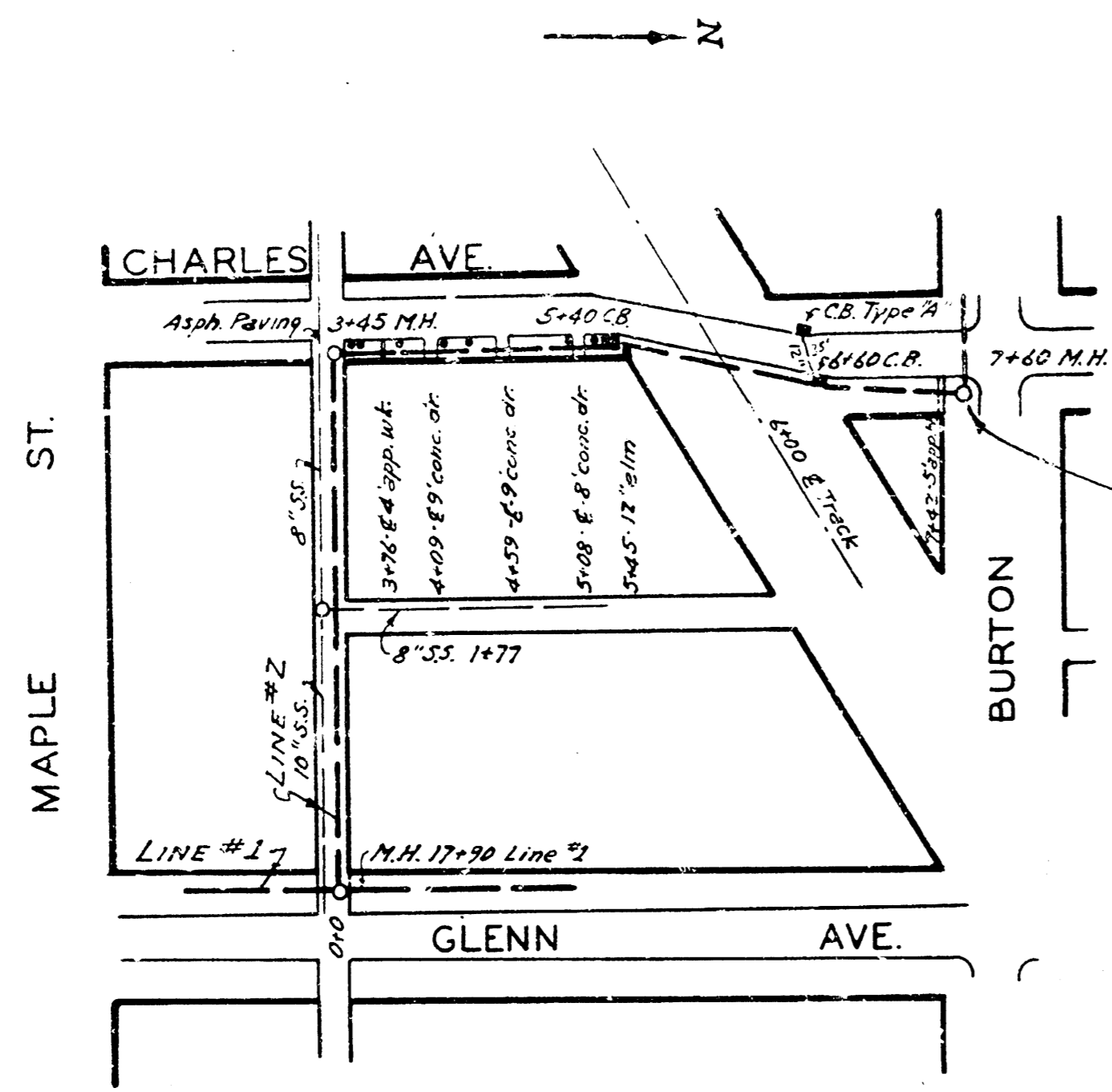
NOTE: 18" lines across R.R. R.M. are to built with flow lines in C.B. on S.E. of R.W. as high as possible



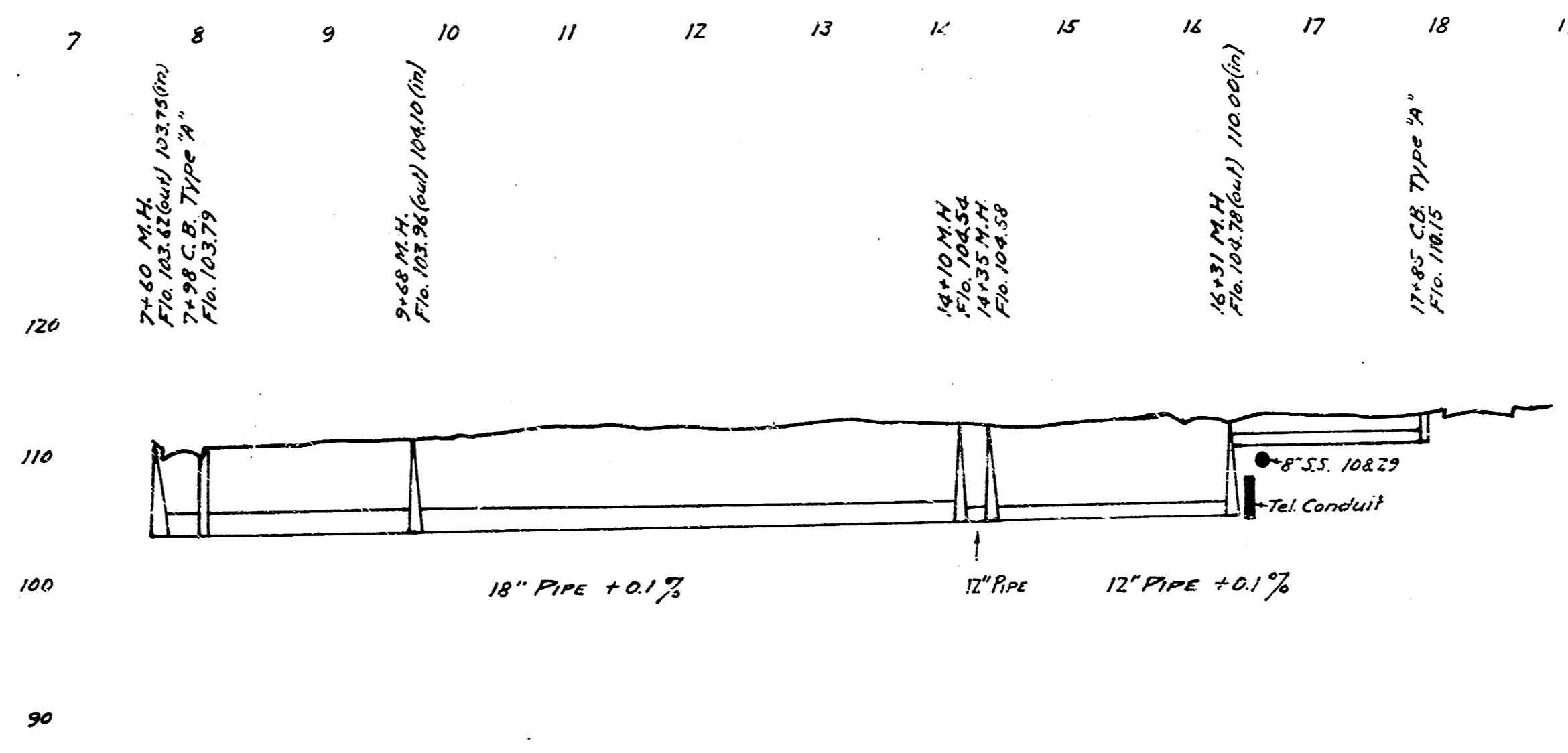
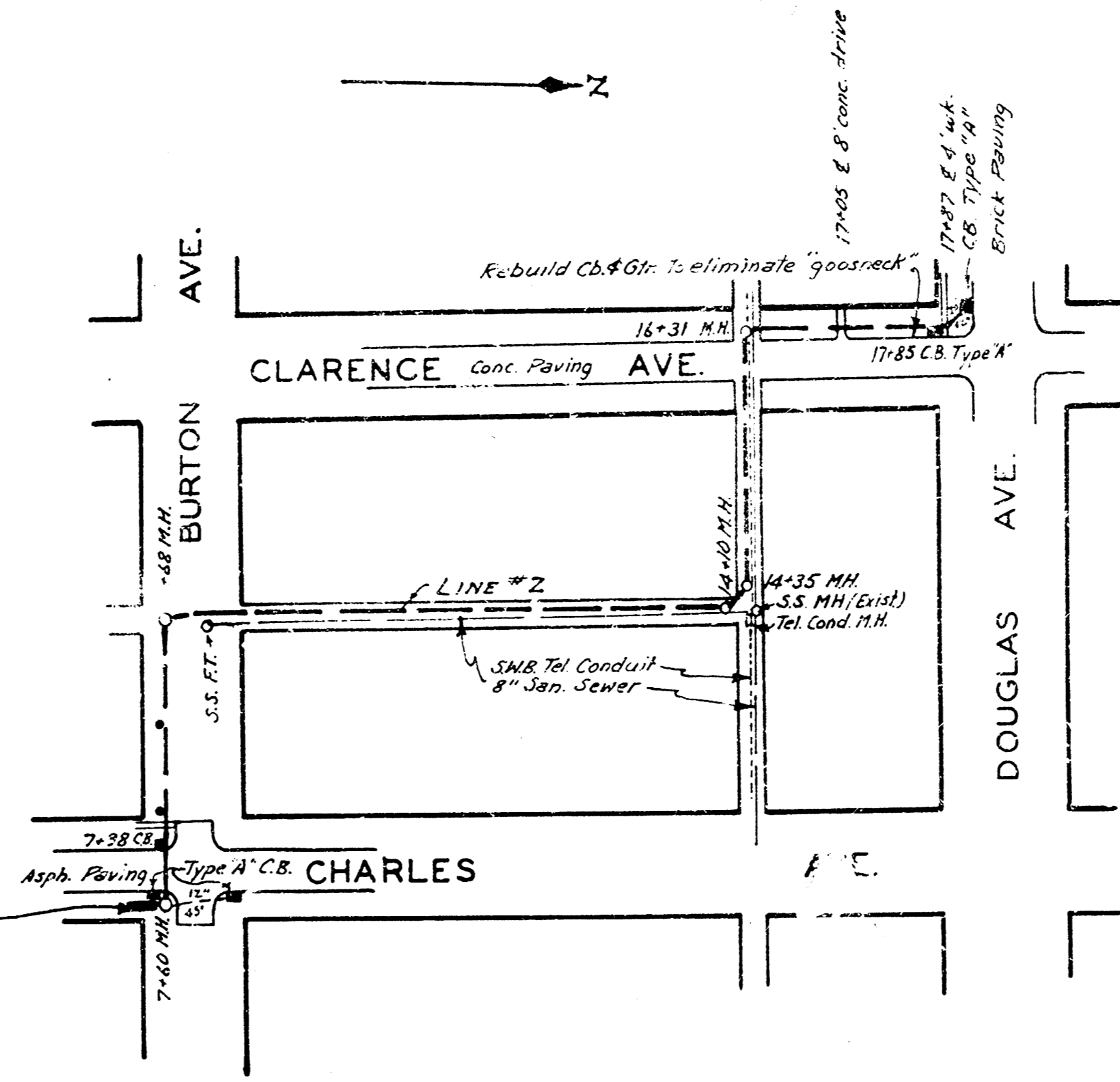
LINE 1



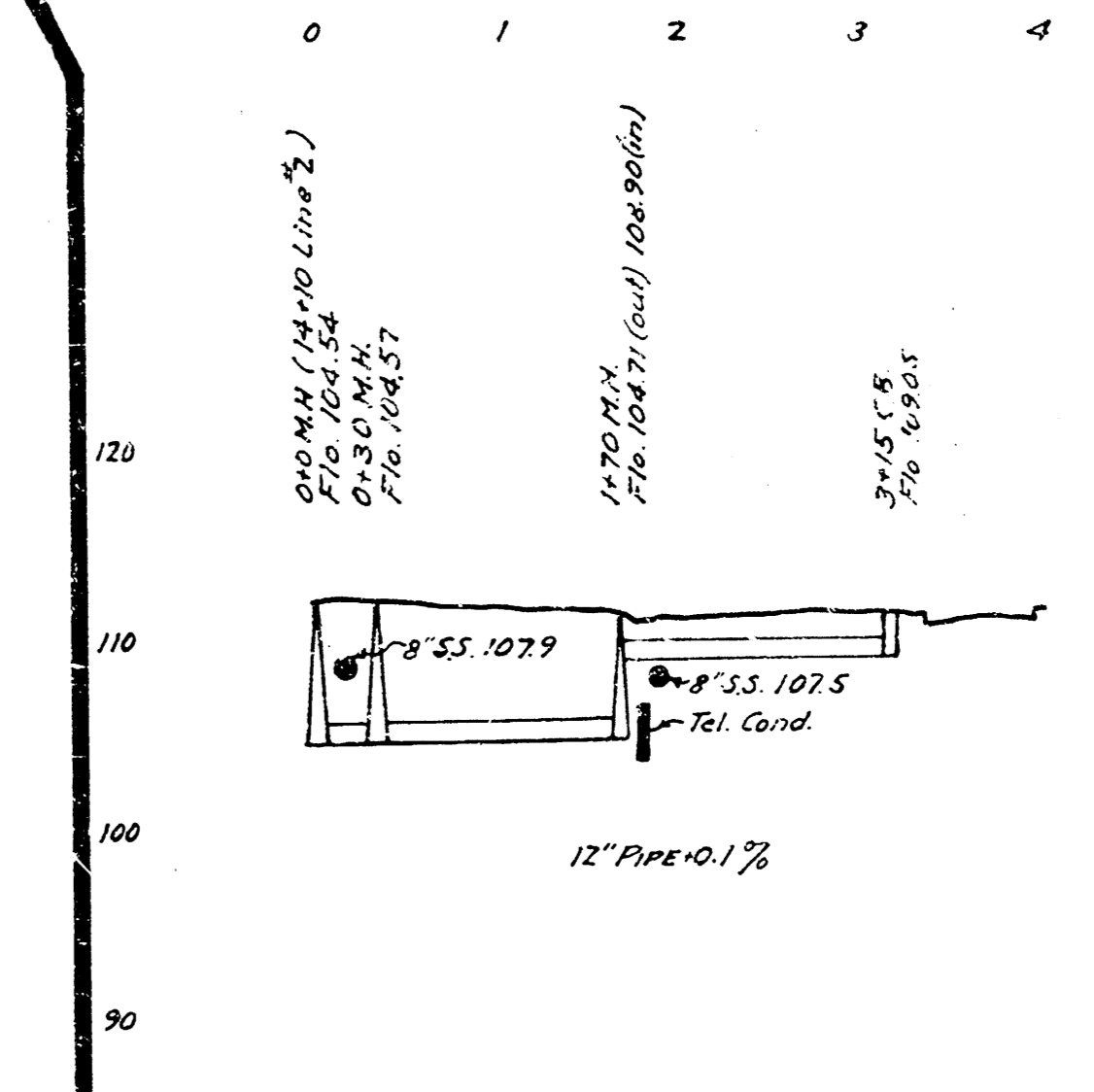
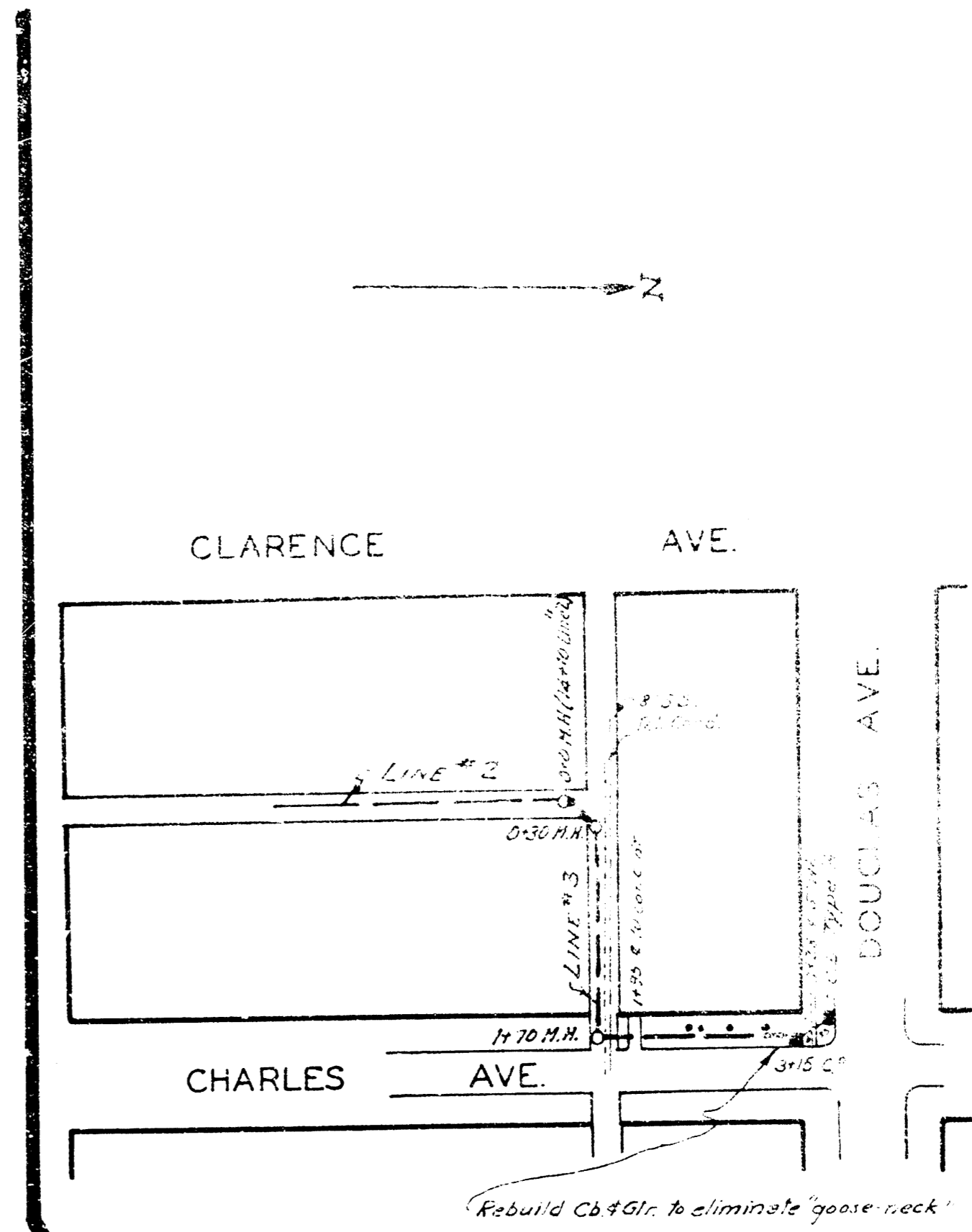
LINE 4



LINE 2

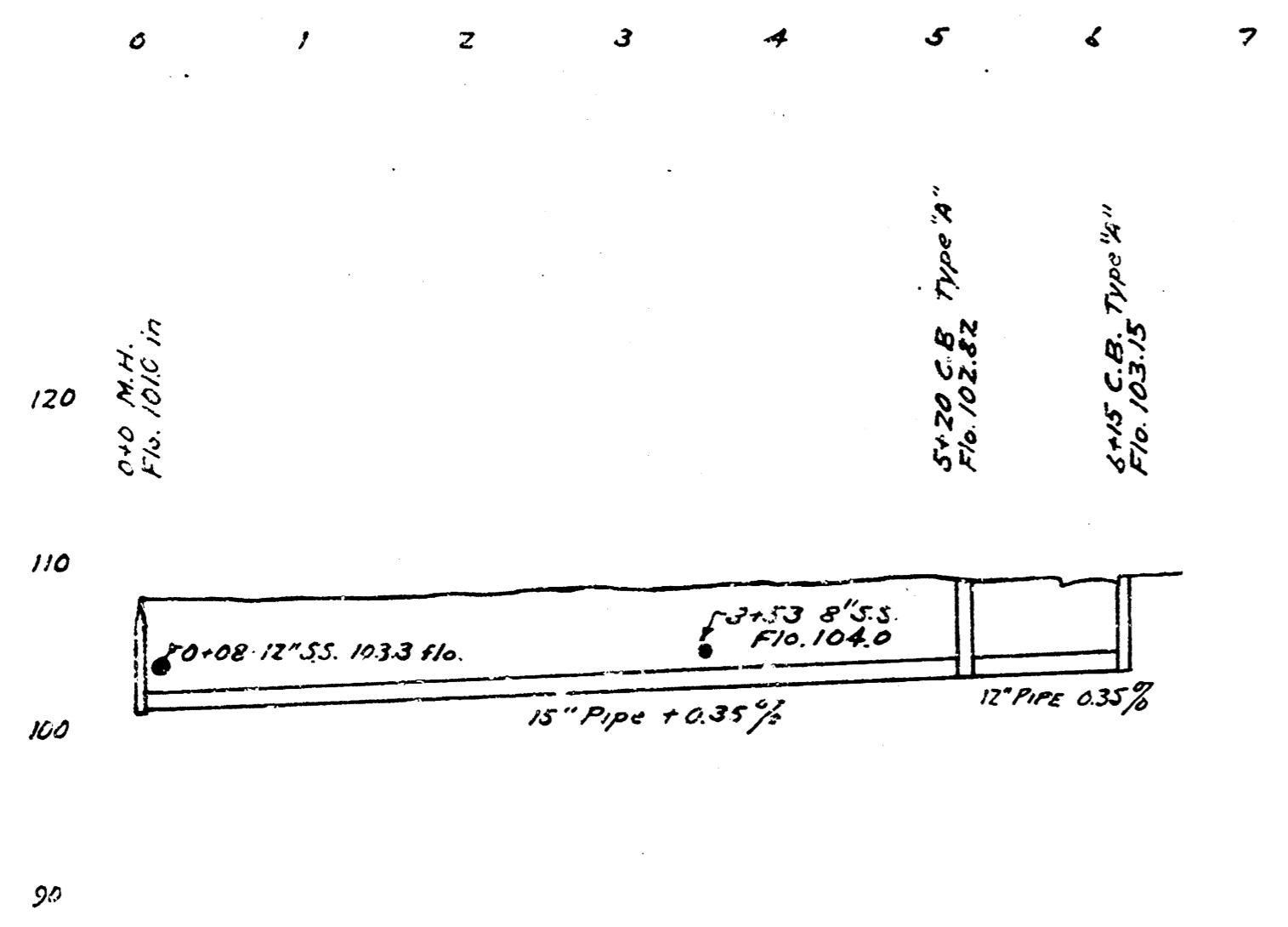
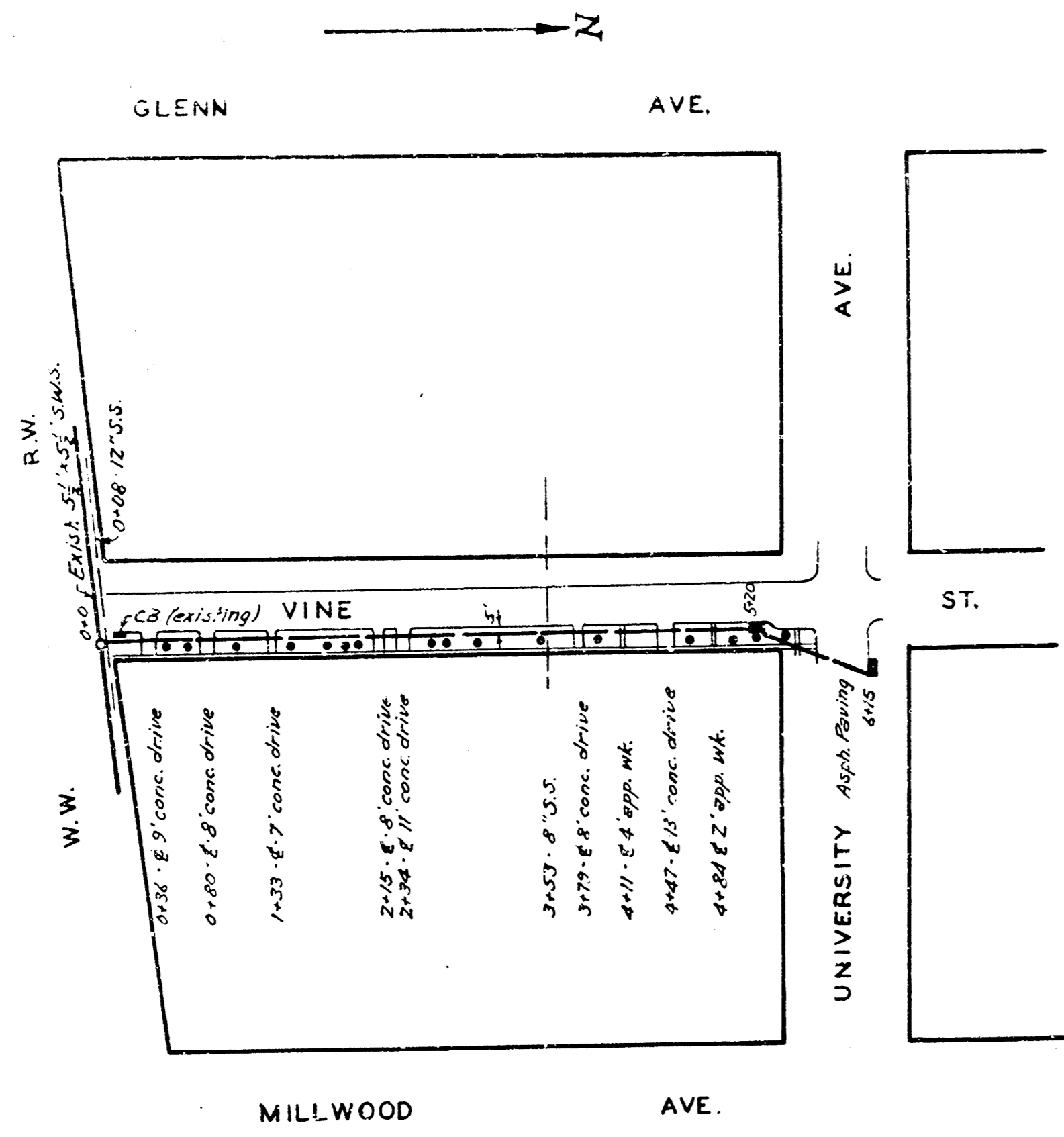


LINE 2

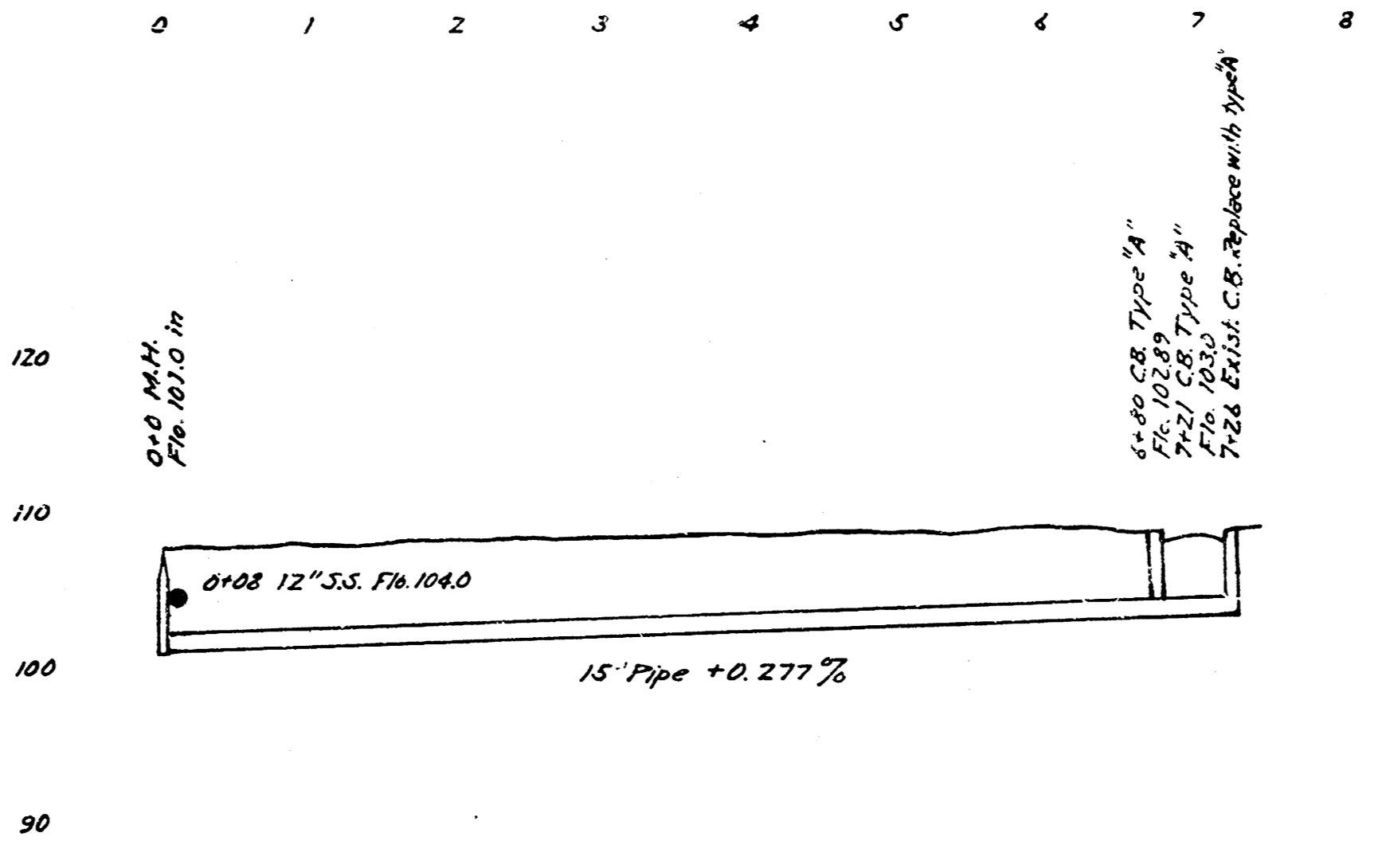
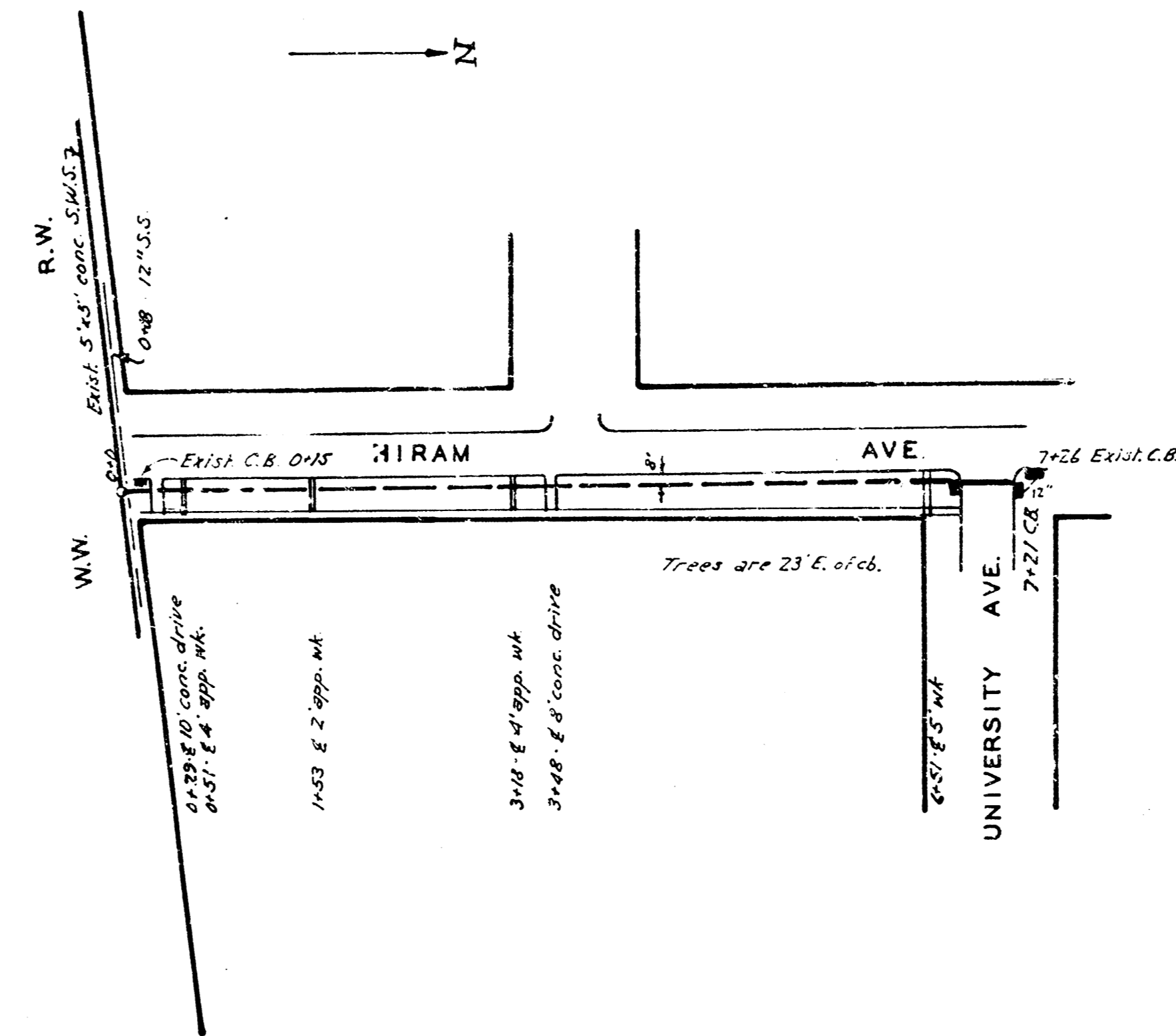


LINE 3

S.W.S.#30
ENGINEERING DEPARTMENT
CITY OF WICHITA, KANSAS



LINE 5



LINE 6