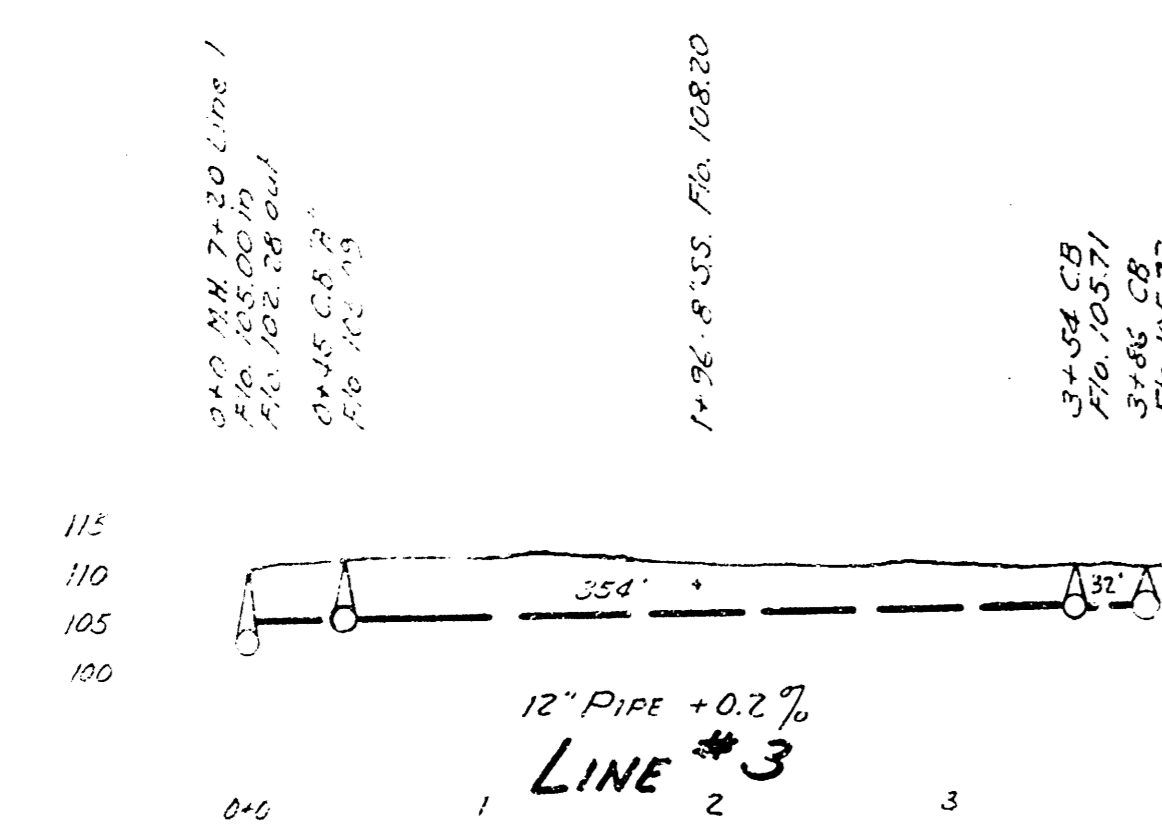
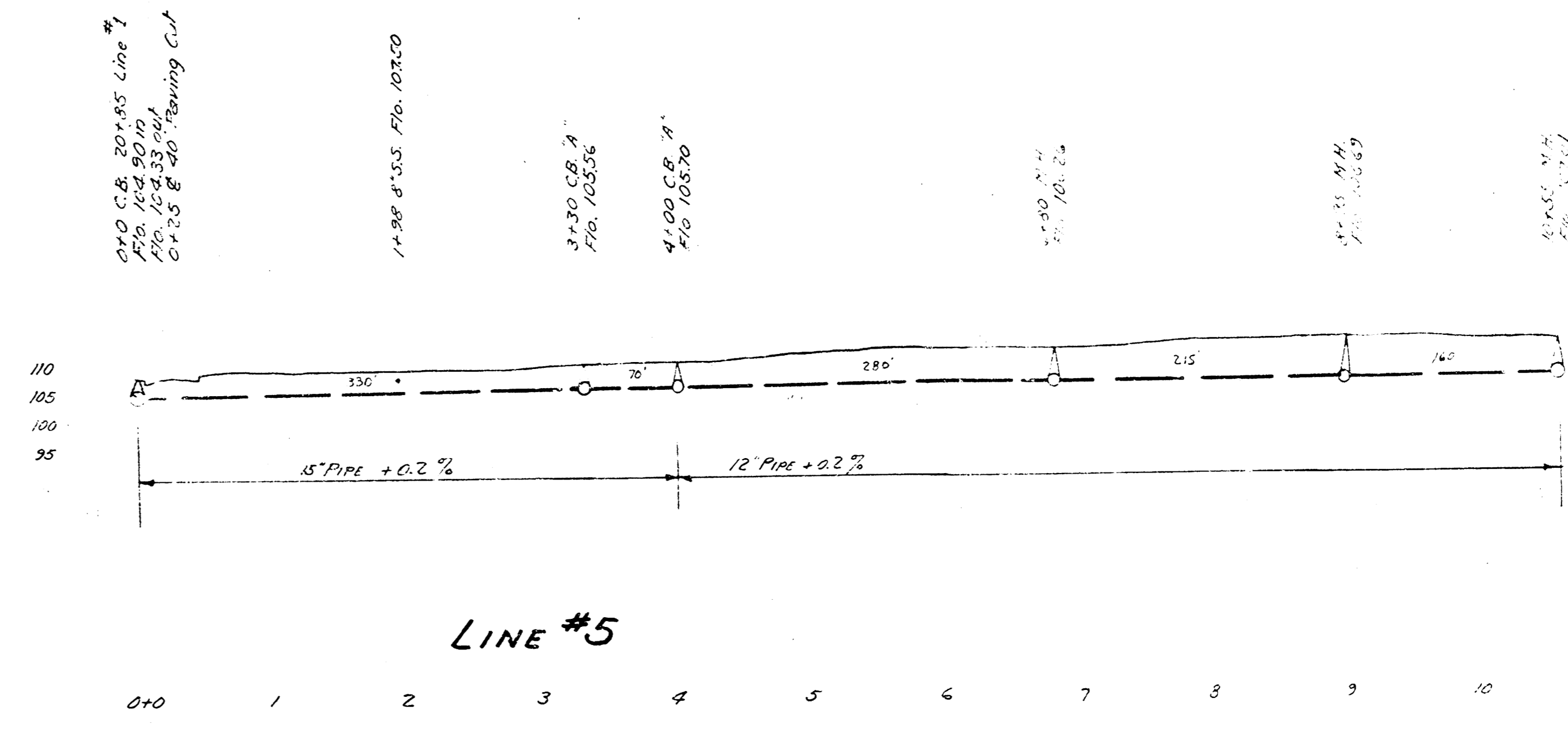
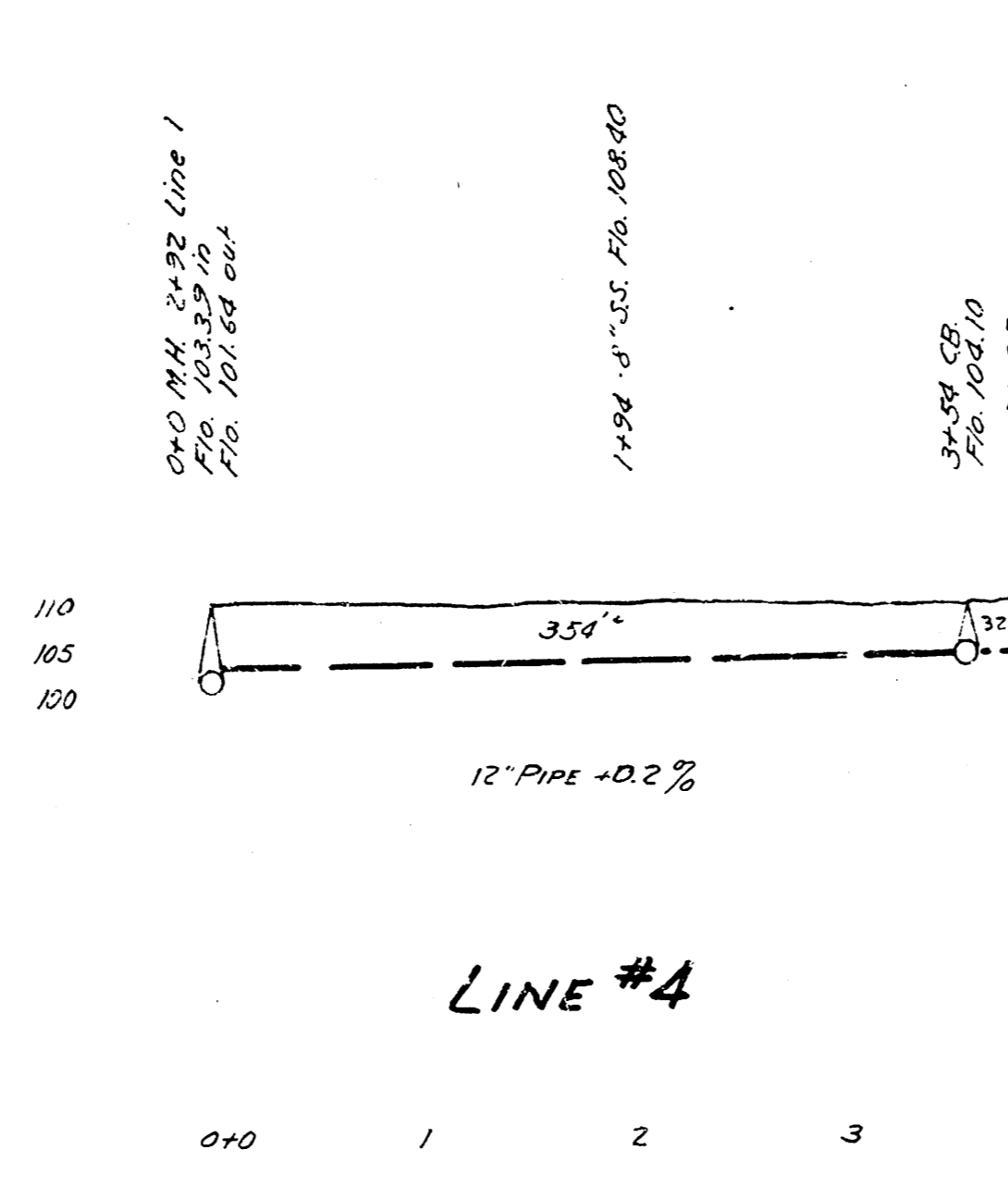
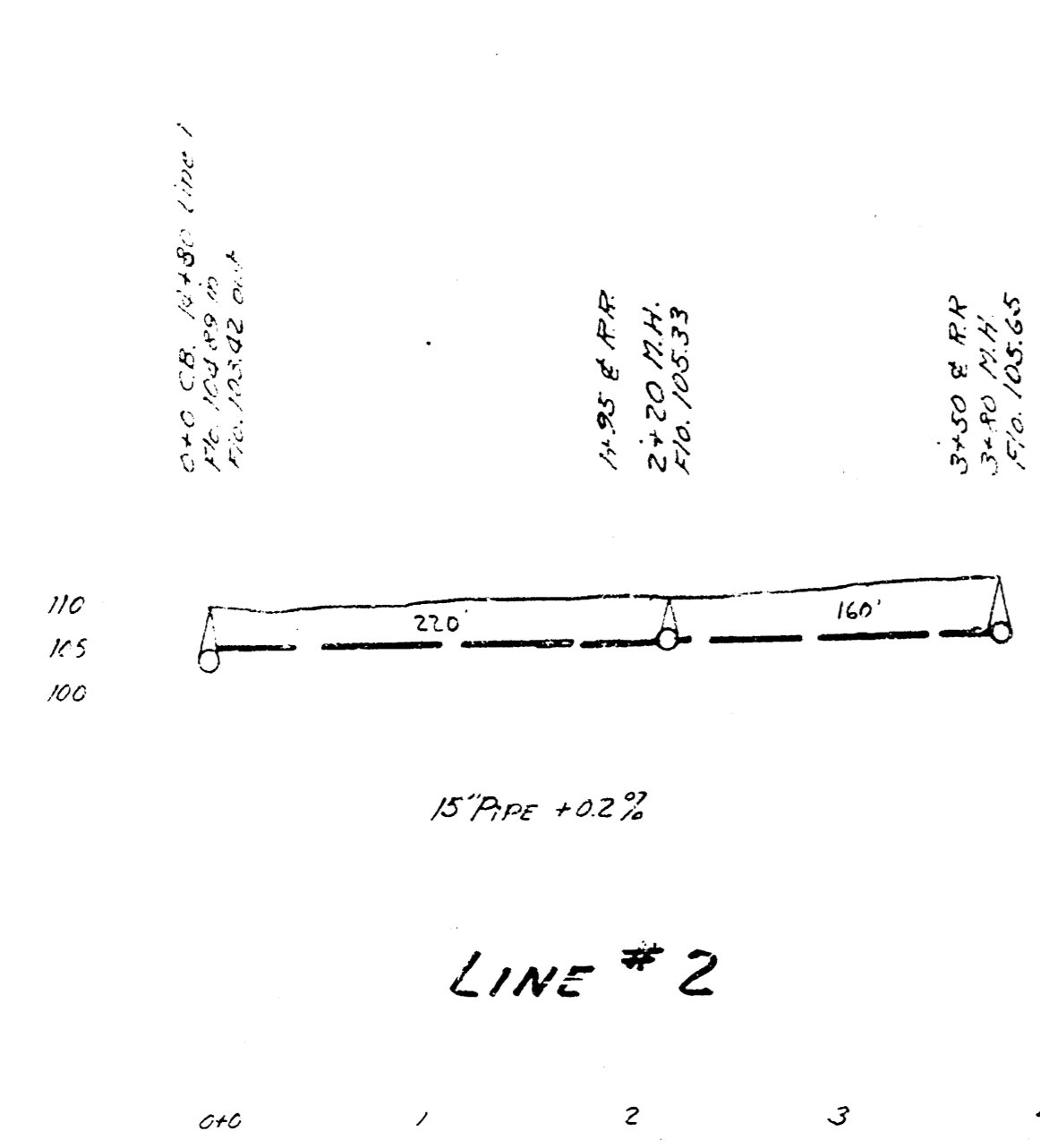
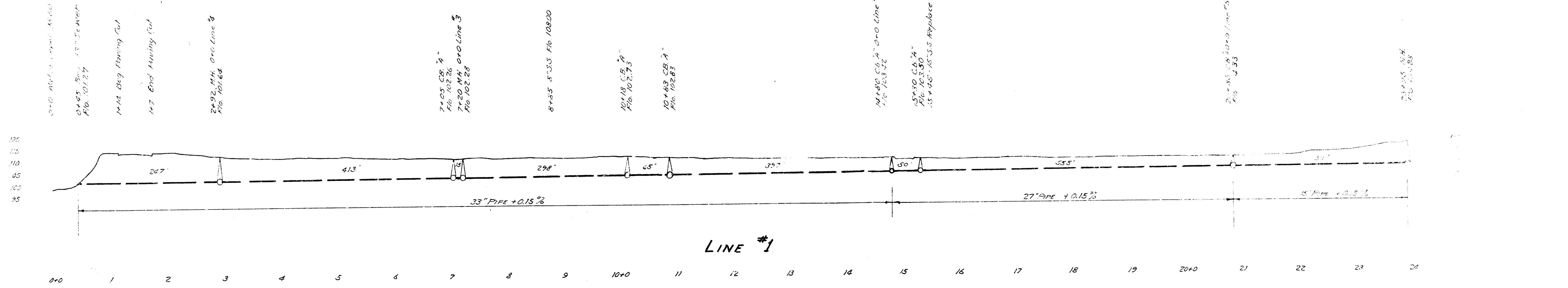


STORM WATER SEWER #31  
WICHITA, KANSAS

NOTE TO FIELD ENGINEER  
 1. All manholes to be installed at proposed elevations unless otherwise noted.  
 2. All manholes to be installed at proposed elevations unless otherwise noted.

ENGINEERING DEPARTMENT  
 CITY OF WICHITA, KANSAS  
 P.L. BROCKWAY CITY ENGINEER  
 APRIL 1942 SCALE 1" = 80'

STORM WATER SEWER #31  
WICHITA, KANS.



B.M. Elev. 109.72 Standard S.W. cor. Seneca St & 2nd St

