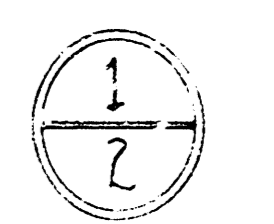
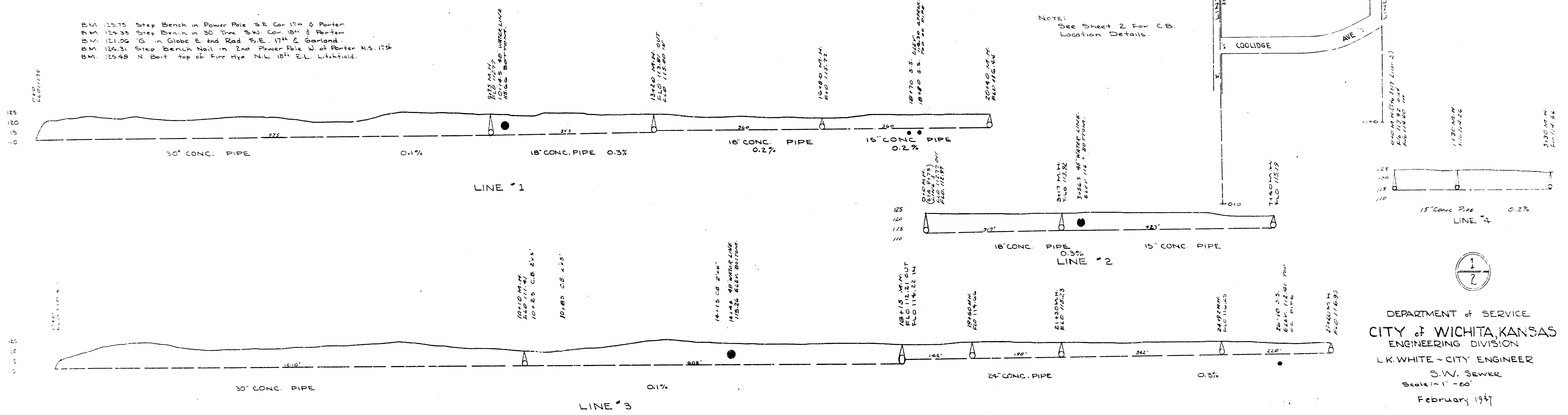


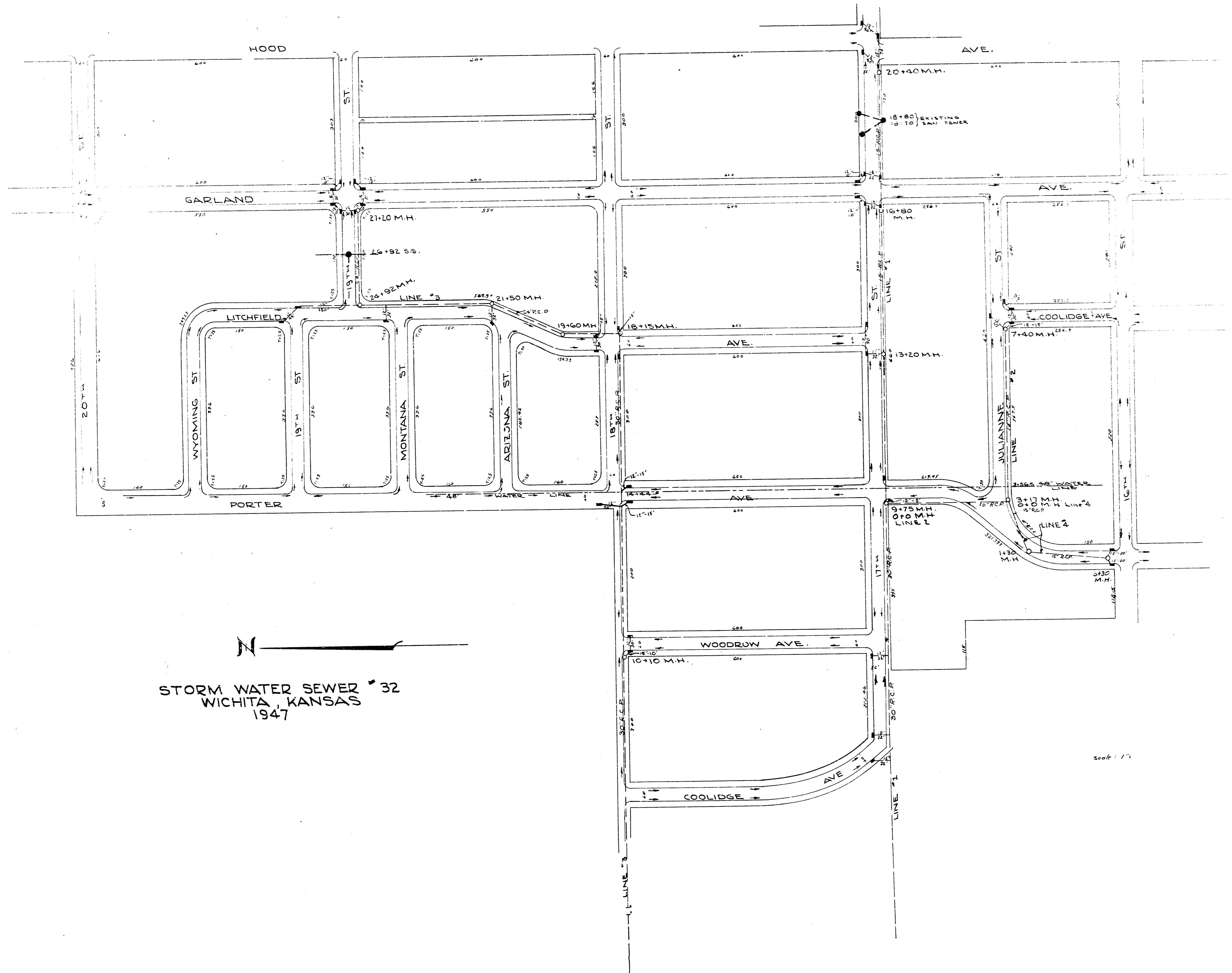
STORM WATER SEWER # 32
WICHITA, KANSAS
1947

BM 12475 Step Bench in Power Pole SE Cor. 17th & Porter
 BM 12433 Step Bench in 30' Tree SW Cor. 18th & Porter
 BM 12102 G in Globe E. end Rad. S.E. 17th & Garland
 BM 12431 Step Bench Nail in 2nd Power Pole W. of Porter N.S. 17th
 BM 12548 N. Bolt top of Fire Hydr. N.L. 18th E.L. Hitchfield.

NOTE:
See Sheet 2 For C.B.
Location Details.



DEPARTMENT OF SERVICE
 CITY OF WICHITA, KANSAS
 ENGINEERING DIVISION
 L.K. WHITE - CITY ENGINEER
 S.W. SEWER
 Scale: 1" = 60'
 February 1947



N
 STORM WATER SEWER # 32
 WICHITA, KANSAS
 1947

Scale: 1" = 10'