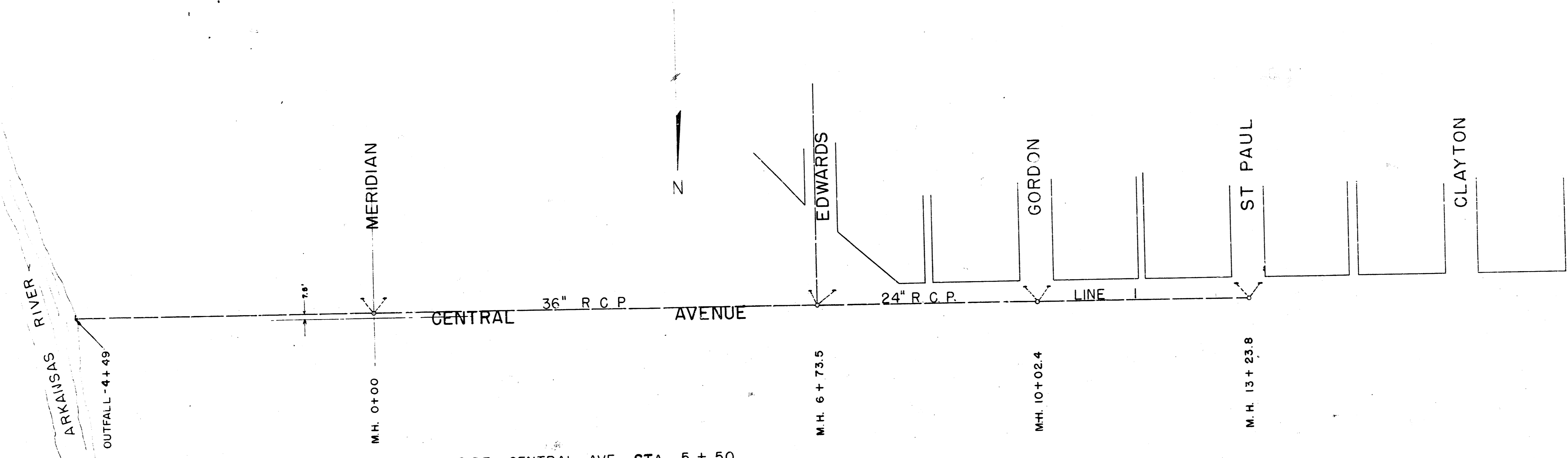
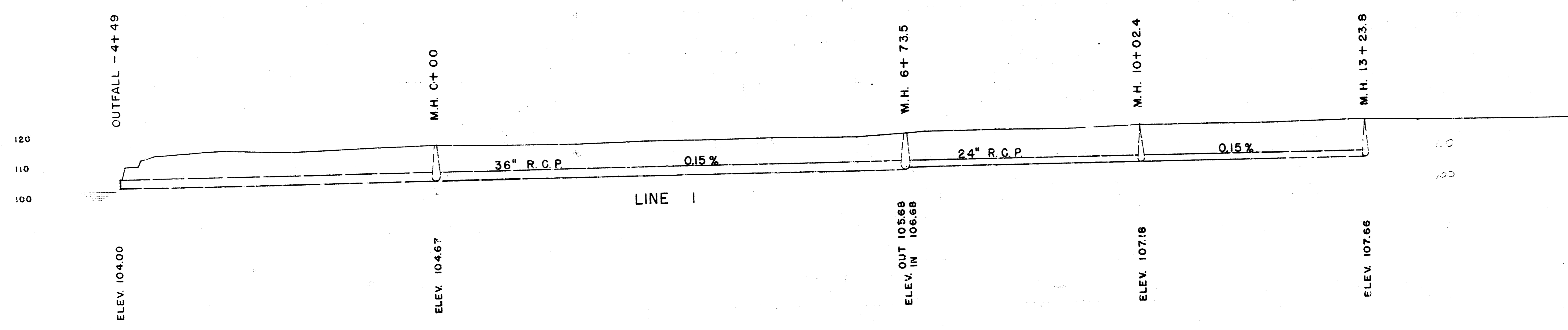
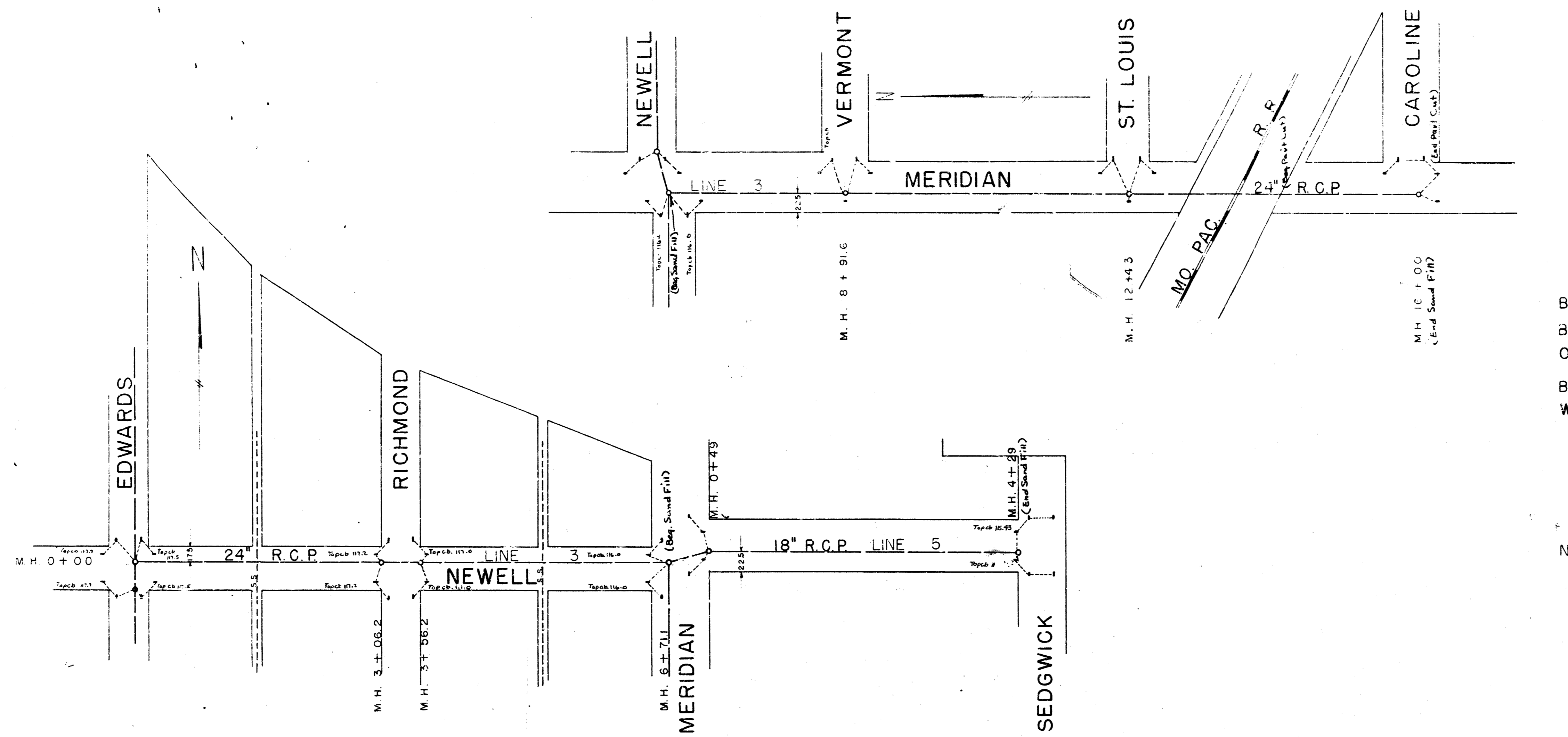


STORM WATER SEWER  
 DISTRICT NO. 36  
 CITY OF WICHITA  
 L.K. WHITE CITY ENGR.



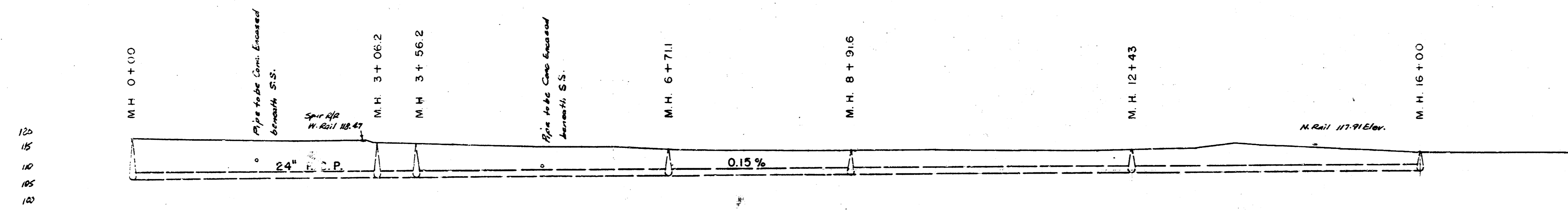
B.M. ELEV. 118.05 R.R. SPIKE IN T.P. N. SIDE CENTRAL AVE. STA 5 + 50  
 B.M. ELEV. 121.18 TOP OF IRON RING IN WEST CONCRETE HITCHING  
 POST N. SIDE CENTRAL AVE. AT CLAYTON AVE.



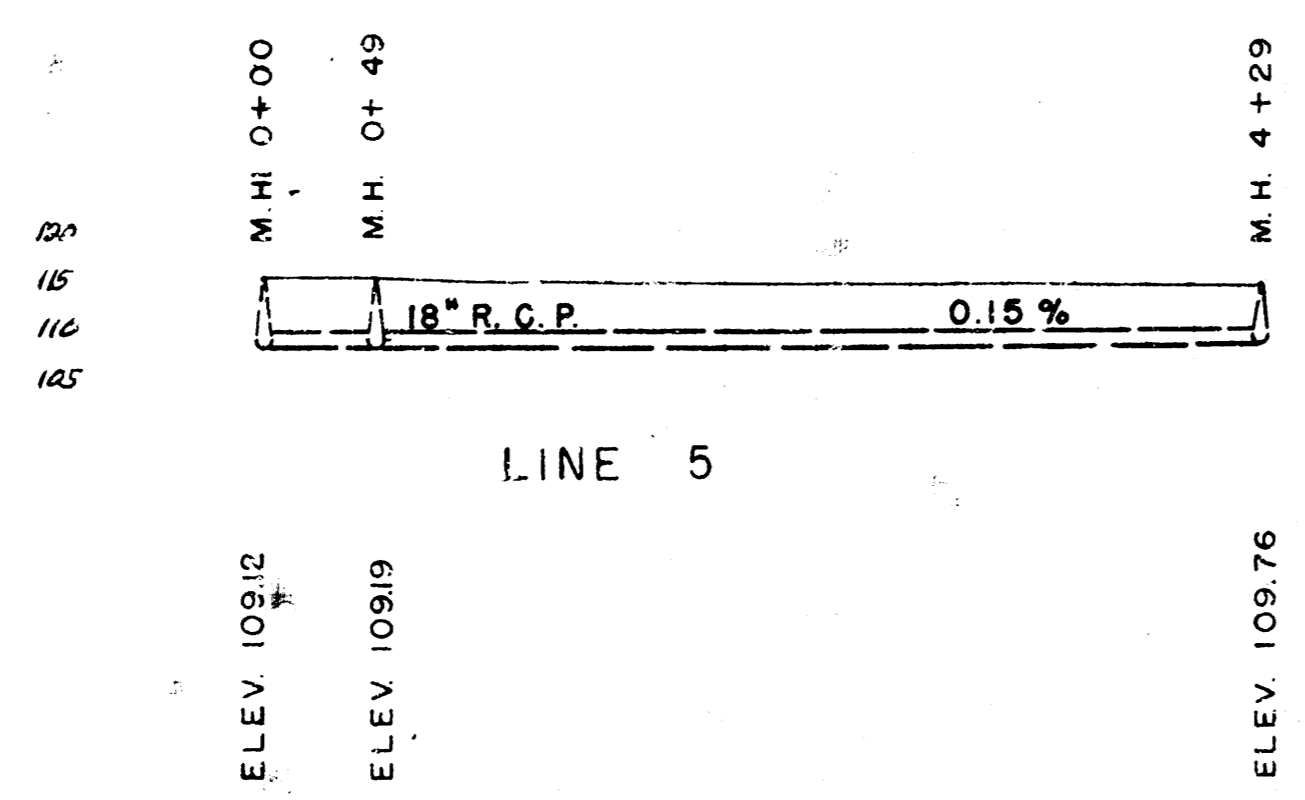


B.M. ELEV. 11849 "T" IN TROY F.P. MERIDIAN & VERMONT  
 B.M. ELEV. 116.95 SPIKE IN 36" ELM 20' S. OF E. ST. LOUIS W. SIDE OF MERIDIAN  
 B.M. ELEV. 118.51 "K" KELLER 3RD BLK. N.E. OF END OF WALK 2624 NEWELL

NOTE: USE 15" R.C.P. FOR ALL CATCH BASIN LEADS EXCEPT WHERE OTHERWISE NOTED.

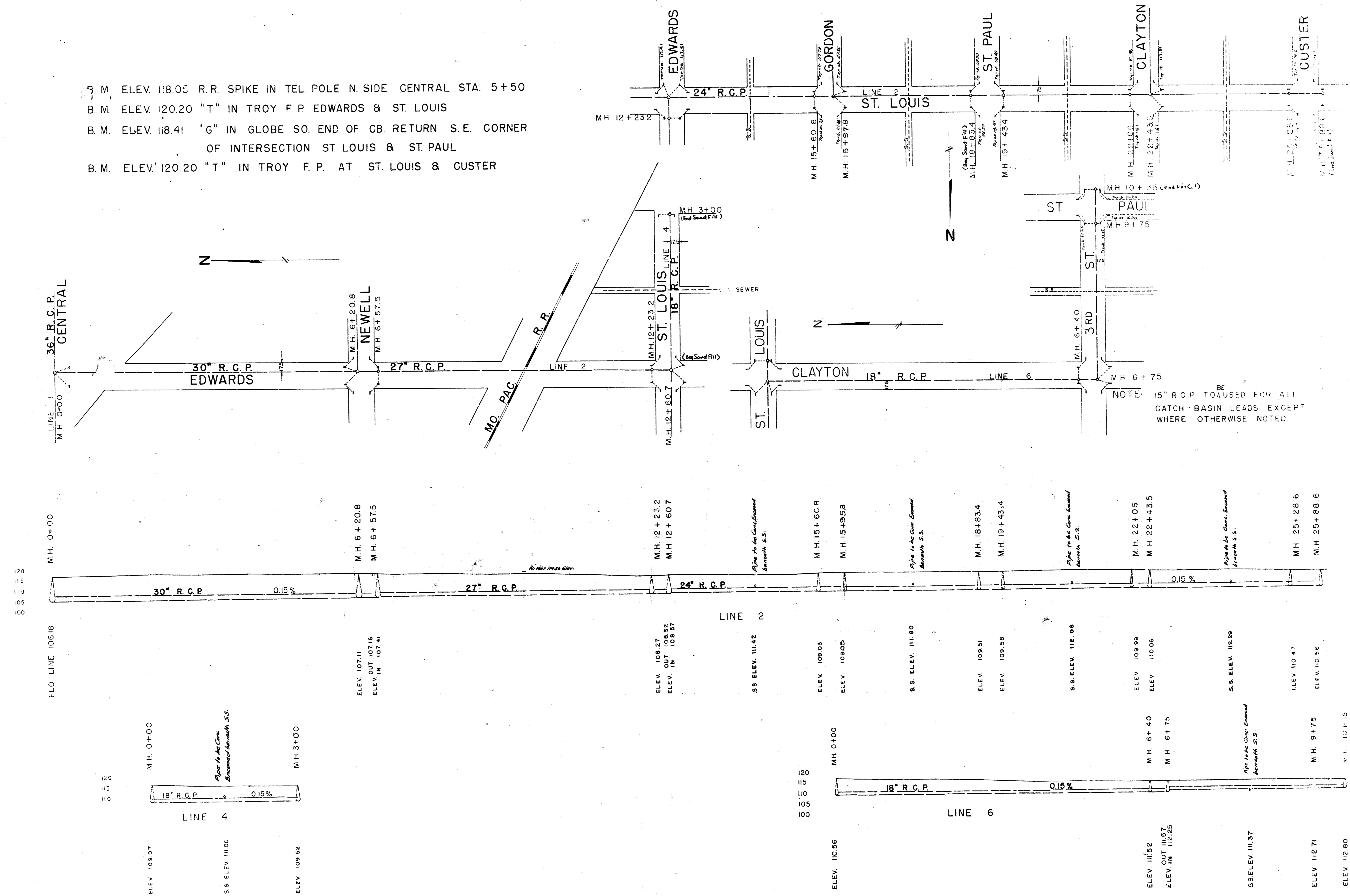


ELEV. 107.31  
 S.S. 112.09  
 ELEV. 108.07  
 ELEV. 108.15  
 S.S. 110.76  
 ELEV. 108.58  
 ELEV. 108.95  
 ELEV. 109.48  
 ELEV. 1001



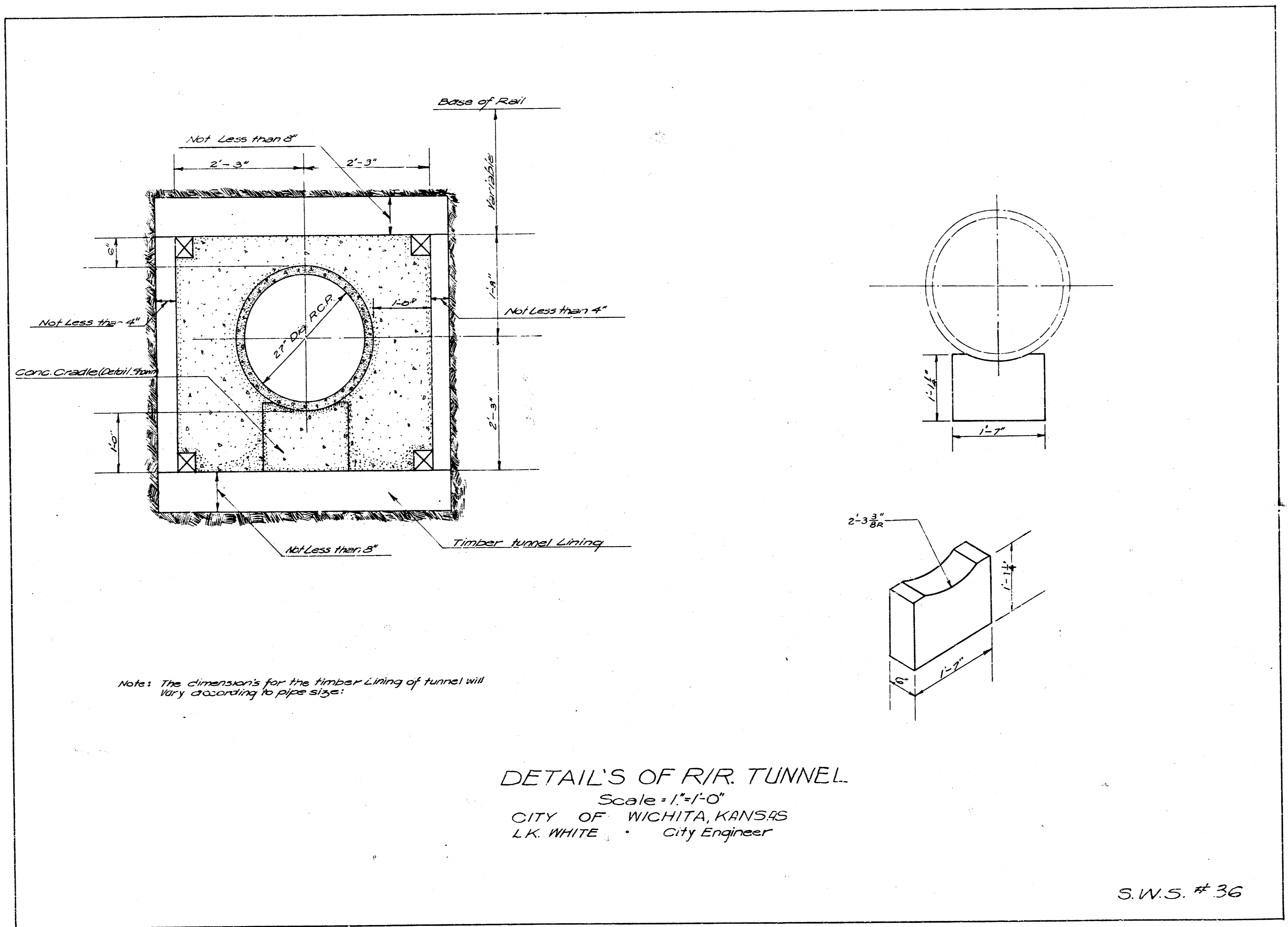
ELEV. 109.12  
 ELEV. 109.19  
 ELEV. 109.76

3 M. ELEV. 118.05 R.R. SPIKE IN TEL. POLE N. SIDE CENTRAL STA. 5+50  
 B.M. ELEV. 120.20 "T" IN TROY F.P. EDWARDS & ST. LOUIS  
 B.M. ELEV. 118.41 "G" IN GLOBE SO. END OF CB. RETURN S.E. CORNER  
 OF INTERSECTION ST. LOUIS & ST. PAUL  
 B.M. ELEV. 120.20 "T" IN TROY F.P. AT ST. LOUIS & CUSTER

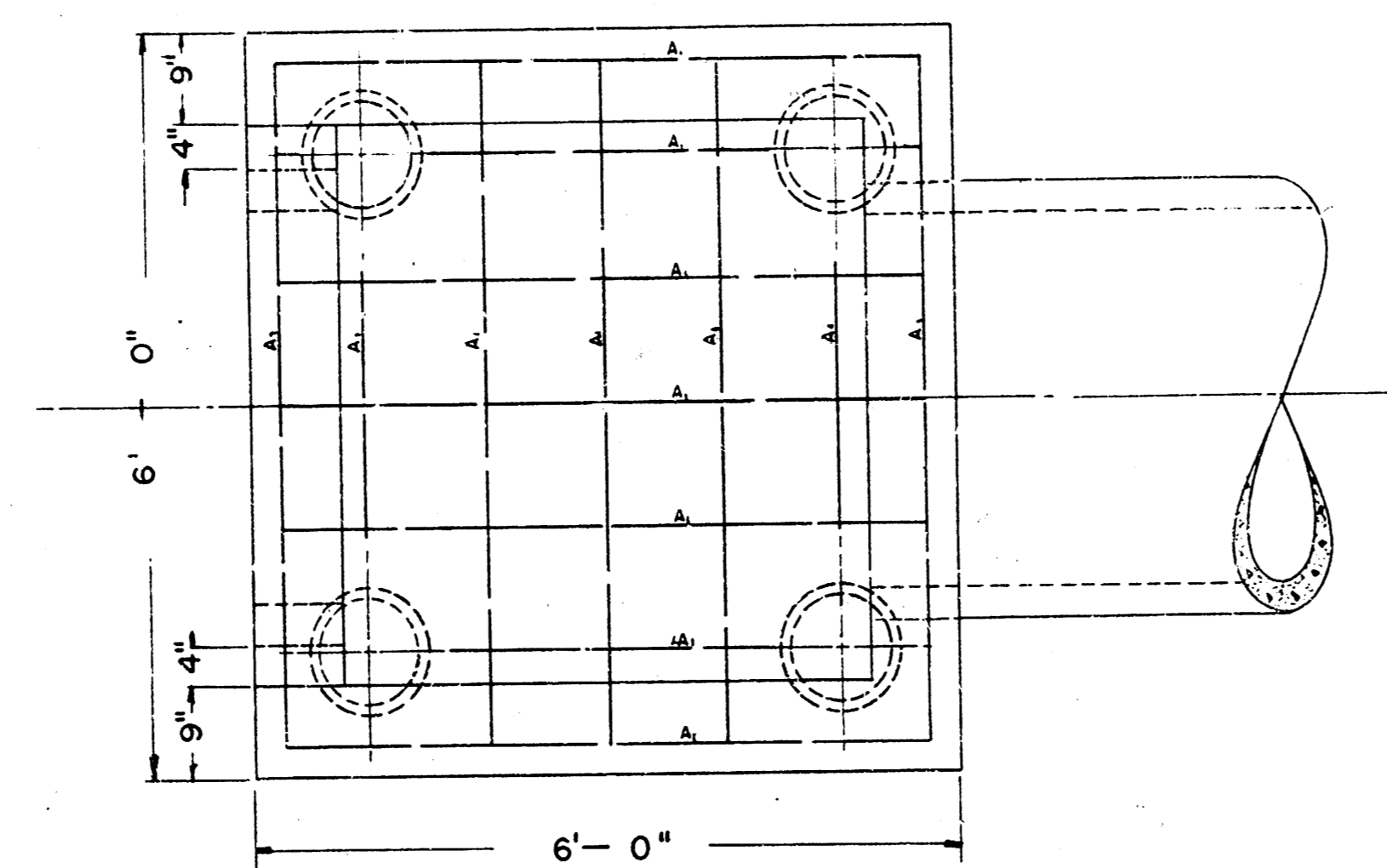


S.W.S. NO. 36

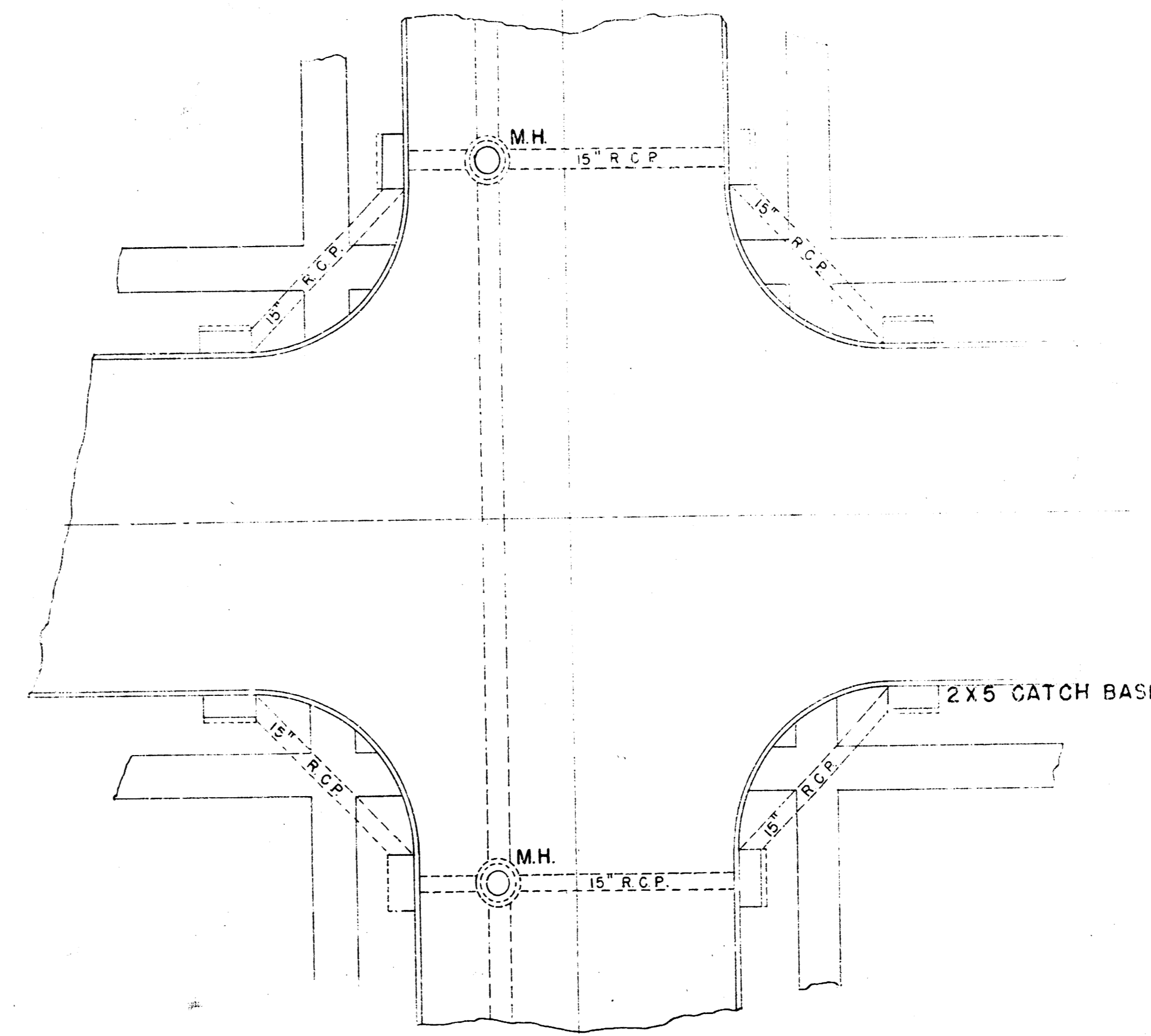




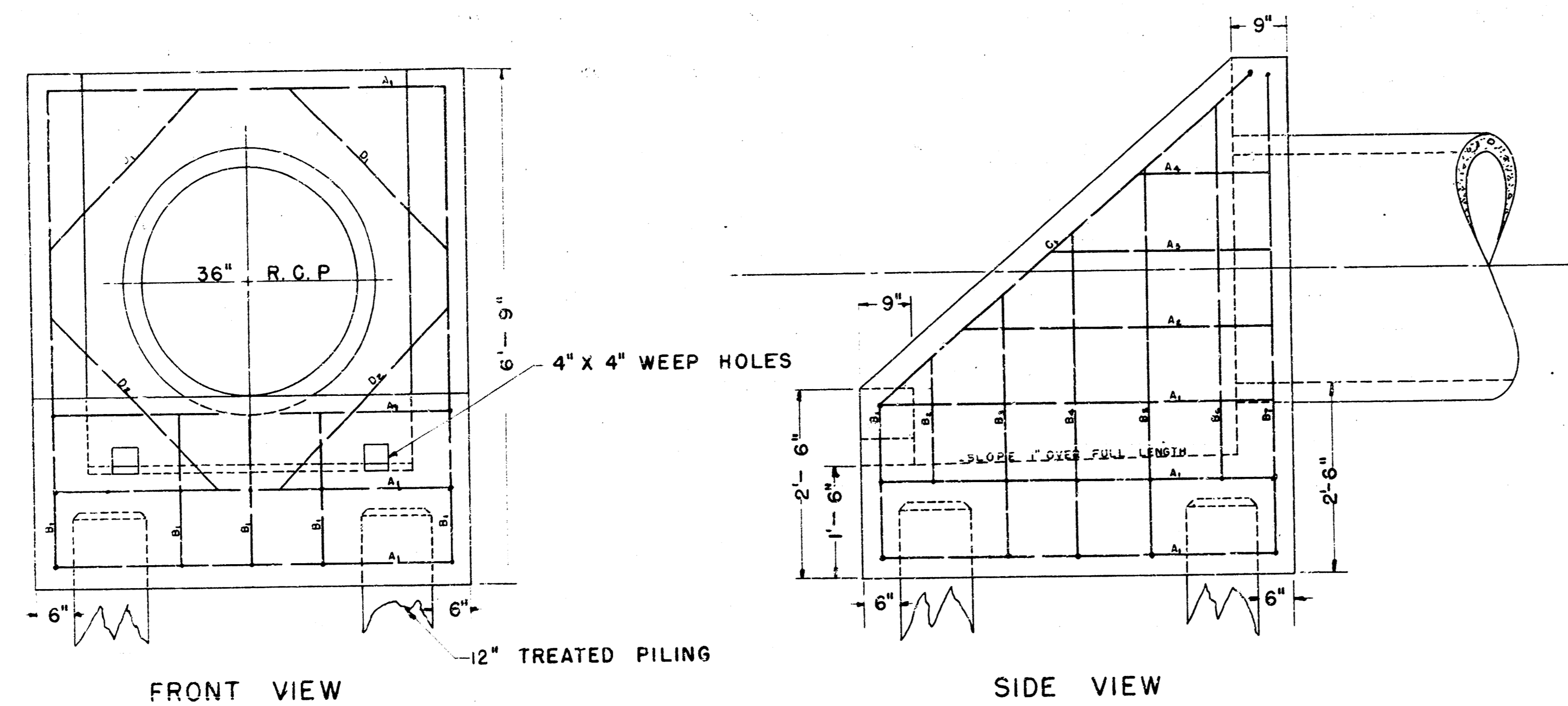
MATERIAL LIST			
BAR	NO	LENGTH	REMARKS
A <sub>1</sub>	29	5' - 6"	1/2" RD
A <sub>2</sub>	2	2' - 0"	
A <sub>3</sub>	2	3' - 2"	
A <sub>4</sub>	2	4' - 4"	
B <sub>1</sub>	5	2' - 0"	
B <sub>2</sub>	2	1' - 9"	
B <sub>3</sub>	2	3' - 6"	
B <sub>4</sub>	2	4' - 3"	
B <sub>5</sub>	2	5' - 2"	
B <sub>6</sub>	2	5' - 0"	
B <sub>7</sub>	2	6' - 4"	
C <sub>1</sub>	2	6' - 9"	
D <sub>1</sub>	2	3' - 0"	
D <sub>2</sub>	2	3' - 4"	1/2" RD
REINFORCING STEEL		190 LBS.	
CONCRETE		4.1 CU. YDS.	
TREATED PILING		12" DIA. X 30' LG.	



TOP VIEW



TYPICAL INTERSECTION  
SHOWING MANHOLE & CATCH BASIN INSTALLATION  
SCALE 1" = 10'



FRONT VIEW

SIDE VIEW

OUTFALL STRUCTURE

3/4" = 1'

STORM WATER SEWER  
DISTRICT NO. 36  
CITY OF WICHITA  
L. K. WHITE CITY ENGR.