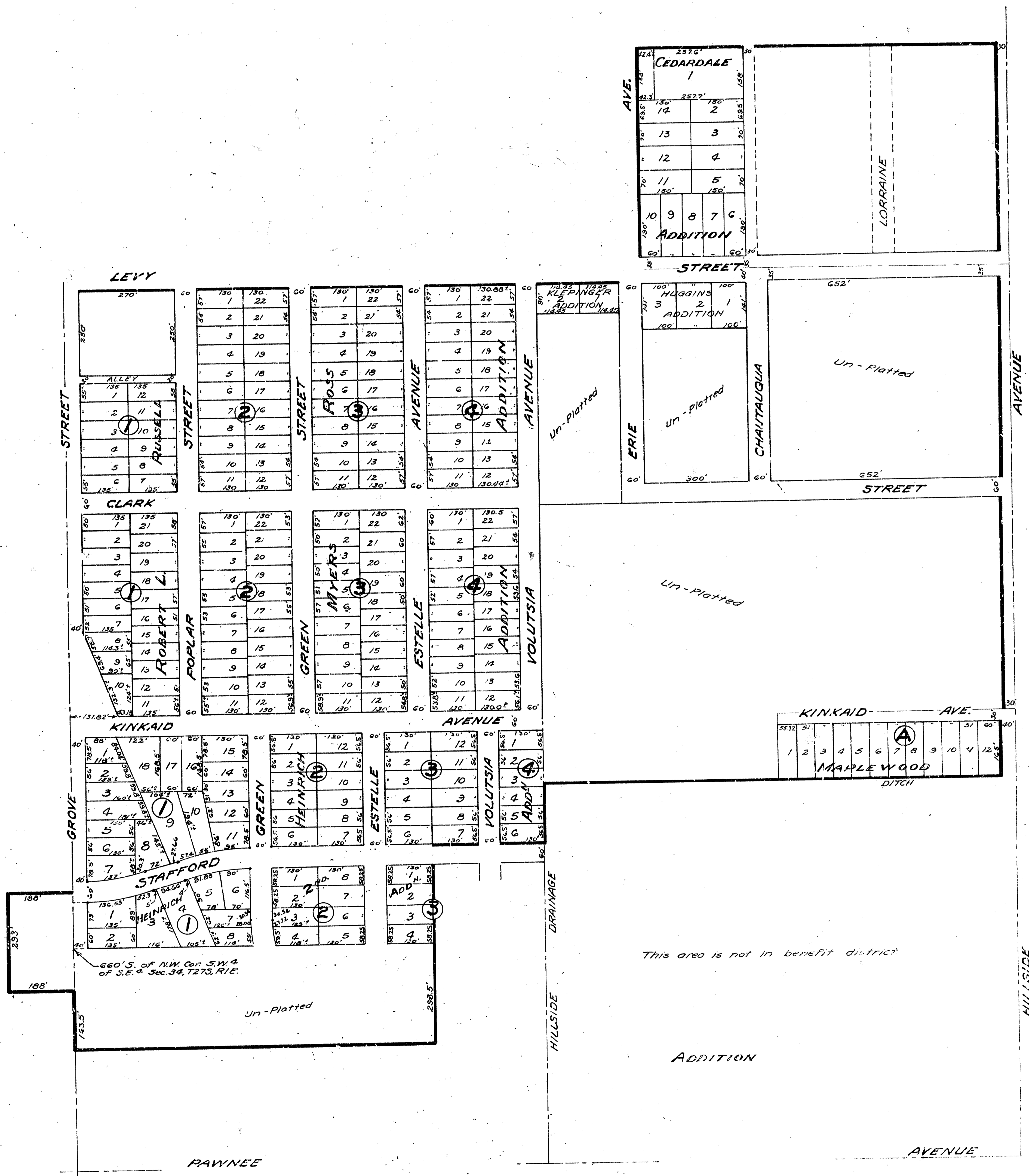


BENEFIT DISTRICT
STORM WATER SEWER DISTRICT NO. 52
CITY OF WICHITA KANSAS



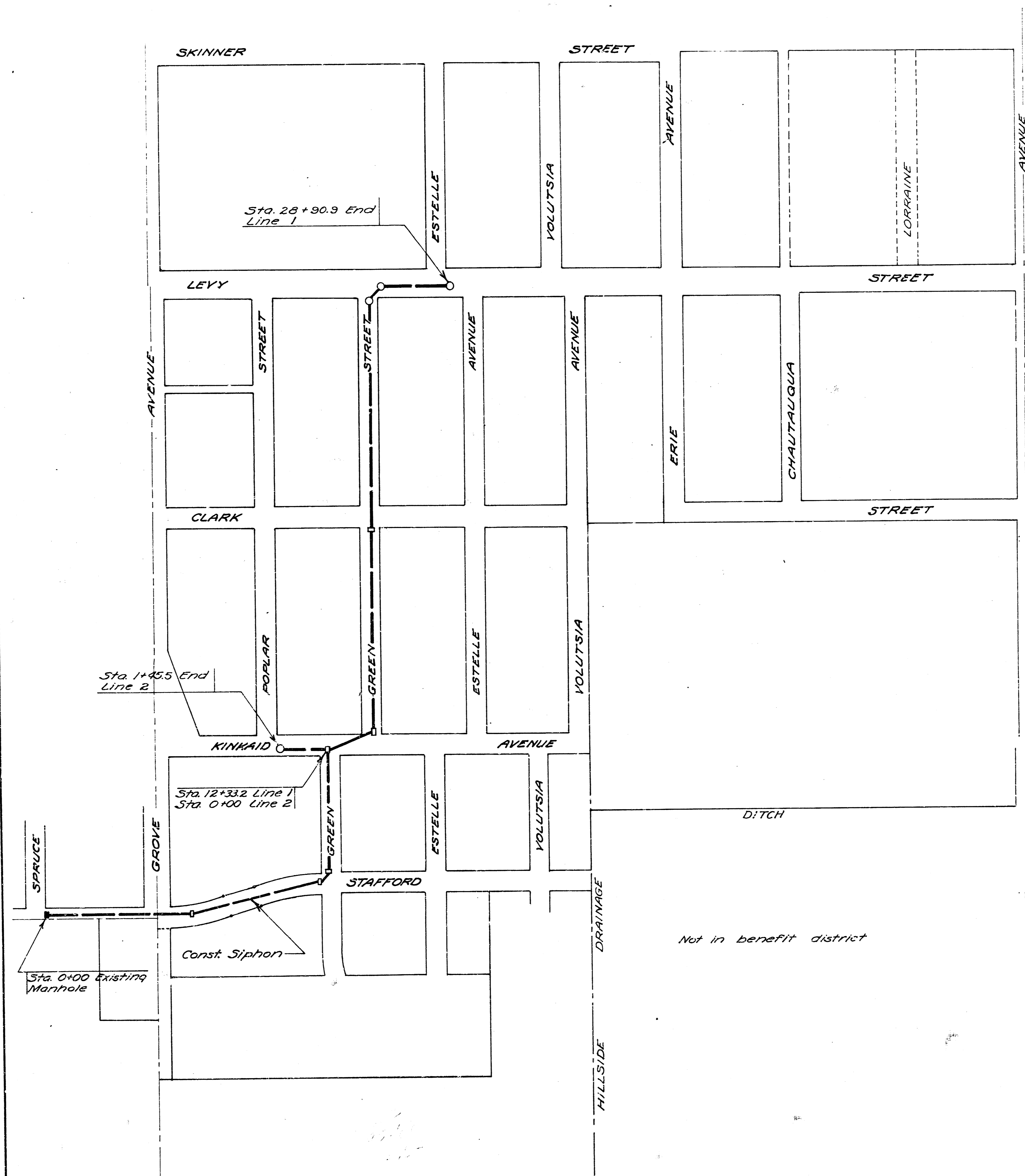
LOCATION MAP
STORM WATER SEWER DISTRICT NO. 52
CITY OF WICHITA KANSAS

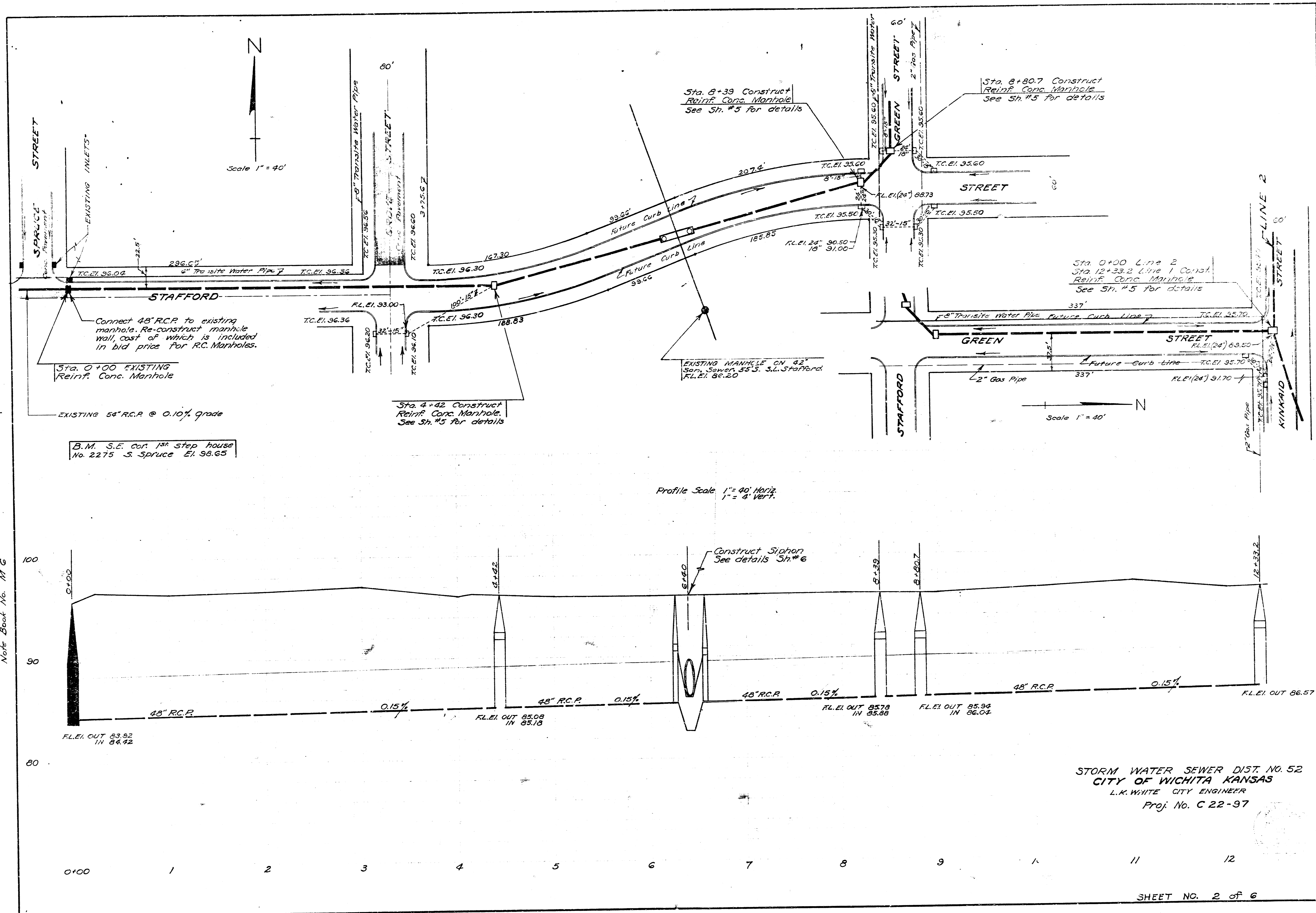
L.K. WHITE CITY ENGINEER

PROJECT NO. C 22 - 97

DECEMBER 1952

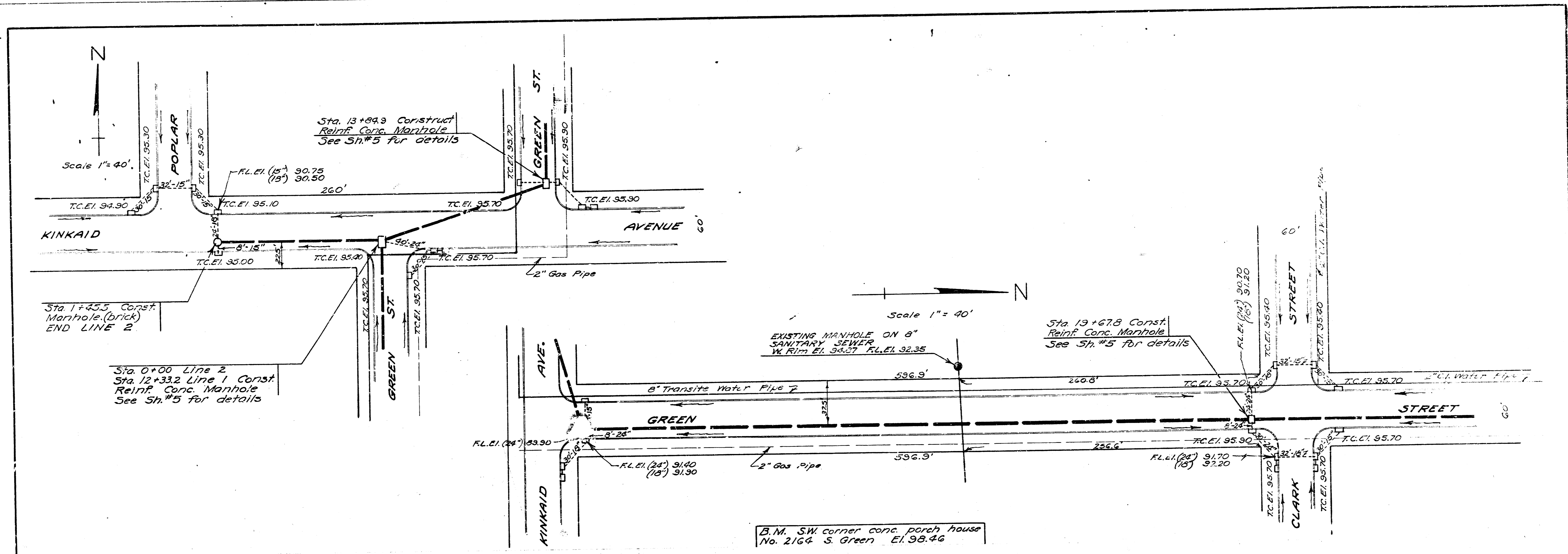
SHEET NO. 1 OF 6 SHEETS



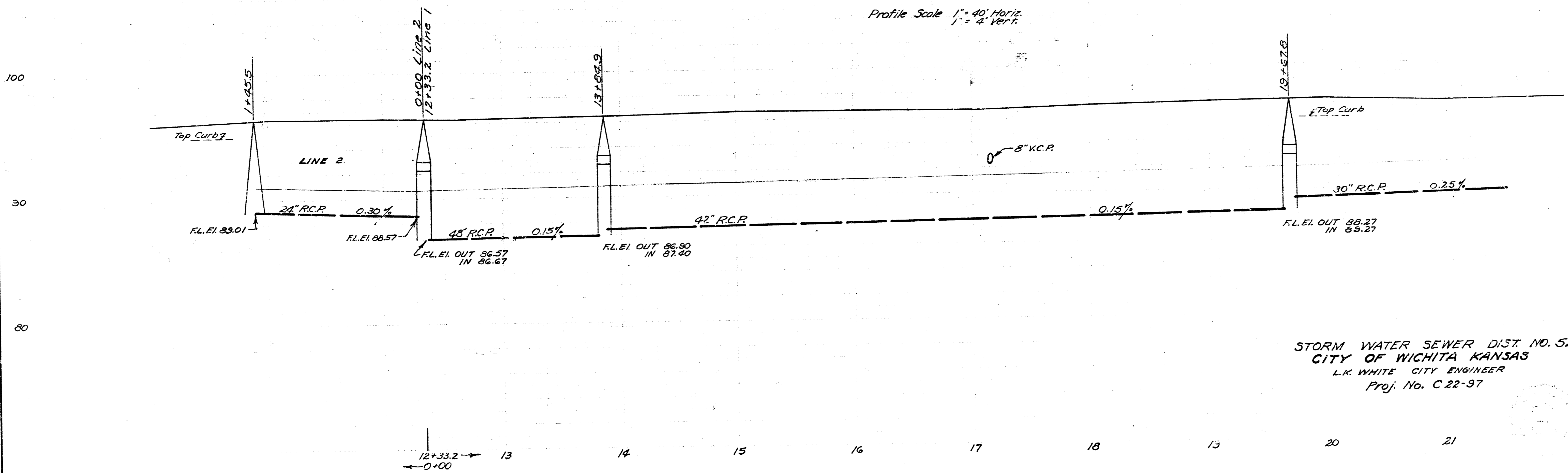


Date: Dec. 1952
 Drawn by: J.L.A.
 Checked by: Mark Book No. M G

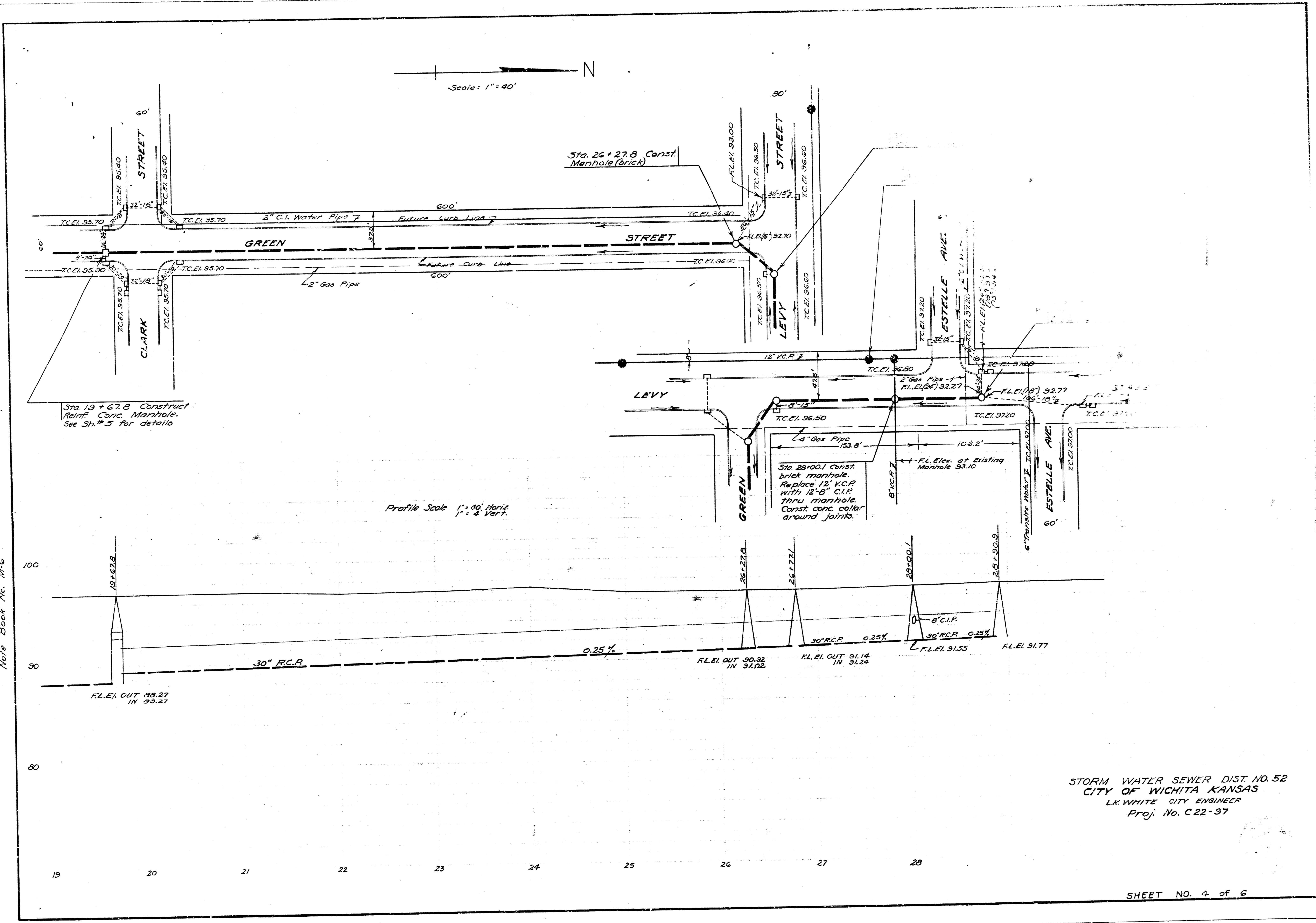
STORM WATER SEWER DIST. NO. 52
 CITY OF WICHITA KANSAS
 L.K. WHITE CITY ENGINEER
 Proj. No. C 22-97



Date 12/15/52
 Drawn by J.L.A.
 Checked by Mark Good Sta. 11-6



STORM WATER SEWER DIST. NO. 52
 CITY OF WICHITA KANSAS
 L.K. WHITE CITY ENGINEER
 Proj. No. C.22-97

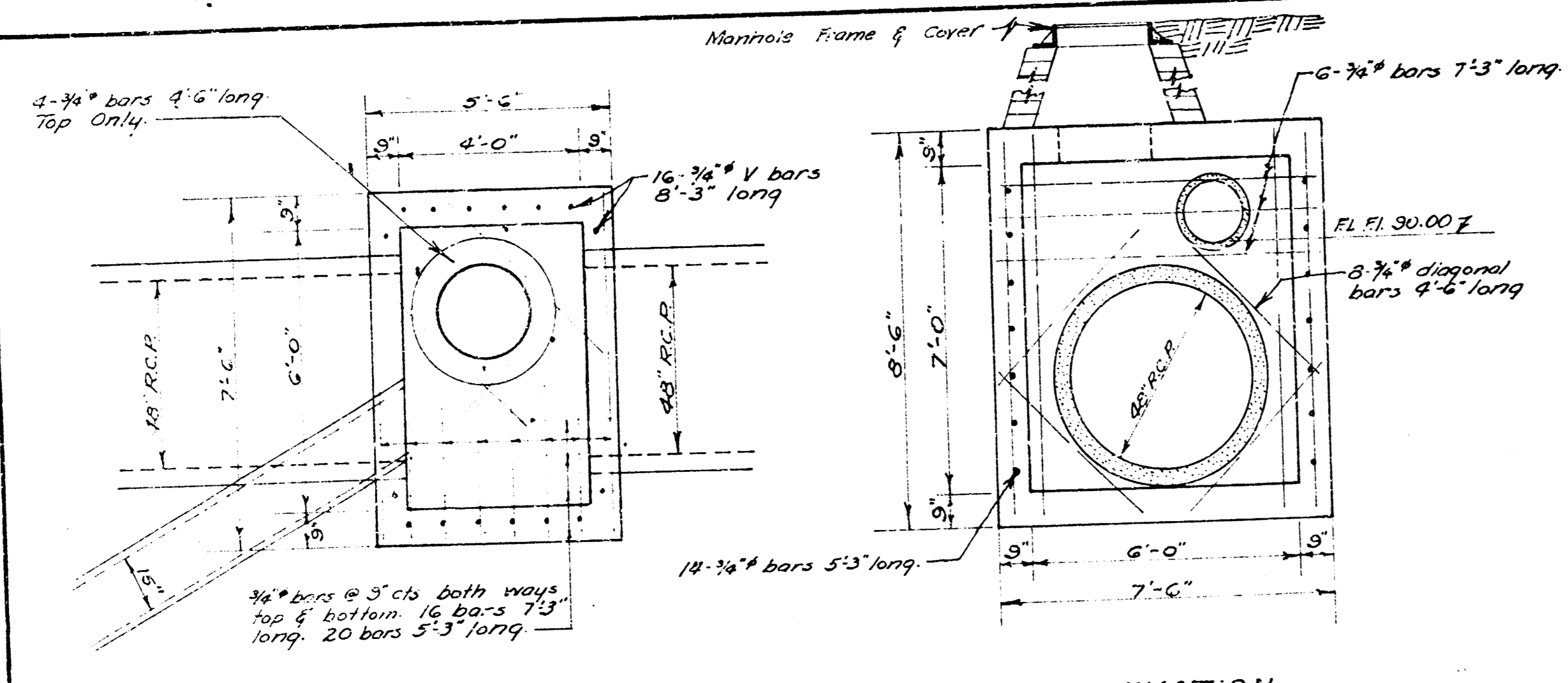


Scale: 1" = 40'

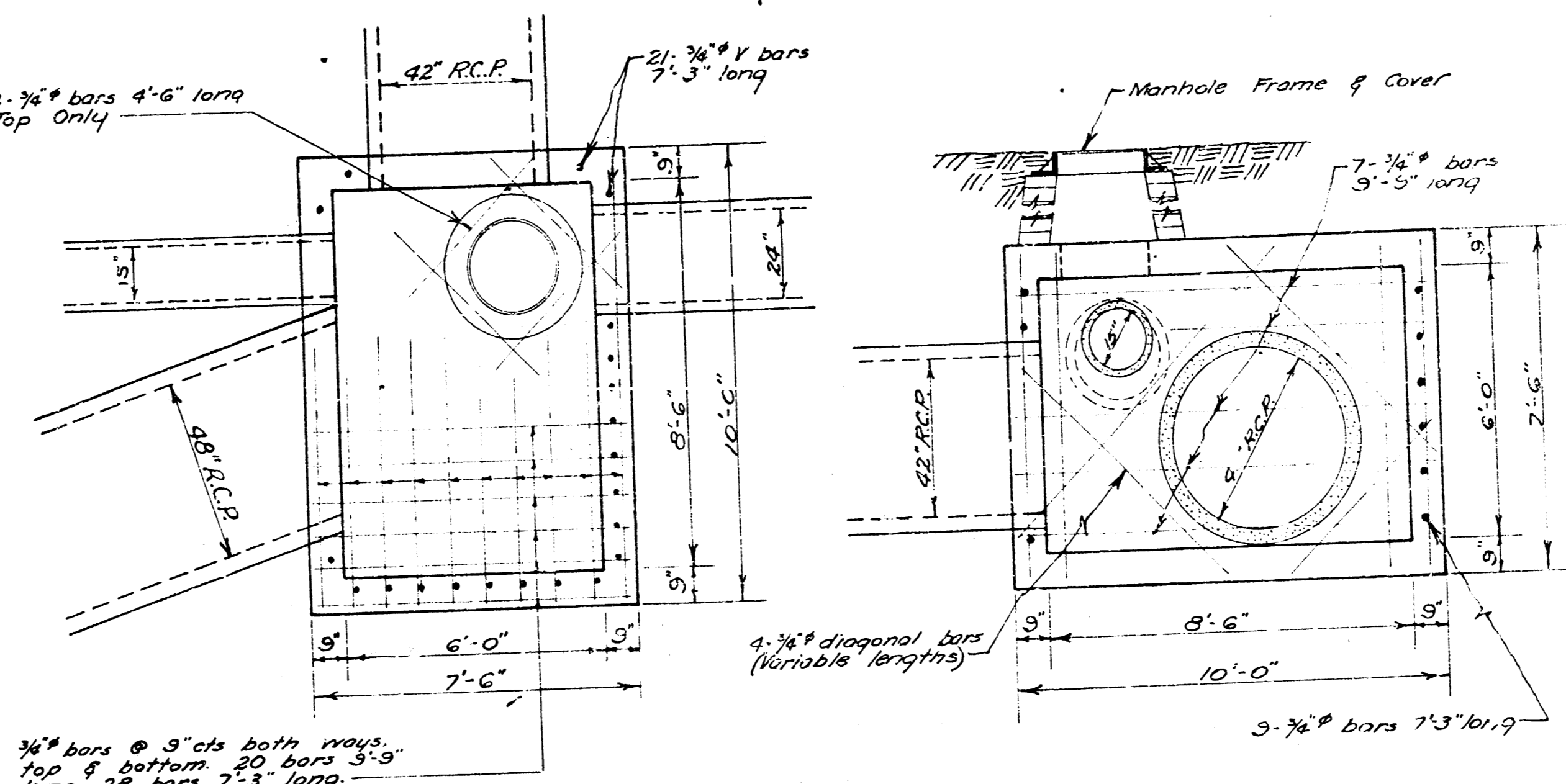
Profile Scale 1" = 40' Horiz.
1" = 8' Vert.

Date: Dec. 1932
 Drawn by: J.L.A.
 Checked by: Note Book No. 11-6

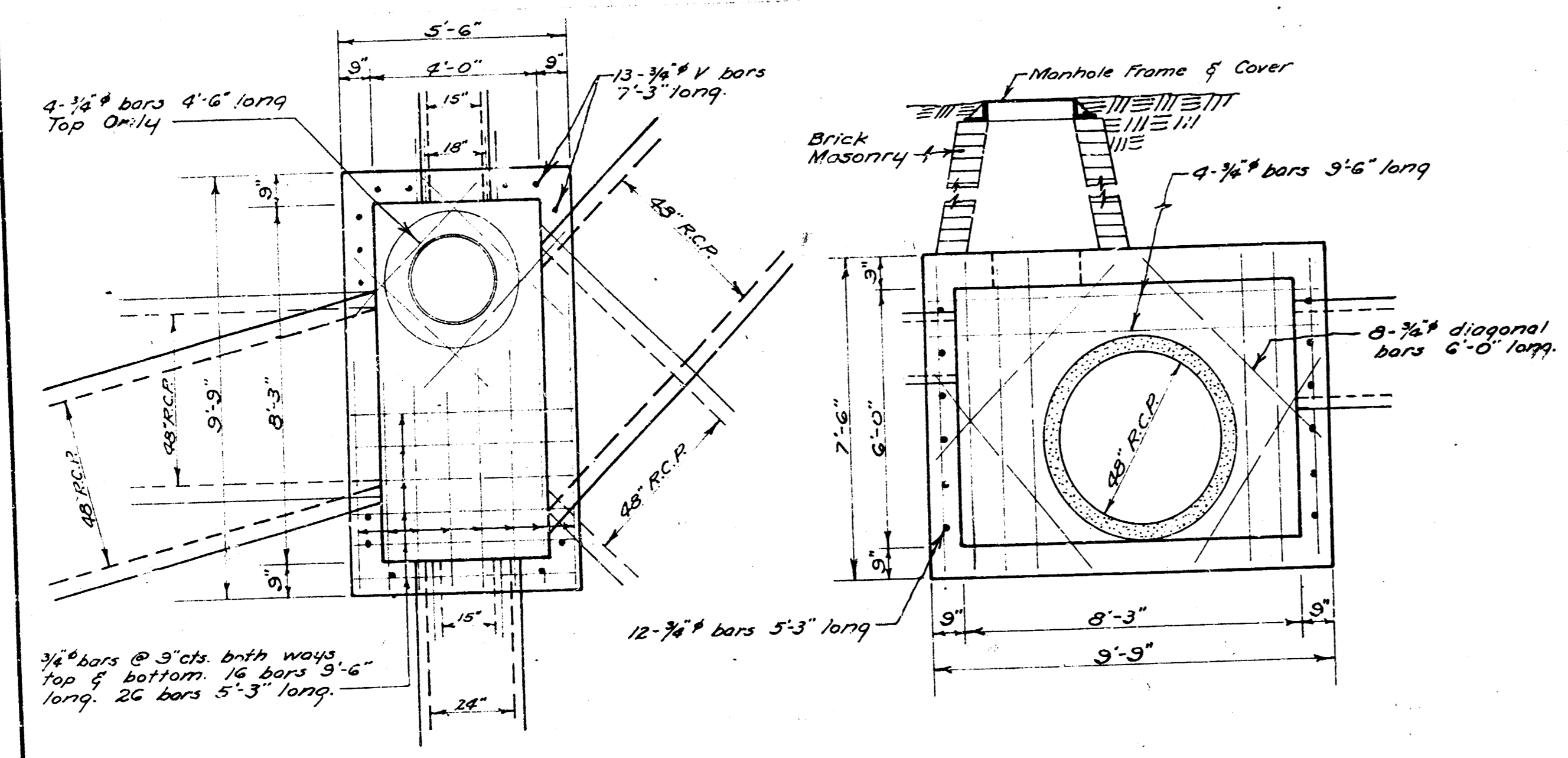
STORM WATER SEWER DIST. NO. 52
 CITY OF WICHITA KANSAS
 L.K. WHITE CITY ENGINEER
 Proj. No. C 22-97



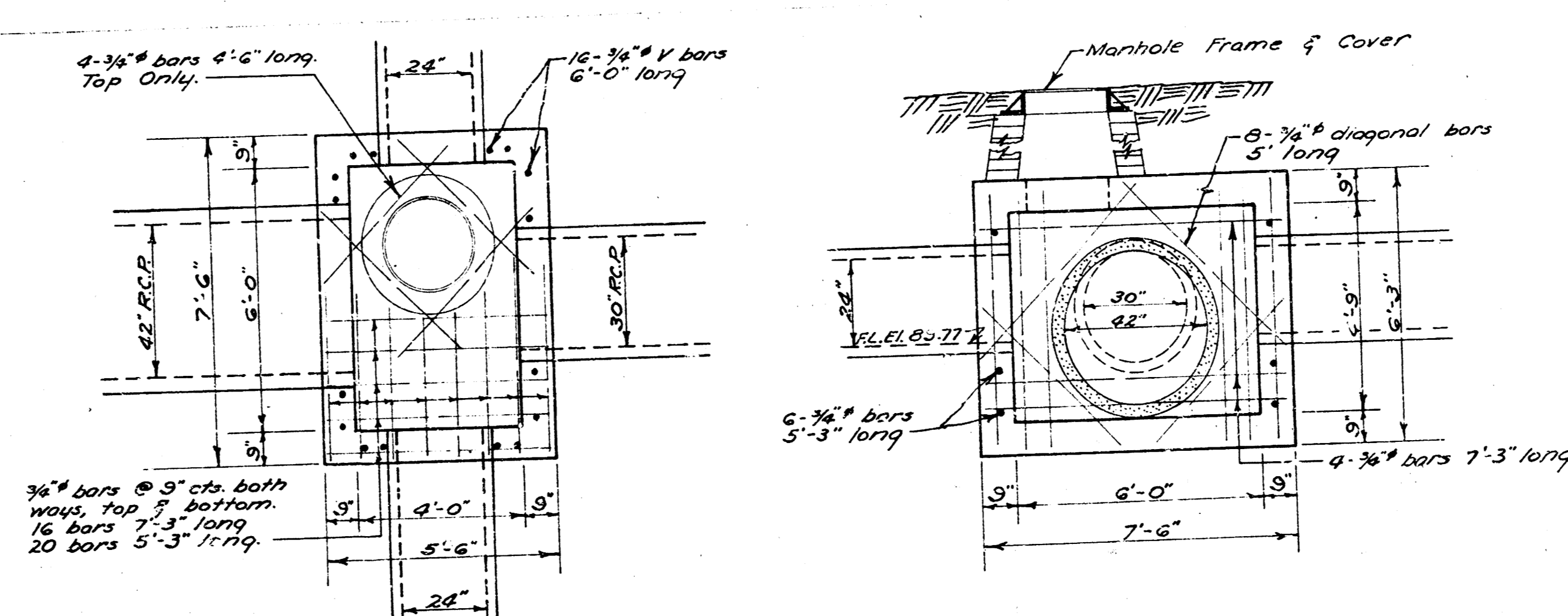
PLAN VIEW
ELEVATION
REINF. CONC. MANHOLE STA. 4+42
Scale 3/8" = 1'-0"



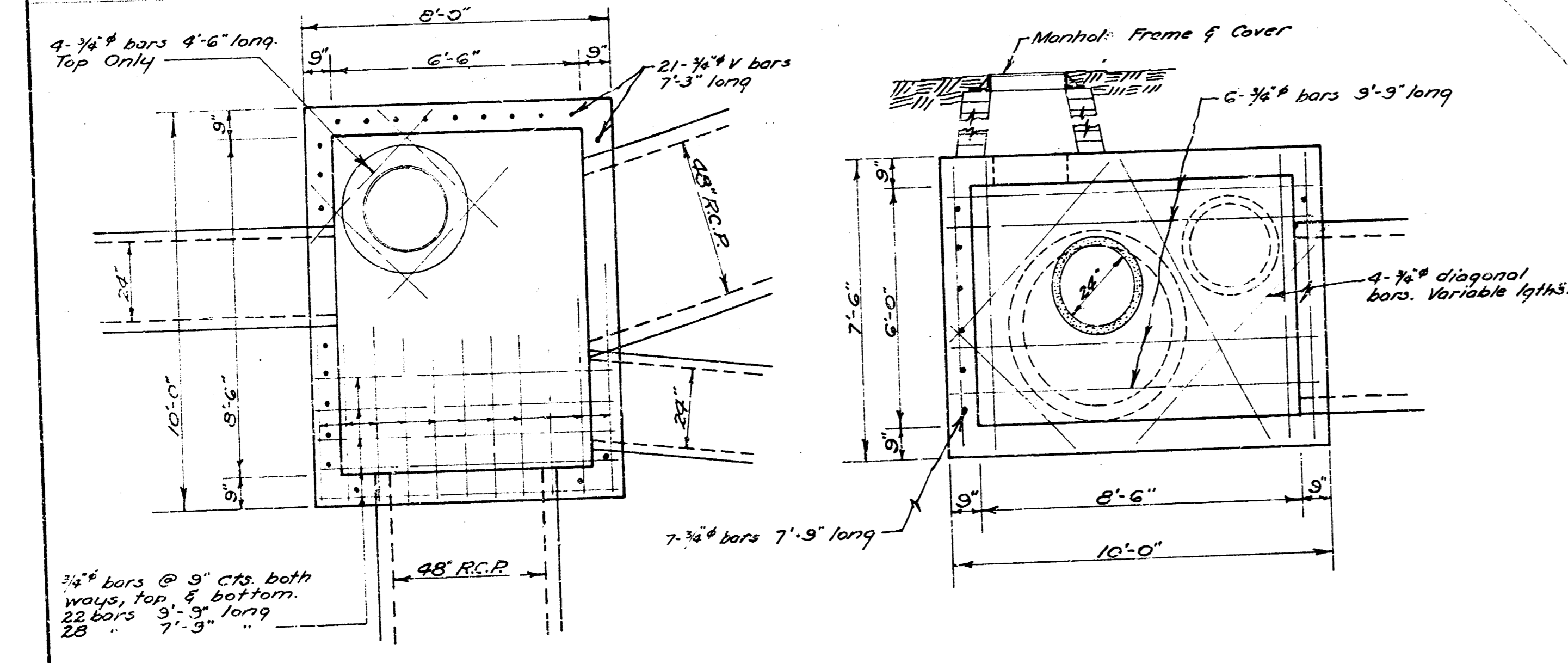
PLAN VIEW
ELEVATION
REINF. CONC. MANHOLE STA. 13+84.9
Scale 3/8" = 1'-0"



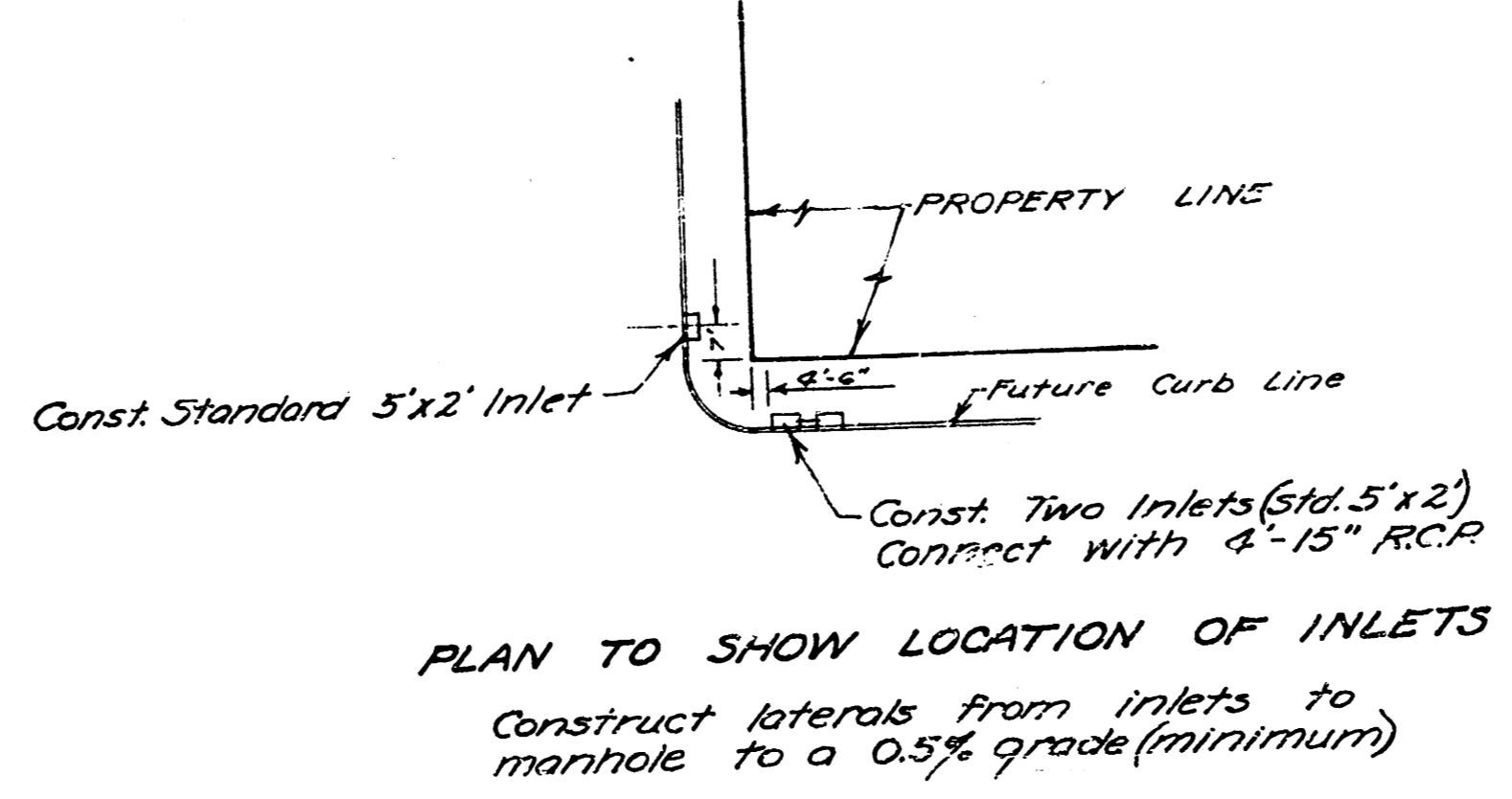
PLAN VIEW
ELEVATION
REINF. CONC. MANHOLE STA. 8+39 & STA. 8+80.7
Scale 3/8" = 1'-0"



PLAN VIEW
ELEVATION
REINF. CONC. MANHOLE STA. 19+67.8
Scale 3/8" = 1'-0"



PLAN VIEW
ELEVATION
REINF. CONC. MANHOLE STA. 0+00 Line 2
" 12+33.2 " 1
Scale 3/8" = 1'-0"



PLAN TO SHOW LOCATION OF INLETS
Construct laterals from inlets to manhole to a 0.5% grade (minimum)

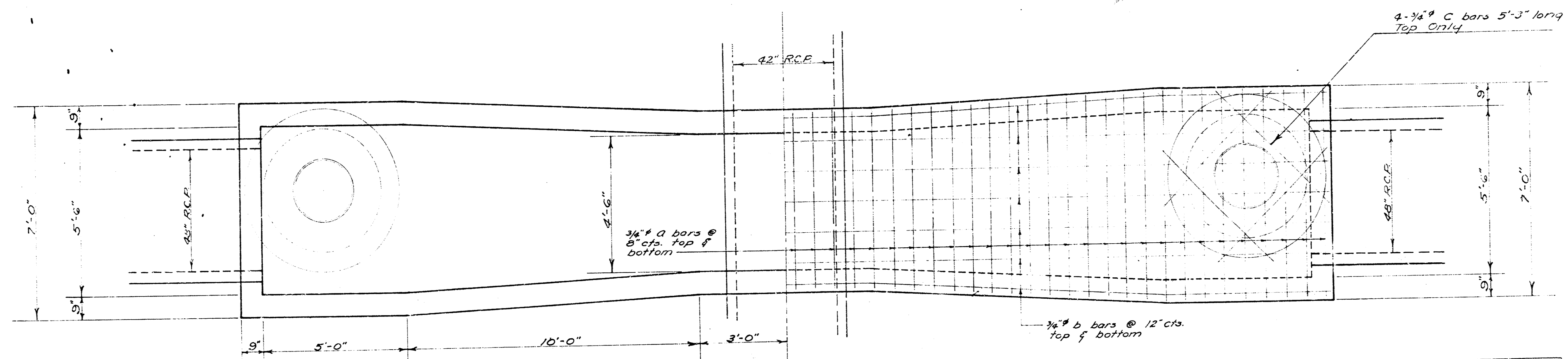
Concrete for structures shall contain not less than 155 lbs. of cement per cu. yd. of conc. In no event shall the total water content exceed 6.25 gals. per sack of cement. The mixture of fine and coarse aggregate shall be such as will produce a maximum density of a most workable mixture.

IN GENERAL - Pipes will enter and leave the manholes at various angles and elevs. Where possible bend reinforcing bars around pipes (8 diam. or less). Where pipes are large use diagonal bars as shown.

The floor of the manhole is to be shaped for flow and drainage. No deduction in conc. quantities shall be made for pipe openings. No addition in conc. quantities shall be made for shaping manhole floor.

An internal vibrator shall be used for placing concrete.

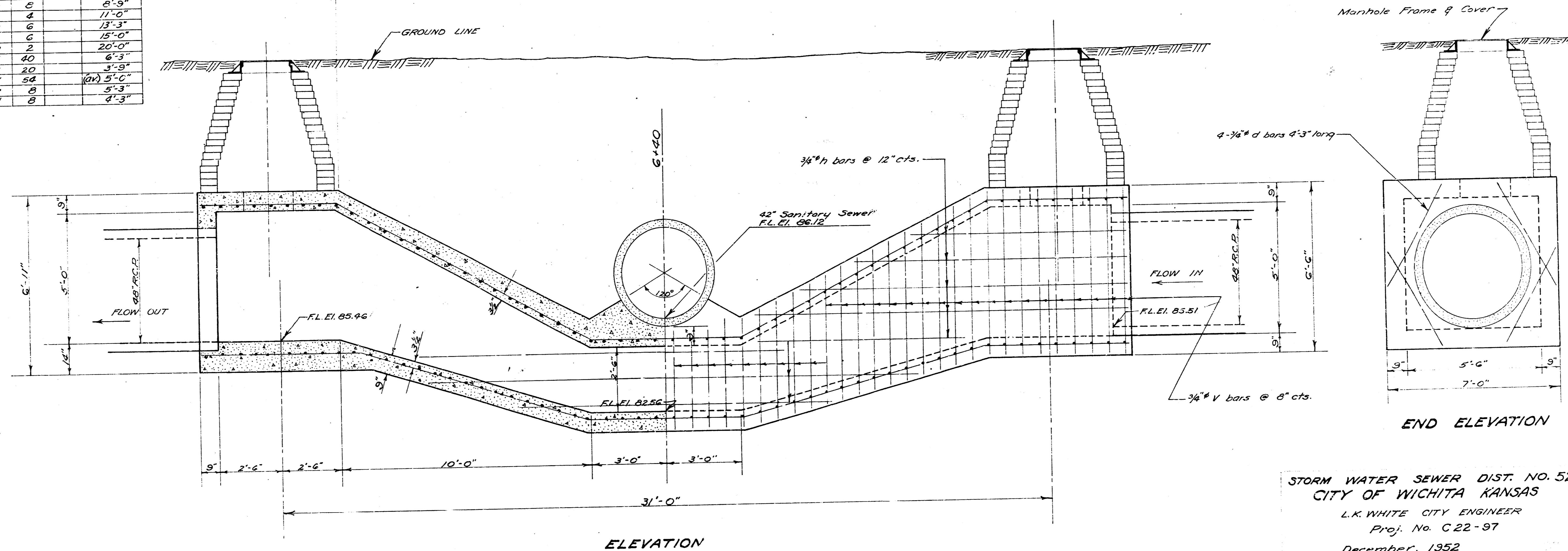
STORM WATER SEWER DIST. NO. 52
CITY OF WICHITA KANSAS
L.K. WHITE CITY ENGINEER
Proj. No. C 22-97
December 1952



PLAN VIEW

Bar	No.	Size	Length
a	40	3/4"	6'-0"
a	20	3/4"	5'-3"
a	34	(1) 6'-3"	
b	7	3/4"	36'-3"
b	7	3/4"	36'-3"
h	6	3/4"	8'-9"
h	4	3/4"	11'-0"
h	6	3/4"	13'-3"
h	6	3/4"	15'-0"
h	2	3/4"	20'-0"
v	40	3/4"	6'-3"
v	20	3/4"	5'-9"
v	34	(1) 5'-0"	
c	8	3/4"	5'-3"
d	8	3/4"	4'-3"

BILL OF MATERIAL		
Item	No.	Units
Excavation	165	cu. yds.
Concrete	25	cu. yds.
Rein. Steel	3362	lbs.
Brick Manholes	2	each



ELEVATION

END ELEVATION

REINF. CONCRETE INVERTED SIPHON

Scale 1/2" = 1'-0"

STORM WATER SEWER DIST. NO. 52
 CITY OF WICHITA KANSAS
 L.K. WHITE CITY ENGINEER
 Proj. No. C22-97
 December, 1952