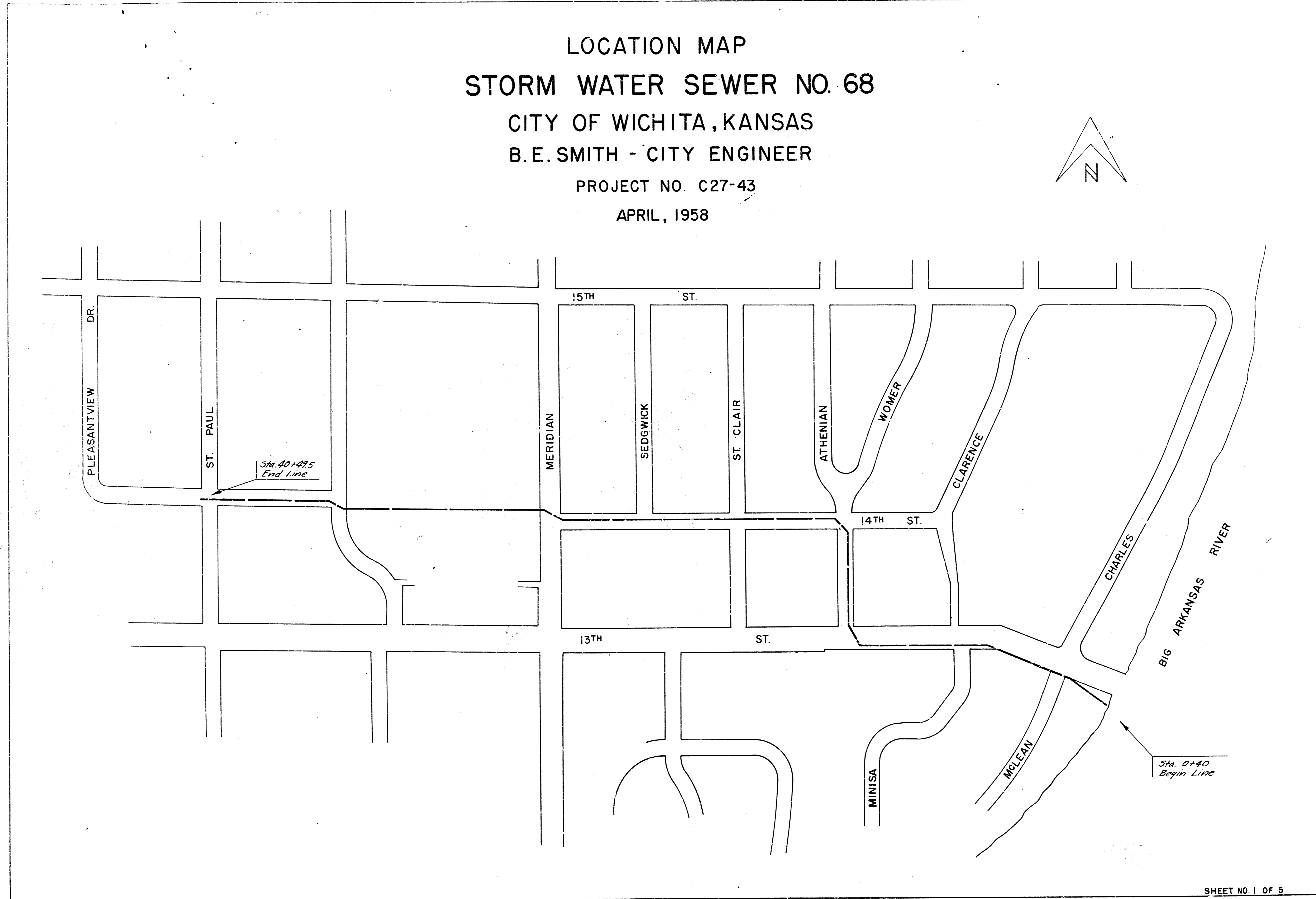
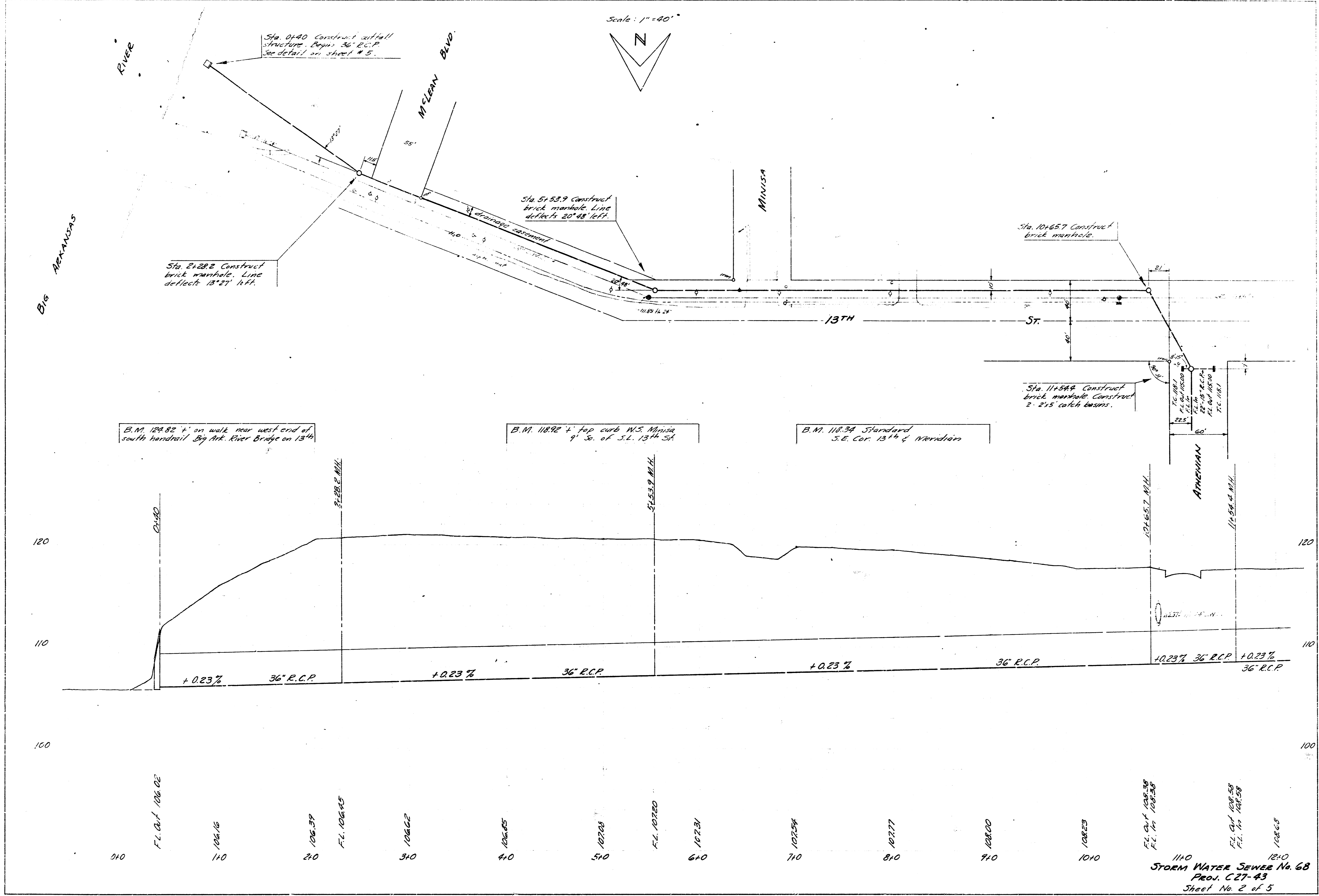


LOCATION MAP
STORM WATER SEWER NO. 68
CITY OF WICHITA, KANSAS
B.E. SMITH - CITY ENGINEER
PROJECT NO. C27-43
APRIL, 1958

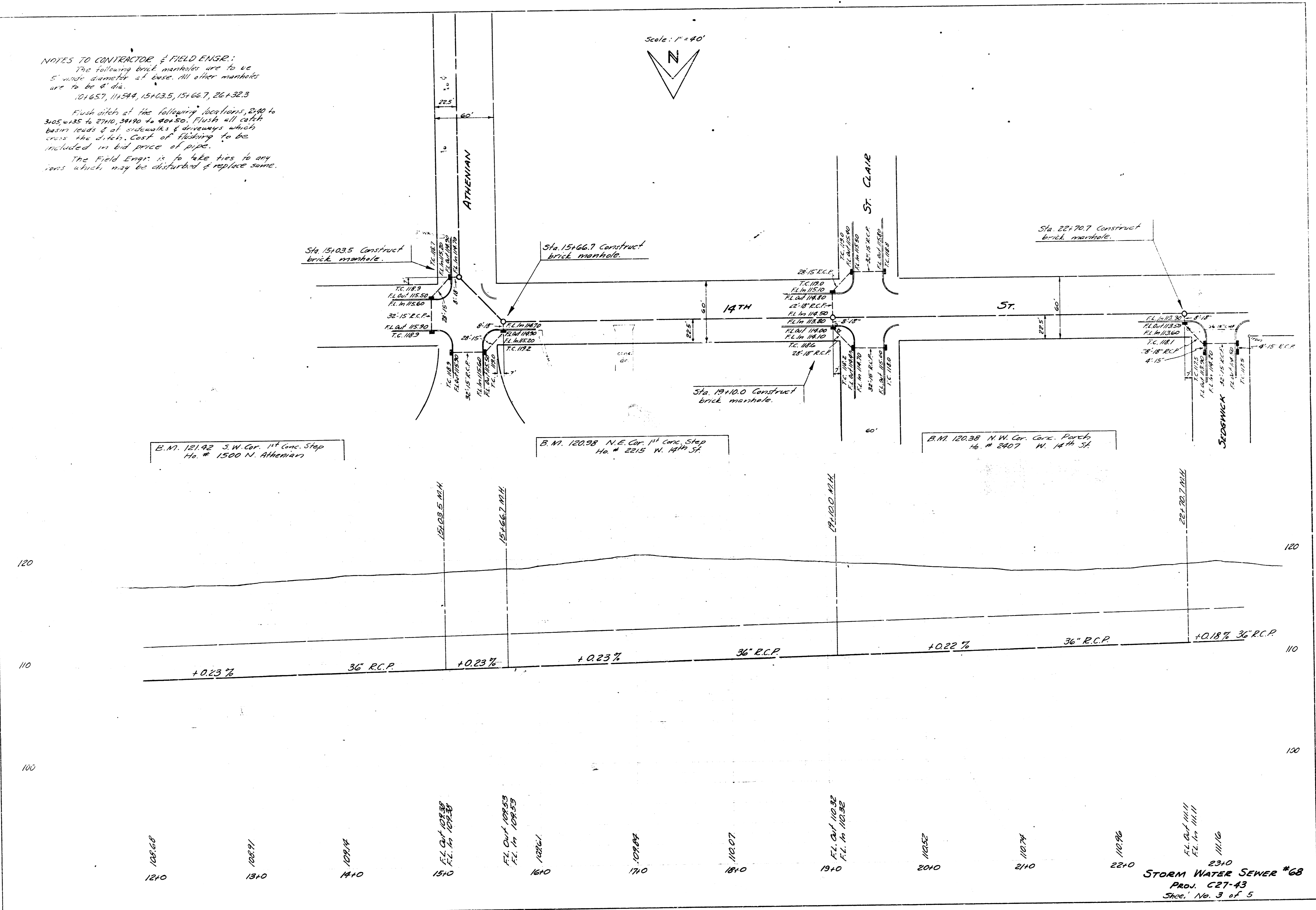




STORM WATER SEWER No. 68
 PROJ. C27-43
 Sheet No. 2 of 5

NOTES TO CONTRACTOR & FIELD ENGR:
 The following brick manholes are to be 5' inside diameter if base. All other manholes are to be 4' dia.
 151657, 151544, 151635, 151667, 261323
 Flush ditch at the following locations, 2190 to 3105, 1335 to 2710, 3410 to 4050. Flush will catch basin leads & all sidewalks & driveways which cross the ditch. Cost of flushing to be included in bid price of pipe.
 The Field Engr. is to take ties to any lines which may be disturbed & replace same.

Scale: 1" = 40'

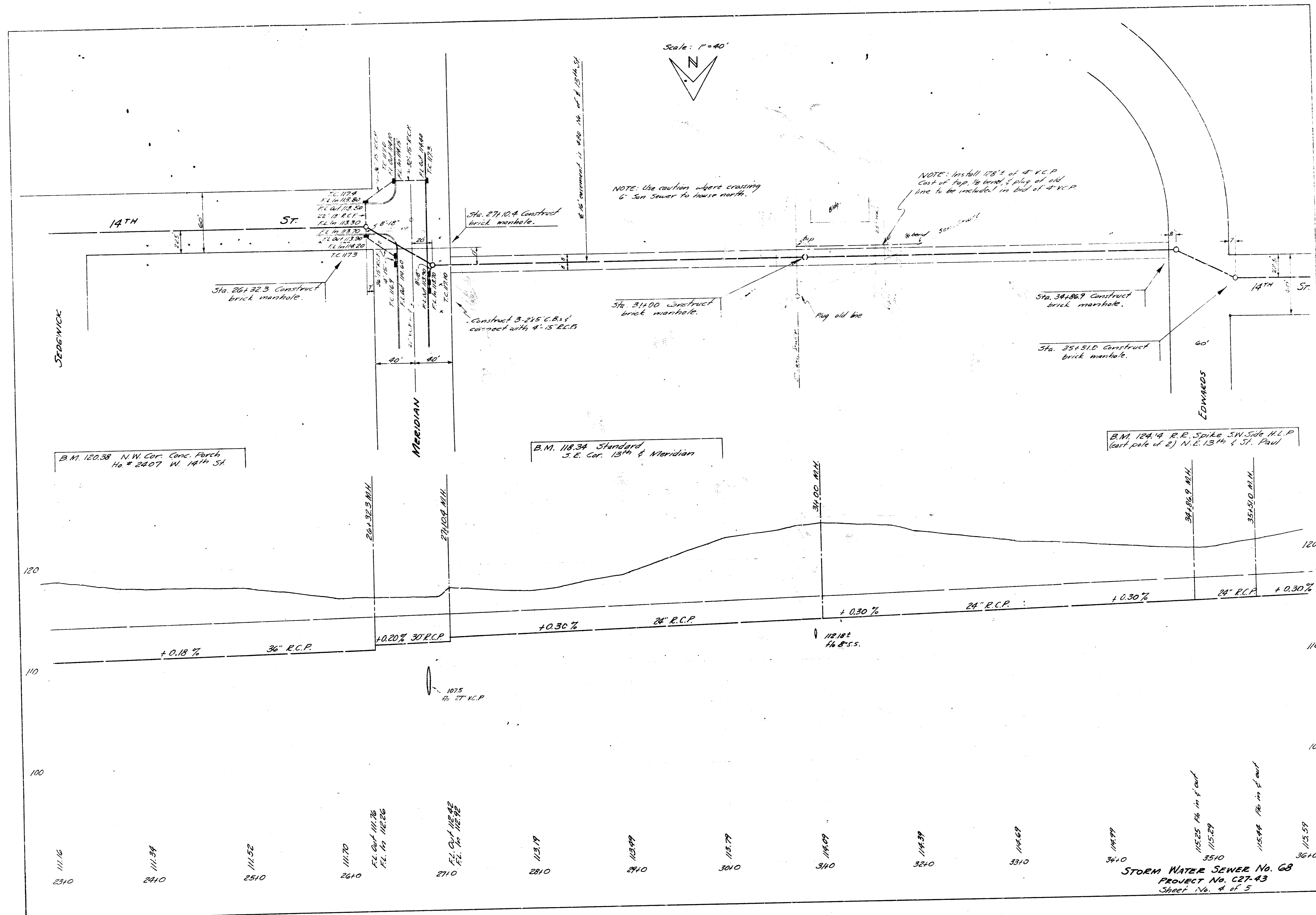


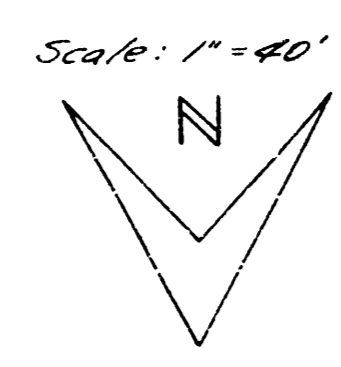
B.M. 121.92 S.W. Cor. 1st Conc. Step
 Ho. # 1500 N. Athenian

B.M. 120.98 N.E. Cor. 1st Conc. Step
 Ho. # 2215 W. 14th St.

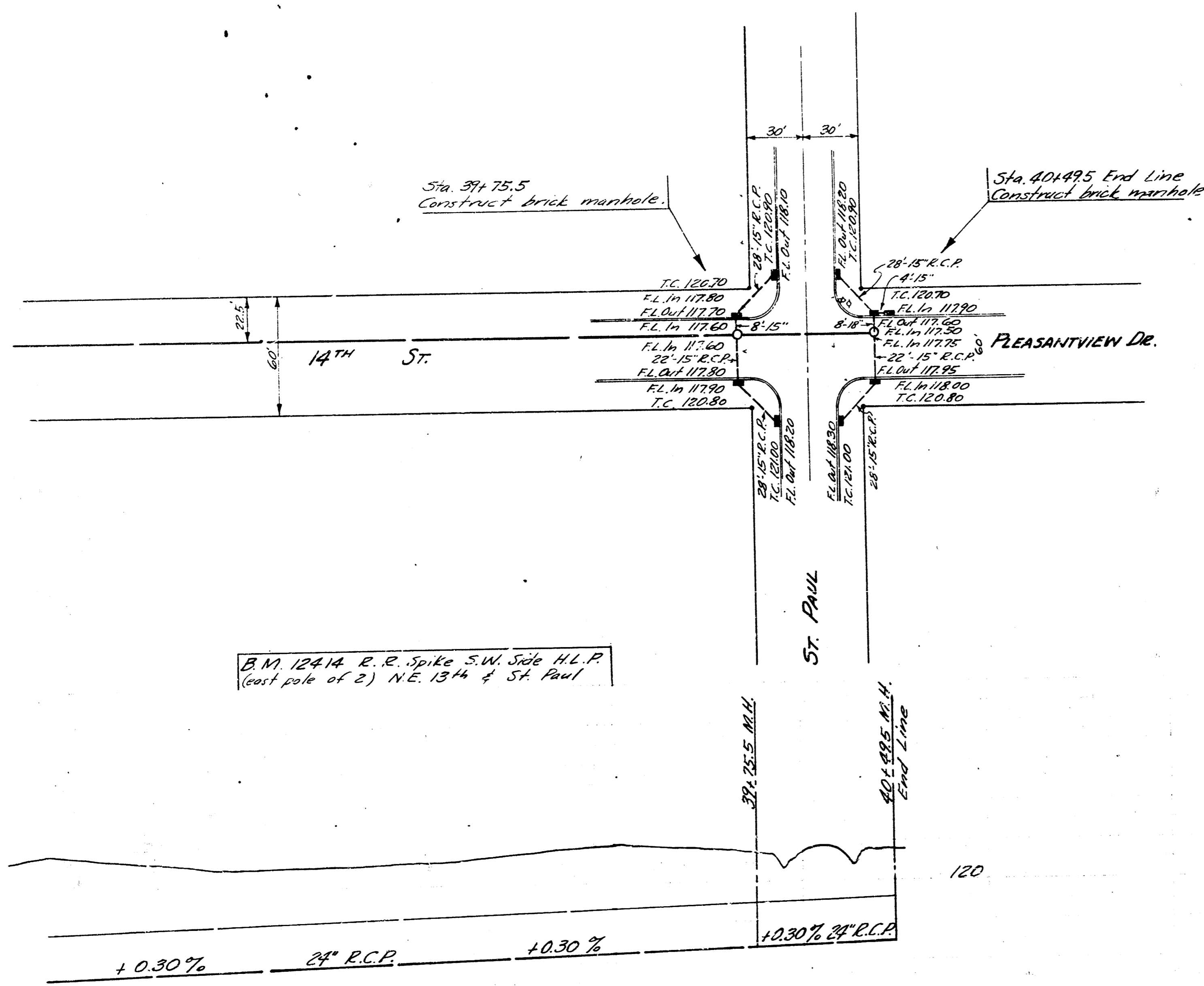
B.M. 120.38 N.W. Cor. Conc. Patch
 Ho. # 2407 N. 14th St.

STORM WATER SEWER #68
 PROJ. C27-43
 SHEET No. 3 of 5

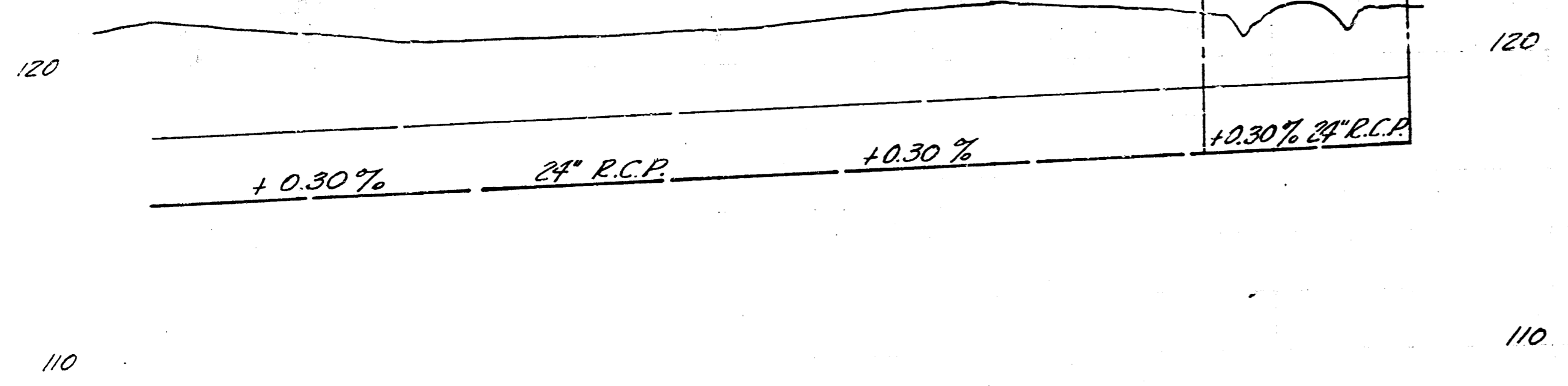




Scale: 1" = 40'



B.M. 12414 R.R. Spike S.W. Side H.L.P.
(cut pole of 2) N.E. 13th & St. Paul



115.59
36+0

115.59
37+0

116.19
38+0

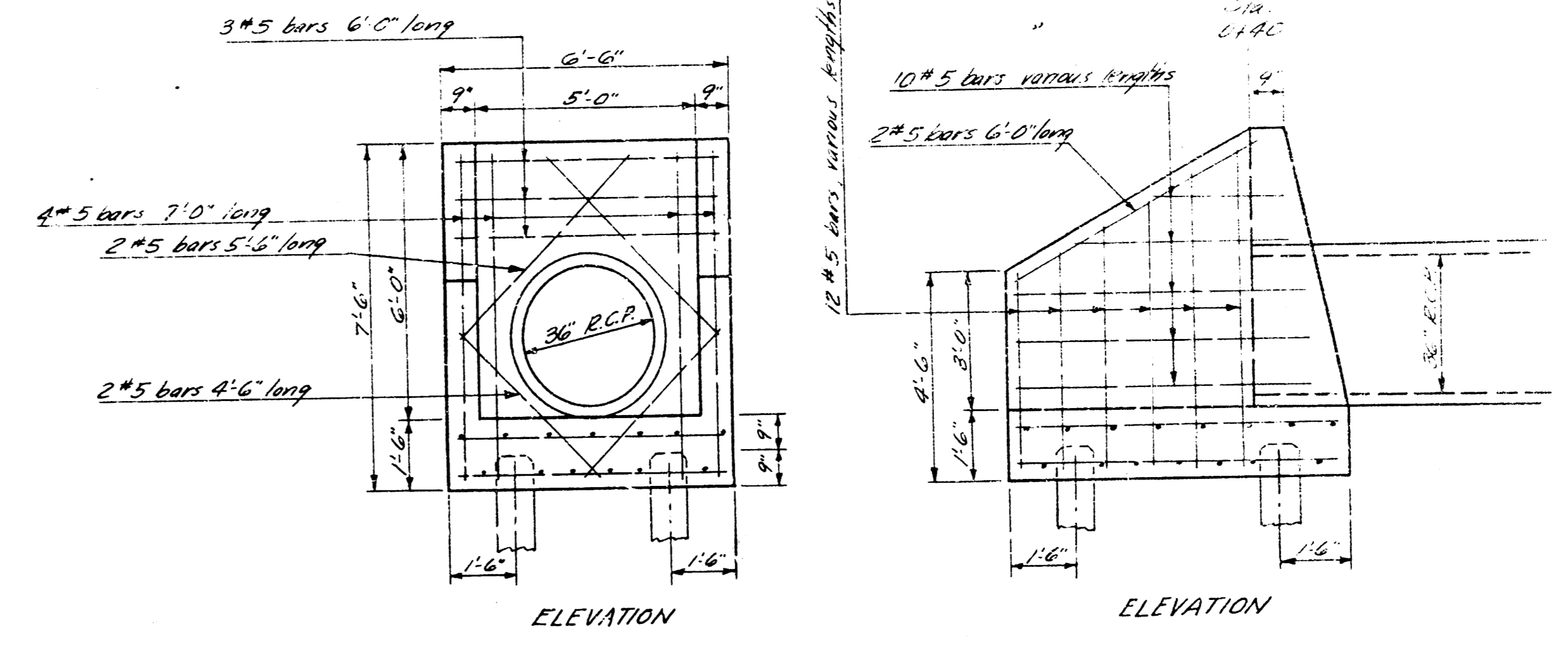
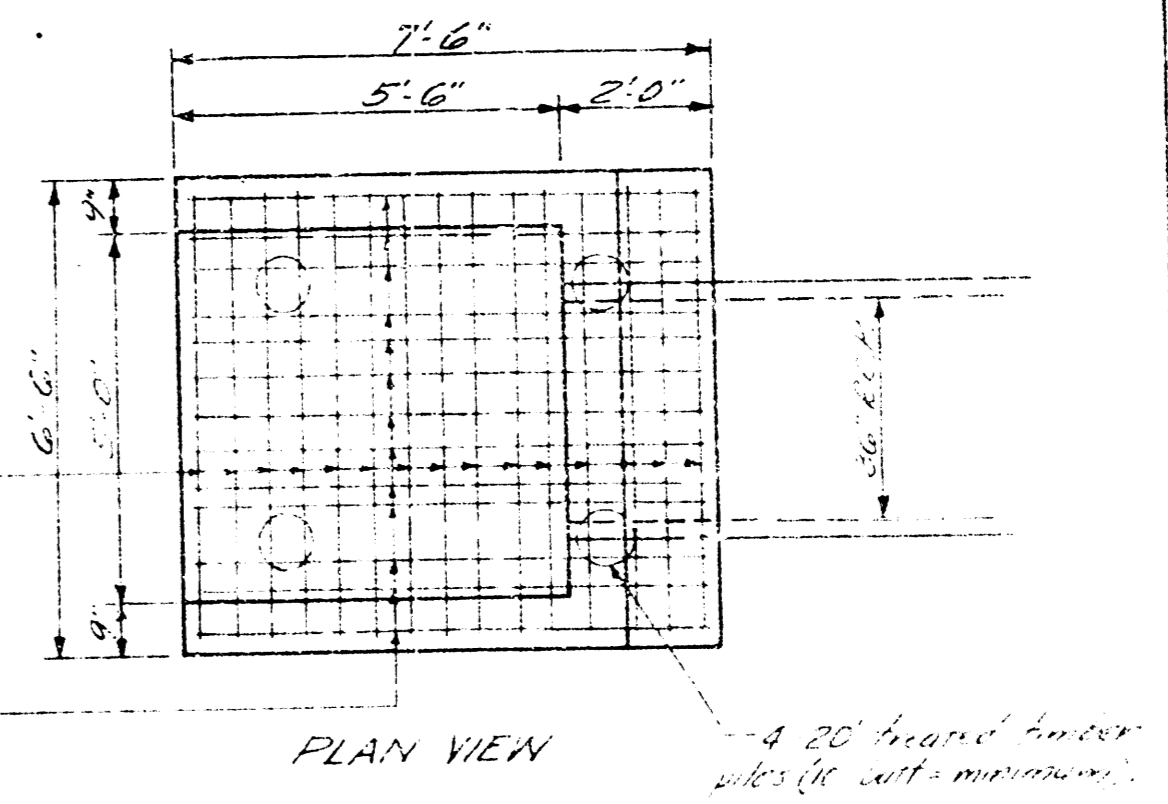
116.79
39+0

116.72 Pile in Cut
116.79
40+0

116.94 Pile in Cut

NOTE: Concrete for this structure shall contain not less than 165 barrels of cement per cu. yd. of concrete. In no event shall the total water content exceed 6.25 gals. per sack of cement. The mixture of fine and coarse aggregate shall be such as will produce a maximum density of a most workable mixture.

Bill of Materials:
6.07 cu. yds. concrete
398 lbs. steel



REINF. CONC. OUTFALL STRUCTURE - STA. 0+40
Scale: 3/8" = 1'-0"