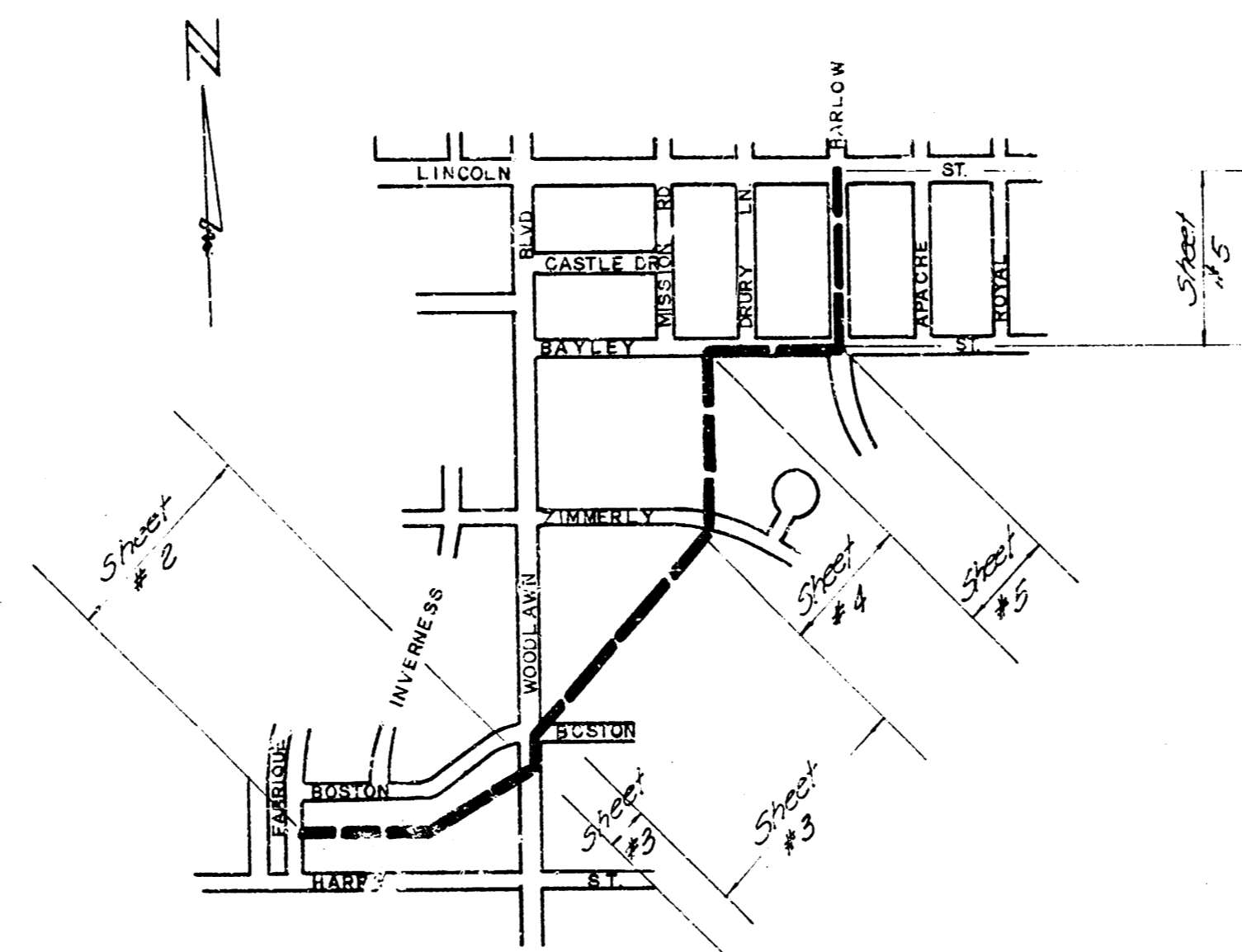


STORM WATER SEWER

NO.-79

PROJECT NO. C26-29

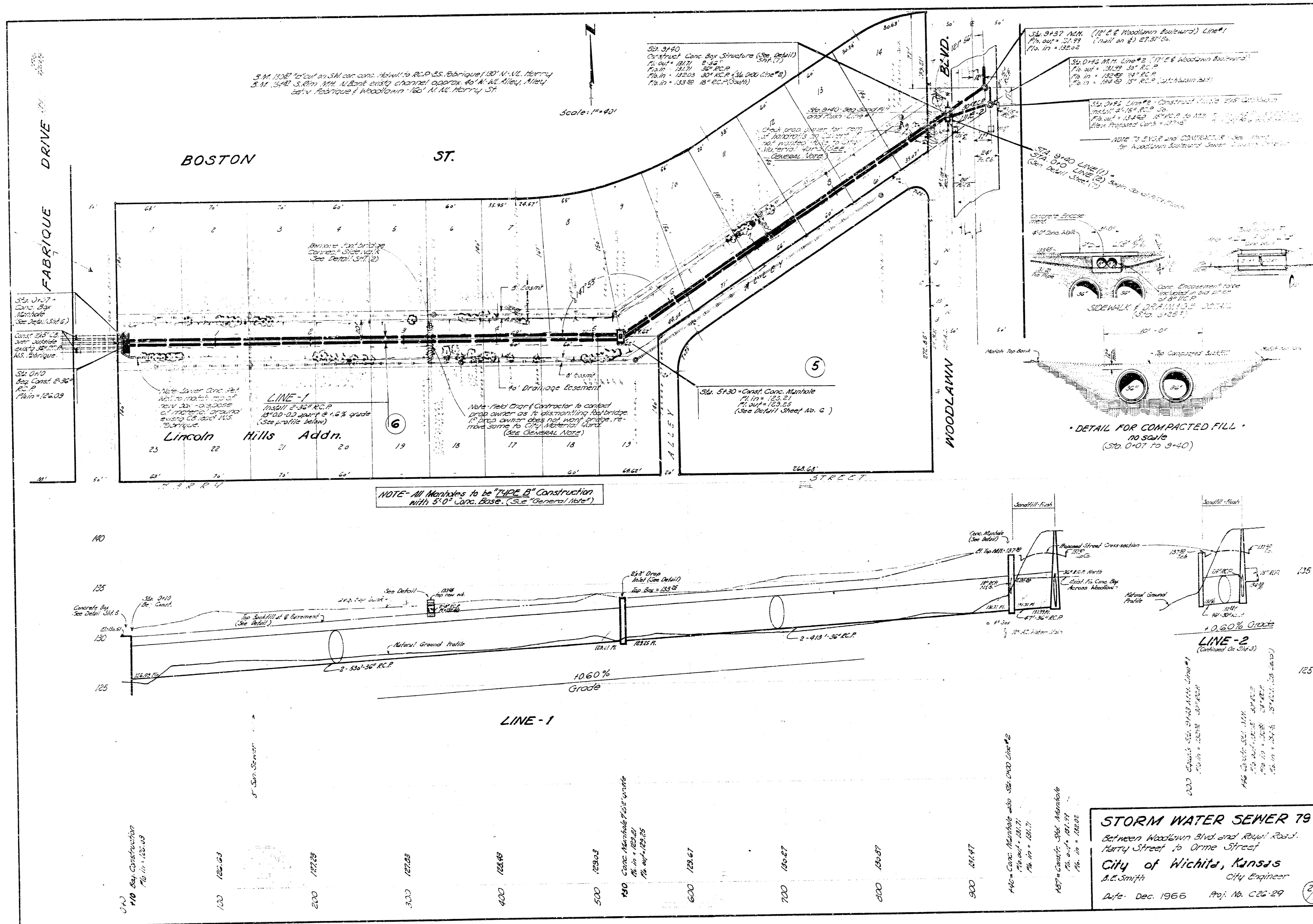


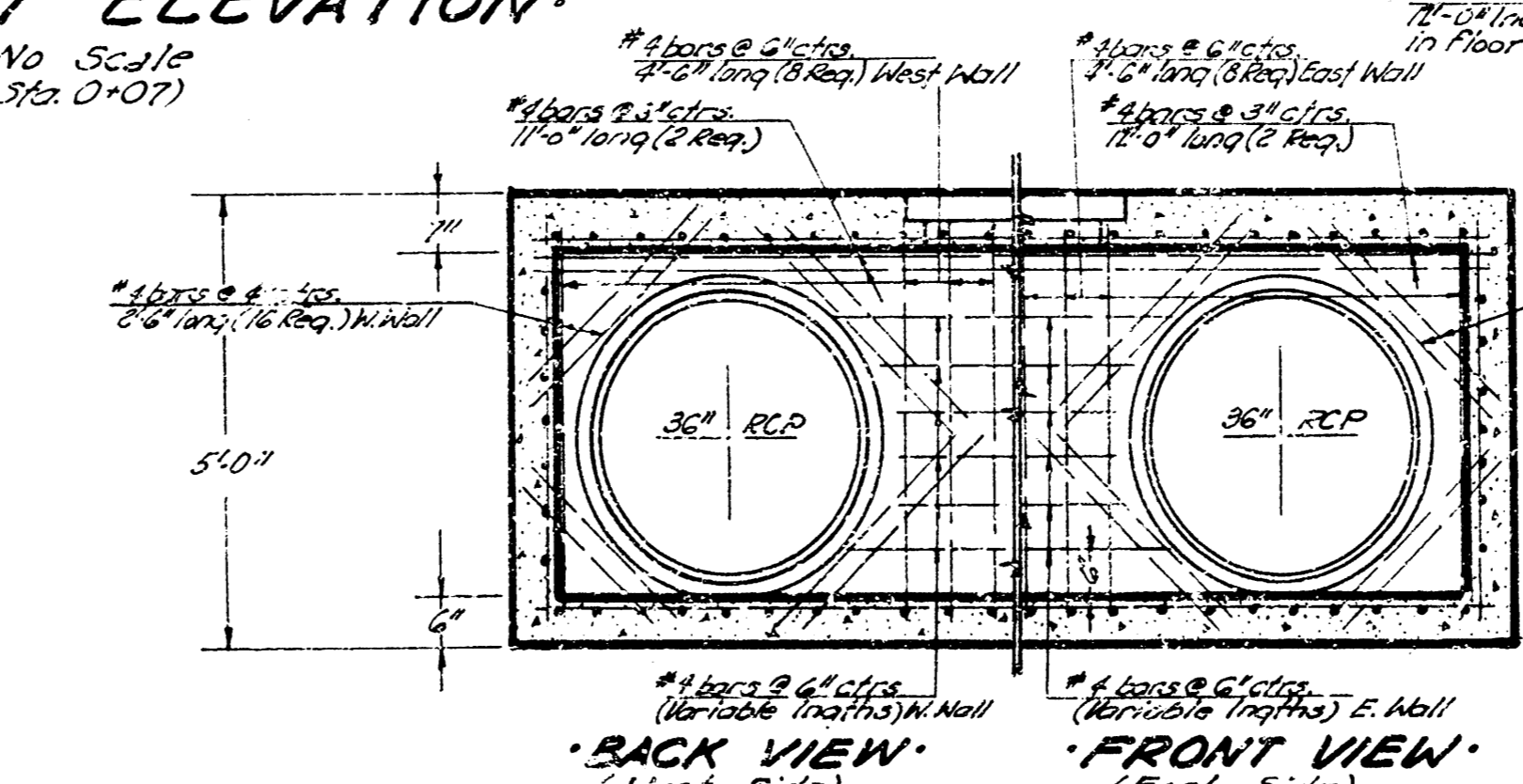
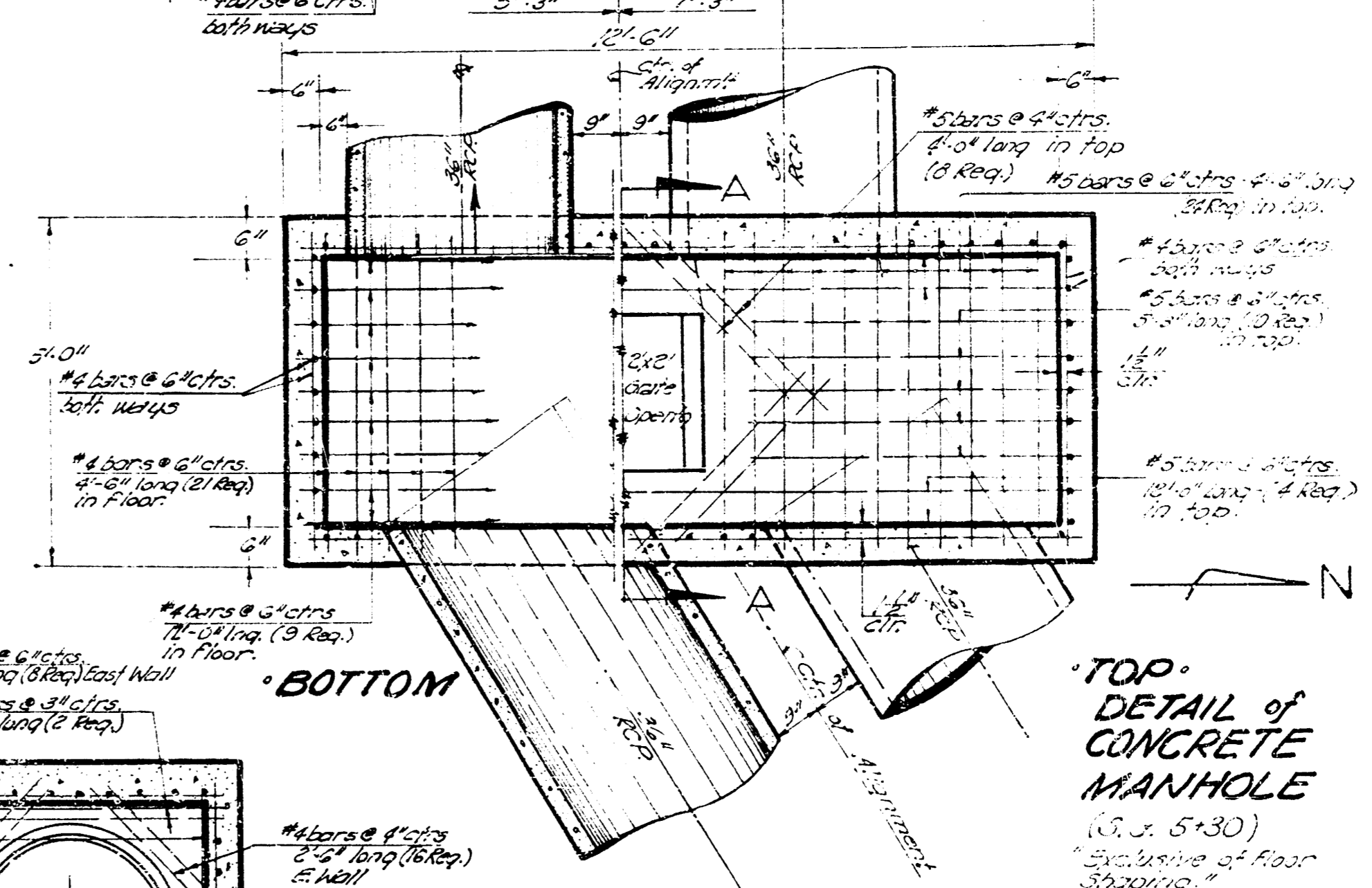
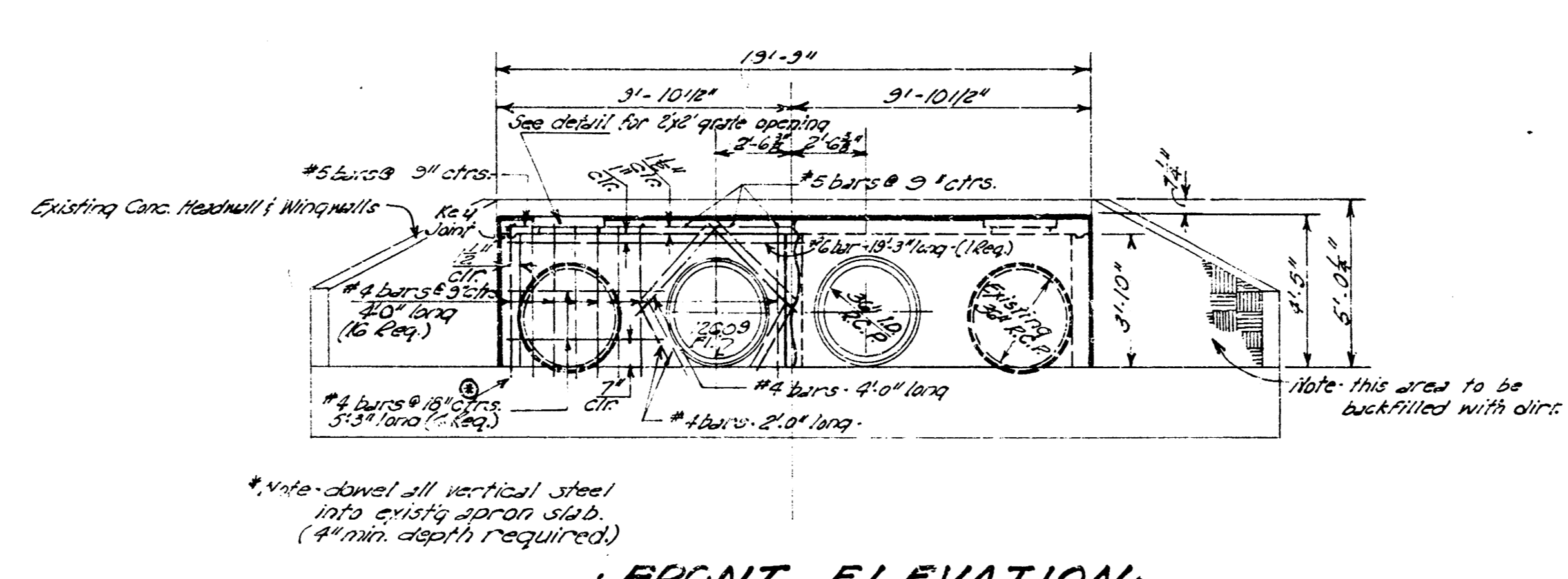
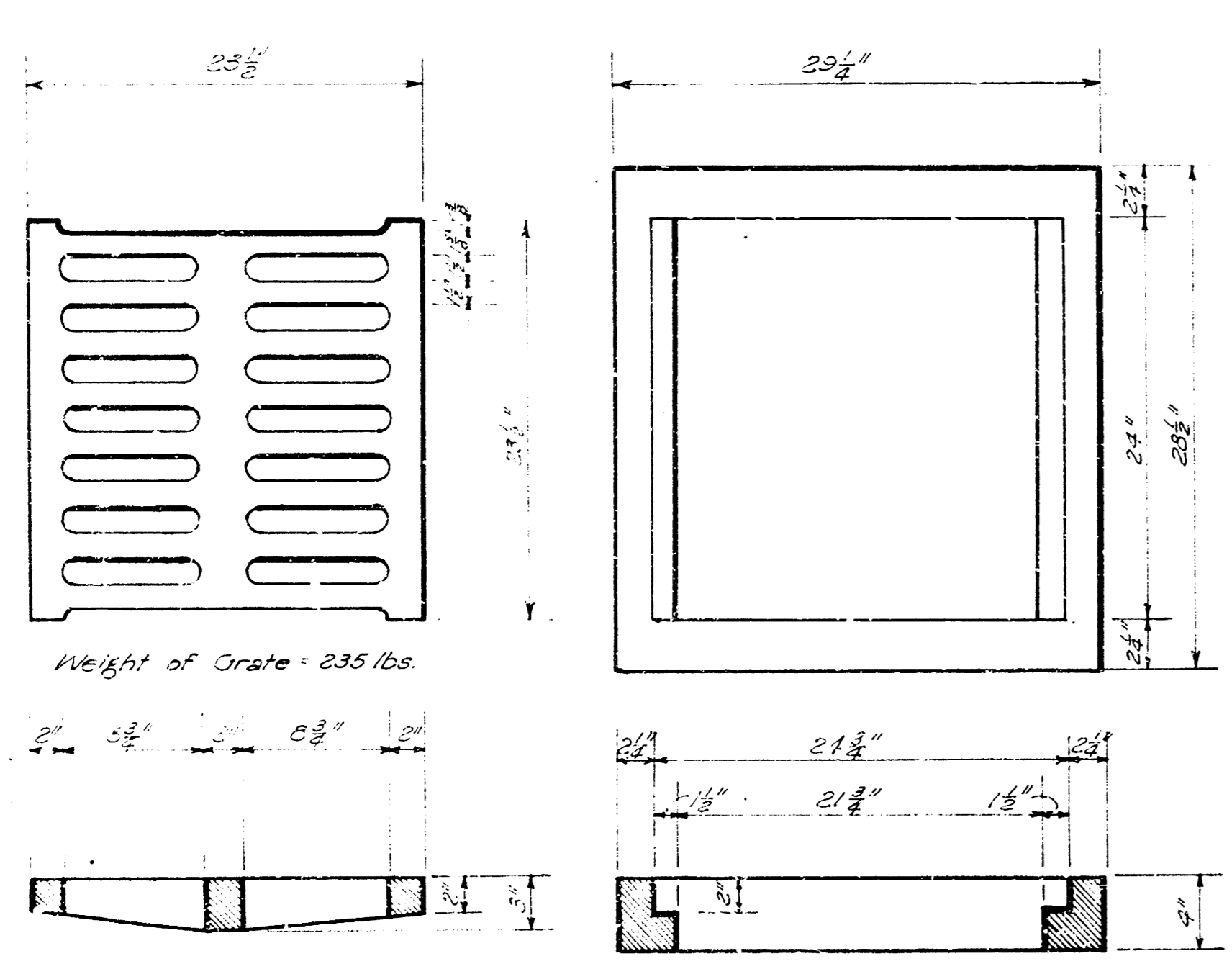
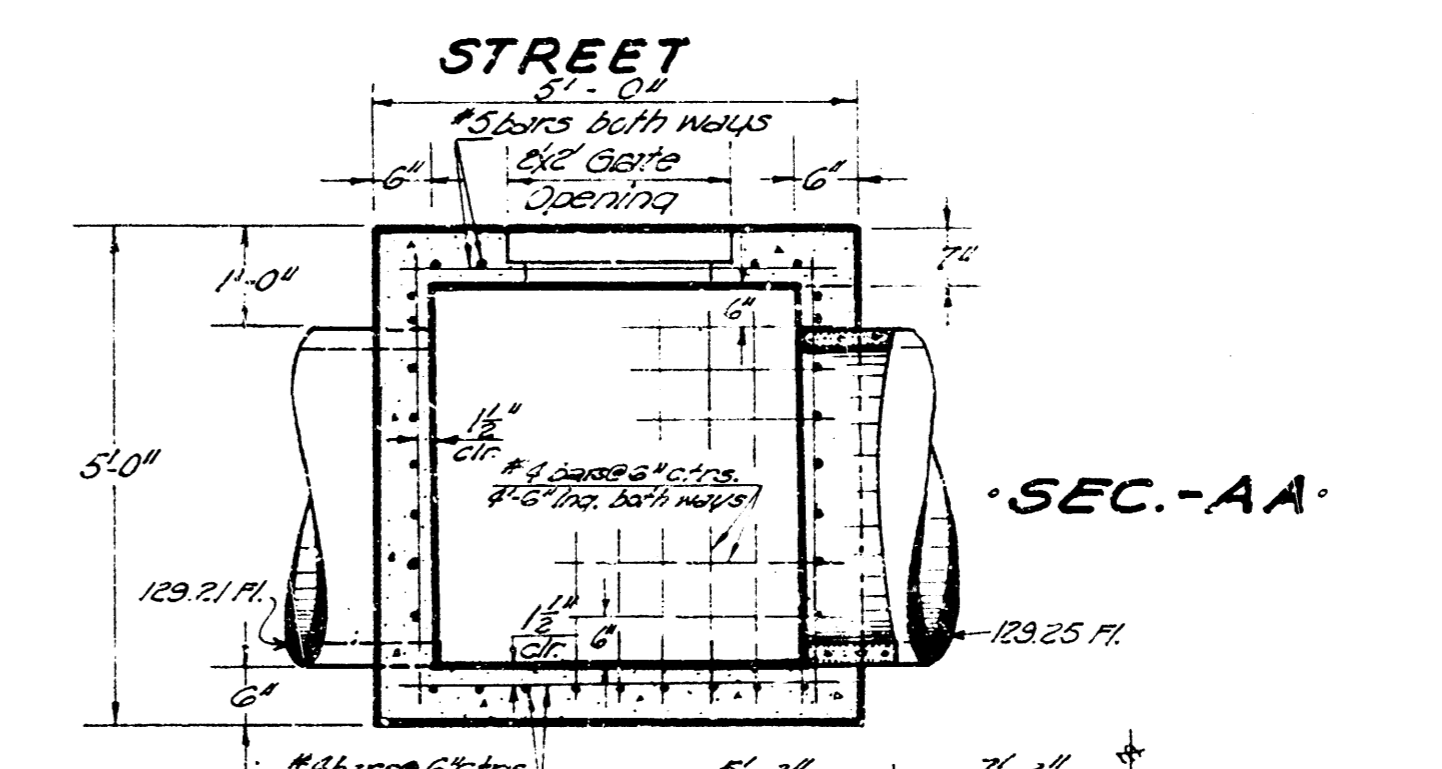
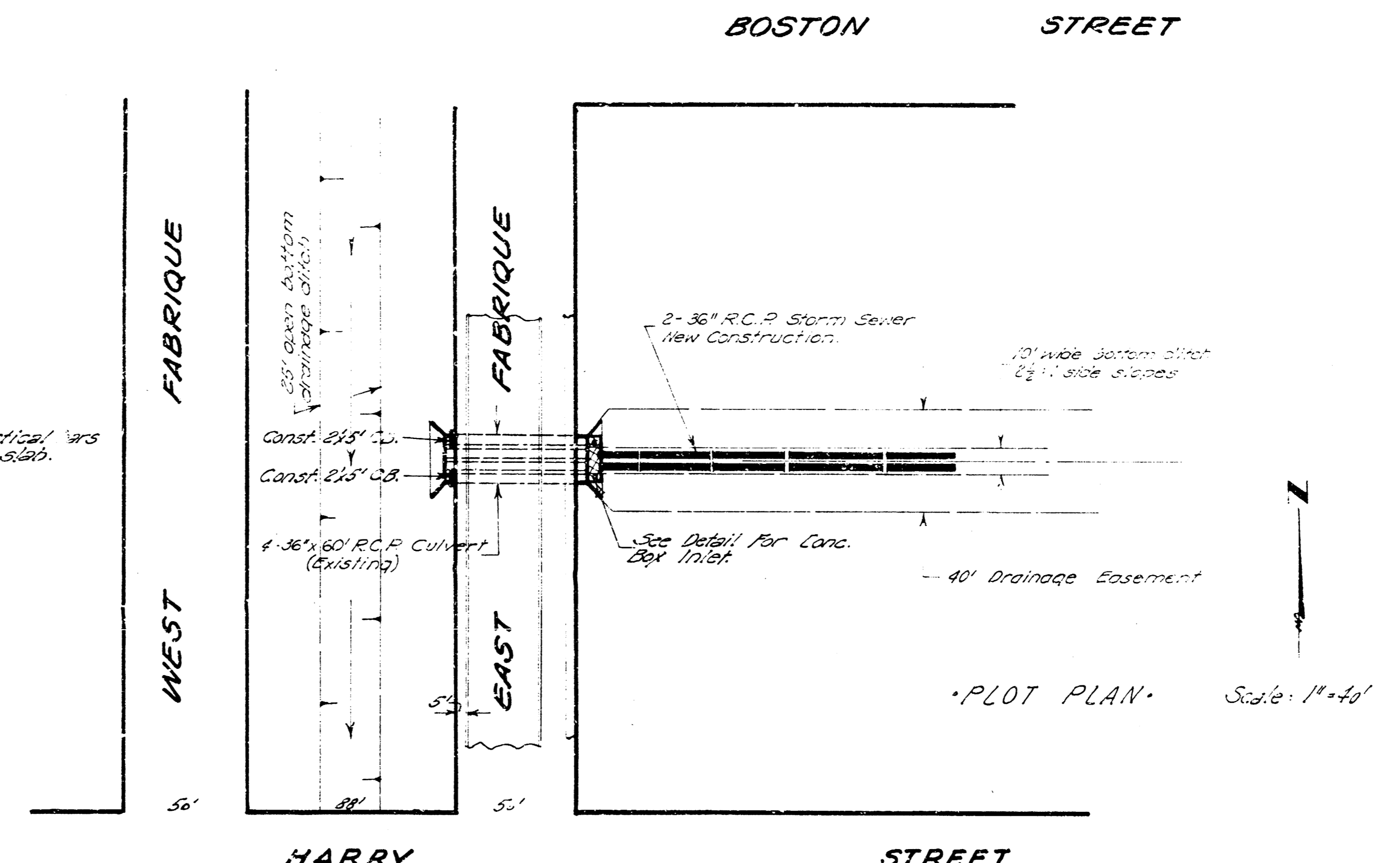
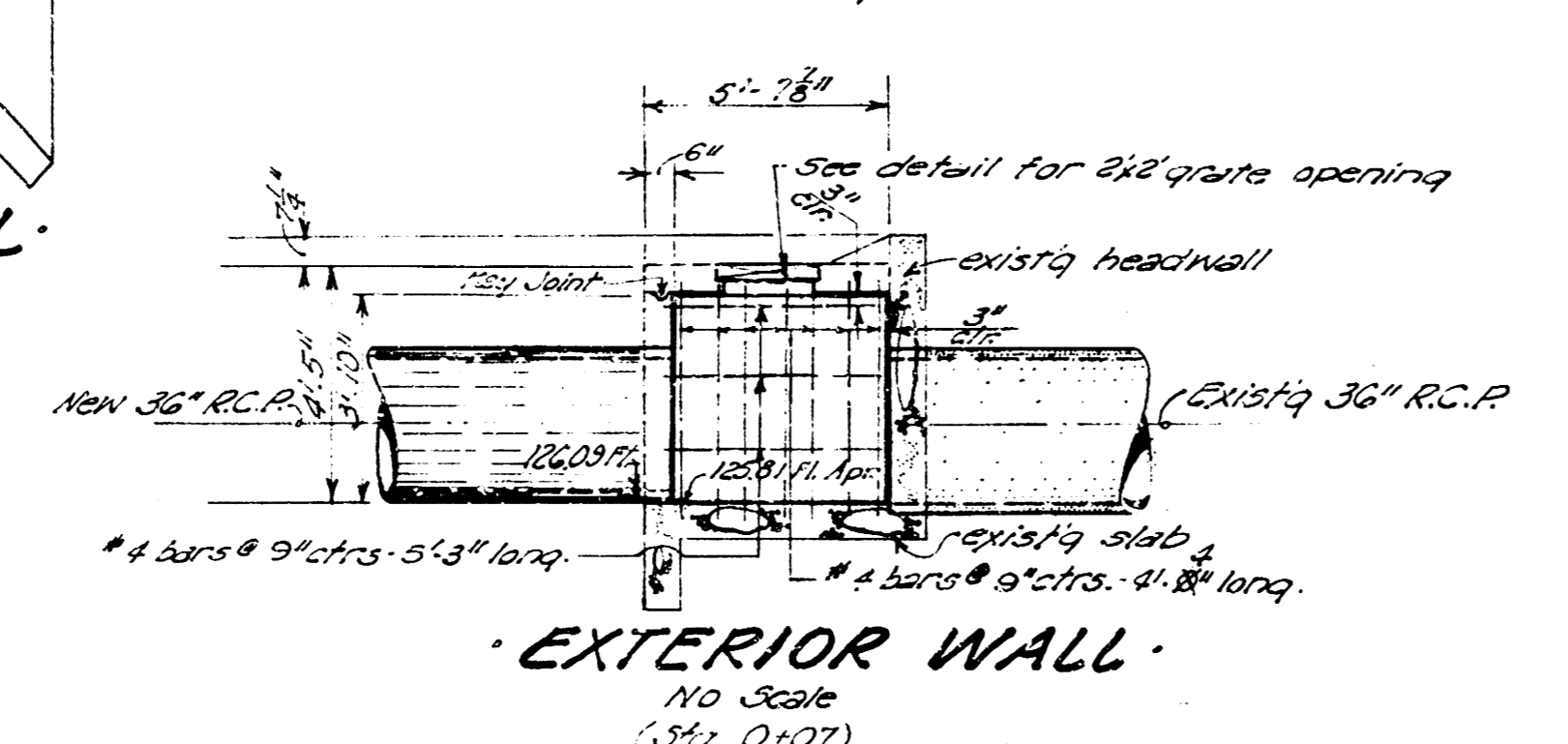
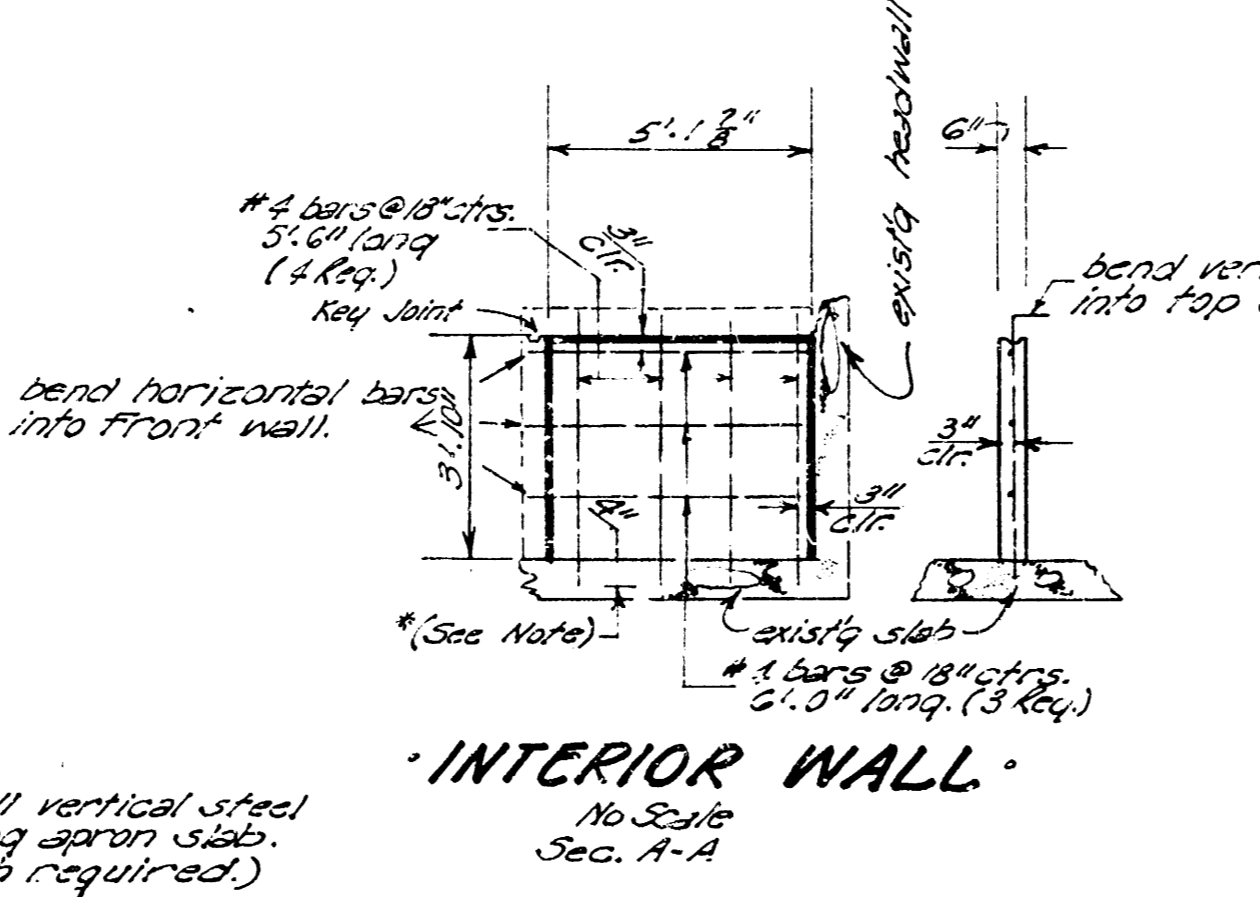
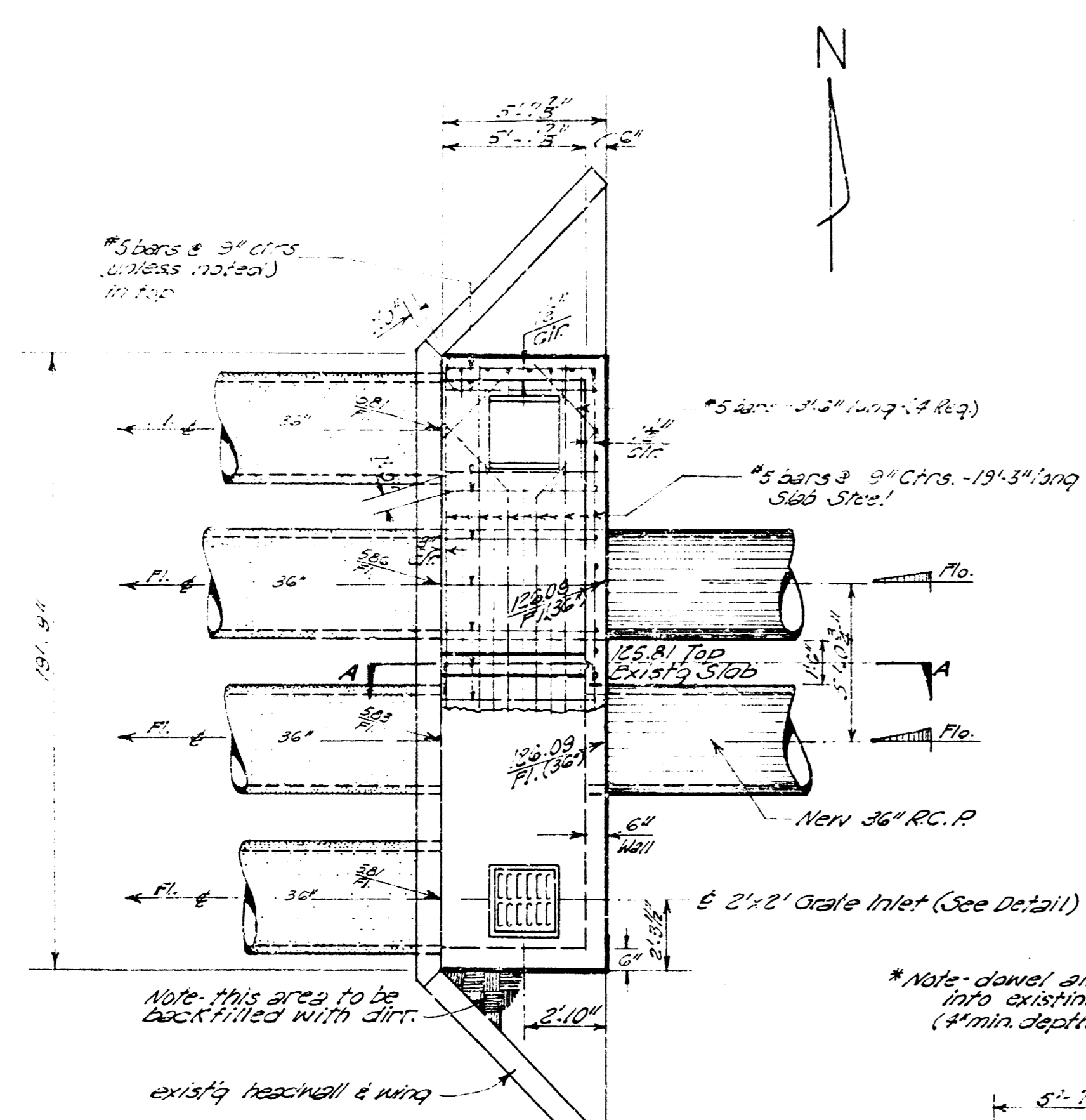
CITY OF
WICHITA, KANSAS

B. E.
SMITH

CITY
ENGINEER

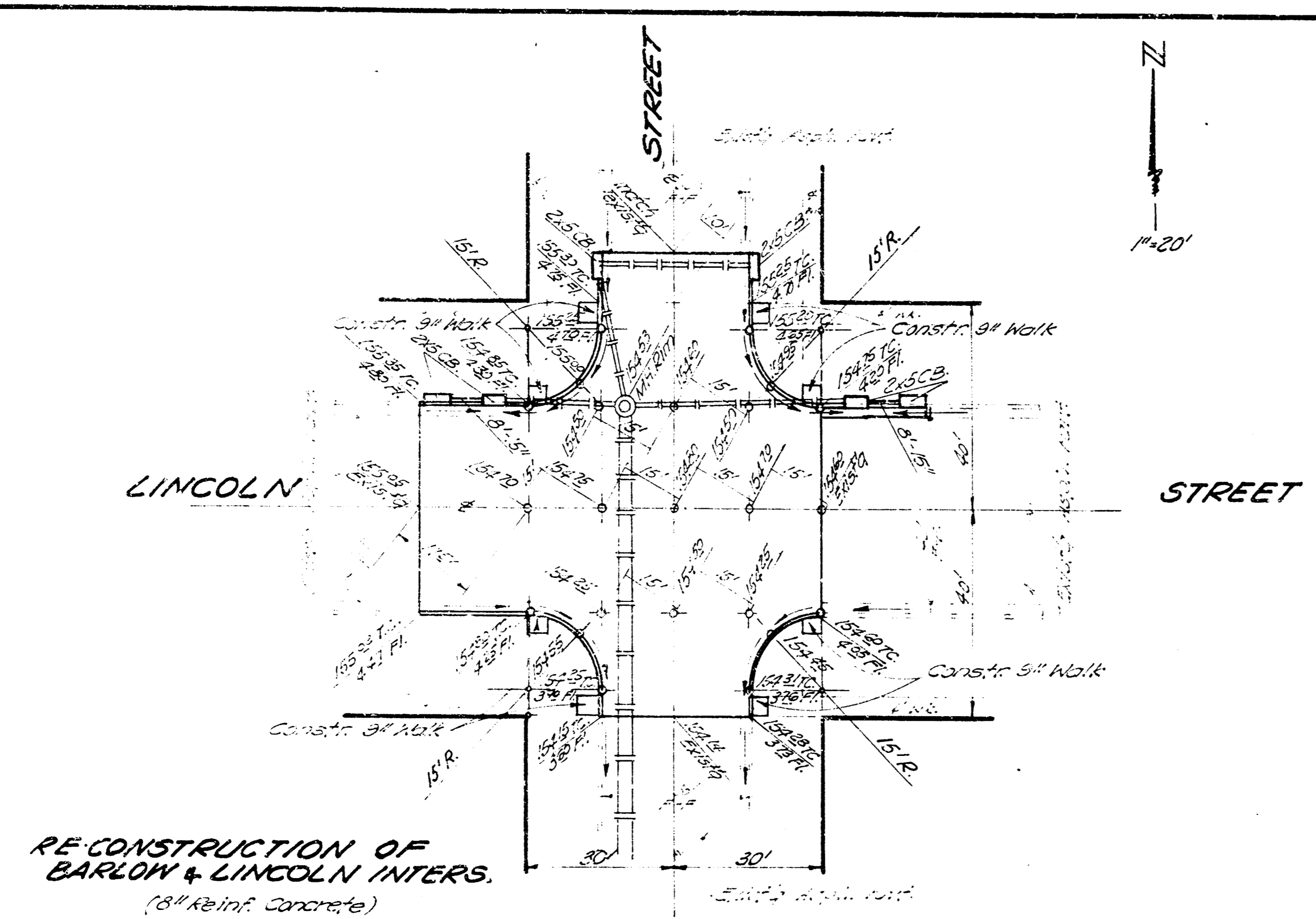
17



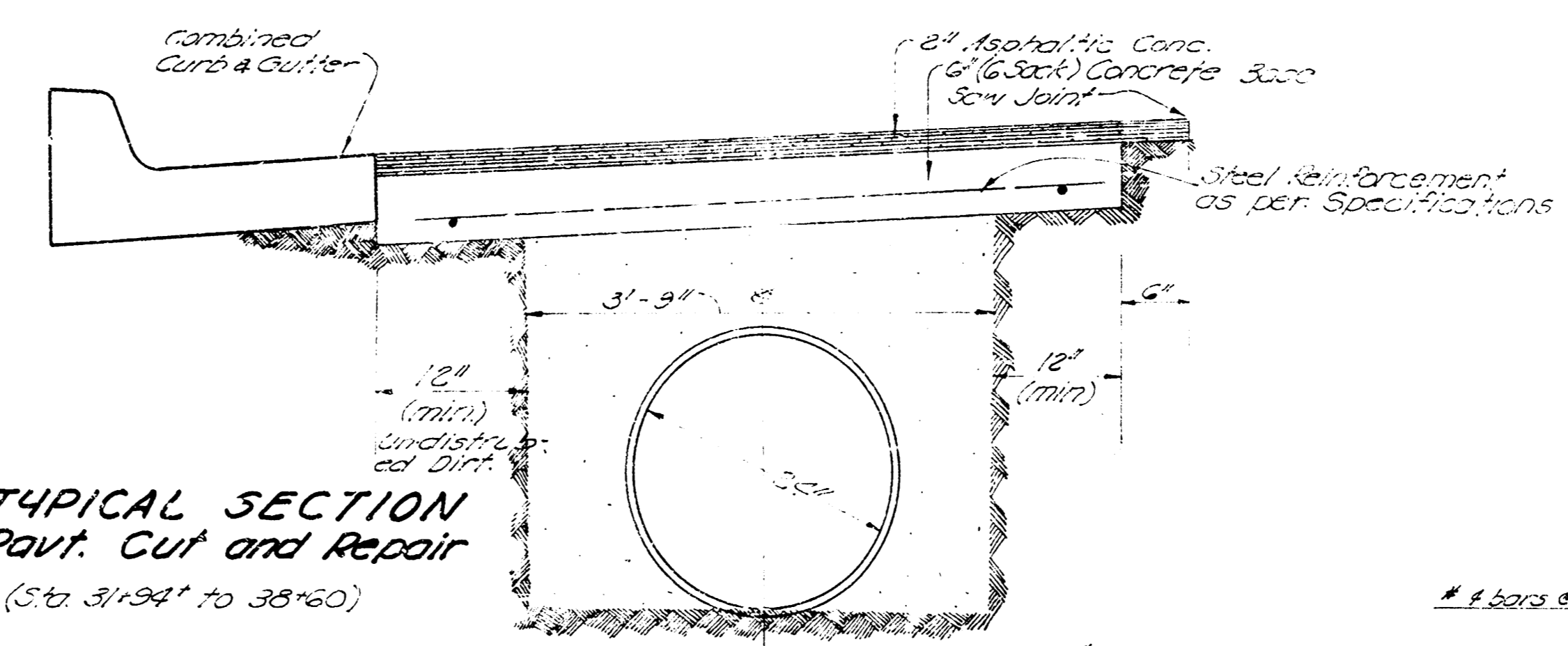


STORM WATER SEWER #79
PROJ. NO. C26-29

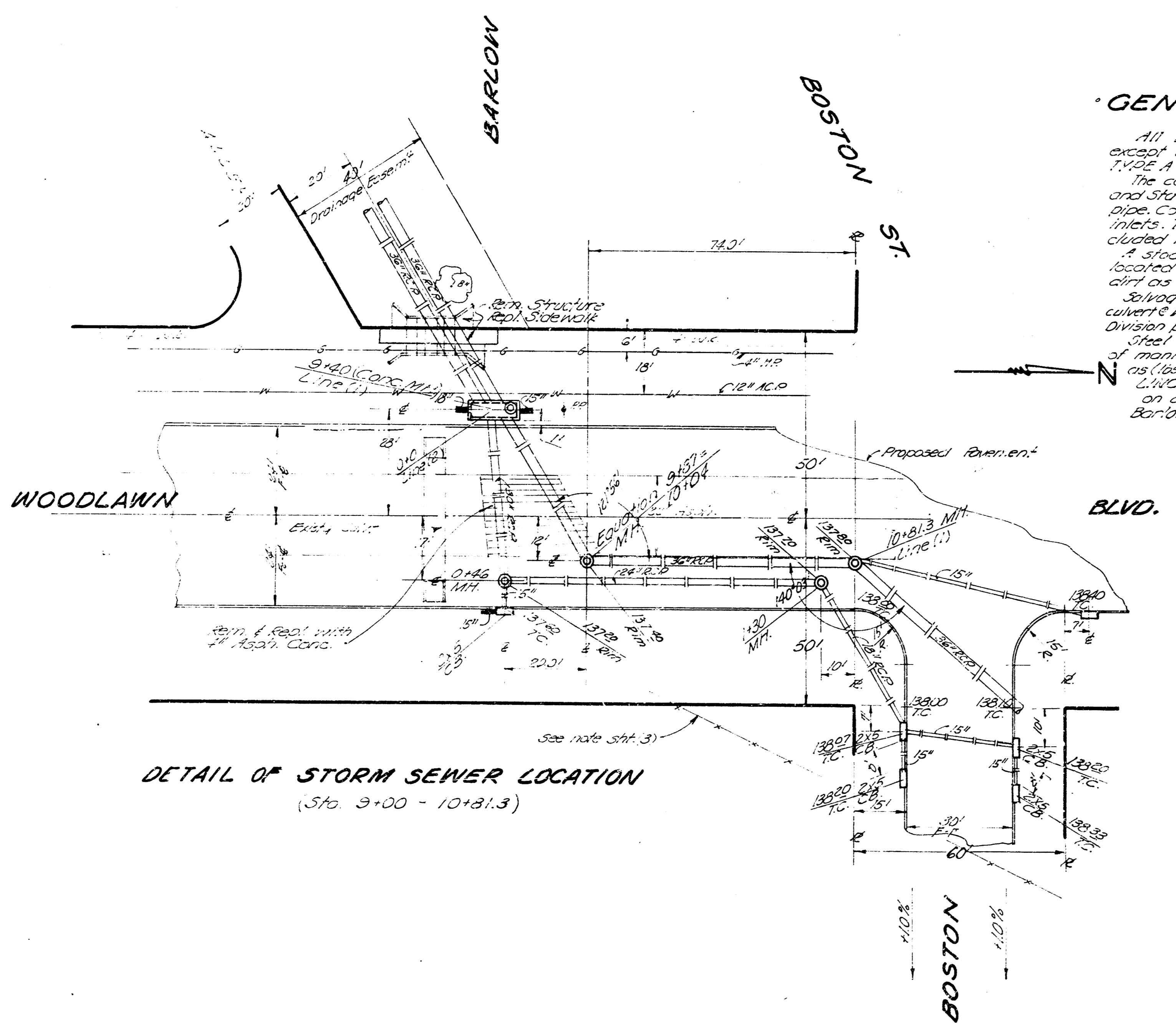
Gilbert Wichita, Kansas



RECONSTRUCTION OF
BARLOW & LINCOLN INTERS.
(8\"/>



TYPICAL SECTION
Pavt. Cut and Repair
(Sta 31+94' to 38+60)



DETAIL OF STORM SEWER LOCATION
(Sta. 9+00 - 10+13.3)

GENERAL NOTES

All brick manholes to be TYPE B-5'0\"/>

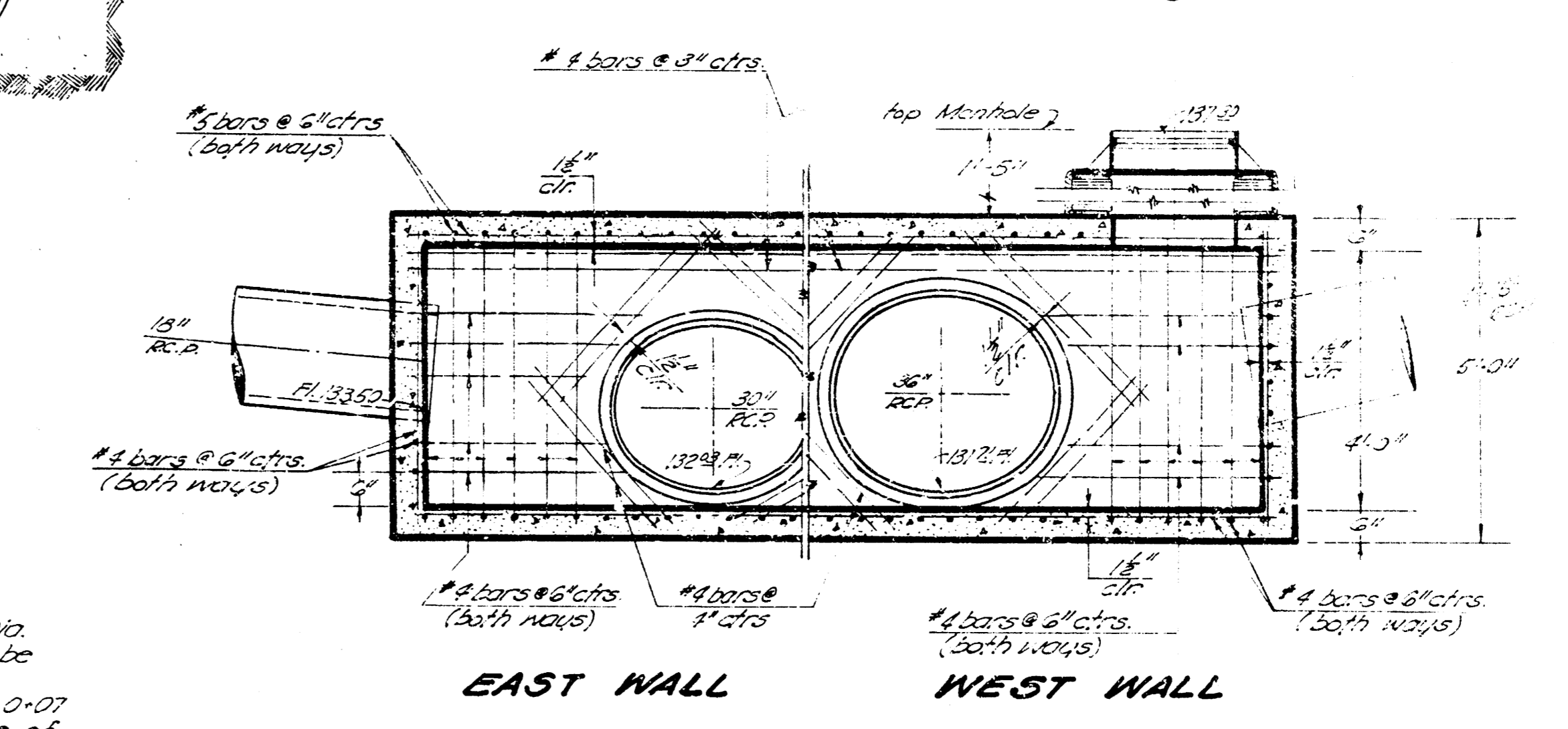
The cost of compacting backfill between Sta 9+07 and Sta 9+40 is to be included in the bid price of pipe. Compact the backfill around manholes and inlets. The cost of compacting backfill is to be included in the bid price of the structure.

A stock pile of dirt to be used on this project is located at 12th Street and 22nd Street. Use this dirt as backfill betw. Sta. 9+07 & 9+40.

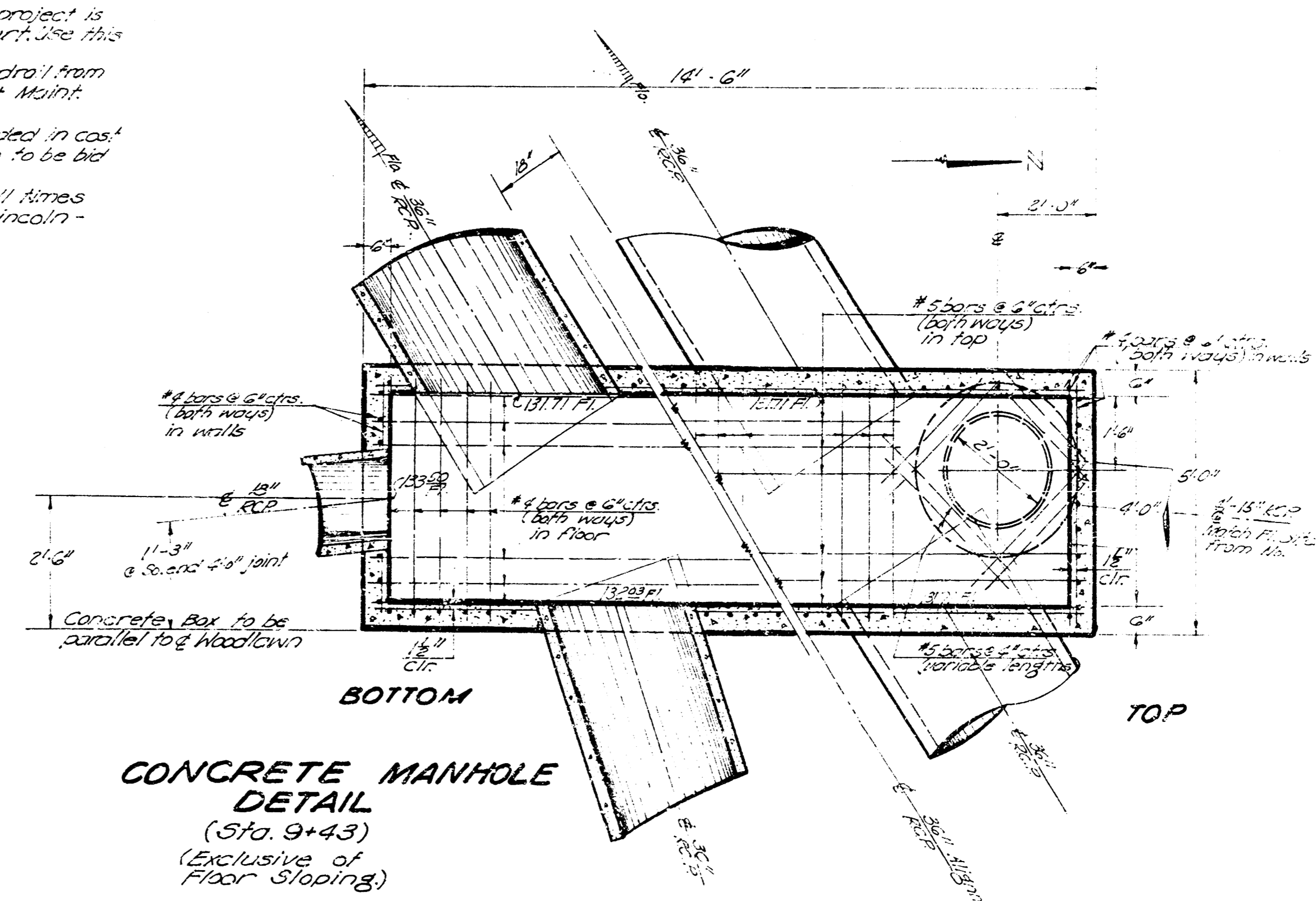
Salvage material from foot bridge and pipe handrail from culvert at Woodlawn and to City Yard. Notify Street Maint. Division prior to delivery.

Steel reinf. in conc. manholes to be included in cost of manholes, steel in all other reconstruction to be bid as (as) reinf. steel.

Woodlawn St. to be open to traffic (all times) on alternate halves while repaving Lincoln - Barlow intersection.



EAST WALL WEST WALL



CONCRETE MANHOLE
DETAIL
(Sta. 9+43)
(Exclusive of
Floor Sloping)

STORM WATER SEWER #79
PROJ. NO. C26-29
City of Wichita, Kansas