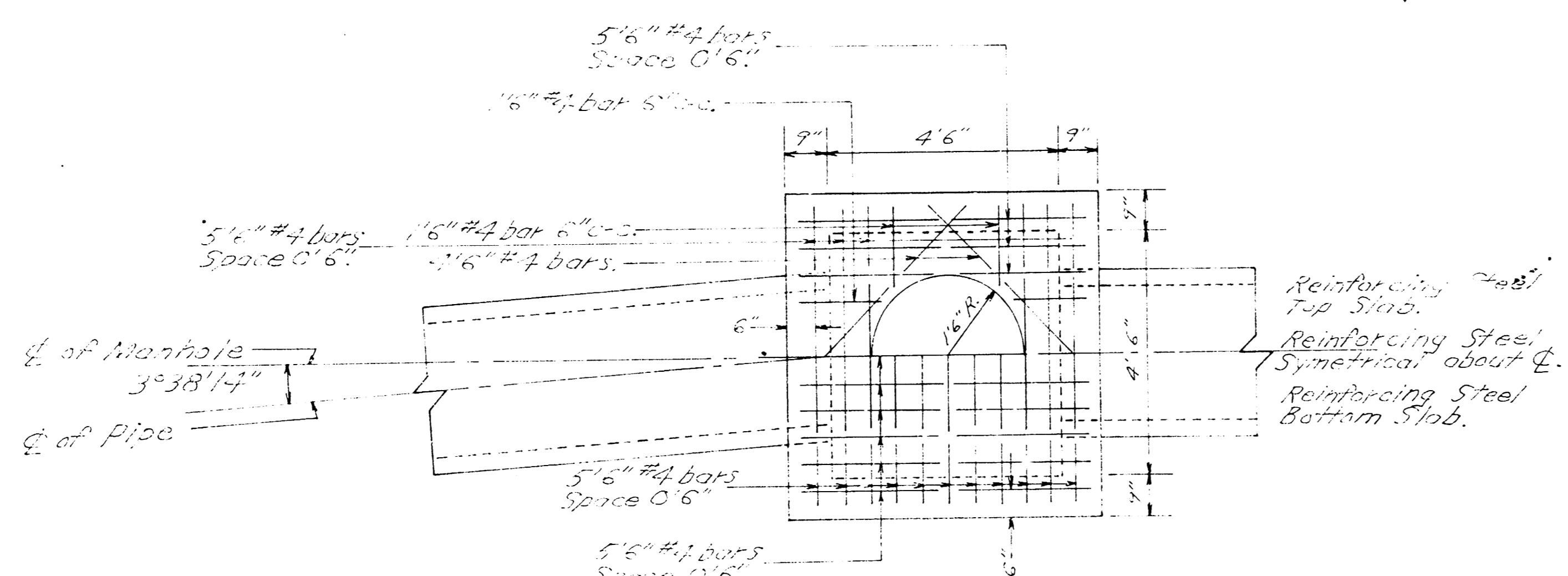
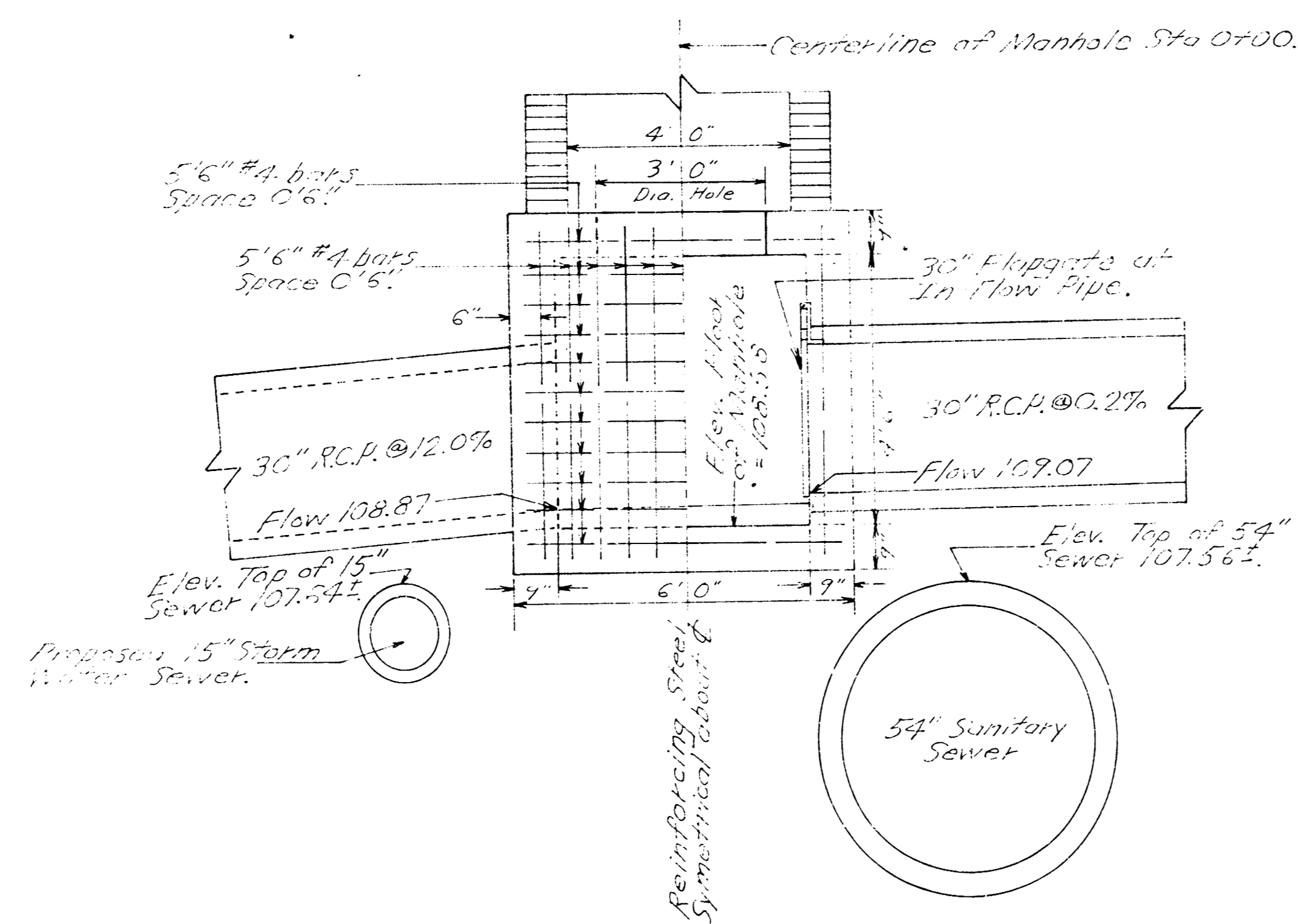




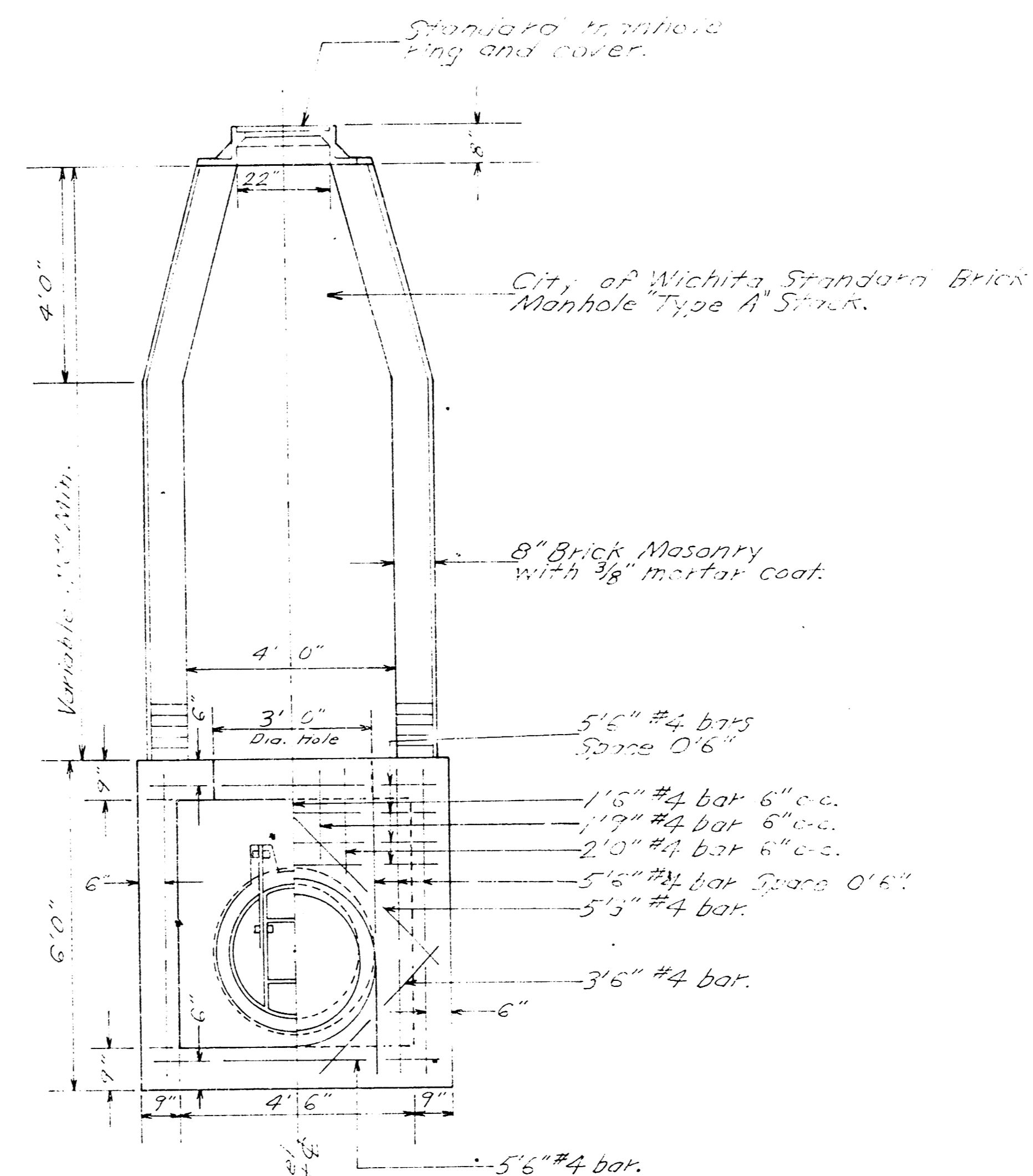
TOP VIEW



ELEVATION



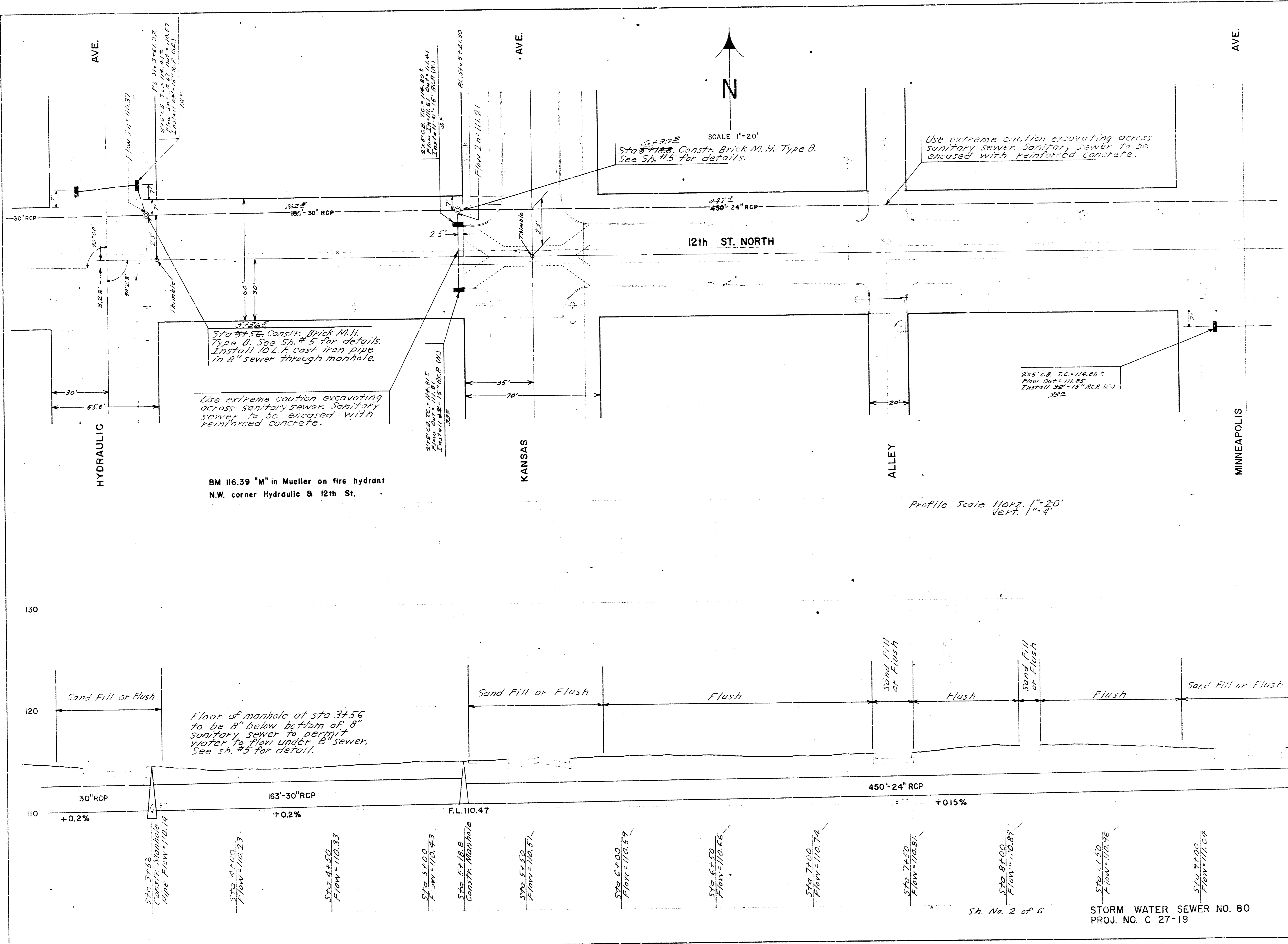
ELEVATION



Note: Concrete shall be placed in 12" lifts. Flagging shall be applied to all exposed surfaces. All surfaces shall be finished with a smooth surface. All surfaces shall be finished with a smooth surface. All surfaces shall be finished with a smooth surface.

Bill of Material  
374 Lbs. Reinforcing Steel  
4.1 Cu. Yds. Concrete

**REINFORCED  
CONCRETE  
MANHOLE**  
STORM WATER  
SEWER NO. 80  
PROJ. NO. C 27-19



AVE.

AVE.

AVE.

HYDRAULIC

KANSAS

ALLEY

MINNEAPOLIS

12th ST. NORTH

SCALE 1" = 20'



BM 116.39 "M" in Mueller on fire hydrant  
N.W. corner Hydraulic & 12th St.

Use extreme caution excavating across  
sanitary sewer. Sanitary sewer to be  
encased with reinforced concrete.

Sta 3+56 Const. Brick M.H.  
Type B. See Sh. #5 for details.  
Install 10 L.F. cast iron pipe  
in 8" sewer through manhole.

Use extreme caution excavating  
across sanitary sewer. Sanitary  
sewer to be encased with  
reinforced concrete.

Sta 5+50 Const. Brick M.H. Type B.  
See Sh. #5 for details.

2x5' C.B. T.C. 114.85' ±  
Flow Cap 111.85'  
Install 32' 15" R.C.P. (E.1)  
152

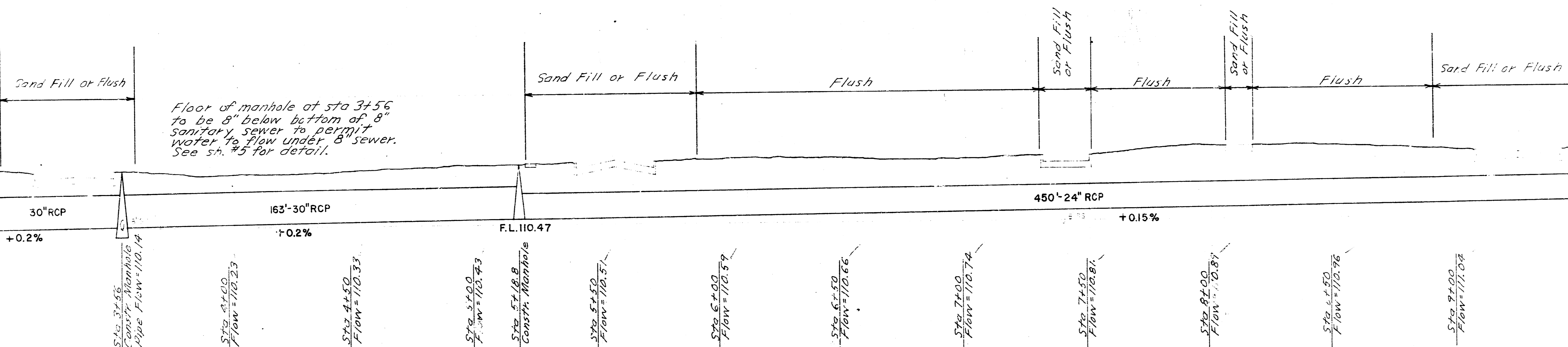
Profile Scale Horiz. 1" = 20'  
Vert. 1" = 4'

Floor of manhole at sta 3+56  
to be 8" below bottom of 8"  
sanitary sewer to permit  
water to flow under 8" sewer.  
See sh. #5 for detail.

130

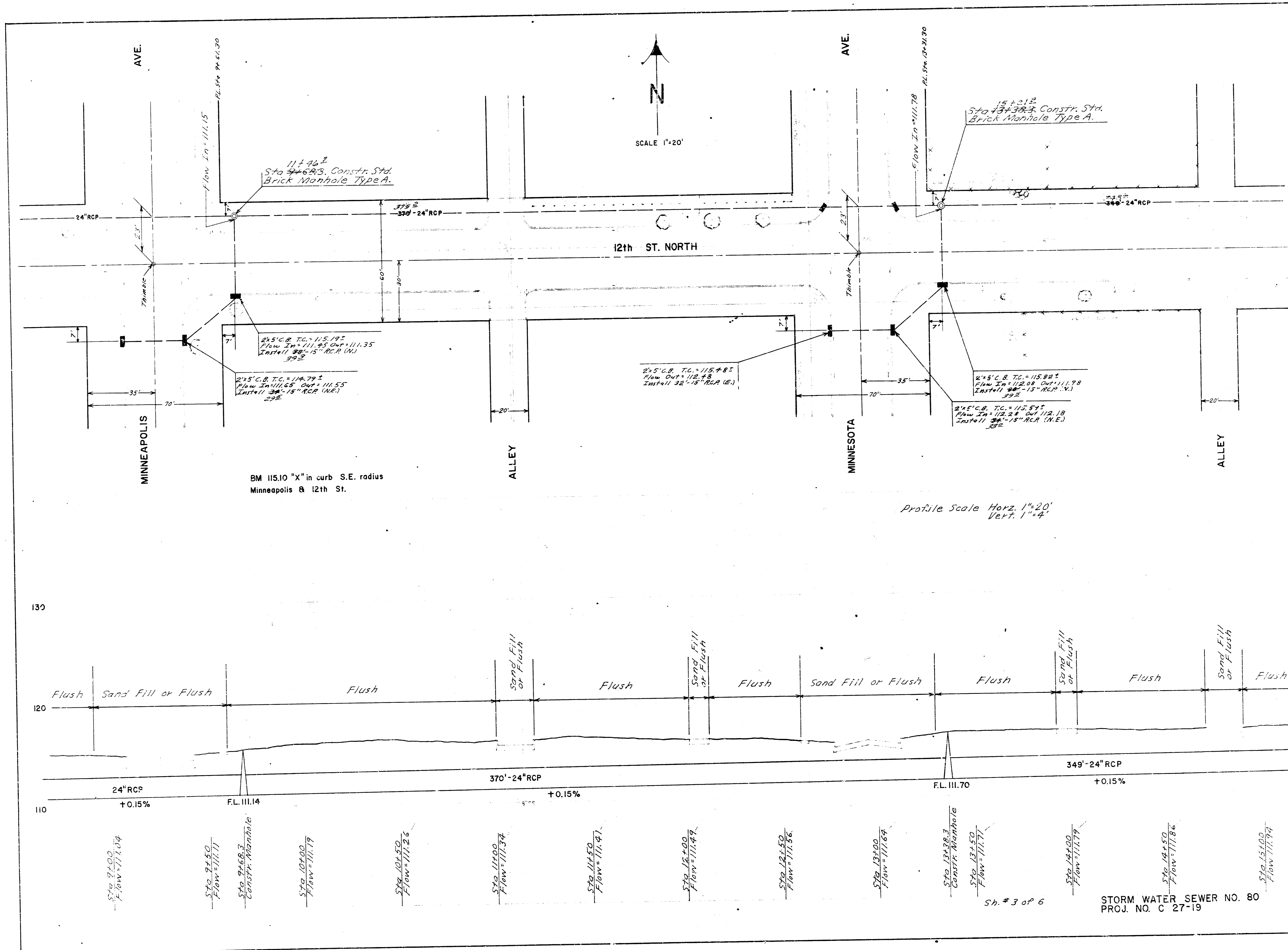
120

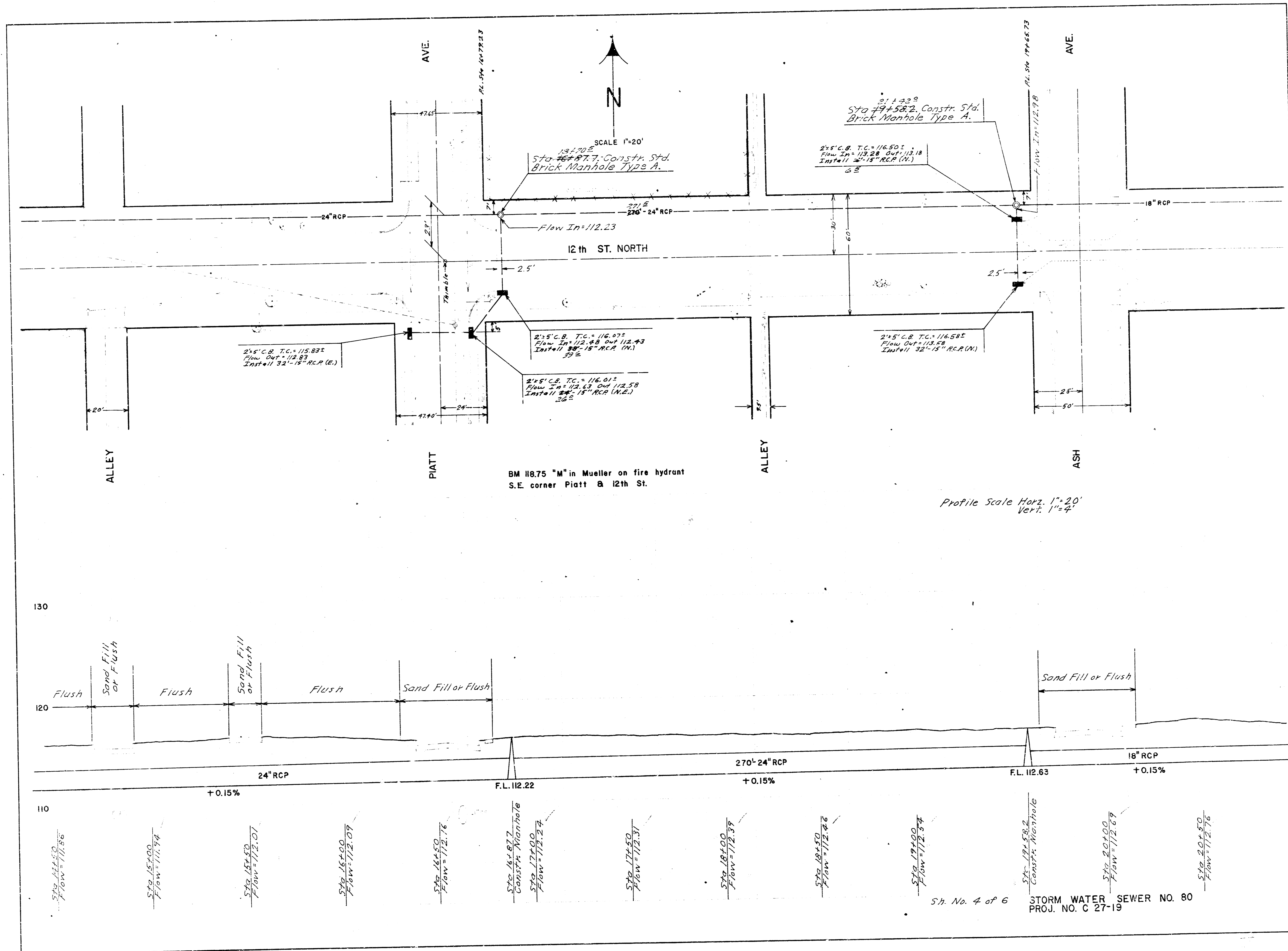
110



Sh. No. 2 of 6

STORM WATER SEWER NO. 80  
PROJ. NO. C 27-19

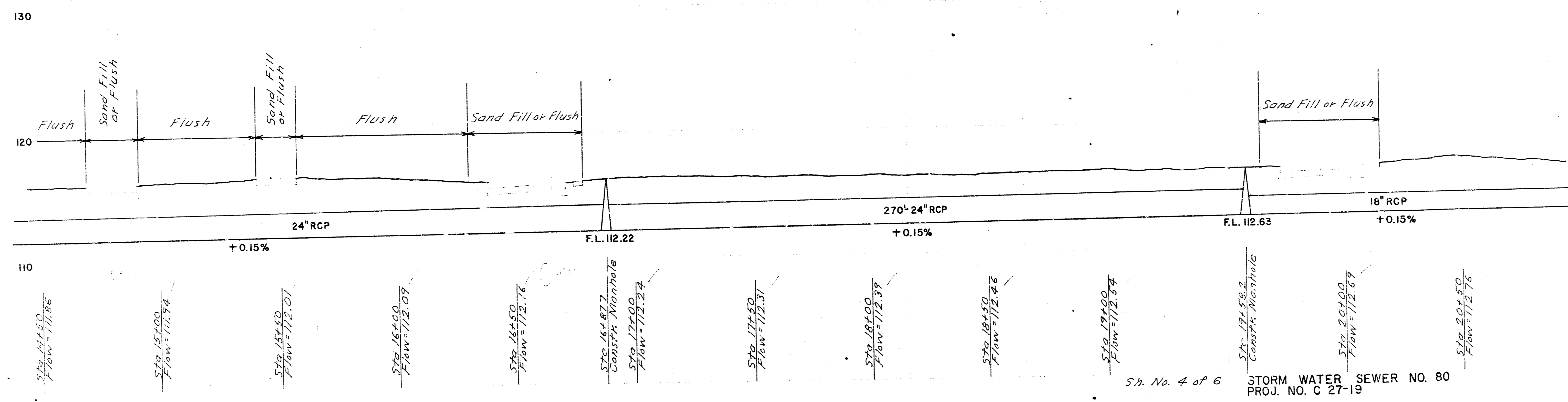




SCALE 1"=20'

Profile Scale Horiz. 1"=20'  
Vert. 1"=4'

BM 118.75 "M" in Mueller on fire hydrant  
S.E. corner Piatt & 12th St.



Sh. No. 4 of 6

STORM WATER SEWER NO. 80  
PROJ. NO. C 27-19

