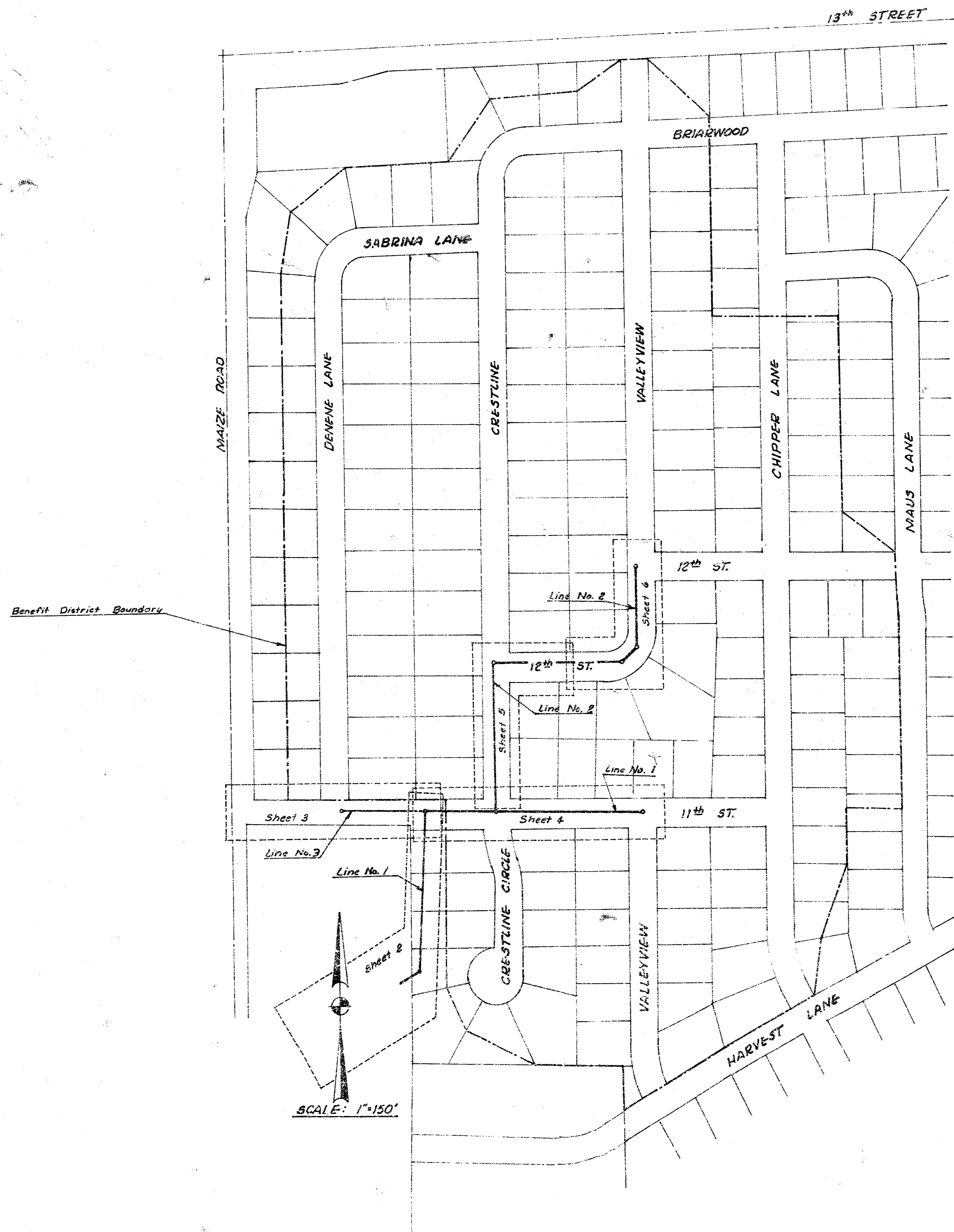


STORM WATER SEWER NO. 99

CITY OF WICHITA, KANSAS

R. W. LINN, CITY ENGINEER



At Lines
943-3645
943-0154

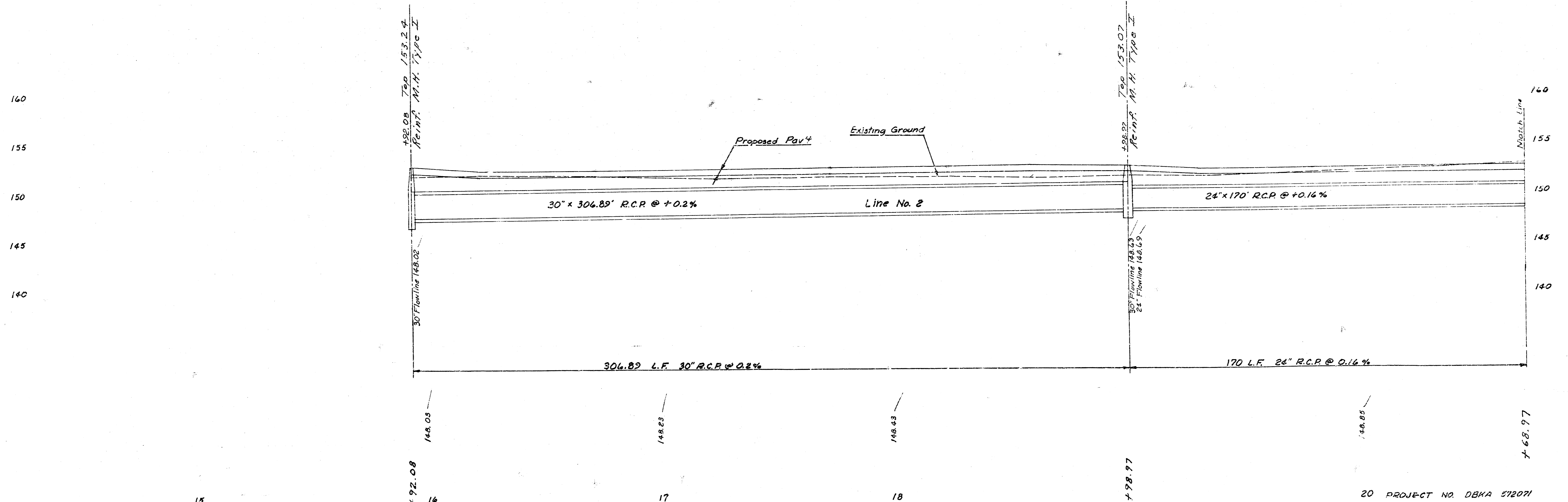
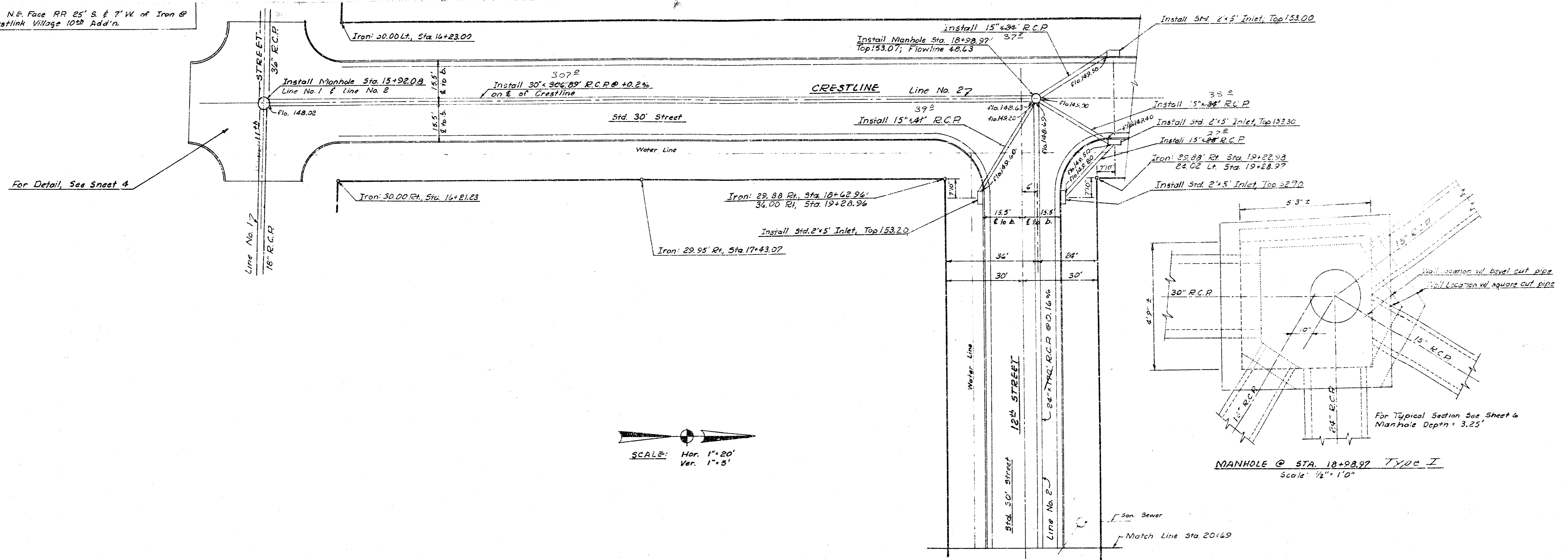
PROJECT NO. DBKA 572071

DATE: May 1st 1973

As Built, Final Meas
K-110

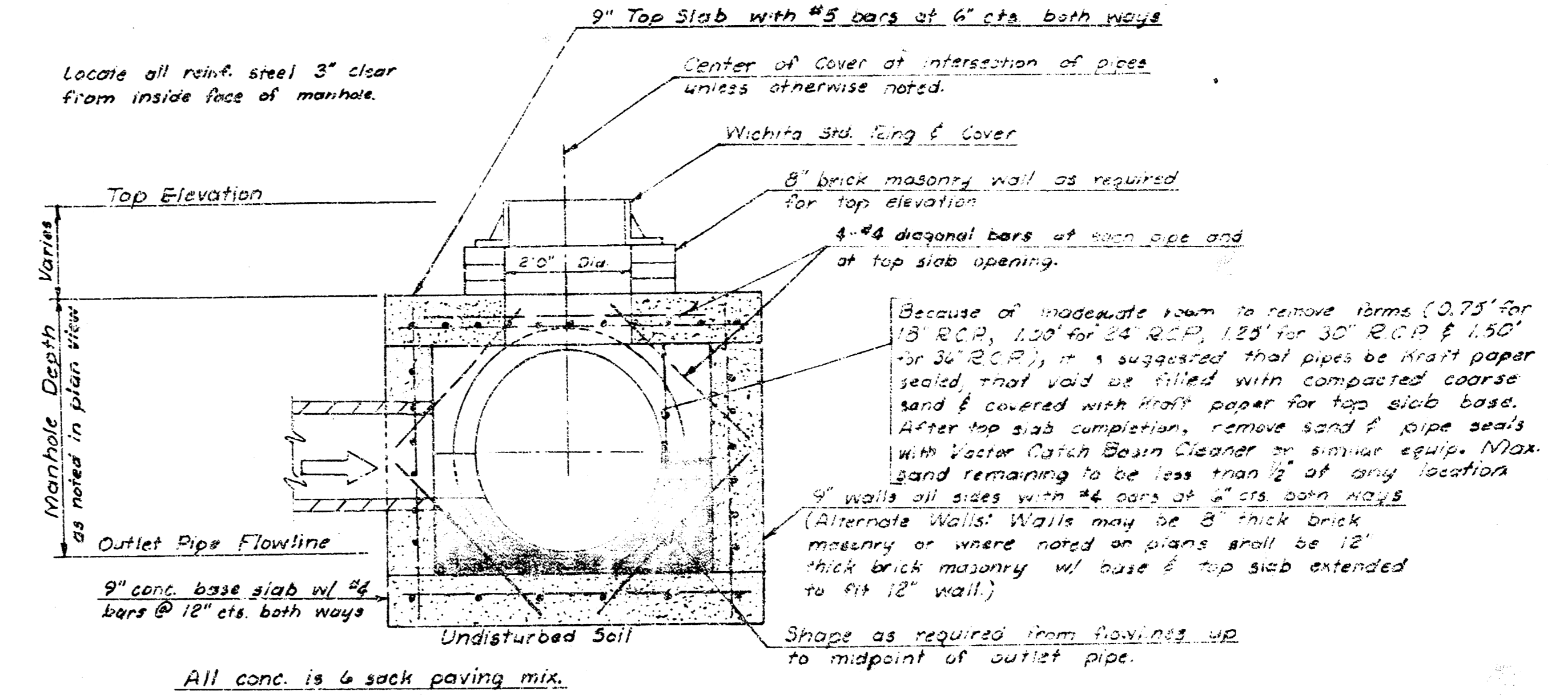


B.M. 151.858 R.R. Spike N.E. Face RR 25' S. & 7' W. of Iron @ N.W. Cor. Lot 1, Blk. B, Westlink Village 1022 Add'n.

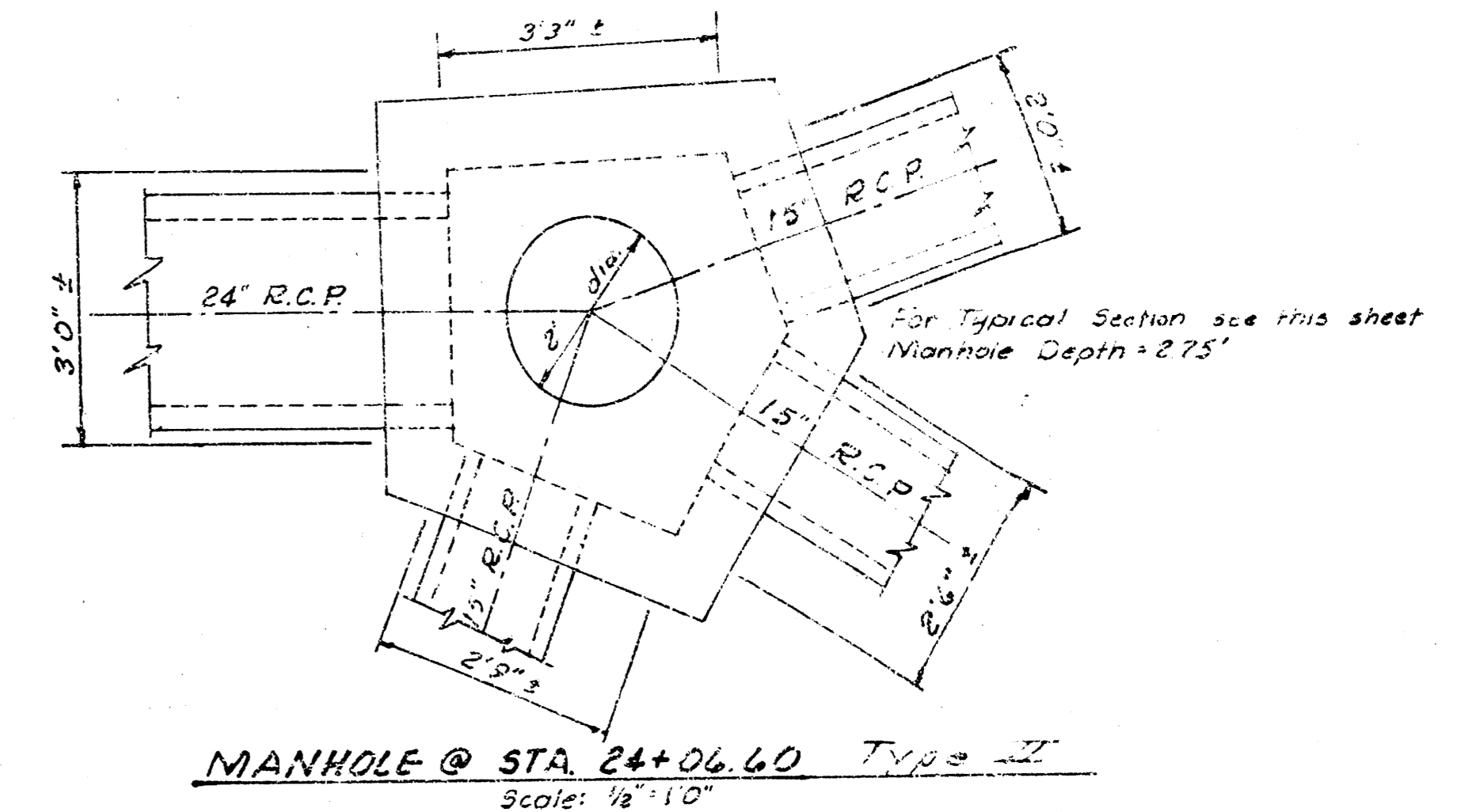


B.M. 155.427 "+ top W. curb Chipper Lane @ S.L. 12th St.

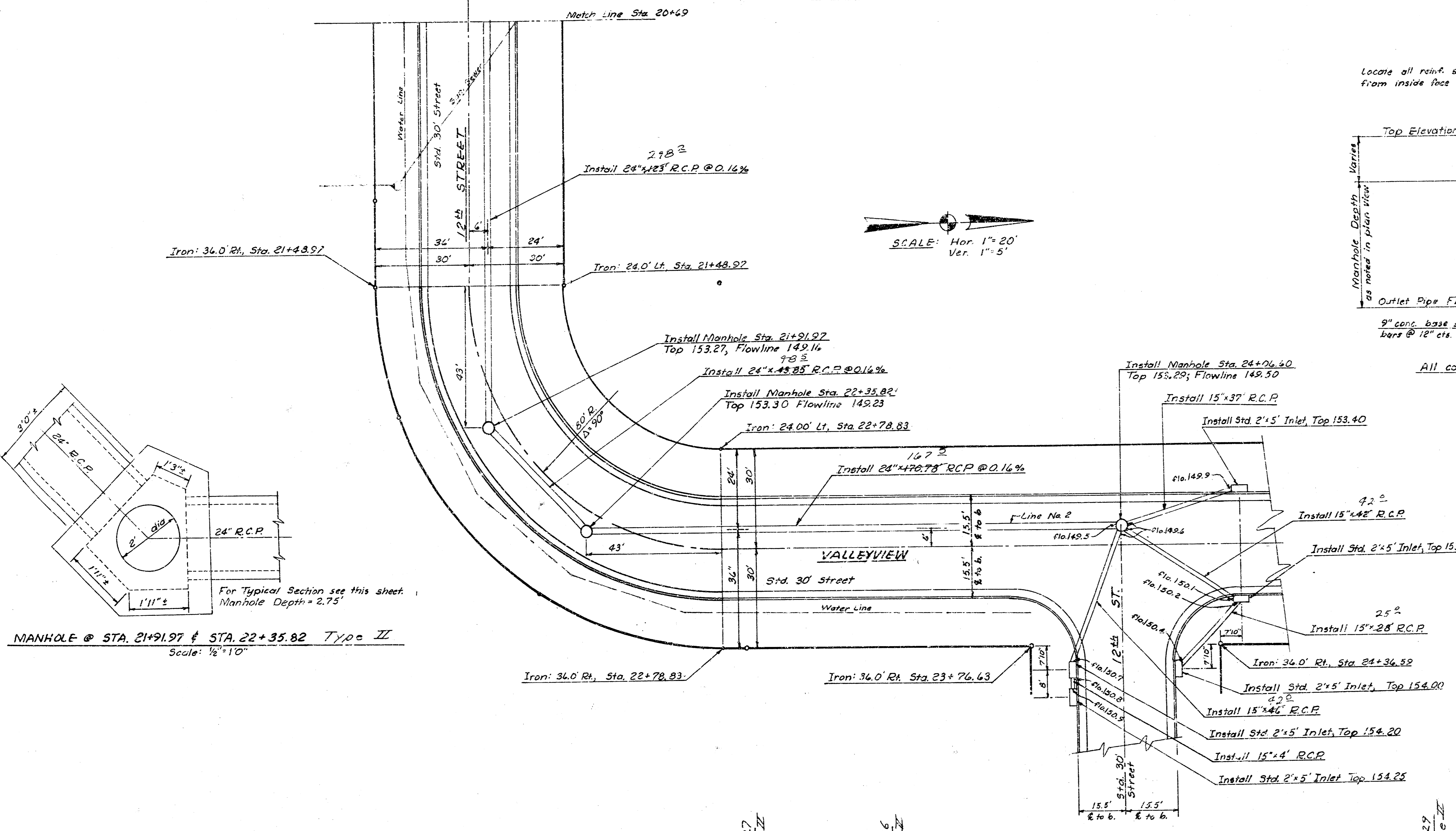
SCALE: Hor. 1"=20'
Ver. 1"=5'



TYPICAL SECTION THRU MANHOLE
Scale: 1/8"=1'-0"

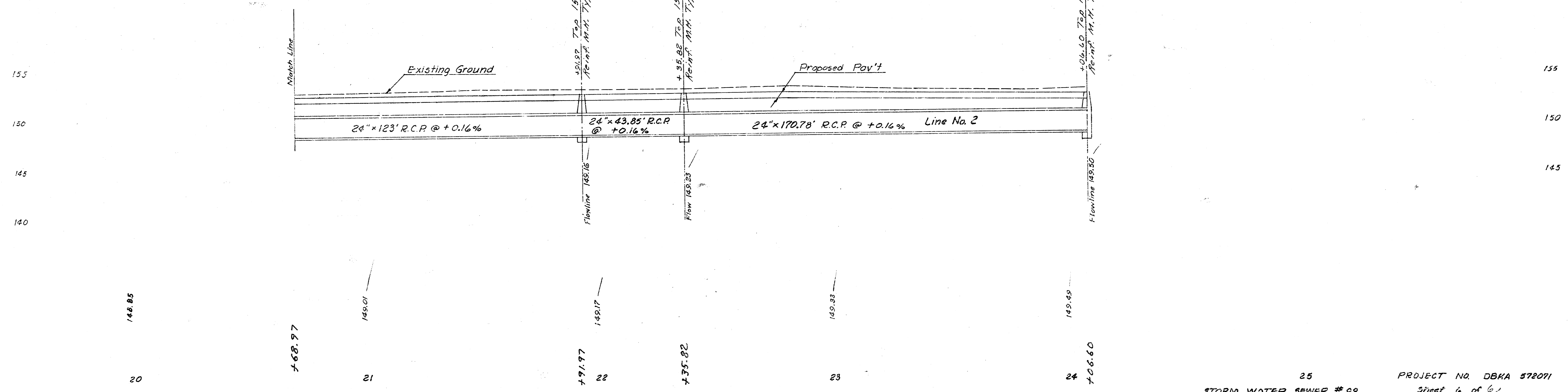


MANHOLE @ STA. 24+06.60 Type II
Scale: 1/8"=1'-0"



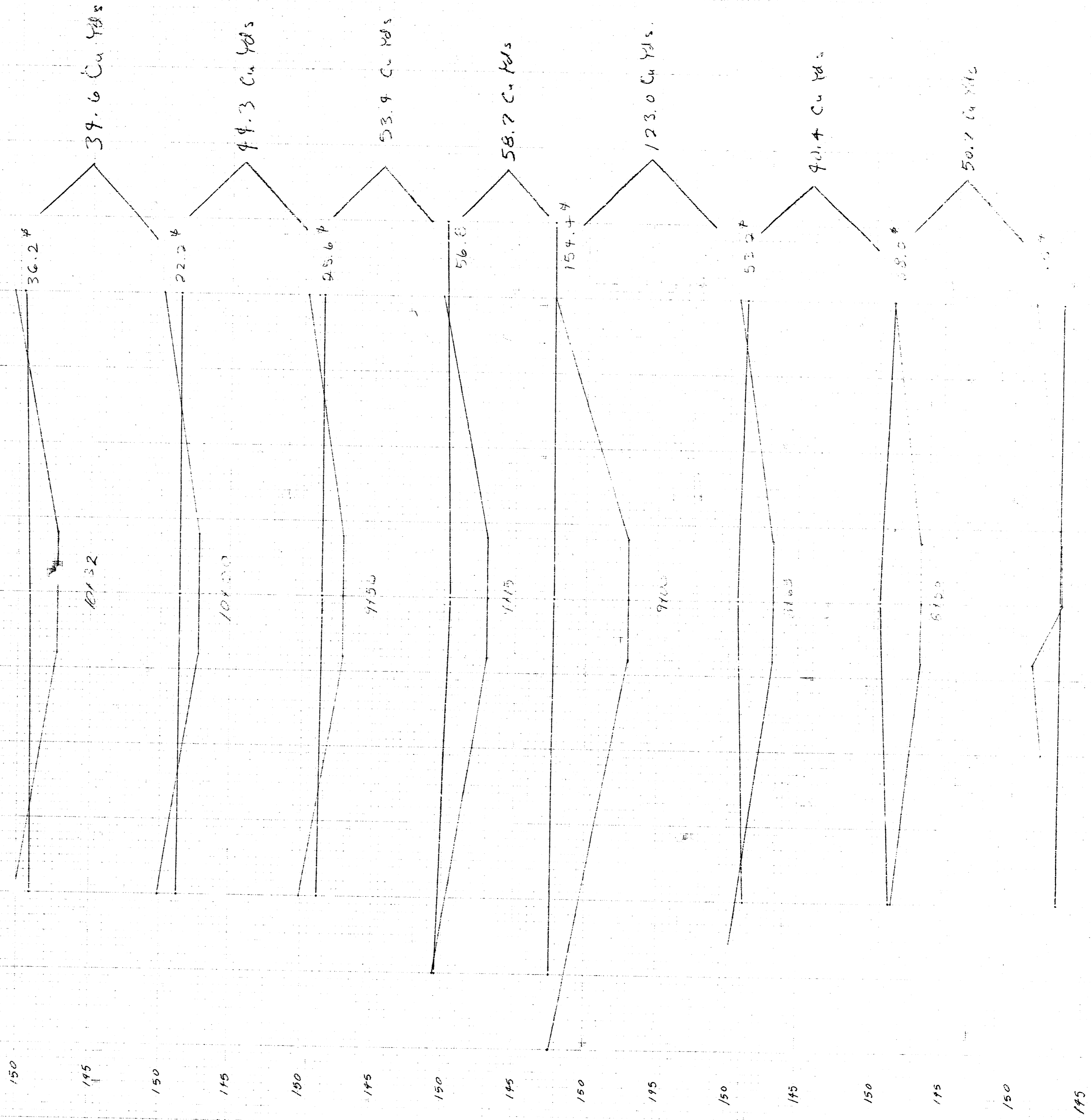
MANHOLE @ STA. 21+91.97 & STA. 22+35.82 Type II
Scale: 1/8"=1'-0"

MANHOLE @ STA. 24+06.60 Type II
Scale: 1/8"=1'-0"



C-
10458 058.7

153.27



75101 X 2 1/2" Cu Yds
of Construction

Storm Water Sewer #99