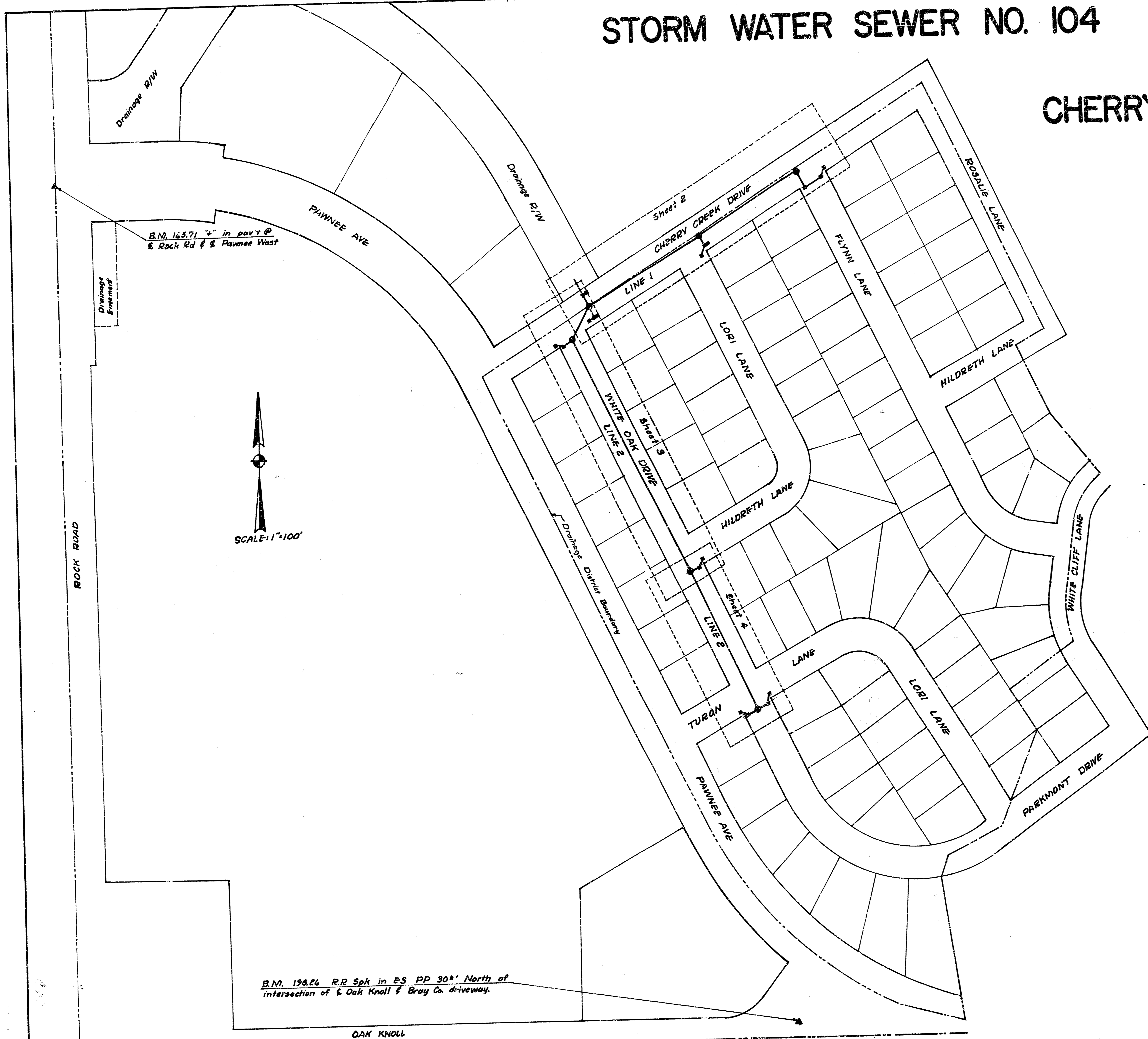
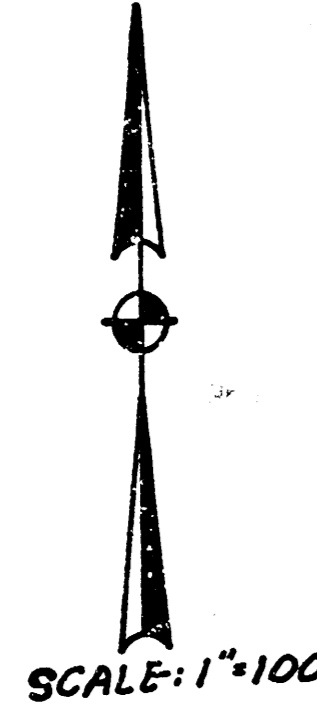


STORM WATER SEWER NO. 104

CHERRY CREEK HILLS



B.M. 165.71 4" in pav't @
E. Rock Rd & Pawnee West



B.M. 196.26 R.R. Spk in E.S. PP 30' North of
intersection of E. Oak Knoll & Bray Co. driveway.

CONSTRUCTION NOTES

ALL MANHOLES TO HAVE WIDE FLANGE MANHOLE RINGS NO. 500 AS MANUFACTURED BY WESTERN IRON & FOUNDRY CO. OR APPROVED EQUAL AND ADDITIONAL COSTS OF SUCH RINGS SHALL BE INCLUDED IN PRICE BID FOR STANDARD MANHOLES.

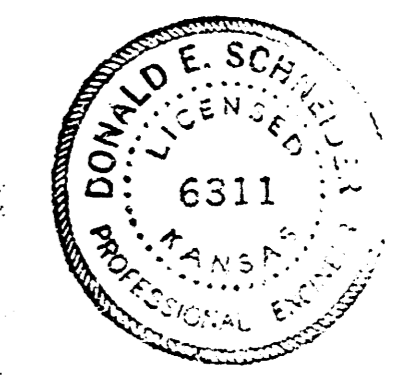
ALL PIPE TO BE R.C.P. OR ALL PIPE TO BE C.M.P. PIPE END-SECTION TO BE OF SAME TYPE & SIZE AS PIPE.

C.M.P. SHALL BE IN ACCORDANCE WITH TYPE I OF SECTION R6 OF KANSAS STATE HIGHWAY COMMISSION 1966 STANDARD SPECIFICATIONS. ALL C.M.P. SHALL BE COMED IN ACCORDANCE WITH TYPE B OF SECTION R8 OF KANSAS STATE HIGHWAY COMMISSION 1966 STANDARD SPECIFICATIONS.

THIS PROJECT SHALL BE COORDINATED WITH SANITARY SEWER PROJECTS TO BE CONSTRUCTED IN STREET RIGHT-OF-WAY BY OTHERS.

R. W. LINN, CITY ENGINEER
CITY OF WICHITA, KANSAS

DATE: Aug. 1973

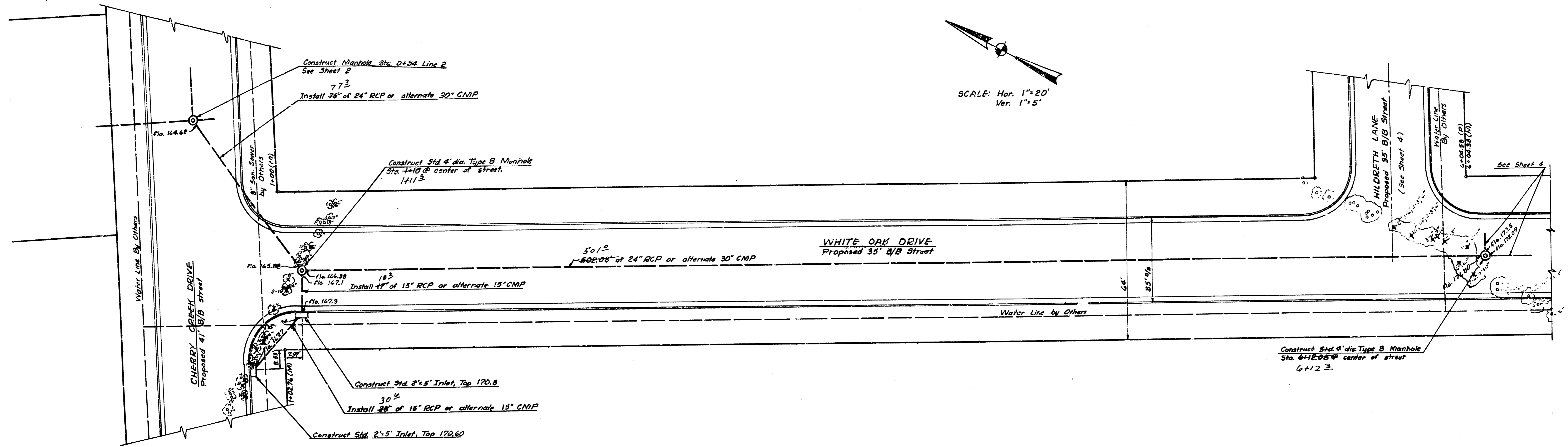
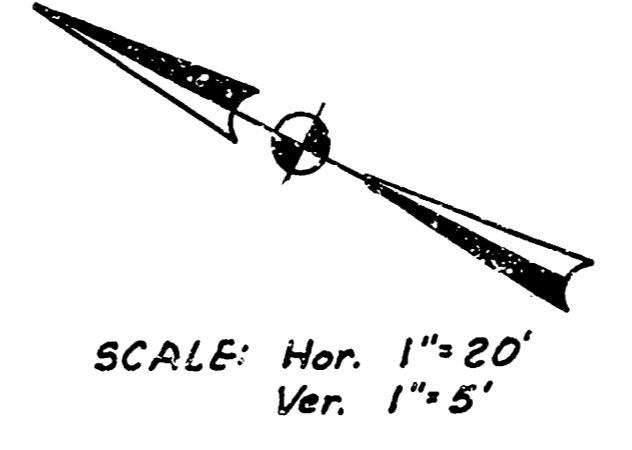


STORM WATER SEWER NO. 104
Project No. DBKA 573022

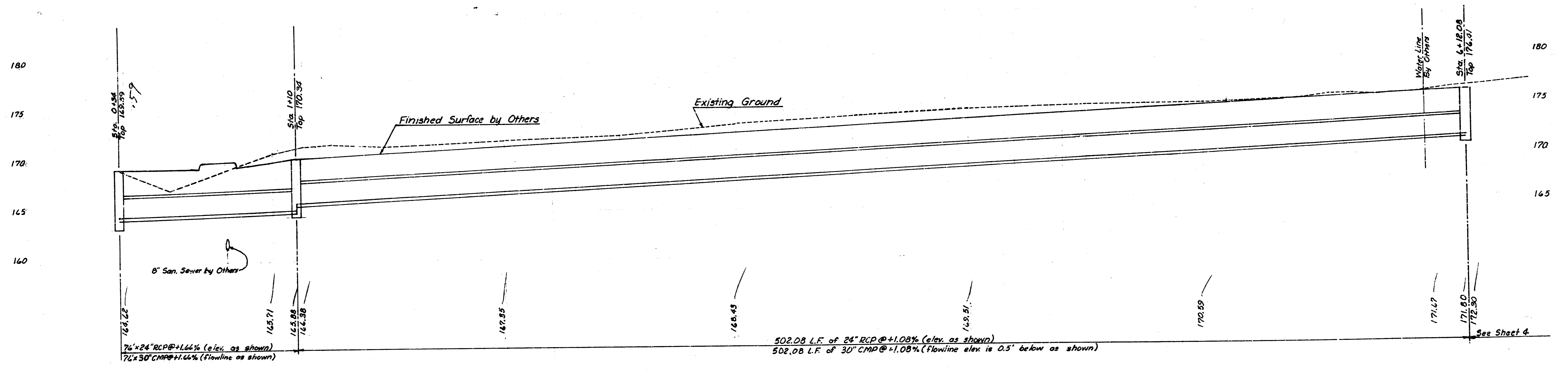
As Built
Final Meas.
279 Y

Sheet 1 of 4

BM See Sheet 1



Sewer Sta. = Street Plan Sta. + 100'

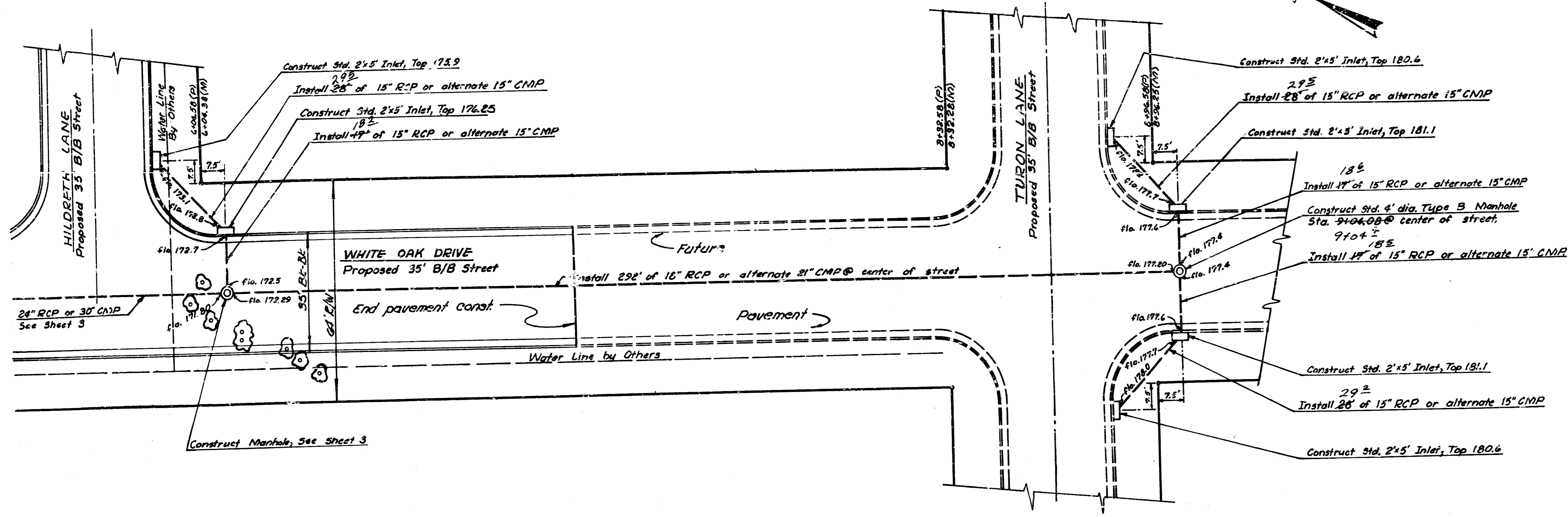


LINE 2

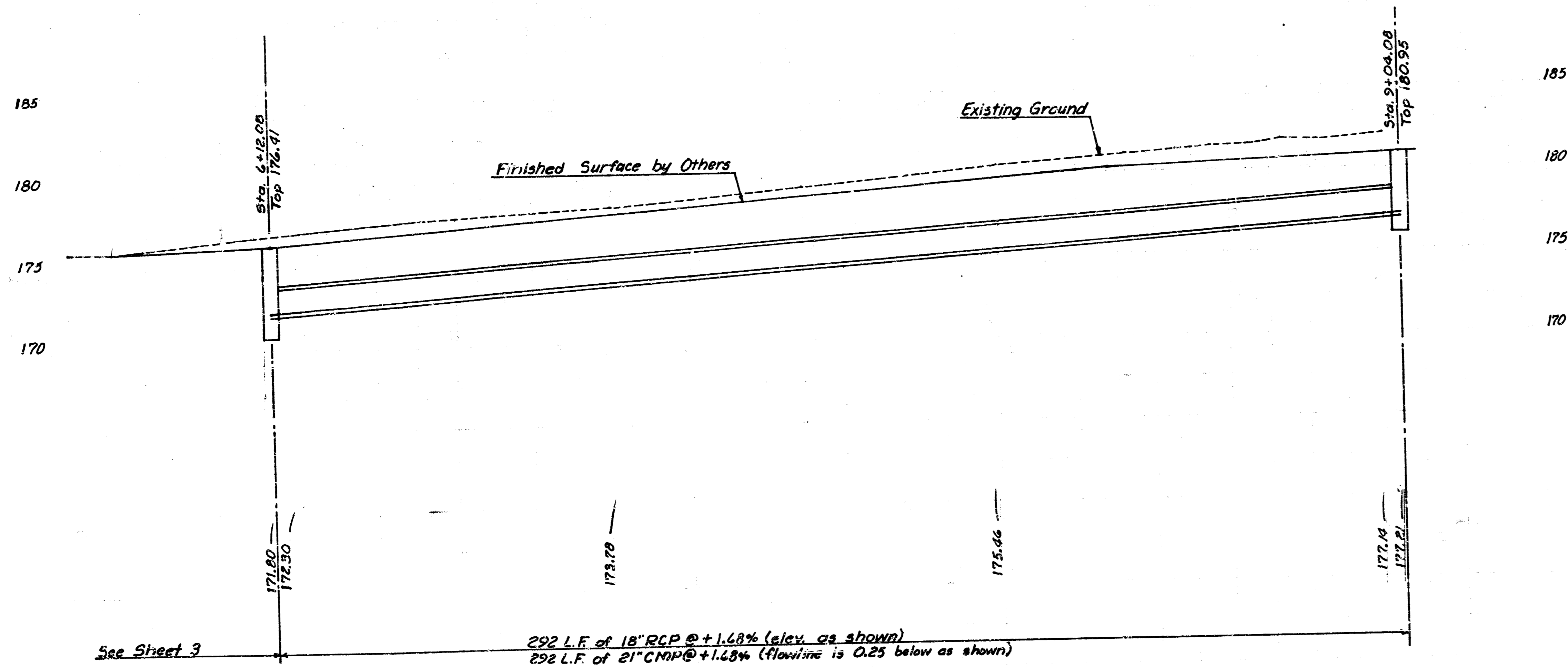
FILMED FROM THE BEST AVAILABLE COPY....

B.M. See Sheet 1

SCALE: Hor. 1"=20'
Ver. 1"=5'



Sewer Sta. = Street Plan Sta. +100'



LINE 2

STORM WATER SEWER NO. 104
Project No. DAKA 573022

Sheet 4 of 4

FILMED FROM THE BEST AVAILABLE COPY