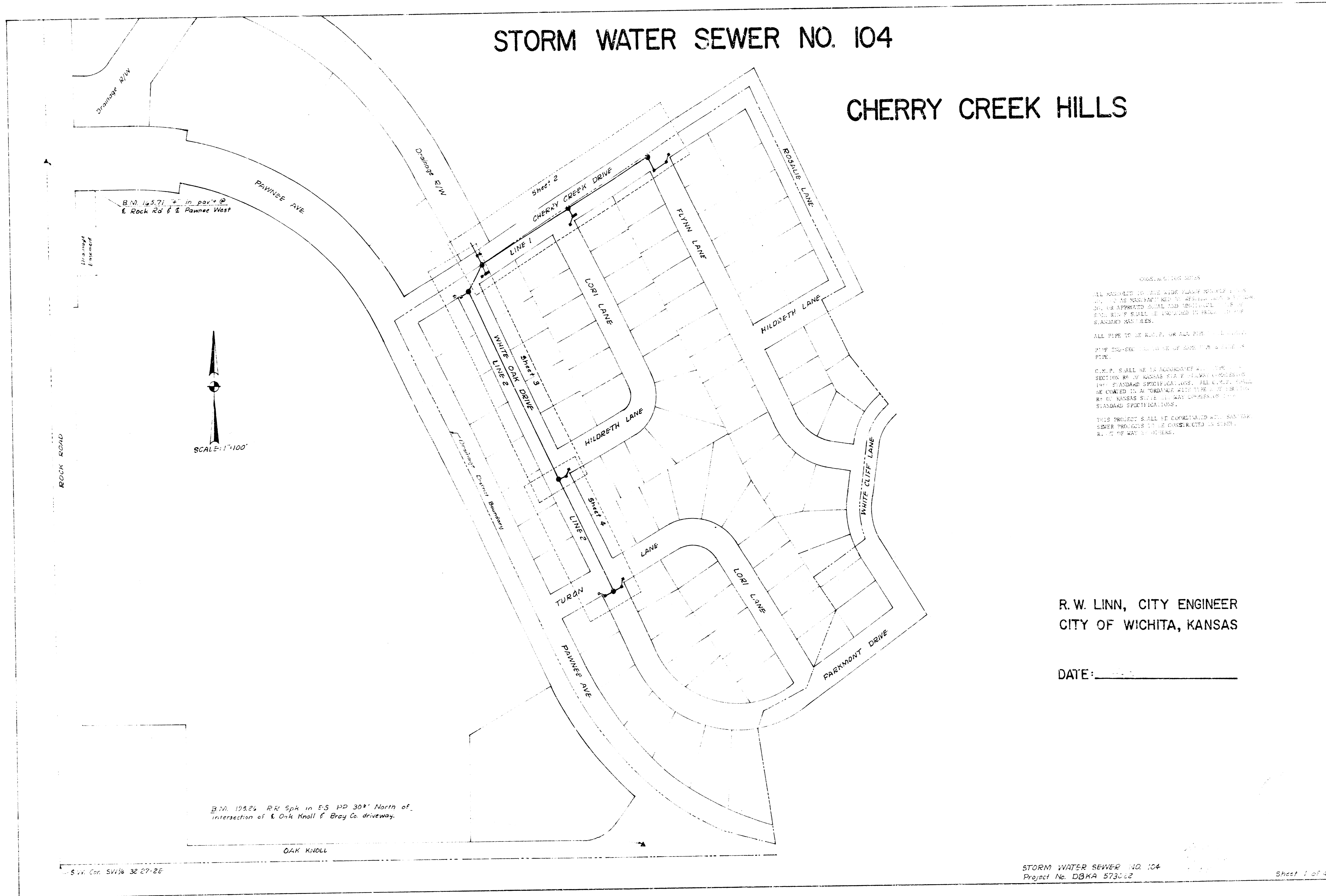


STORM WATER SEWER NO. 104

CHERRY CREEK HILLS



CONSTRUCTION NOTES

ALL MATERIALS TO BE USED SHALL BE APPROVED BY THE CITY ENGINEER AND SHALL BE INSTALLED IN ACCORDANCE WITH THE CITY APPROVED STANDARD SPECIFICATIONS FOR STORM WATER SEWER PIPE AND FITTINGS. ALL PIPE SHALL BE 15" DIA. UNLESS OTHERWISE SPECIFIED.

ALL PIPE TO BE 15" DIA. UNLESS OTHERWISE SPECIFIED. THE MINIMUM COVER SHALL BE 48" UNLESS OTHERWISE SPECIFIED.

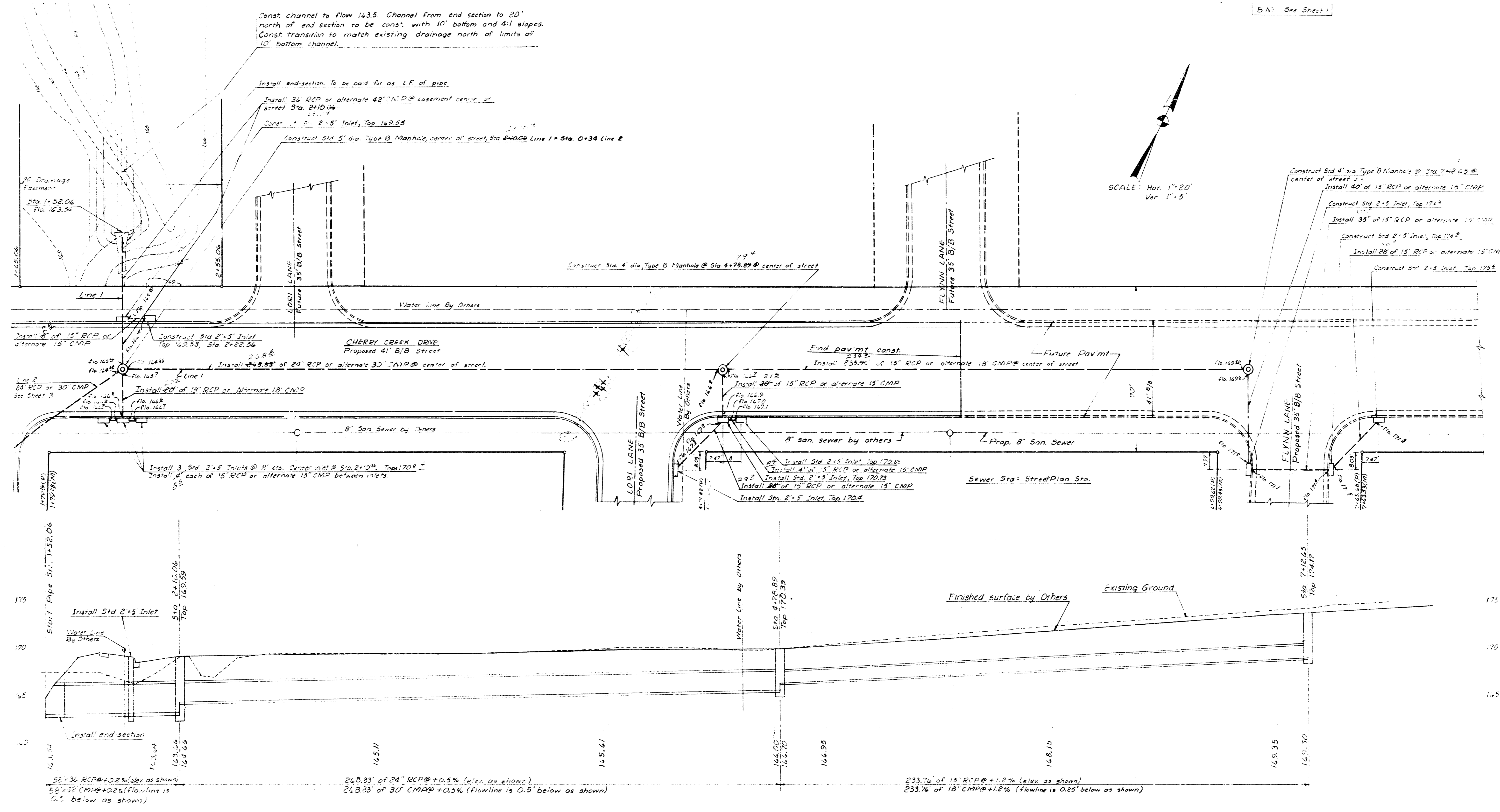
E.C.P. SHALL BE TO ACCORDANCE WITH THE CITY STANDARD SPECIFICATIONS FOR E.C.P. UNLESS OTHERWISE SPECIFIED. ALL E.C.P. SHALL BE 15" DIA. UNLESS OTHERWISE SPECIFIED.

THIS PROJECT SHALL BE CONSTRUCTED AND MAINTAINED IN ACCORDANCE WITH THE CITY STANDARD SPECIFICATIONS FOR STORM WATER SEWER PIPE AND FITTINGS.

R. W. LINN, CITY ENGINEER
CITY OF WICHITA, KANSAS

DATE: _____

B.N. See Sheet 1



SCALE: Hor 1"=20'
Ver 1"=5'

LINE 1

2

3

4

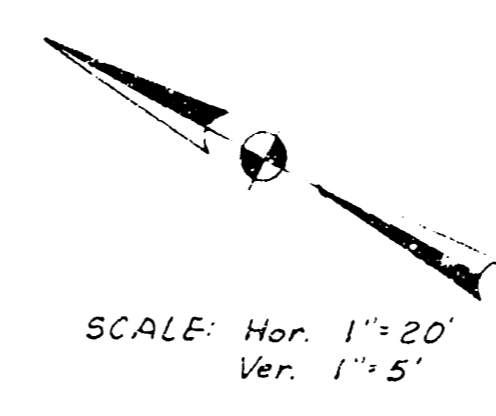
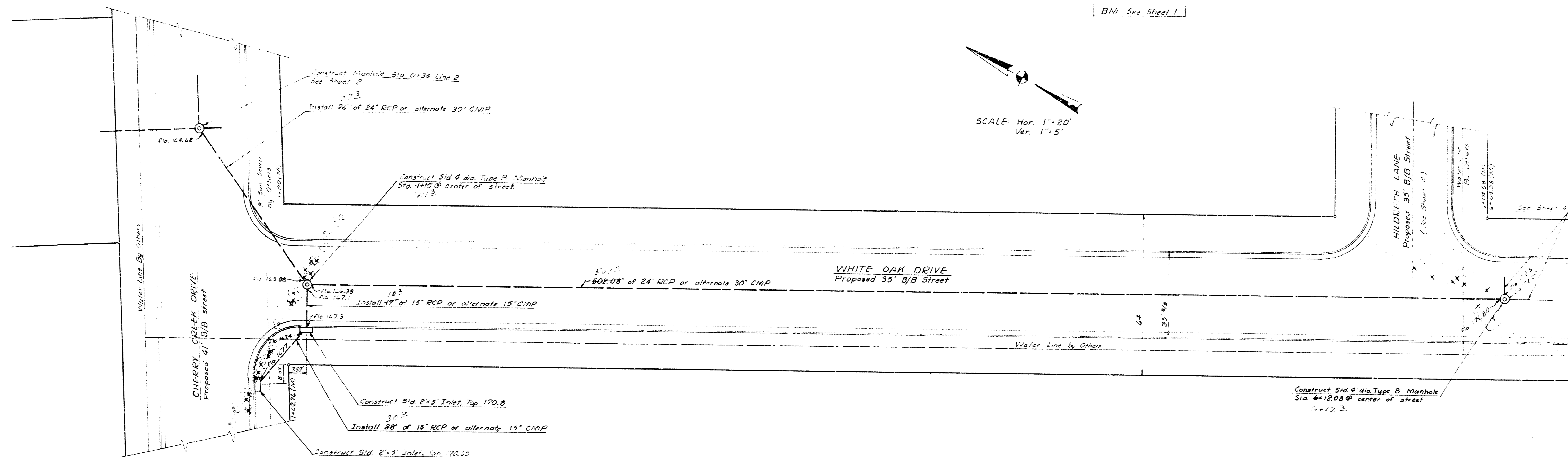
5

6

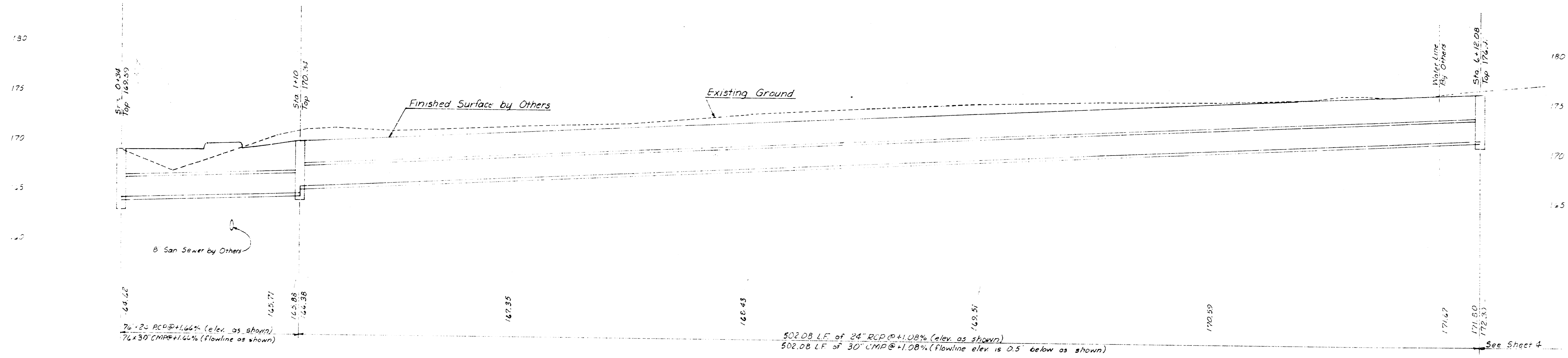
7

STORM WATER SEWER NO. 104
Project No. DAKA 573022

Sheet 2 of 4



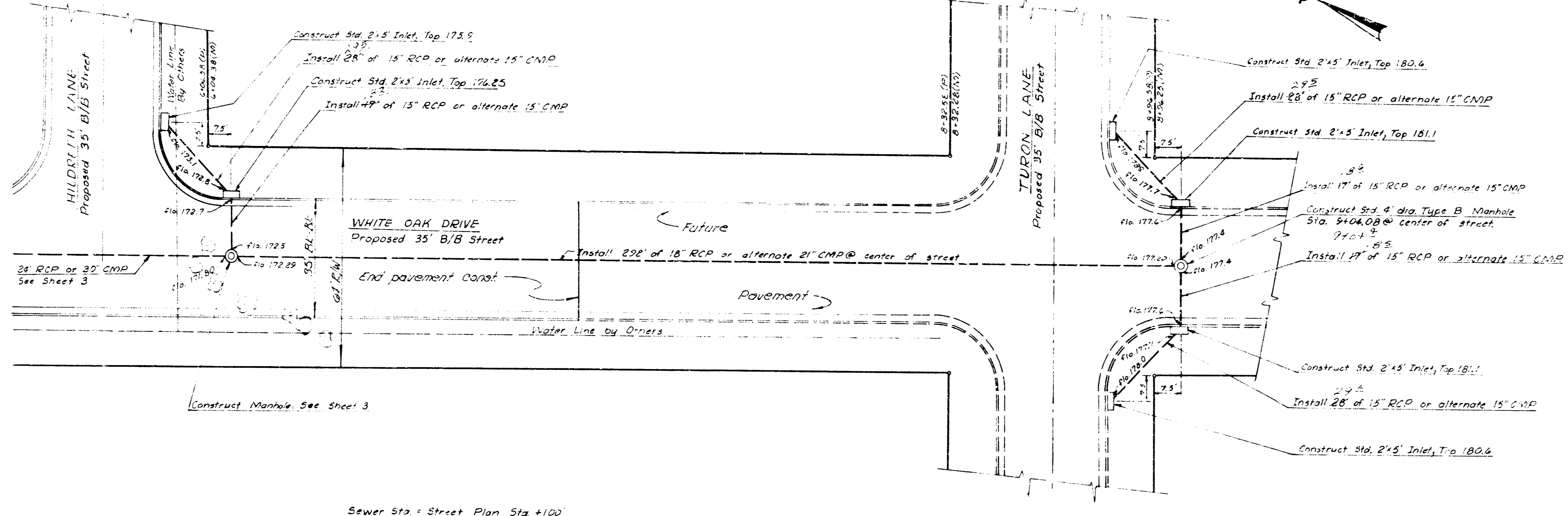
Sewer Sta = Street Plan Sta + 100'



LINE 2

B.M. See Sheet 1

SCALE: Hor. 1"=20'
Ver. 1"=5'



Sewer Sta. + Street Plan Sta +100

