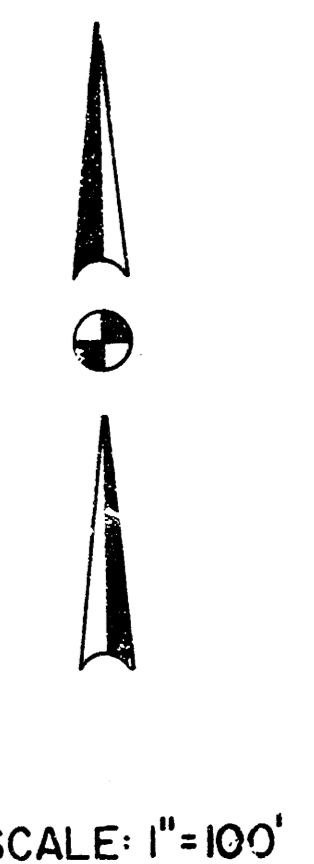
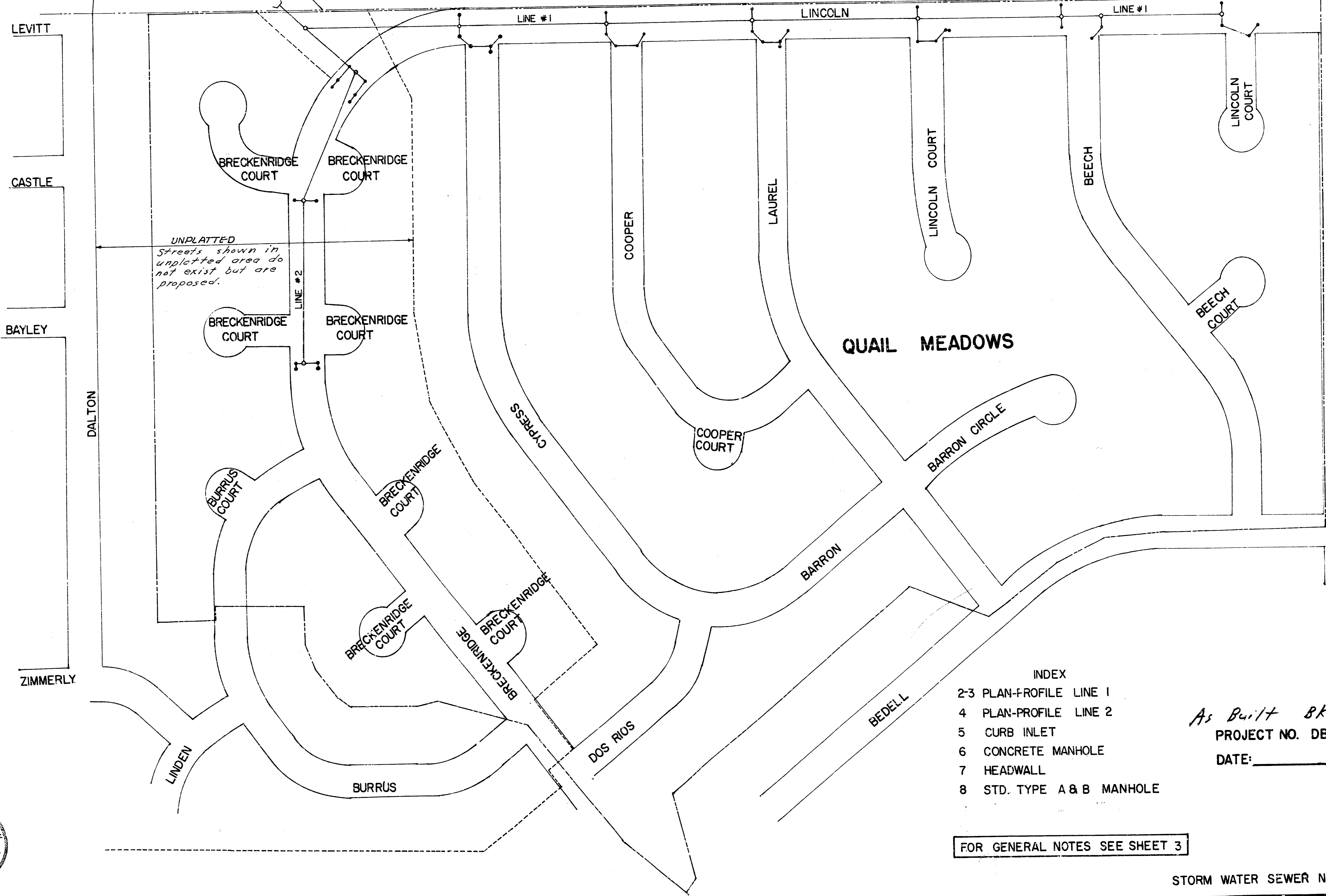


STORM WATER SEWER NO. 108

CITY OF WICHITA, KANSAS

R. W. LINN, CITY ENGINEER



SCALE: 1"=100'

- INDEX
- 2-3 PLAN-PROFILE LINE 1
 - 4 PLAN-PROFILE LINE 2
 - 5 CURB INLET
 - 6 CONCRETE MANHOLE
 - 7 HEADWALL
 - 8 STD. TYPE A & B MANHOLE

As Built BK. 289 Y
 PROJECT NO. DBKA574016
 DATE: _____

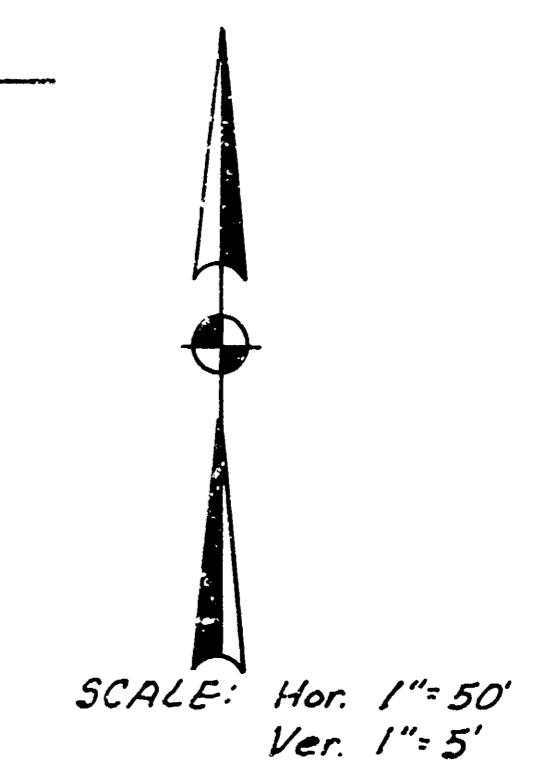
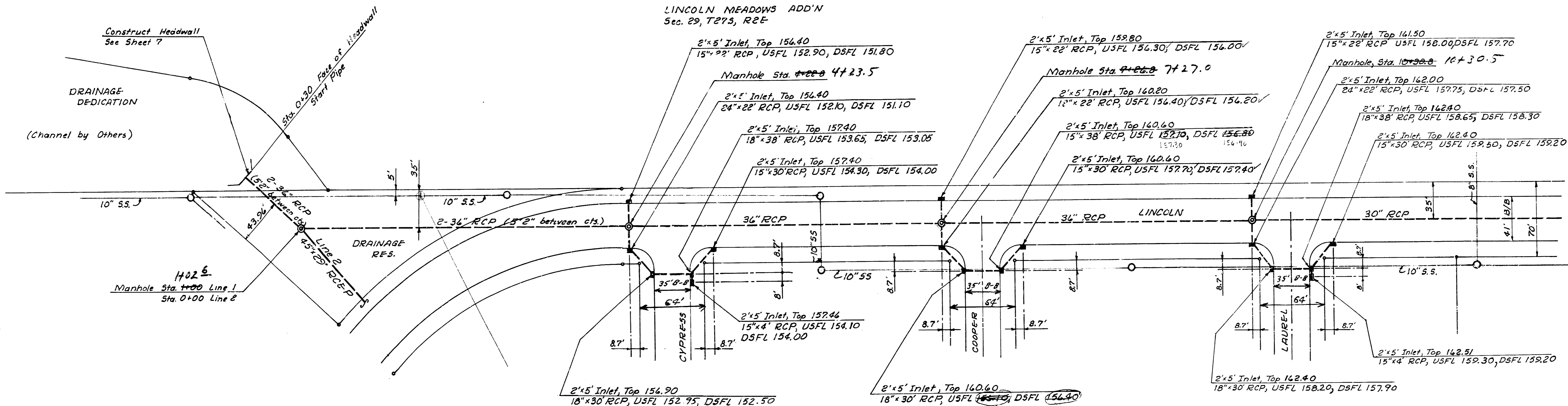
FOR GENERAL NOTES SEE SHEET 3



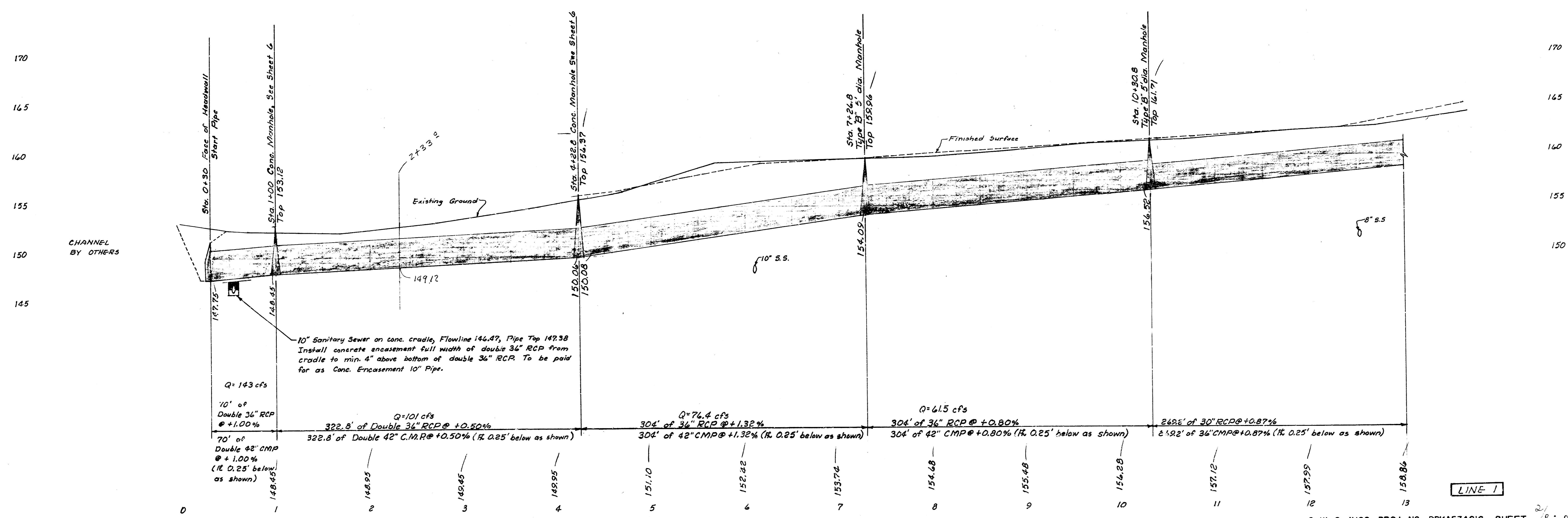
BM 141.75 RR Spike & Face Light Pole
SW Cor. Lincoln & Dalton

LINCOLN MEADOWS ADD'N
Sec. 29, T27S, R2E

QUAIL MEADOWS ADD'N
Sec. 29, T27S, R2E



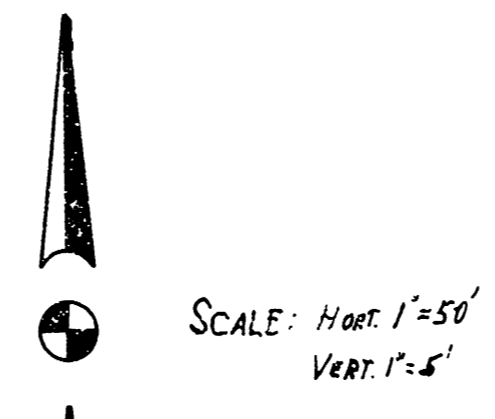
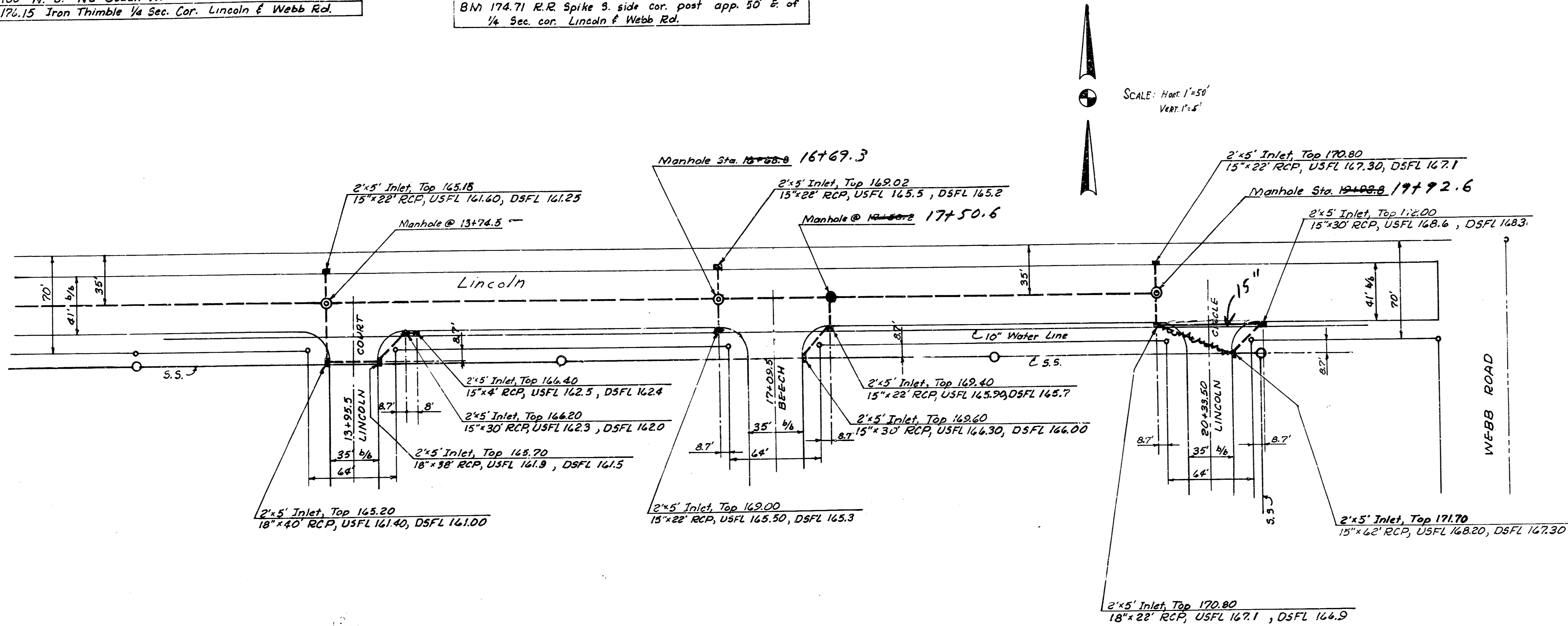
NOTE: All inlet at set-back location



LINE 1

BM 184.40 R.R. Sph. Top 2" guard pole E. side Webb Rd. app.
100' N. of N.L. Bedell W.
BM 176.15 Iron Thimble 1/4 Sec. Cor. Lincoln & Webb Rd.

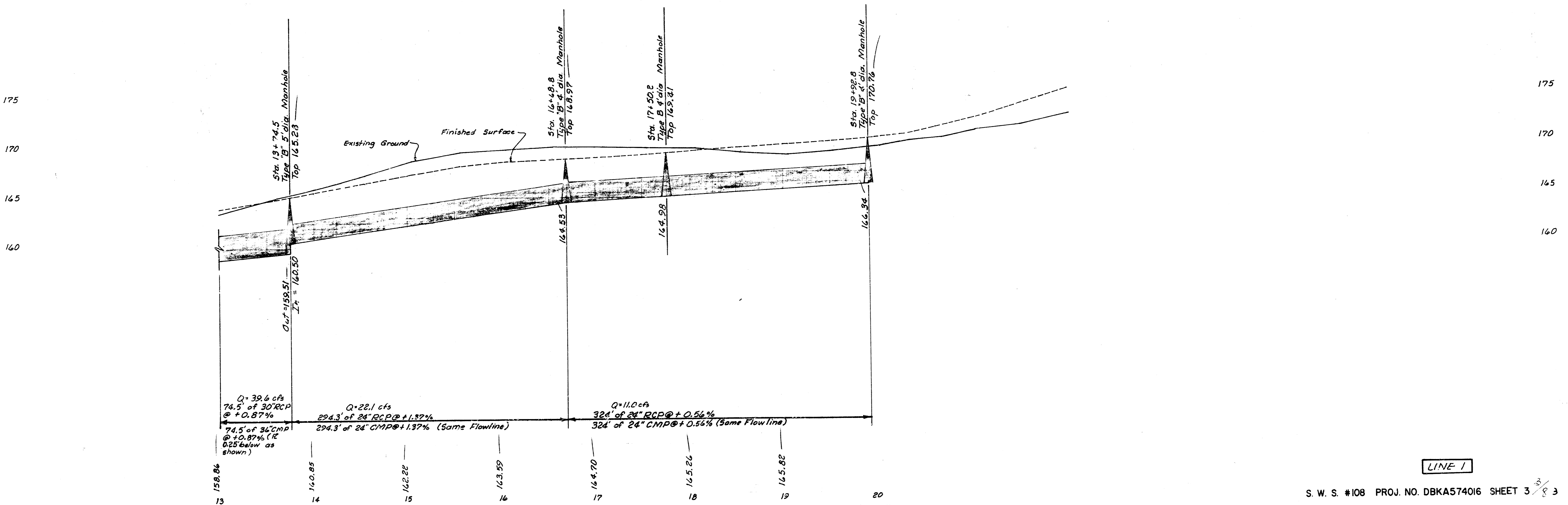
BM 172.03 Webb Rd & Harry Cofw B.M. Disc 48" dia.
& 4' W. of E. bath.
BM 174.71 R.R. Spike S. side cor. post app. 50' E. of
1/4 Sec. cor. Lincoln & Webb Rd.



GENERAL NOTES

1. THE PRICE BID FOR CLEARING RIGHT OF WAY SHALL INCLUDE ALL COST FOR WORK NECESSARY TO CLEAR THE RIGHT OF WAY TO FACILITATE CONSTRUCTION OF THE STORM SEWER. TREES NOT SHOWN ON THE PLAN AND THE CONTRACTOR WILL BE REQUIRED TO INSPECT THE SITE TO DETERMINE THE EXTENT OF TREE REMOVAL. ALL TREES NOT IN CONFLICT WITH CONSTRUCTION OF THE SEWER SHALL BE SAVED.
2. PIPE FURNISHED FOR THIS PROJECT SHALL EITHER BE ALL REINFORCED CONCRETE PIPE OR CORRUGATED METAL PIPE. CORRUGATED METAL PIPE SHALL CONFORM TO THE APPLICABLE SECTIONS OF SECTION 1009.05 AND SECTION 1009.07 OF THE 1973 KANSAS STATE HIGHWAY SPECIFICATIONS. CORRUGATED METAL PIPE FURNISHED FOR THIS PROJECT SHALL BE COATED IN ACCORDANCE WITH TYPE "B" OF SECTION 1009.07.
3. ALL CURB INLETS ARE TO BE CONSTRUCTED AT A SET BACK LOCATION. SEE SHEET NO. 5 FOR DETAILS. CONSTRUCTION NOTES FOR EACH INLET GIVE THE SIZE AND LENGTH OF THE OUTFLOW PIPE FROM THE INLET, THE UPSTREAM FLOW ELEVATION OF THE OUTFLOW PIPE (U.S.F.L.), AND THE DOWNSTREAM FLOW ELEVATION OF THE OUTFLOW PIPE (D.S.F.L.). FLOW ELEVATIONS SHOWN ON PLANS ARE FOR REINFORCED CONCRETE PIPE. FLOW ELEVATIONS MUST BE ADJUSTED AS INDICATED WHEN CORRUGATED METAL PIPE IS USED.
4. CONTRACTOR MUST USE SPECIAL CARE WHILE CONSTRUCTING INLETS ADJACENT TO WATERLINE OR WHILE CROSSING WATERLINE WITH STORM SEWER PIPE ON THE SOUTH SIDE OF LINCOLN.
5. MANHOLE RINGS HAVING A DIAMETER OF 50" SHALL BE USED WITH ALL 5' DIAMETER TYPE "B" MANHOLES.

NOTE: All inlets at set-back location



LINE 1

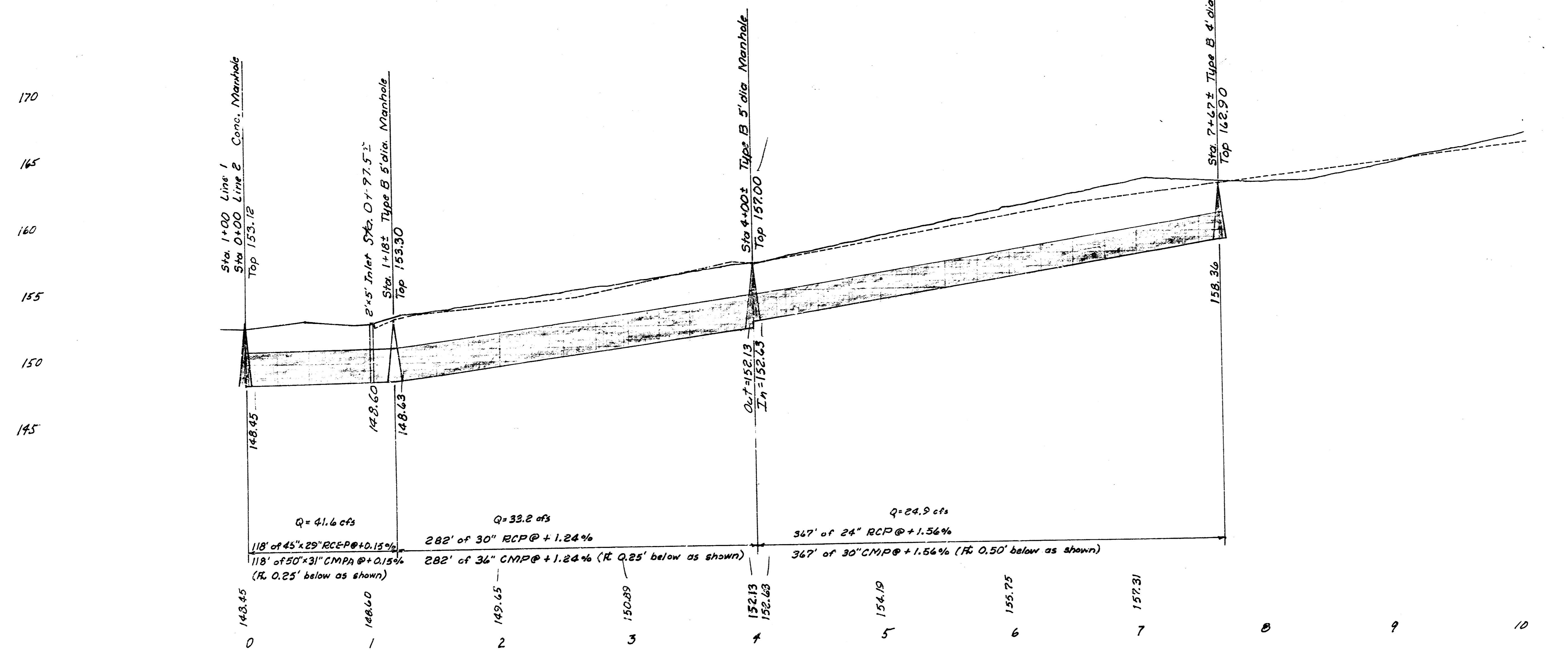
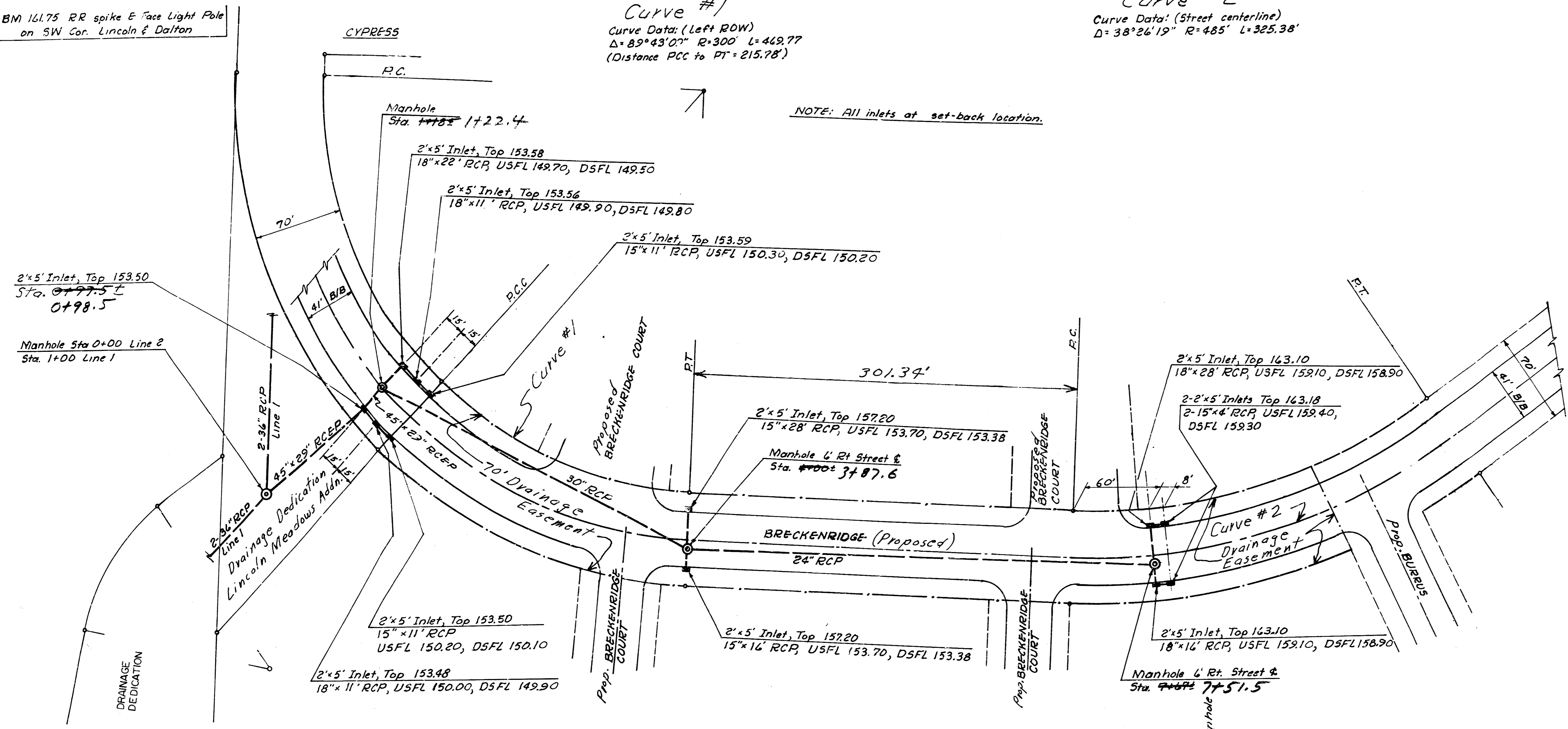
BM 161.75 RR spike & Face Light Pole
on SW Cor. Lincoln & Dalton

Curve #1
Curve Data: (Left ROW)
 $\Delta = 89^{\circ}43'07''$ $R = 300'$ $L = 469.77'$
(Distance PCC to PT = 215.78')

Curve #2
Curve Data: (Street centerline)
 $\Delta = 38^{\circ}26'19''$ $R = 485'$ $L = 325.38'$

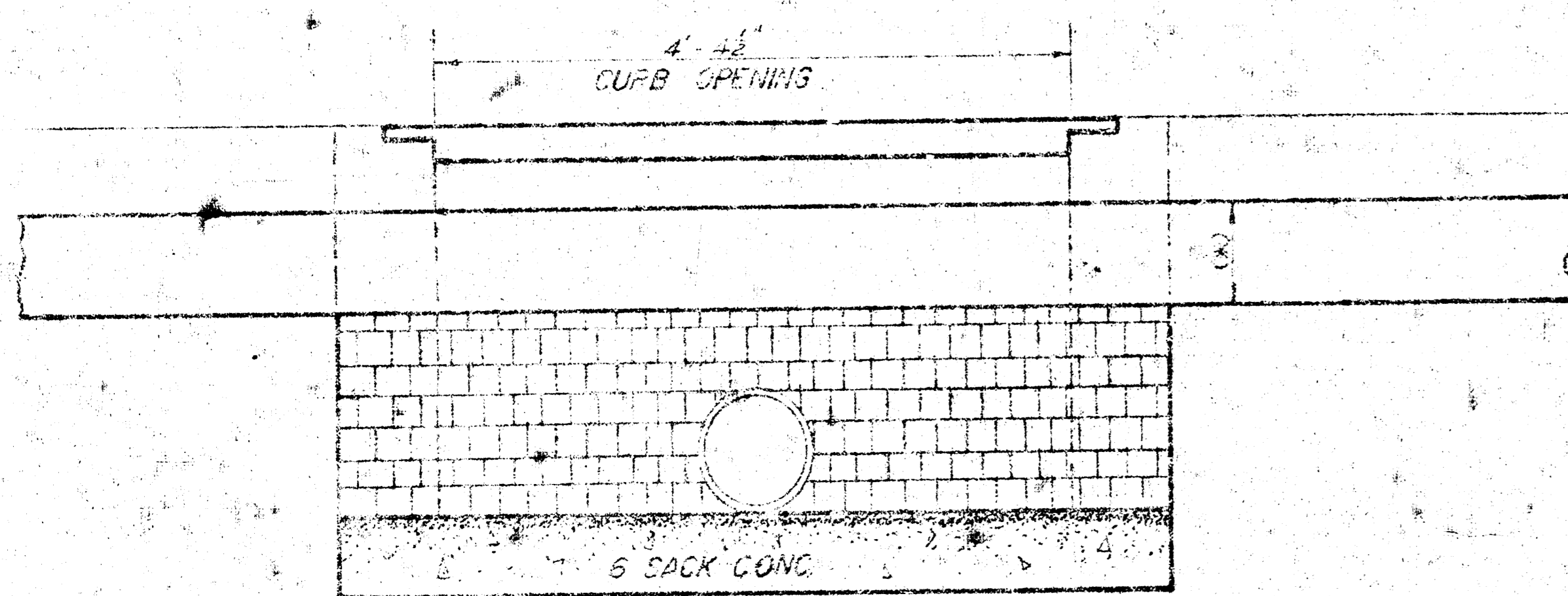
NOTE: All inlets at set-back location.

SCALE: HORT: 1"=50'
VERT: 1"=5'

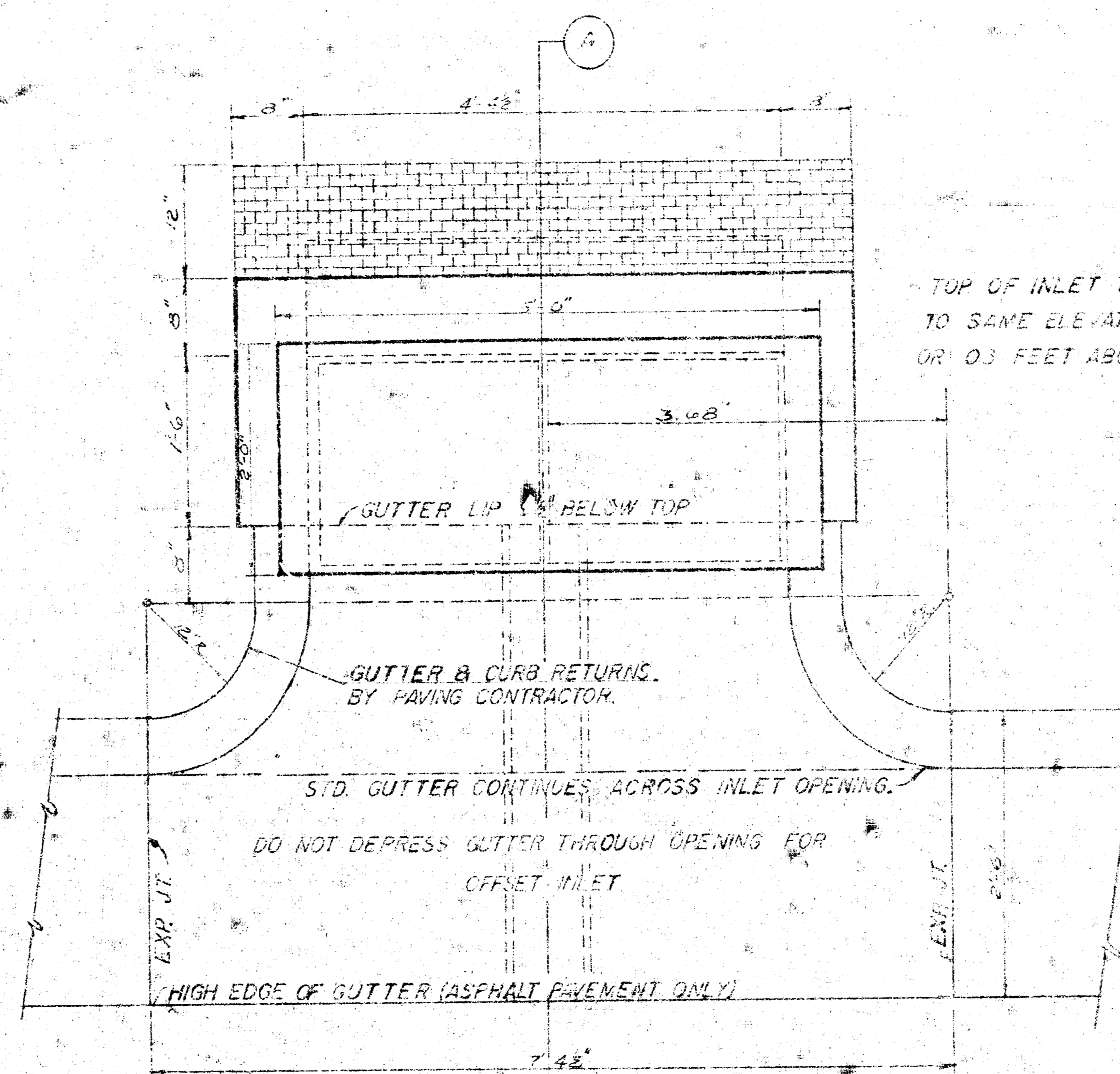


LINE 2

THIS TYPE INLET TO BE USED
WHEN PAVEMENT IS ASPHALT
PAVEMENT WITH ASPHALT
BASE COURSE AND/OR WHEN
PAVEMENTS HAVE ROLL CURB.



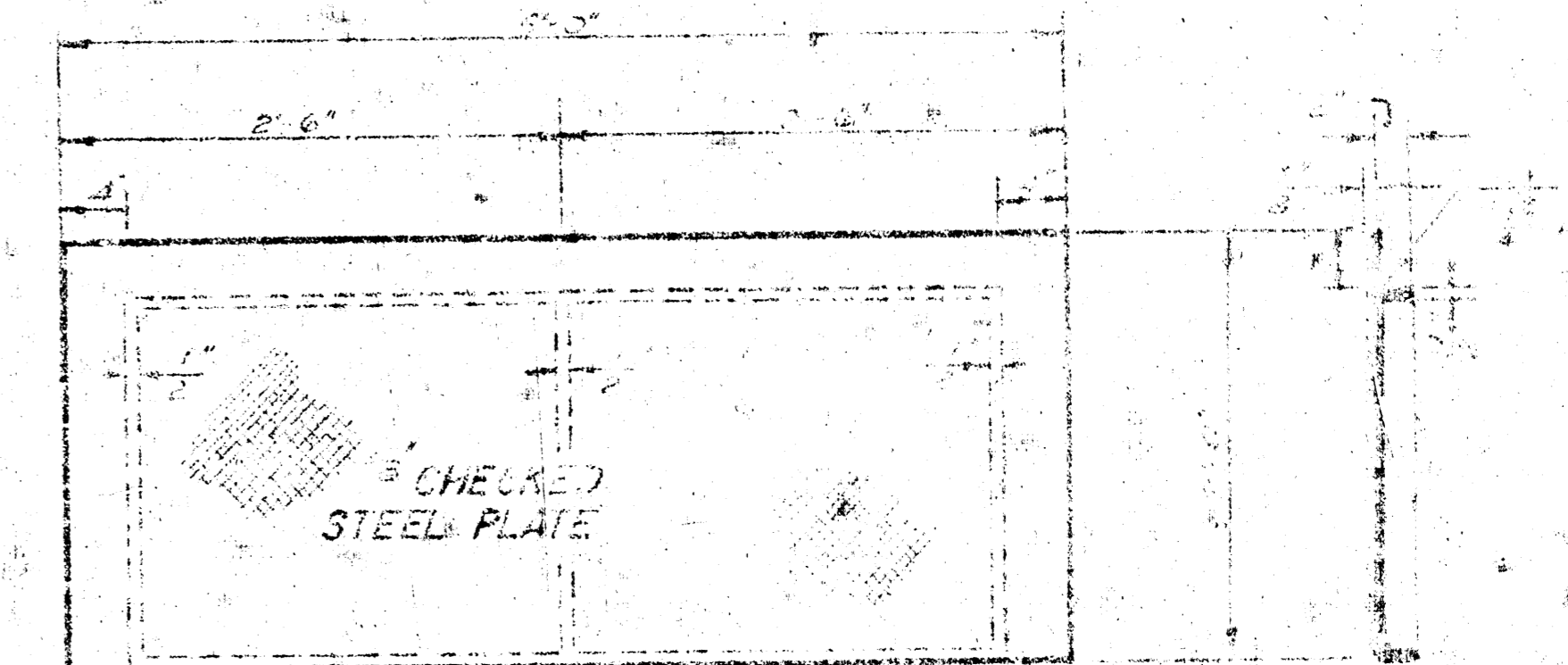
ELEVATION



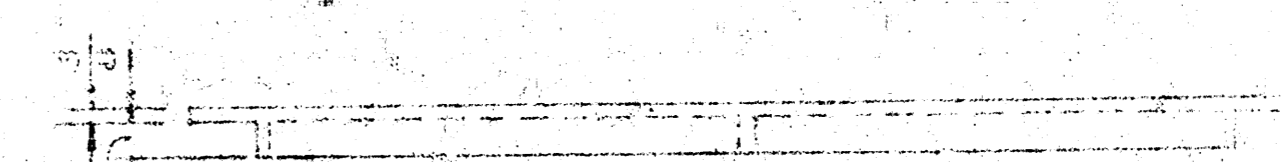
PLAN

NOTE: STRUCTURAL STEEL FOR
INLET COVER SHALL CONFORM
WITH THE LATEST REVISION OF
THE AMERICAN SOCIETY FOR
TESTING AND MATERIALS
DESIGNATION A36.

TOP OF INLET TO BE CONSTRUCTED
TO SAME ELEVATION AS STANDARD CURB
OR 0.3 FEET ABOVE ROLL CURB



PLAN SECTION

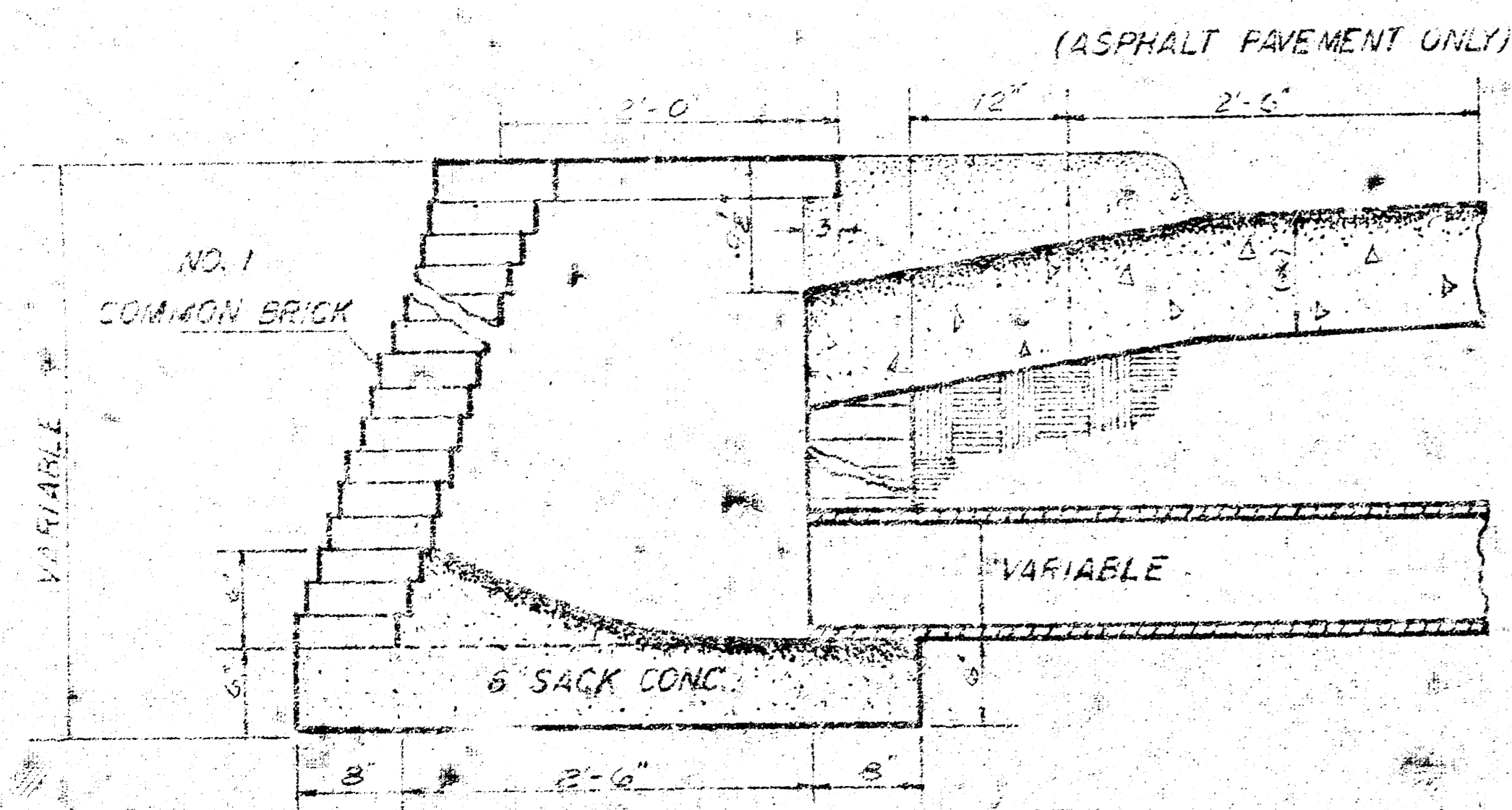


ELEVATION

CITY OF WICHITA
STEEL INLET COVER
WEIGHT = 206 LBS.
SHOP PAINT = BLACK ASPH
SCALE 1 1/2" = 0"

NOTE: BRICK FOR INLET CONSTRUCTION
SHALL CONFORM WITH THE LATEST
REVISION OF THE AMERICAN
SOCIETY FOR TESTING AND
MATERIALS DESIGNATION C32
FOR MANHOLE BRICK GRADE MS.

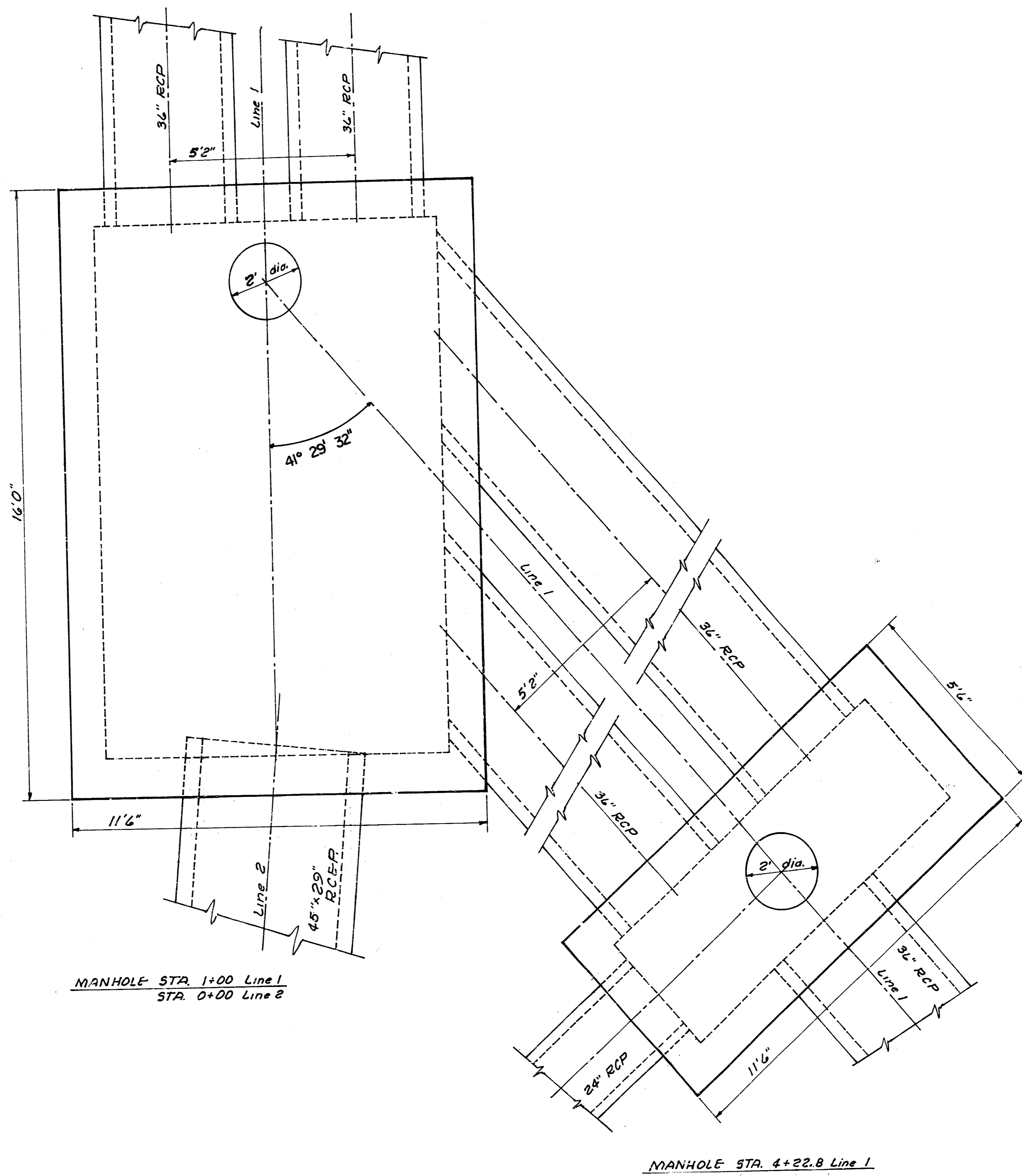
SCALE 1 1/4" = 0"

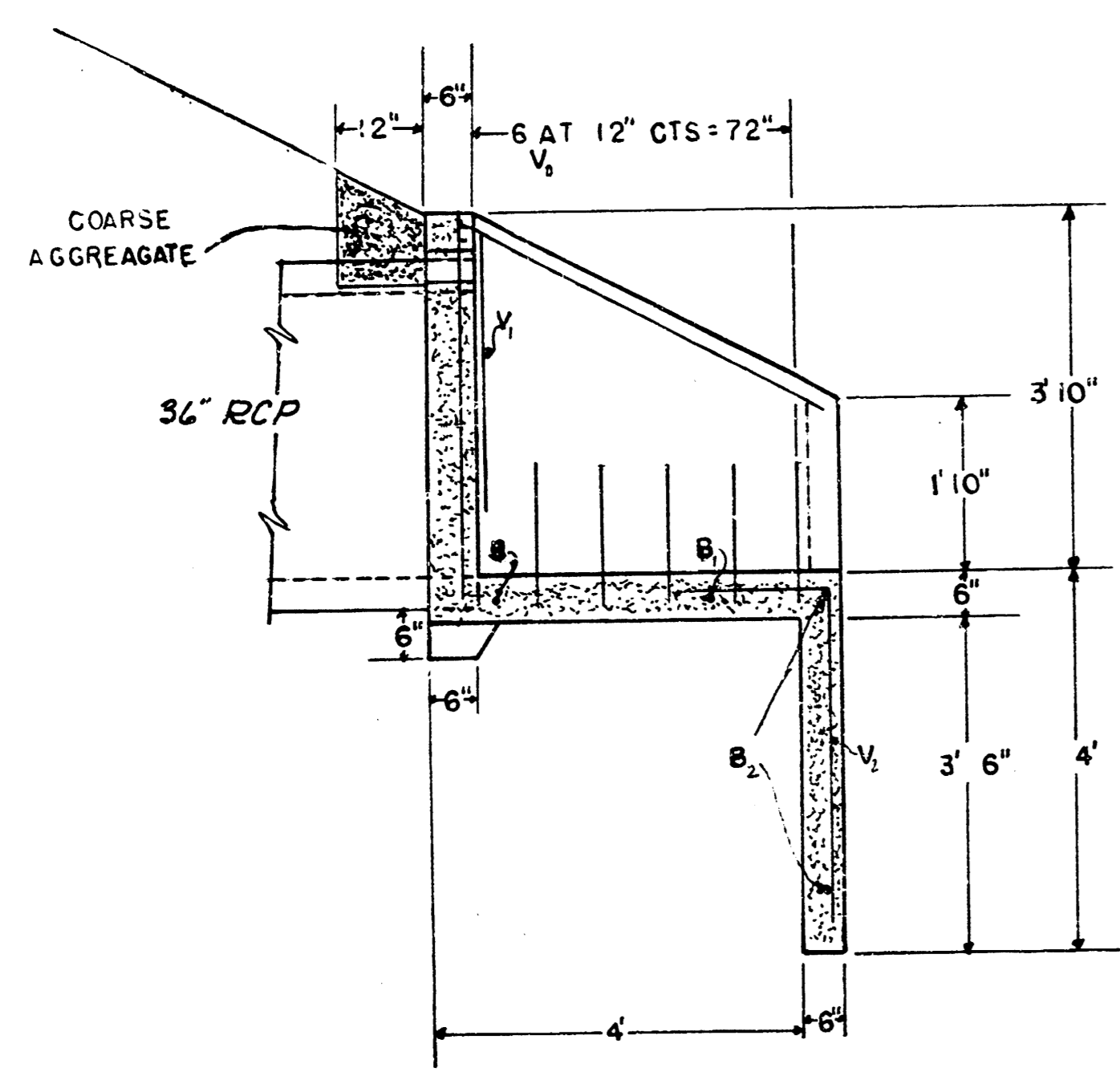


SECTION THRU INLET
2' x 5' INLET DETAIL
SCALE 1 1/4" = 0"

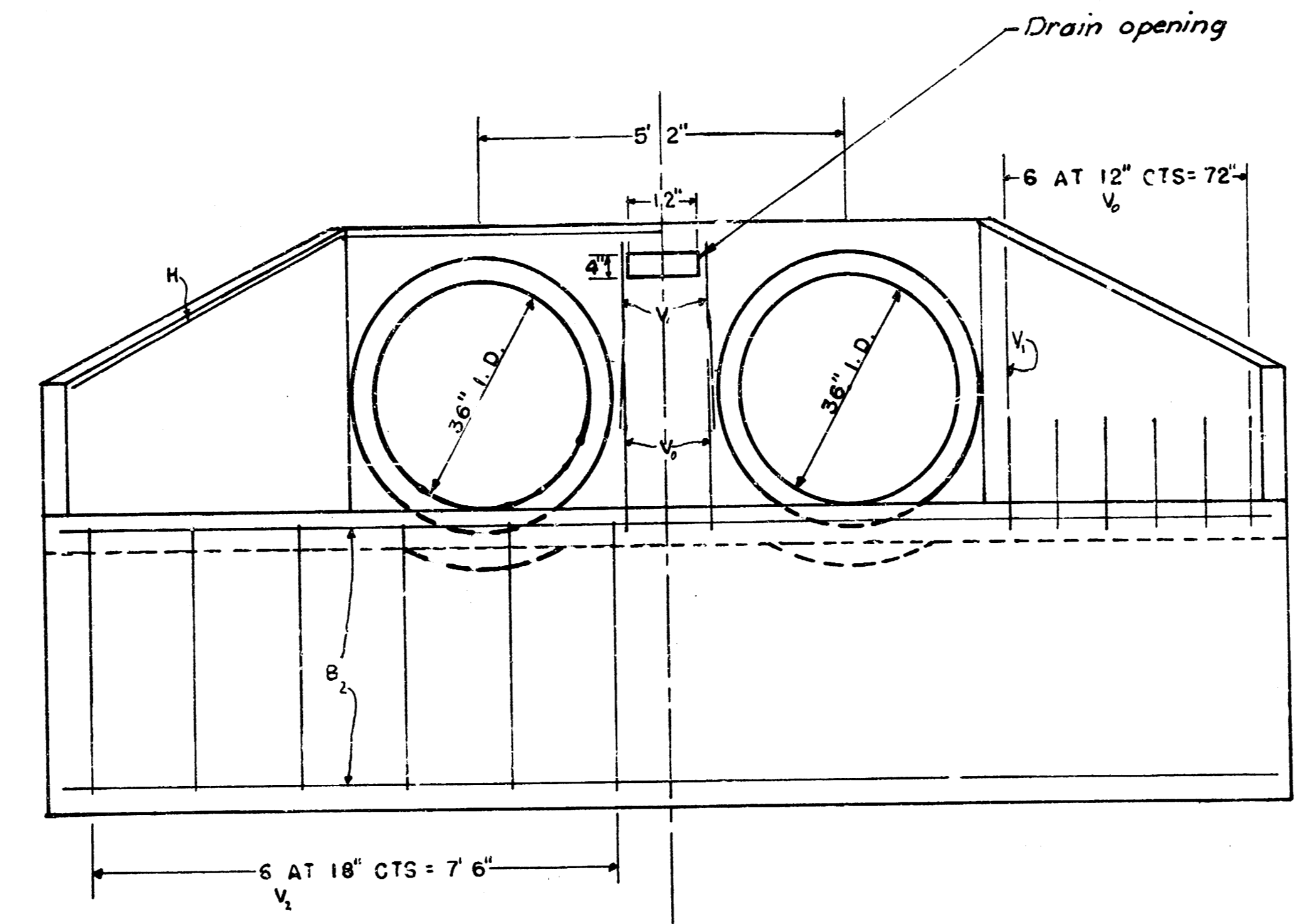
(*) CURB & GUTTER OR PAVEMENT THICKNESS

DETAIL
STANDARD 2' x 5' INLET
(SET BACK LOCATION)
CITY OF WICHITA, KANSAS
R. W. LINN CITY ENGINEER
JUNE 1974

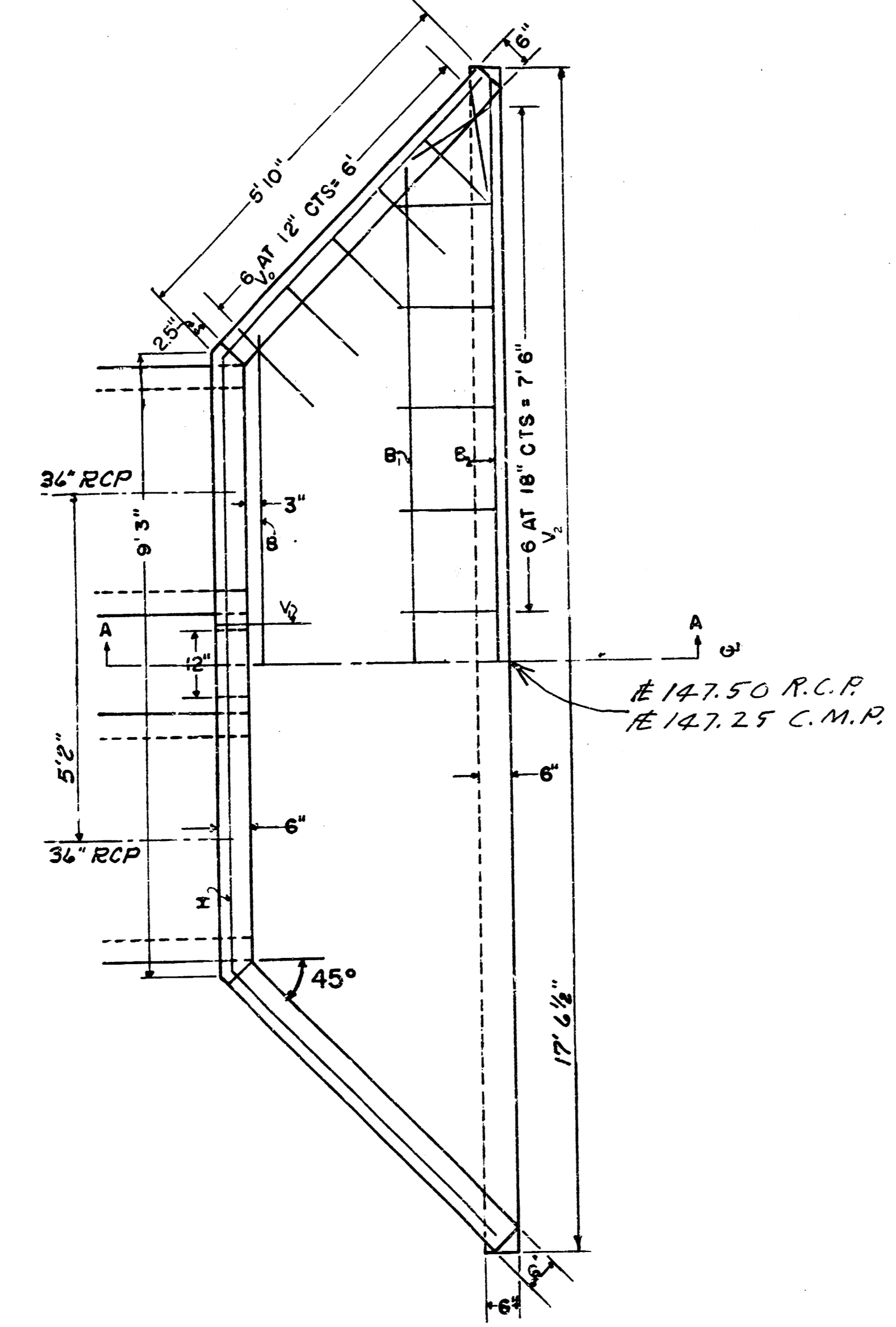




SECTION A-A



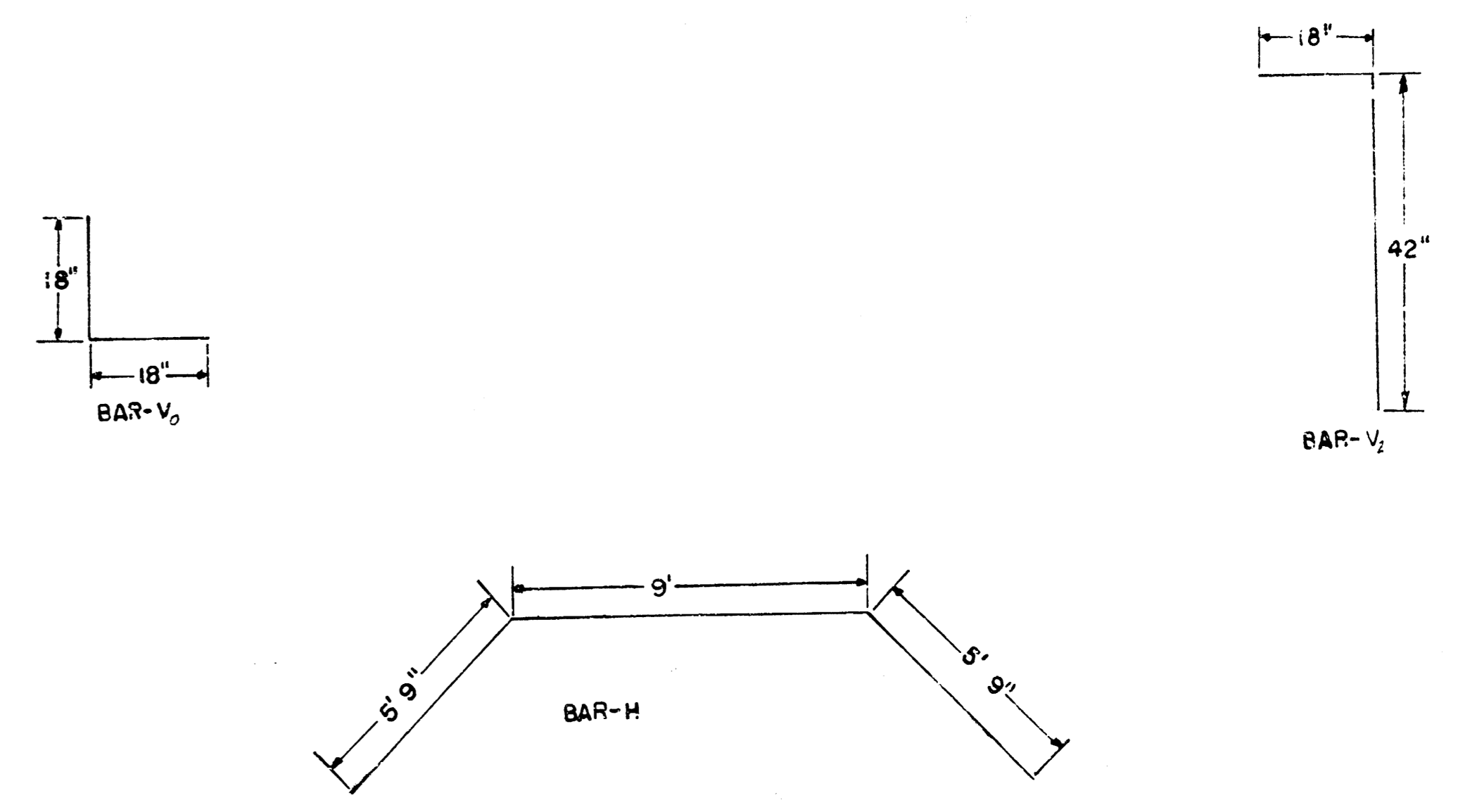
END ELEVATION



PLAN
Scale: 1/8" = 1' 0"

REINFORCED CONCRETE HEADWALL FOR
2 36" DIAMETER R.C. PIPE

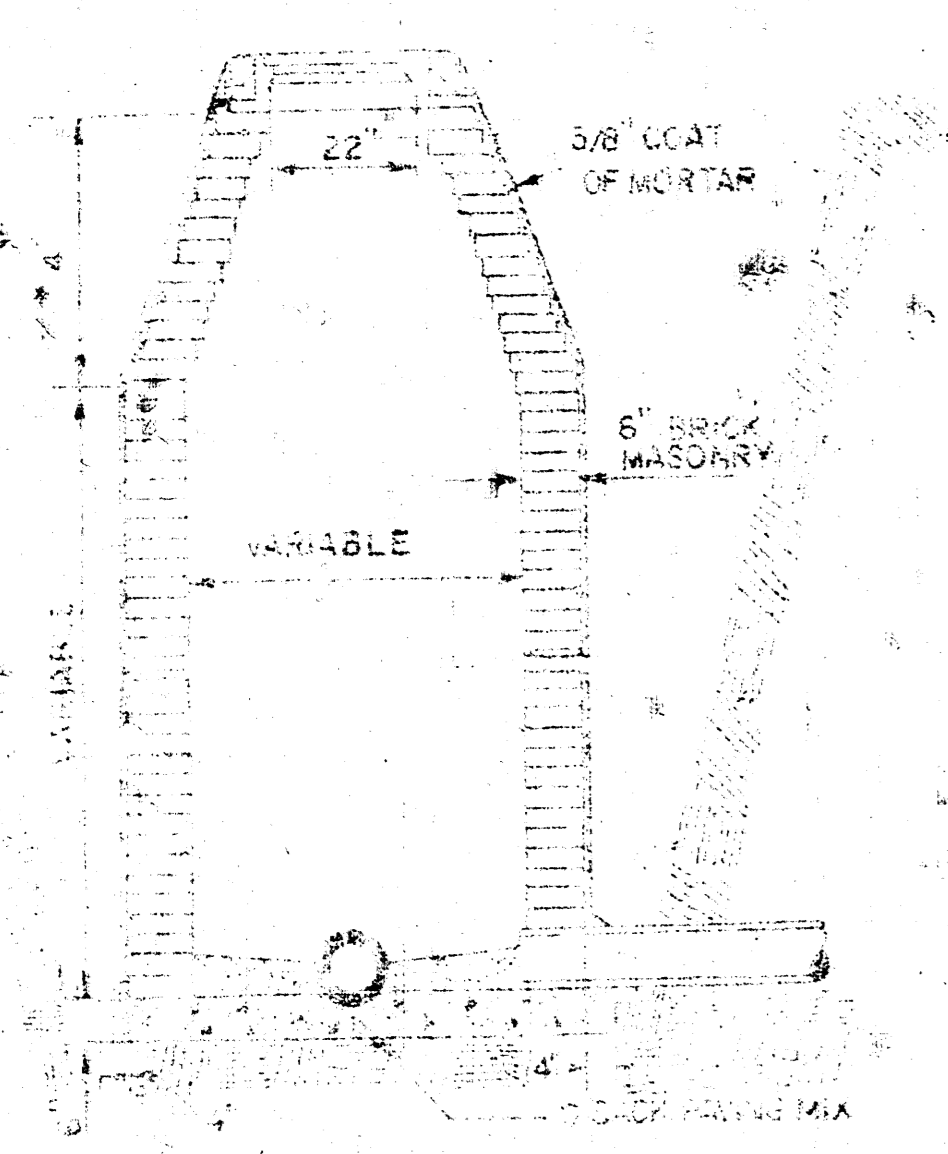
1. ALL REINFORCING STEEL SHALL BE #4 DEFORMED BAR.
2. ALL REINFORCING STEEL SHALL BE COVERED BY AT LEAST 2" OF CONCRETE.
3. IF SPLICING IS USED A LAP OF 20 DIAMETERS WILL BE USED, AT CONTRACTOR'S EXPENSE.
4. ALL CONCRETE WILL BE STANDARD PAVING MIX.
5. EMBANKMENT SLOPE ABOVE HEADWALL SHALL BE 2:1 OR FLATTER.



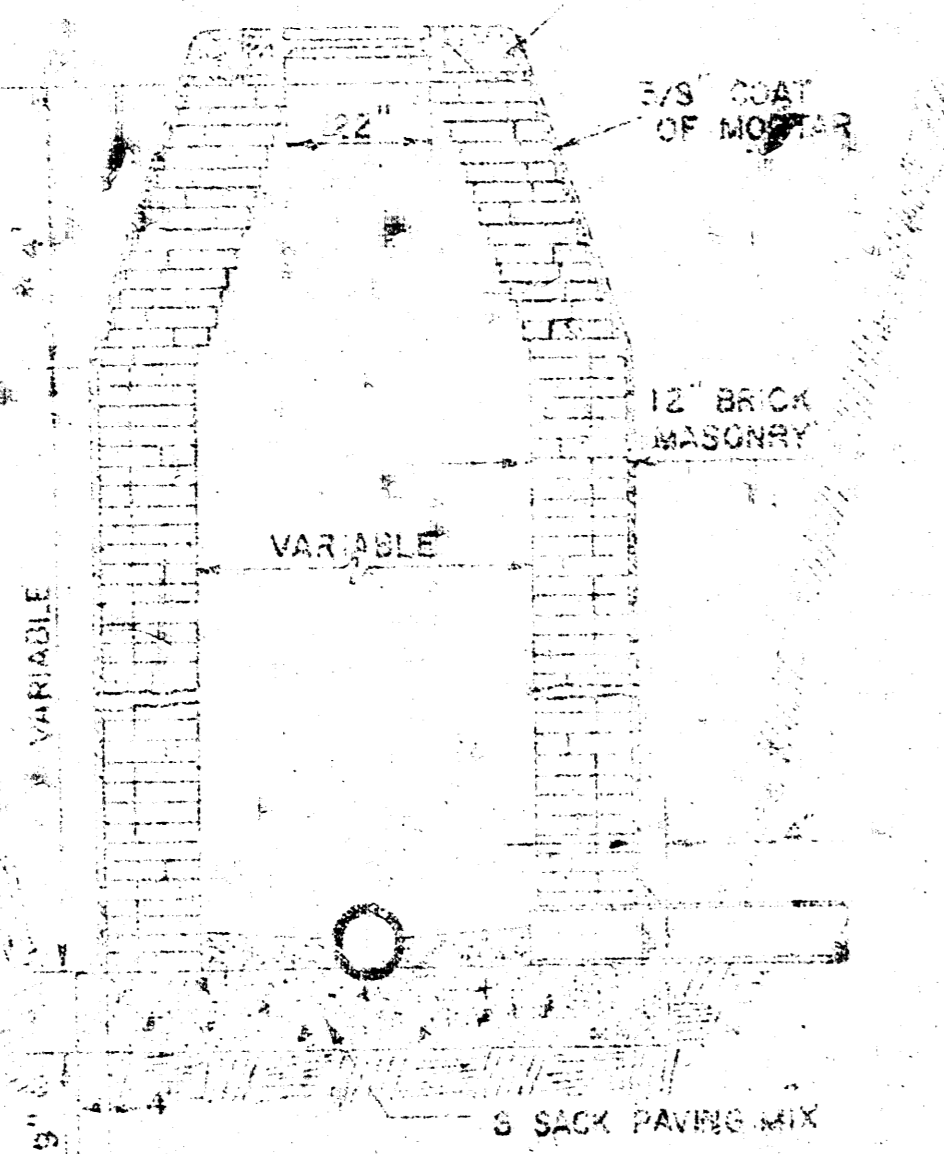
QUANTITIES

NO. OF ITEM	MATERIAL	LENGTH / ITEM	TOTAL LENGTH
3.5	CONCRETE	CU. YDS.	35 CU. YDS.
	REINFORCING STEEL	LIN. FT.	LIN. FT.
1	H-BAR	20.5	20.5
1	B-BAR	9.75	9.75
1	B-BAR	14.5	14.5
2	B-BAR	17.0	34.0
14	V-BAR	3.0	42.0
4	V-BAR	3.5	14.0
12	V-BAR	5.0	60.0
	TOTAL		195.0
		LBS/FT	LBS.
195	STEEL	0.668	131

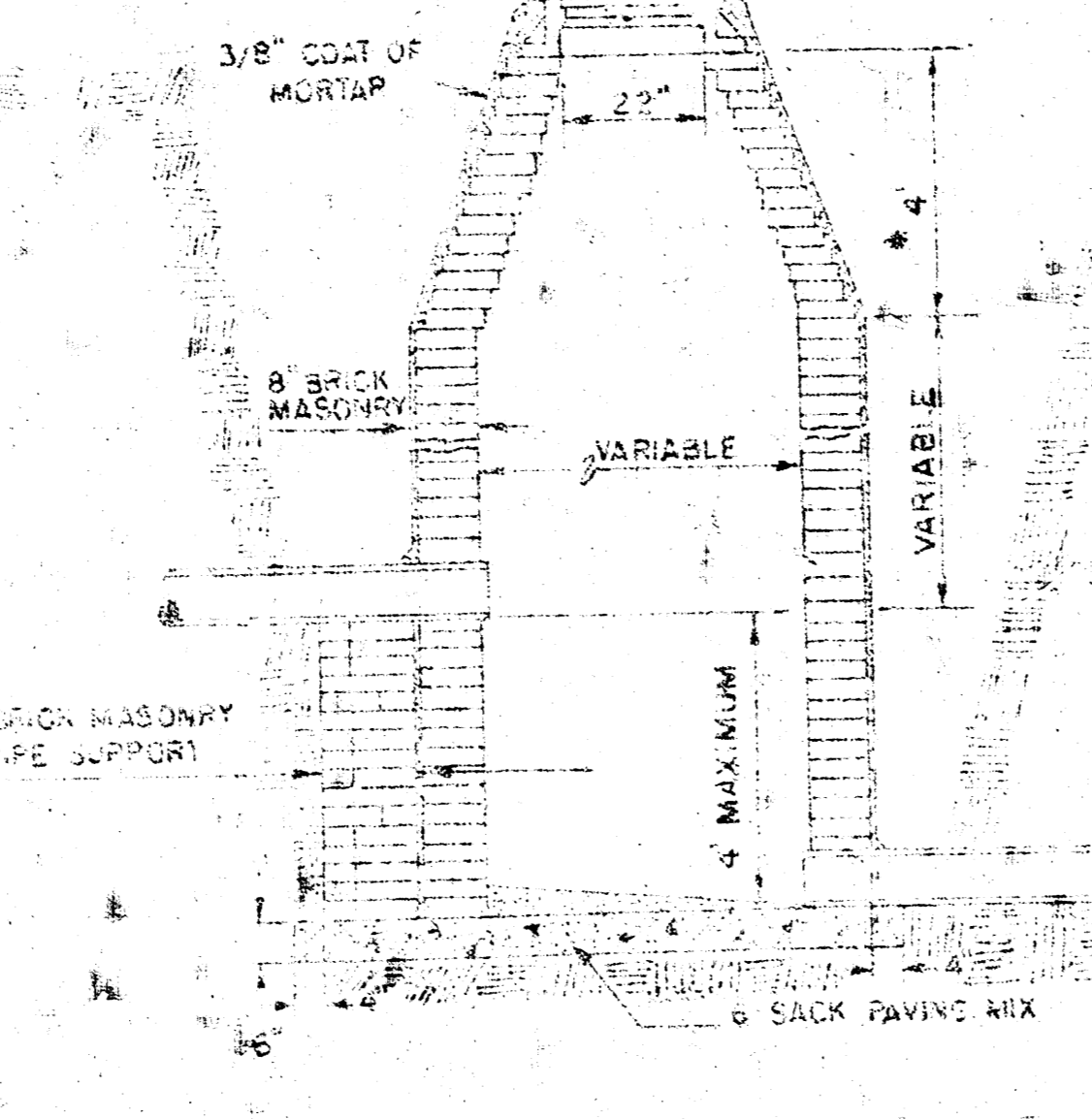
GRUNT TO BE PLACED AROUND AN HOLE RING ONLY WHEN MANHOLE IS CONSTRUCTED IN UNPAVED AREAS. (TYPICAL ALL MANHOLES)



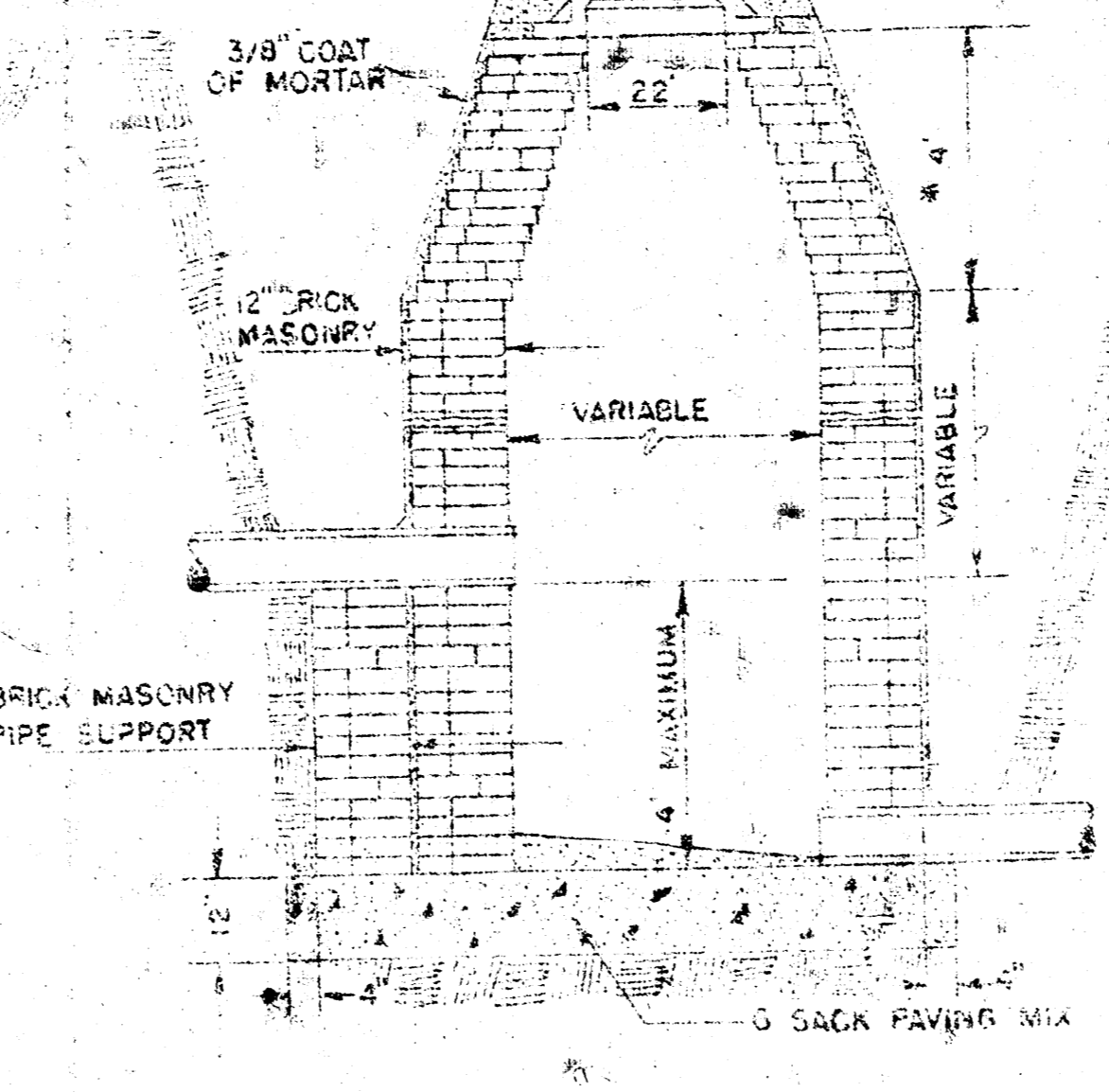
STANDARD MANHOLE TYPE "A"



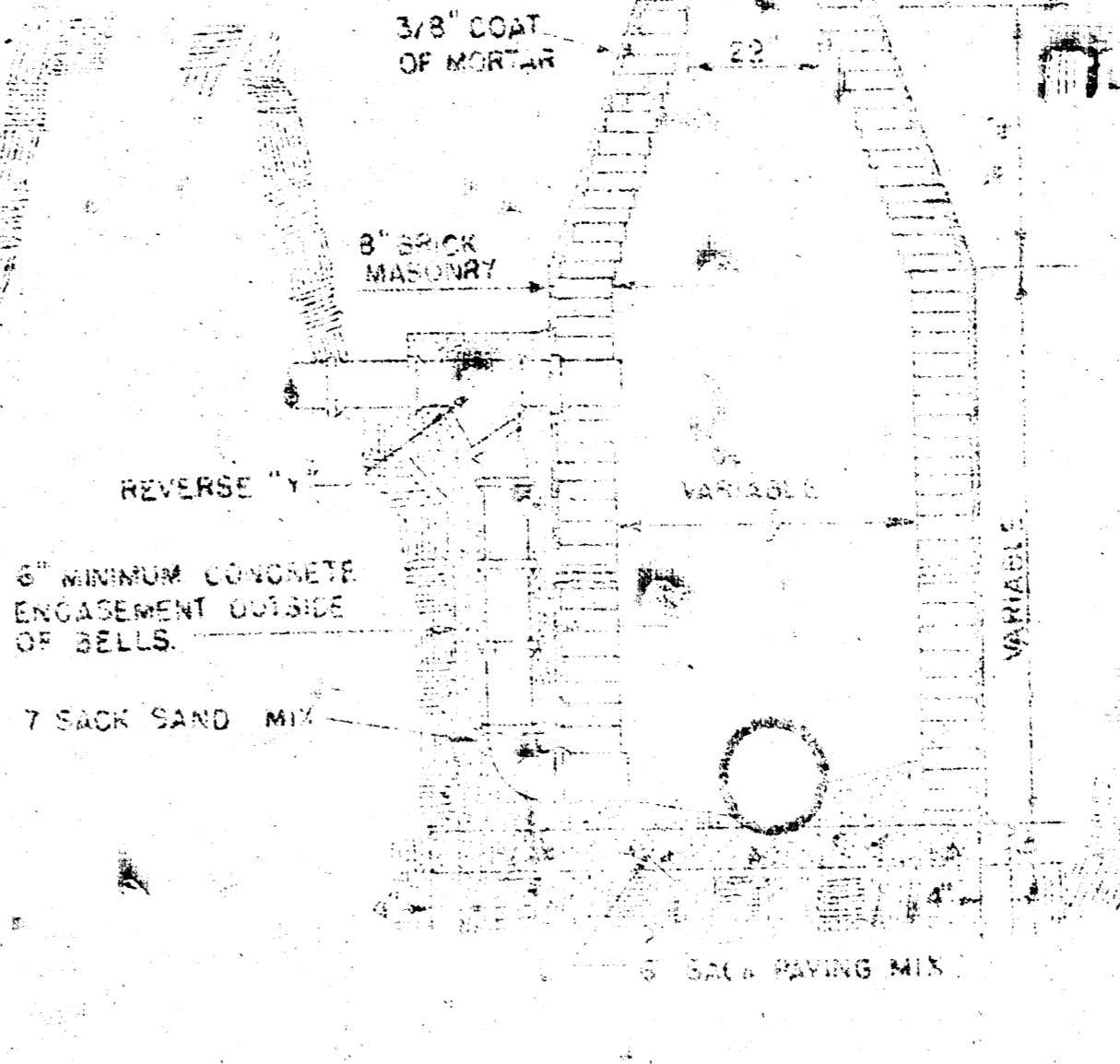
STANDARD MANHOLE TYPE "B"



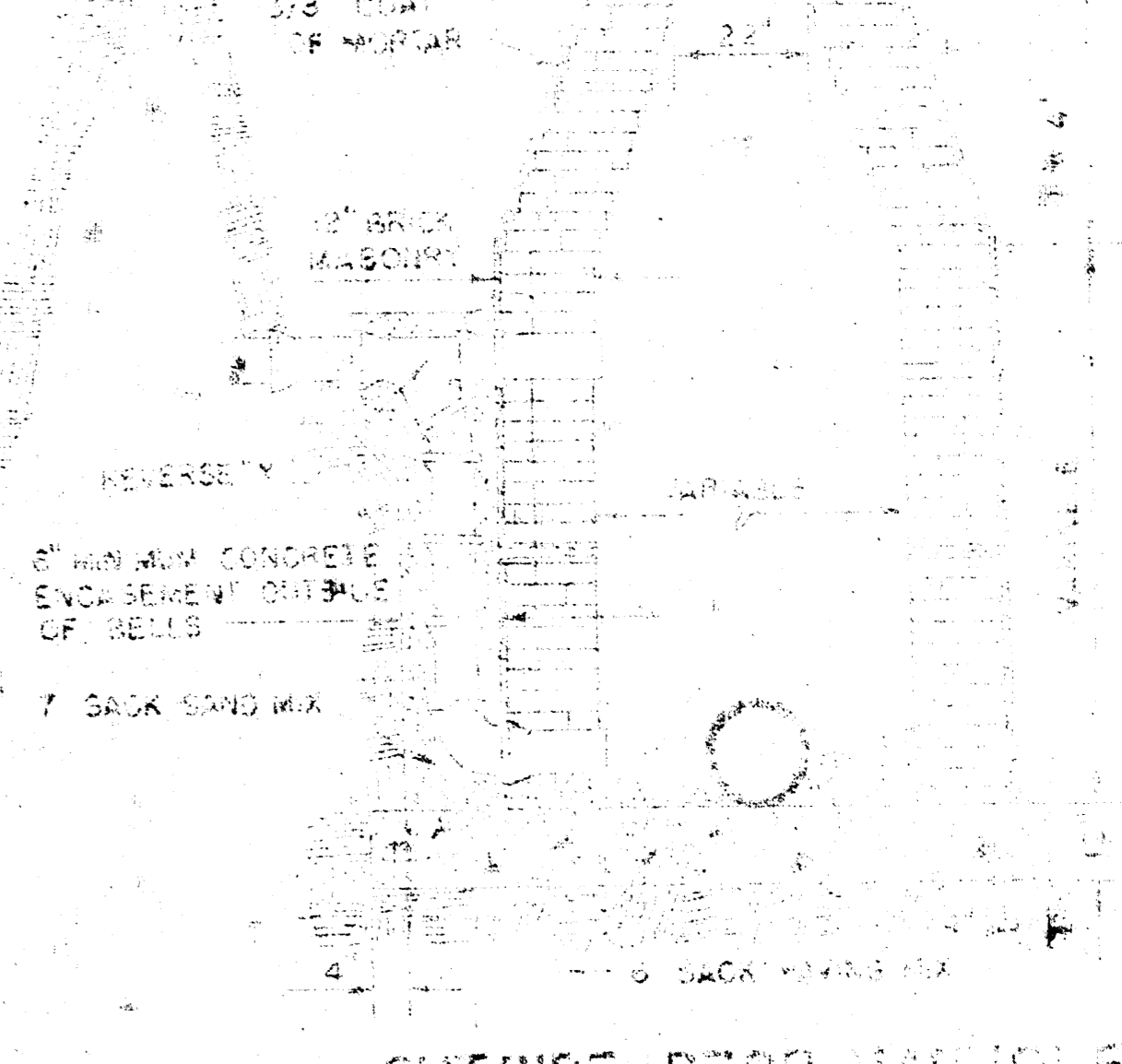
DROP MANHOLE TYPE "A"



DROP MANHOLE TYPE "B"

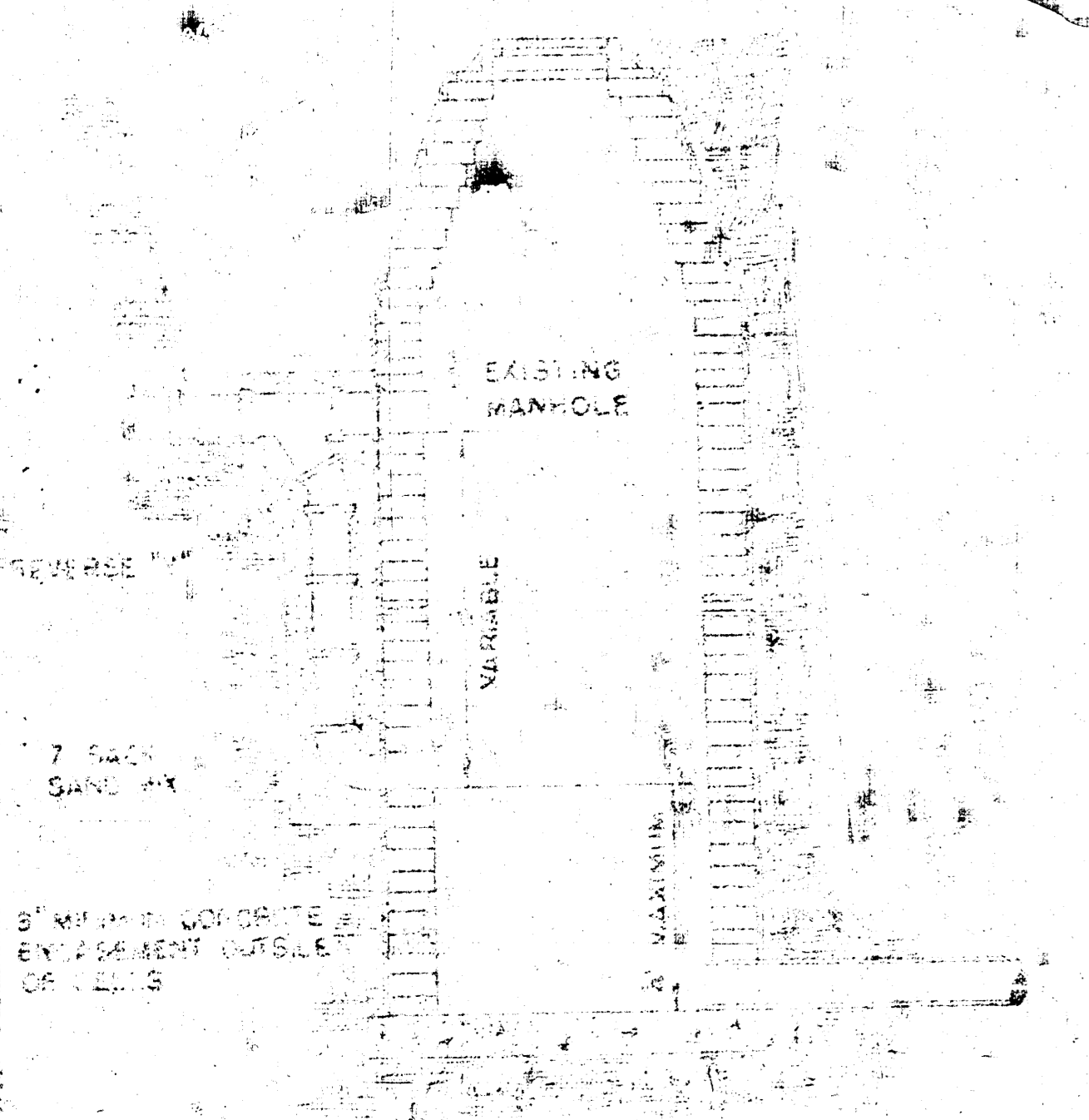


OUTSIDE DROP MANHOLE TYPE "A"

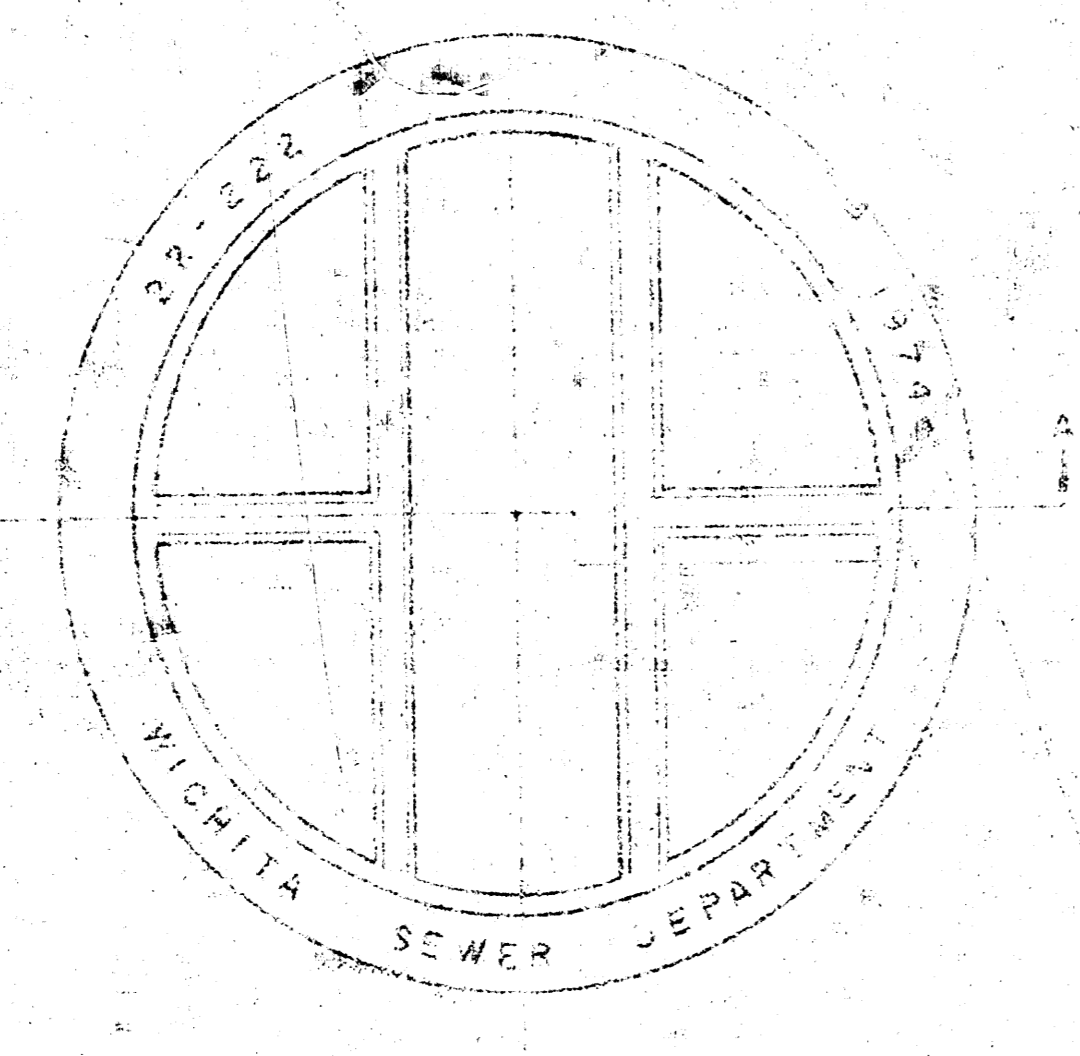


OUTSIDE DROP MANHOLE TYPE "B"

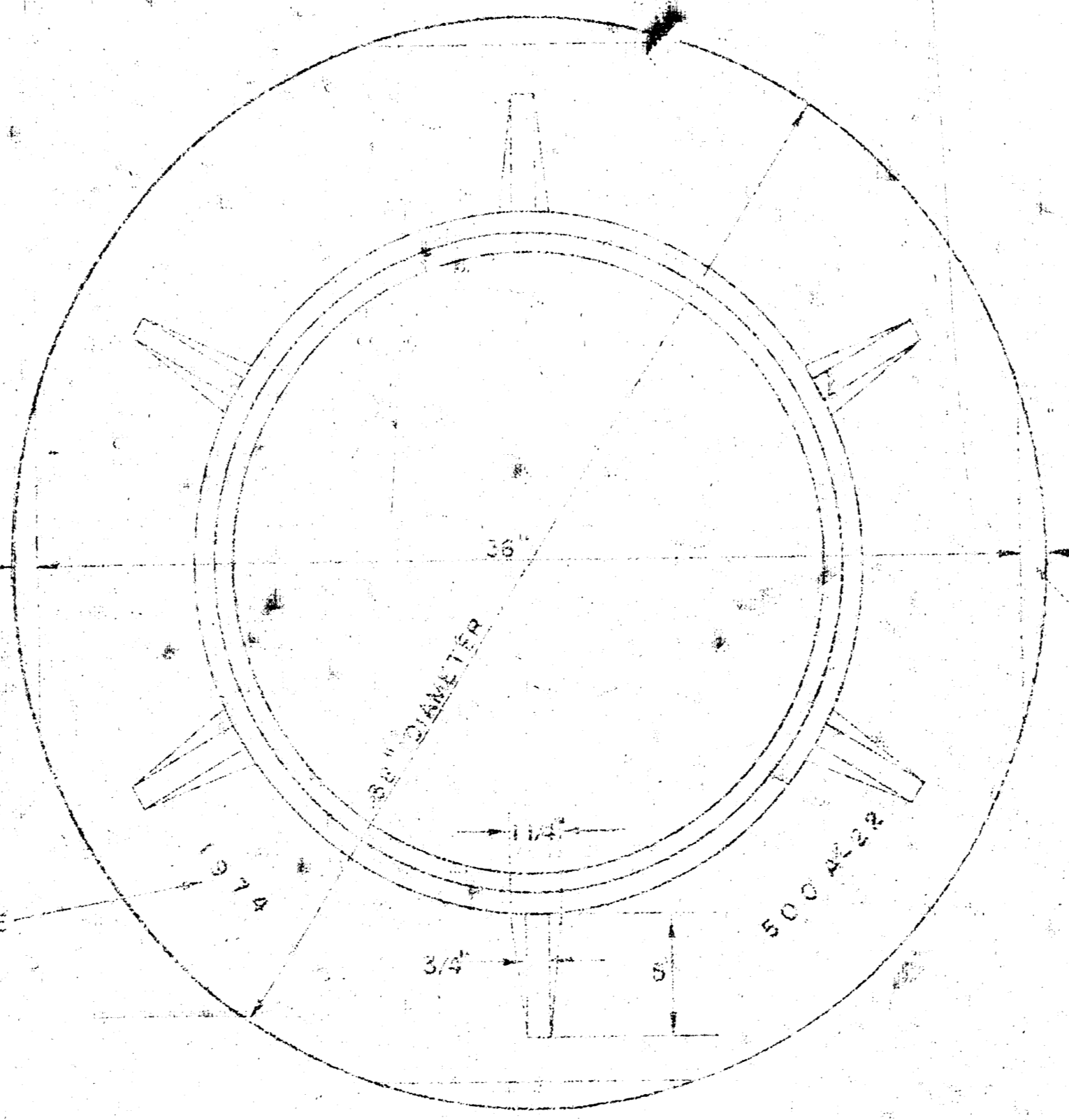
DRAW = 6" ON 5" DIA. M.H.



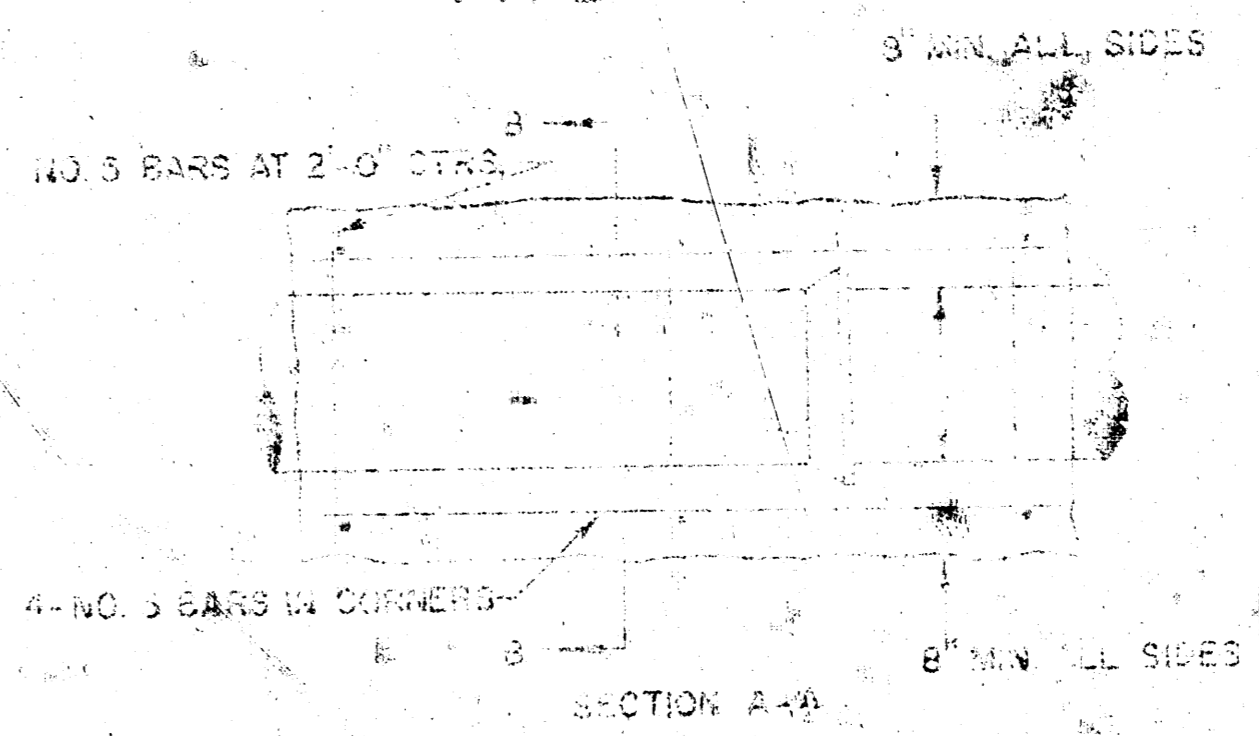
DETAIL OF DROP STACK FOR EXISTING MANHOLES IN GROUND WATER



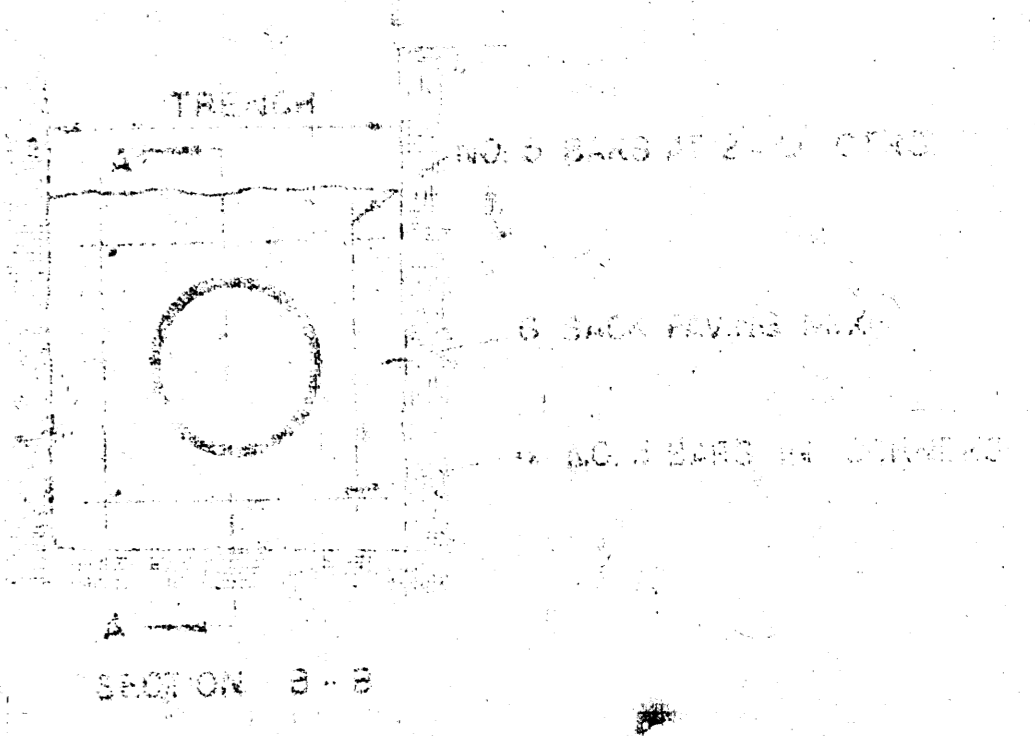
TOP VIEW MANHOLE COVER WEIGHT 10 LBS.



TOP VIEW MANHOLE RING WEIGHT 325 LBS. RING NO. 500A WEIGHT 500 LBS. RING NO. 500AS

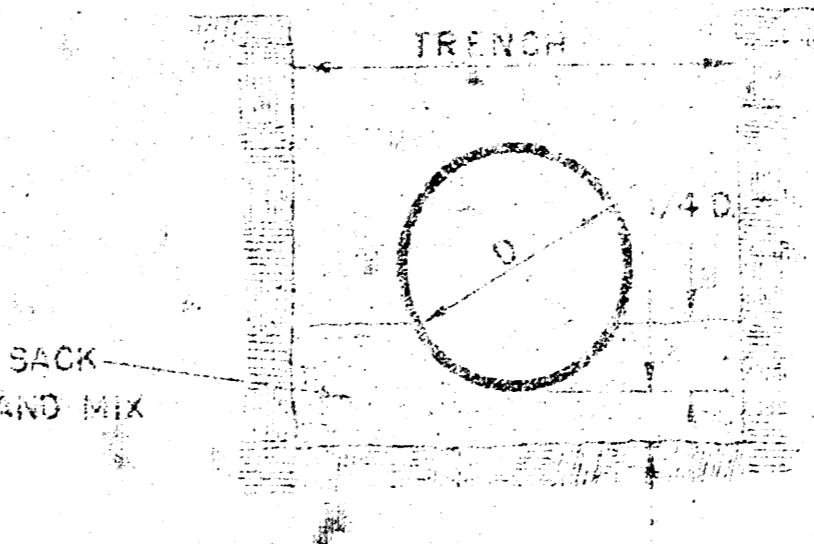


REINFORCED CONCRETE ENCASMENT FOR STRENGTH



CONCRETE ENCASMENT FOR COVER

THIS PORTION OF RANGE MAY BE OMITTED

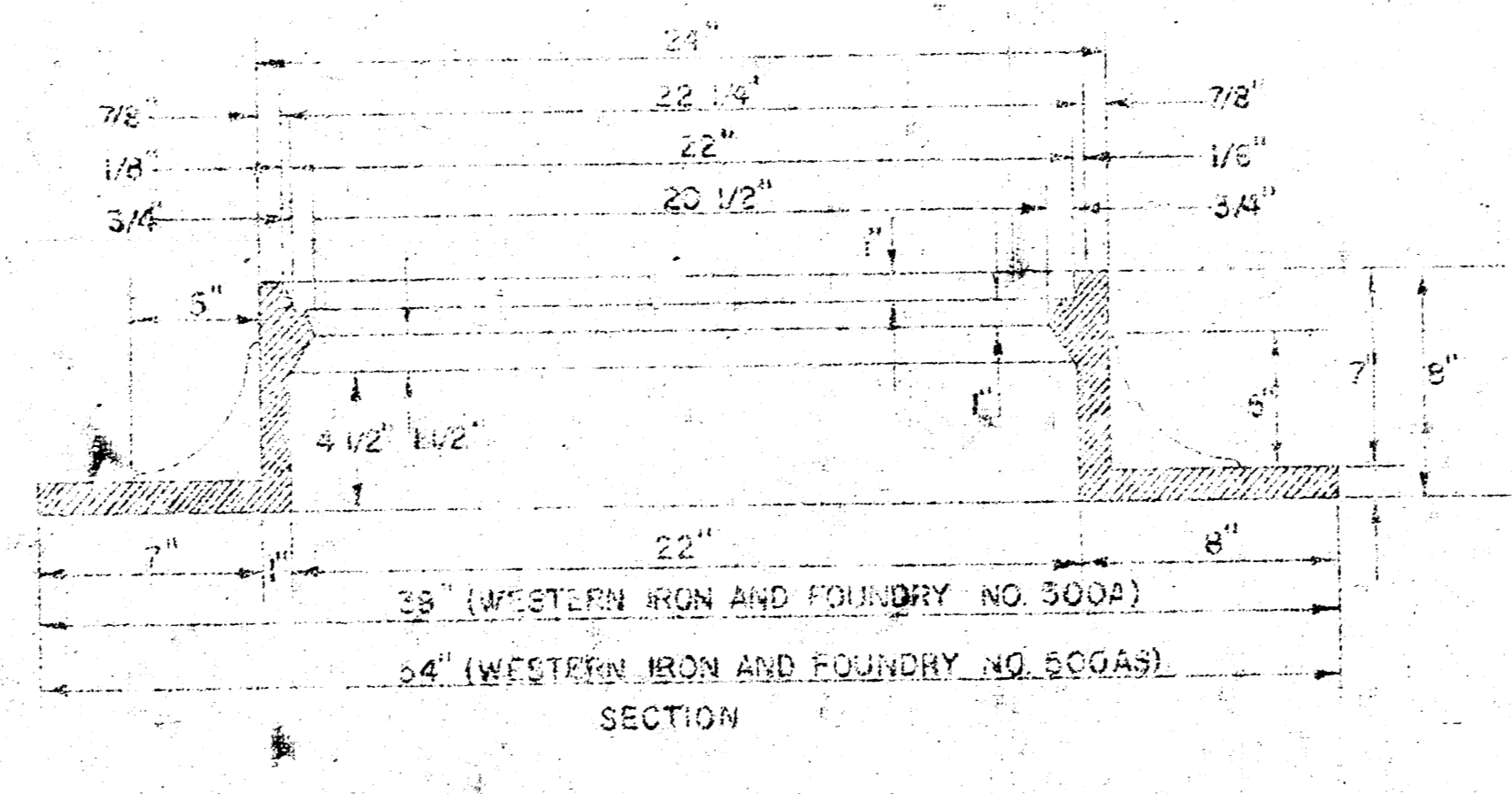


DETAIL OF CONCRETE GRADE

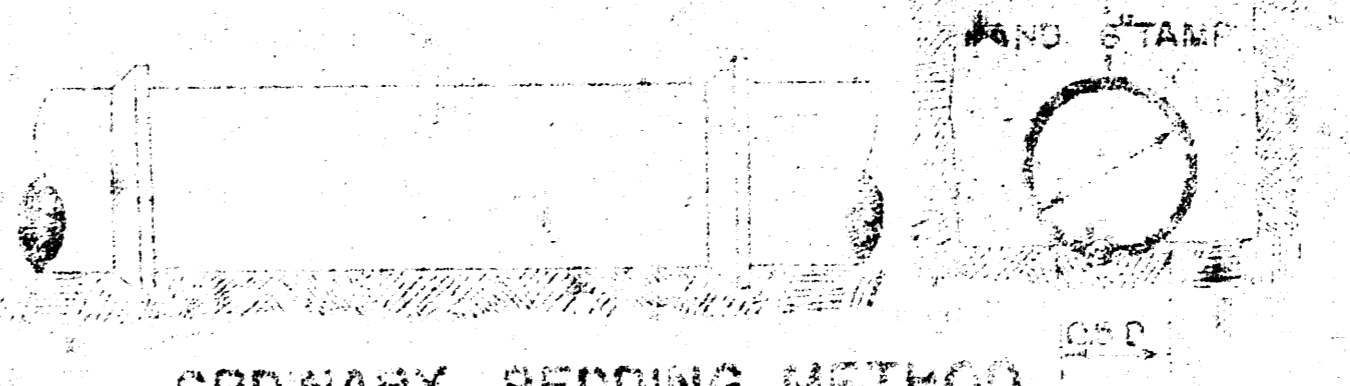
8" MIN. ALL SIDES

8" MIN. ALL SIDES

ORDINARY BEDDING METHOD FOR CLAY PIPE



SECTION MANHOLE RING OUTSIDE CIRCUMFERENCE OF COVER AND THE INNER SEAT OF RING TO BE MACHINE FIT



ORDINARY BEDDING METHOD FOR REINFORCED CONCRETE PIPE

GENERAL NOTES

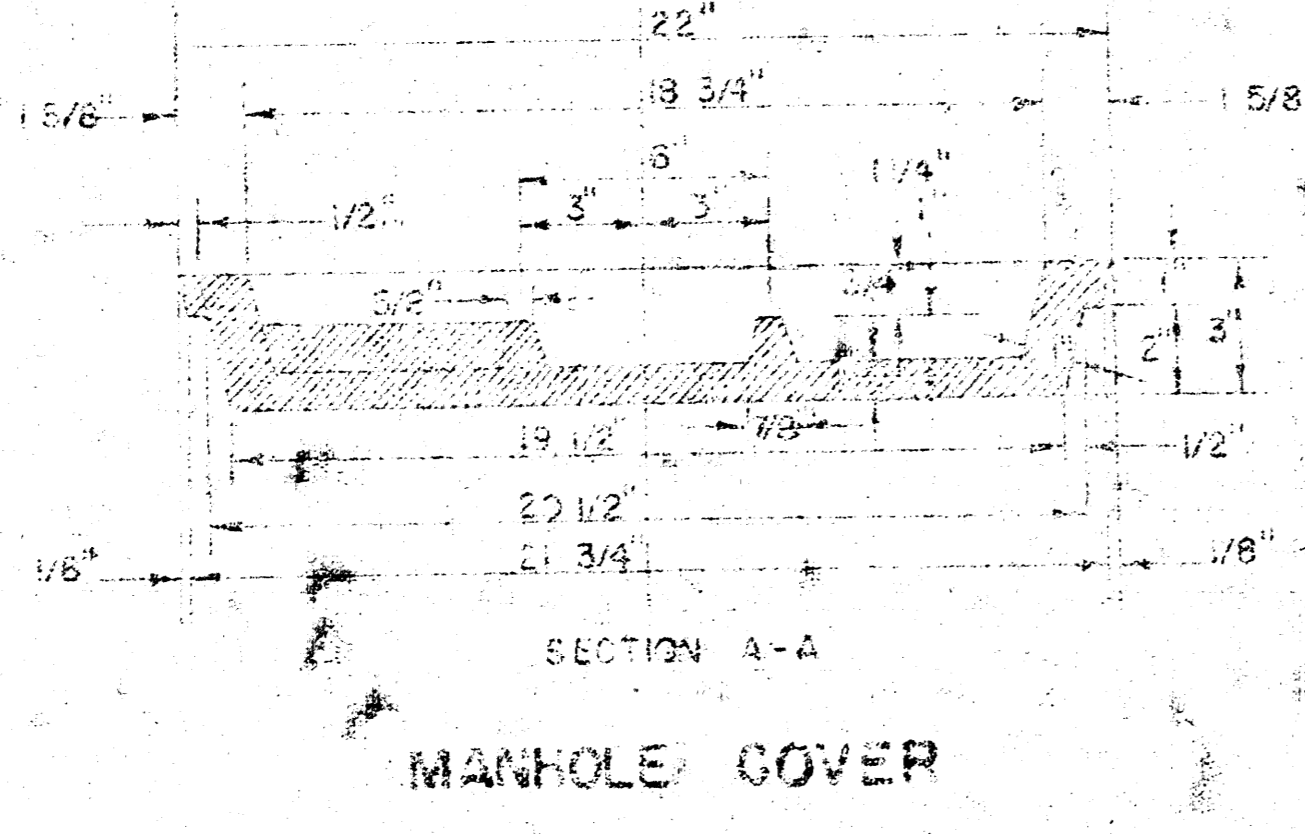
1. MASONRY USED IN MASONRY CONSTRUCTION SHALL CONTAIN 5 BAGS OF CEMENT PER CUBIC YARD.

2. STANDARD MANHOLES TYPE "A" OR TYPE "B" AND STANDARD DROP MANHOLES TYPE "A" OR TYPE "B" SHALL BE BID AS STANDARD MANHOLES FOR THE TYPE AND DIAMETER INDICATED.

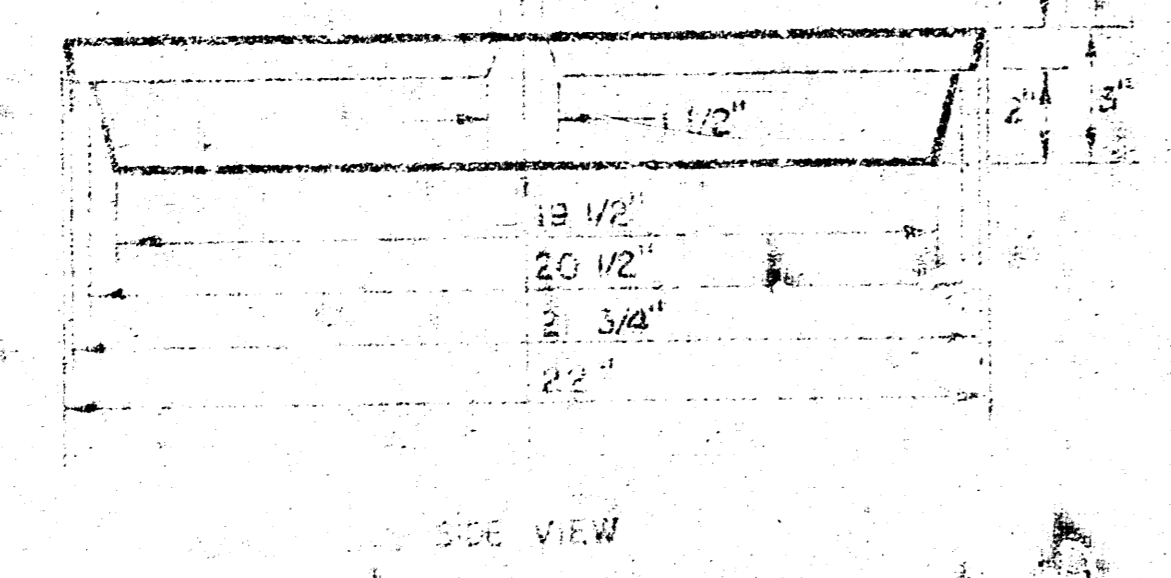
3. OUTSIDE DROP MANHOLES SHALL BE BID AS STANDARD OUTSIDE DROP MANHOLES FOR THE TYPE AND DIAMETER INDICATED. ALL MANHOLE DIAMETERS WILL BE "4" UNLESS INDICATED OTHERWISE.

4. MANHOLES WITH DIAMETERS LARGER THAN 24" SHALL BE 6" DIAMETER.

5. THE FLOORS OF ALL MANHOLES SHALL BE SHAPED TO INCREASE HYDRAULIC EFFICIENCY USING 7 SACK SAND MIX CONC.



SECTION A-A MANHOLE COVER



SIDE VIEW MANHOLE COVER

DETAILS OF SEWER APPURTENANCES ADOPTED AS STANDARD DESIGN BY ENGINEERING DIVISION CITY OF WICHITA, KANSAS R. W. LIND CITY ENGINEER 1974