

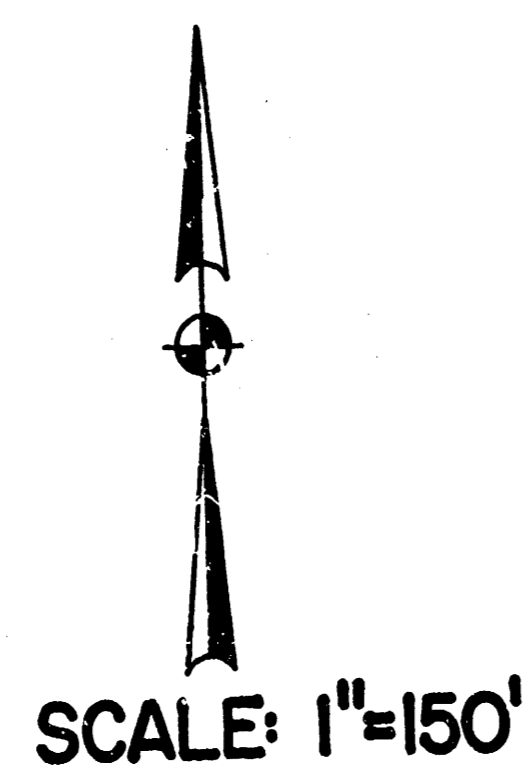
STORM WATER SEWER NO. 113

CITY OF WICHITA, KANSAS

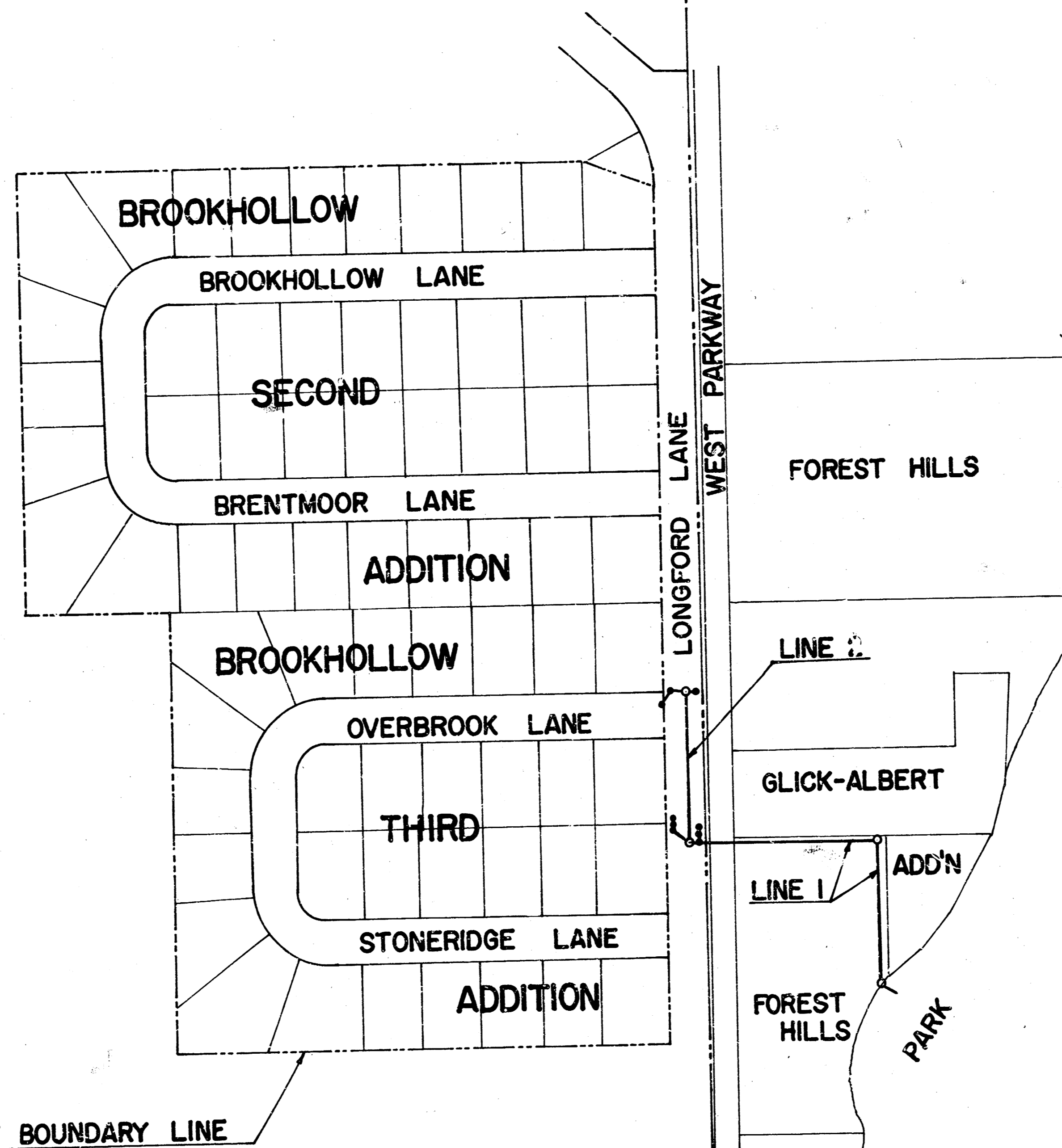
R.W. LINN, CITY ENGINEER

CENTRAL AVE.

SEC. 20, T27S, R2E



BENEFIT DISTRICT BOUNDARY LINE



GENERAL NOTES

The price bid for "Clearing Right-of-Way" shall include all removal and replacement work necessary for construction of Storm Water Sewer No. 113 and shall include tree removal and the removal and replacement of stone walls and walks. This work east of Longford Lane shall also include the chaping of the surface similar to existing ~~work~~ ~~planting of stone walls~~. Attempts have been made to indicate location of trees, stone walls and stone walks on the plans. Site inspection is required by contractor to verify extent of required work.

The price bid for "Pipe" includes the required fence removal and replacement. It may be possible to construct Storm Water Sewer No. 113 without fence removal, but costs may be less to the contractor if he removes and replaces the fence. The contractor has the option to construct Storm Water Sewer No. 113 with or without fence removal. All fence removed shall be replaced.

Pipe furnished for this project shall be either all reinforced concrete pipe or all corrugated metal pipe. Corrugated metal pipe shall conform to the applicable sections of Section 1009.05 and 1009.07 of the 1973 Kansas State Highway Specifications. Corrugated metal pipe furnished for this project shall be coated in accordance with "Type C" of Section 1009.07. The outlet pipes from curb inlets shall be same size corrugated metal pipe as shown for reinforced concrete pipe.

All curb inlets are to be constructed at the "set-back" location. See Wichita Standard Drawing for Standard 2' x 5' Inlet (Set Back Location). Construction notes for each inlet gives the size and length of the out-flow pipe together with its upstream flow elevation (U.S.F.L.) and its downstream flow elevation (D.S.F.L.).

All brick manholes are to be constructed in accordance with Wichita Standard Drawing entitled "Sewer Appurtenances."

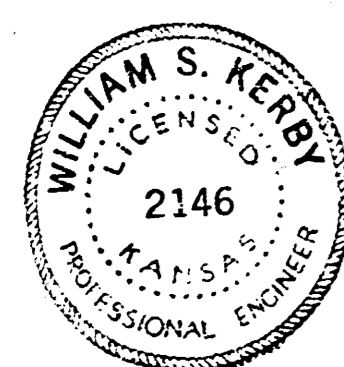
Contractor must use special care while constructing inlets on west side of Longford Lane so as to not damage water line under said inlets. The water lines as shown on the plans as "proposed" may be constructed by the time that the inlets are to be constructed.

Manhole rings having a base diameter of 54" shall be used with all brick manholes.

NOTE: TREES TO BE REMOVED ONLY WHEN APPROVED BY THE ENGINEER

PROJECT NO. DBKA 574066

DATE: _____

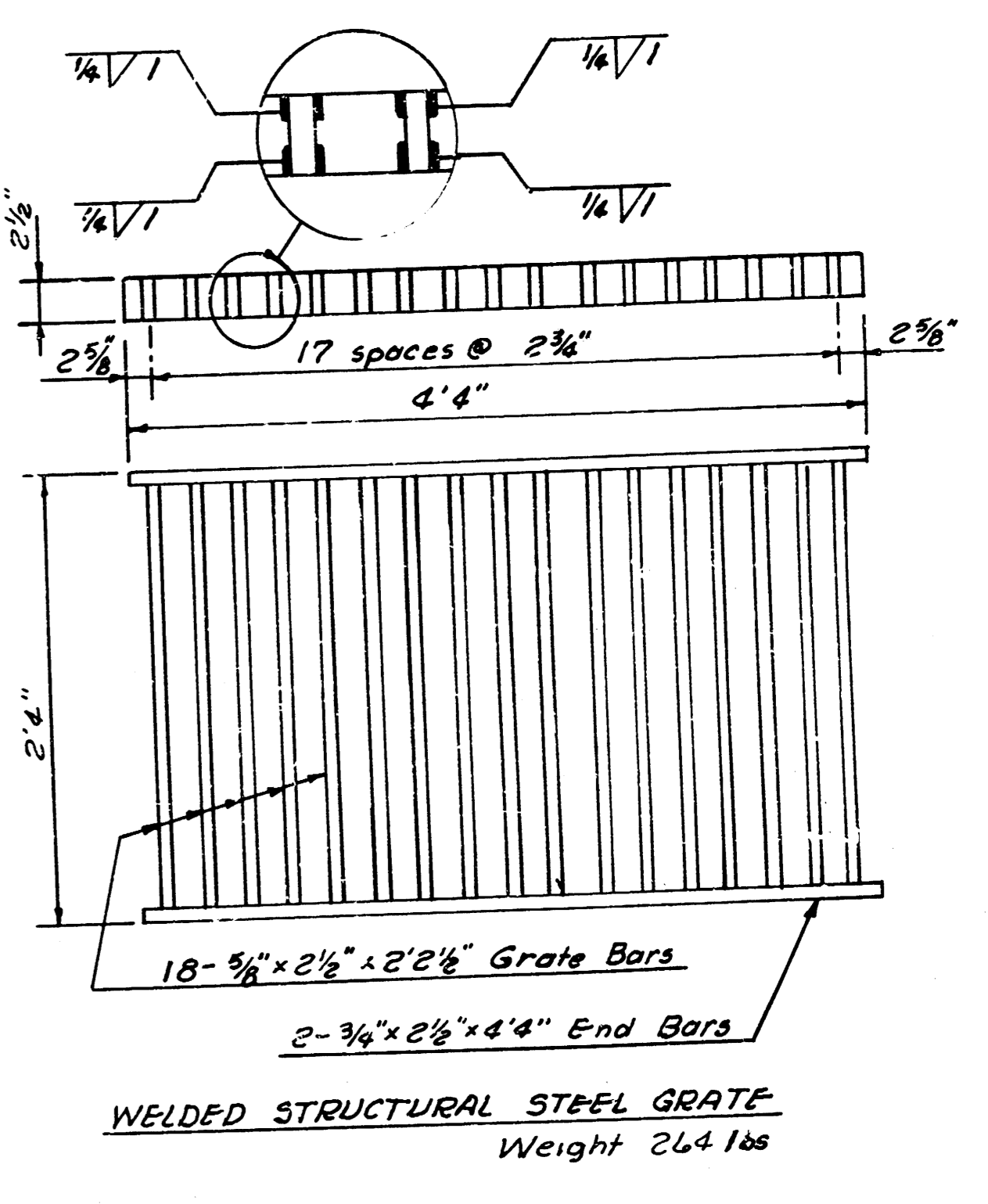
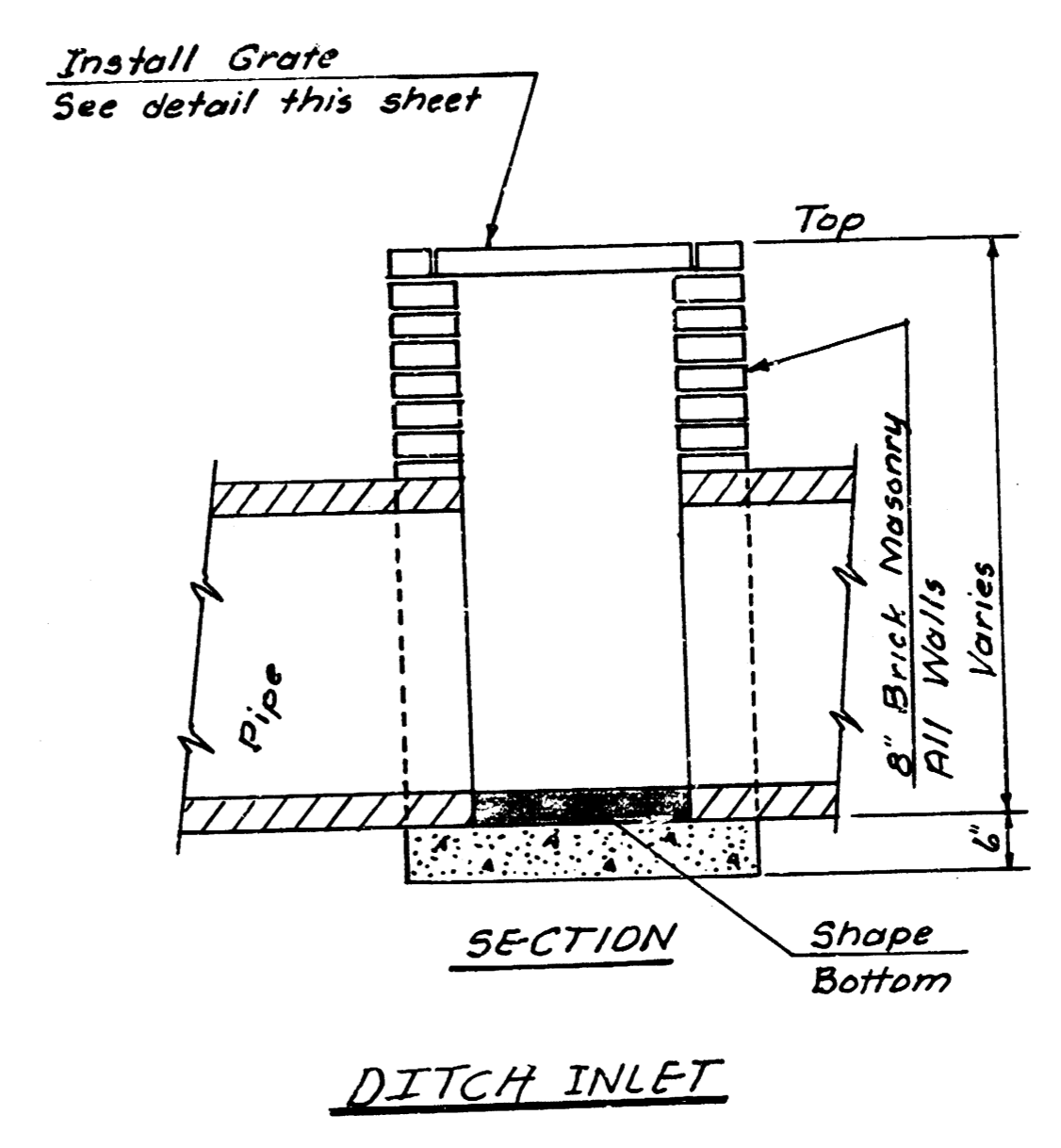
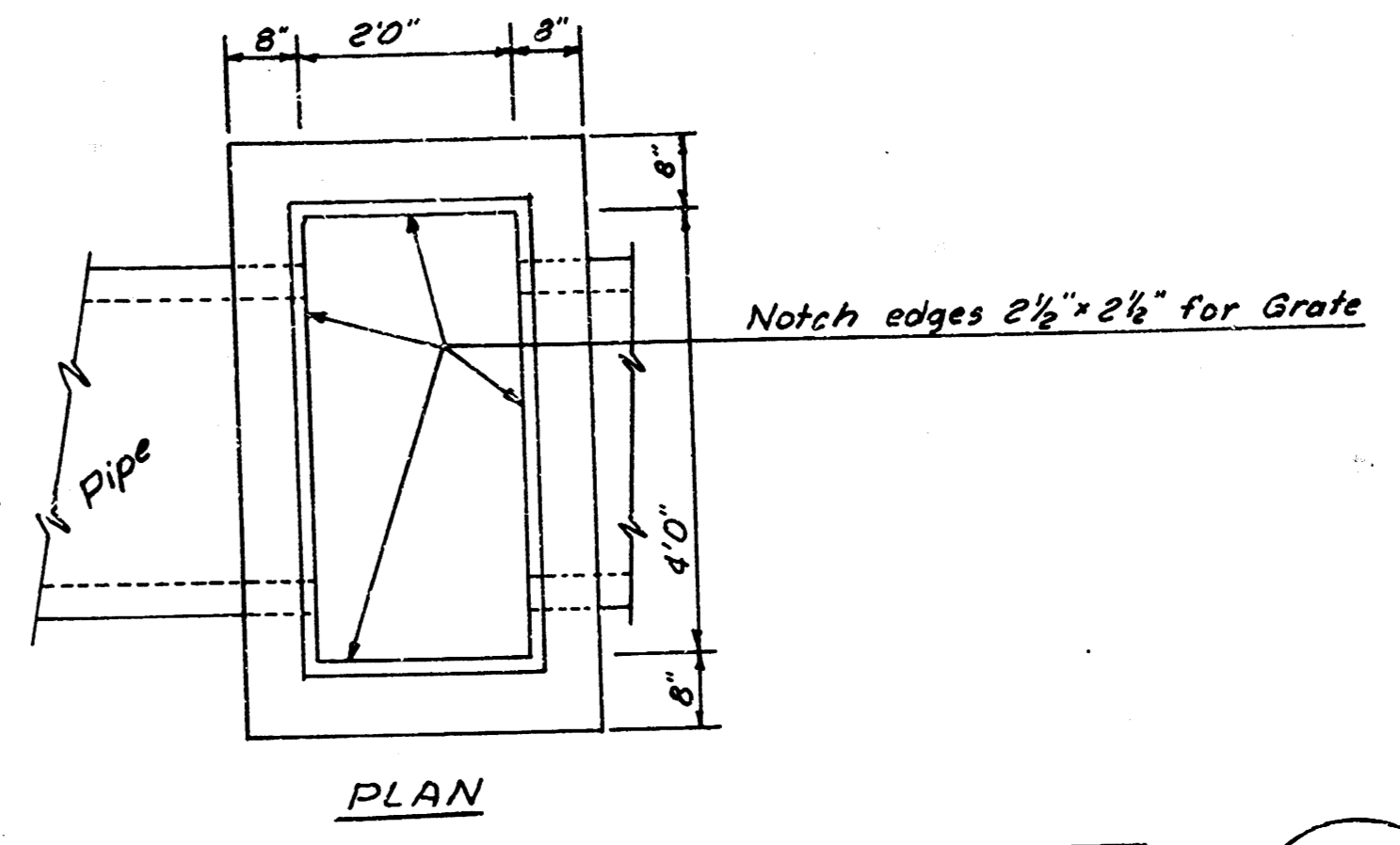
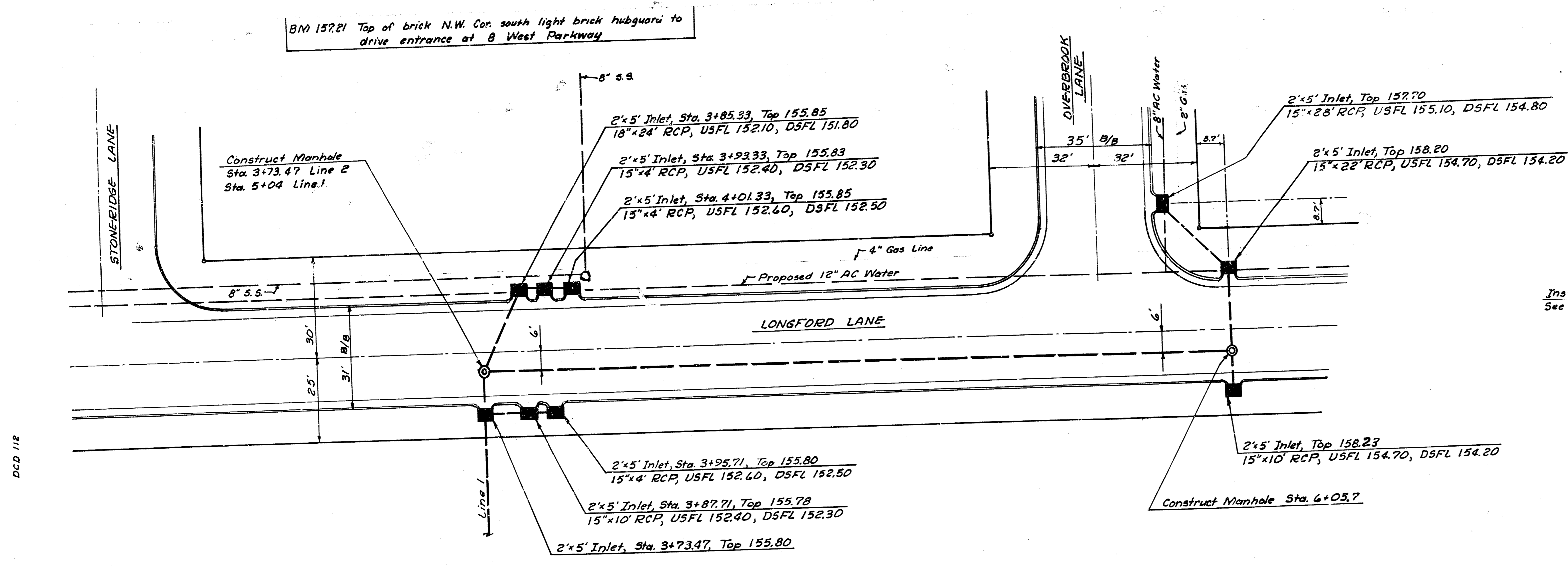


STORM WATER SEWER NO. 113

Sheet 1 of 5 1/5

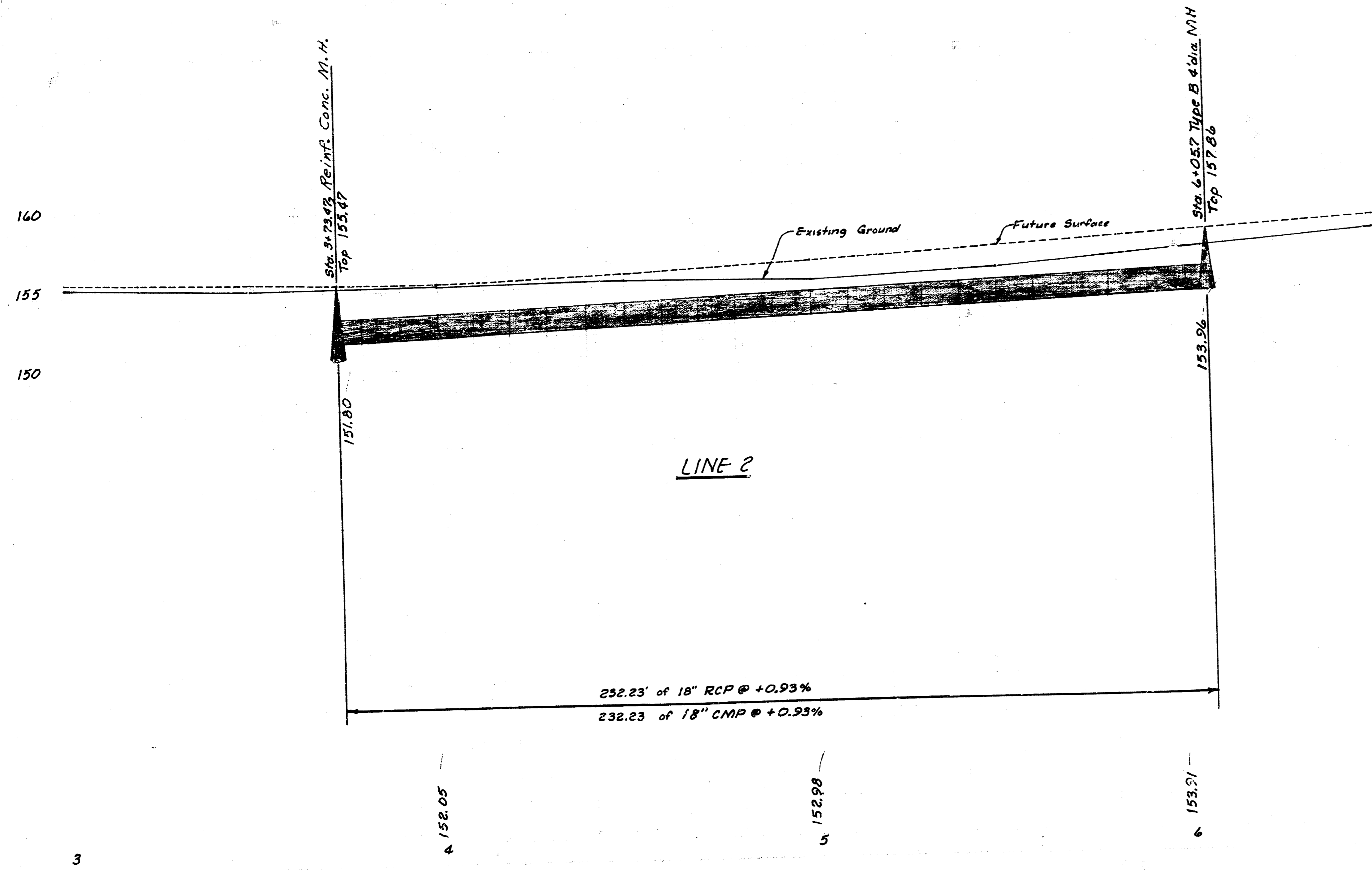
FILMED FROM THE BEST AVAILABLE COPY

BM 157.21 Top of brick N.W. Cor. south light brick hubguard to drive entrance at 8 West Parkway

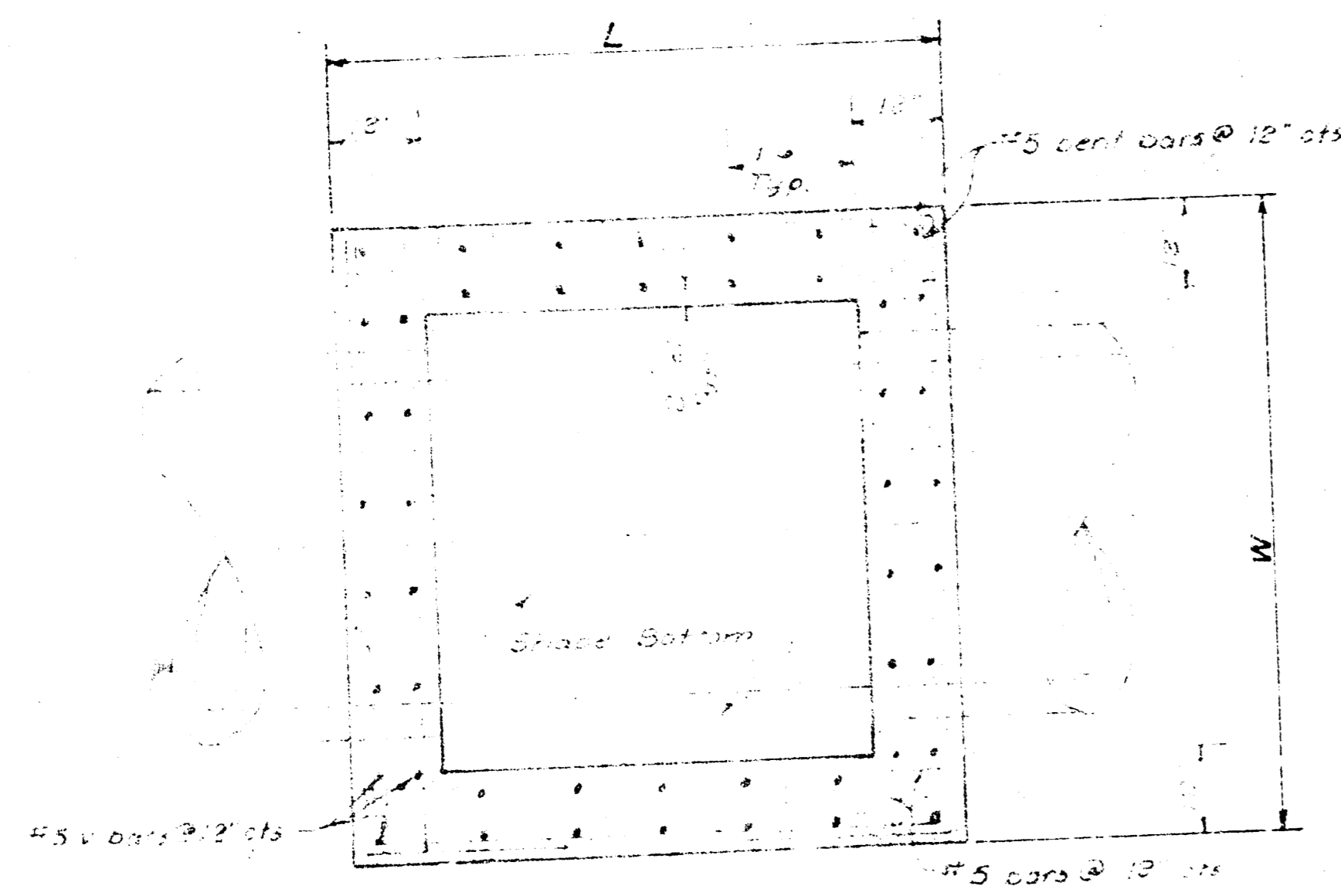


NOTE: Streets as shown are proposed and do not exist. All inlets at set-back location.
 Stationing this sheet equals paving stationing Longford Lane.

SCALE: Hor. 1"=20'
 Ver. 1"=5'



FILMED FROM THE BEST AVAILABLE COPY.....

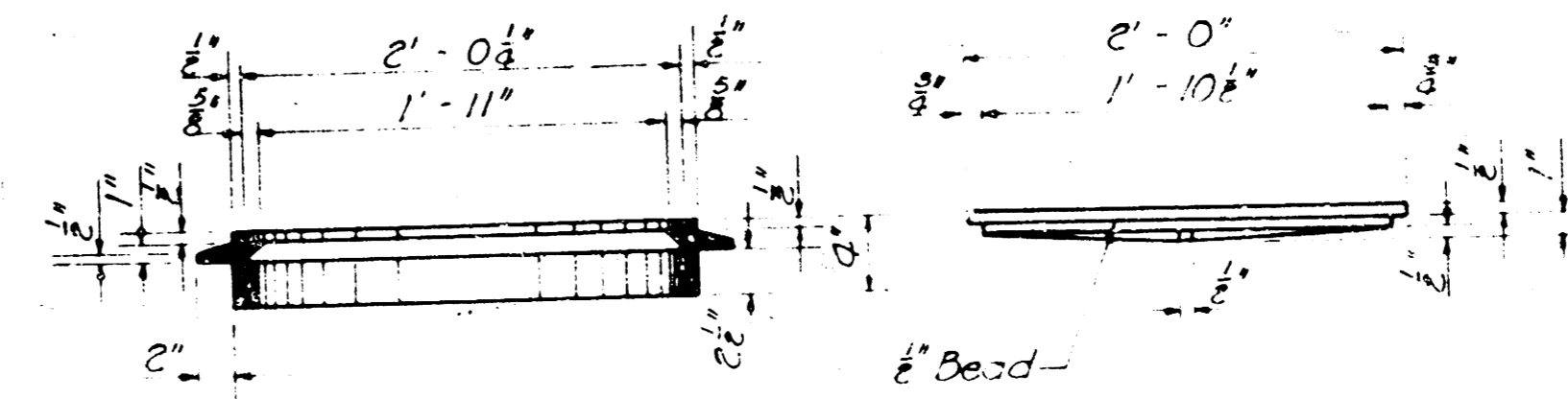


PLAN SECTION THRU WALLS
SCALE: 1/2" = 1'-0"

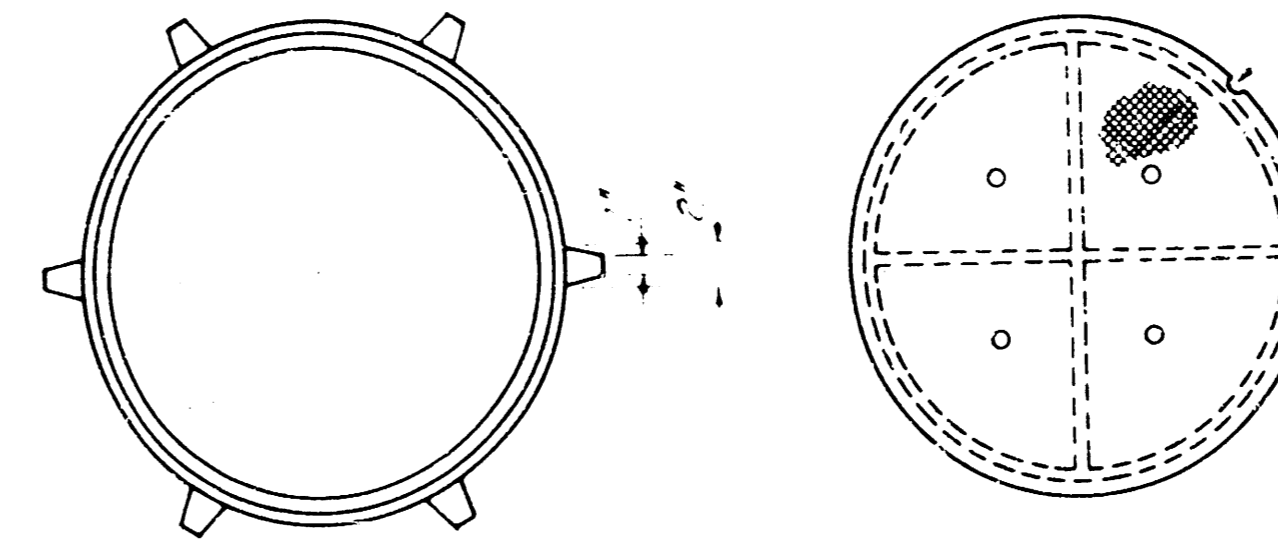
MANHOLE SCHEDULE

STATION	L'	W'	Top Elev.
0+25*	6'0"	6'0"	144.38
1+00*	6'0"	6'0"	145.97
2+29*	6'0"	6'0"	148.55
5+09	6'0"	6'0"	154.05

* Light Type Casting



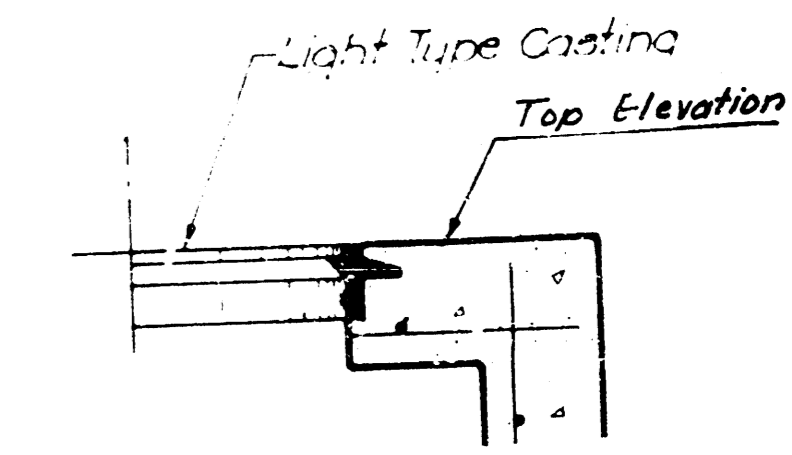
NOTE: Weight of castings includes no allowance for fillers and overruns.



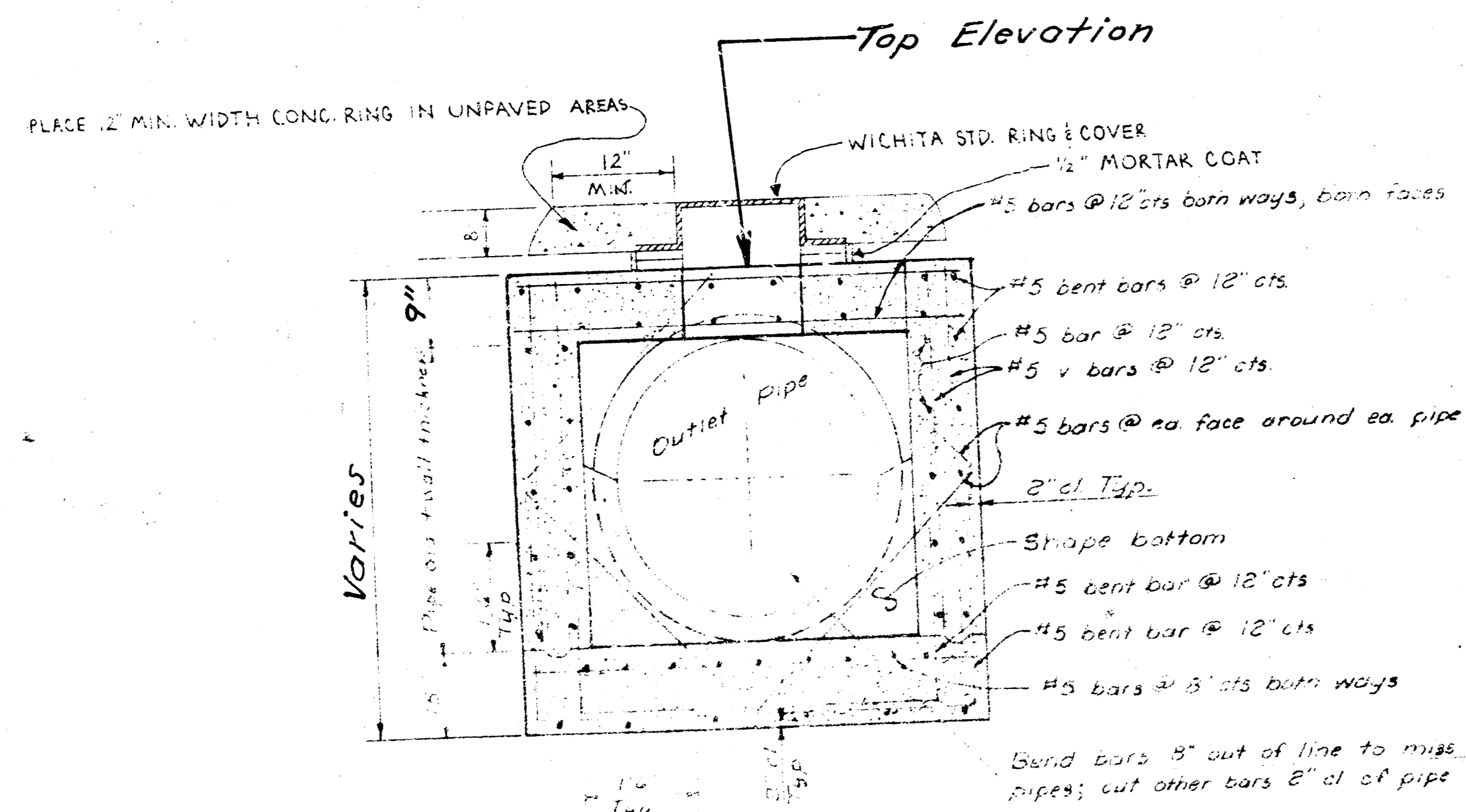
CAST IRON MANHOLE RING
Weight - 53 lbs.

CAST IRON MANHOLE COVER
Weight - 64 lbs.

LIGHT TYPE MANHOLE COVER & RING



LIGHT TYPE CASTING INSTALLATION



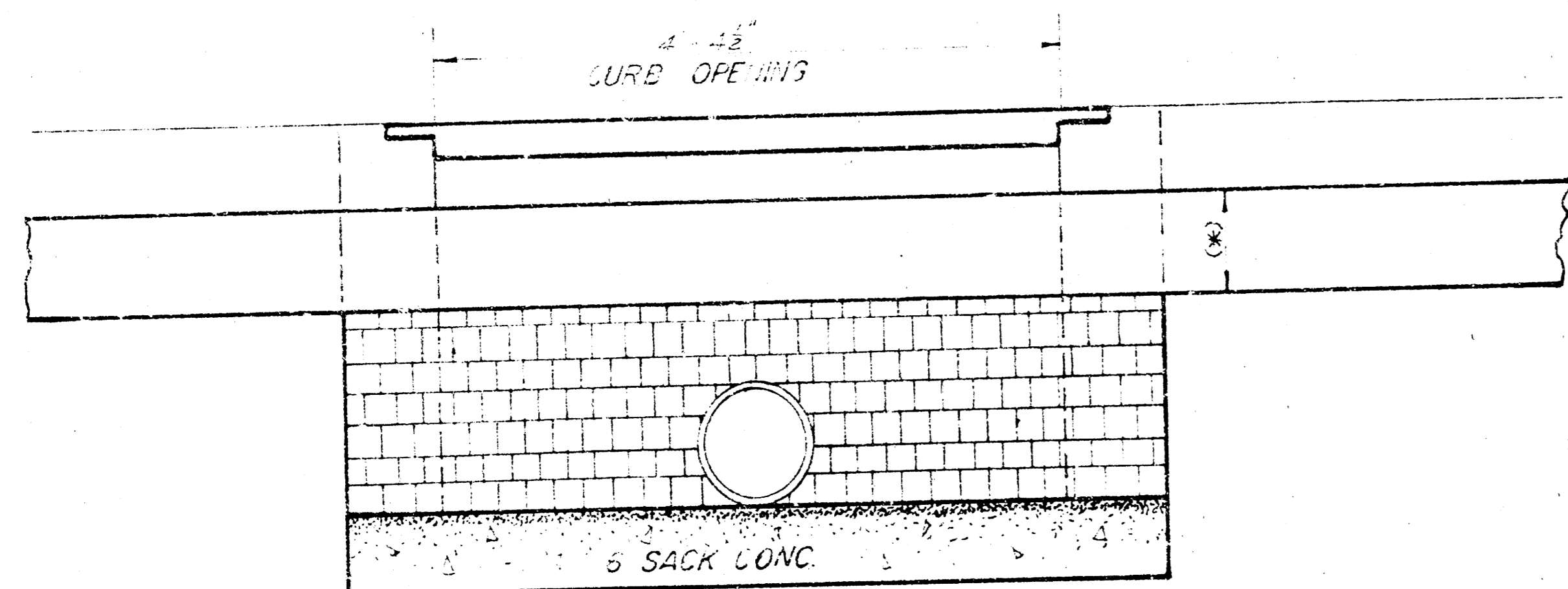
TYPICAL ELEVATION SECTION
SCALE: 1/2" = 1'-0"

STD. REINFC. CONG. MANHOLE DETAILS

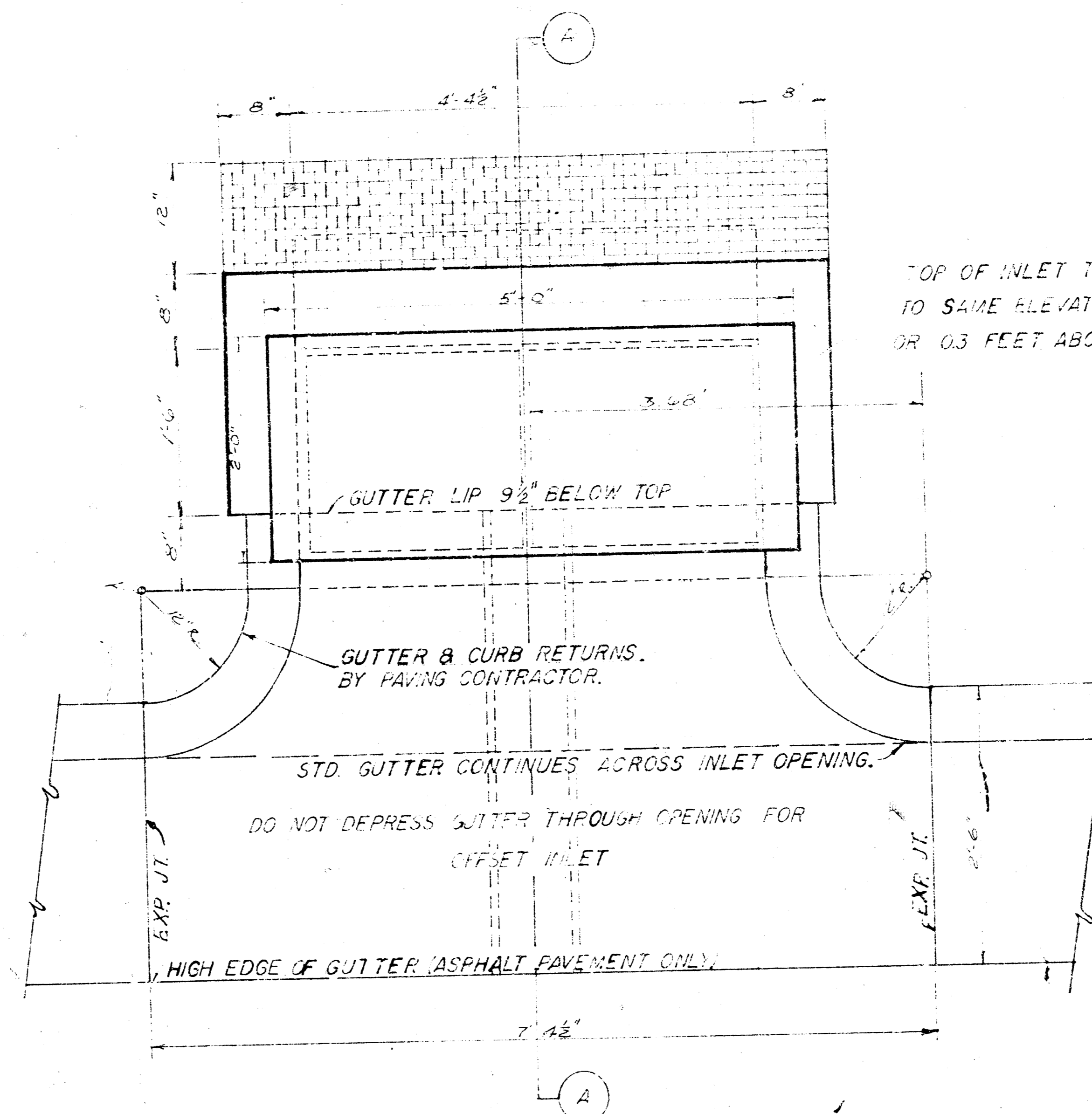
Reinforced Concrete Manhole Details
S. W. S. #113
Proj. No. DBKA574066
Sheet # 4 of 5

THIS TYPE INLET TO BE USED
WHEN PAVEMENT IS ASPHALT
PAVEMENT WITH ASPHALT
BASE COURSE AND/OR WHEN
PAVEMENTS HAVE ROLL CURB.

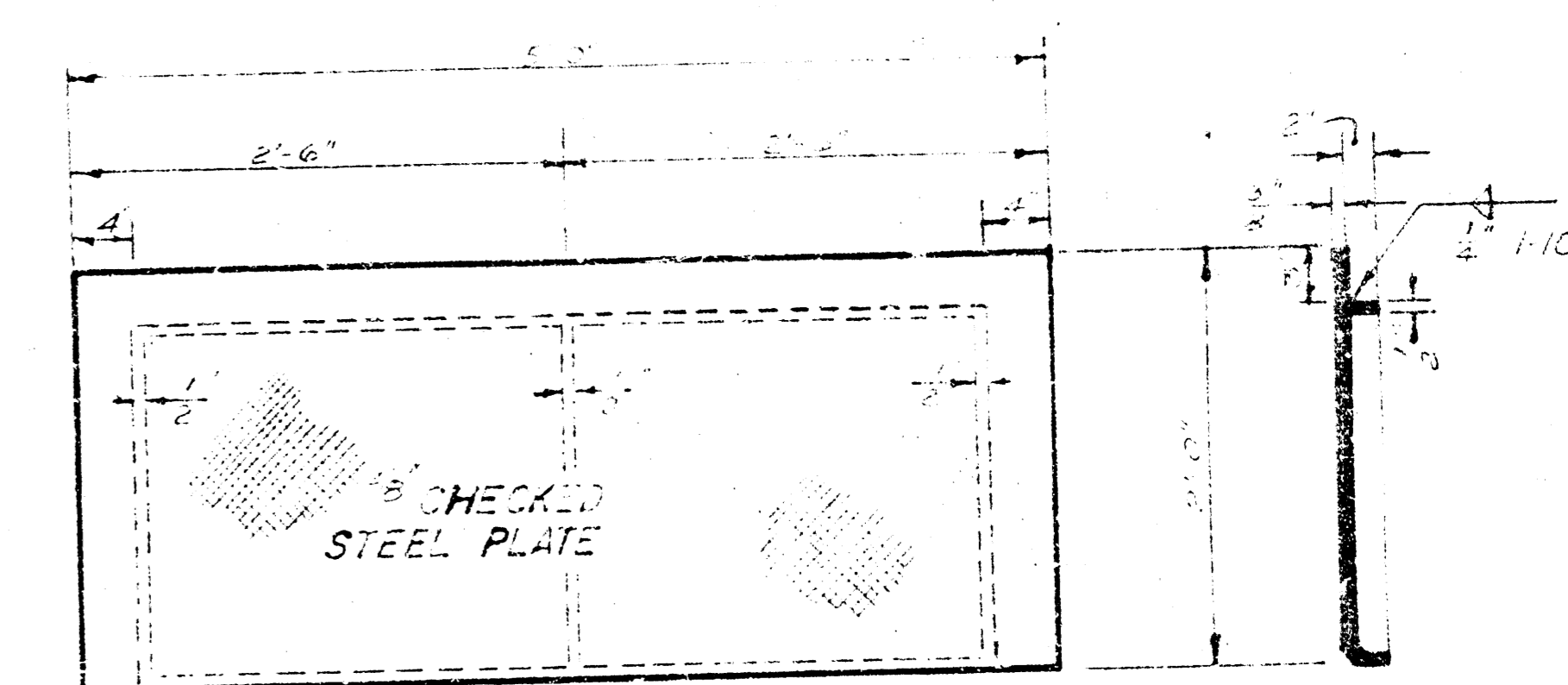
NOTE: STRUCTURAL STEEL FOR
INLET COVER SHALL CONFORM
WITH THE LATEST REVISION OF
THE AMERICAN SOCIETY FOR
TESTING AND MATERIALS
DESIGNATION A36.



ELEVATION



PLAN



PLAN

SECTION

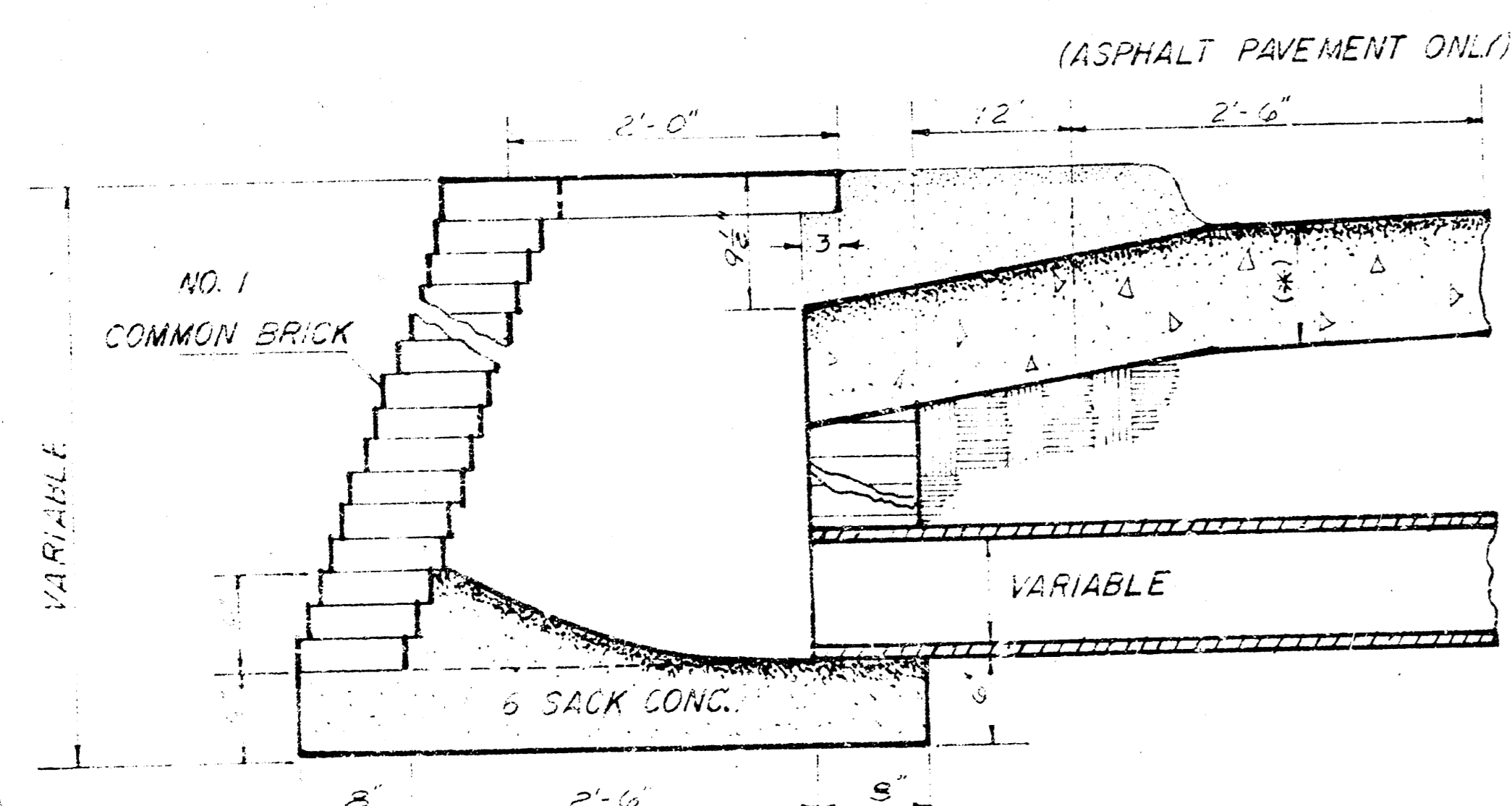
ELEVATION

CITY OF WICHITA
STEEL INLET COVER
WEIGHT=206 LBS.
SHOP PAINT=BLACK ASPH
SCALE 1/2"=1'-0"

DETAIL
STANDARD 2'x5' INLET
(SET BACK LOCATION)

CITY OF WICHITA, KANSAS
R. W. LINN CITY ENGINEER

JUNE 1974



SECTION THRU INLET

2'x5' INLET DETAIL
SCALE 1/2"=1'-0"

NOTE: BRICK FOR INLET CONSTRUCTION
SHALL CONFORM WITH THE LATEST
REVISION OF THE AMERICAN
SOCIETY FOR TESTING AND
MATERIALS DESIGNATION C32
FOR MANHOLE BRICK GRADE MS.

STANDARD 2'x5' INLET AT SET-BACK LOCATION

SCALE 1/2"=1'-0"

(*) CURB & GUTTER OR PAVEMENT THICKNESS

S.W. S. #113
Proj. No. DBKA574066
Sheet # 5 of 5

14 1 5 (5)

FILMED FROM THE BEST
AVAILABLE COPY....