

Storm Water Sewer 125

Northborough Addition

- NOTES
- 1) CONTRACTOR SHALL COORDINATE WORK WITH PAVING AND SANITARY CONTRACTORS, AND CONTACT RELEVANT UTILITY COMPANIES AND OTHER AGENCIES INVOLVED WITH THIS PROJECT SITE DEVELOPMENT.
 - 2) FIELD ENGINEER SHALL TAKE TIES TO ALL IRONS AND CHIMNEYS IN THE PROJECT AREA BEFORE CONSTRUCTION BEGINS. FIELD ENGINEER SHALL REPLACE ALL SUCH IRONS AND CHIMNEYS DISTURBED DURING CONSTRUCTION.
 - 3) THE TOPS OF INLETS AND MANHOLES AS NOTED ON THE PLANS MAY VARY SO AS TO MEET PROPOSED TOP OF CURB ELEVATIONS OR PAVEMENT ELEVATIONS. THE FIELD ENGINEER SHALL LOCATE INLETS AND MANHOLES WITH REFERENCE TO PROPOSED PAVING PLANS OF THE PERTINENT STREETS.
 - 4) ALL CONCRETE SHALL BE "6-SACK CONCRETE" UNLESS OTHERWISE NOTED.
 - 5) CONTRACTOR SHALL AVOID UNCOVERING EXISTING WATER LINES UNLESS ABSOLUTELY NECESSARY. UNCOVERING SHALL BE DONE ONLY IN THE PRESENCE OF A WATER DEPARTMENT ENGINEER.
 - 6) CONTRACTOR SHALL HAVE THE OPTION OF INSTALLING PRE-CAST TYPE I-A CURB INLETS IN LIEU OF THE BRICK TYPE STRUCTURE. SEE STANDARD DETAIL PRE-CAST TYPE I-A CURB INLET, DATED AUGUST, 1979.

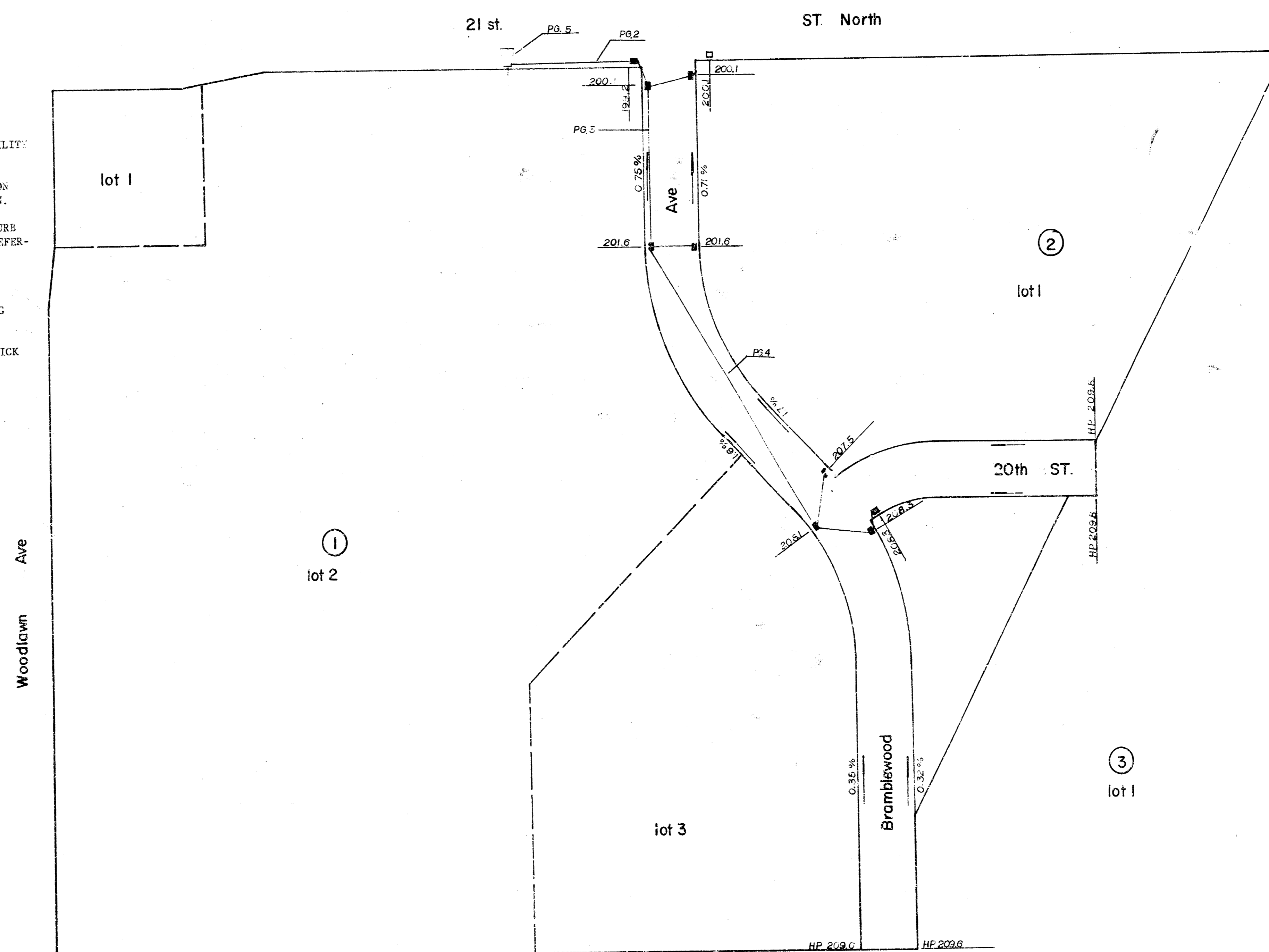


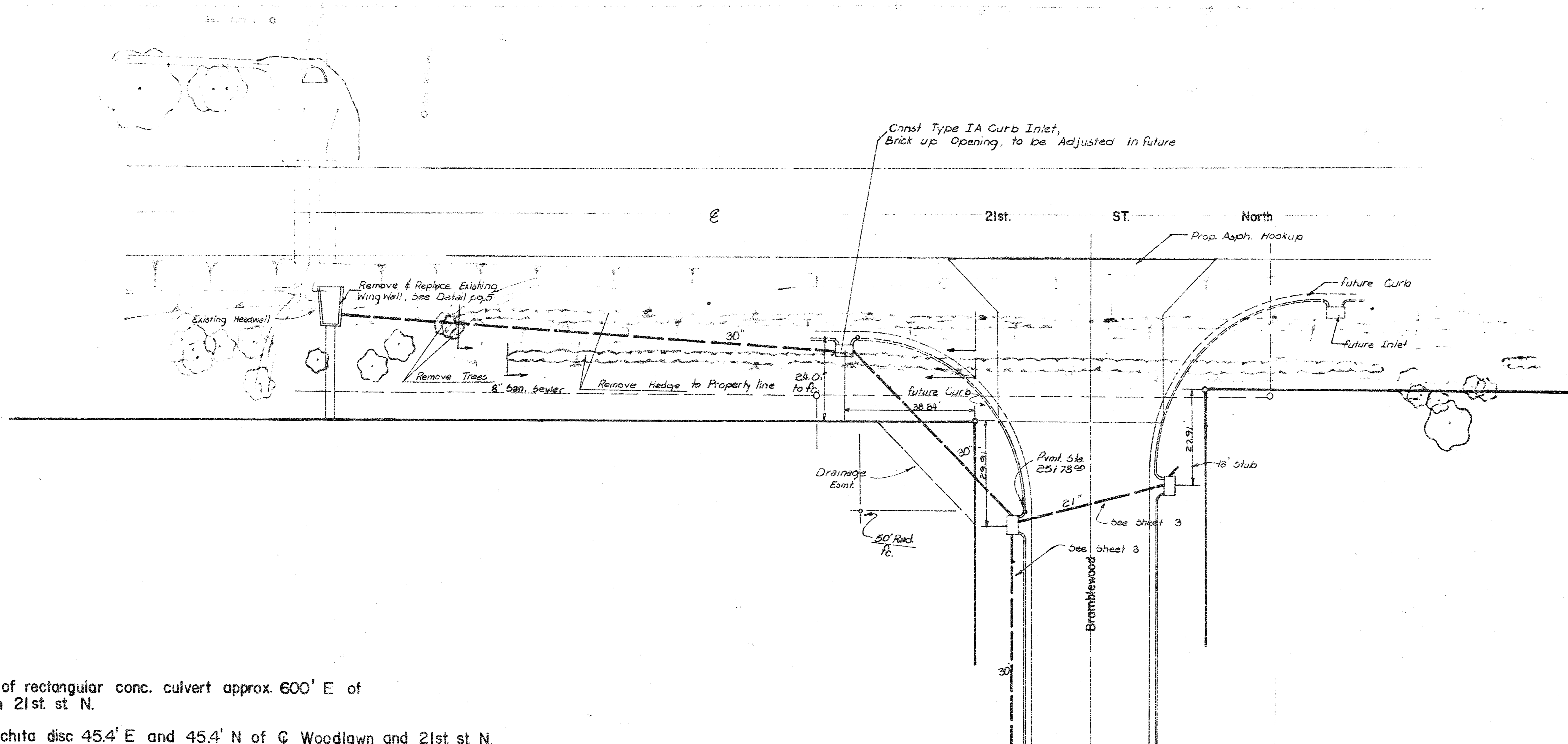
Table of Contents

Title sheet	page
Plan and Profile	2-4
Detail Wingwall	5
Type IA Curb Inlet	6
Sewer Appurtenances	7

City of Wichita, Kansas
 Dean Sellers Acting City Engineer
 Proj. no. 468-76-245-80414-000-000-001
 Date _____

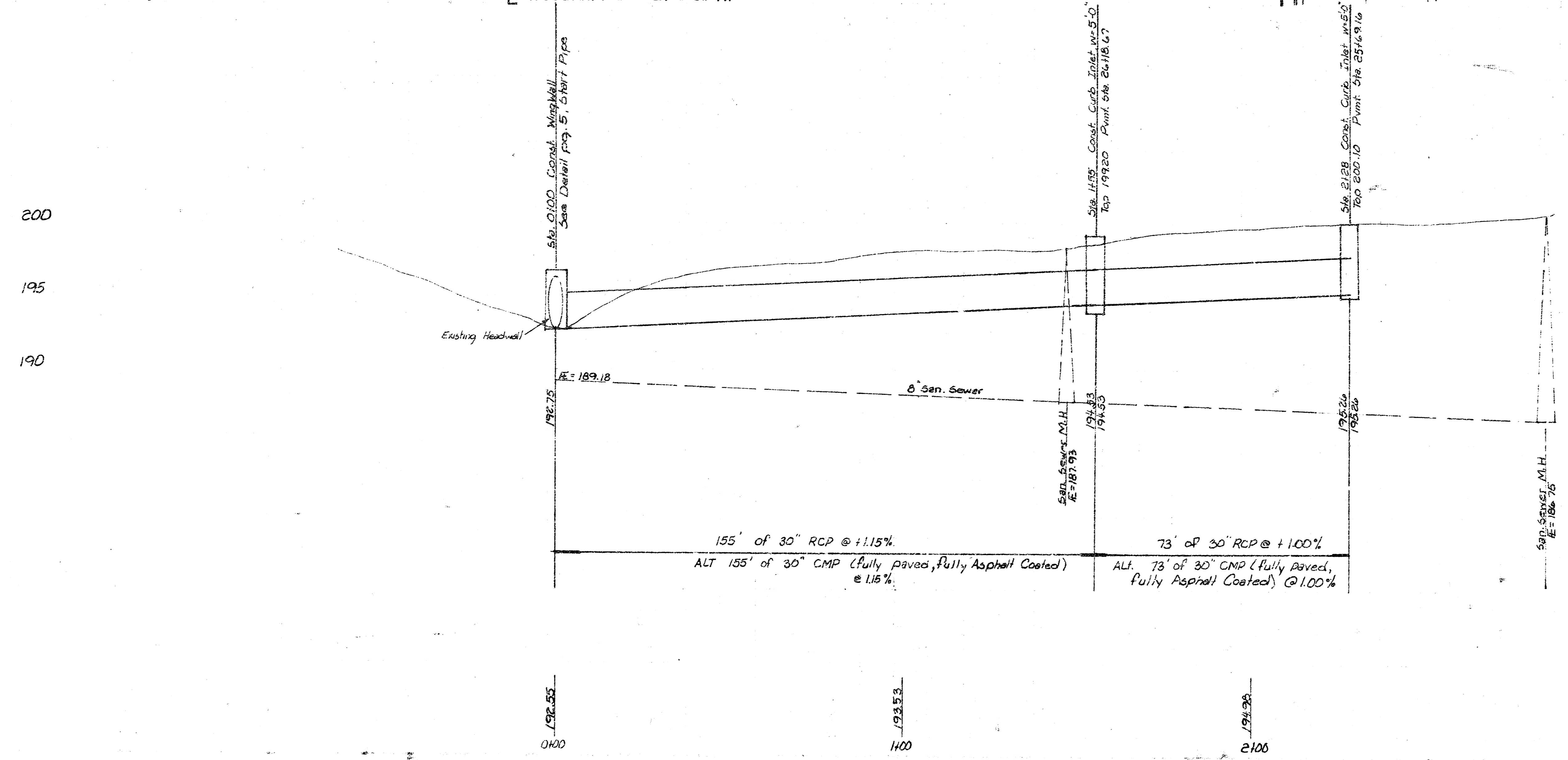


1/15

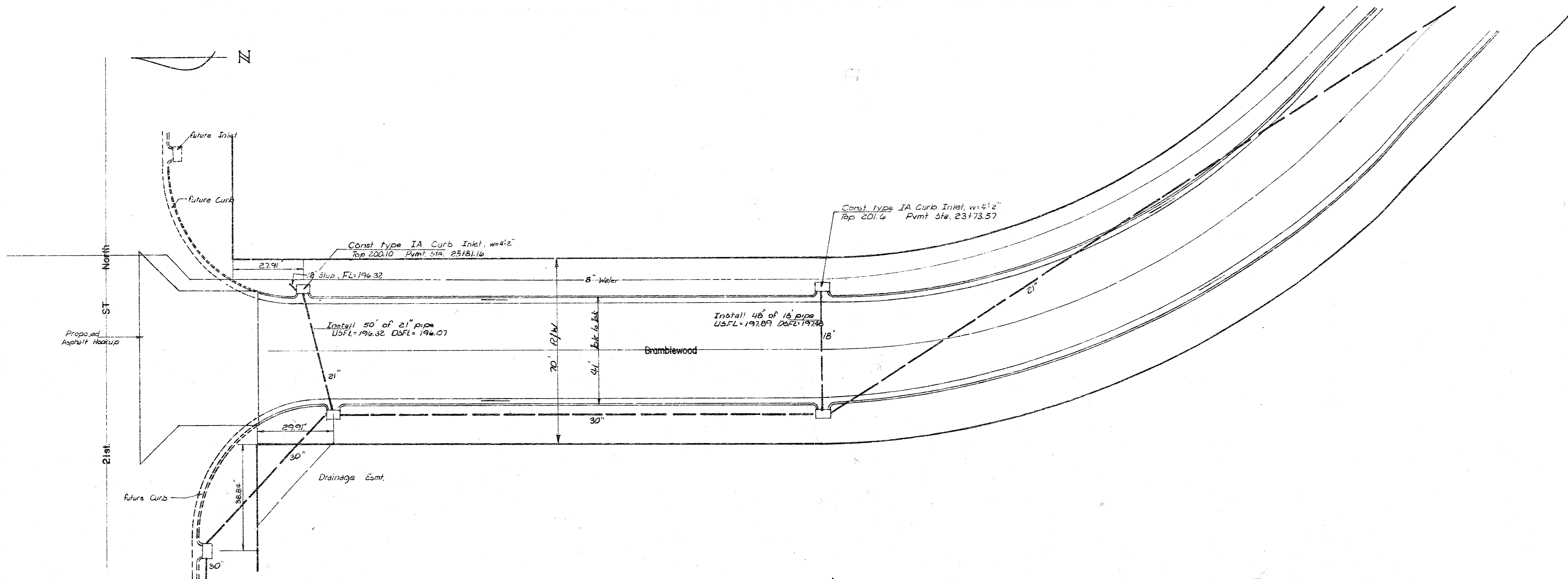


Scale
Plan 1"=20'
Profile Horiz. 1"=20'
Vert. 1"=5'

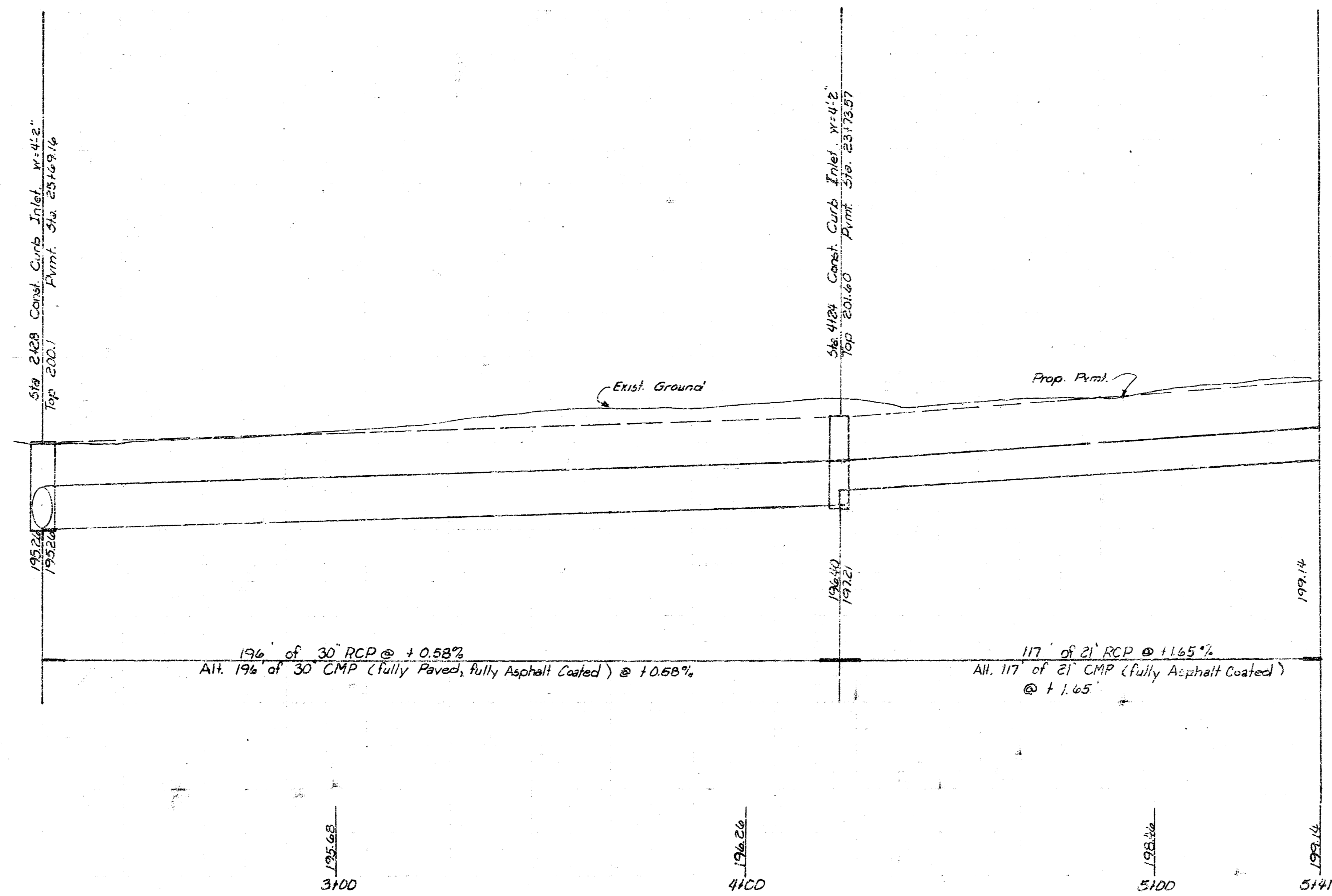
BM 196.35 "□" NW cor of rectangular conc. culvert approx. 600' E of Woodlawn on 21st st N.
BM 200.65 City of Wichita disc 45.4' E and 45.4' N of C Woodlawn and 21st st N.



JLA-19

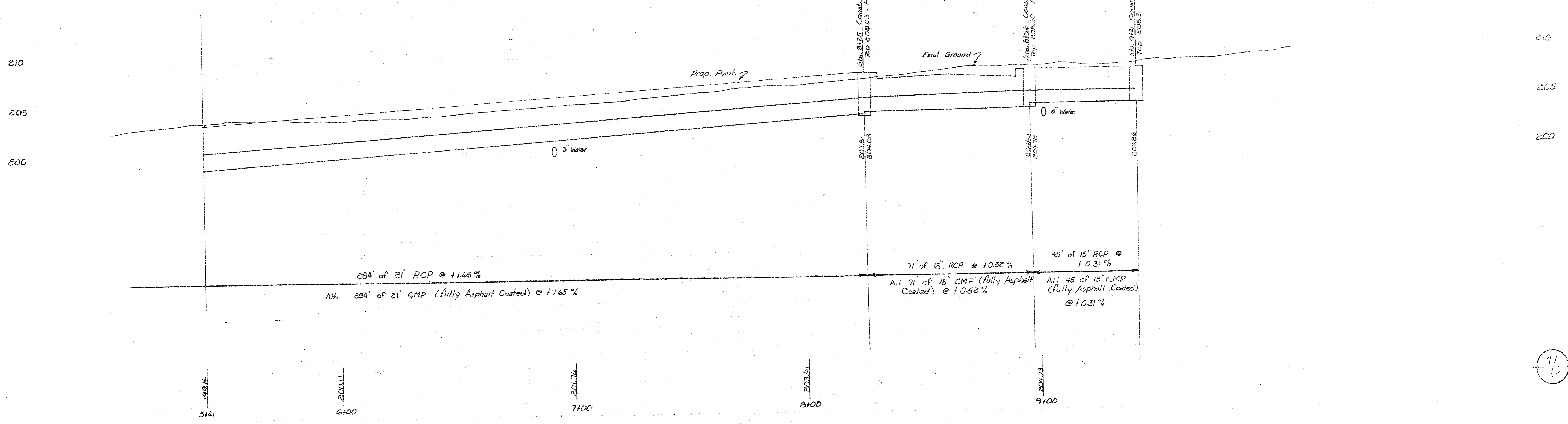
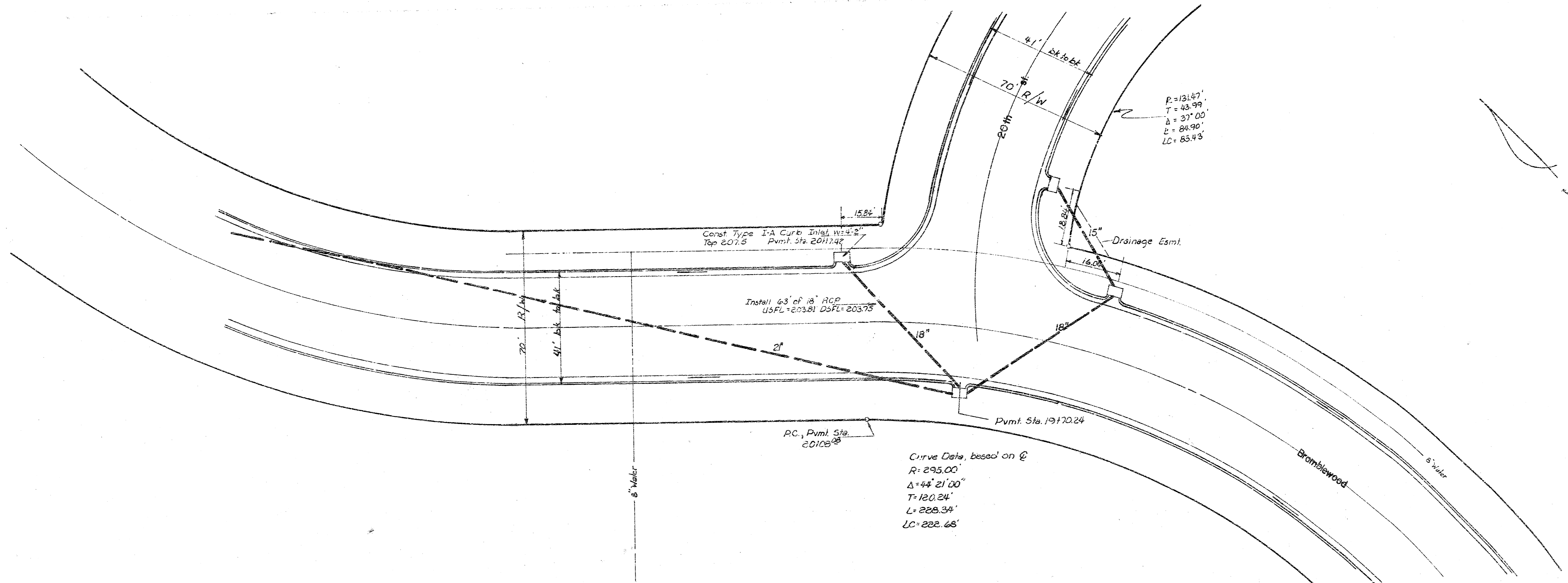


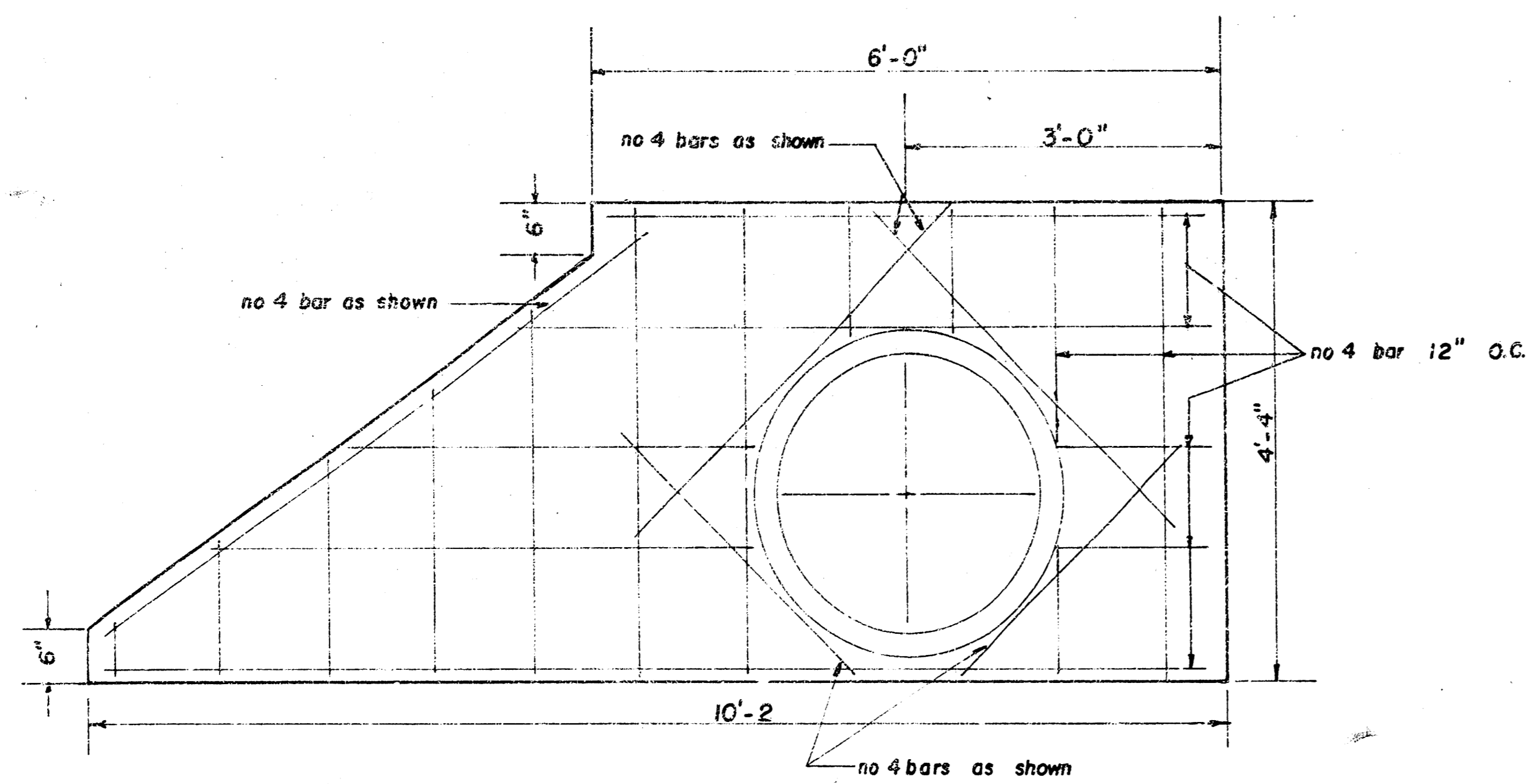
205
200
195



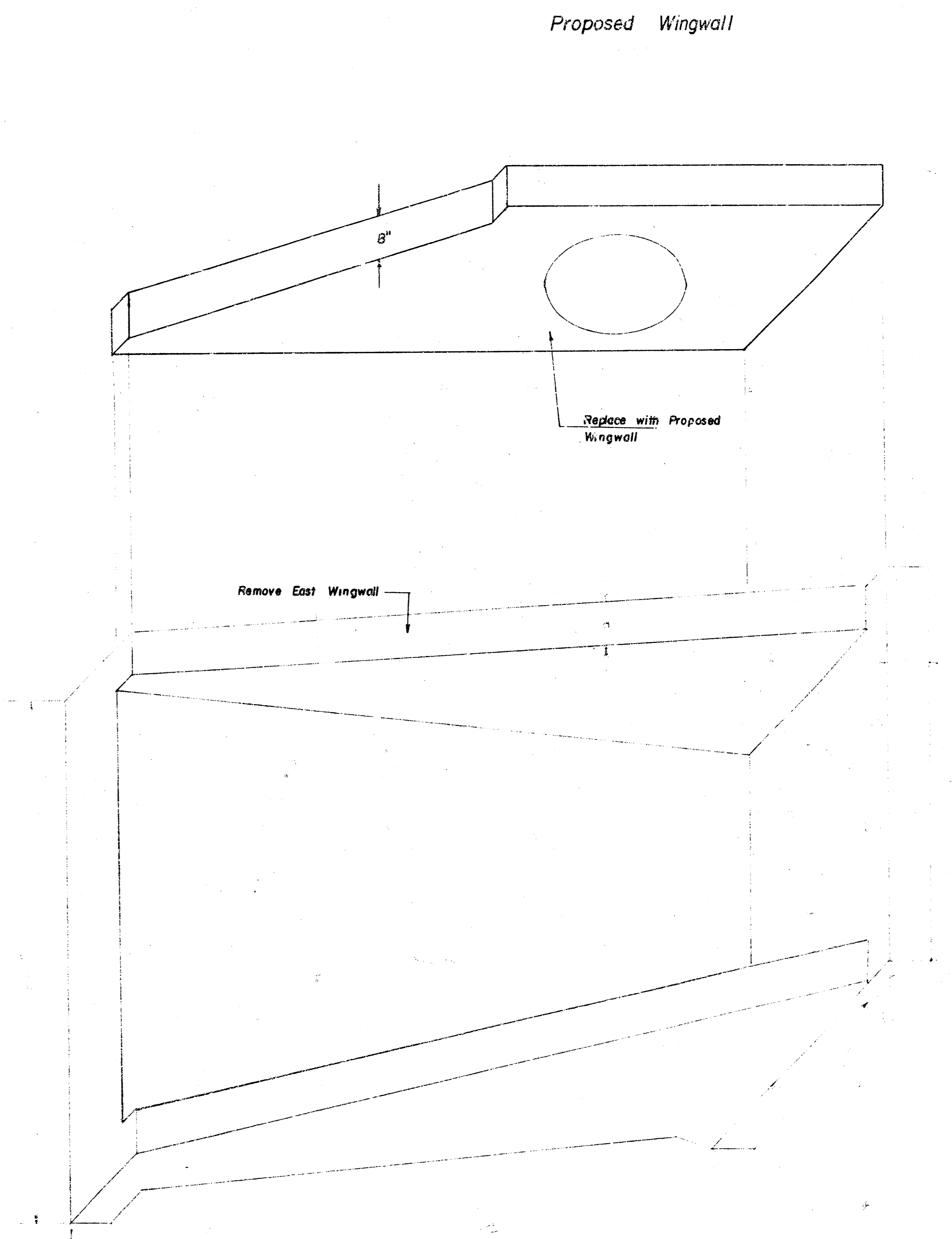
205
200
195

JLA-19





Wingwall Profile



Existing Headwall

Wingwall Detail
NO SCALE