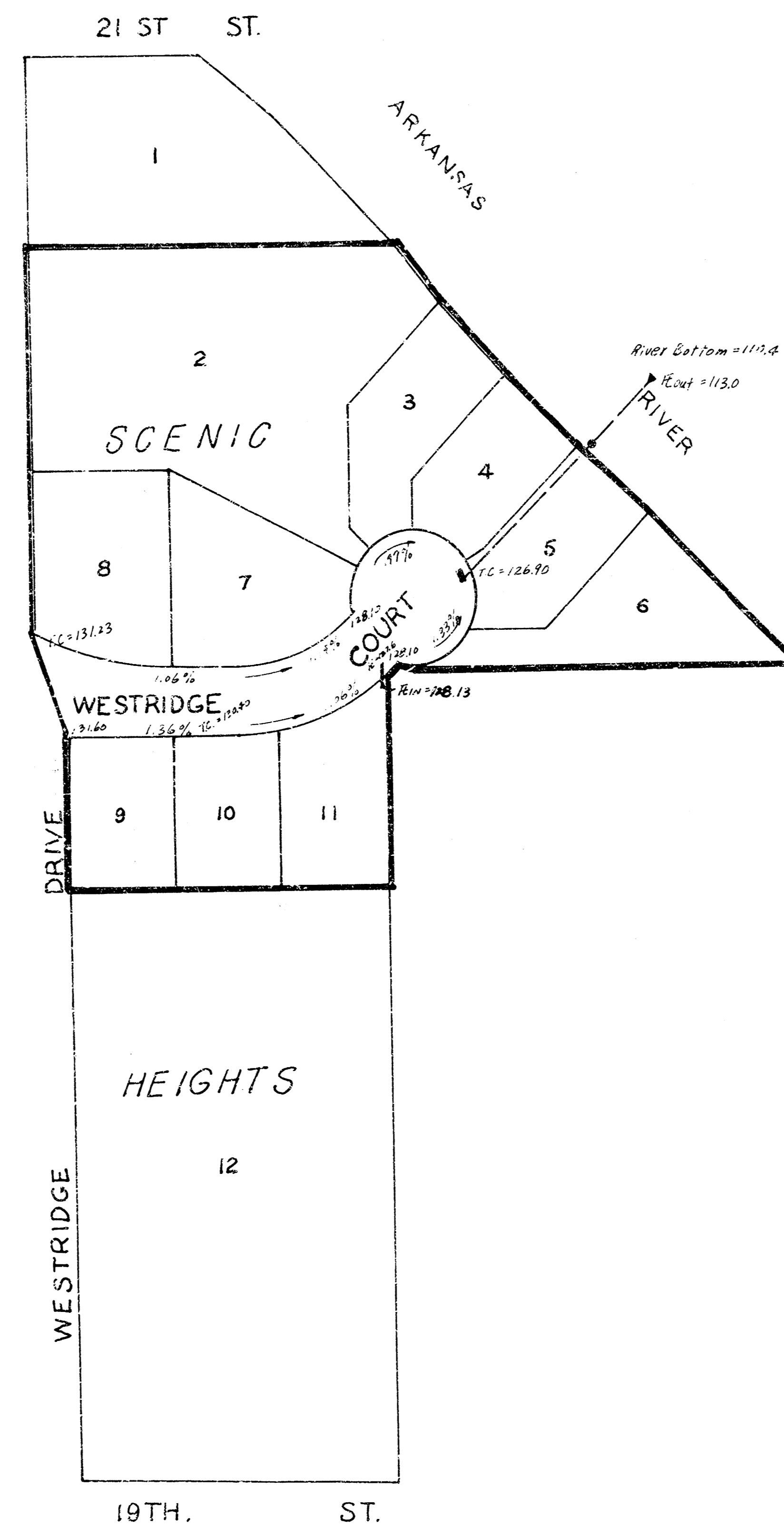
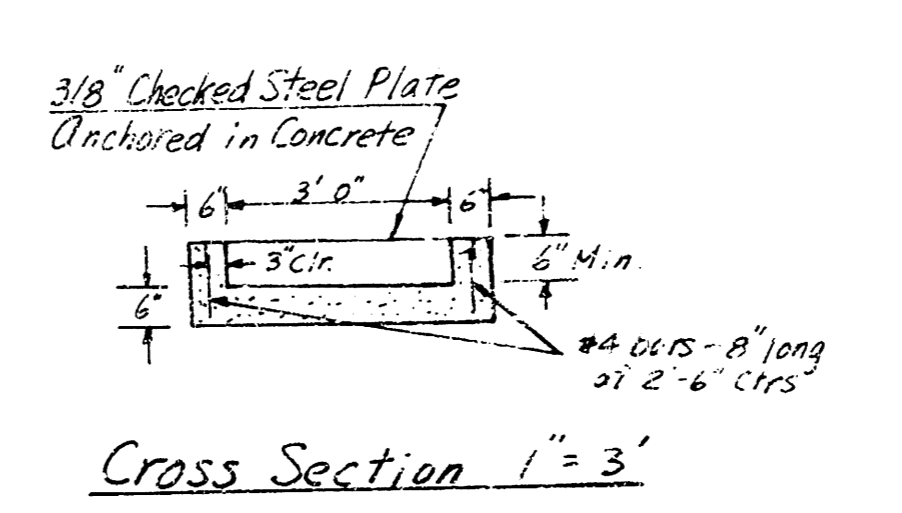
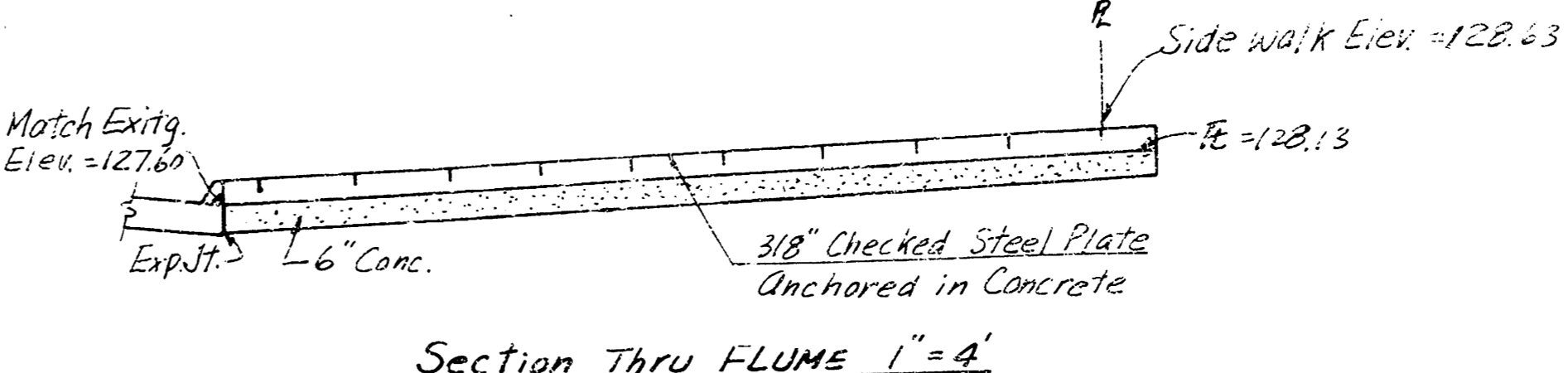
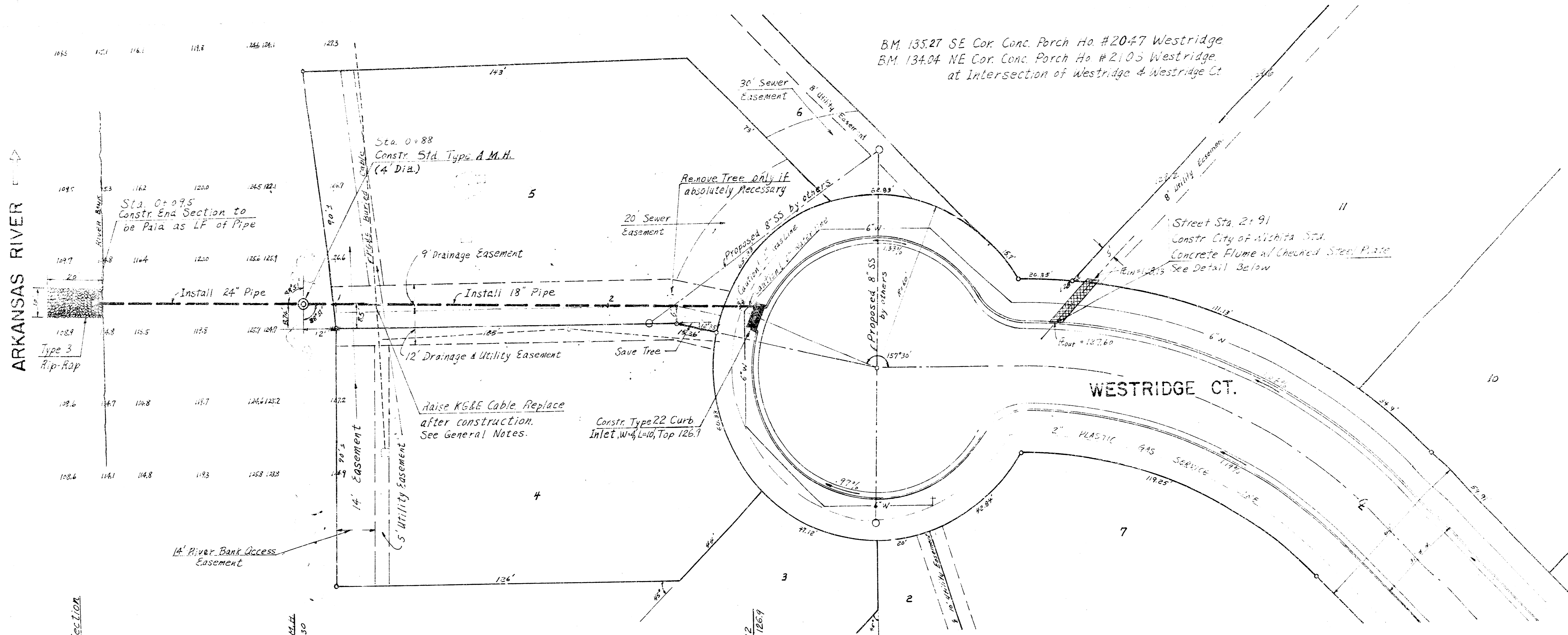
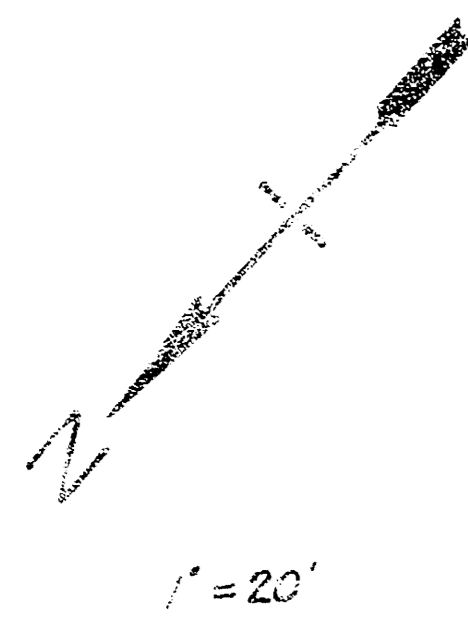


STORM WATER SEWER NO. 163
 CITY OF WICHITA, KS.
 DEAN SELLERS - ACTING CITY ENGINEER
 PROJECT NO. 468 76 245 80764 000 000 001

GENERAL NOTES

1. CONTRACTOR SHALL AVOID EXPOSING WATER LINE EXCEPT WHERE SUCH EXPOSURE IS UNAVOIDABLE (FIRE LEADS, E.C.). UNCOVERING OF ANY WATER LINE SHALL BE PERFORMED ONLY IN THE PRESENCE OF WATER ENGINEER.
2. THE TOPS OF MANHOLES AND MANHOLES AS SHOWN ON THE PLANS MAY VARY SO AS TO MEET PROPOSED TOP OF CURB ELEVATIONS OR STREET ELEVATIONS. THE FIELD ENGINEER SHALL LOCATE INLETS AND MANHOLES WITH REFERENCE TO PAVING PLANS.
3. ALL CONCRETE UNLESS OTHERWISE NOTED SHALL BE "SACK CONCRETE". THIS INCLUDES CONCRETE BASE FOR ASPHALTIC STREETS.
4. CONTRACTOR IS TO TAKE WHATEVER PRECAUTIONS THE ENGINEER DEEMS NECESSARY (SHIELDING, SHIELDING, E.C.) TO INSURE THAT ALL TREES IN THE VICINITY OF CONSTRUCTION ARE PROTECTED FROM DAMAGE (COSTS TO BE INCIDENTAL TO COSTS OF PIPE).
5. ENGINEER SHALL ARRANGE FOR ALL IRONS SUBJECT TO REMOVAL PRIOR TO SUCH REMOVAL AND SHALL REPLACE IRONS AT COMPLETION OF CONSTRUCTION.
6. K.C. & E. SHALL BE INFORMED WHEN WORK IS TO BE PERFORMED IN THE VICINITY OF K.C. & E. BURIED CABLES. THE UNCOVERING, RAISING AND REPLACING OF K.C. & E. CABLE SHALL BE DONE UNDER THE SUPERVISION OF K.C. & E. REPRESENTATIVES. CONTACT K.C. & E. UNDERGROUND DEPARTMENT AT 261-248.





Concrete Flume Detail

STORM WATER SEWER 163
 CITY OF WICHITA, KS
 DEAN SELLERS - ACTING CITY ENGINEER
 Project No. _____
 468-76-245-80764-000-000-001
 Date _____