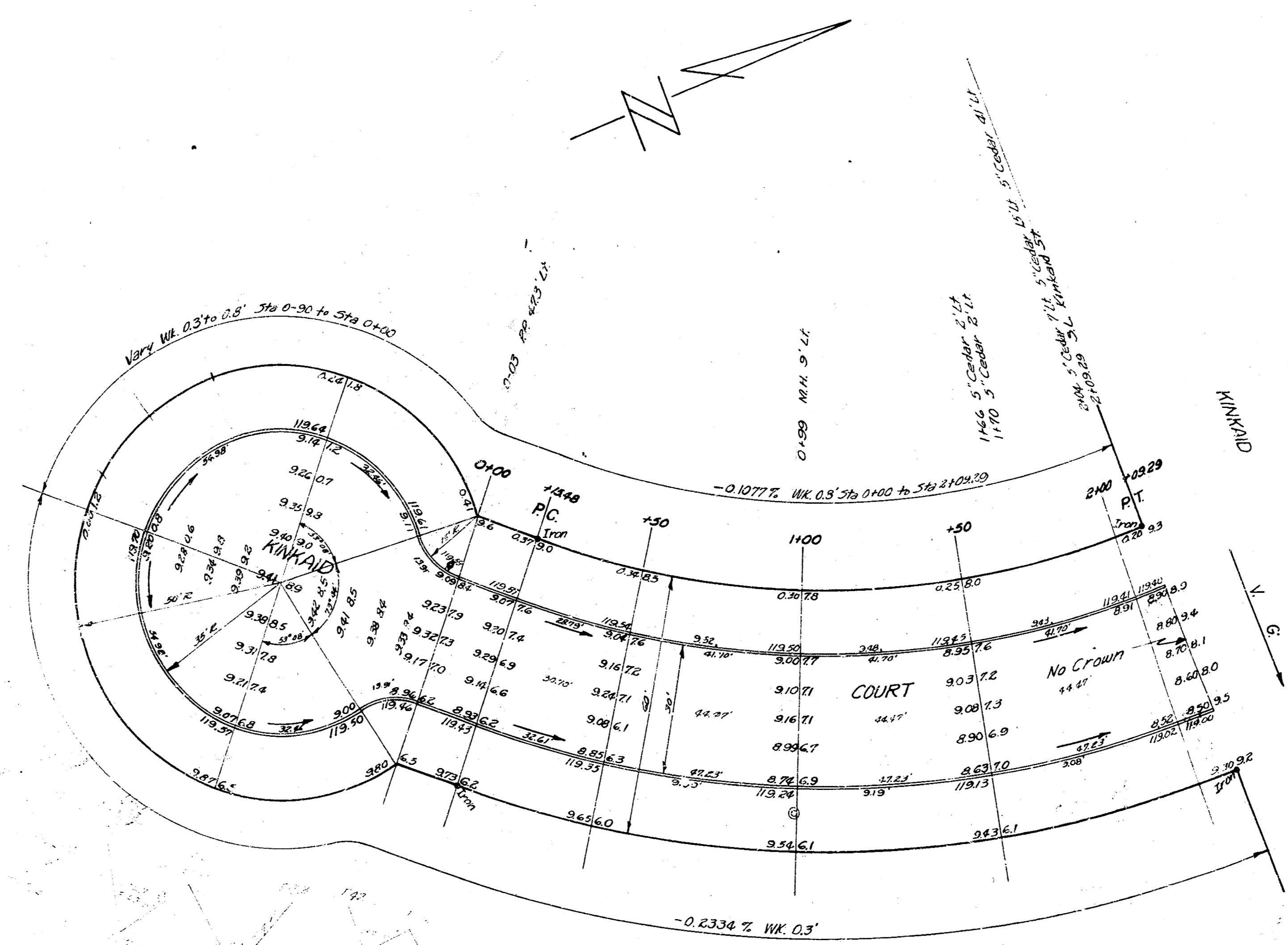


B.M. 117.50 NW Cor. 1st Stop Ho with grey shingle siding SE side Hinkaid Court  
 B.M. 116.80 RR spike W face PP 3.5' cor. Hinkaid Court  
 B.M. 121.75 'N' in Mueller fire ply NW cor. Bullard & Geo Wash Blvd.  
 Stationing on E.R.



JAC  
 JAPS

Curve Data from Sta 0+15.48 to Sta 2+09.29  
 $R = 211.28$   
 $\Delta = 40.56$

Sta	Arc Length	Chord Length	Chord Bearing	Defl $\alpha$	Sta/Defl $\alpha$
0+15.48 PC					
+50	39.52'	33.36'	28.02°	3°38'45"	3°38'45"
+75	25	24.12'	20.29°	2°58'24"	6°17'09"
+100					8°55'33"
+125					11°33'57"
+150					14°12'21"
+175					16°50'45"
+200					19°29'09"
+209.29 PT	9.29'	8.38'	7.54°	0°58'51"	20°28'28"



**KINKAID COURT**  
 30' CONC & CB.  
 CITY OF WICHITA KANSAS  
 B.E. SMITH CITY ENGINEER  
 APRIL 1954 PROJ. NO. C13-209