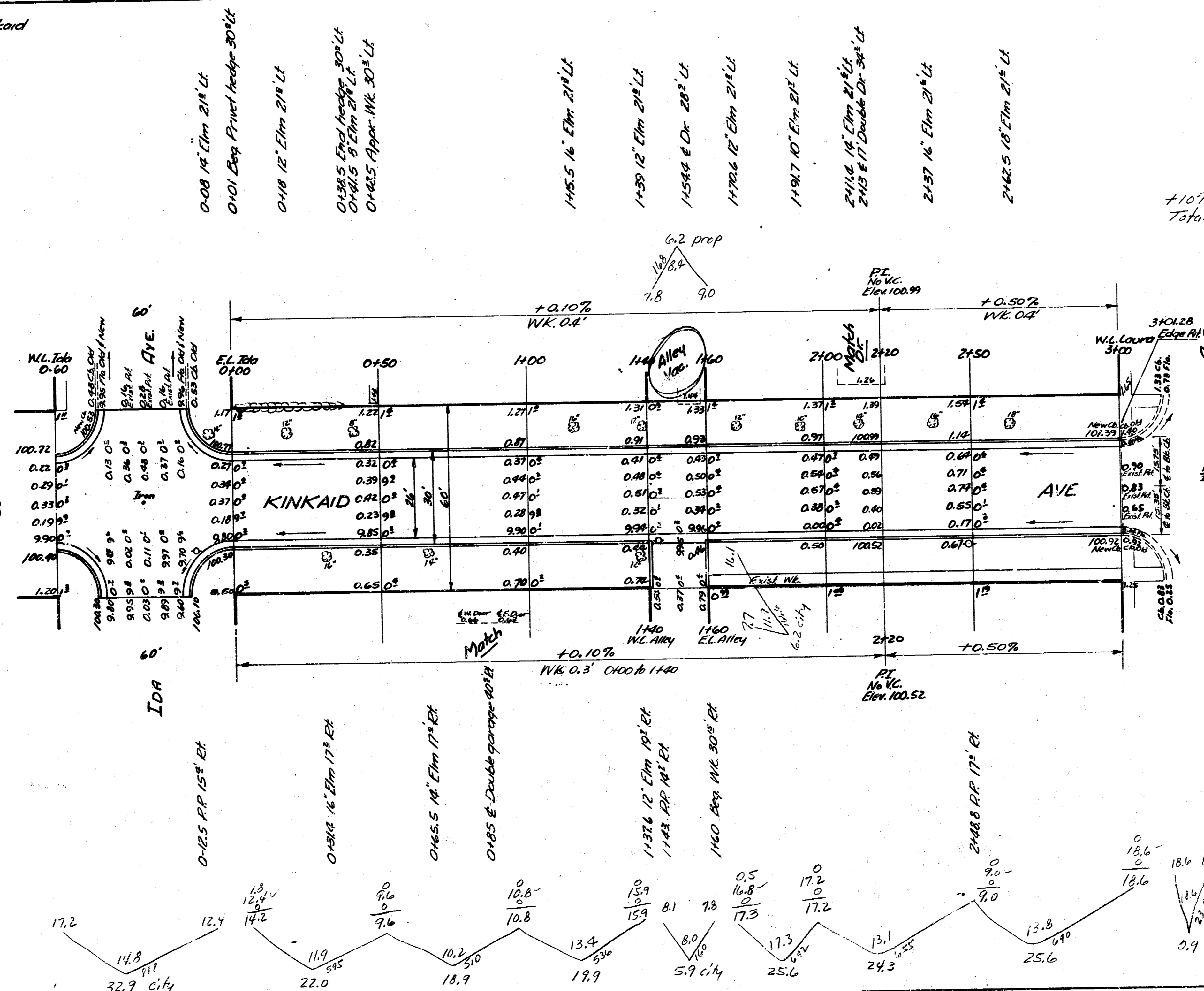


B.M. 103.28 "T" in Troy top F.P. S.W. Cor Ida & Kinkaid

TIES TO IRON & IDA & KINKAID
 1. 34.83' NW to 5' in Globe W. cb. Ida.
 2. 34.68' NE to 5' in Globe E. cb. Ida.
 3. 30.55' SW to "T" in Troy F.P. S.W. Cor.

Note: B.M. for profile, not same as on profile. Set grades set from B.M. on plan.

Survey by B.E. Smith
 F.P. & W.D. DEC
 Licensed



Excav.

Prep.	21.4
22.0	11.8
18.9	10.3
19.9	32.9
25.6	5.1
24.3	6.2
25.6	5.1
6.2	5.1
142.5 cu. yds.	68.0 cu. yds.
+10% 14.3	+10% 6.8
Total 156.8 cu. yds.	Total 74.8 cu. yds.

KINKAID AVE.
 W.L. IDA TO W.L. LAURA
 26-2-30 AC.

CITY OF WICHITA, KANSAS
 B.E. SMITH CITY ENGINEER
 JAN. 20, 1953 Proj. No. CR-200