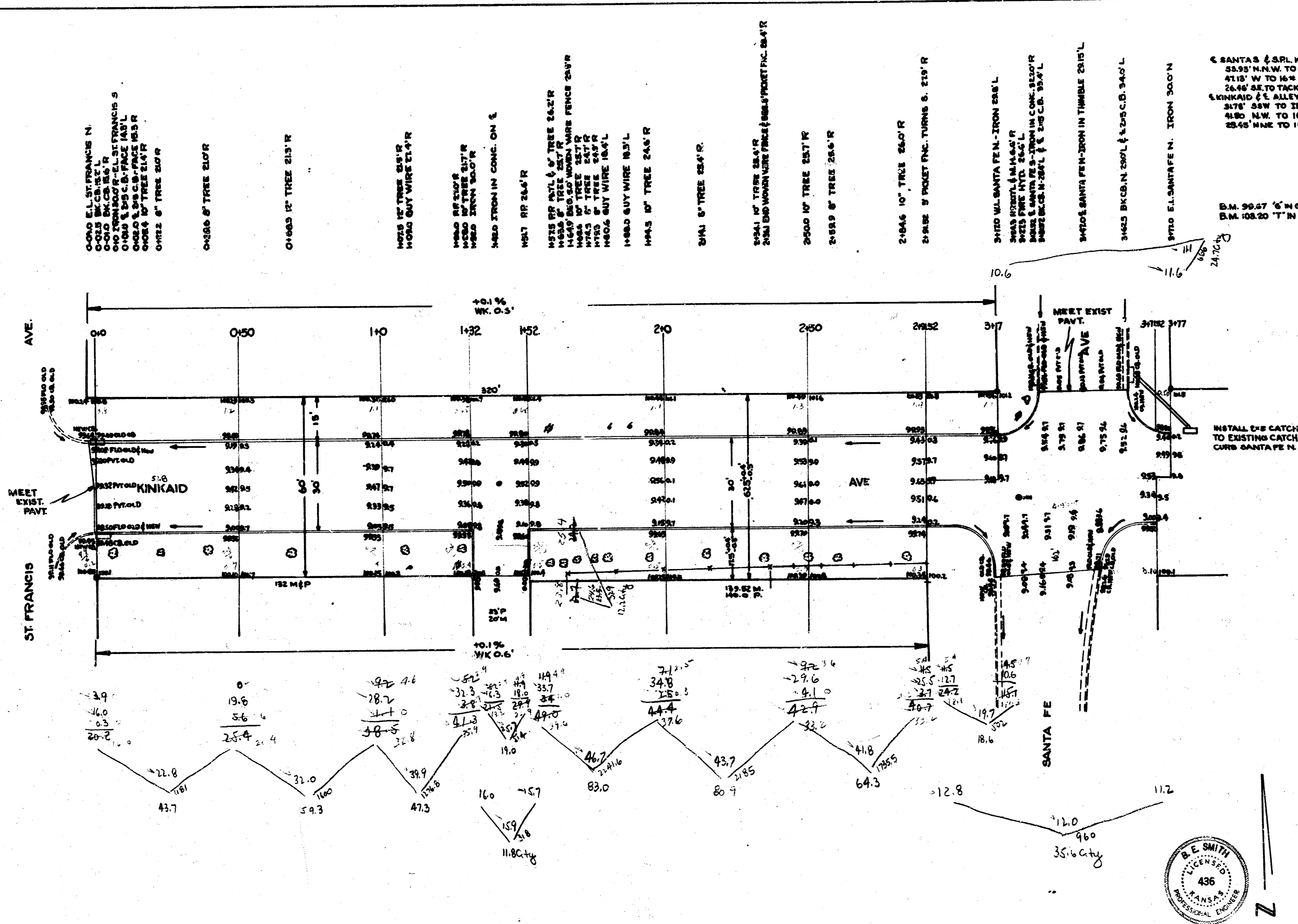


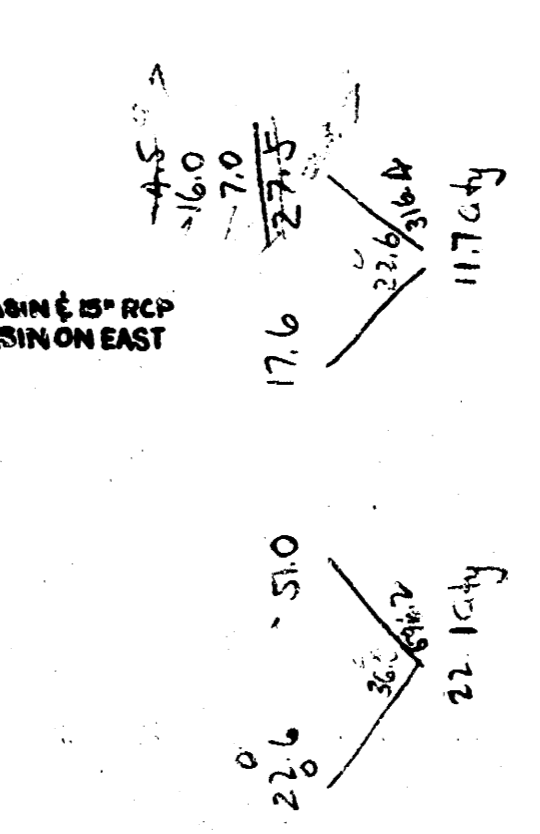
P.C.S.	C.D.
437	11.8
473	11.2
150	21.6
93.0	24.7
82.9	11.7
18.6	18.1
416.1	71.7
10.1	119.9
4577	

Survey 1/20
Plan 100'
Checked
B.E. SMITH



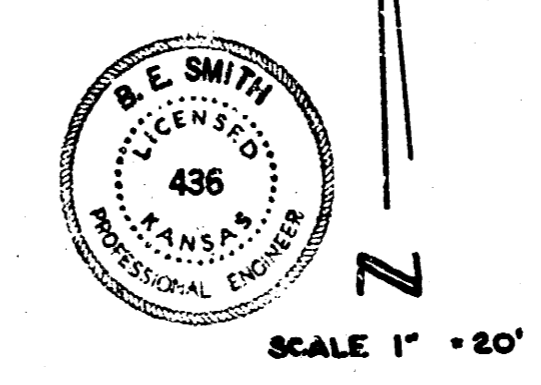
TIES TO IRONS
 C. SANTA FE & S.P.L. KINKAID -
 53.95' N.W. TO 16" SPIKE E.S. PP.
 41.15' W. TO 16" SPIKE N. SIDE 10' ELM.
 24.44' SE TO TREE STAKE E.S. OF CH. CROWN STAKE E.S.S. OF END OF E.C.G. SANTA FE S.
 KINKAID & L. ALLEY S. BET. ST. FRANCIS & SANTA FE
 24'1" SW TO IRON WIRE ALLEY
 16.50' N.W. TO 16" SPIKE S. SIDE OF 7TH POST FROM WEND ON N. SIDE PL.
 25.55' N.W. TO 16" SPIKE N.W. SIDE P.P.

B.M. 30.27 4" IN GLOBE TOP C&N.C.D. KINKAID W OF W.L. ST. FRANCIS
 B.M. 108.20 "T" IN TROY FIRE HYD. NW COR. SANTA FE & KINKAID



KINKAID AVE.
 E.L. ST. FRANCIS TO E.L. SANTA FE
 30' CONC. & C.B.

CITY OF WICHITA, KANSAS
 B.E. SMITH CITY ENGINEER
 APRIL 1953 PROJ. NO. C-12-239



SCALE 1" = 50'