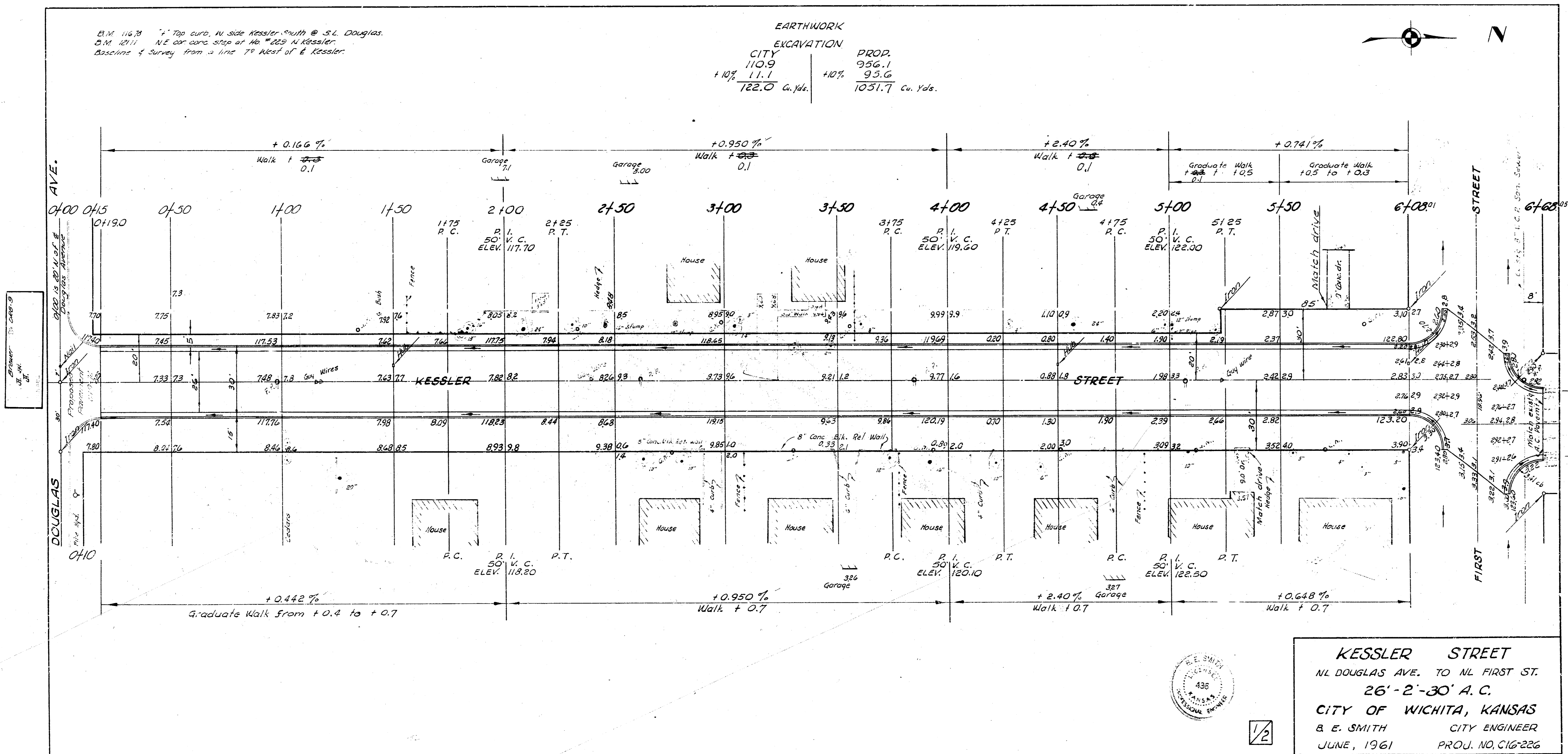


B.M. 116.3 1" Top curb, N. side Kessler, South @ S.L. Douglas.  
 O.M. 121.1 N.E. cor curb stop at No. 225 W. Kessler.  
 Baseline of survey from a line 79 West of E. Kessler.

| EARTHWORK      |                 |
|----------------|-----------------|
| EXCAVATION     |                 |
| CITY           | PROP.           |
| 110.9          | 956.1           |
| +10% 11.1      | +10% 95.6       |
| 122.0 Cu. Yds. | 1051.7 Cu. Yds. |



1/2

**KESSLER STREET**  
 N.L. DOUGLAS AVE. TO N.L. FIRST ST.  
 26'-2"-30" A.C.  
 CITY OF WICHITA, KANSAS  
 B. E. SMITH CITY ENGINEER  
 JUNE, 1961 PROJ. NO. CIG-226