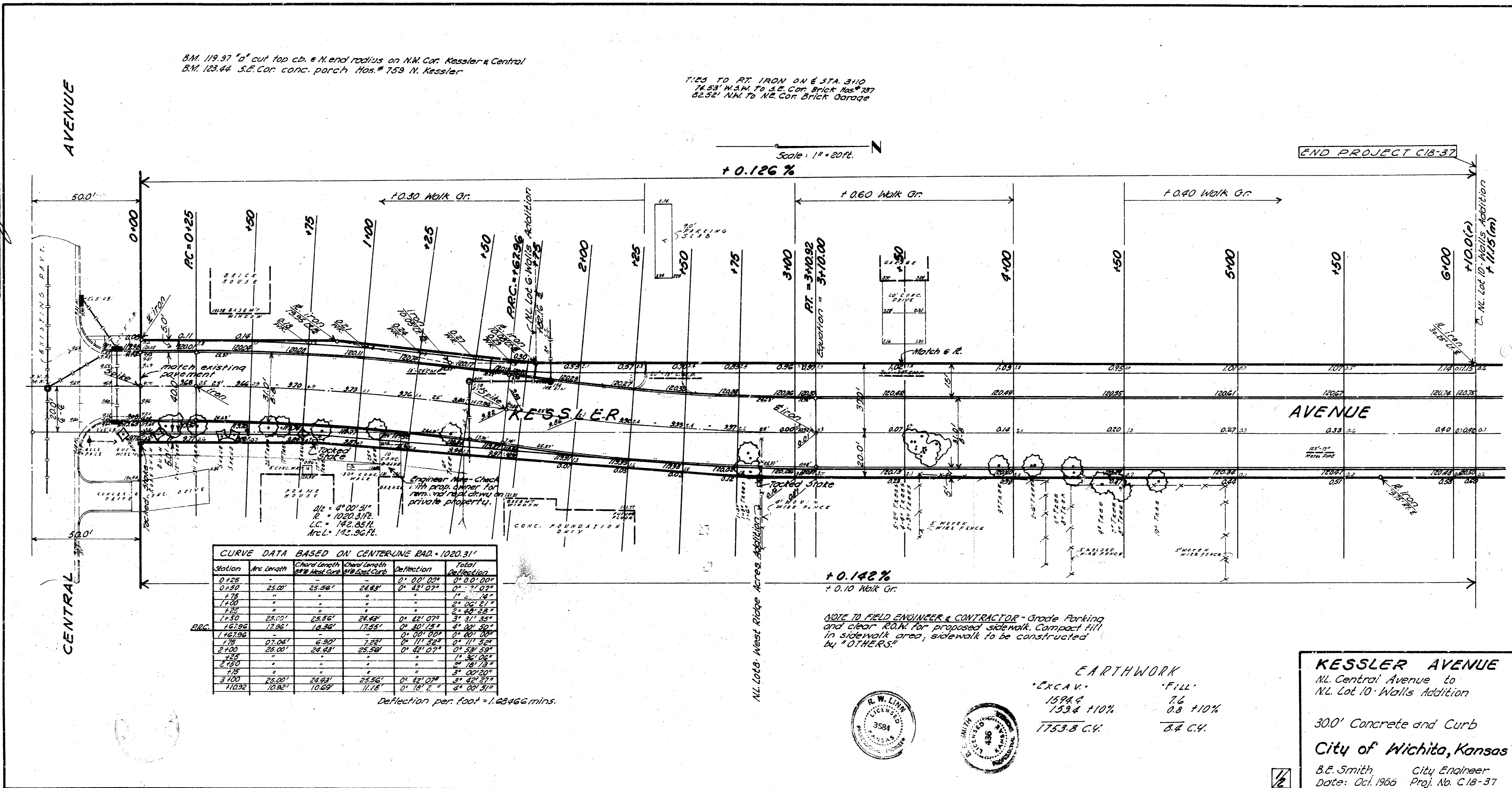


B.M. 119.37 "a" cut top ch. @ N. end radius on NW Cor. Kessler & Central
 B.M. 123.44 S.E. Cor. conc. porch Hous. # 759 N. Kessler

1125 TO PT. IRON ON E STA. 310
 74.53' N.M. TO S.E. Cor. Brick Hous. # 287
 82.32' N.M. TO N.E. Cor. Brick Garage

Scale: 1" = 20ft.
 +0.126%



CURVE DATA BASED ON CENTERLINE RAD. = 1020.31'

Station	Arc Length	Chord Length	Chord Length	Deflection	Total
		Off Road	On Road		Deflection
0+156				0° 00' 00"	0° 00' 00"
0+150	25.00'	25.00'	25.00'	0° 02' 07"	0° 02' 07"
1+00					
1+00				0° 02' 07"	0° 04' 14"
1+50	25.00'	25.00'	25.00'	0° 02' 07"	0° 06' 21"
1+50	25.00'	25.00'	25.00'	0° 02' 07"	0° 08' 28"
1+62.96	17.96'	17.96'	17.96'	0° 02' 07"	0° 10' 35"
1+62.96				0° 02' 07"	0° 12' 42"
1+62.96	07.04'	6.99'	7.39'	0° 01' 52"	0° 14' 50"
2+00	25.00'	25.00'	25.00'	0° 02' 07"	0° 16' 57"
2+00					0° 19' 04"
2+50					0° 21' 11"
2+50					0° 23' 18"
3+00	25.00'	25.00'	25.00'	0° 02' 07"	0° 25' 25"
3+00					0° 27' 32"
3+10.32	10.32'	10.29'	11.12'	0° 01' 52"	0° 29' 39"

Deflection per foot = 1.83466 mins.

NOTE TO FIELD ENGINEER & CONTRACTOR - Grade Parking and clear R.O.M. for proposed sidewalk. Compact fill in sidewalk area, sidewalk to be constructed by "OTHERS"

EARTHWORK
 EXCAV. 1584.4
 153.8 +10%
 1738.2 C.Y.
 FILL 7.6
 0.8 +10%
 8.4 C.Y.



KESSLER AVENUE
 N.L. Central Avenue to
 N.L. Lot 10 - Walls Addition
 300' Concrete and Curb
 City of Wichita, Kansas
 B.E. Smith City Engineer
 Date: Oct. 1966 Proj. No. C18-37

Survey Station
 Plan
 Checked
 1/28/66