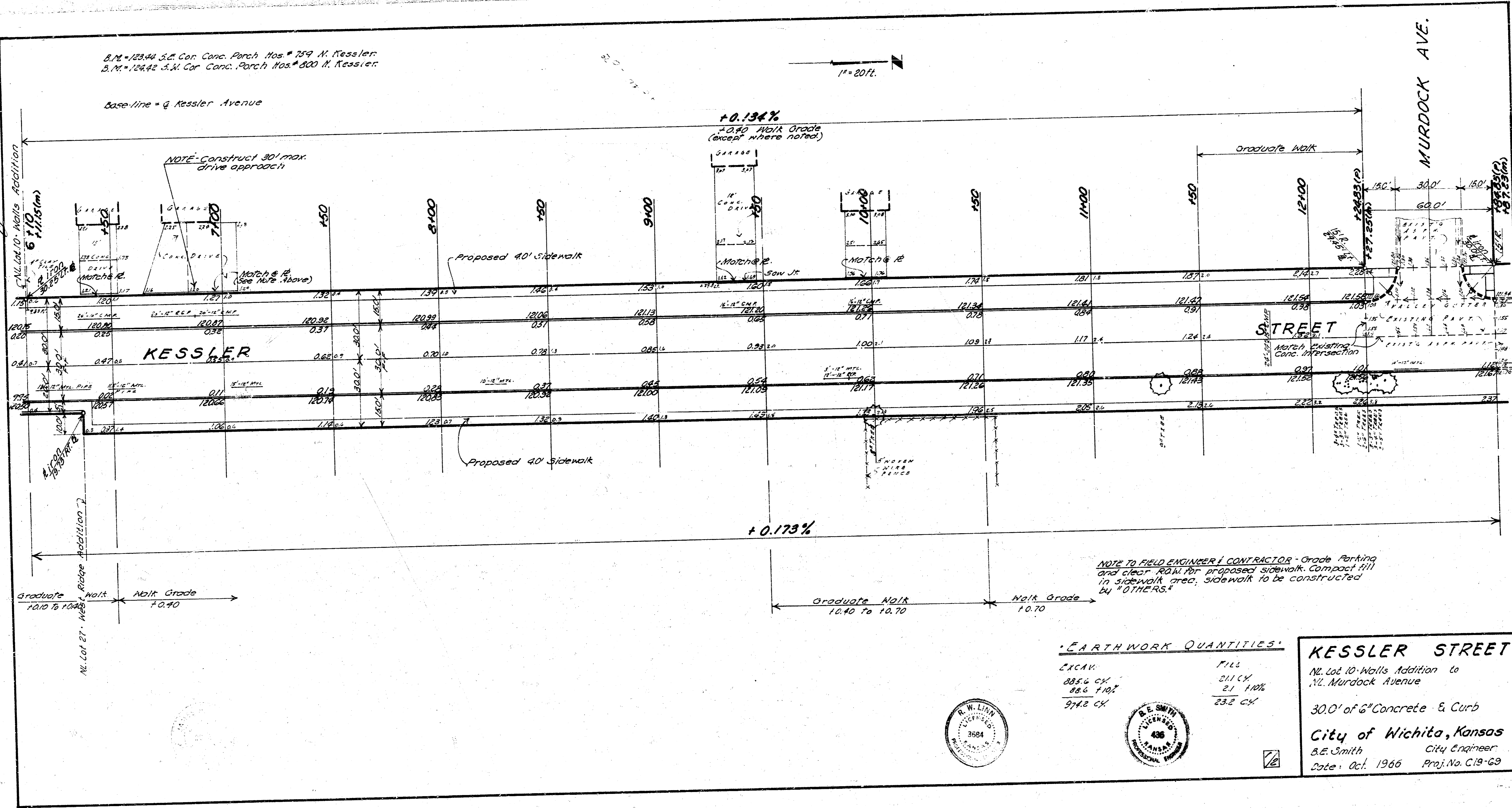


B.M. = 123.44 S.E. Cor. Conc. Parch. Nos. # 759 N. Kessler.
 B.M. = 124.42 S.W. Cor. Conc. Parch. Nos. # 800 N. Kessler.

Base line = g Kessler Avenue

1" = 20' L.

Survey
 Plan
 Exc.
 Show
 1/2" = 10' L.



+0.134%
 10.40 Walk Grade
 (except where noted)

+0.173%

NOTE TO FIELD ENGINEER & CONTRACTOR - Grade Parking and clear ROW for proposed sidewalk. Compact fill in sidewalk area, sidewalk to be constructed by "OTHERS."

EARTHWORK QUANTITIES

EXCAV.	FILL
885.4 CY	211 CY
82.6 F10%	21 F10%
974.2 CY	23.2 CY

KESSLER STREET

N. Lot 10 - Walls Addition to N. Murdock Avenue
 30.0' of 6" Concrete & Curb
 City of Wichita, Kansas
 B.E. Smith City Engineer
 Date: Oct. 1966 Proj. No. C19-69

