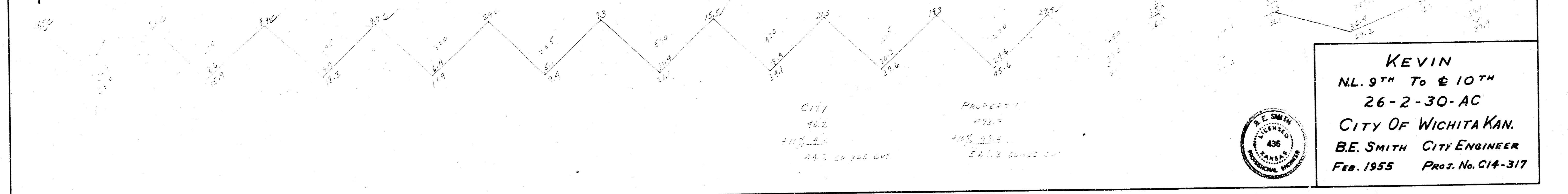
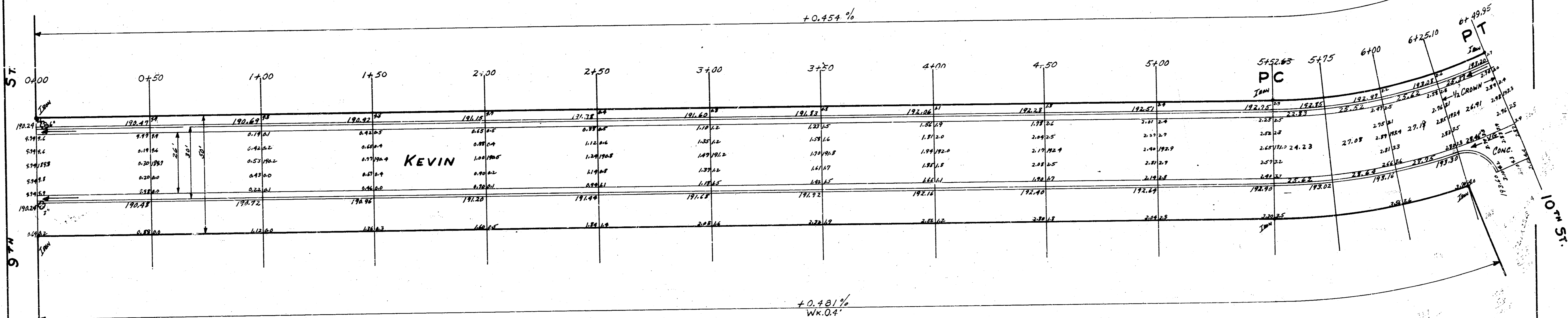
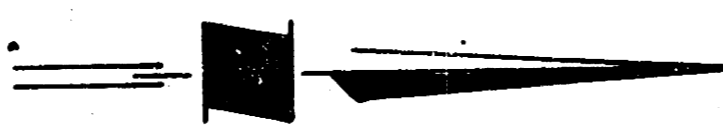


B.M. 190.93 S. 5' IN GLOBE W. CR. LIGHTNER N.L. 9TH ST.
 C.M. 192.45 BRIDGE SPIRE E.S. POWER POLE W. BANK OF DRAINAGE CHANNEL
 W.S. KEVIN & S.L. 10TH ST.
 STATION & BASE LINE WEST LINE OF KEVIN.

CURVE DATA BASED ON WEST PROP. LINE R=240.48 Δ=23°12'

STATION	CHORD S' OFFSET E.C.	CHORD S' OFFSET W.C.	DEF. Δ	TOTAL CURV.
5+52.65				
5+75	26.17	22.36	2° 39' 46"	2° 39' 46"
6+00	29.24	24.99	2° 58' 33"	5° 38' 19"
6+25.10	29.37	25.09	2° 59' 12"	8° 37' 35"
6+49.95	29.07	24.84	2° 57' 29"	11° 35' 4"



KEVIN
 N.L. 9TH To & 10TH
 26-2-30-AC
 CITY OF WICHITA KAN.
 B.E. SMITH CITY ENGINEER
 FEB. 1955 Proj. No. C14-317



CITY
 40.2
 44.2 100.00 OUT
 PROPOSED
 472.0
 54.2 2.000 OUT