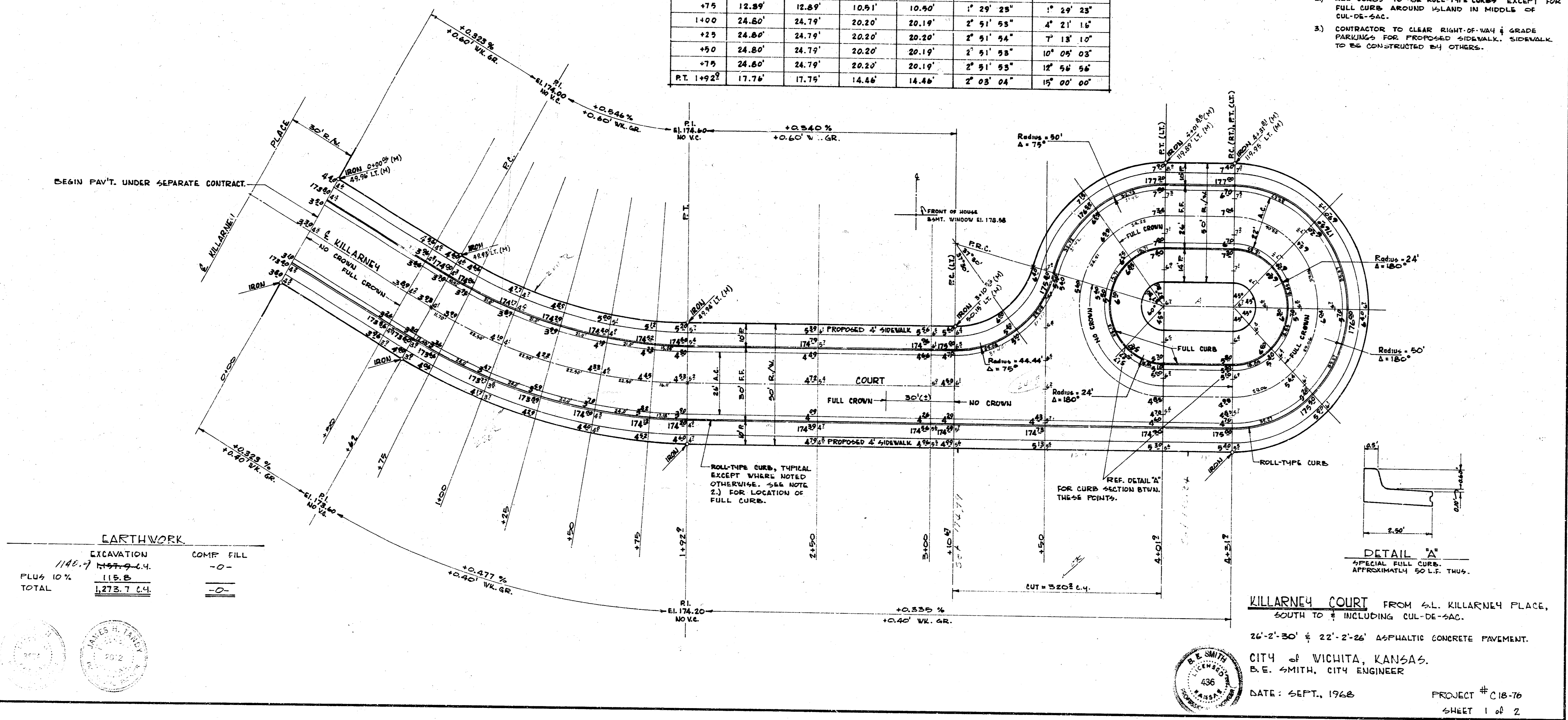


B.M. 170.03 "D" CUT TOP E. CL. DOREEN @ S. END RADIUS ON A.E. COR. RUTLAND & DOREEN.  
 B.M. 169.77 "R" N. RITCHIE TOP N. CL. RUTLAND RD. 140' W. of V.L. DOREEN @.  
 BASE LINE: SOUTH R.

CURVE DATA: BASE ON WEST R. R=250' Δ=20° DEFLECTION = 6.87549 MIN./FT.

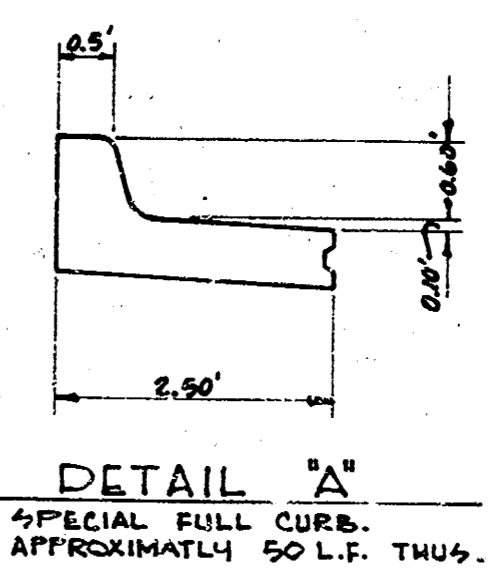
STATION	8' OFFSET FROM FACE OF WEST CURB.		8' OFFSET FROM FACE OF EAST CURB.		DEFLECTION	ACCUMULATED DEFLECTION
	ARC	CHORD	ARC	CHORD		
P.L. 0+62	-	-	-	-	-	-
+75	12.89'	12.89'	10.91'	10.40'	1° 29' 23"	1° 29' 23"
+100	24.80'	24.79'	20.20'	20.19'	2° 51' 53"	4° 21' 16"
+25	24.80'	24.79'	20.20'	20.19'	2° 51' 53"	7° 13' 10"
+50	24.80'	24.79'	20.20'	20.19'	2° 51' 53"	10° 09' 03"
+75	24.80'	24.79'	20.20'	20.19'	2° 51' 53"	12° 56' 56"
P.T. 1+92.2	17.76'	17.75'	14.46'	14.46'	2° 03' 04"	15° 00' 00"

- GENERAL NOTES:
- 1) ALL DISTANCES ARE BASED ON PLATTED DISTANCES, EXCEPT MEASURED DISTANCES WHICH ARE NOTED BY THE SYMBOL (M) FOLLOWING THE DISTANCE.
  - 2) ALL CURVES TO BE ROLL-TYPE CURBS EXCEPT FOR FULL CURBS AROUND ISLAND IN MIDDLE OF CUL-DE-SAC.
  - 3) CONTRACTOR TO CLEAR RIGHT-OF-WAY & GRADE PARKINGS FOR PROPOSED SIDEWALK. SIDEWALK TO BE CONSTRUCTED BY OTHERS.



EARTHWORK

	EXCAVATION	COMP. FILL
1146.7	1146.7	0
PLUS 10%	115.8	0
TOTAL	1273.7	0



KILLARNEY COURT FROM S.L. KILLARNEY PLACE,  
 SOUTH TO INCLUDING CUL-DE-SAC.  
 26'-2'-30" & 22'-2'-26" ASPHALTIC CONCRETE PAVEMENT.  
 CITY of WICHITA, KANSAS.  
 B.E. SMITH, CITY ENGINEER  
 DATE: SEPT. 1968  
 PROJECT # C18-76  
 SHEET 1 of 2

SURVEY J.E.B.  
 DRAWN C.A.A.  
 CHECKED J.E.B.

