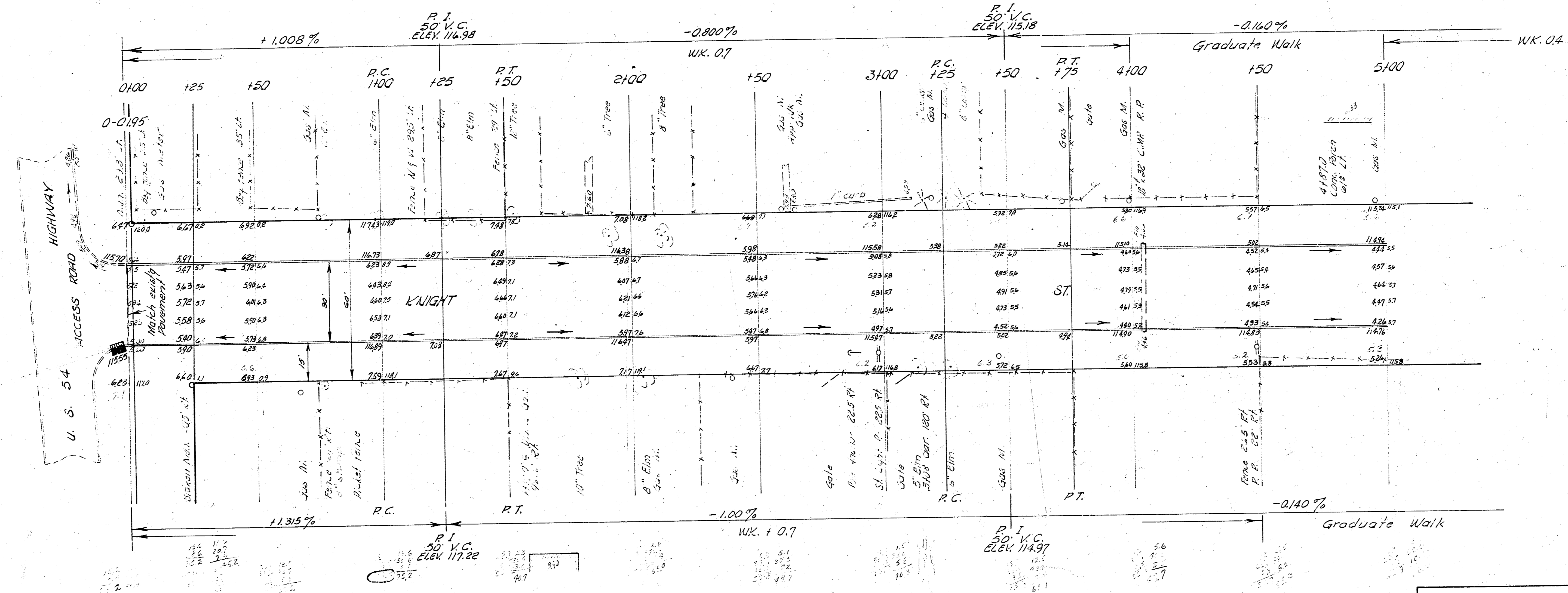


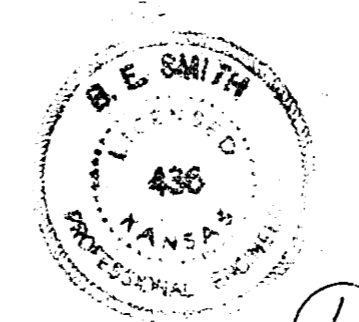
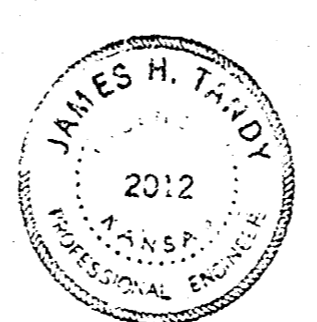
B. M. 117009 Sid. on west side betw. Slabs of West St. & U. S. 54 Highway.
 B. M. 11605 "+" on S. cb Access Road in line with W. cb Knight St.
 Base line of stationing on E. Knight St.

SCALE 1"=20'



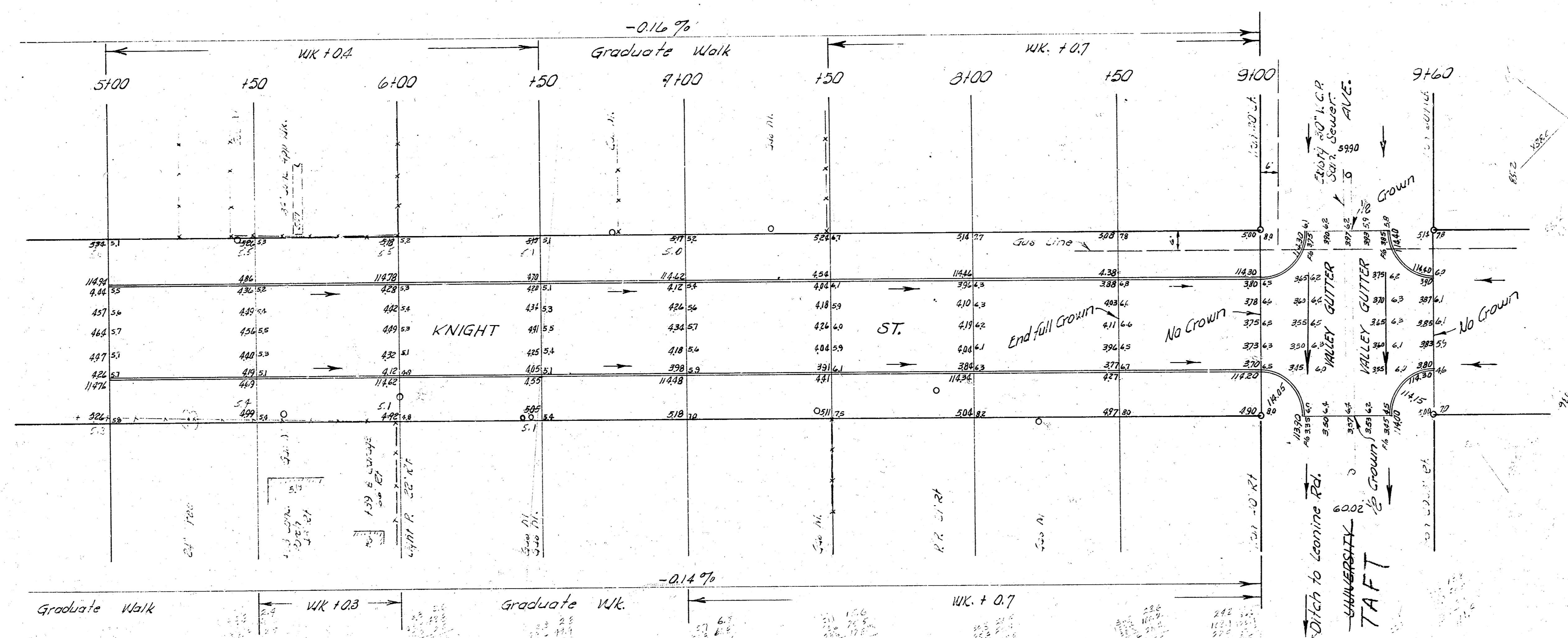
Revised 11-10-57
 C. M. 11-10-58
 J. L. G.

KNIGHT ST.
 NL U.S. 54 HIGHWAY TO NL UNIVERSITY
 30' CONC. & CB
 CITY OF WICHITA, KANSAS
 B. E. SMITH CITY ENGINEER
 SEPT. 1958, PROJ. NO. C13-53



1/2

SCALE 1"=20'



EXCAVATION

CITY	PROP.
+10% 376.1	2600.5
+10% 37.6	260.1
413.7 Cu Yds. 2,360.6 Cu Yds.	

KNIGHT ST.
U.S. 54 HIGHWAY TO UNIVERSITY

(2/6)

PROJ. NO. C18-53