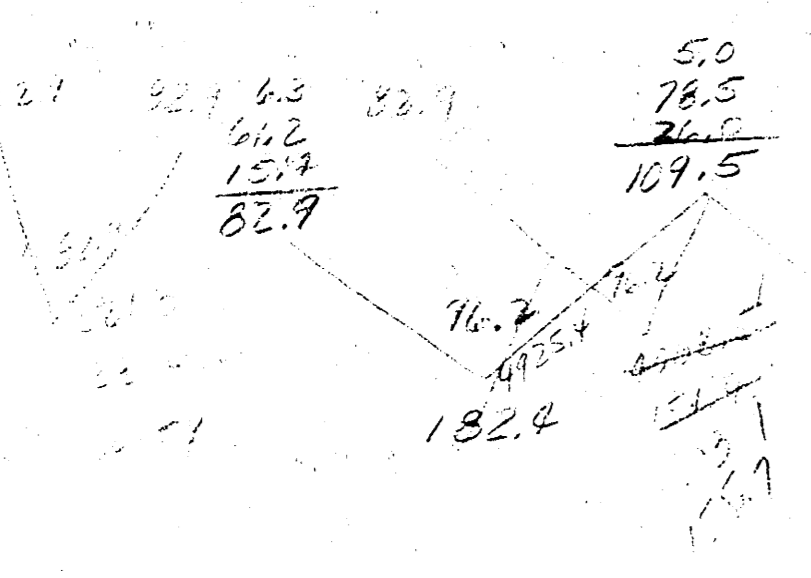
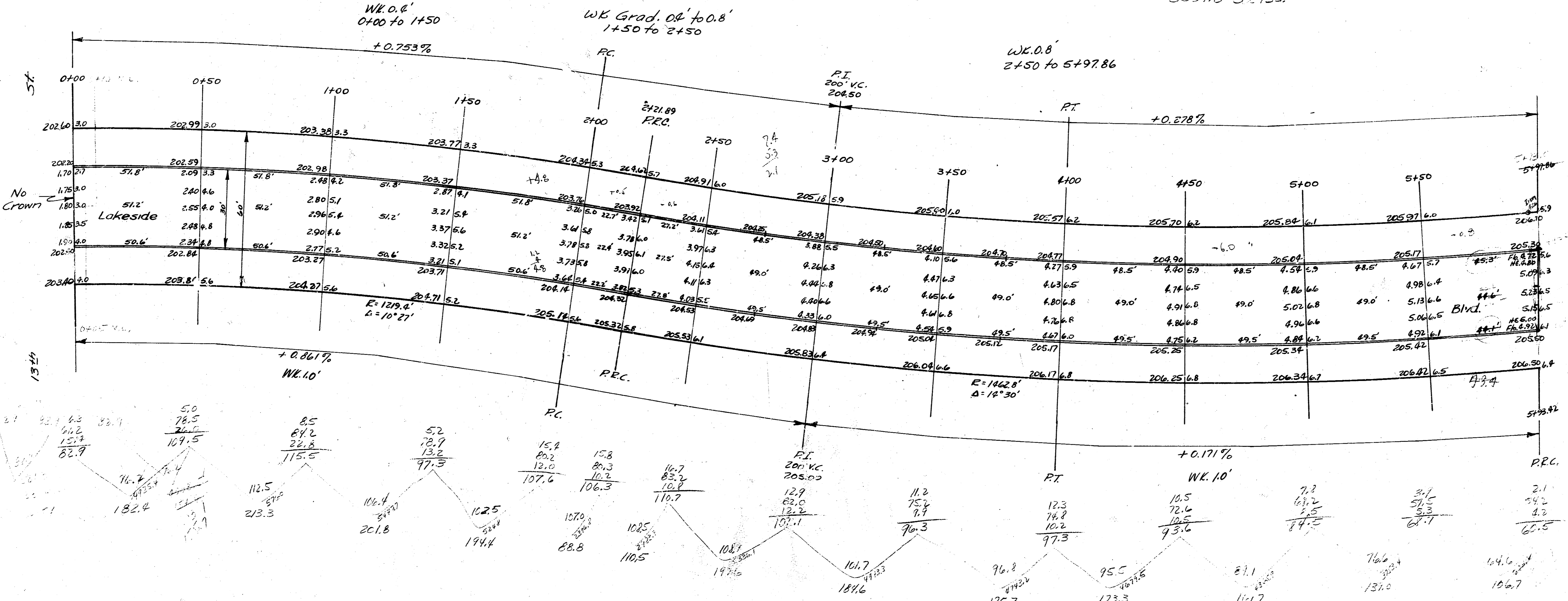


B.M. 211.7 Top iron E.L. Hawes N.L. 14th

NOTE: Stationing is on E.P.L.
Grades set on Ch. line distances

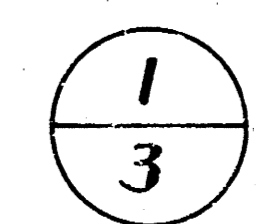
Grand Total	
Prop.	City
2342.8	181.2
755.8	0.00 Yds.
456.2	
3554.8	0.00 Yds.

211.7
181.2
25.2
20.4
18.4
36.3
116.5
172.0
124.6
175.7
21.3
151.7
15.7
217.1
11.0
2342.8



NOTE: Install drain pipe under intersection of Lakeside Blvd & 13th St. N.L. 13th. Connect Conc. Pvt. of Lakeside to pvt. of 13th with Asph.

Lakeside Blvd.
N.L. 13th ST-S.L. Crestview Dr.
30' Conc. & Cb.
City of Wichita, Kansas
L.K. White City Engineer
Oct. 1948 Proj. No. C18-143





Prop.	St.
15.3	21.1
21.2	21.1
25.5	21.1
25.4	21.1
24.0	21.1
23.0	21.1
22.5	21.1
21.6	21.1
20.6	21.1
19.5	21.1
18.1	21.1
16.7	21.1
15.3	21.1
13.9	21.1
12.5	21.1
11.1	21.1
9.7	21.1
8.3	21.1
6.9	21.1
5.5	21.1
4.1	21.1
2.7	21.1
1.3	21.1
0.0	21.1
-1.3	21.1
-2.7	21.1
-4.1	21.1
-5.5	21.1
-6.9	21.1
-8.3	21.1
-9.7	21.1
-11.1	21.1
-12.5	21.1
-13.9	21.1
-15.3	21.1
-16.7	21.1
-18.1	21.1
-19.5	21.1
-20.6	21.1
-21.6	21.1
-22.5	21.1
-23.0	21.1
-24.0	21.1
-25.4	21.1
-25.5	21.1
-21.2	21.1
-15.3	21.1
0.0	21.1
15.3	21.1
30.6	21.1
45.9	21.1
61.2	21.1
76.5	21.1
91.8	21.1
107.1	21.1
122.4	21.1
137.7	21.1
153.0	21.1
168.3	21.1
183.6	21.1
198.9	21.1
214.2	21.1
229.5	21.1
244.8	21.1
260.1	21.1
275.4	21.1
290.7	21.1
306.0	21.1
321.3	21.1
336.6	21.1
351.9	21.1
367.2	21.1
382.5	21.1
397.8	21.1
413.1	21.1
428.4	21.1
443.7	21.1
459.0	21.1
474.3	21.1
489.6	21.1
504.9	21.1
520.2	21.1
535.5	21.1
550.8	21.1
566.1	21.1
581.4	21.1
596.7	21.1
612.0	21.1
627.3	21.1
642.6	21.1
657.9	21.1
673.2	21.1
688.5	21.1
703.8	21.1
719.1	21.1
734.4	21.1
749.7	21.1
765.0	21.1
780.3	21.1
795.6	21.1
810.9	21.1
826.2	21.1
841.5	21.1
856.8	21.1
872.1	21.1
887.4	21.1
902.7	21.1
918.0	21.1
933.3	21.1
948.6	21.1
963.9	21.1
979.2	21.1
994.5	21.1
1009.8	21.1
1025.1	21.1
1040.4	21.1
1055.7	21.1
1071.0	21.1
1086.3	21.1
1101.6	21.1
1116.9	21.1
1132.2	21.1
1147.5	21.1
1162.8	21.1
1178.1	21.1
1193.4	21.1
1208.7	21.1
1224.0	21.1
1239.3	21.1
1254.6	21.1
1269.9	21.1
1285.2	21.1
1300.5	21.1
1315.8	21.1
1331.1	21.1
1346.4	21.1
1361.7	21.1
1377.0	21.1
1392.3	21.1
1407.6	21.1
1422.9	21.1
1438.2	21.1
1453.5	21.1
1468.8	21.1
1484.1	21.1
1499.4	21.1
1514.7	21.1
1530.0	21.1
1545.3	21.1
1560.6	21.1
1575.9	21.1
1591.2	21.1
1606.5	21.1
1621.8	21.1
1637.1	21.1
1652.4	21.1
1667.7	21.1
1683.0	21.1
1698.3	21.1
1713.6	21.1
1728.9	21.1
1744.2	21.1
1759.5	21.1
1774.8	21.1
1790.1	21.1
1805.4	21.1
1820.7	21.1
1836.0	21.1
1851.3	21.1
1866.6	21.1
1881.9	21.1
1897.2	21.1
1912.5	21.1
1927.8	21.1
1943.1	21.1
1958.4	21.1
1973.7	21.1
1989.0	21.1
2004.3	21.1
2019.6	21.1
2034.9	21.1
2050.2	21.1
2065.5	21.1
2080.8	21.1
2096.1	21.1
2111.4	21.1
2126.7	21.1
2142.0	21.1
2157.3	21.1
2172.6	21.1
2187.9	21.1
2203.2	21.1
2218.5	21.1
2233.8	21.1
2249.1	21.1
2264.4	21.1
2279.7	21.1
2295.0	21.1
2310.3	21.1
2325.6	21.1
2340.9	21.1
2356.2	21.1
2371.5	21.1
2386.8	21.1
2402.1	21.1
2417.4	21.1
2432.7	21.1
2448.0	21.1
2463.3	21.1
2478.6	21.1
2493.9	21.1
2509.2	21.1
2524.5	21.1
2539.8	21.1
2555.1	21.1
2570.4	21.1
2585.7	21.1
2601.0	21.1
2616.3	21.1
2631.6	21.1
2646.9	21.1
2662.2	21.1
2677.5	21.1
2692.8	21.1
2708.1	21.1
2723.4	21.1
2738.7	21.1
2754.0	21.1
2769.3	21.1
2784.6	21.1
2799.9	21.1
2815.2	21.1
2830.5	21.1
2845.8	21.1
2861.1	21.1
2876.4	21.1
2891.7	21.1
2907.0	21.1
2922.3	21.1
2937.6	21.1
2952.9	21.1
2968.2	21.1
2983.5	21.1
2998.8	21.1
3014.1	21.1
3029.4	21.1
3044.7	21.1
3060.0	21.1
3075.3	21.1
3090.6	21.1
3105.9	21.1
3121.2	21.1
3136.5	21.1
3151.8	21.1
3167.1	21.1
3182.4	21.1
3197.7	21.1
3213.0	21.1
3228.3	21.1
3243.6	21.1
3258.9	21.1
3274.2	21.1
3289.5	21.1
3304.8	21.1
3320.1	21.1
3335.4	21.1
3350.7	21.1
3366.0	21.1
3381.3	21.1
3396.6	21.1
3411.9	21.1
3427.2	21.1
3442.5	21.1
3457.8	21.1
3473.1	21.1
3488.4	21.1
3503.7	21.1
3519.0	21.1
3534.3	21.1
3549.6	21.1
3564.9	21.1
3580.2	21.1
3595.5	21.1
3610.8	21.1
3626.1	21.1
3641.4	21.1
3656.7	21.1
3672.0	21.1
3687.3	21.1
3702.6	21.1
3717.9	21.1
3733.2	21.1
3748.5	21.1
3763.8	21.1
3779.1	21.1
3794.4	21.1
3809.7	21.1
3825.0	21.1
3840.3	21.1
3855.6	21.1
3870.9	21.1
3886.2	21.1
3901.5	21.1
3916.8	21.1
3932.1	21.1
3947.4	21.1
3962.7	21.1
3978.0	21.1
3993.3	21.1
4008.6	21.1
4023.9	21.1
4039.2	21.1
4054.5	21.1
4069.8	21.1
4085.1	21.1
4100.4	21.1
4115.7	21.1
4131.0	21.1
4146.3	21.1
4161.6	21.1
4176.9	21.1
4192.2	21.1
4207.5	21.1
4222.8	21.1
4238.1	21.1
4253.4	21.1
4268.7	21.1
4284.0	21.1
4299.3	21.1
4314.6	21.1
4329.9	21.1
4345.2	21.1
4360.5	21.1
4375.8	21.1
4391.1	21.1
4406.4	21.1
4421.7	21.1
4437.0	21.1
4452.3	21.1
4467.6	21.1
4482.9	21.1
4498.2	21.1
4513.5	21.1
4528.8	21.1
4544.1	21.1
4559.4	21.1
4574.7	21.1
4590.0	21.1
4605.3	21.1
4620.6	21.1
4635.9	21.1
4651.2	21.1
4666.5	21.1
4681.8	21.1
4697.1	21.1
4712.4	21.1
4727.7	21.1
4743.0	21.1
4758.3	21.1
4773.6	21.1
4788.9	21.1
4804.2	21.1
4819.5	21.1
4834.8	21.1
4850.1	21.1
4865.4	21.1
4880.7	21.1
4896.0	21.1
4911.3	21.1
4926.6	21.1
4941.9	21.1
4957.2	21.1
4972.5	21.1
4987.8	21.1
5003.1	21.1
5018.4	21.1
5033.7	21.1
5049.0	21.1
5064.3	21.1
5079.6	21.1
5094.9	21.1
5110.2	21.1
5125.5	21.1
5140.8	21.1
5156.1	21.1
5171.4	21.1
5186.7	21.1
5202.0	21.1
5217.3	21.1
5232.6	21.1
5247.9	21.1
5263.2	21.1
5278.5	21.1
5293.8	21.1
5309.1	21.1
5324.4	21.1
5339.7	21.1
5355.0	21.1
5370.3	21.1
5385.6	21.1
5400.9	21.1
5416.2	21.1
5431.5	21.1
5446.8	21.1
5462.1	21.1
5477.4	21.1
5492.7	21.1
5508.0	21.1
5523.3	21.1
5538.6	21.1
5553.9	21.1
5569.2	21.1
5584.5	21.1
5599.8	21.1
5615.1	21.1
5630.4	21.1
5645.7	21.1
5661.0	21.1
5676.3	21.1
5691.6	21.1
5706.9	21.1
5722.2	21.1
5737.5	21.1
5752.8	21.1
5768.1	21.1
5783.4	21.1
5798.7	21.1
5814.0	21.1
5829.3	21.1
5844.6	21.1
5859.9	21.1
5875.2	21.1
5890.5	21.1
5905.8	21.1
5921.1	21.1
5936.4	21.1
5951.7	21.1
5967.0	21.1
5982.3	21.1
5997.6	21.1
6012.9	21.1
6028.2	21.1
6043.5	21.1
6058.8	21.1
6074.1	21.1
6089.4	21.1
6104.7	21.1
6120.0	21.1
6135.3	21.1
6150.6	21.1
6165.9	21.1
6181.2	21.1
6196.5	21.1
6211.8	21.1
6227.1	21.1
6242.4	21.1
6257.7	21.1
6273.0	21.1
6288.3	21.1
6303.6	21.1
6318.9	21.1
6334.2	21.1
6349.5	21.1
6364.8	21.1
6380.1	21.1
6395.4	21.1
6410.7	21.1
6426.0	21.1
6441.3	21.1
6456.6	21.1
6471.9	21.1
6487.2	21.1
6502.5	21.1
6517.8	21.1
6533.1	21.1
6548.4	21.1
6563.7	21.1
6579.0	21.1
6594.3	21.1
6609.6	21.1
6624.9	21.1
6640.2	21.1
6655.5	21.1
6670.8	21.1
6686.1	21.1
6701.4	21.1
6716.7	21.1
6732.0	21.1
6747.3	21.1
6762.6	21.1
6777.9	21.1
6793.2	21.1
6808.5	21.1
6823.8	21.1
6839.1	21.1
6854.4	21.1
6869.7	21.1
6885.0	21.1
6900.3	21.1
6915.6	21.1
6930.9	21.1
6946.2	21.1
6961.5	21.1
6976.8	21.1
6992.1	21.1
7007.4	21.1
7022.7	21.1
7038.0	21.1
7053.3	21.1
7068.6	21.1
7083.9	21.1
7099.2	21.1
7114.5	21.1
7129.8	21.1
7145.1	21.1
7160.4	21.1
7175.7	21.1
7191.0	21.1
7206.3	21.1
7221.	

