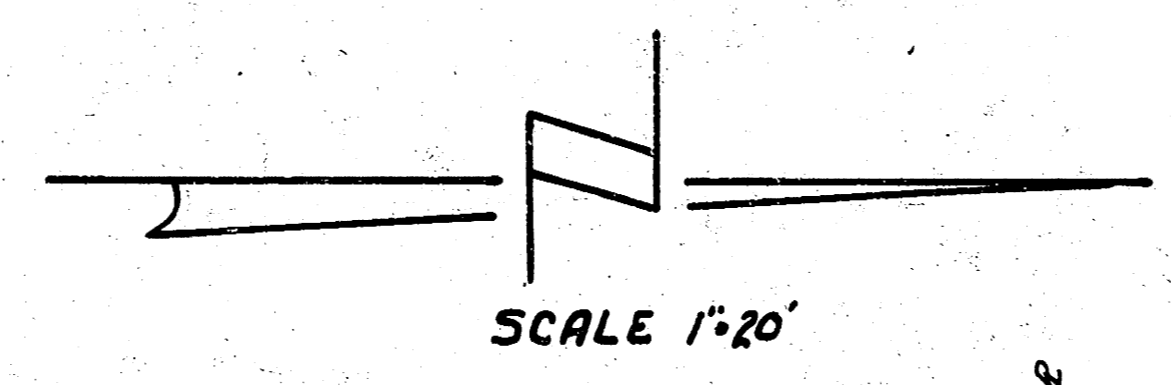


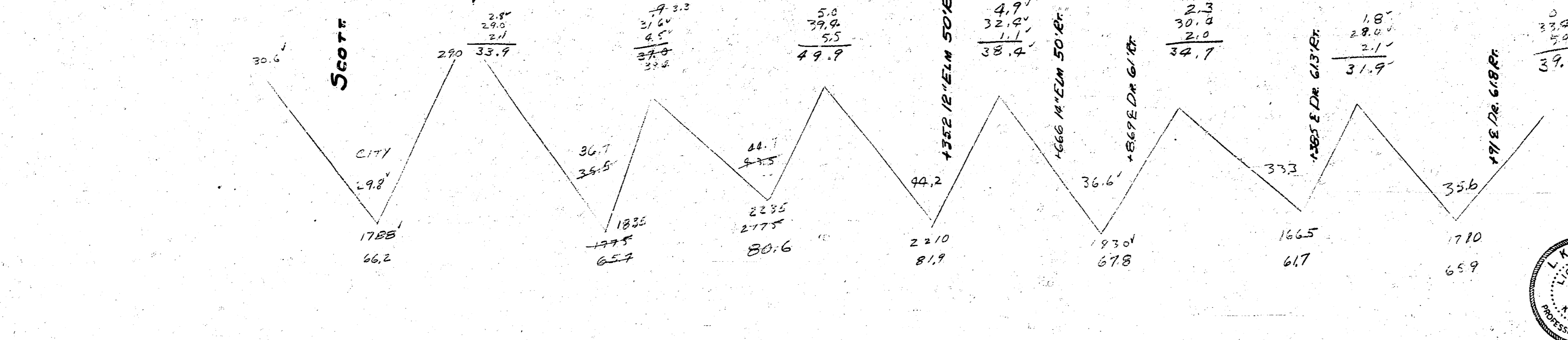
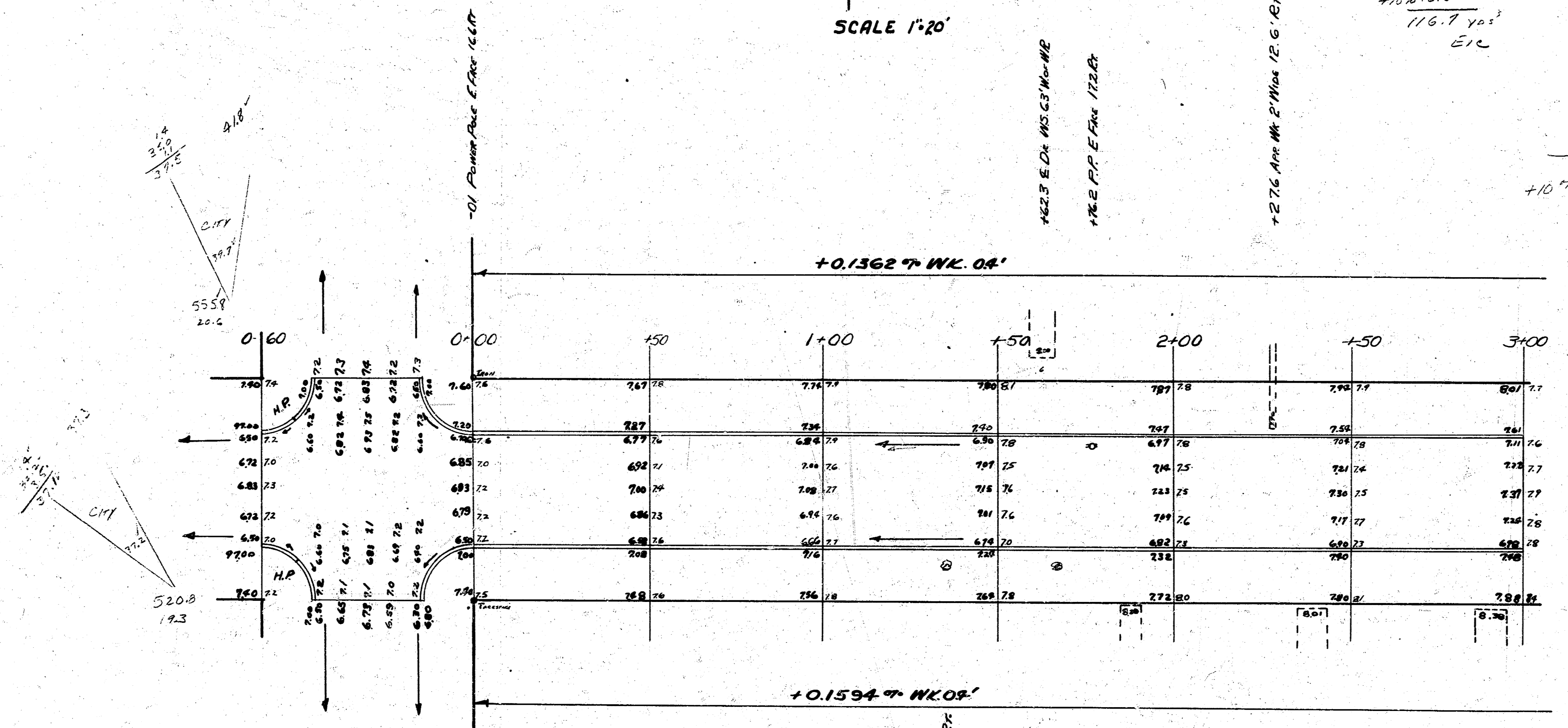
7/2-10

B.M. 99.51 "M" IN MUELLER N.W. COR. SCOTT & LAURA
B.M. 97.97 "G" IN GLOBE S. END. PRO. SE. COR. PAWNEE & LAURA
B.M. 97.62 STD. NE. COR. PAWNEE & WASHINGTON

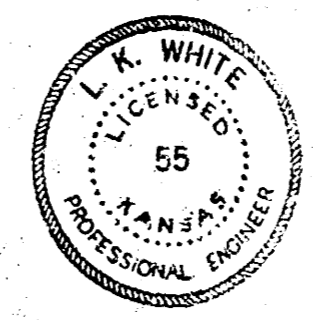


| | | |
|-----------|-------|-------|
| CITY | 66.2 | 55.7 |
| | 18.2 | 2.3 |
| | 20.6 | 5.0 |
| | 102.1 | 67.3 |
| +10% 10.6 | | 41.7 |
| | | 62.9 |
| | | 219 |
| | | 241 |
| | | 30.6 |
| | | 21.7 |
| | | 24.5 |
| | | 22.4 |
| | | 22.6 |
| | | 779.2 |
| +10.7% | | 77.9 |
| | | 857.3 |

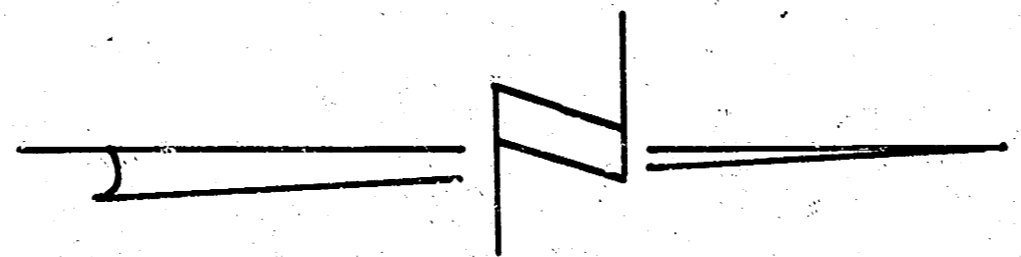
Survey 1952
Plan 1172
Mines 1420, 1425



142



Laura Ave
St. Scott to St. Pawnee
30' CONC & CB
CITY OF WICHITA, KANS.
L.K. WHITE City Engineer
Jan, 24, 1952 Proj No. C11-204



+269 HORIZ. ANGLE 57.42°
+288 PP. ELEM. 119.12'

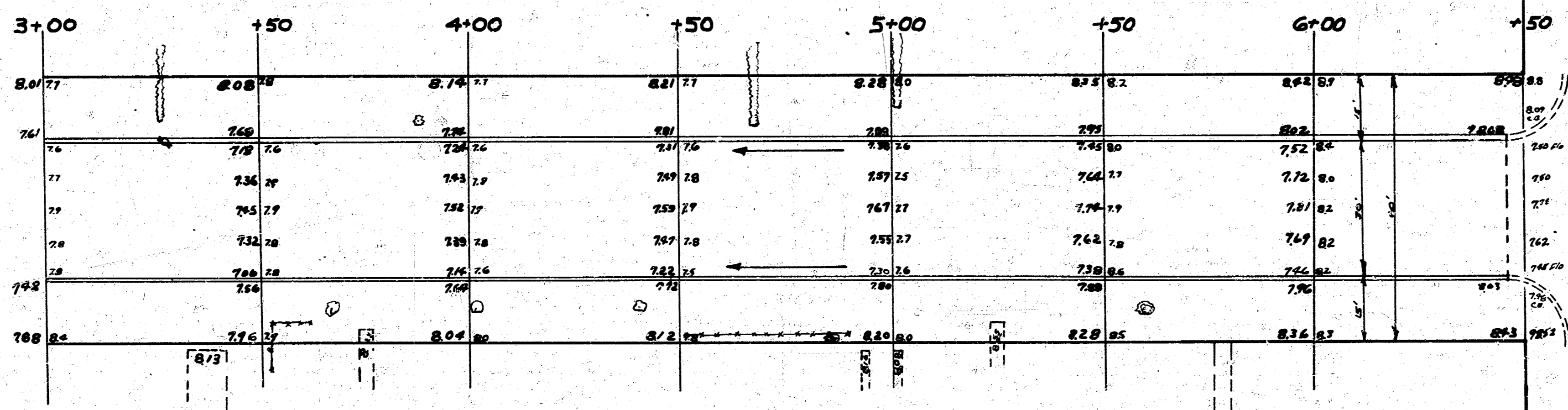
+877 10' ELEM. 101.12'

+428 HORIZ. ANGLE 118.12°

+101 HORIZ. ANGLE 76.12°

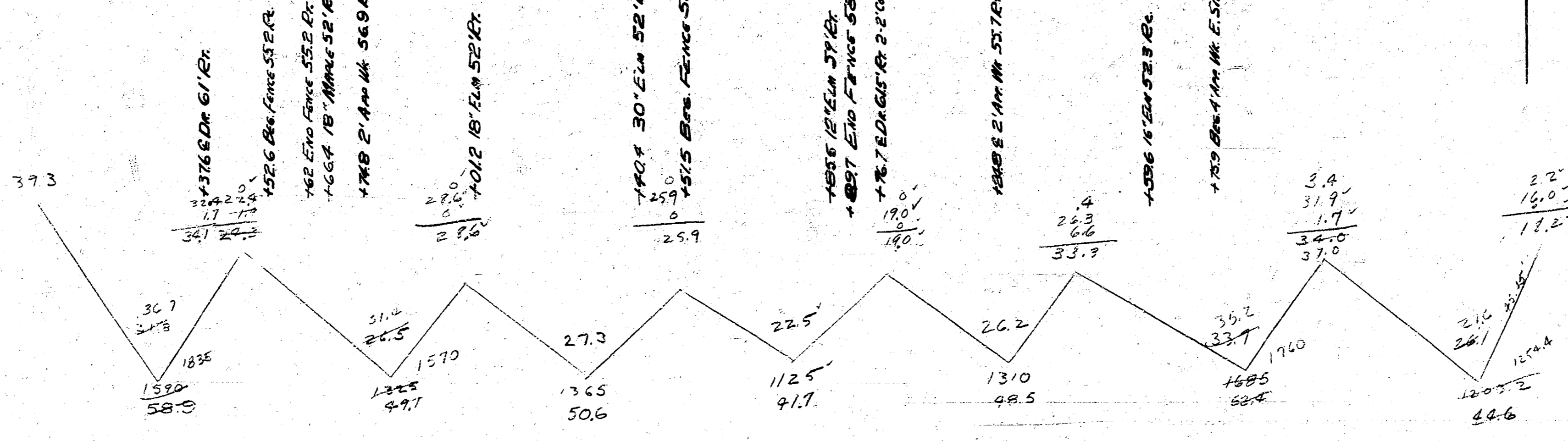
+1461 ELEM. 51.12'

+0.15627 WK. 0.4'



PAUNEE RD

+0.15627 WK. 0.4'



LAURA AVE.



CI-204

