

# STREET IMPROVEMENTS FOR LAURA CIRCLE

**FROM THE S.L. ALTA TO AND INCLUDING CUL-DE-SAC  
GALYARDT'S 6TH ADDITION**

PROJECT NO.  
472-76-245-80836-000-000-001

**GENERAL NOTES**

The Contractor shall be responsible for preserving the property irons. The contractor shall be required to re-establish any property irons which are damaged or destroyed by his construction operations. Such irons shall be re-established by a licensed land surveyor or a professional engineer in accordance with state laws.

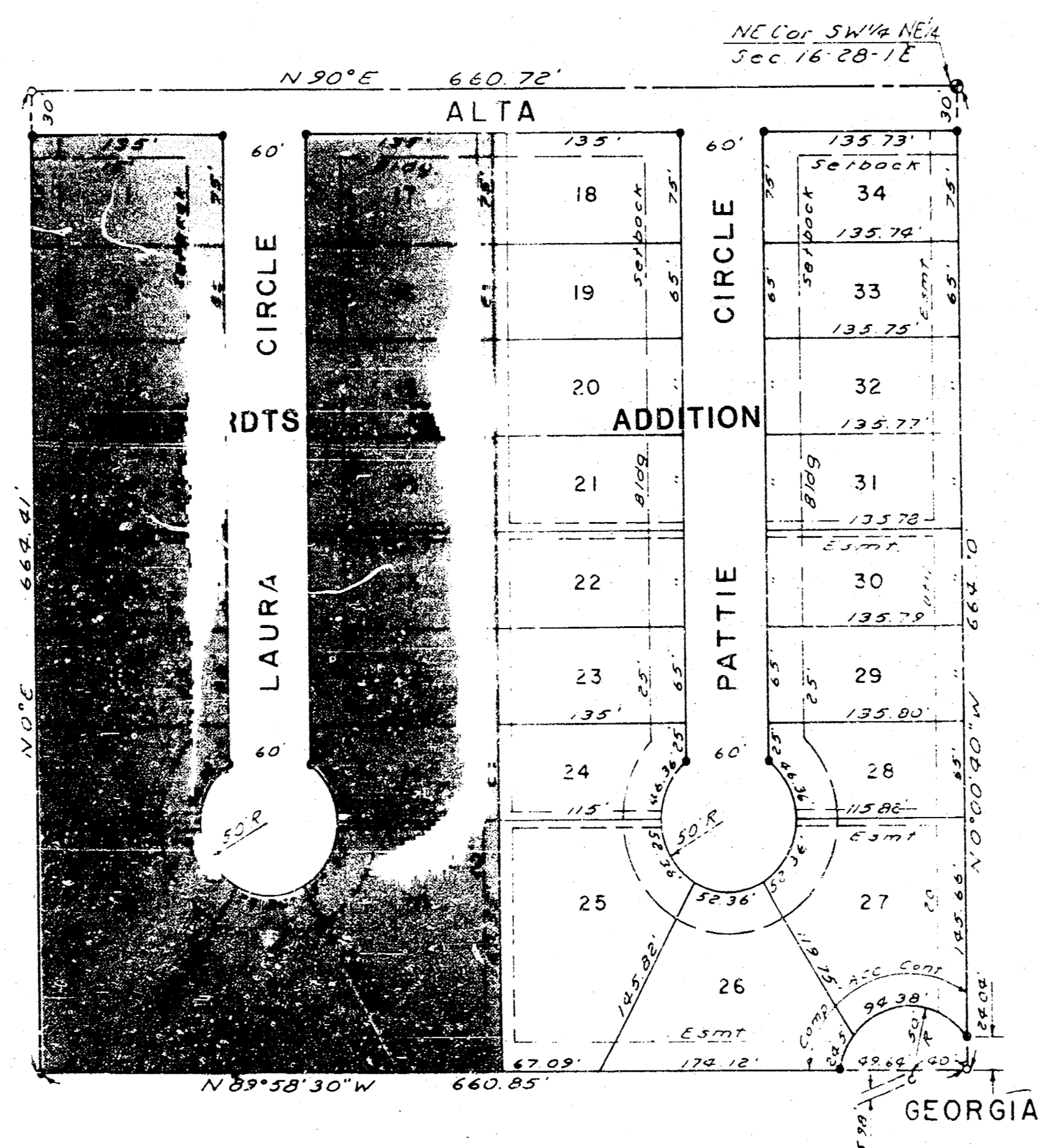
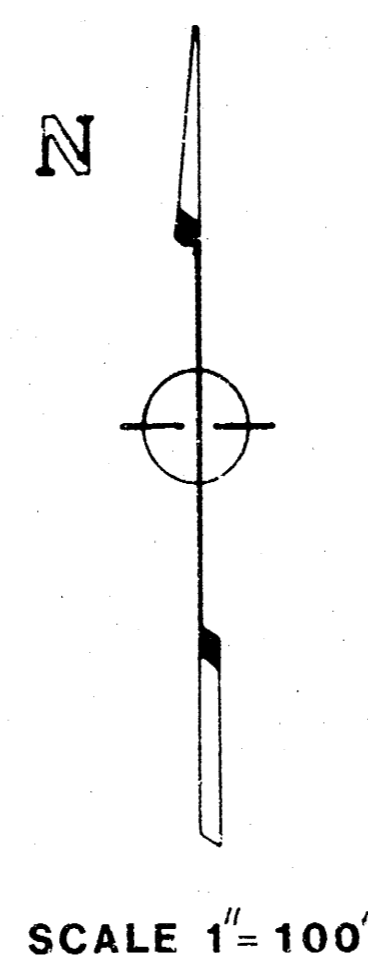
No more than 6 concrete drives shall be constructed on this project. The concrete drives shall only be constructed and paid for by this project to the property line. Any other construction behind the property lines will be arranged for by the developer.

The contractor shall contact the utility companies in order to verify any underground lines they may have in the construction vicinity prior to beginning with construction of the project.

The contractor shall contact Gaylen Nett, Netco Construction, (942-0793) prior to proceeding with the pavement construction project and also to verify the location and widths of the driveway construction to be performed on this project.

The contractor shall contact Jerry Blain, 268-4419, after completing subgrade work and before placing pavement, so the sanitary sewer may be retelevised. Sanitary sewer damaged by the contractor shall be repaired at the contractor's expense.

**CITY OF WICHITA, KS  
MICHAEL E. LINDEBAK CITY ENGINEER**



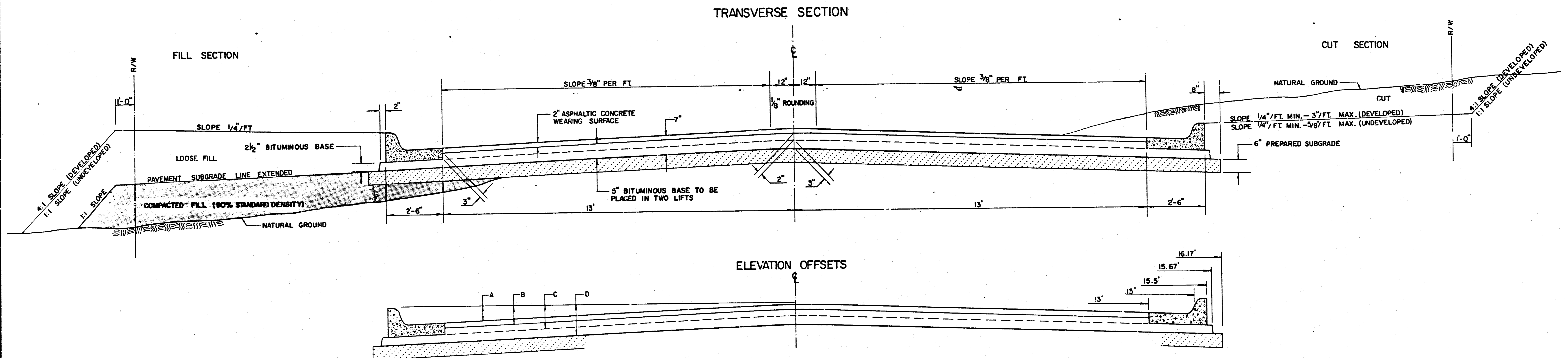
**BENCH MARKS**

- B.M. - W. Bolt of Fire Hydrant N. of Park Lawn Lane East End.  
Elevation = 87.10 City Datum.
- B.M. - " " Cut in Top Curb N End of Return at the SE Corner  
of Pattie Circle and Alta.  
Elevation = 85.61 City Datum.

JULY 1985

**BAUGHMAN COMPANY, P.A.**  
SURVEYING & ENGINEERING  
316-262-7271 • 333 LAURA • WICHITA, KANSAS 67211

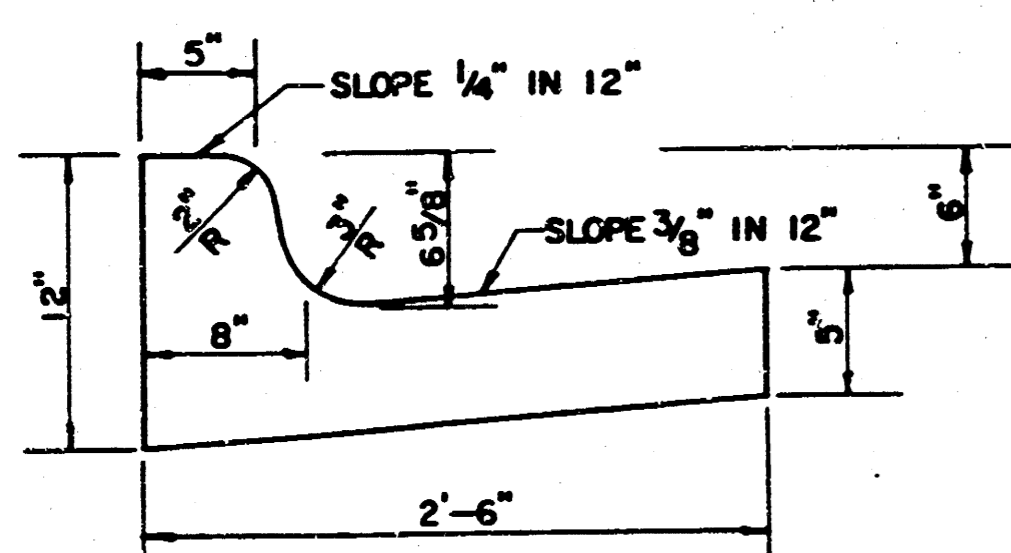
# TYPICAL 3' PAVEMENT DETAILS



ELEVATION OFFSETS

	DISTANCE FROM CENTERLINE (LT. & RT.)												
	0'	2'	4'	6'	7.5'	10'	12'	13'	15'	15.5'	15.67'	16.17'	
A: TOP OF CURBS TO TOP OF SURFACE LIFT	0.10	0.14	0.21	0.27	0.32	0.39	0.46	0.49	—	—	—	—	
B: TOP OF CURBS TO TOP OF UPPER BASE LIFT	0.27	0.31	0.38	0.44	0.49	0.56	0.63	0.66	—	—	—	—	
C: TOP OF CURBS TO TOP OF LOWER BASE LIFT	0.44	0.49	0.57	0.64	0.70	0.79	0.87	0.90	0.98	1.00	1.00	—	
D: TOP OF CURBS TO TOP OF SUBGRADE	0.69	0.73	0.80	0.87	0.93	1.01	1.08	1.12	1.19	1.21	1.21	1.23	

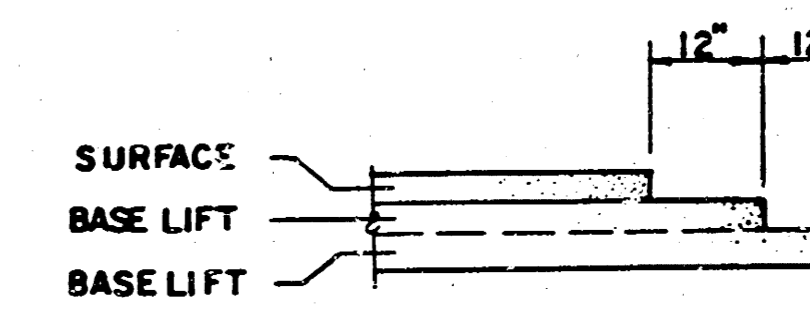
COMBINED CURB & GUTTER



## GENERAL NOTES

- 1) THE ASPHALTIC CONCRETE PAVEMENT BETWEEN THE COMBINED CURB AND GUTTER SHALL BE PAID AS SQUARE YARDS OF 7" ASPHALTIC CONCRETE (5" BITUMINOUS BASE).
- 2) THE BITUMINOUS BASE UNDER AND BEHIND THE COMBINED CURB AND GUTTER SHALL BE PAID AS SQUARE YARDS OF 2 1/2" BITUMINOUS BASE.
- 3) A TACK COAT OF EMULSIFIED ASPHALT (SC-1H OR CSS-1H) SHALL BE APPLIED AT AN APPROXIMATE RATE OF 0.05 GALLONS PER SQUARE YARD BETWEEN EACH LIFT OF ASPHALTIC MATERIAL.
- 4) BITUMINOUS BASE AND ASPHALTIC CONCRETE WEARING SURFACE SHALL BE PLACED WITH A LAYDOWN MACHINE HAVING AUTOMATIC CONTROLS FOR LINE AND GRADE.
- 5) CONSTRUCTION JOINTS IN EACH LIFT SHALL BE STAGGERED A MINIMUM DISTANCE OF ONE (1) FOOT FROM JOINTS IN PRECEDING LIFTS AND PLACED SO THAT A JOINT WILL BE CONSTRUCTED ON THE CENTERLINE OF THE TOP LIFT.
- 6) CONTRACTOR TO BID ONLY ONE SUBGRADE TREATMENT ALTERNATE WHEN ALTERNATES ARE PROVIDED IN THE PROPOSAL AND CONTRACT. THE ALTERNATE CHOSEN BY THE SUCCESSFUL BIDDER SHALL BE USED IN CONSTRUCTING THIS PROJECT.

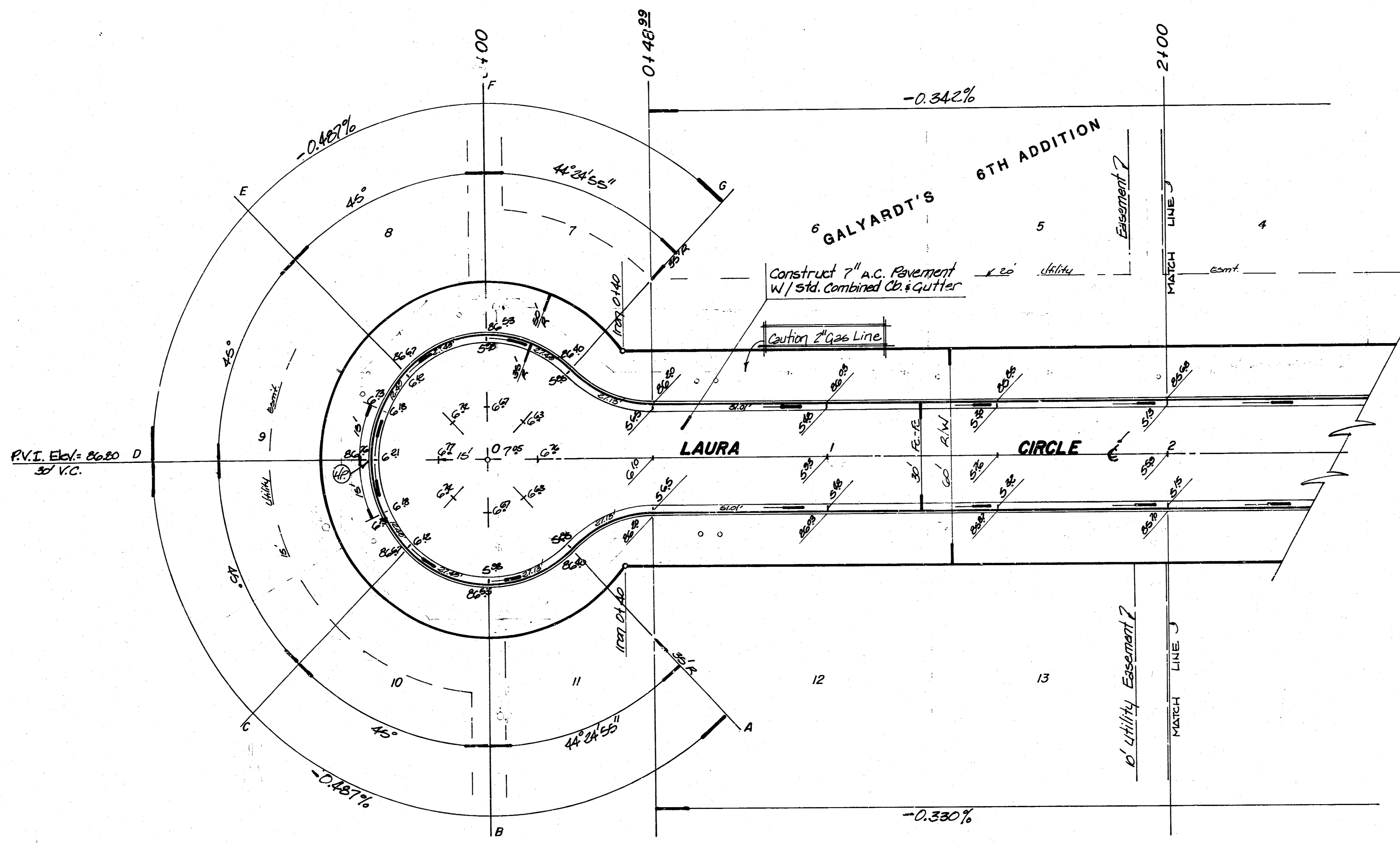
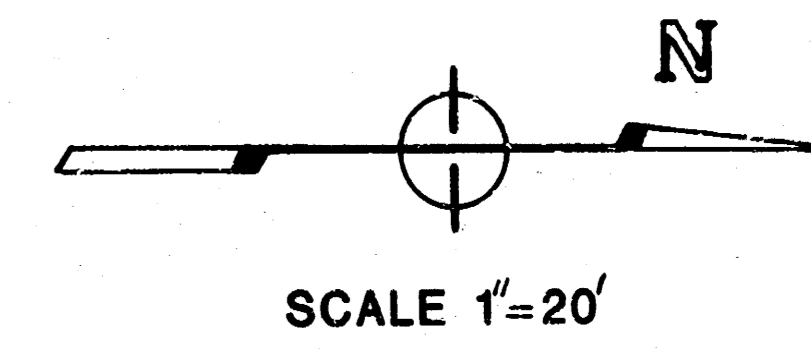
TRANSVERSE CONSTRUCTION JOINTS



TRANSVERSE CONSTRUCTION JOINTS SHALL BE CONSTRUCTED IN FLEXIBLE BASE PAVEMENTS AT LOCATIONS WHERE PAVEMENT JOINTS EXISTING FLEXIBLE BASE PAVEMENT AS SHOWN BY THE DETAIL. ALL COSTS ASSOCIATED WITH THE CONSTRUCTION OF THE TRANSVERSE JOINT SHALL BE INCLUDED IN THE BID PRICE FOR SQUARE YARDS 7" ASPHALTIC CONCRETE (5" BITUMINOUS BASE).

7 INCH RESIDENTIAL ASPHALTIC CONCRETE  
PAVEMENT WITH 5 INCH BITUMINOUS BASE  
CITY OF WICHITA, KANSAS  
PROJECT NUMBER  
472-76-245-80836-000-000-001

BENCH MARK: "□" cut in top of curb, North End return @ S.E. Corner Petite Circle and Alta, Elevation = 88.61 City Datum



**EARTHWORK QUANTITIES**

EXCAVATION = 679.0 CY	COMPACTED FILL = 28.1 CY
+ 10 % = 67.9 CY	+ 10 % = 2.8 CY
<b>TOTAL = 746.9 CY</b>	<b>TOTAL = 30.9 CY</b>

SUBGRADE MANIPULATION  
= 1993 SY

BENCH MARK: "D" Cut in top of curb, North  
End return @ S.E. Corner Parke Circle  
and Alta. Elevation: 6561 City Datum

