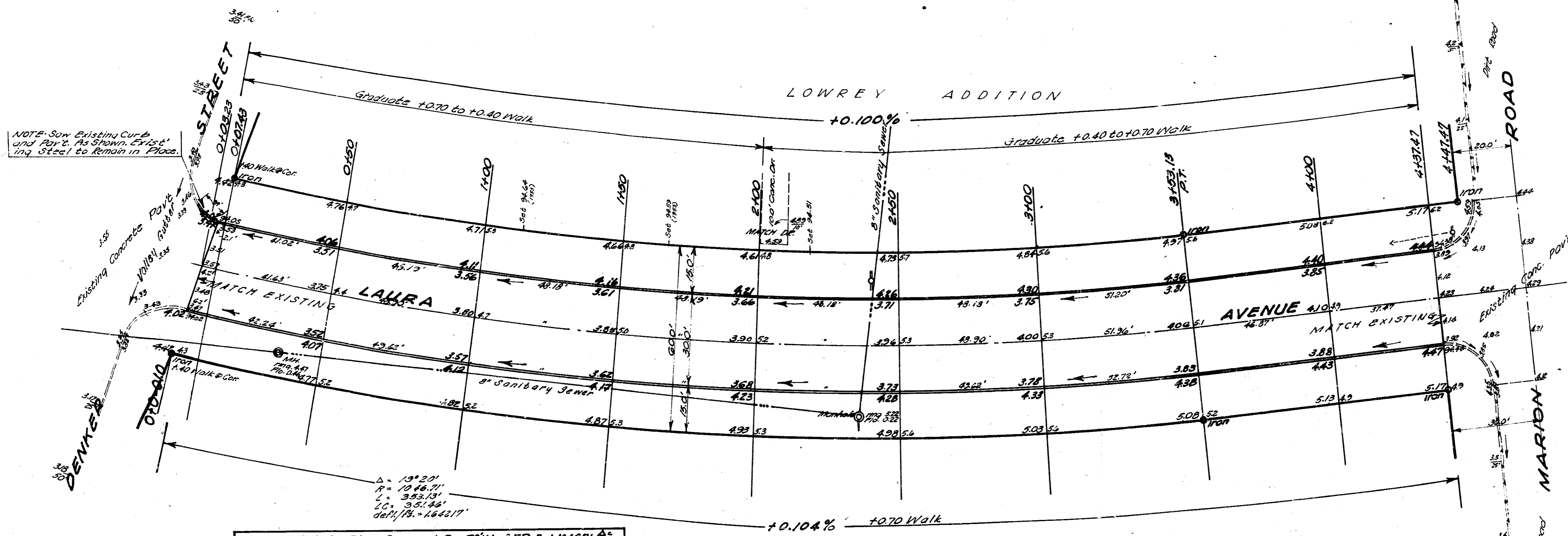
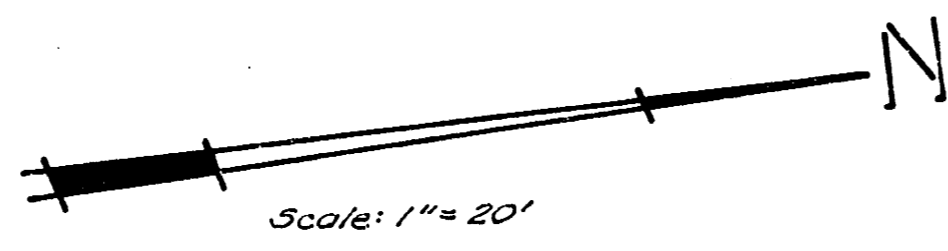


A.M. Spike ... 1125 Power Pole on S.S. Denker 11 1/2' C.R. of Patten 3552
 T.A.M. S.E. Cor. of Laura & Denker 70' in P.M.S. 33.34
 Base Line - 70' West of East Property Laura Avenue



NOTE - Saw Existing Curbs and Part As Shown. Eject Any Steel to Remain in Place.

Smith, B.E. Engineer
 1046.3
 110% 104.6
 71503 Cu 425

CURVE DATA Based On $\frac{1}{2}$ " of P.R. Rad. 1046.71 @ 20'

Station	Arc Length	Chord Length	Chord Length to Next Curb	Deflection	Total Deflection
0+00	-	-	-	0° 00' 00"	0° 00' 00"
0+25	74.3'	74.3'	71.1'	0° 12' 12"	0° 12' 12"
0+50	42.57'	42.56'	40.63'	1° 02' 54"	1° 15' 06"
1+00	50.0'	49.99'	47.79'	1° 22' 07"	2° 37' 13"
1+50	"	"	"	"	4° 03' 20"
2+00	"	"	"	"	5° 29' 27"
2+50	32.0'	31.99'	27.79'	1° 32' 07"	6° 51' 34"
3+00	32.0'	31.99'	27.79'	1° 32' 07"	8° 18' 41"
3+25	53.78'	53.78'	50.79'	1° 27' 18"	9° 39' 36"

LAURA AVE.
 N.L. Denker Str. - S.L. Marion Rd.
 30.0' Concrete & Curb
 City of Wichita, Kansas
 B.E. Smith City Engineer
 Date: APRIL 1960 Proj. No. C19-213

EXCAVATION
 Prop.
 1046.3
 110% 104.6
 71503 Cu 425

