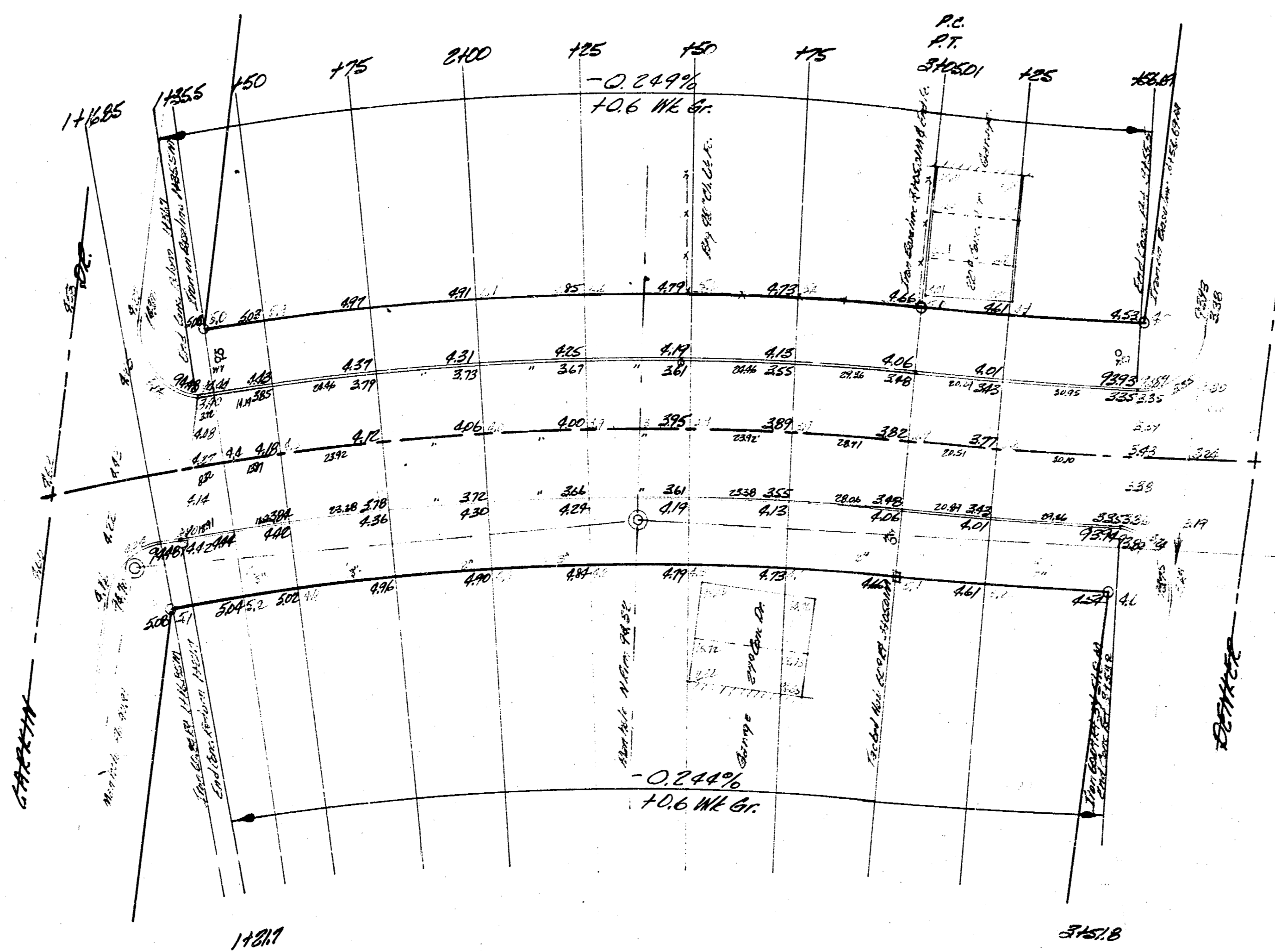
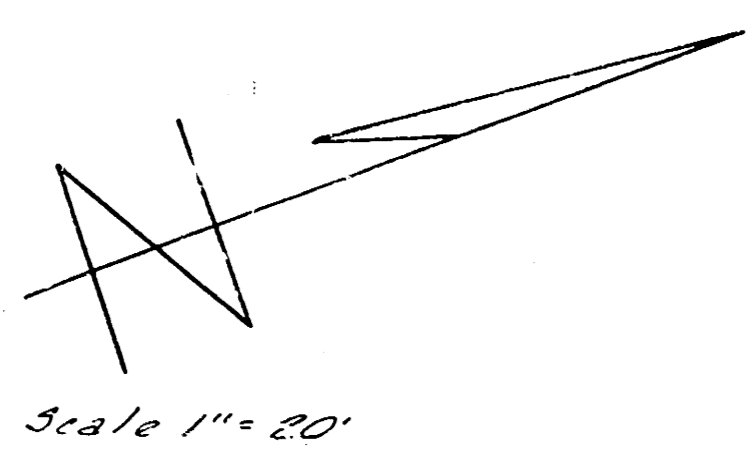


B.M. 73.75 'P' in P.H.S. Wood R. Top Ch. NW. Co. Lawrence & Maxwell  
 B.M. 74.30 'G' in Globe Top N. Ch. Larkin & W.L. Lewis



CURVE DATA BASED ON H.P. P. 674.41 Δ 25° 10'

Sta	Arc	Chord B'D Hwy Ch.	Chord B'D Prop. Ch.	Deflection	Tan Del's
PC	30.01	22.70'	27.72'	1° 14' 17"	1° 14' 17"
2150	25.00	22.75'	25.09'	1° 21' 53"	2° 36' 10"
2125	"	"	"	"	3° 18' 03"
2100	"	"	"	"	4° 19' 56"
1775	"	"	"	"	6° 21' 27"
1450	25.00	24.74'	23.09'	1° 21' 53"	6° 23' 22"
1425	14.50	14.36'	13.40'	0° 35' 59"	6° 59' 56"
1400	3.00	3.74'	3.51'	0° 9' 24"	7° 9' 00"
1375	14.50	9.92'	9.23'	0° 24' 45"	7° 22' 45"
1400	4.85	4.80'	4.48'	0° 12' 51"	7° 05' 46"
PC	14.00	14.85'	10.780'	4° 41' 14"	12° 23' 00"

6.47586 min/ft.

CURVE DATA BASED ON H.P. R. 1001.75' Δ 25° 10'

Sta	Arc	Chord B'D Hwy Ch.	Chord B'D Prop. Ch.	Deflection	Tan Del's
PC	14.74	22.24'	22.75'	0° 34' 04"	0° 34' 04"
1530	28.00	28.00'	27.68'	0° 48' 05"	1° 02' 12"
1555	2.26	2.51'	2.63'	0° 4' 17"	1° 26' 59"

1.71587 min/ft.

Excavation  
 Prop.  
 205.7 CY.  
 20.6 +10%  
 226.3 CY. Total

1/2

LAURA AVE.  
 N.W. LARKIN DR. TO S.L. DENKER ST.  
 30' CONC. & CB.  
 CITY OF WICHITA, KANSAS  
 B.E. SMITH CITY ENGINEER  
 DATE OCT. 1965 PROJ. C15-59