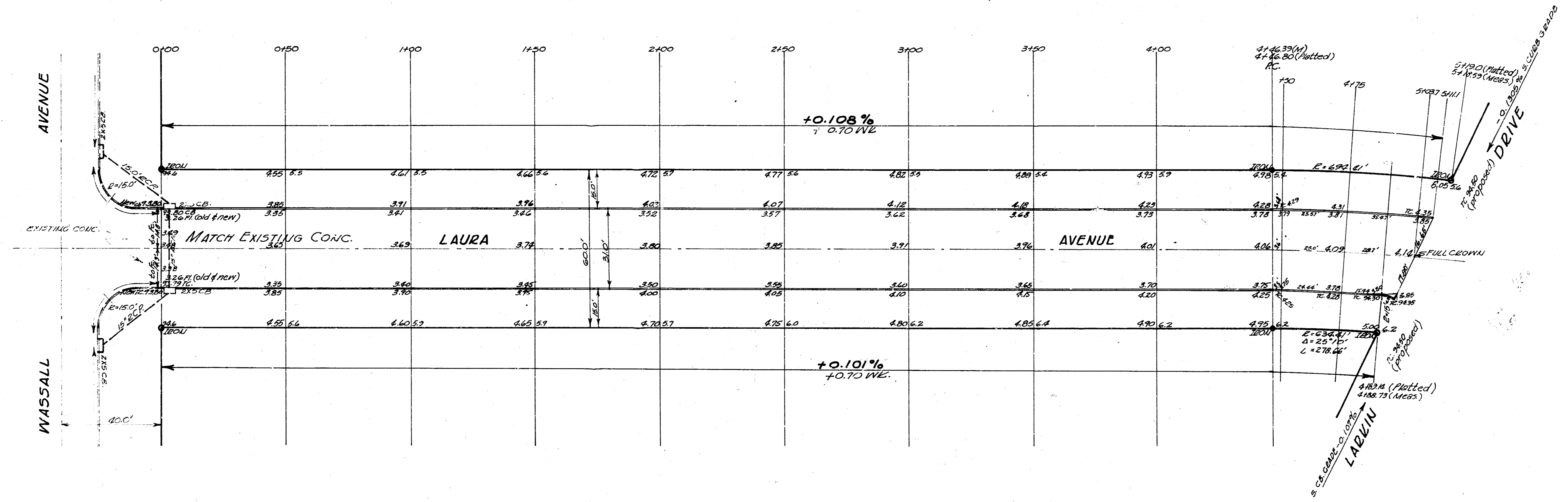
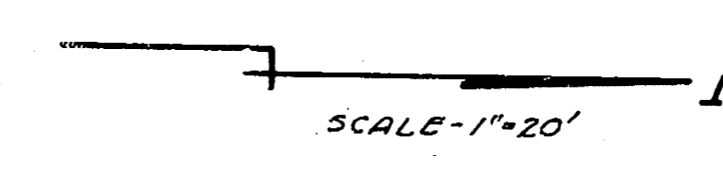


BM. "P" in PK. 5. west End Rad. Tcb. NW.
 Con. LAURA & Wassall Elev. 93.95

Stationing on & LAURA



ELEV. 93.95
 BM. "P" in PK. 5. west End Rad. Tcb. NW.
 Con. LAURA & Wassall Elev. 93.95

EXCAVATION TOTALS
 632.3
 10% 632
 Prop. 695.5 Cu. Yds.

STA.	PC	PT	DEL. L.	TOTAL DEL.
4+62.30	PC			
4+50	3.71	3.92	0'01'19"	0'09'13"
4+75	25.79	26.20	1'04'41"	1'14'00"
4+82.5	16.30	15.23	0'50'43"	1'36'43"
5+111	13.48	-	0'47'01"	2'41'44"



LAURA AVENUE
 NL WASSALL - SL LARKIN DR.
 30' Conc. & Cb.
 CITY OF WICHITA, KANSAS
 B.E. SMITH CITY ENGINEER
 MARCH 1956 Proj. No. C15223