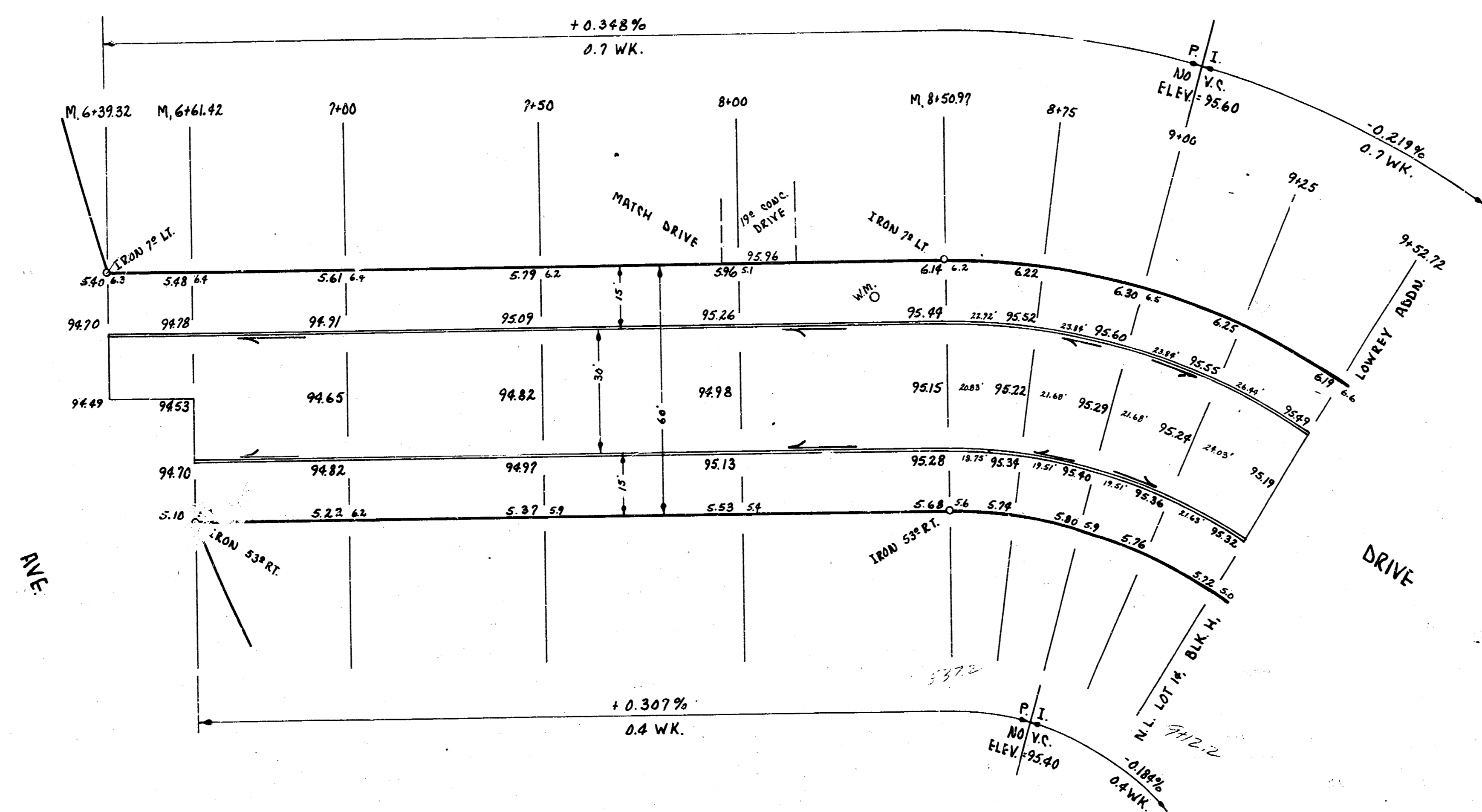


B.M. 98.74 N.W. COR. CONC. PORCH, HD # 2609 LARKIN.  
 B.M. 93.95 "P" 1/3 P.K.S., TOP CB., W. END RAD., N.W. COR. LAURA & WASSALL.  
 BASE LINE & STATIONING 7° S.W. OF N.E. PROPERTY LINE.



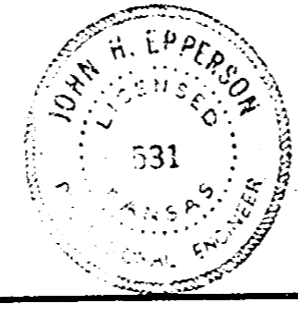
CURVE DATA STA 8+50.97 TO STA. 10+41.14  
 BASED ON A LINE 7° S.W. OF N.E. PROP. LINE

R = 173.00  
 L = 190.17  
 $\Delta = 62^{\circ} 59'$   
 $\frac{\Delta}{2} = 31^{\circ} 29' 30''$   
 MIN. DEFL./FT. = 9.935660

~ PROPERTY EARTHWORK TOTALS ~

213.8 CU. YDS. CUT +10% = 235.2 CU. YDS. CUT  
 9.8 CU. YDS. FILL +10% = 10.8 CU. YDS. FILL

STATION	DEFL. $\Delta$	TOTAL DEFL. $\Delta$	CHORD 8° OFF N.E. CB.	CHORD 8° OFF E.W. CB.	ARC 7° OFF N.E. PL.
P.C. 8+50.97					
8+75	3° 58' 45"	3° 58' 45"	2.9 01	17.43	24.03
9+00	4° 08' 24"	8° 07' 09"	2.9 98	18.34	25.00
9+25	4° 08' 24"	12° 15' 33"	2.9 98	18.34	25.00
9+52.72	4° 35' 25"	16° 50' 58"	2.7 69	20.33	27.72



1/2

**LARKIN DRIVE**  
 E.L. LAURA ~ N.L. LOT 14,  
 BLK. H. LOWREY ADDITION  
 30° CONC. & CB.  
**CITY OF WICHITA, KANSAS**  
 B.E. SMITH CITY ENGINEER  
 DATE: MAY, 1959 PROJ. NO. C19-48