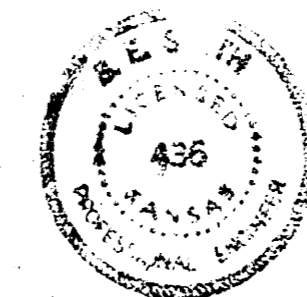
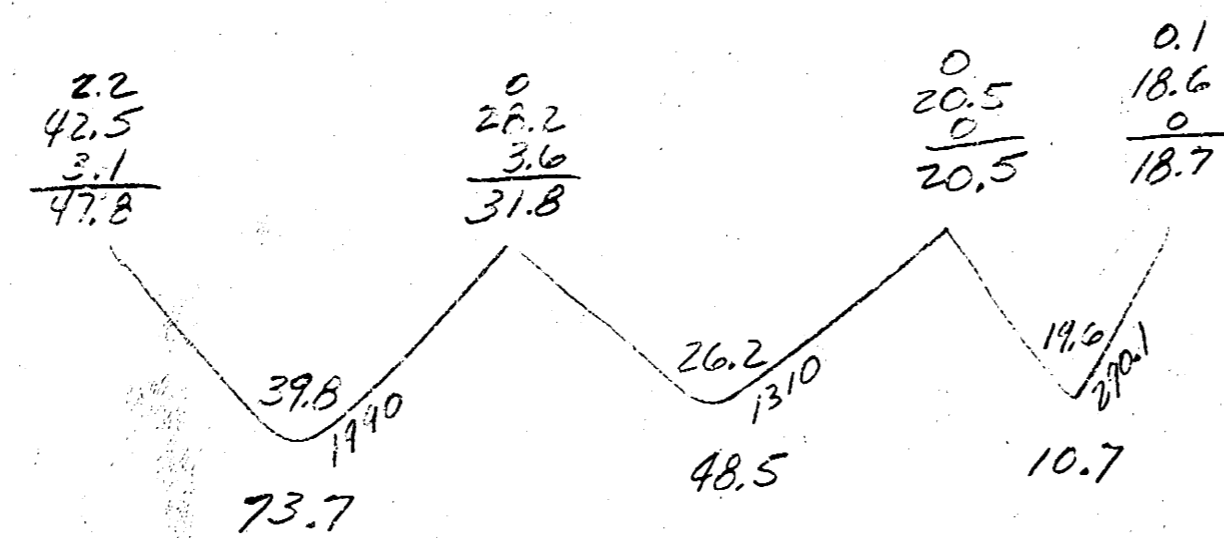
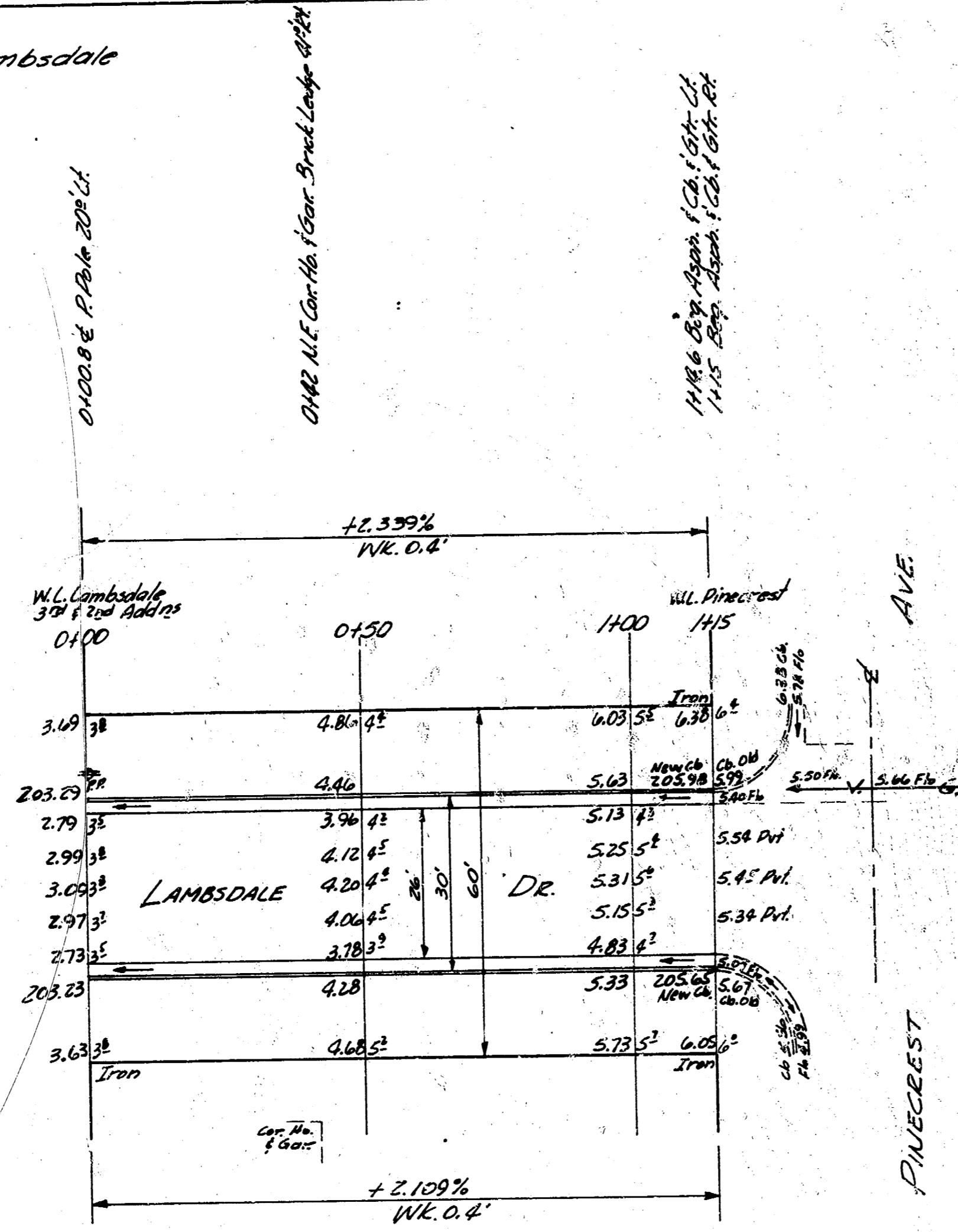
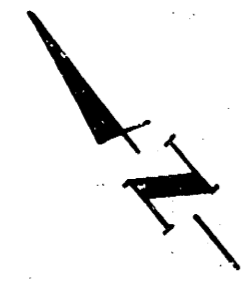


B.M. 218.21 S.W. Cor. Stop Ho. # 5402 Lambdale
 B.M. 20566 "E" in Ritchie W.C. Pinecrest S. Co. Lambdale

Chaining E. on E

Excav.
 Prop 132.9 City 0
 +107.0 133
 Total 146.2 cu. yd

Surveyed
 Exc. O.E.C.
 Checked J.F.



LAMBSDALE DR.
 W.L. PINECREST TO W.L. 3rd ADD.
 & 2nd ADD. TO LAMBSDALE
 26-2-50 A.C.
 CITY OF WICHITA, KANSAS
 B.E. SMITH CITY ENGINEER
 MAY 1954 PROJ. NO. C14-14