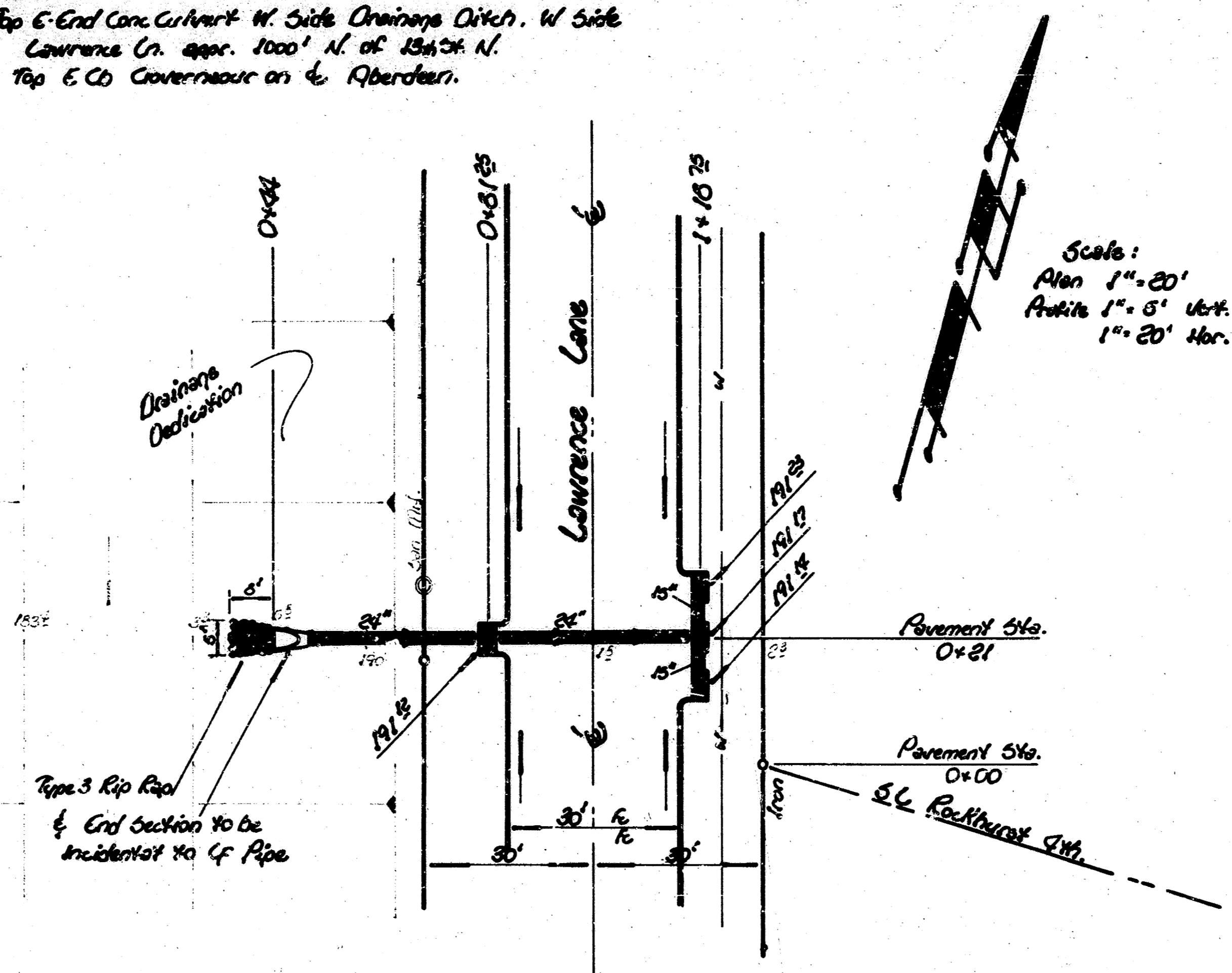
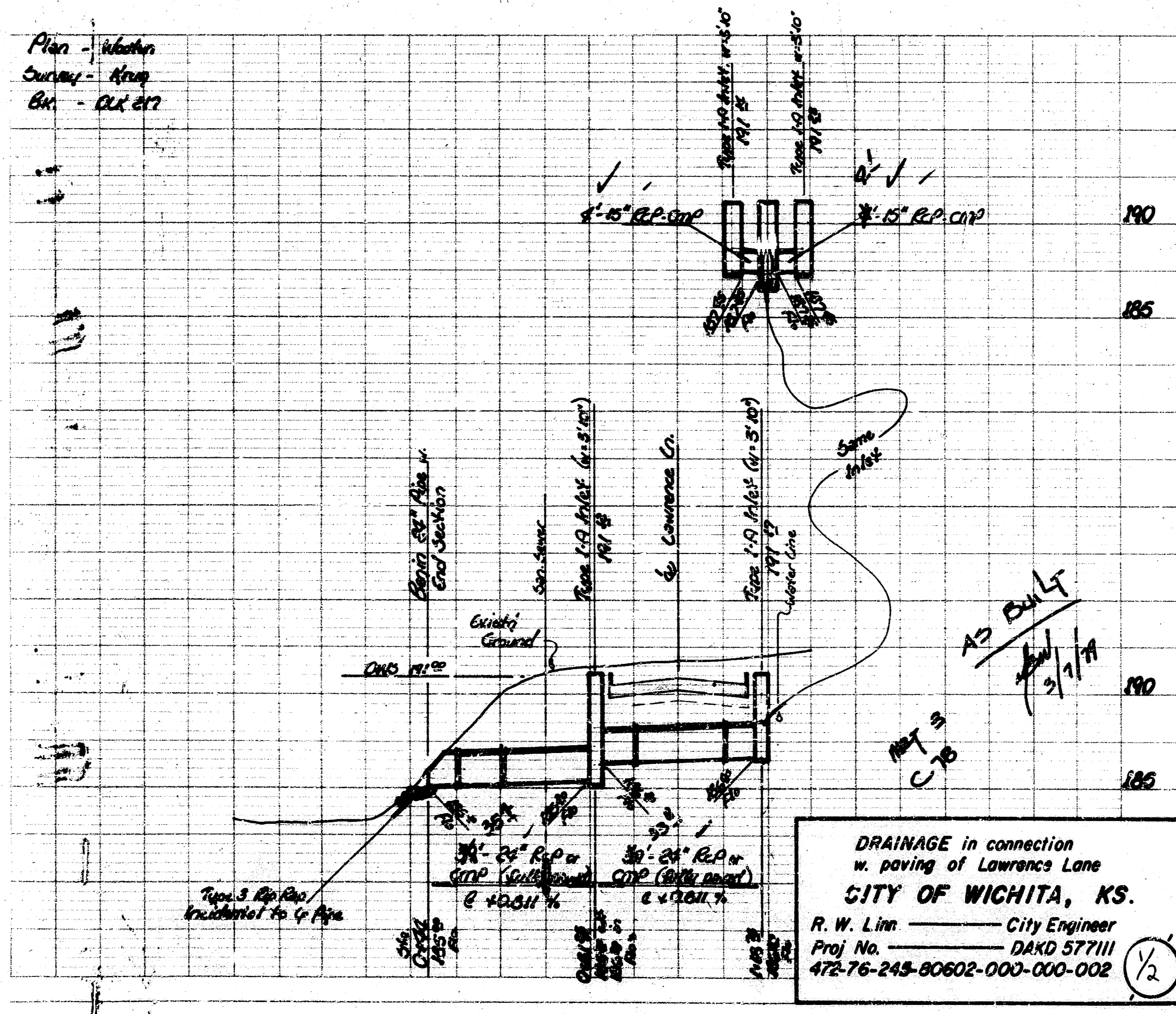


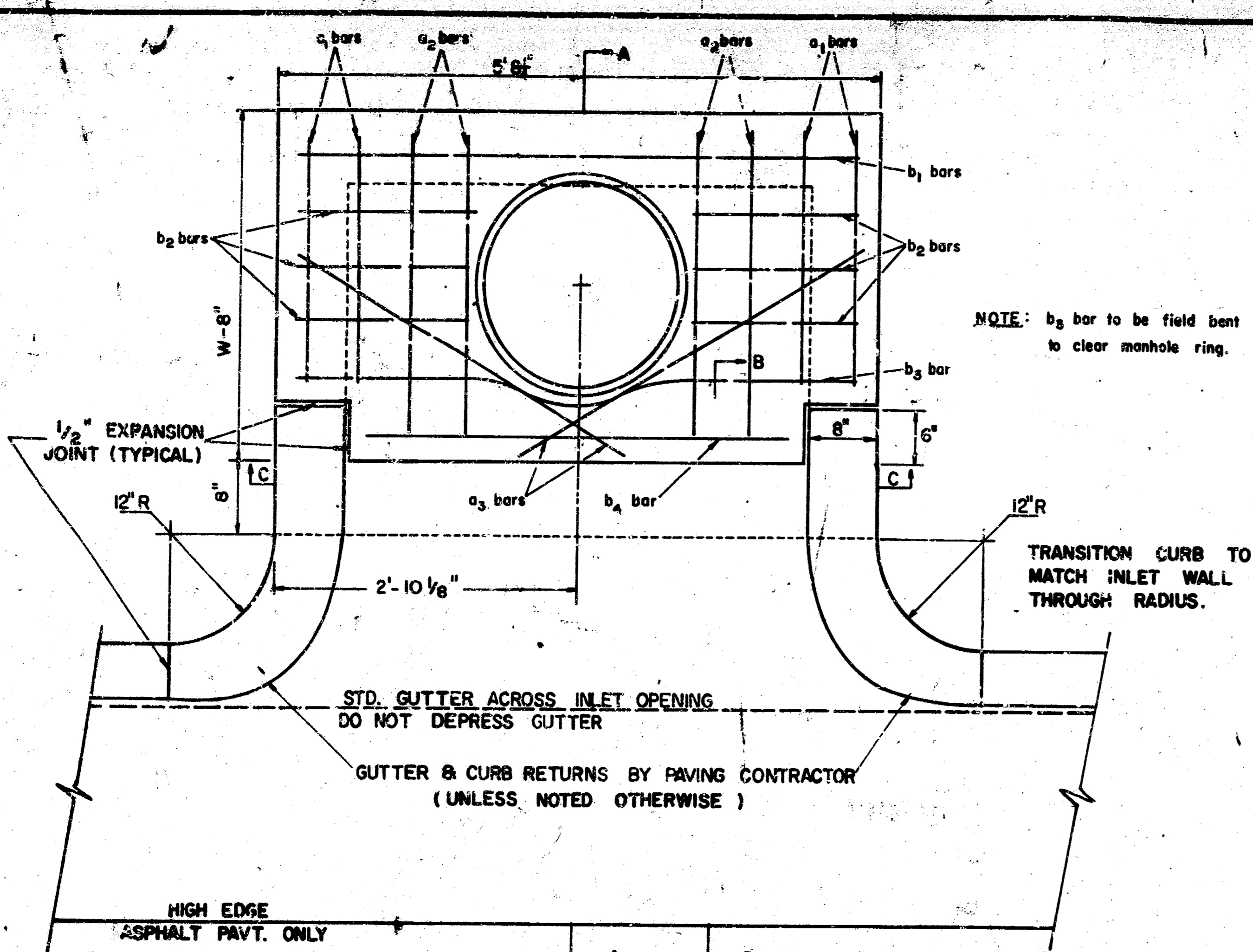
BM 185 = Top E-End Conc. Culvert W. Side Drainage Ditch. W. Side
 Lawrence Cr. approx. 1000' N. of 134th St. N.
 BM 204 = Top E-End Concrete on W. Aberdeen.



Note -
 Type 1-A Inlets (4'-3" x 10") to be constructed.
 Storm Sewer Contractor to co-ordinate construction w.
 pavement contractor.
 Rip Rap & End Section shall be considered as incidental
 to C.F. pipe.

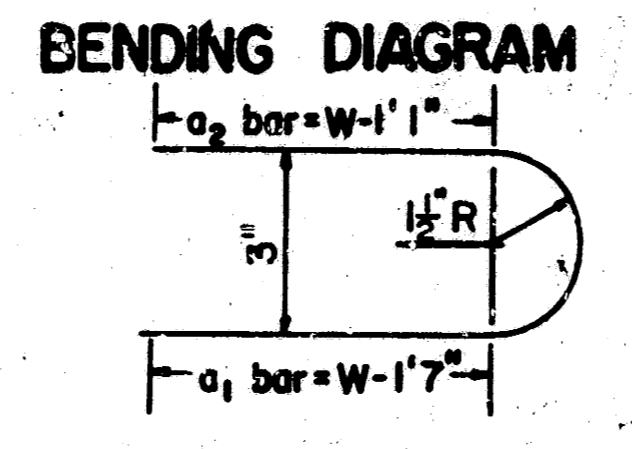
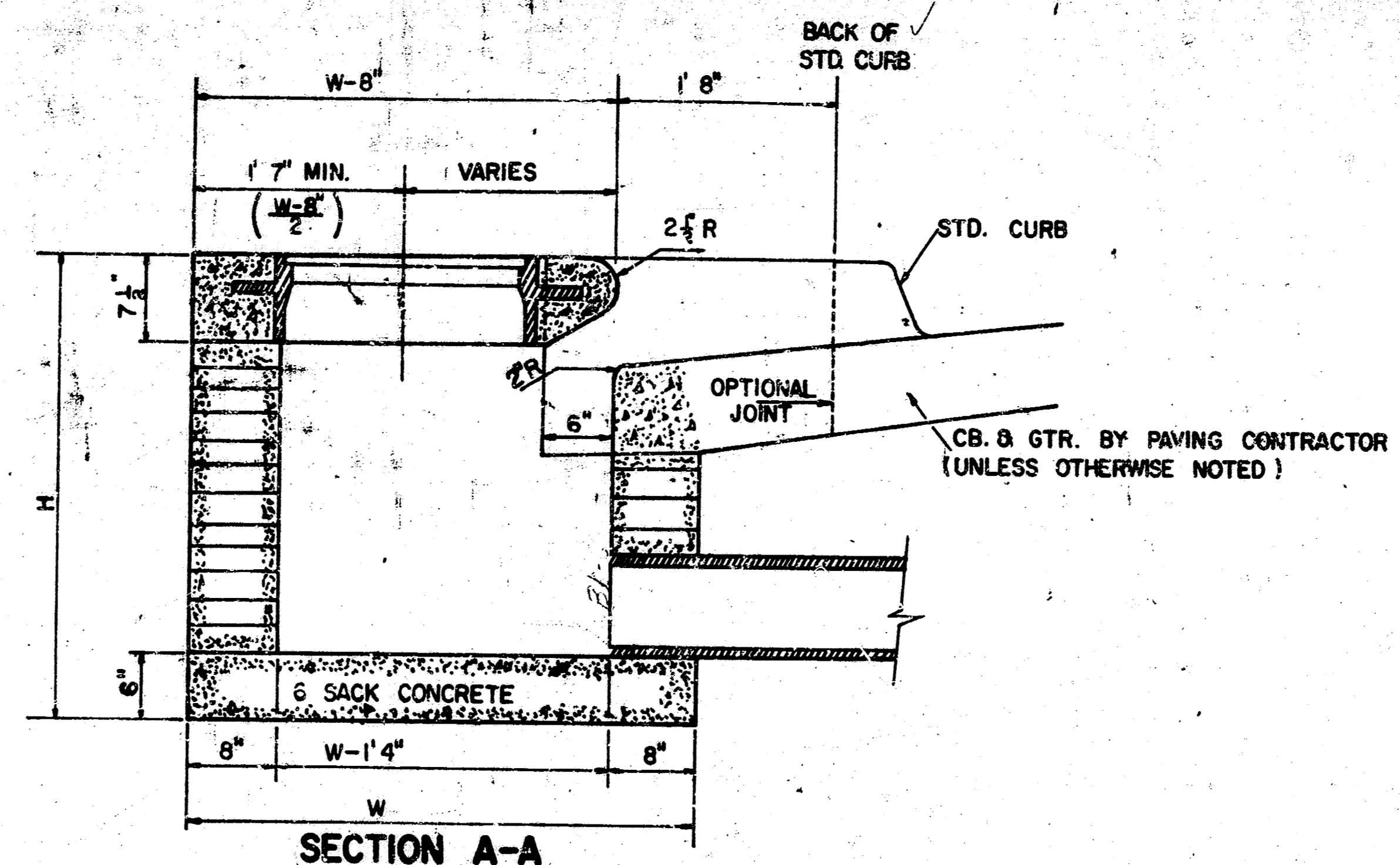
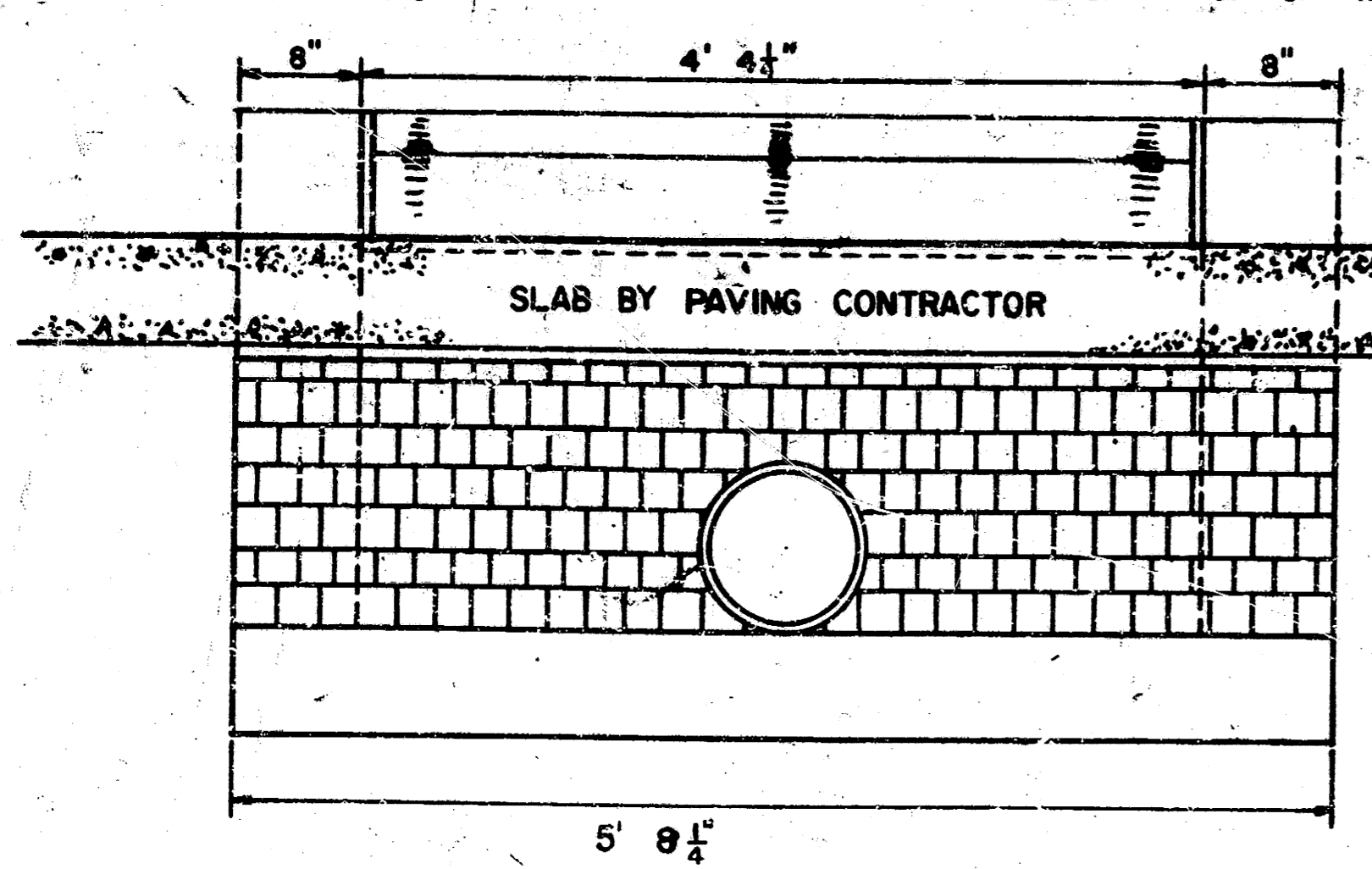
TYPE 3 RIP-RAP SHALL BE 12" RIP-RAP ON 6" SAND AND GRAVEL
 BEDDING. THE ROCK FOR RIP-RAP AND GRAVEL SHALL BE HARD,
 DENSE, DURABLE, AND SHOULD BE REASONABLY WELL GRADED. THE
 SIZE RANGE OF ROCK USED FOR 12 INCH RIP-RAP SHALL HAVE A
 MAXIMUM SIZE OF 1 CUBIC FT. AND A MINIMUM SIZE OF 1 1/2
 INCHES. THE 6" SAND AND GRAVEL BEDDING FOR RIP-RAP SHOULD
 BE A CONTINUOUS LAYER OF SAND OR GRAVEL AND CRUSHED ROCK,
 REASONABLY WELL GRADED TO A MAXIMUM OF 1 1/2 INCHES IN SIZE.



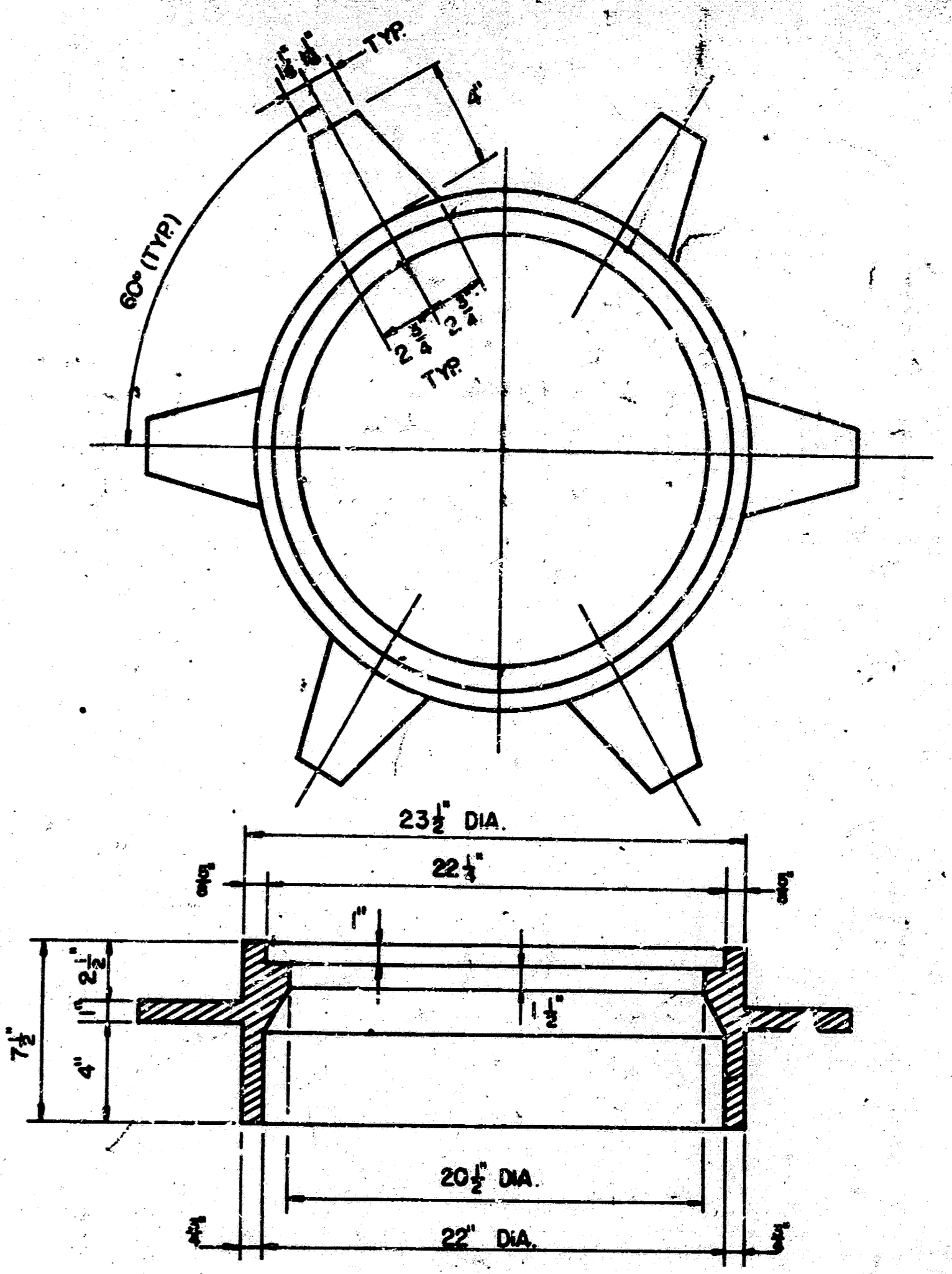


STEEL SCHEDULE

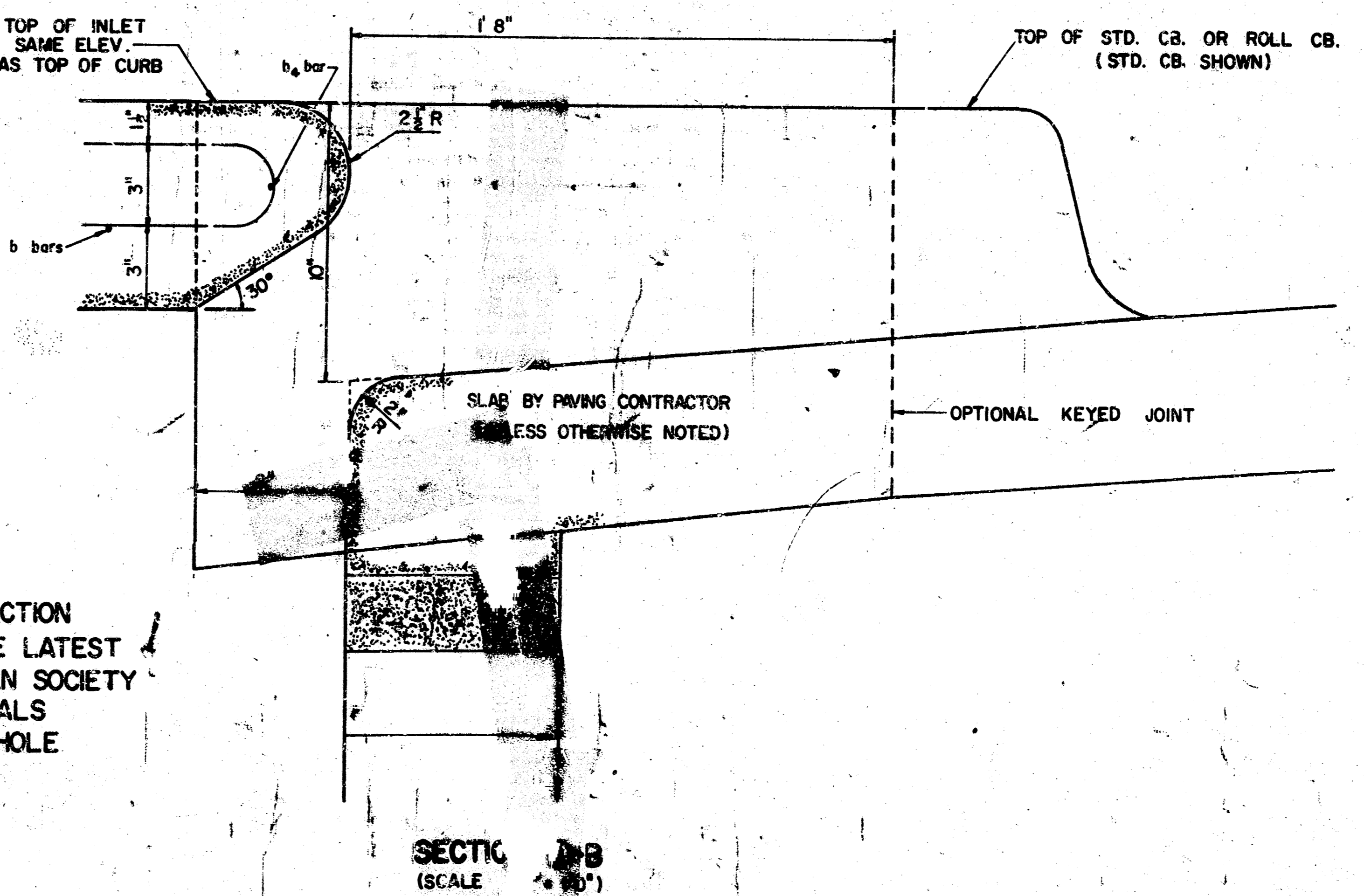
BAR NUMBER	a_1	a_2	a_3	b_1				b_2	b_3	b_4	Wt. Lbs.
1	4	4	2	1	3	5	7	6	1	1	
SIZE	#4	#4	#4	#4	#4	#4	#4	#4	#4	#6	
LENGTH	4'9"	5'9"	3'7"	5'5"	—	—	—	1'7"	5'6"	4'0"	53
	6'9"	7'9"	4'7"	—	5'5"	—	—	1'7"	5'6"	4'0"	72
	8'9"	5'9"	5'7"	—	—	5'5"	—	1'7"	5'6"	4'0"	91
	10'9"	11'9"	6'7"	—	—	—	5'5"	1'7"	5'6"	4'0"	110



NOTE: CONCRETE TOPS TO BE INSTALLED ON THIN MORTAR CUSHION TO INSURE FULL SUPPORT ALONG BRICK WALLS. CONCRETE TOPS MAY BE CAST IN PLACE OR PRECAST CONCRETE FOR INLET TOPS AND FLOORS SHALL BE 6-SACK PAVING MIX.



THIS TYPE INLET TO BE USED WHEN PAVEMENT IS ASPHALT PAVEMENT WITH ASPHALT BASE COURSE AND/OR WHEN PAVEMENTS HAVE ROLL CURB



DETAIL
STANDARD TYPE 1A CURB INLET
 (SET BACK LOCATION)
 CITY OF WICHITA, KANSAS
 R.W. LINN—CITY ENGINEER
 FEBRUARY 1975