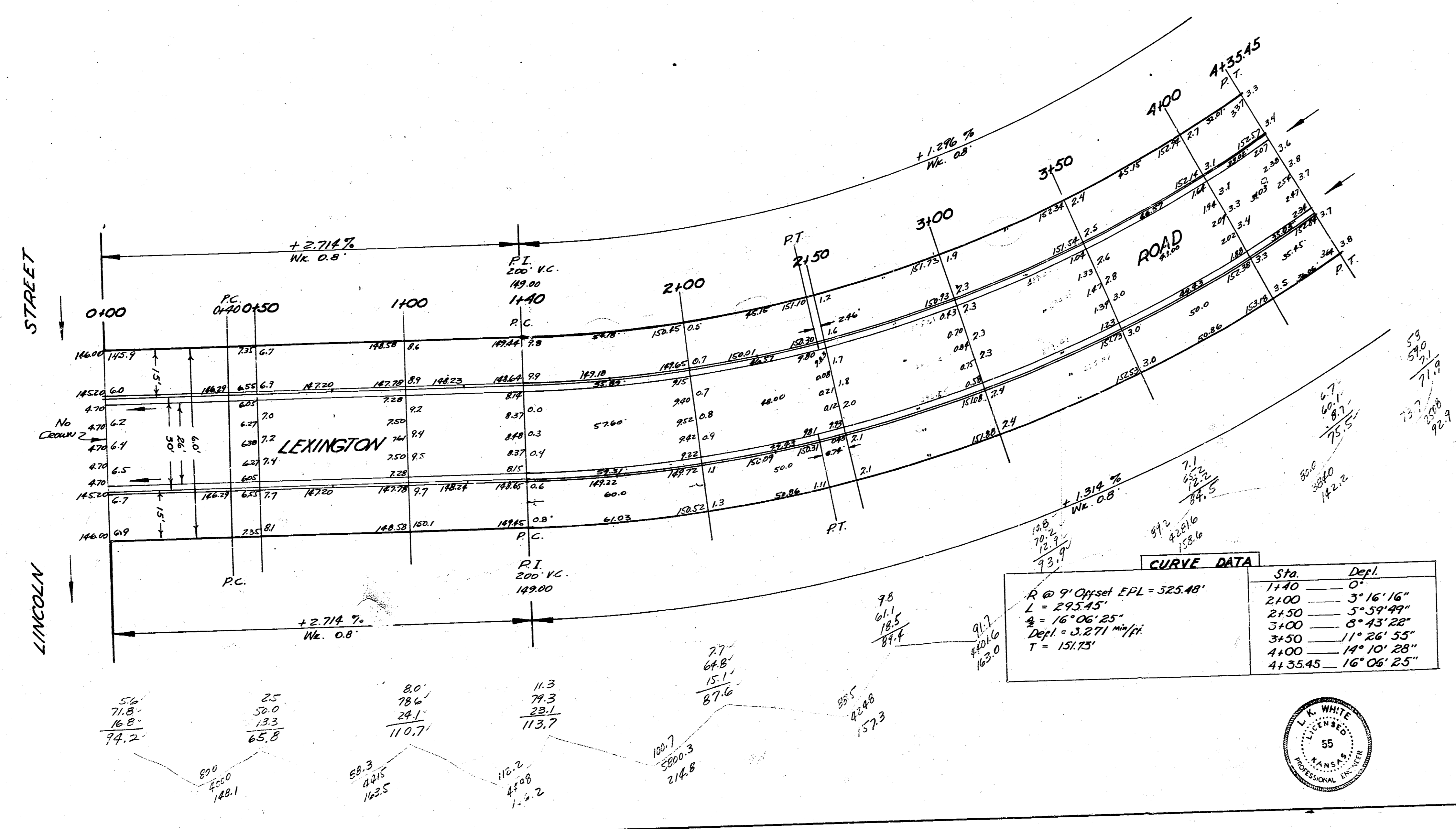


<b>GRAND TOTAL</b>		<b>Elev.</b>	<b>CITY</b>
<b>PROP</b>	<b>EXIST</b>	<b>PROP</b>	<b>0</b>
1547.3	1273 21.405.	183.1	
1833.0		166.5	
<u>3380.3 21.405.</u>		214.8	
		117.3	
		103.0	
		138.4	
		142.2	
		72.7	
		<u>1206.6</u>	
		+10.74	
		<u>1547.3 21.405.</u>	

NOTE: SET STAKES WITH THIS ELEVATION ONLY!  
 BM 16726 "M" in Mueller F.Hyd. NW Cor. Orme & Lightner



Sta	Depl.
1+40	0"
2+00	3' 16' 16"
2+30	5' 59' 49"
3+00	8' 43' 28"
3+50	11' 26' 55"
4+00	14' 10' 28"
4+35.45	16' 06' 25"

**LEXINGTON ROAD**  
 NL LINCOLN - SL GILBERT  
 26-2-30 AC  
 City of Wichita Kans.  
 LK White City Engr.  
 April, 1951 Proj. No. C11-41



Elev

Prop.	City
141.8	68.0
88.3	47.7
72.6	115.7
84.9	40.7
199.4	127.3
207.0	
214.1	
250.2	
207.4	
158.7	
1606.4	
-10.4	
1835.0	44.405

