

LIFESTYLE MOBILE HOME PARK PAVING AND STORM SEWER PLANS

ENVIRONMENTAL ENTERPRISES INC.
WICHITA, KANSAS

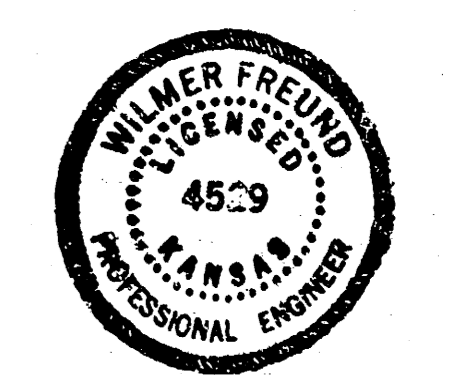
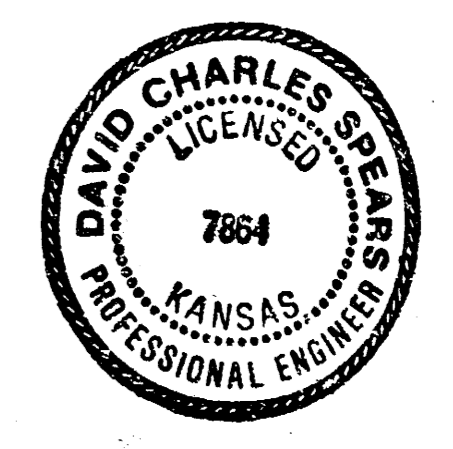
DELAMATER, FREUND & ASSOCIATES, P.A.
ENGINEERS & ARCHITECTS, WICHITA, KANSAS
FEBRUARY, 1979

- INDEX OF SHEETS**
1. Title Sheet
 2. Street Alignment
 3. Emergency Vehicle Crossing and Paving Details
 4. Plan - Profile of Storm Sewers and Outfalls
 5. Type 22 Curb Inlet
 6. Typical and Special Space Layouts
 7. Utilities Layout

NOTE TO CONTRACTOR
This project will be constructed under the supervision of the CITY ENGINEER and conforming to the SPECIFICATIONS of the CITY OF WICHITA. THE CONTRACTOR will reimburse the City of Wichita for all cost of Engineering, Plans, and Inspection.

CITY OF WICHITA
Approved as Noted
By CITY ENGINEER OF WICHITA
William Freund
Professional Engineer
Date: 2/20/79

APPROVED AS NOTED
By CITY ENGINEER OF WICHITA
William Freund
Professional Engineer
Date: 2/20/79



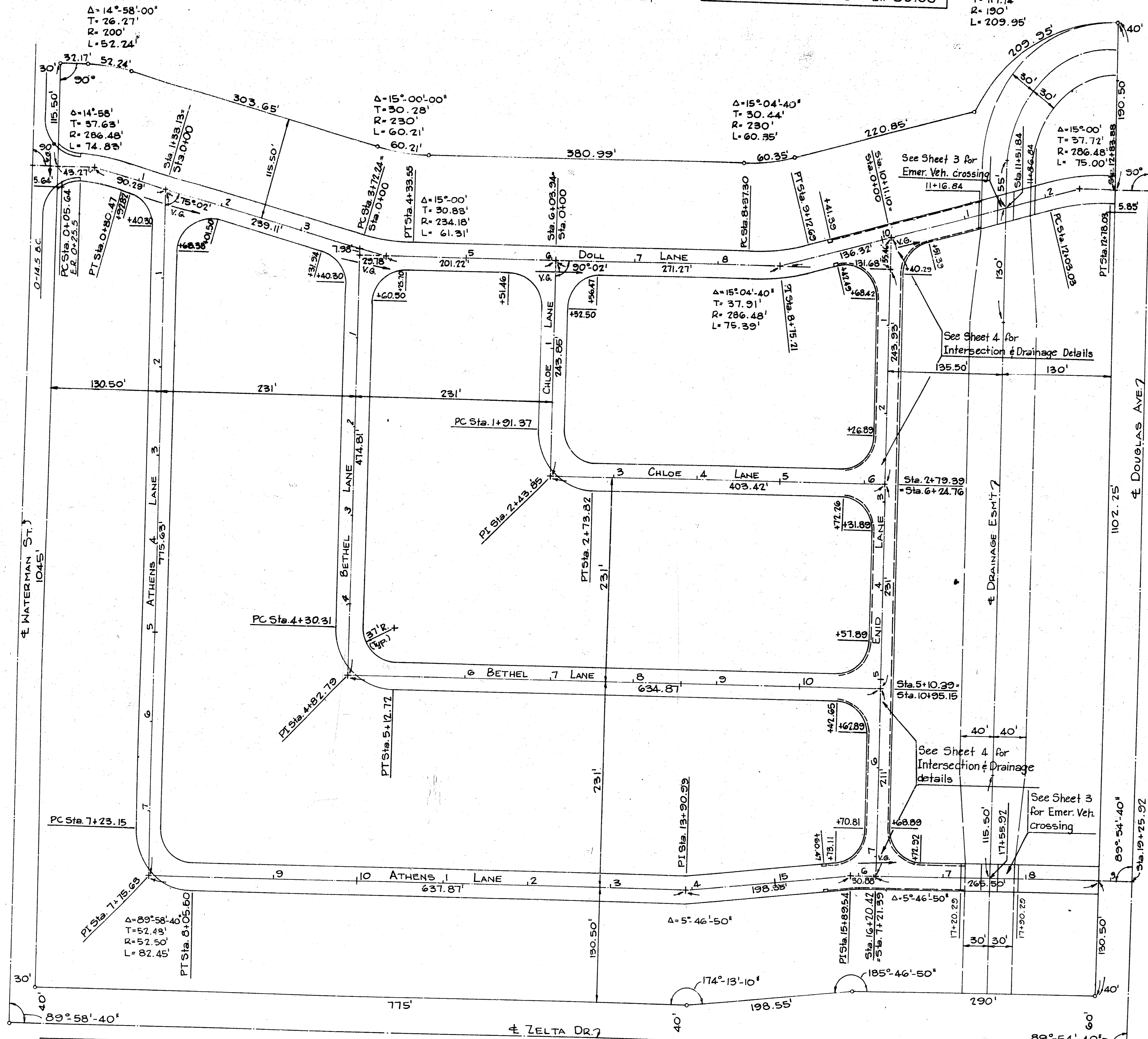
NE Cor., SW 1/4
Sec. 22, T27S, R2E

AVAILABLE COPY... FILMED FROM THE BEST

B.M.#4-Ch. "1" in end of curb return on North side of Waterman St. on West Property Line El. 89.65

B.M.#3-R.R. Spk. in L.P. 500' North of Waterman St. on West R. El. 85.56

B.M.#2-R.R. Spk. in L.P. 500' South of Douglas Ave. on West R. El. 80.53



B.M.#6-R.R. Spk. in L.P. S.W. of the intersection of Waterman St. & Zelta Dr. El. 84.10

B.M.#1-City of Wichita B.M. disc. 32' W. & 38' N. of & intersection of Zelta Dr. & Douglas Ave. El. 63.89

NE Cor. SW 4 Sec. 22, T27S, R2E

ATHENS LANE	
STA.	ELEV.
0+00	88.46
0+40.30	87.90
0+63.38	87.57
1+00	87.06
2+00	85.66
3+00	84.26
4+00	82.86
5+00	81.46
6+00	80.06
7+00	78.66
7+23.13	78.34
8+00	77.26
8+05.58	77.18
9+00	75.86
9+50 PVI	75.26
10+00	74.86
11+00	74.26
12+00	73.66
13+00	73.06
13+00.57	72.52
14+00	72.46
15+00	71.86
15+73	71.42
15+89.52	71.32
16+00	71.26
16+72.29	70.83
16+90	70.72
17+01.20PVC	70.65
17+11.29PVI	70.05
17+20.29	68.80
17+21.29PVT	68.60
17+45.29	63.80
17+65.29	63.80
17+90.29	68.80
17+93.79PVC	69.50
18+03.79PVI	71.02
18+13.79PVT	71.60
18+85.29	72.30

BETHEL LANE	
STA.	ELEV.
0+00	86.28
+20.67	85.97
0+40.30	86.11
0+52.50	86.20
1+00	86.54
2+00	85.20
3+00	83.86
4+00	82.52
+30.31	82.11
5+00	81.18
+12.72	81.01
6+00	79.84
7+00	78.50
8+00	77.16
9+00	75.82
10+00	74.48
+42.65	73.91
+92.15	73.20

DOLL LANE	
STA.	ELEV.
0+00	89.75
0+80.47	89.85
0+92.82	89.86
1+00	89.45
1+33.13	88.46
2+00	87.85
2+01.50	87.84
3+00	86.94
3+31.94	86.65
3+72.24	86.28
4+00	86.03
4+33.55	85.72
5+00	85.12
5+51.46	84.65
6+00	84.21
6+03.94	84.17
6+56.47	83.70
7+00	83.30
8+00	82.39
8+37.30	82.05
9+00	81.48
9+12.69	81.36
9+42.49	81.09
10+00	80.57
10+11.10	80.47
10+51.27	80.10
10+98.50PVC	79.66
+73.82	81.80
11+08.50PVI	79.06
11+16.84	77.90
11+18.50PVT	77.57
11+41.84	72.90
11+61.84	72.90
11+86.84	77.90
11+90.85PVC	78.70
12+00.85PVI	80.14
12+10.85PVT	80.84
12+78.07	81.85
12+83.88	81.94

CHLOE LANE	
STA.	ELEV.
0+00	84.18
0+20	83.87
+52.50	84.11
1+00	84.46
+91.37	83.06
2+00	82.93
+73.82	81.80
3+00	81.40
4+00	79.87
5+00	78.34
+72.26	77.23
6+00	76.81
+24.76	76.43

ENID LANE	
STA.	REFERENCE ELEV.
0+00	74.76
0+20.70 V.G.	80.16
0+40.17 RET. LT.	80.30
0+68.61 RET. RT.	80.50
0+95.70 PVC	80.69
1+00	80.72
1+20.70 PVI	80.65
1+45.70 PVT	80.16
2+00	78.61
2+29.89 RET.	77.76
2+69.39 PVC	76.63
2+79.39 PVI	76.43
2+86.40 SUMP	76.39
2+89.39 PVT	76.40
3+00	76.45
3+31.89 RET.	76.61
3+54.39 PVC	76.72
3+79.39 PVI	76.64
4+00	76.25
4+04.39 PVT	76.13
4+57.89 RET.	74.61
5+00.39 PVC	73.40
5+10.39 PVI	73.20
5+17.40 SUMP	73.16
5+20.39 PVT	73.16
5+62.89 RET.	73.38
+85.39 PVC	73.49
6+00	73.49
6+10.39 PVI	73.40
6+35.39 PVT	72.90
6+68.89 RET. LT.	71.95
6+70+81 RET. RT.	71.89
7+01.39 V.G.	71.02

NOTE:
This project shall be constructed in accordance with the latest specifications of the City of Wichita.
At the entrance of Doll Lane off of Waterman Street, the radius at the back of curb is 40 feet; curbs shall be vertical to end of return; and the approach shall be concrete to the property line.

NOTE TO CONTRACTOR:
This project will be constructed under the supervision of the CITY ENGINEER and conforming to the SPECIFICATIONS of the CITY OF WICHITA. The CONTRACTOR will reimburse the City of Wichita for all cost of Engineering, Plans, and Inspection.

APPROVED AND NOTED
By City Engineer or Engineer
City Engineer
District Engineer
Division Approaches

Denotes Vert. C#6

ENVIRONMENTAL ENTERPRISES INC.
CECIL MASTERS, PRES.; PAUL TREADWELL, SEC.-TREAS.
LIFESTYLE MOBILE HOME PARK
STREET ALIGNMENT
DELAMATER, FREUND & ASSOCIATES, P.A.
ENGINEERS & ARCHITECTS
WICHITA, KANSAS
SCALE DATE
Dwg. No. 249-D-201

AVAILABLE FROM THE BEST FILMED COPY

2 INLETS AT ATHENS LANE
REINFORCING BAR LIST L=10.0' W=4.5' H=4.25'

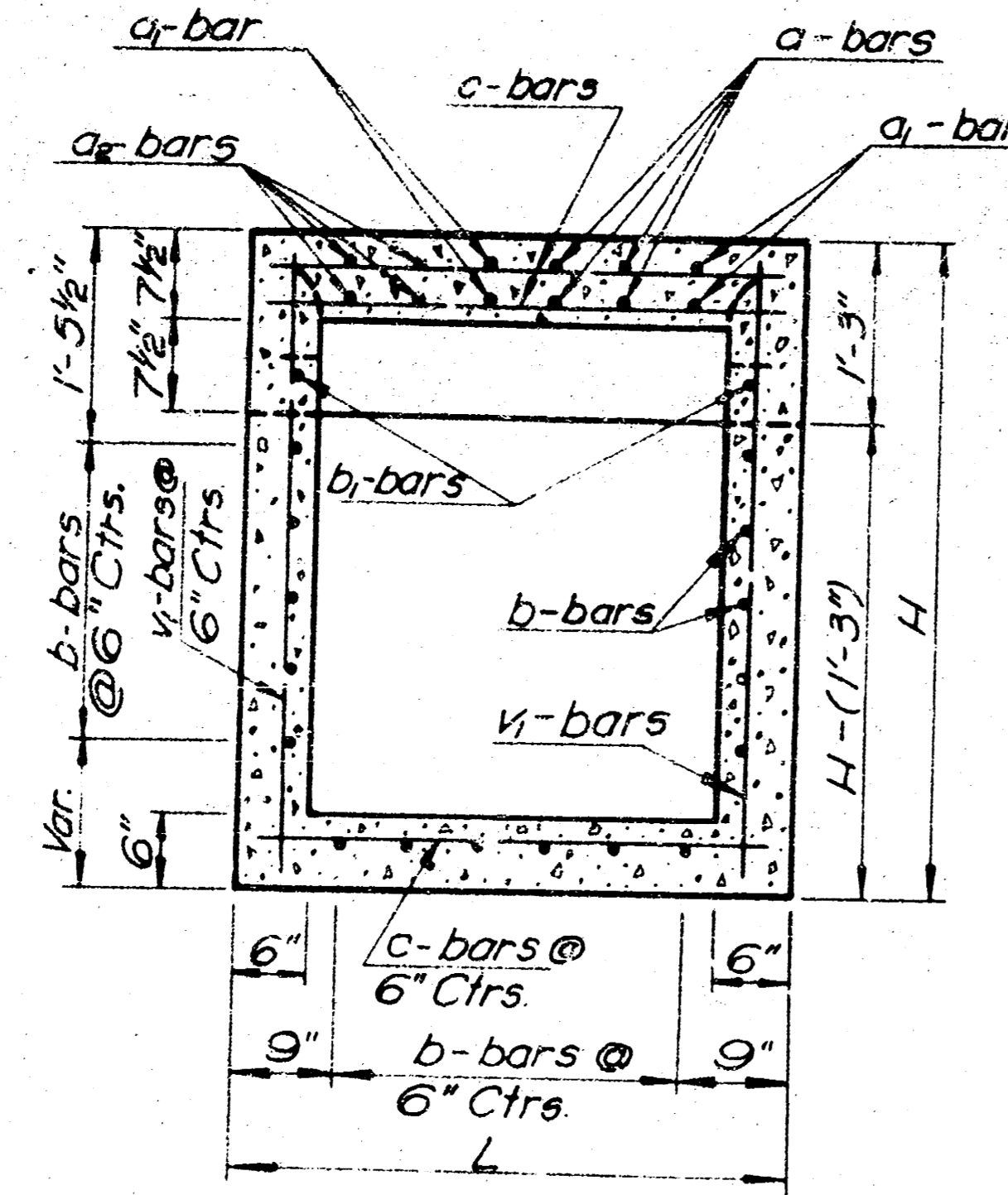
Bar No.	Size	No. of Bars	Length
A	#4	2	2'-6"
A-1	#4	2	3'-0"
A-2	#4	14	9'-1"
B	#4	28	4'-3"
B-1	#4	2	3'-9"
C	#4	26	9'-9"
C-1	#4	4	7'-6"
C-2	#4	4	7'-3"
V	#4	18	2'-9"
V-1	#4	32	4'-0"
X	#4	2	5'-0"

Cast Iron = 117 lbs. Rebar = 510 lbs.
Concrete = 3.1 C. Y. Exc. = 12.3 C. Y.

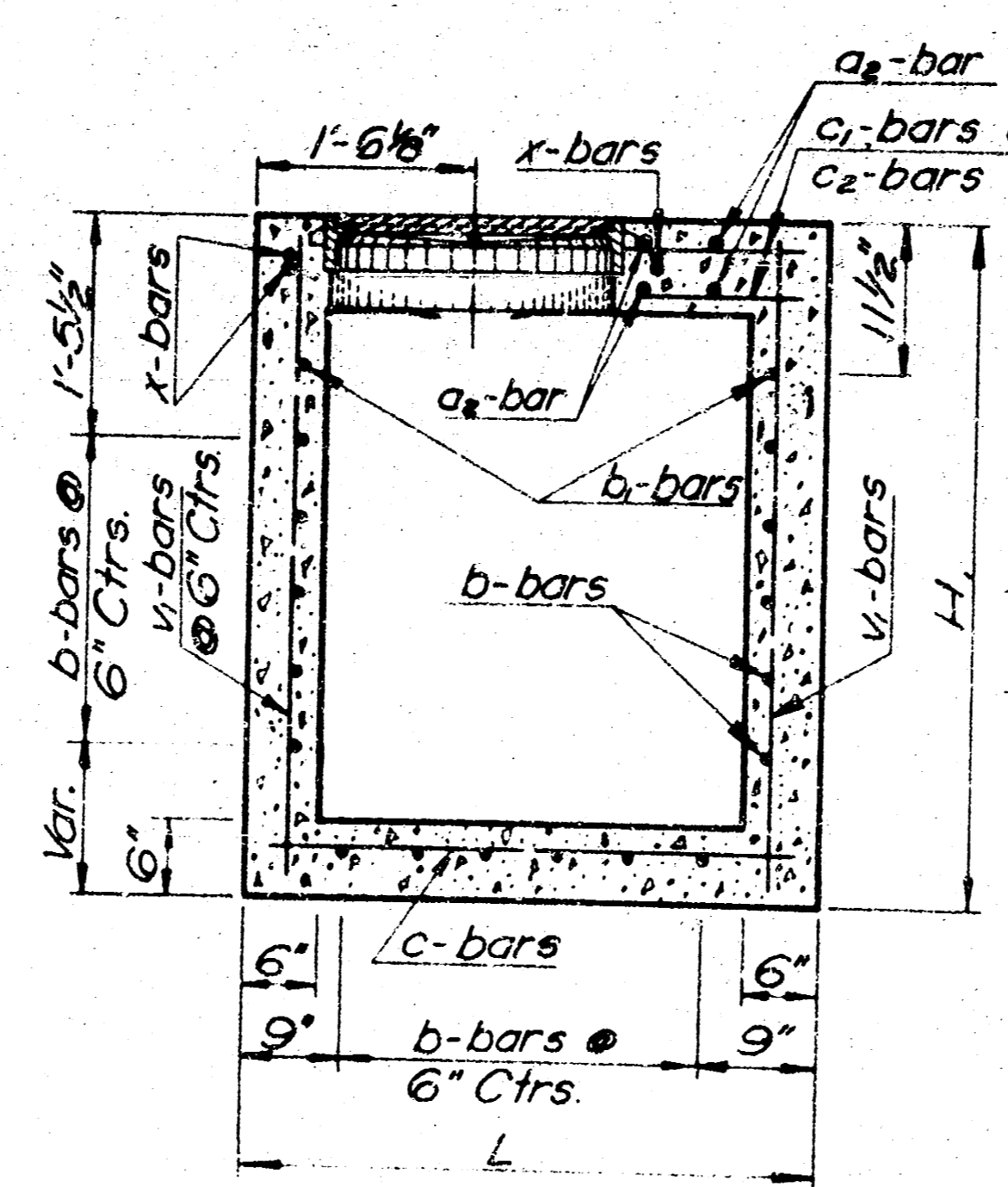
1 INLET AT BETHEL LANE
REINFORCING BAR LIST L=15.0' W=4.5' H=4.5'

Bar No.	Size	No. of Bars	Length
A	#4	2	2'-6"
A-1	#4	2	3'-0"
A-2	#4	24	9'-1"
B	#4	38	4'-3"
B-1	#4	2	3'-9"
C	#4	26	14'-9"
C-1	#4	4	12'-6"
C-2	#4	4	12'-9"
V	#4	28	3'-0"
V-1	#4	42	4'-3"
X	#4	2	5'-0"

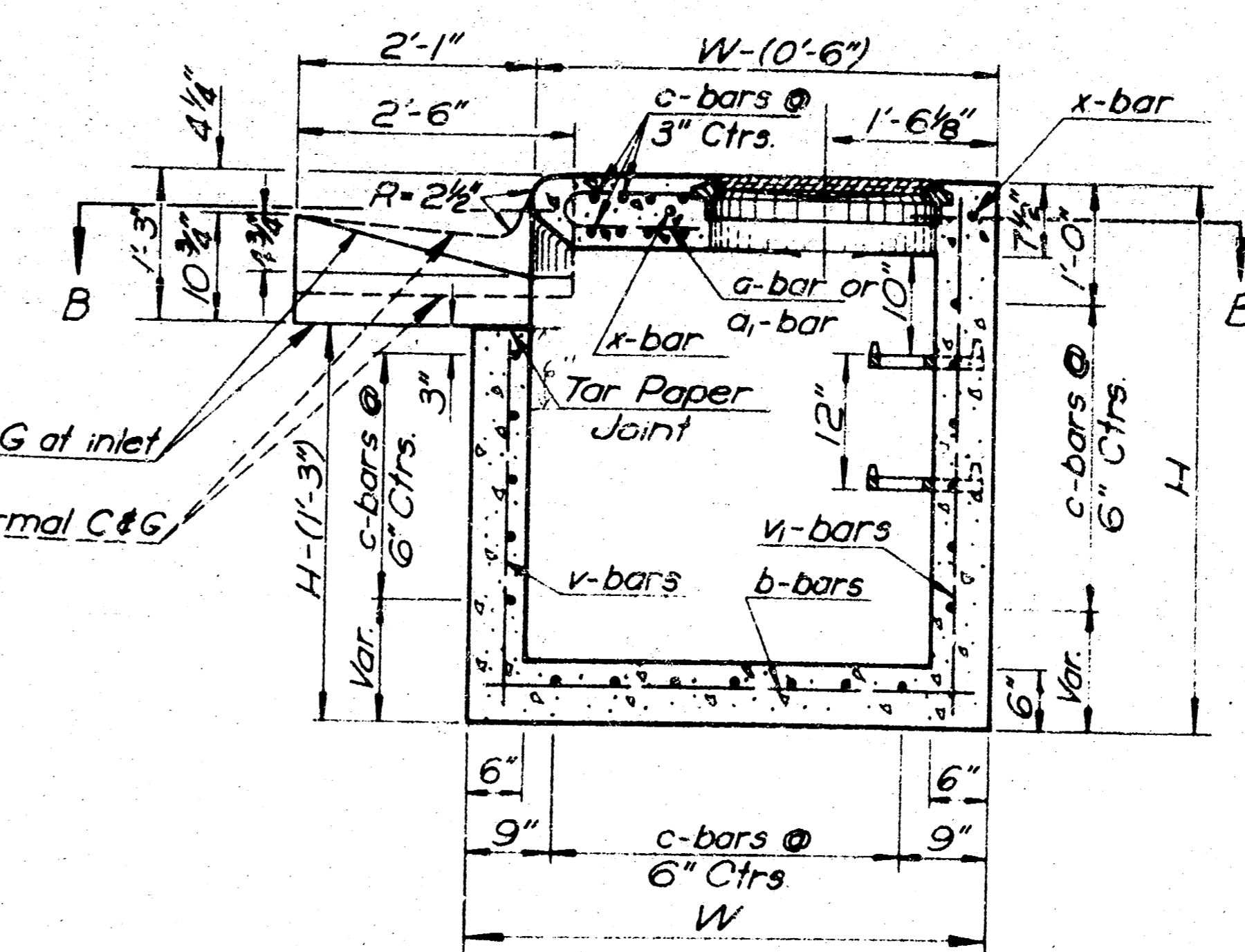
Cast Iron = 117 lbs. Rebar = 771 lbs.
Concrete = 4.7 C. Y. Exc. = 18.5 C. Y.



SECTION D-D



SECTION C-C



SECTION A-A

Note:
Use Class A Concrete throughout.
All exposed edges shall be finished with an edging tool.
Reinforcing bars shall be bent around pipe.
No deductions in concrete quantities shall be made for pipe openings.
At the contractor's option Class A Concrete (AE) or mix used in this PWT may be used throughout.

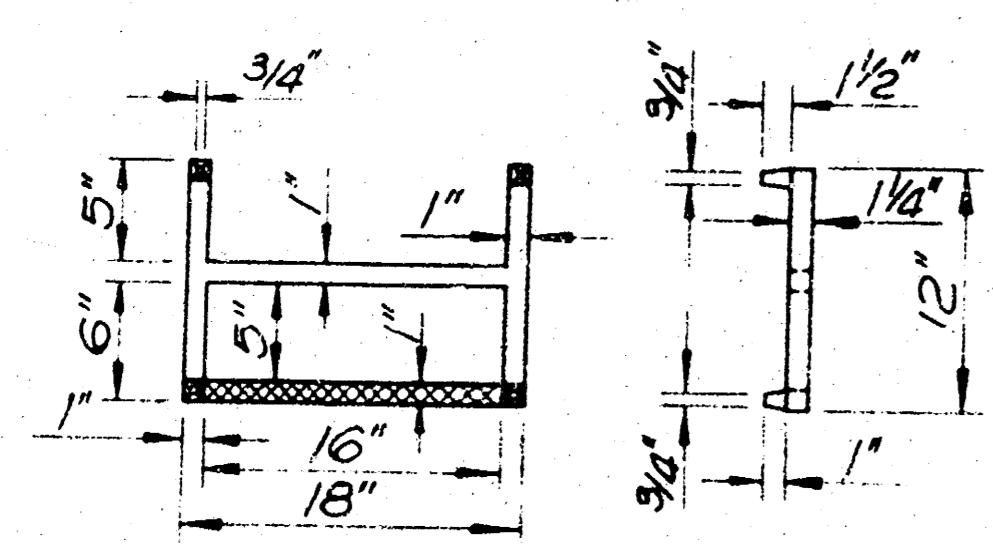
When so ordered by the Engineer, the top of the inlet shall be sloped slightly to approximately fit the ground line or other conditions.
All exposed cast iron surfaces shall be painted either in the shop or in the field with one coat of a zinc dust paint, followed by two field coats of aluminum paint.

Floor of inlet shall be shaped as directed by the Engineer. Concrete used for shaping shall be unreinforced Class A Concrete. No addition in concrete quantities shall be made for shaping floor of inlets.

All bars are #4 bars @ 6" spacing and shall have a minimum clearance of 1 1/2" unless otherwise noted on the plans.

Cast iron steps shall be installed in all storm sewer inlets with an H-dimension greater than 6 feet.

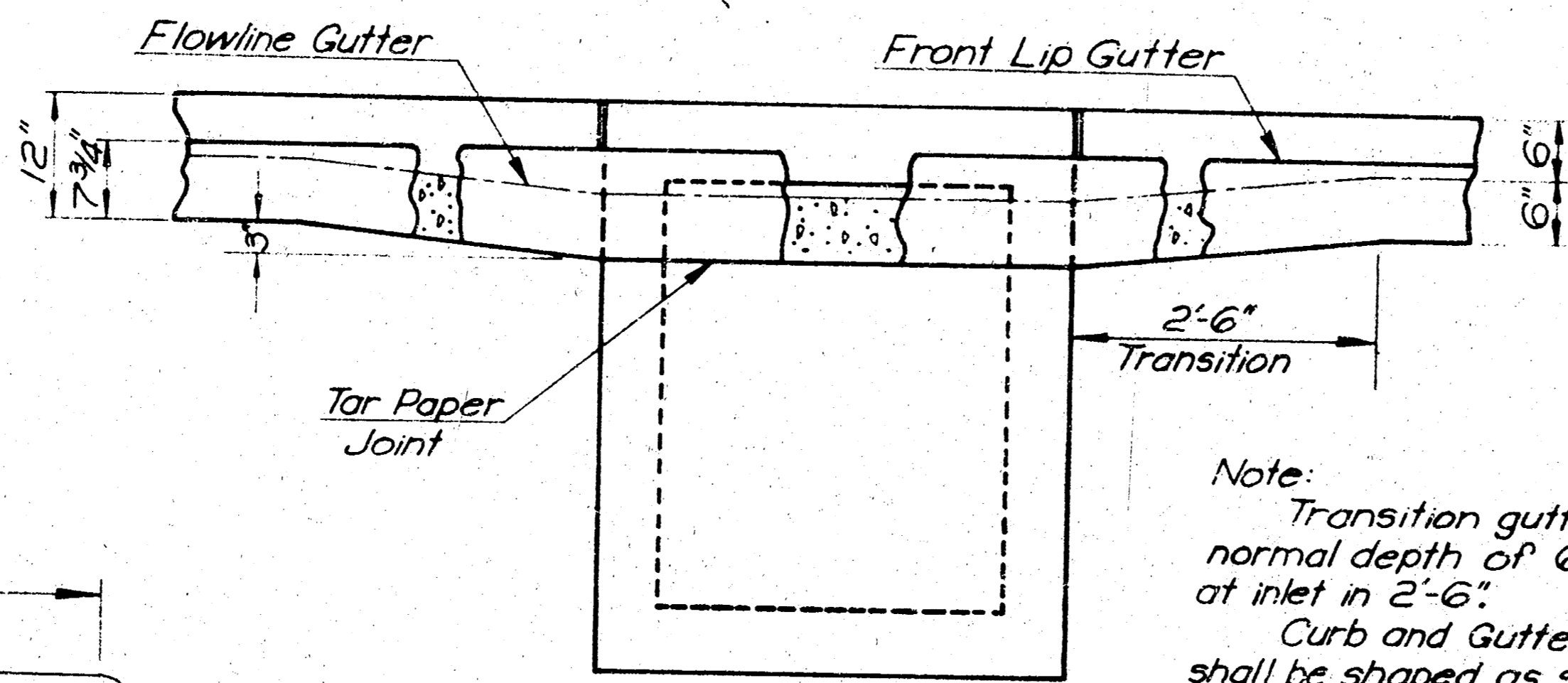
When directed by the Engineer, small openings may be required in the back of the inlet in order to drain a low area. Reinforcing bars will extend through the opening. No deductions in concrete quantities will be made for these openings.



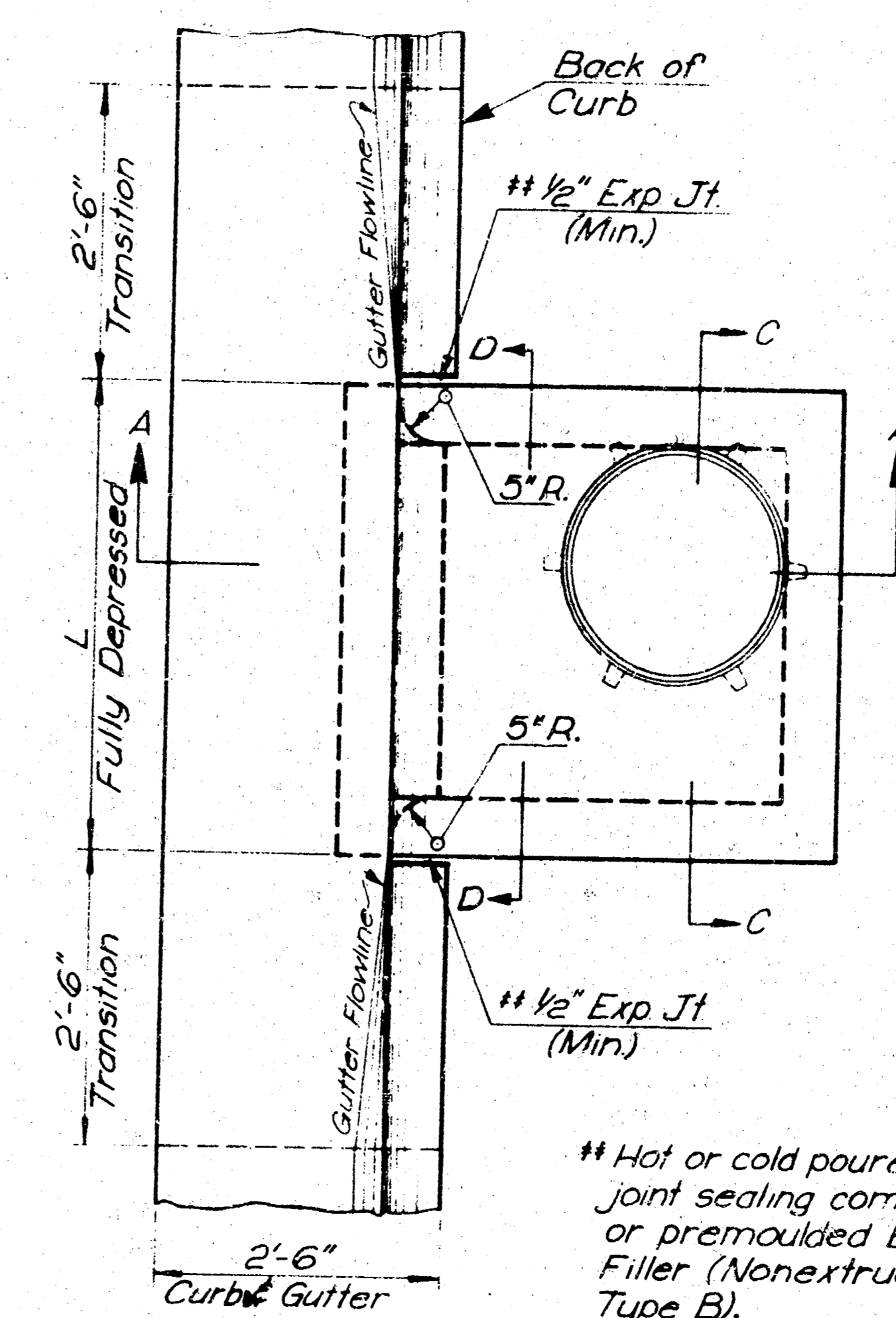
CAST IRON STEP

Scale: 1" = 1'
Weight = 19 lbs.

Note: Steps not to be used where "H" is less than 6 feet.



Note:
Transition gutter from normal depth of 6" to 9" at inlet in 2'-6".
Curb and Gutter sections shall be shaped as shown where required by the installation of curb inlets. This work will be subsidiary to other bid items.



PLAN

** Hot or cold poured joint sealing compound, or preformed Exp. Jt. Filler (Nonextruding, Type B).

NOTE TO CONTRACTOR
This project will be constructed under the supervision of the CITY ENGINEER and conforming to the SPECIFICATIONS of the CITY OF WICHITA. The CONTRACTOR will reimburse the City of Wichita for all cost of Engineering, Plans, and Inspection.

1 INLET AT CHLOE LANE
REINFORCING BAR LIST L=10.0' W=4.5' H=4.0'

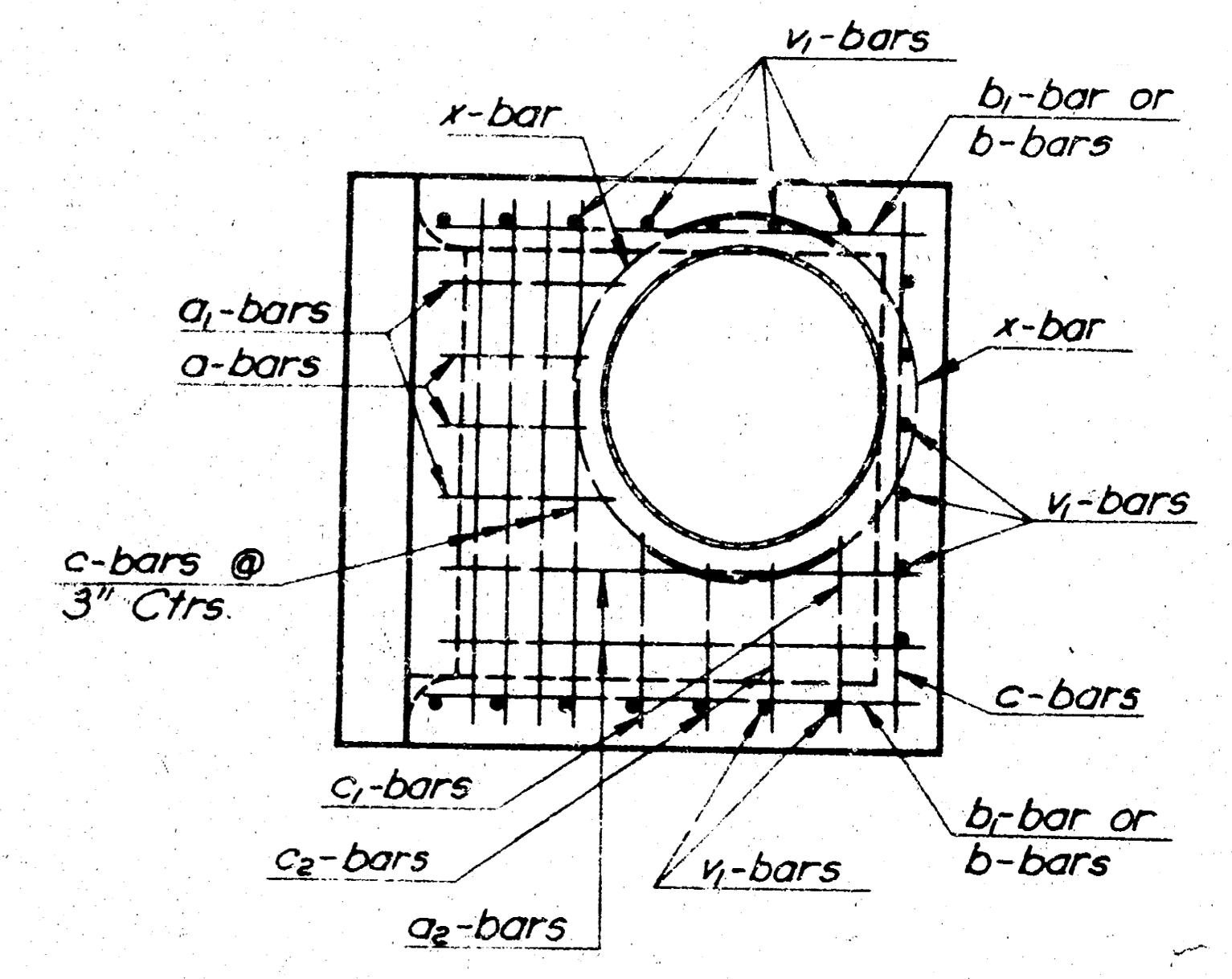
Bar No.	Size	No. of Bars	Length
A	#4	2	2'-6"
A-1	#4	2	3'-0"
A-2	#4	14	9'-1"
B	#4	26	4'-3"
B-1	#4	2	3'-9"
C	#4	24	9'-9"
C-1	#4	4	7'-6"
C-2	#4	4	7'-3"
V	#4	18	2'-9"
V-1	#4	32	3'-9"
X	#4	2	5'-0"

Cast Iron = 117 lbs. Rebar = 483 lbs.
Concrete = 3.0 C. Y. Exc. = 11.6 C. Y.

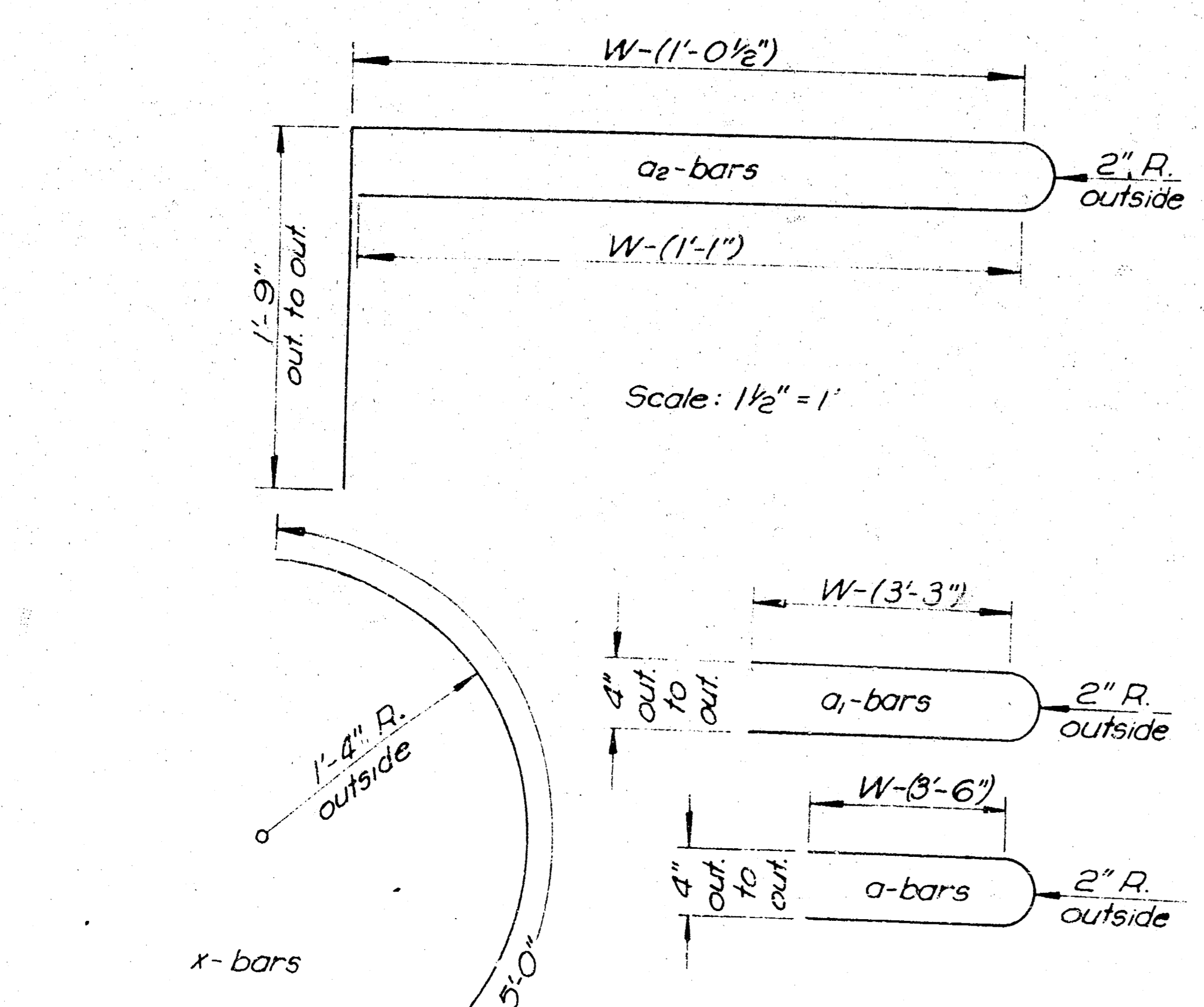
2 INLETS AT DOLL LANE
REINFORCING BAR LIST L=6.0' W=4.5' H=4.5'

Bar No.	Size	No. of Bars	Length
A	#4	2	2'-6"
A-1	#4	2	3'-0"
A-2	#4	6	9'-1"
B	#4	20	4'-3"
B-1	#4	2	3'-9"
C	#4	26	5'-9"
C-1	#4	4	3'-6"
C-2	#4	4	3'-3"
V	#4	10	3'-0"
V-1	#4	24	4'-3"
X	#4	2	5'-0"

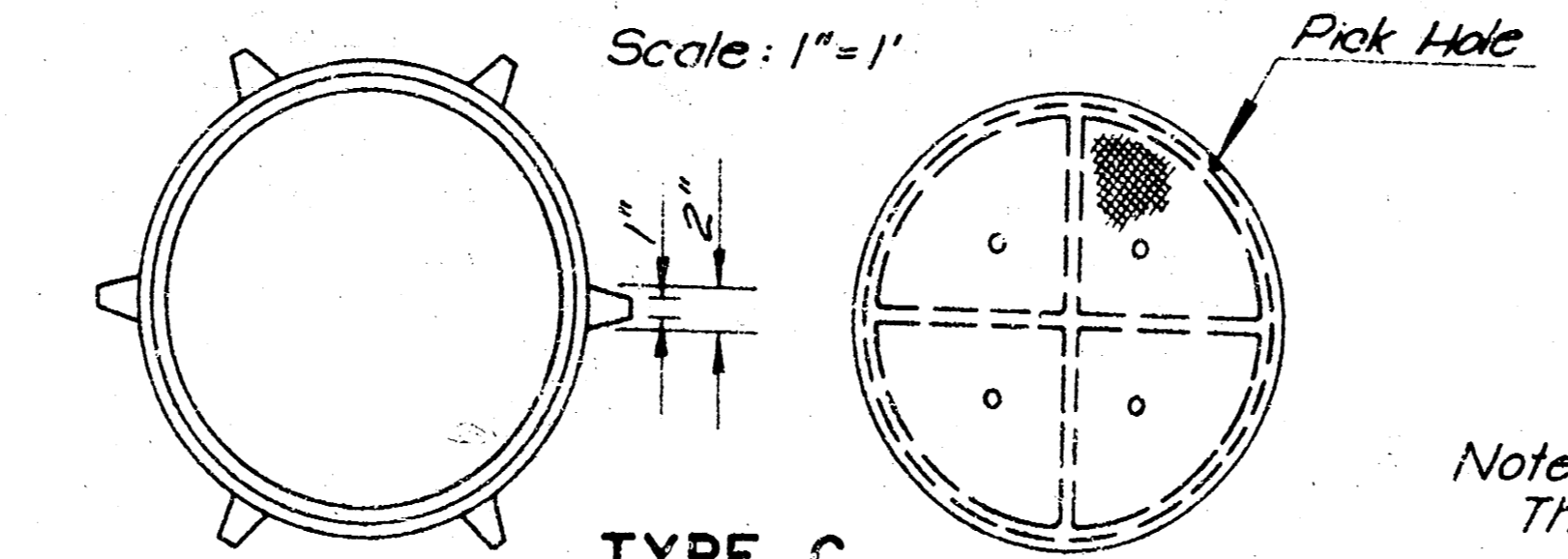
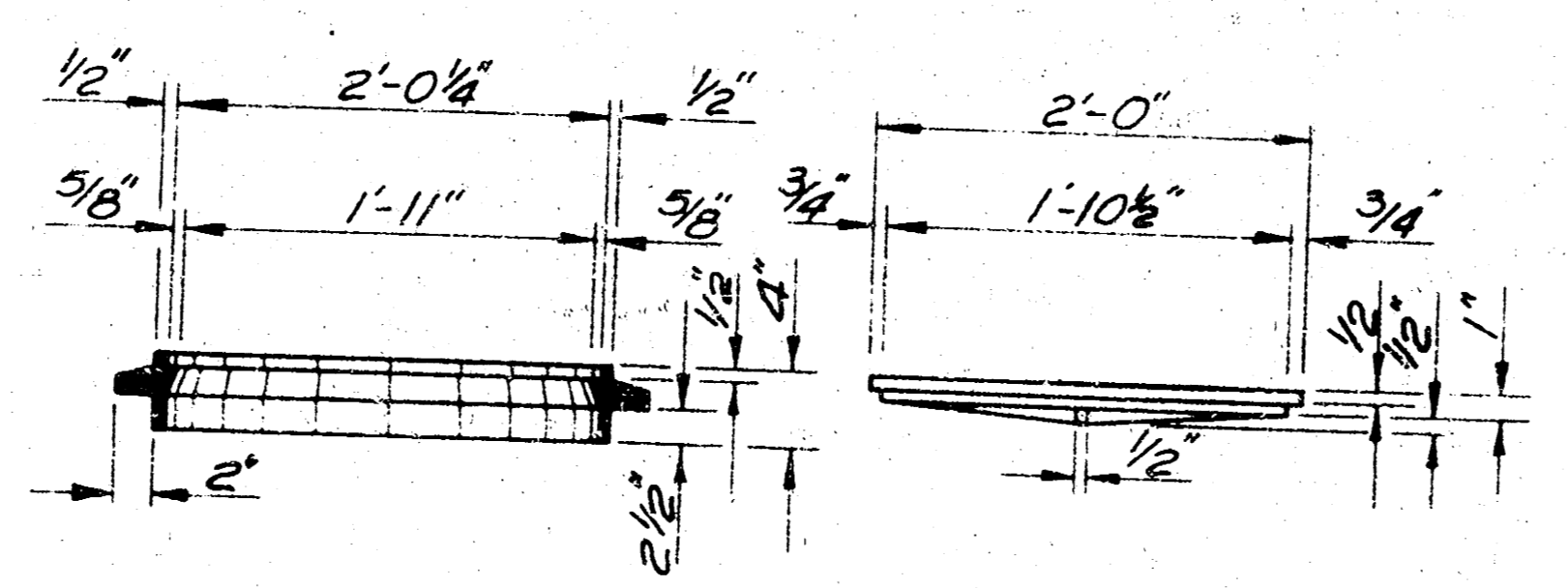
Cast Iron = 117 lbs. Rebar = 318 lbs.
Concrete = 2.1 C. Y. Exc. = 8.7 C. Y.



SECTION B-B



BENDING DIAGRAMS



TYPE C
CAST IRON MANHOLE RING Weight = 53 Lbs.
CAST IRON MANHOLE COVER Weight = 64 Lbs.
LIGHT TYPE MANHOLE COVER & RING

Note:
The weight of castings includes no allowance for fillets and over-runs.
All castings shall be gray iron and shall comply with ASTM A-48 Class 25 S.

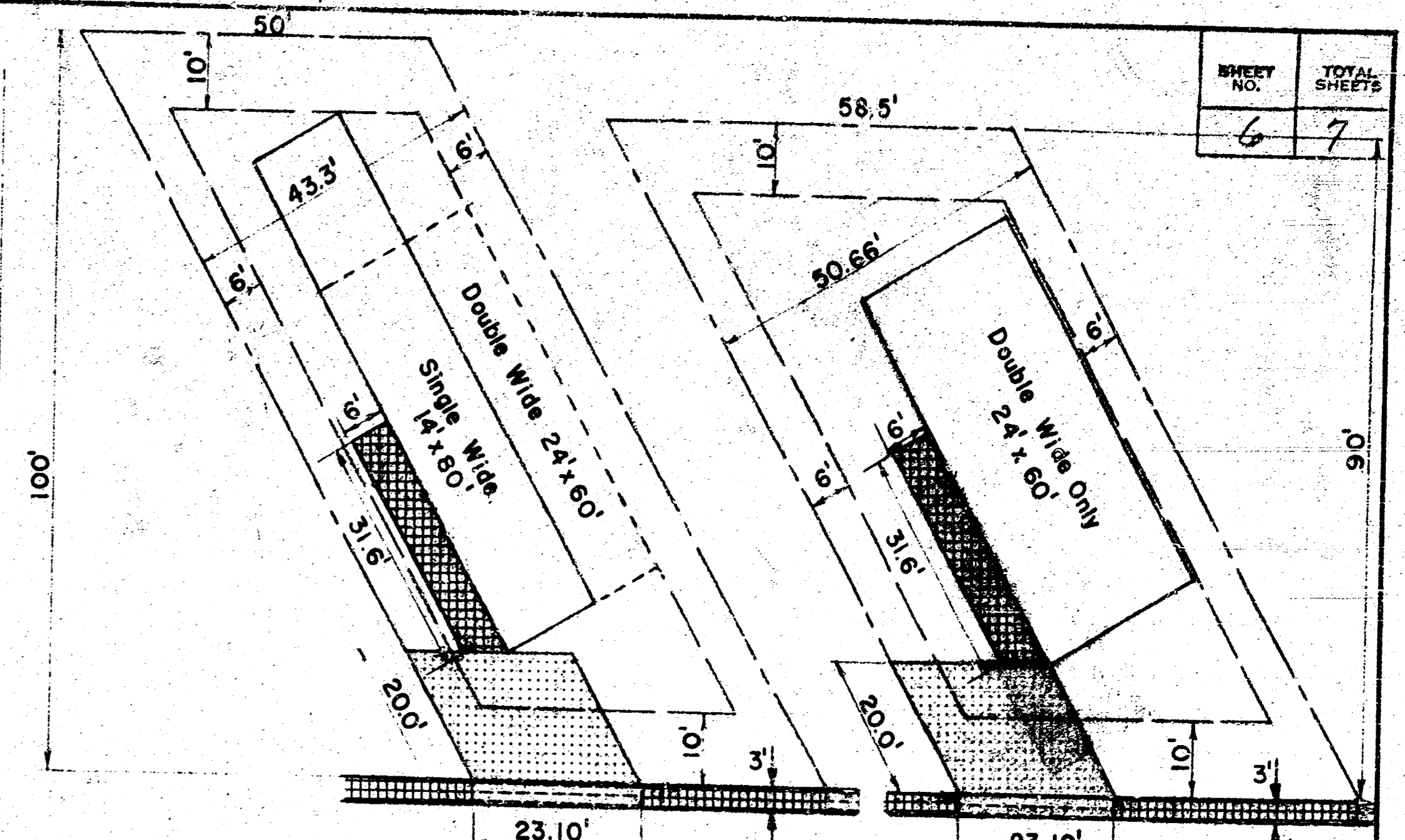
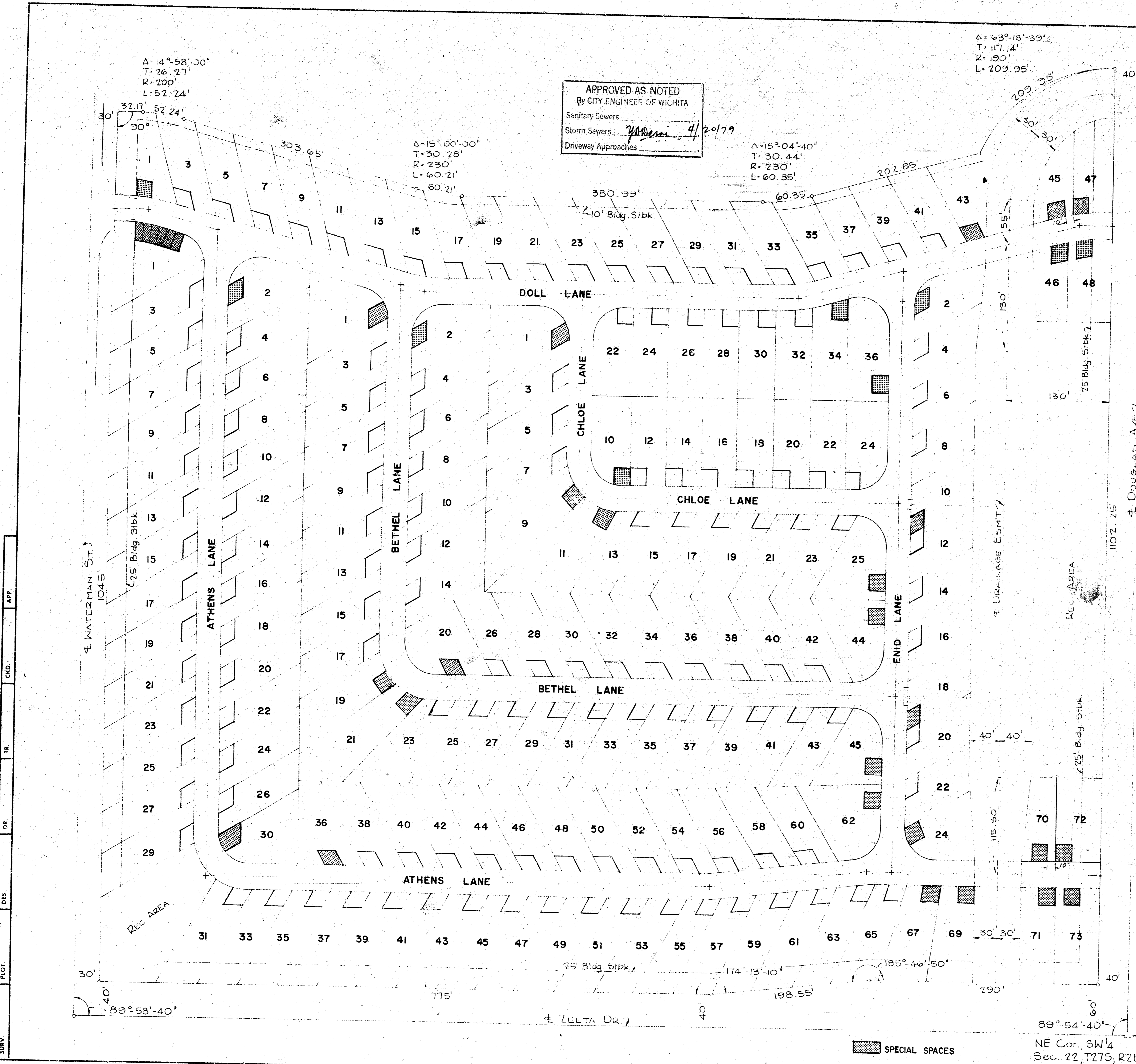
3-10-76 Revised Pay Item
12-1-75 Allow peak core, on All Man. Edg. too!
W.L.H. L.R.P.
W.L.H. L.R.P.

KANSAS DEPARTMENT OF TRANSPORTATION
TYPE 22
CURB INLET
STD. NO. 646
June 27, 1974

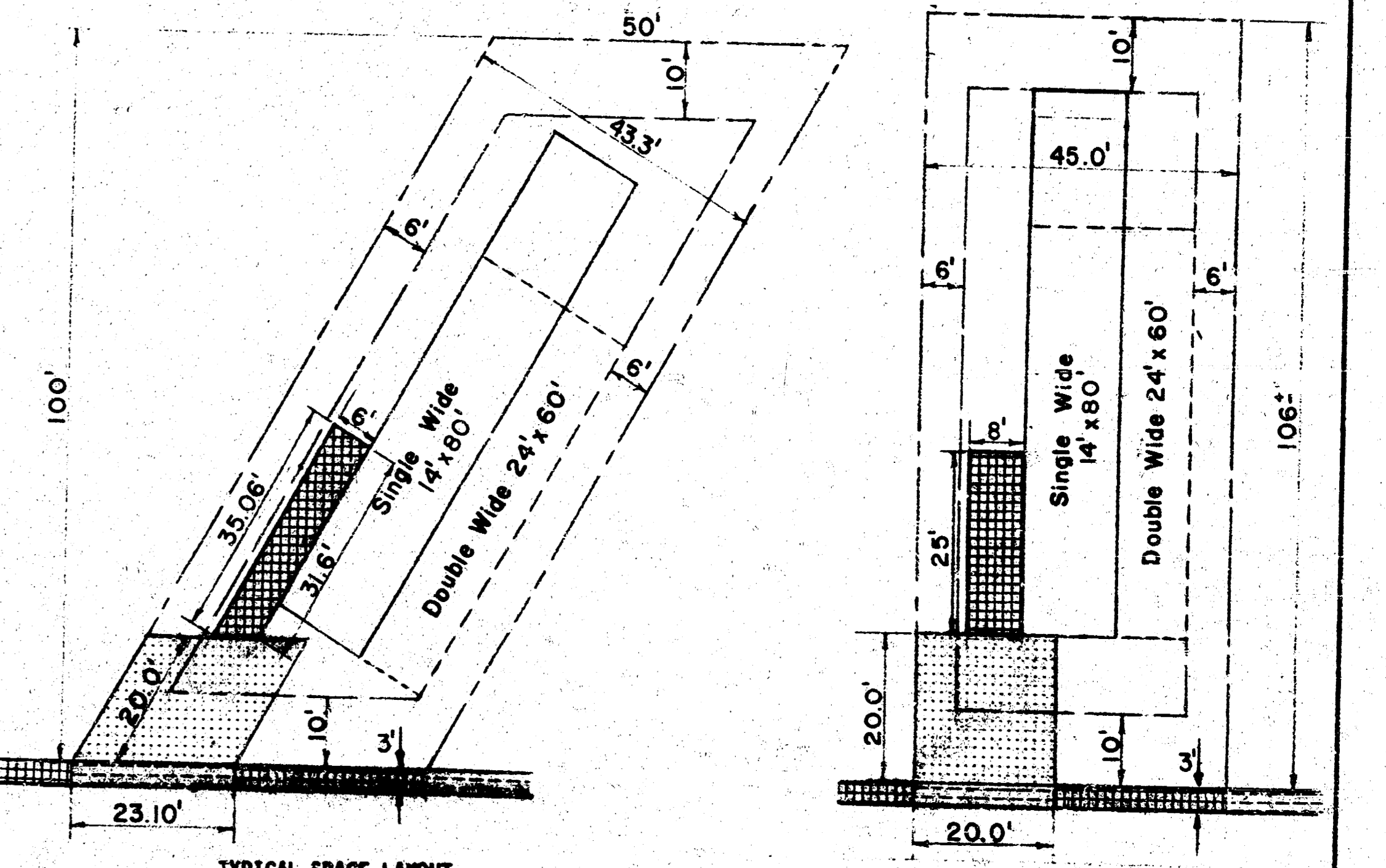
SHEET NO. OF SCALE 3/4" = 1' APP'D
DESIGNED BY Seitz QUANTITIES Seitz TRACED D. Lester
DESIGN CK H. Hoch QUAN CK H. Hoch

AVAILABLE FROM THE BEST FILMED COPY

APPROVED AS NOTED
 By CITY ENGINEER OF WICHITA
 Sanitary Sewers
 Storm Sewers
 Driveway Approaches



TYPICAL SPACE LAYOUT
 Doll Lane Spaces 3, 5, 7, 9, 11, 13, 15, 17, 19, 21, 23, 25, 27, 29, 31, 33, 35, 37, 39 & 41.
 Athens Lane Spaces 3, 4, 5, 6, 7, 8, 9, 10, 11, 12, 13, 14, 15, 16, 17, 18, 19, 20, 21, 22, 23, 24, 25, 26, 27, 29, 38, 40, 42, 44, 46, 48, 50, 52, 54, 56, 58 & 60.
 Bethel Lane Spaces 3, 4, 5, 6, 7, 8, 9, 10, 11, 12, 13, 14, 15, 17, 26, 28, 30, 32, 34, 36, 38, 40 & 42.
 Chloe Lane Spaces 3, 5 & 7.



TYPICAL SPACE LAYOUT
 Athens Lane Spaces 31, 33, 35, 37, 39, 41, 43, 45, 47, 49, 51, 53, 55, 57, 59, 61, 63 & 65.
 Bethel Lane Spaces 23, 25, 27, 29, 31, 33, 35, 37, 39, 41 & 43.
 Chloe Lane Spaces 13, 15, 17, 19, 21 & 23.

NOTE TO CONTRACTOR
 This project will be constructed under the supervision of the CITY ENGINEER and conforming to HIS SPECIAL ORDINANCES OF THE CITY OF WICHITA. THE CONTRACTOR will reimburse the City of Wichita for all cost of Engineering, Plans, and Inspection.

LEGEND
 4" THICK CONCRETE
 6" THICK CONCRETE
 4" THICK CONCRETE WITH 6X6-W6X6 WOVEN WIRE MESH

SPECIAL SPACES
 Doll Lane Spaces 1, 34, 36, 43, 45, 46, 47 & 48.
 Athens Lane Spaces 1, 2, 30, 36, 62, 67, 69, 70, 71, 72 & 73.
 Bethel Lane Spaces 1, 2, 19, 20, 21, 44 & 45.
 Chloe Lane Spaces 1, 9, 10, 11 & 25.
 Enid Lane Spaces 2, 10, 18 & 24.

ENVIRONMENTAL ENTERPRISES INC.
 CECIL MASTERS, PRES.; PAUL TREADWELL, SEC. - TREAS.
 LIFESTYLE MOBILE HOME PARK
TYPICAL AND SPECIAL SPACE LAYOUTS
 DELAMATER, FREUND & ASSOCIATES P.A.
 ENGINEERS & ARCHITECTS
 WICHITA, KANSAS

SCALE 1" = 60'
 DATE
 Dwg. No. 249-D-214
 APPROVED AS NOTED

AVAILABLE COPY FROM THE BEST FILMED FROM THE BEST