

B.M. 10553 "B" in Burial, W.S. Int. of S.E. Ida & Lincoln
 B.M. 10445 Standard Washington & Lincoln
 B.M. 10446 N.E. cor. R.R. sig light base S.S. Lincoln, 100' W of Masley
 B.M. 10563 "K" in Keller, c. W. S. (E.S. of S.L.) (S.E. Santa Fe & Lincoln)
 B.M. 10676 "M" in Martha I N.E. of N.E. cor. Emporia & Lincoln

Base Lines - 28' x 1/8" of 1/4 Section Line

Total Fill

Prop	City
0	7.7
x-sect	20.2
Plans	27.9
+10%	28
	30.7 cu. yds

Total Excav - Gen.

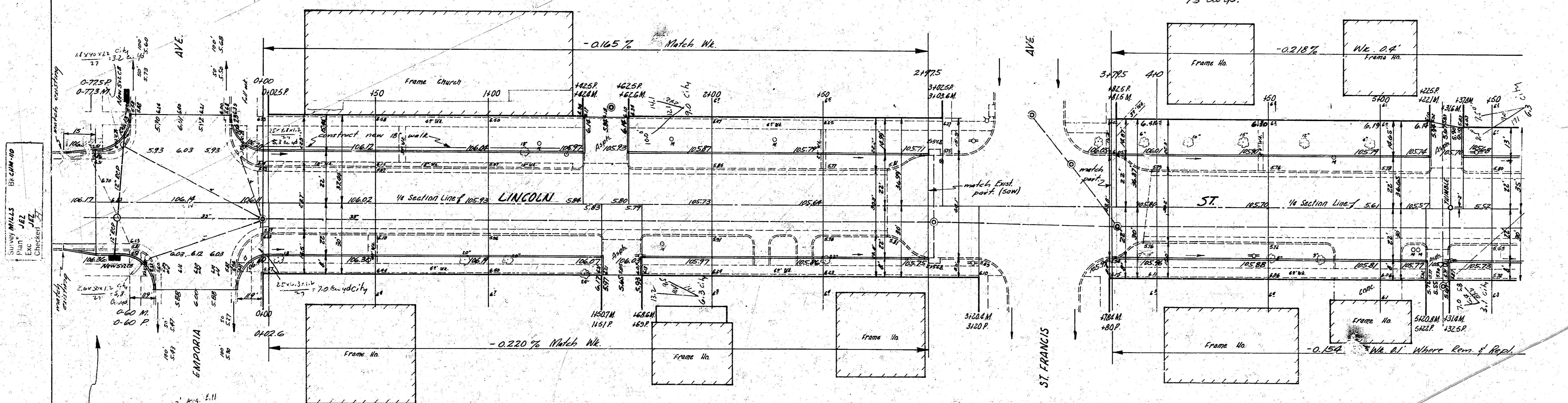
Prop	City
0	40.2
x-sect	23.2
Plans	27.4
+10%	27.1
	298.5 cu. yds

Excav.

Prop	City
0	40.2
	40.2

Total Excav - Hand

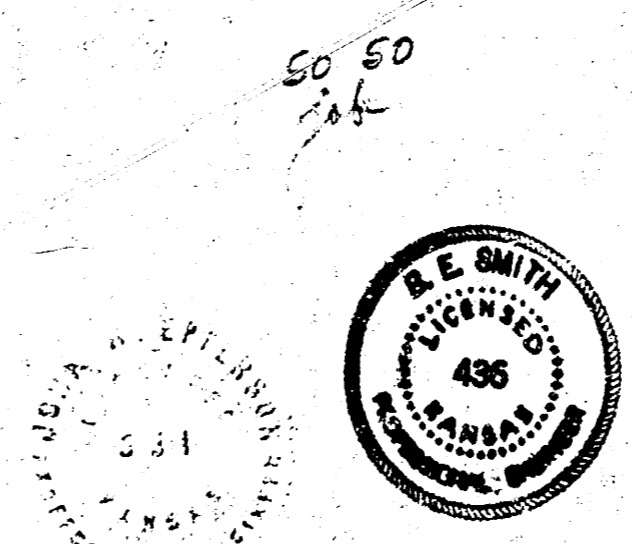
Prop	City
0	0
x-sect	71
+3%	73
	73 cu. yds



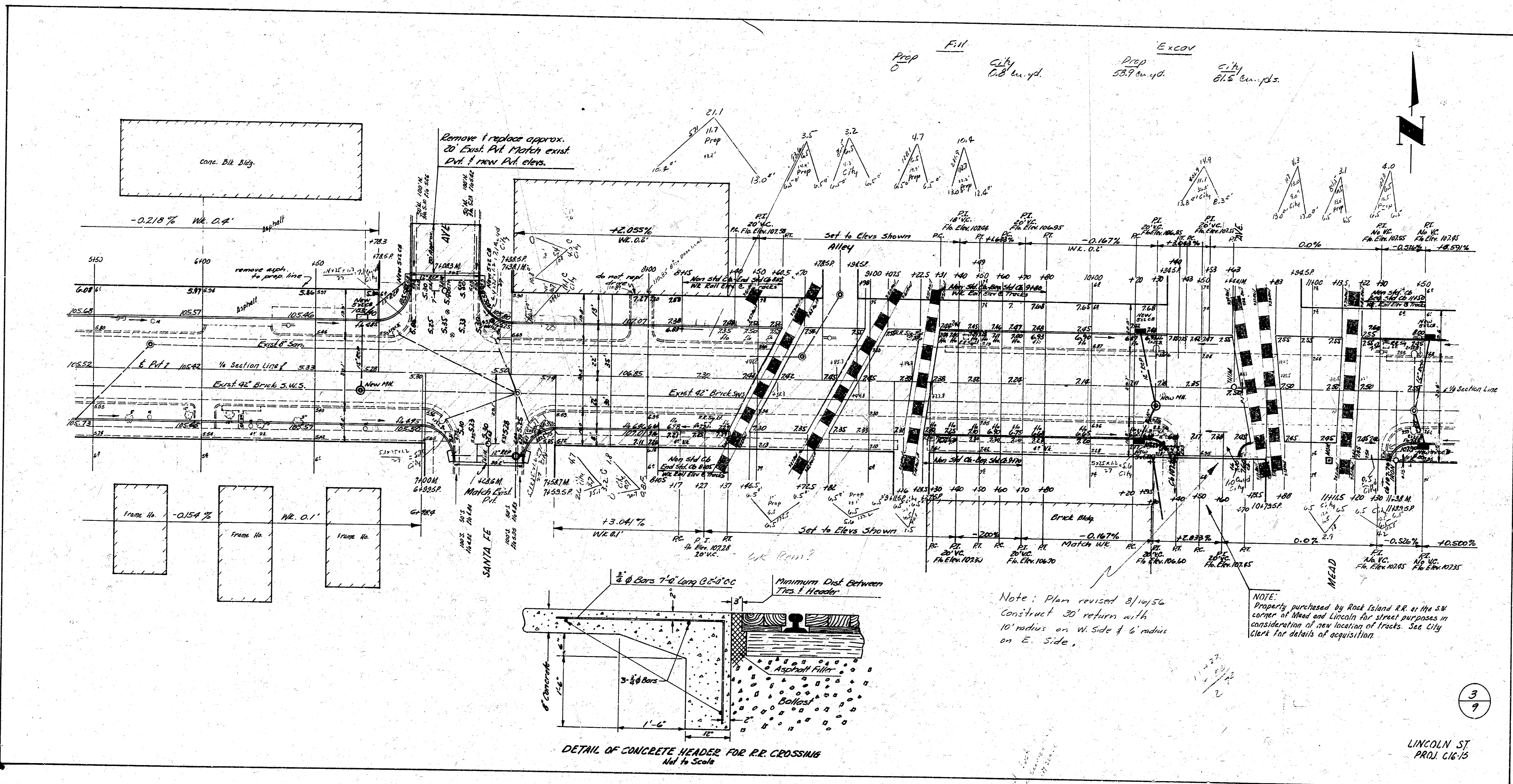
12' x 12' fill City intersection

NOTE: Remove asphalt surface approx 30' west of 0.775 to reduce crown & match new grade of 0.775 with asphalt hook-up. Replace base removed with new conc. base. Remove approx 15' of brick part north of south from intersection to install asphalt hook-up.

2/9



LINCOLN ST.
 W.L. EMPORIA - W.L. IDA
 44'-8" CONC. & C.B.
 CITY OF WICHITA, KANS.
 B.E. SMITH CITY ENGINEER
 JULY 1954 PROJ. C16-15



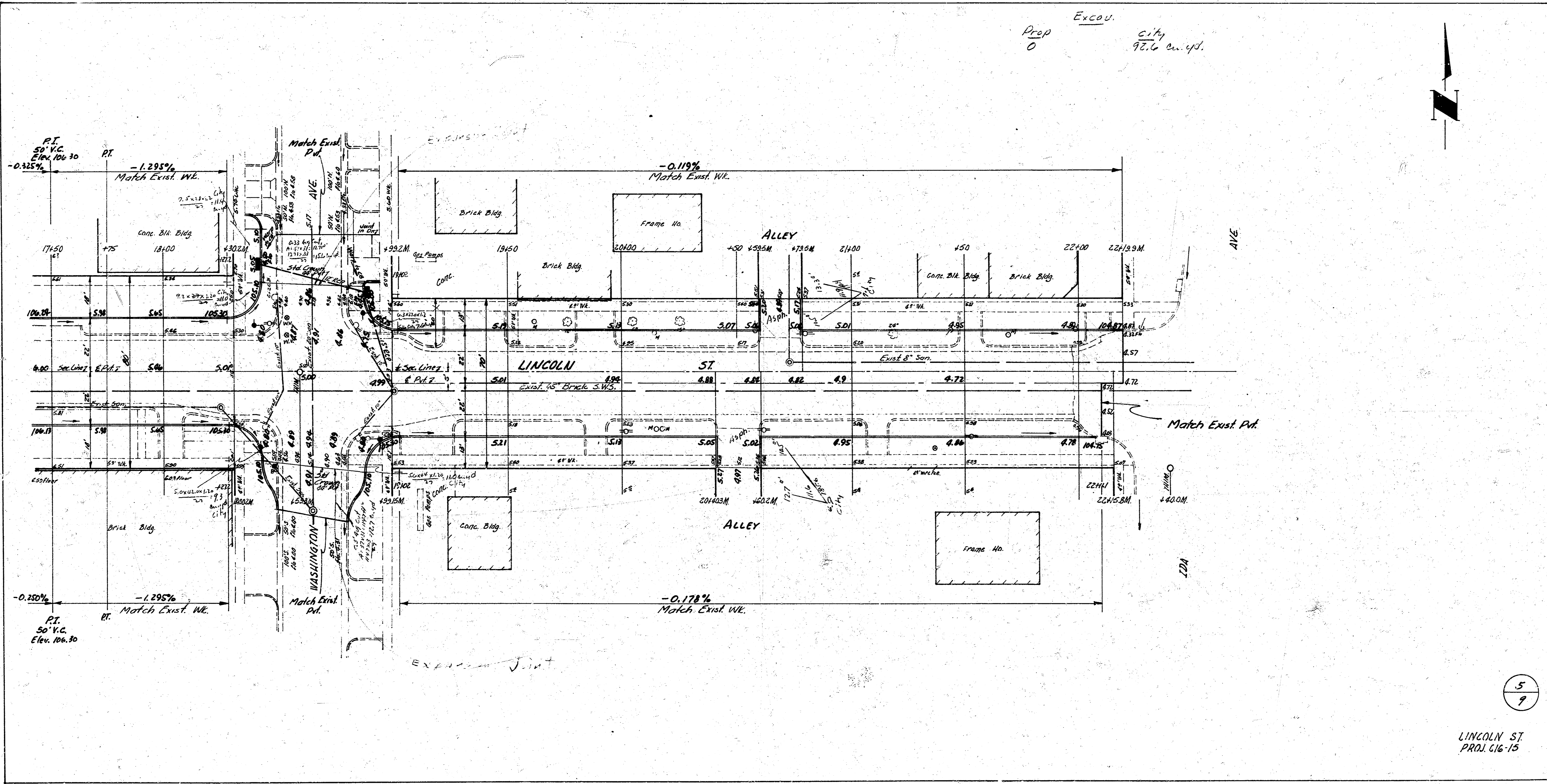
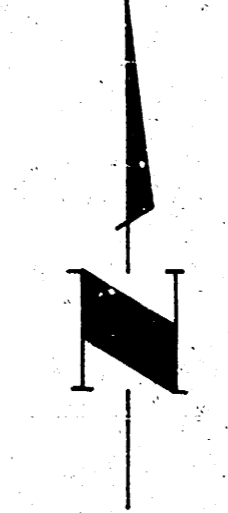
Note: Plan revised 3/10/56
 Construct 30' return with
 10' radius on W. Side & 6' radius
 on E. Side.

NOTE:
 Property purchased by Rock Island R.R. at the SW
 corner of Mead and Lincoln for street purposes in
 consideration of new location of tracks. See City
 Clerk for details of acquisition.

3
 9

LINCOLN ST
 PROJ. C16-15

Prop 0
Excav. City
92.6 cu. yd.

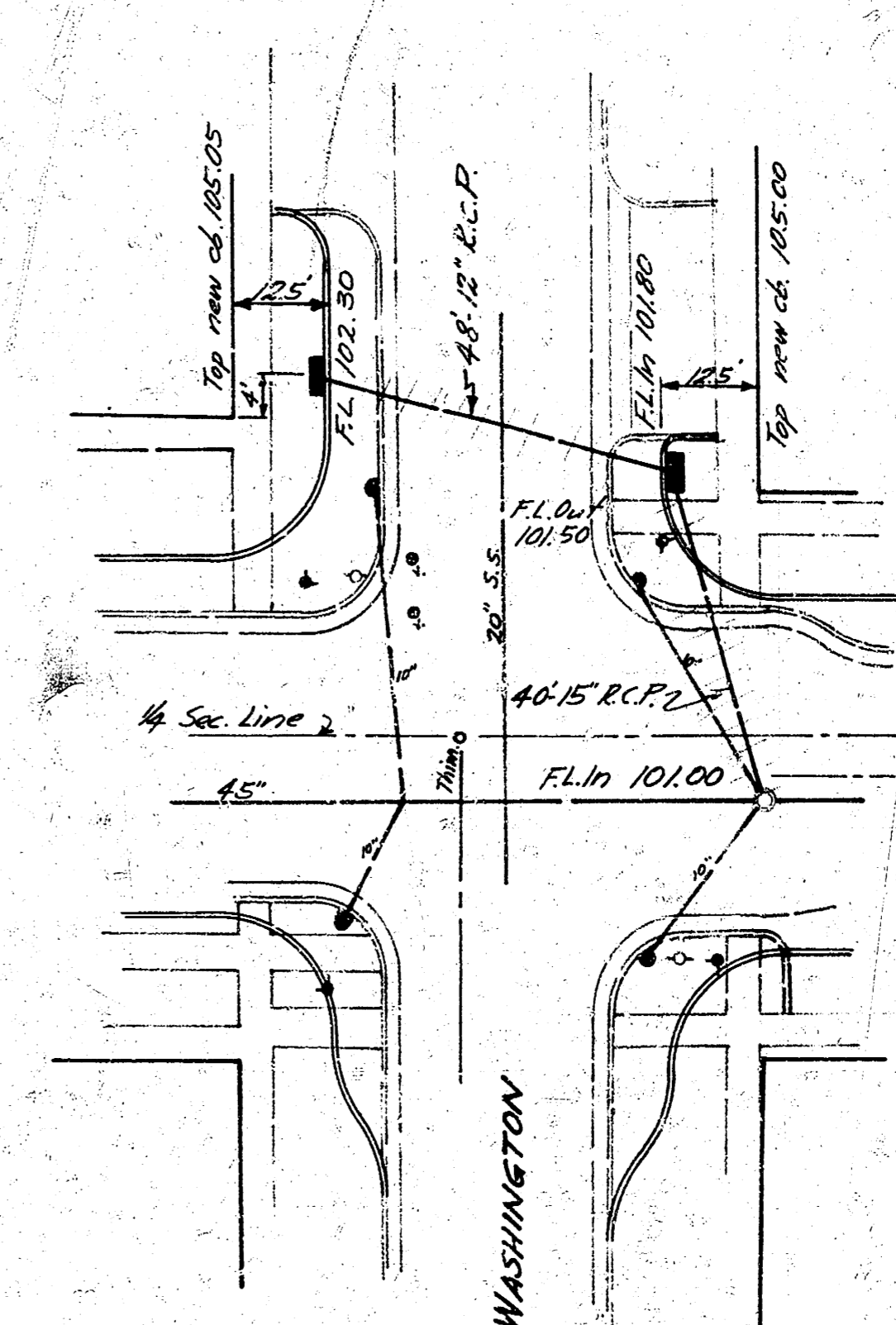
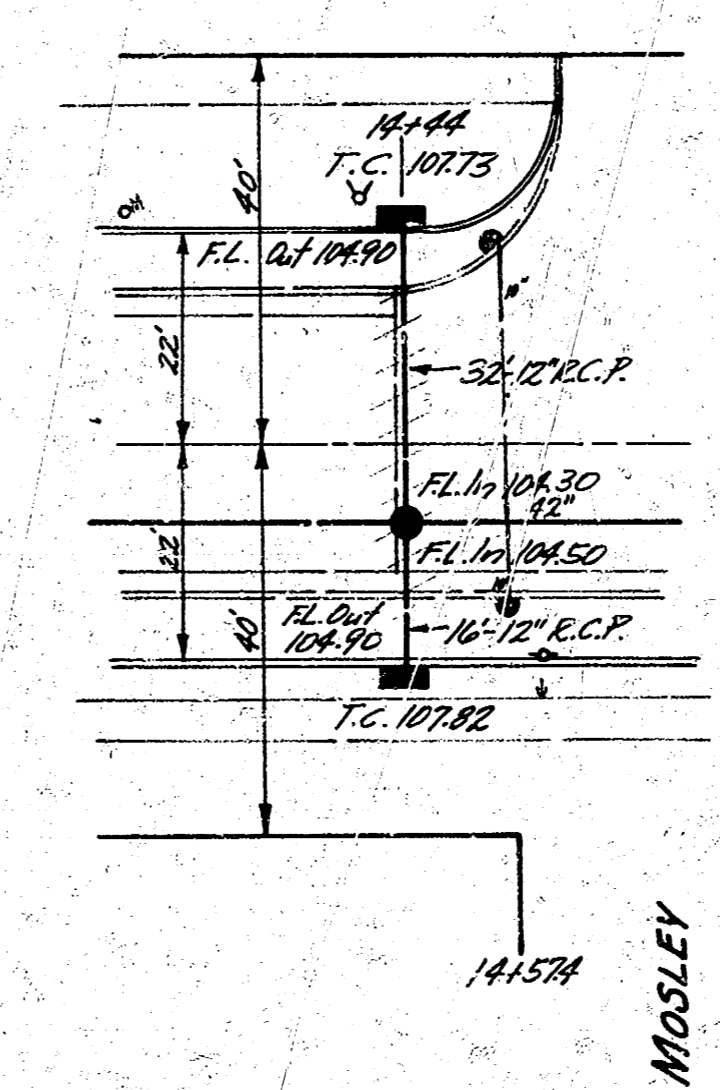
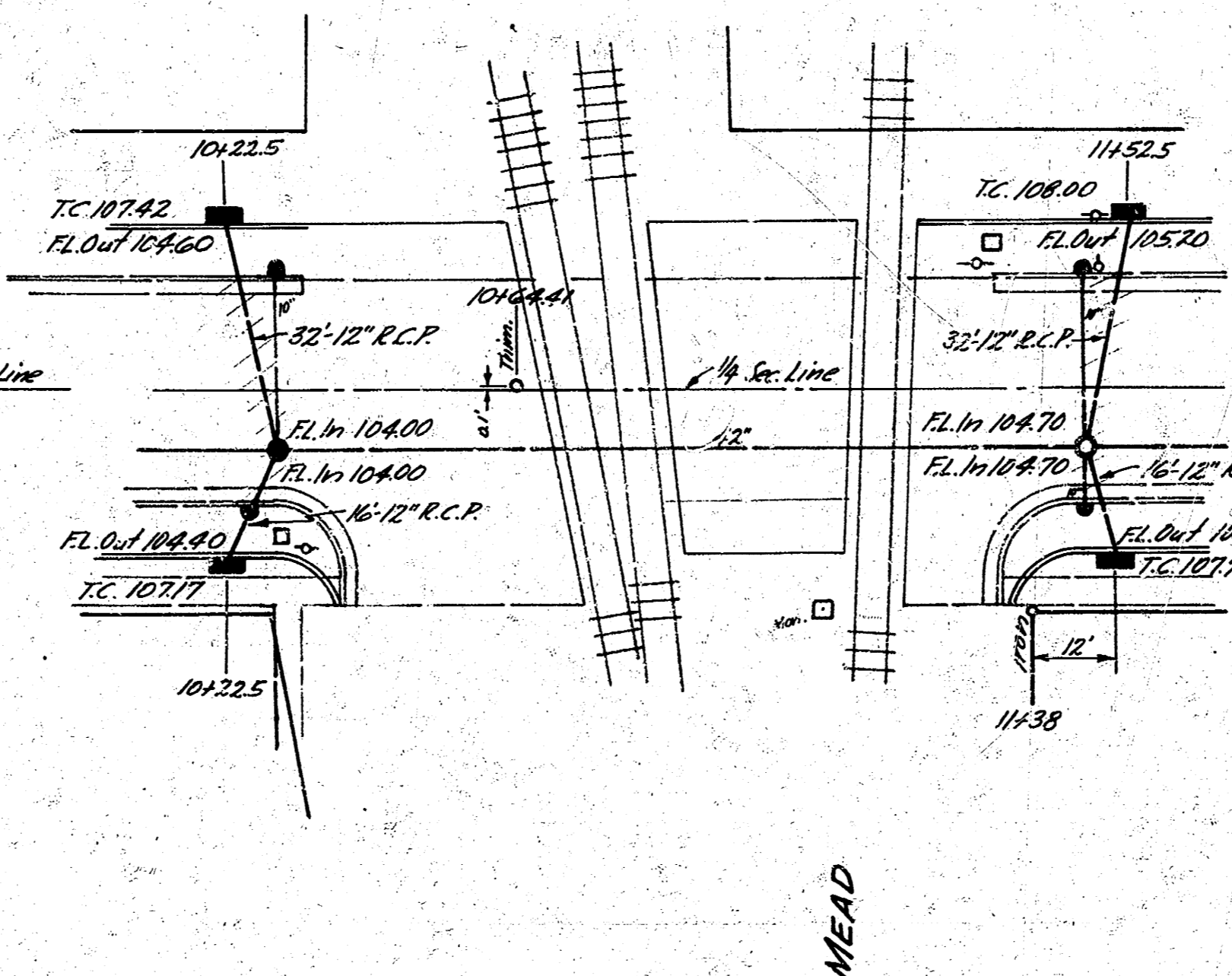
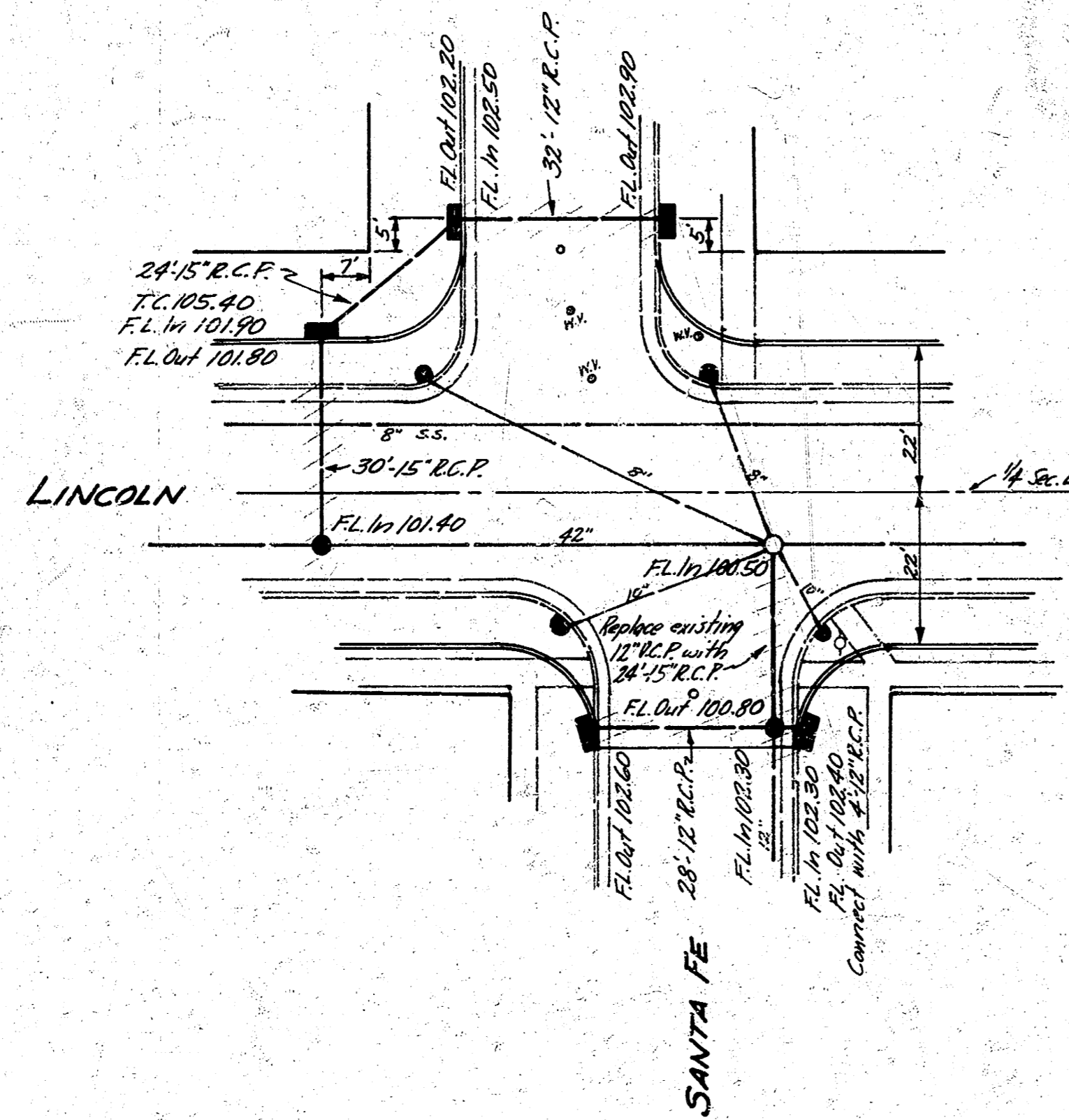
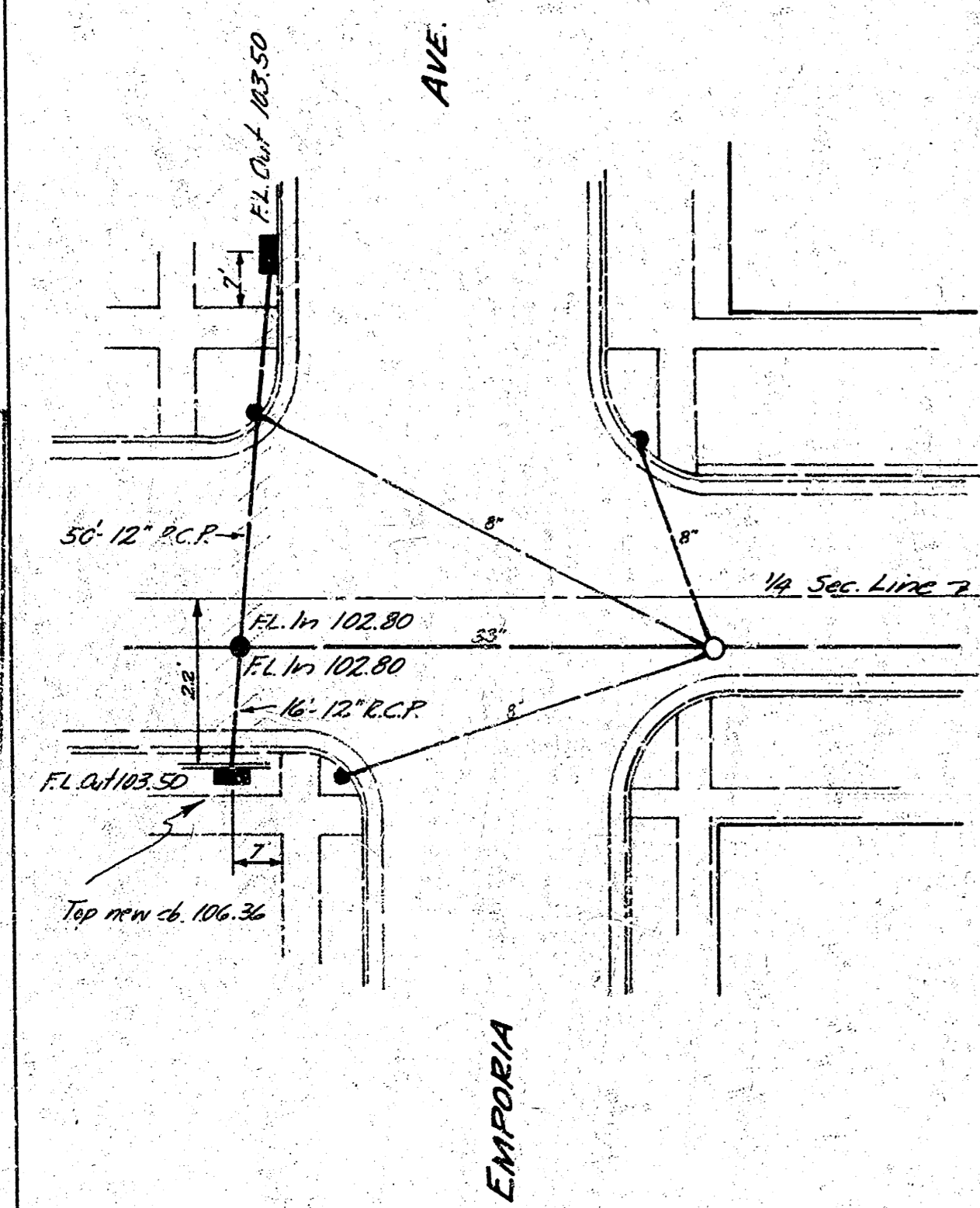


B.M. 106.76 'M' in Martin 1' N.E. of N.E. Cor. Emporia & Lincoln

B.M. 105.63 'K' in Keeler C. W. So. (A.S. of S.L.) S.E. Santa Fe & Lincoln

B.M. 108.46 N.E. Cor. R.R. Sig. Lt. Base S.S. Lincoln, 100' W. of Mosley

B.M. 109.87 'Horn' and S.E. Washington & Lincoln



NOTE: Remove existing 24" C.B.s where necessary only. Plug all existing C.B. leads at C.B.s and at brick sewer.



INCIDENTAL DRAINAGE
LINCOLN ST.
W.L. EMPORIA TO W.L. IDA
CITY OF WICHITA, KANSAS
B.E. SMITH - CITY ENGINEER
PROJECT No. C16-15
JULY, 1956