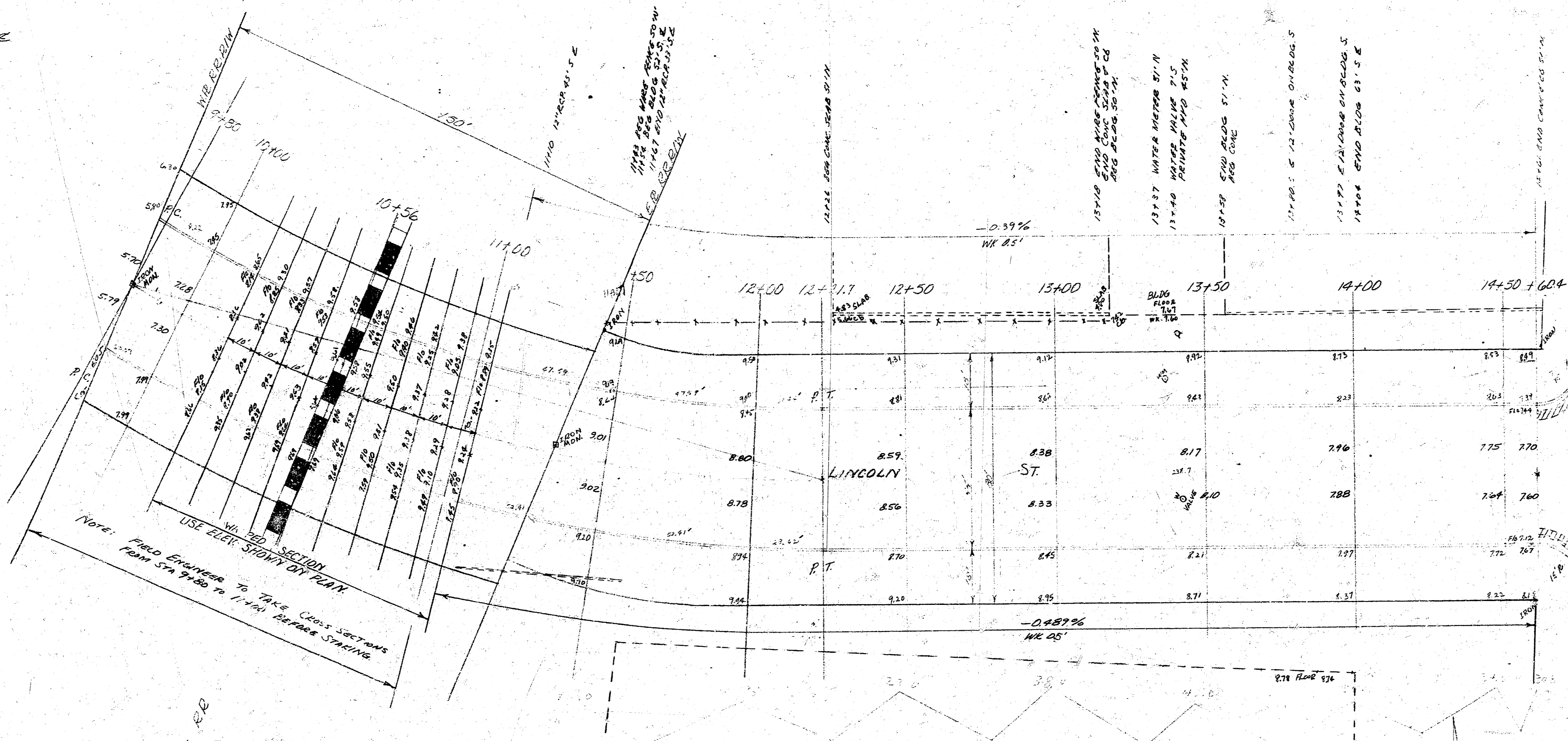


B.M. 106.38 IRON IN THUMB & GEAR C. McCORMICK
 2.17 100.38 "1" ON WEND H. HOBBS LINC. ST. BRIDGE

STATION E



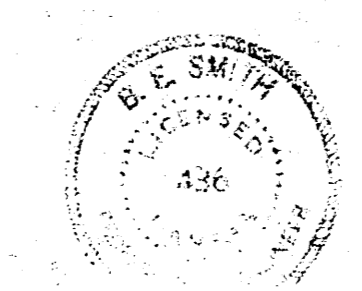
SHOWN ON BK 5300
 PLAN AND
 ELEVATION
 J.E.

Note: FIELD ENGINEER TO TAKE CROSS SECTIONS
 FROM STA 9+00 TO 11+00 BEFORE STARTING

CURVE DATA FOR E. ELEVATION A = 30° 18' R = 455.5'

STA ON E	ARC LENGTH	CHORD	CHORD BEARING	CHORD ANGLE	CHORD DIST.
9+00	5.00	5.12	12.77	10° 12' 31"	17.12' 23"
10+00	5.00	5.12	44.91	5° 08' 41"	4' 24' 08"
11+00	5.00	5.12	86.91	30° 08' 41"	27' 22' 50"
12+00	5.00	5.12	128.91	55° 08' 41"	50' 41' 32"
13+00	5.00	5.12	170.91	80° 08' 41"	73' 52' 08"
14+00	5.00	5.12	212.91	105° 08' 41"	97' 02' 44"
14+50	2.50	2.56	10.36	25° 21' 52"	45' 12' 08"

LINCOLN AVE
 McLEAND VALLEY R.R. TO McLEAN LIND
 31'-4 1/2" CONC & CG
 CITY OF WICHITA KANSAS
 B.E. SMITH CITY ENGINEER
 MAY 1953 PROJ NO. C-15-72



J.E. 10