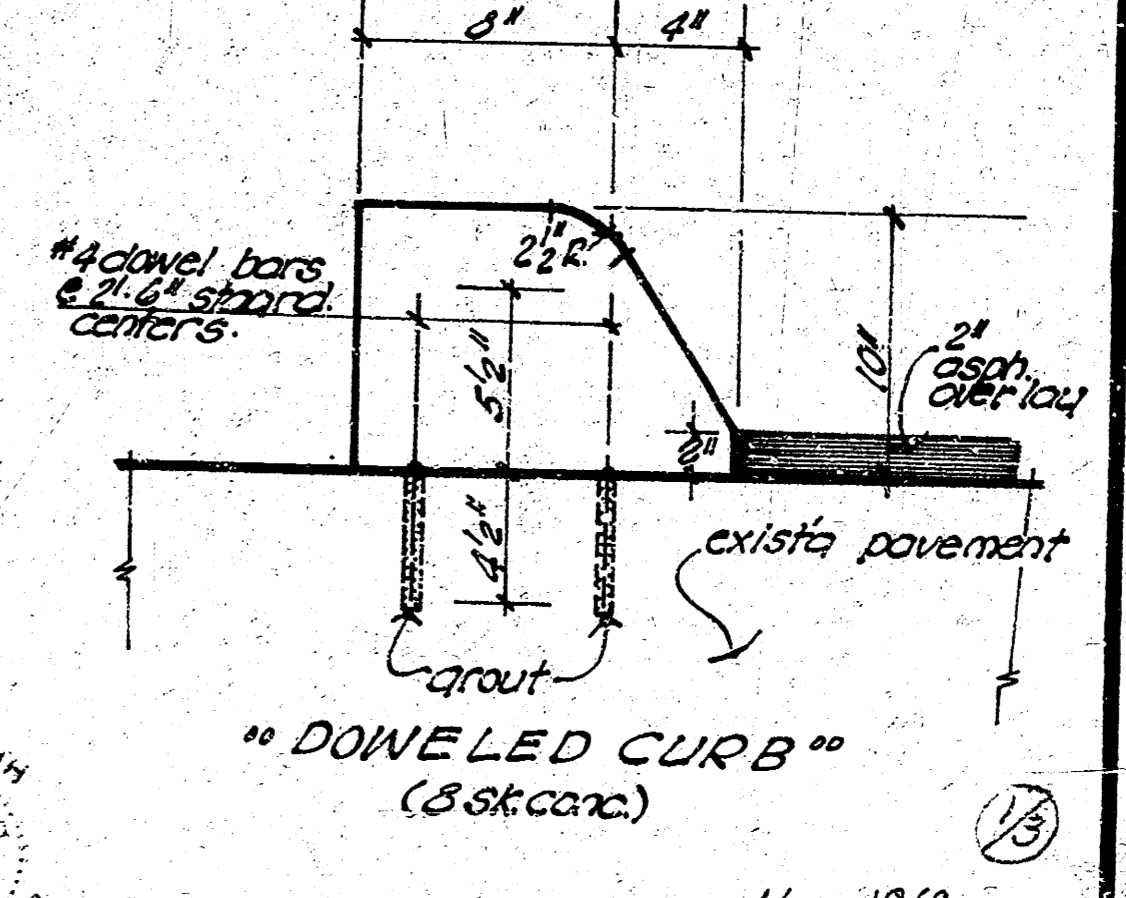
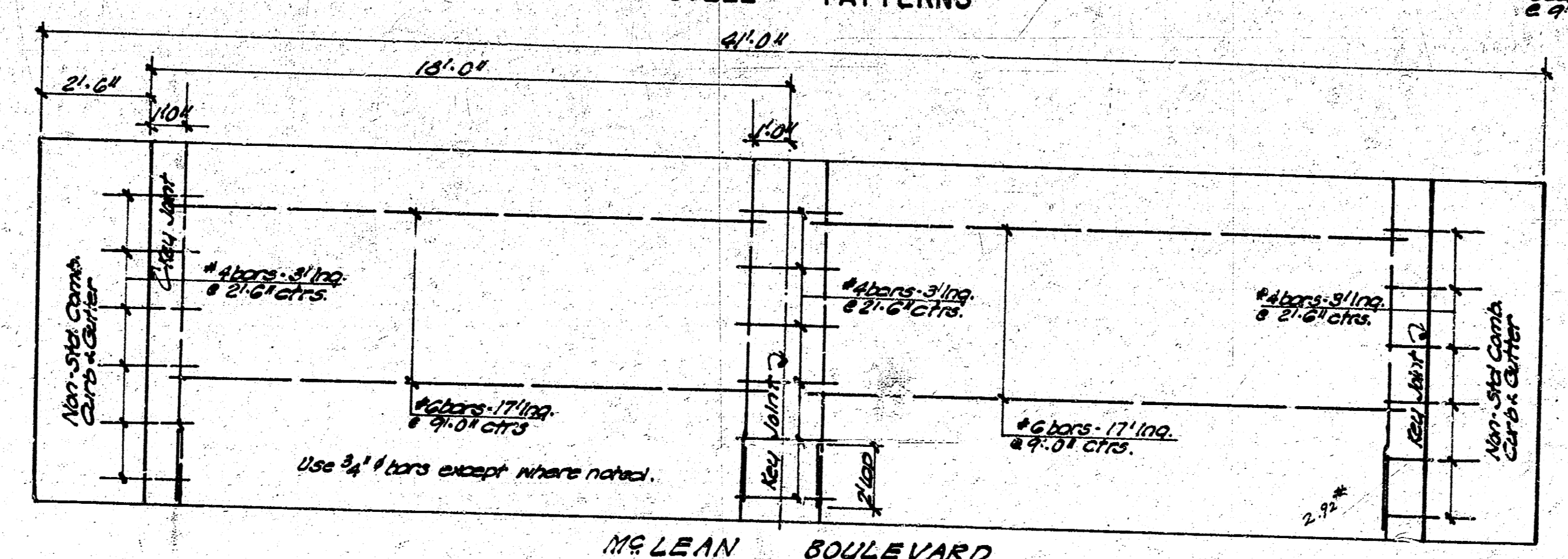
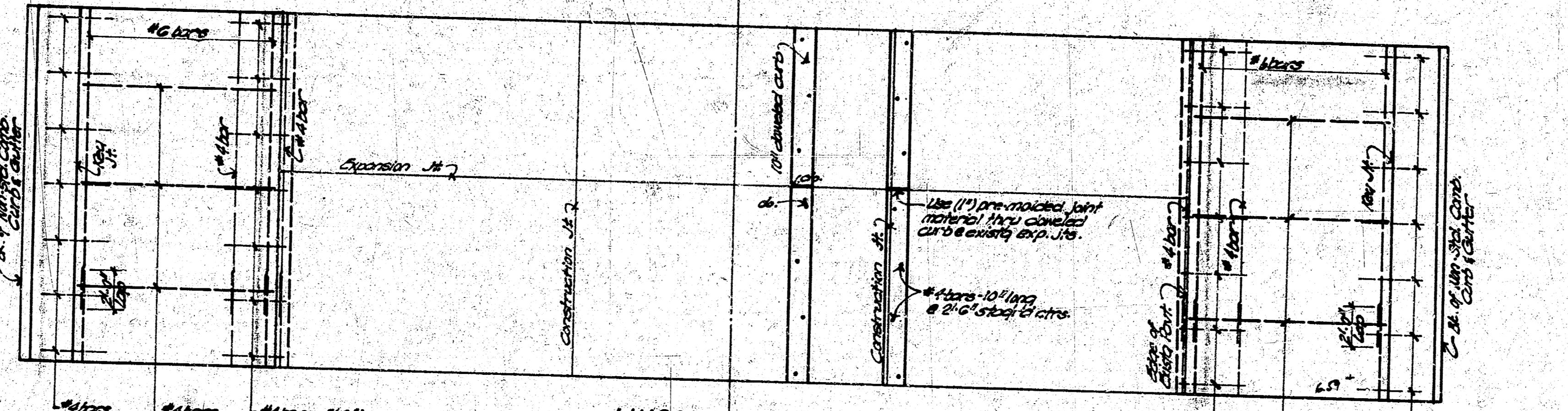
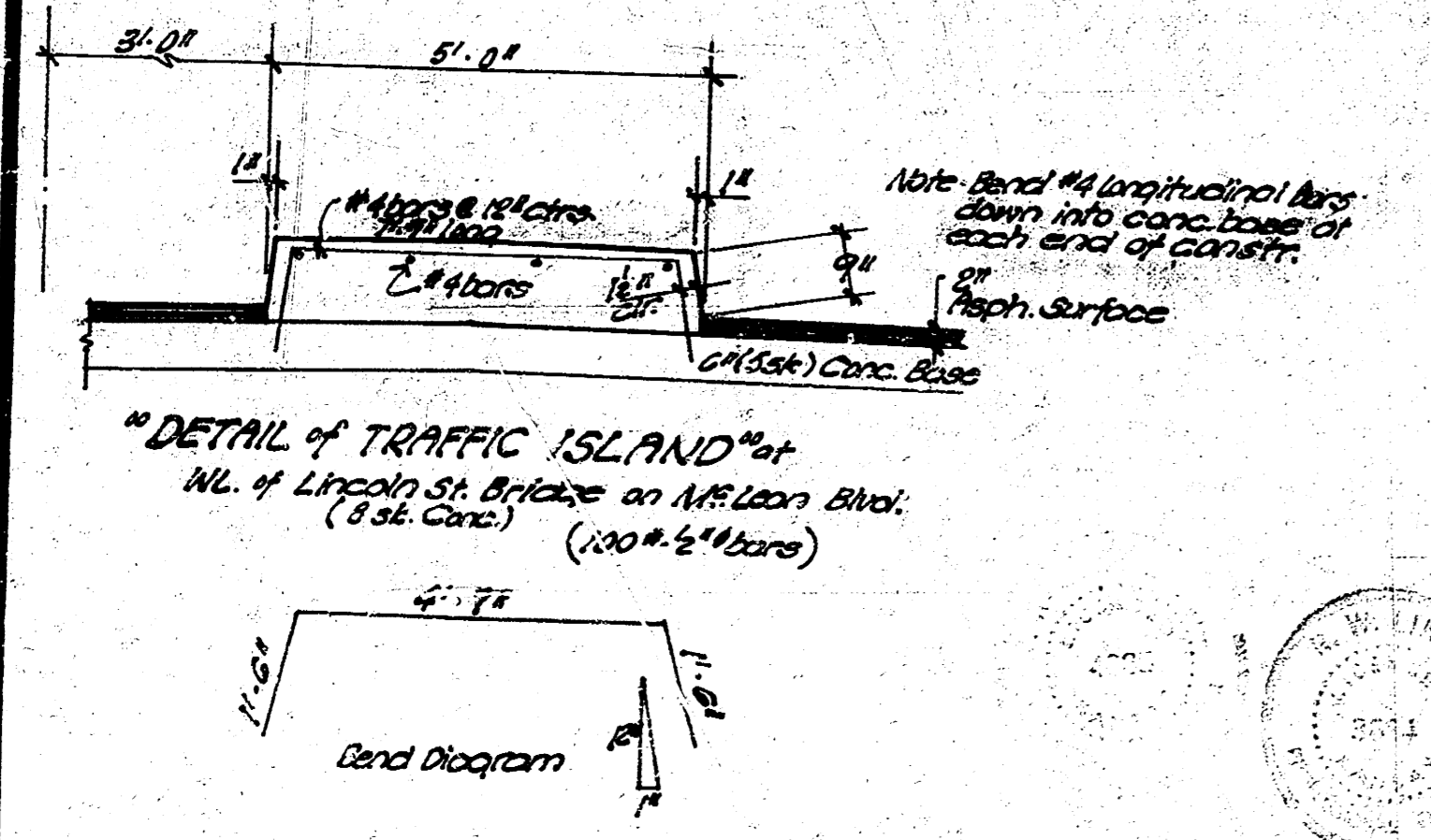
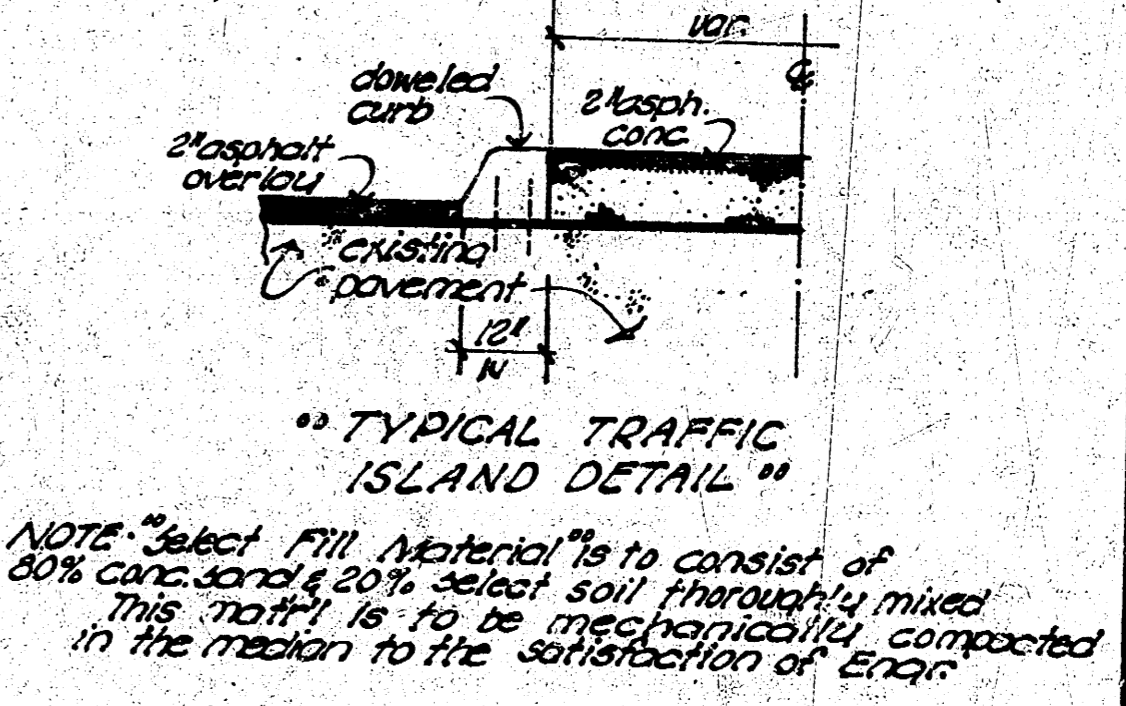
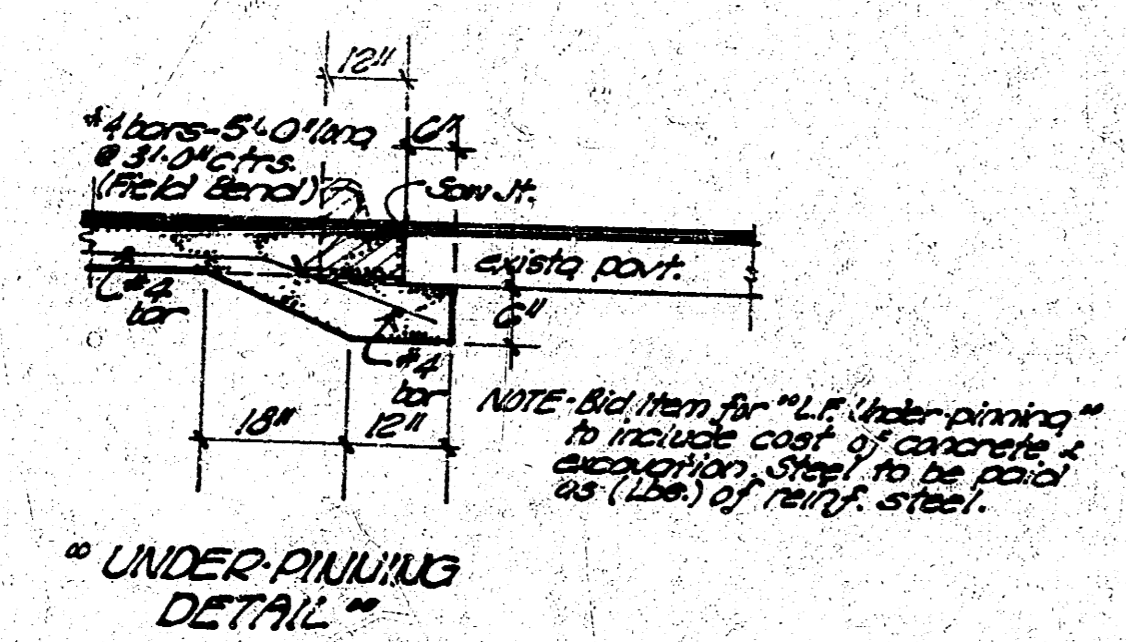
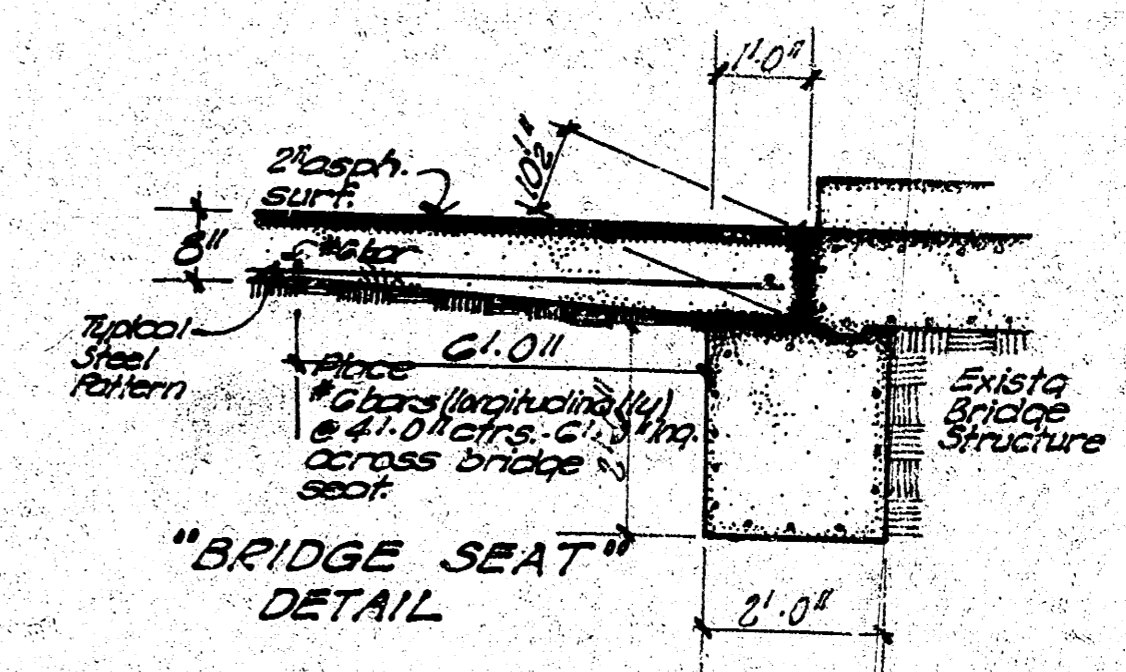
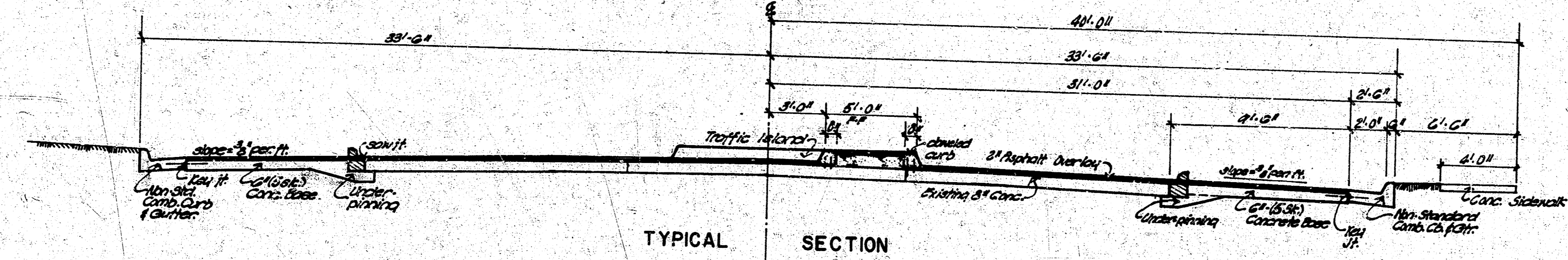


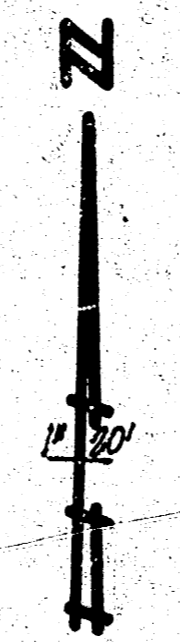
00 LINCOLN STREET 00
 E.L. MIDLAND VALLEY RAILROAD R/W
 LEFT BANK OF ARKANSAS RIVER
 PROJECT NO. C18-46



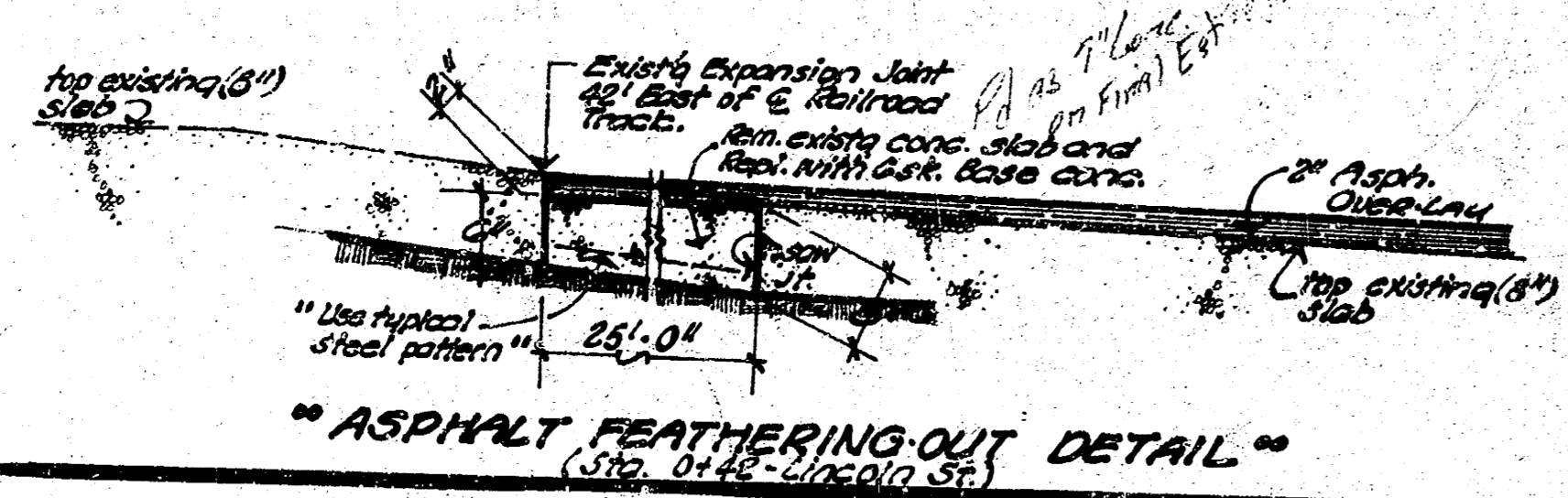
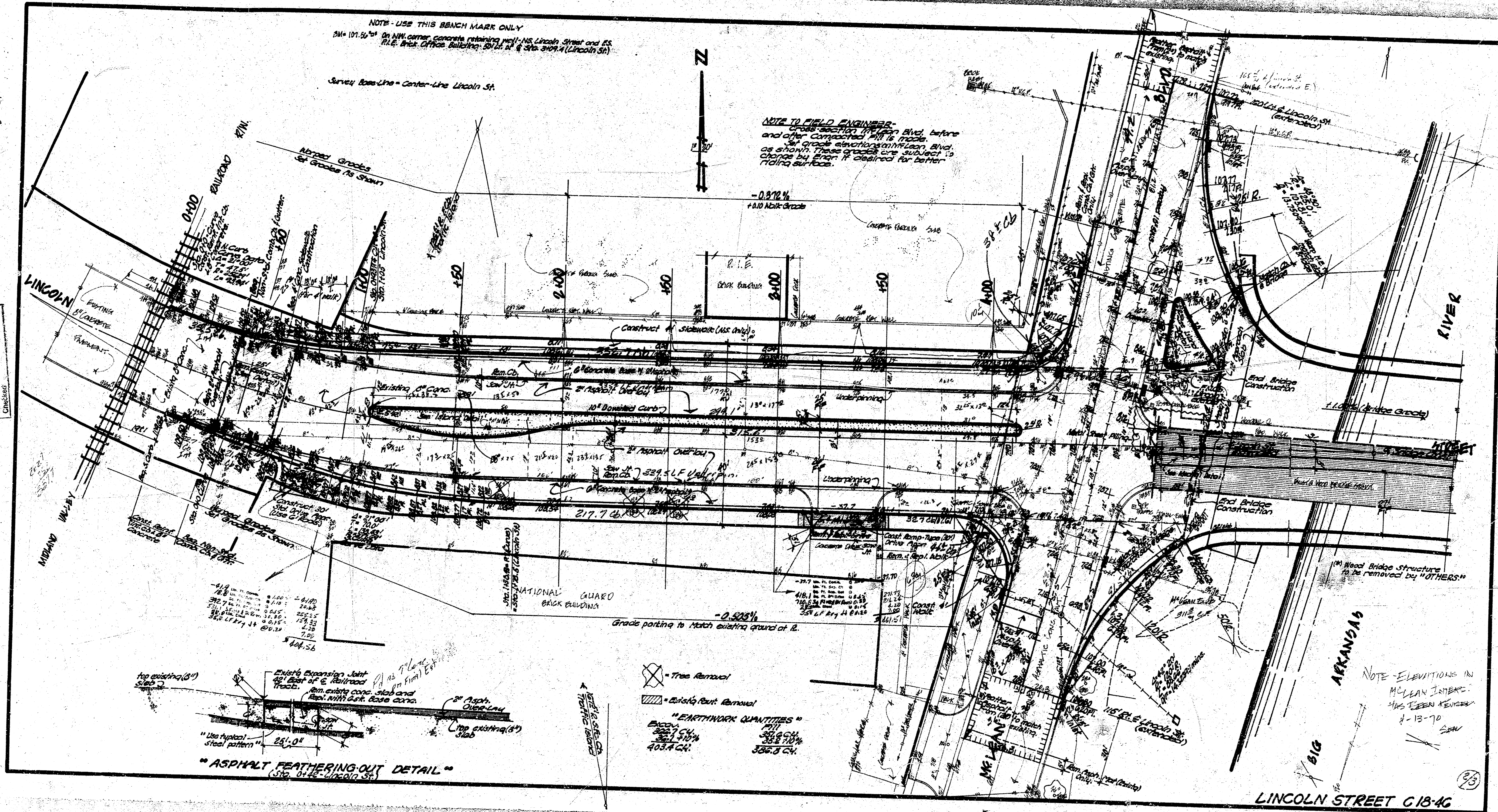
Nov. 1969
 CITY OF WICHITA, KANSAS
 B. E. Smith
 City Engineer

NOTE - USE THIS BENCH MARK ONLY
 BM = 101.50' on NW corner concrete retaining wall - NS Lincoln Street and ES
 R.L.E. Brick Office Building - 20124 St. & 30th St. N (Lincoln St.)

Survey Base Line - Center-Line Lincoln St.



NOTE TO FIELD ENGINEERS:
 Grades shown on this plan are to be checked before and after compaction will be made.
 If grades shown on this plan are to be changed by other means, these changes are subject to change by other means if desired for better fitting surfaces.



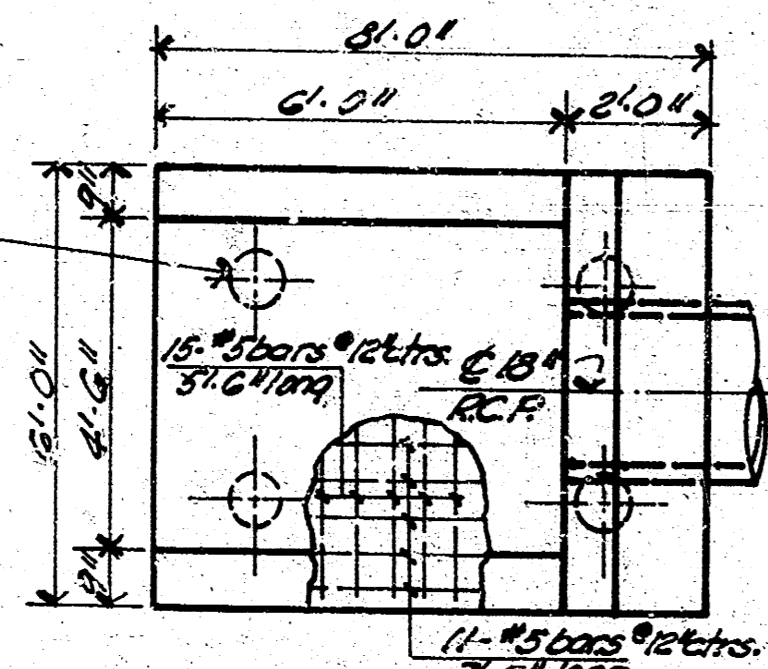
Tree Removal
 Existing Pavement Removal
 "EARTHWORK QUANTITIES"
 2500.0 CU
 250.0 CU
 403.4 CU
 350.0 CU
 350.0 CU

NOTE - ELEVATIONS IN
 McLEAN INTERSECTION
 HAS BEEN REVISIONED
 4-13-70
 S.W.

LINCOLN STREET C-13-46

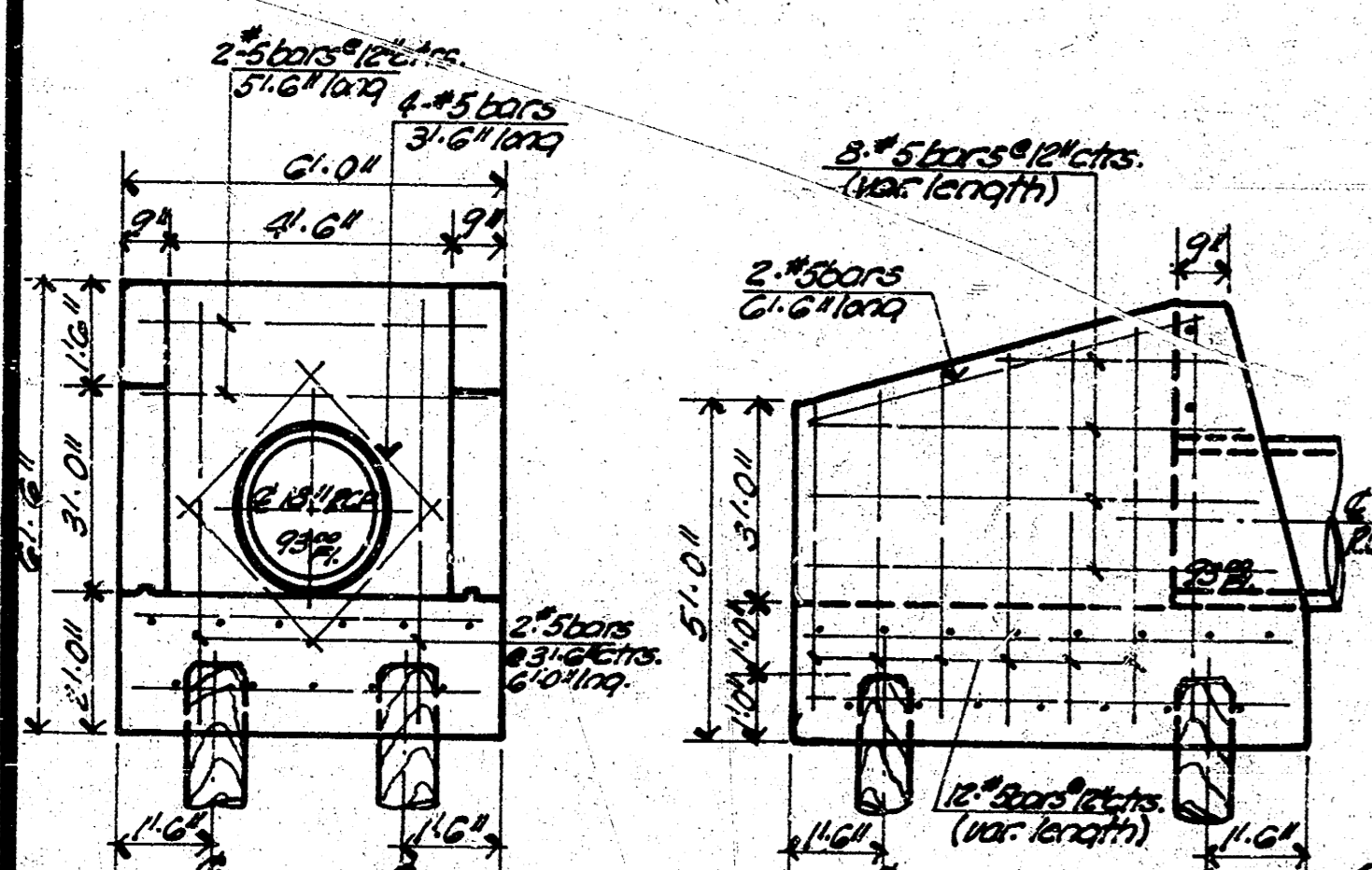
BILL OF MATERIALS	
5.48 cu. (cst) Conc.	
3.35 Lbs. Reinf. Steel	
4-20' x 10" Butt-Treated	
Timber Piles	

24' treated timber pile
10' surf (min) 4 req.



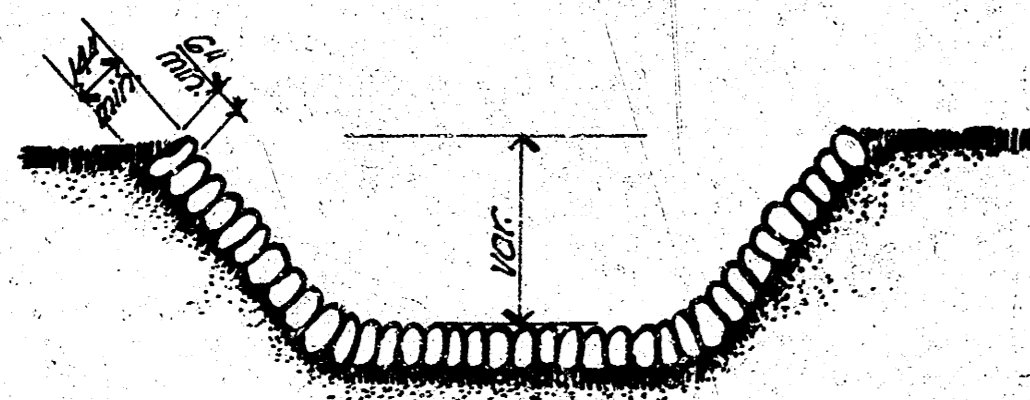
PLAN VIEW

REINF. CONC. OUTFALL STRUCTURE
3' x 11.0'

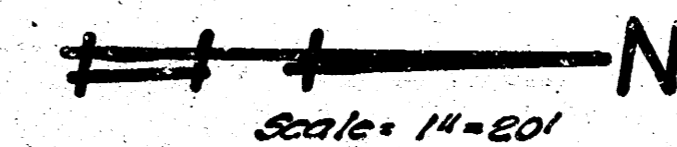
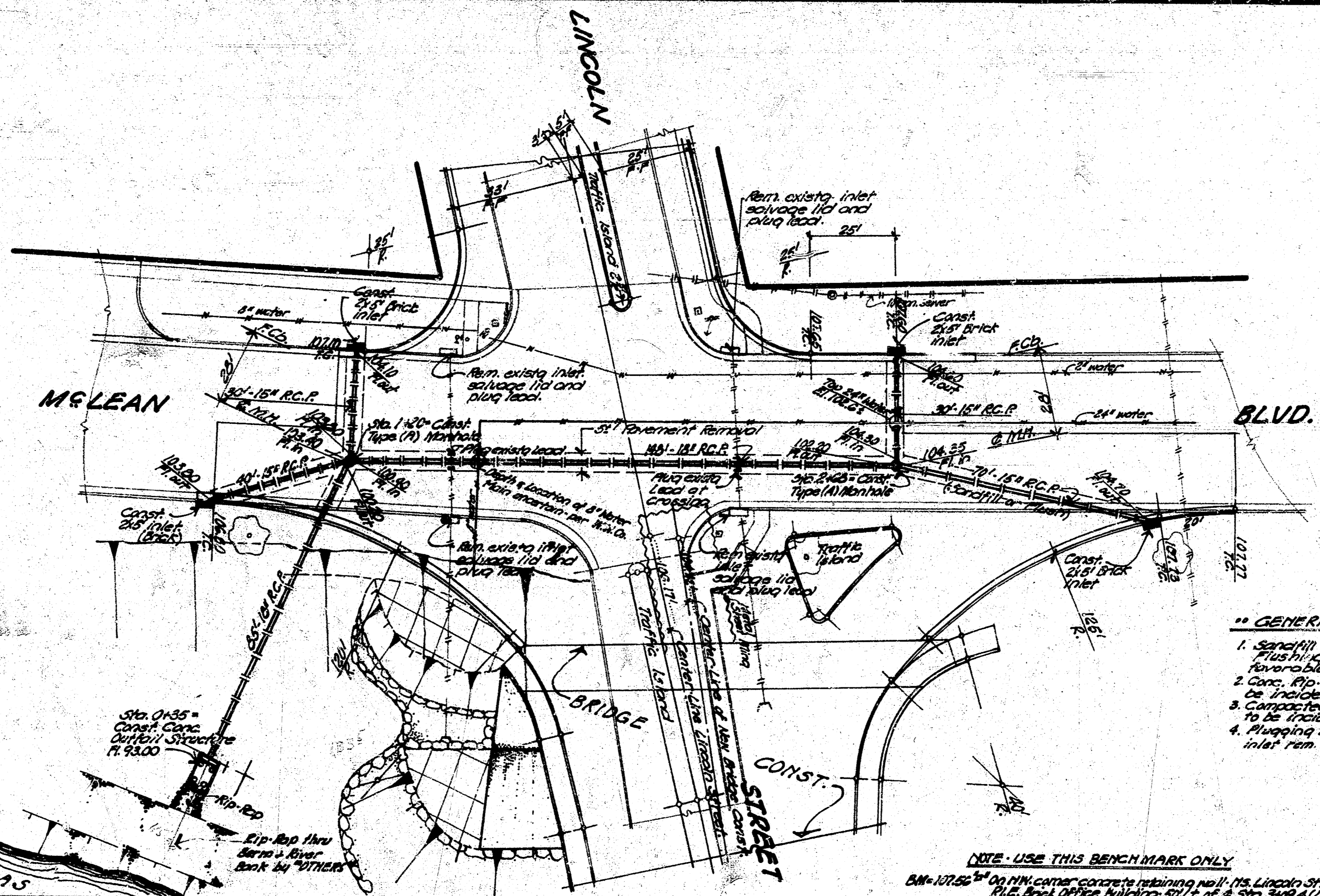


FRONT ELEVATION

SIDE ELEVATION



RIP-RAP of Outfall Structure
(Sloped Concrete)

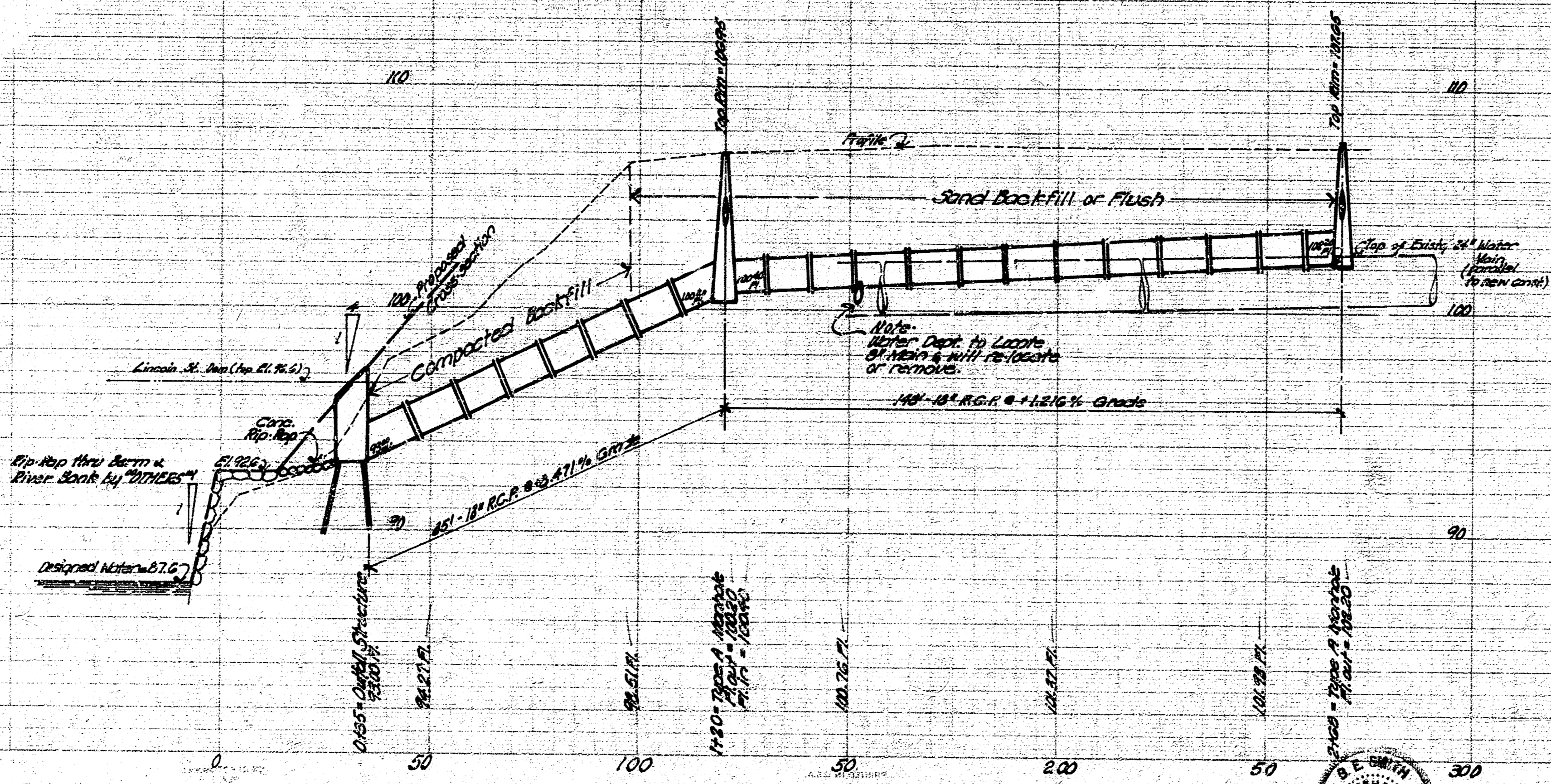


GENERAL NOTES

1. Sandfill all lines beneath proposed part or flushing may be used if conditions are favorable.
2. Conc. Rip-Rap of Outfall Structure to be incidental to project.
3. Compacted Backfill on East Bank River to be incidental to project.
4. Plugging leads & inlets to be a part of river bank stabilization.

NOTE - USE THIS BENCHMARK ONLY
 BM-107.56' On NW corner concrete building well N. Lincoln Street & E. 25th St. (City Office Building) S.W. of S. 25th St. (Lincoln St.)

Profile 11'-0\"/>



INCIDENTAL DRAINAGE IN CONNECTION WITH LINCOLN ST.
 At Midland Valley Railroad Right-of-Way to
 East Bank Arkansas River
 CITY OF WICHITA, KANSAS
 J.E. SMITH City Engineer
 Date - 10/1/1969 Proj. No. C-3-16

