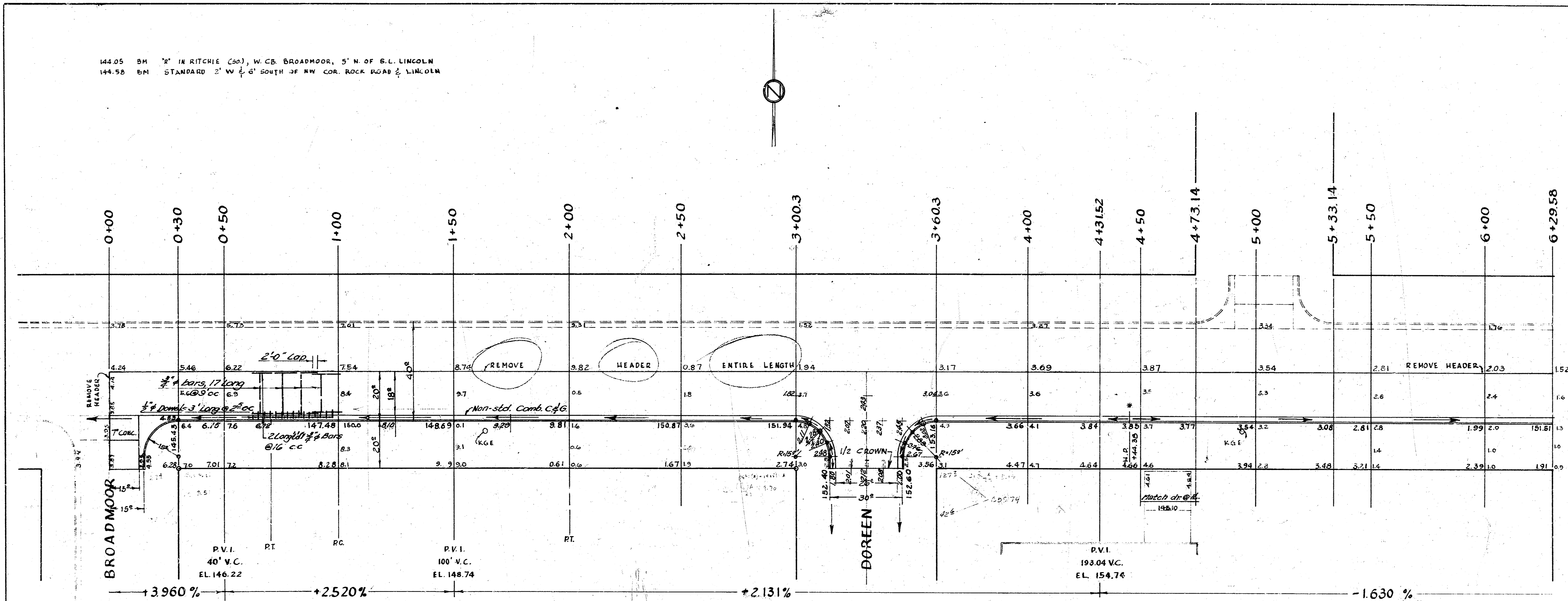
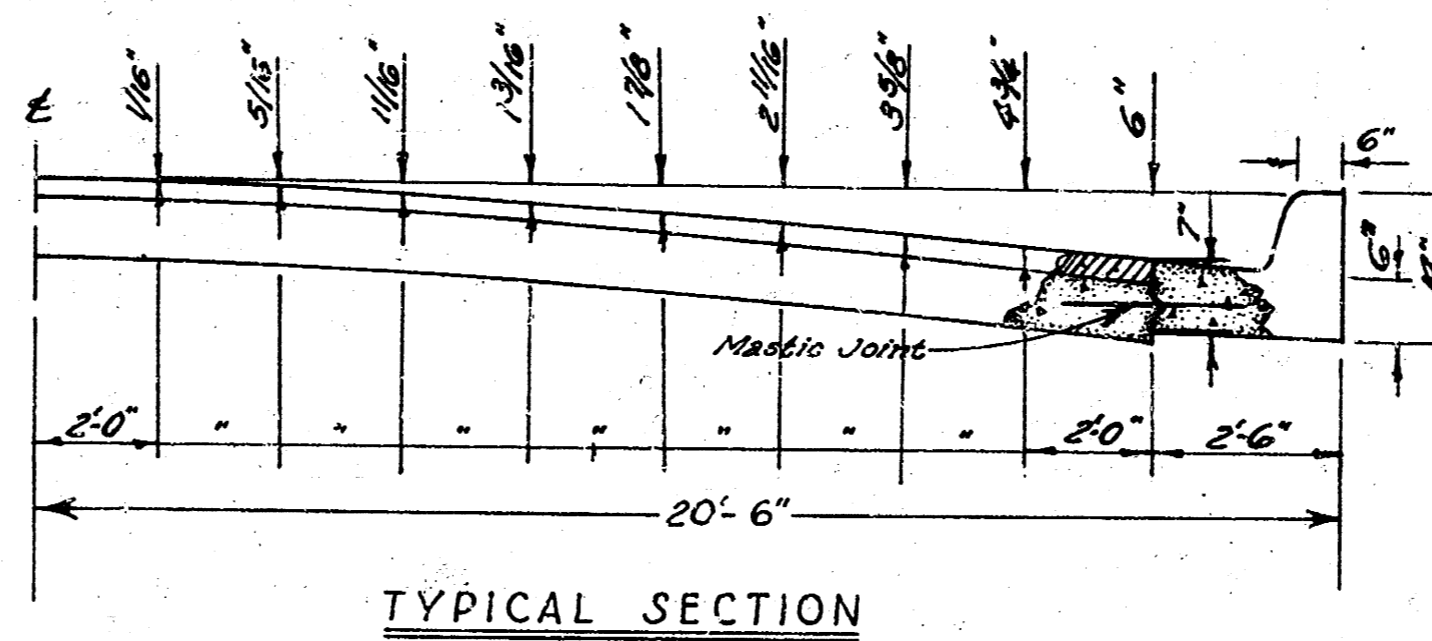


144.05 BM 7" IR RITCHE (Co), W. CB BROADMOOR, 5' N. OF S.L. LINCOLN
 144.58 BM STANDARD 2" W & 6" SOUTH OF NW COR. ROCK ROAD & LINCOLN



DRAWN BY: J.E.S.
 CHECKED BY: J.E.S.
 DATE: NOV 1960

EARTHWORK QUANTITIES	
EIC	552'
%100	1592'
TOTAL	1751'



S 1/2 LINCOLN ST.
 E BROADMOOR - W.L. ROCK RD
 18'-2'-20" A.C.
 (6" BASE)
 CITY OF WICHITA, KANS.
 B. E. SMITH CITY ENGINEER
 DATE: March 1961, PROJ. No. C10-107

