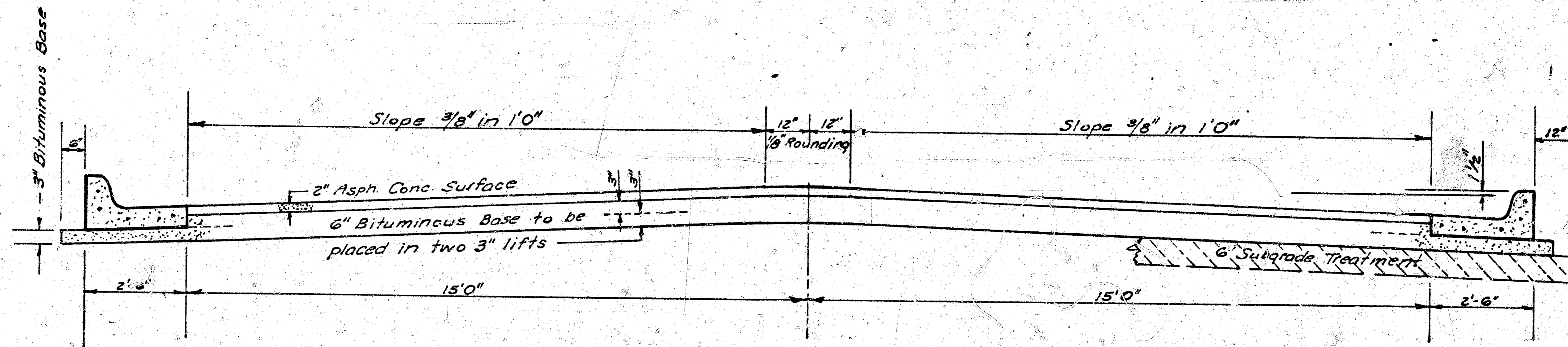


LINDEN

S.L. LOT 2 BLK. 1 QUAIL MEADOWS 2ND ADDN. TO N.L. QUAIL MEADOWS 2ND ADDN.

PROJECT NO. _____ DAKS 574057

472 76 245 80230 000 000 001



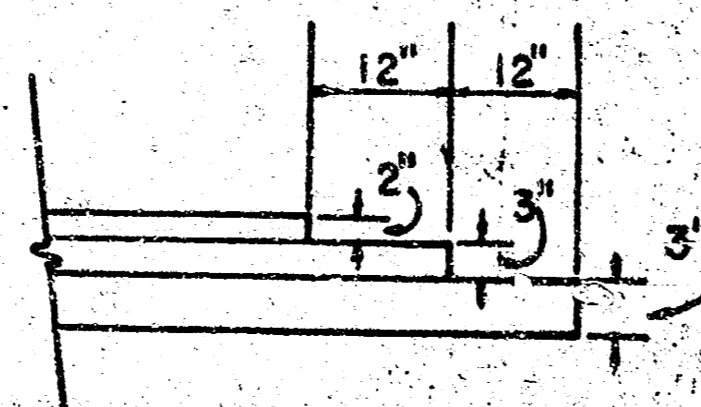
TYPICAL SECTION

35' ASPHALTIC CONCRETE PAVEMENT WITH BITUMINOUS BASE

A TACK COAT OF EMULSIFIED ASPHALT (SS-1H) SHALL BE APPLIED AT AN APPROXIMATE RATE 0.05 GALLONS PER SQ YD BETWEEN LIFTS OF ASPHALTIC MATERIALS WHEN ORDERED BY THE ENGINEER. TACK COAT WILL NOT BE PAID FOR DIRECTLY AND SHALL BE CONSIDERED AS SUBSIDIARY TO PRICE BID FOR ASPHALTIC PAVEMENT.

BITUMINOUS BASE AND ASPHALTIC CONCRETE WEARING SURFACE SHALL BE PLACED WITH A LAYDOWN MACHINE HAVING AUTOMATIC ELECTRONIC CONTROLS FOR CROWN AND GRADE. CONSTRUCTION JOINTS IN EACH LIFT SHALL BE STAGGERED A MINIMUM DISTANCE OF 1' WITH JOINTS IN PRECEDING LIFTS AND PLACED SUCH THAT A JOINT WILL BE CONSTRUCTED ON THE CENTERLINE IN THE TOP LIFT.

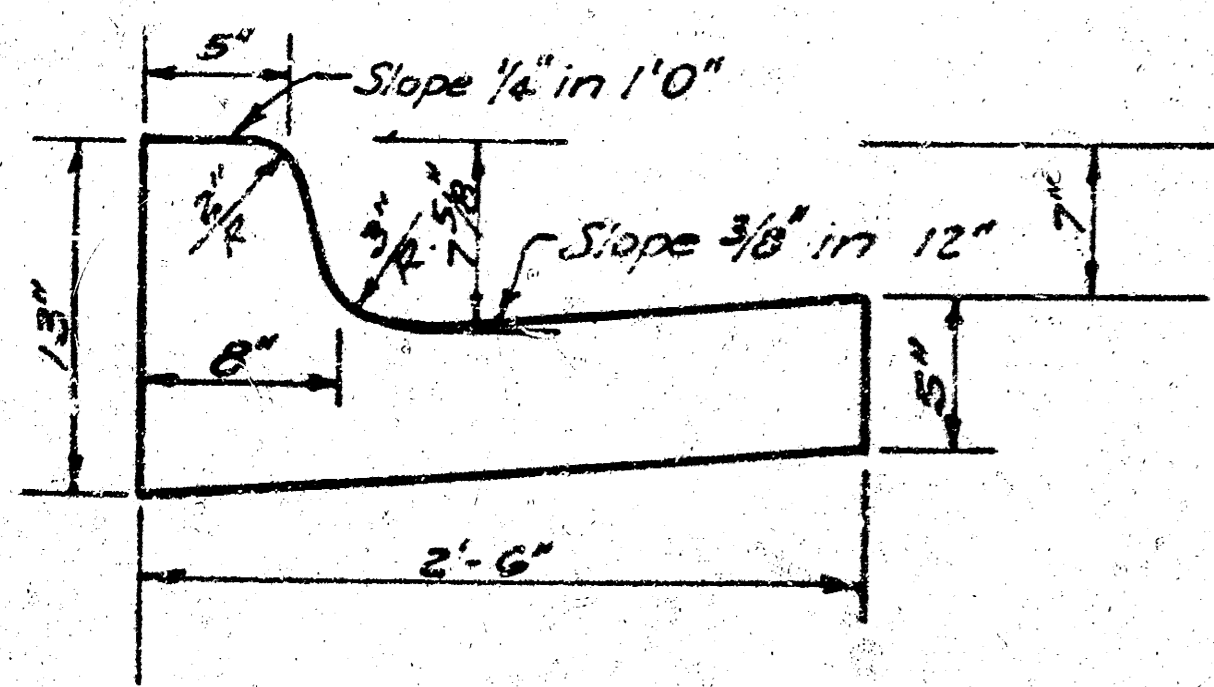
DETAIL OF TRANSVERSE CONSTRUCTION JOINTS



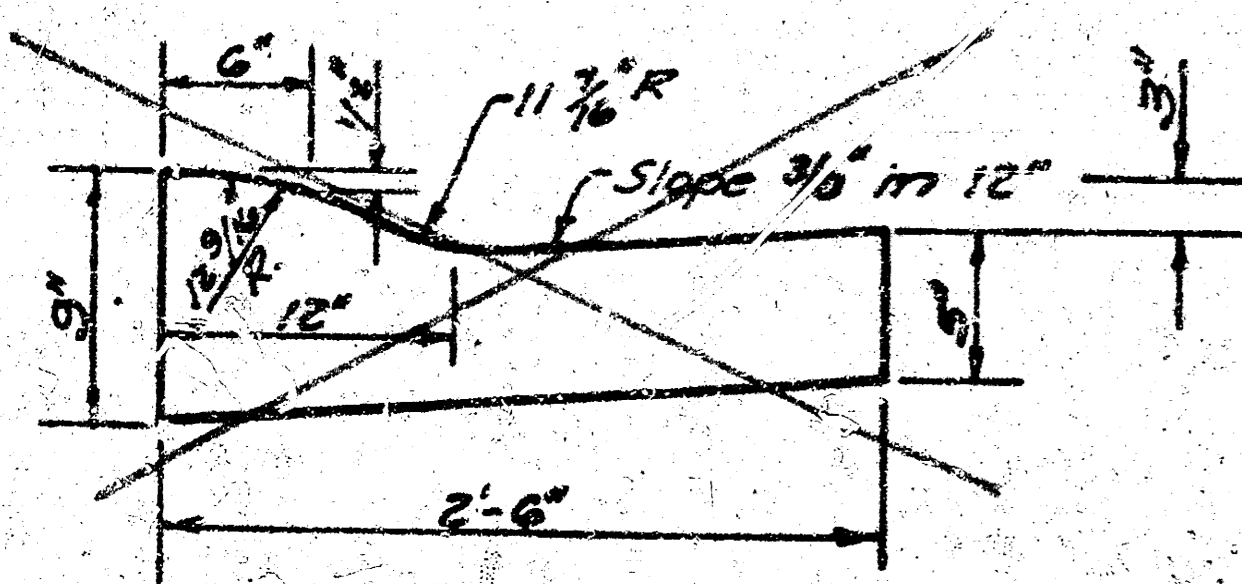
TRANSVERSE CONSTRUCTION JOINTS SHALL BE CONSTRUCTED IN FLEXIBLE BASE PAVEMENTS AT LOCATIONS WHERE PAVEMENT TEMPORARILY ENDS TO FACILITATE FUTURE PAVEMENT CONSTRUCTION AS SHOWN BY DETAIL. THE COST OF CONSTRUCTING THE TRANSVERSE CONSTRUCTION JOINTS SHALL NOT BE MEASURED OR PAID FOR DIRECTLY BUT SHALL BE INCLUDED IN THE BID PRICE FOR SQUARE YARDS OF ASPHALTIC CONCRETE PAVEMENT.

*The A.C. Pavement between the comb curb & gutter shall be paid as Sq.Yds. 8" A.C. Pavement (6" Bituminous Base).
The Bituminous Base under the comb curb & gutter shall be paid as Sq.Yds. 3" Bituminous Base.*

COMBINED CURB & GUTTER



ROLL TYPE CURB & GUTTER



CITY OF WICHITA KANSAS

DEPARTMENT of PUBLIC WORKS - Engineering

Division

R. W. LINN

CITY ENGINEER

DATE

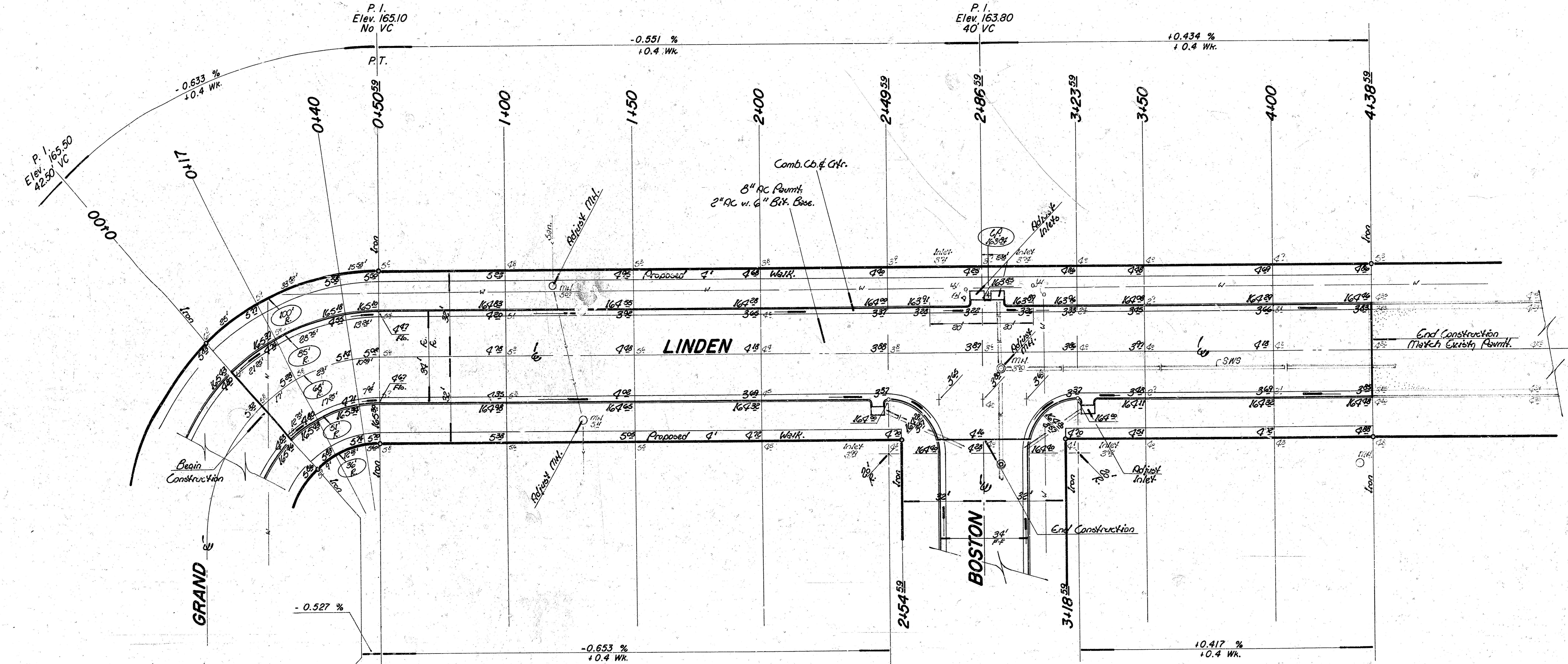
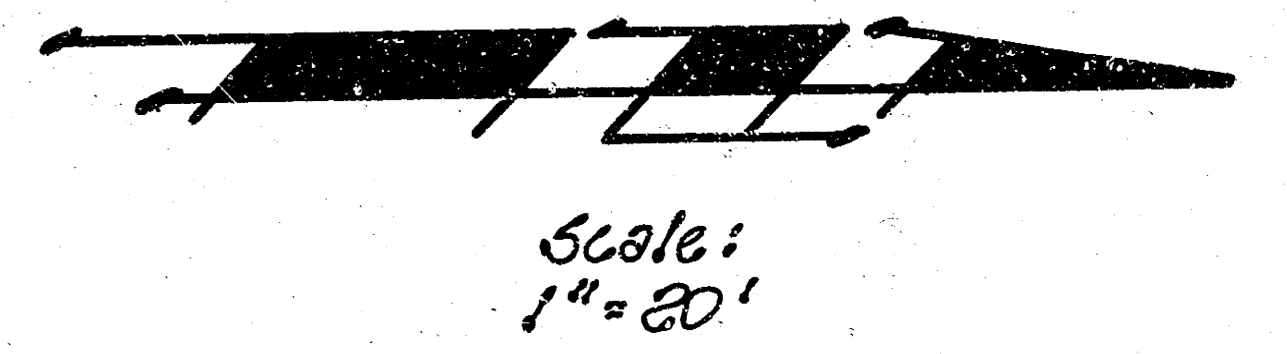
Proj. No. DAKS 574057

Original

BM. 161⁸² City 5th S. Side Harry 1/4 Mi. E. of Rock Rd.
 BM. 164⁸² Top C. Co. Linden 130' N. of N.L. Boston.

Baseline is to Linden.

Note:
 Contractor to verify 'ties' and shall replace any 'ties' either moved or destroyed during construction.



$\Delta = 42^{\circ}37'35''$ R. = 68' T. = 26.53' L. = 50.59' LC. = 49.43'

CURVE DATA BASED ON $\Delta = 42^{\circ}37'35''$ RAD. $A_2 = 21.1847'$

STA.	ARC.	CHORD LENGTH	DEFLECTION	TOTAL DEFLECTION
		Δ OFF C.B.	Δ OFF P.C.B.	
0+00	—	—	0'00"00	0'00"00
0+17	17'	23.8'	10.2'	7'09"43
0+42	23'	31.31'	14.42'	9'41"23
0+50.59	10.59'	14.47'	6.69'	4'27"41

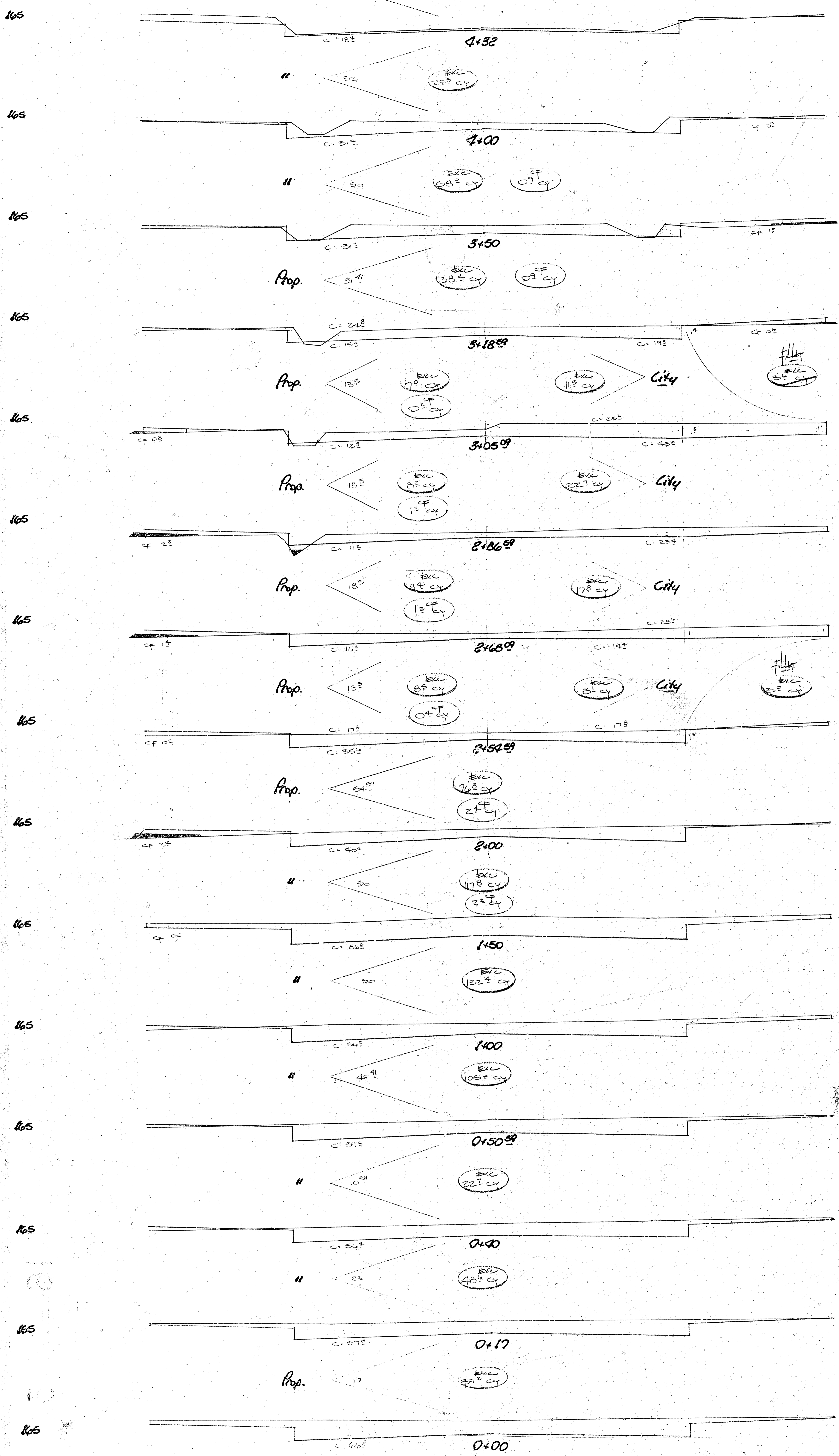
Earthwork Quantities

Property		City	
Excavation = 708 [±] cy	Comp. Fill = 9 [±] cy	Excavation = 66 [±] cy	Comp. Fill = 0
+ 10% = 778 [±] cy	+ 10% = 0 [±] cy	+ 10% = 62 [±] cy	
Total = 778 [±] cy	Total = 10 [±] cy	Total = 73 [±] cy	
Manipulation = 1671 [±] cy		Manipulation = 203 [±] cy	

SUB-GRADE
 TYPE OF SUB-GRADE TREATMENT SHALL BE DETERMINED BY THE FIELD ENGINEER. SUB-GRADE TREATMENT MAY CONSIST OF LIME TREATMENT, CEMENT TREATMENT, SUB-GRADE MODIFICATION, OR ANY COMBINATION OF THESE.

NOTE TO FIELD ENGINEER & CONTRACTOR
 Grade parking and clear right-of-way for proposed sidewalk. Compact fill in sidewalk areas. TO BE CONSTRUCTED BY "OTHERS".

LINDEN
 S.L. Lot 2 Blk 1 Quail Meadows 2nd to NL. Q.M.
 35' BB - 2" AC w. 6" Bit. Base & Comb. Cb-Gr.
CITY OF WICHITA, KS.
 R. W. Linn _____ City Engineer
 Project No. _____ DAKS 574057
 472 76 245 80230 000 000 001
 Date: _____



Earthwork
 Prop. Exc. - 708¹/₂ cy City 66¹/₂ cy
 CF - 92 cy 0 cy
 Linden
 56 Lot 1 BIR 2 Resil Mats End to N/G R. Mats End.
 DAK'S 574057