

0.4
 4.1
 67.6
 31.6
 25.3
 180.2
 18.3
 198.2
 156.8
 355.0
 City

Prop.
 157.4
 61.8
 40.4
 121.7
 81.3
 104.8
 103.1
 120.4
 82.8
 127.7
 1022.2
 106.2
 7.4
 1129.4
 1624.7
 2749.2
 City

MONTANA ST

WYOMING ST

19th ST

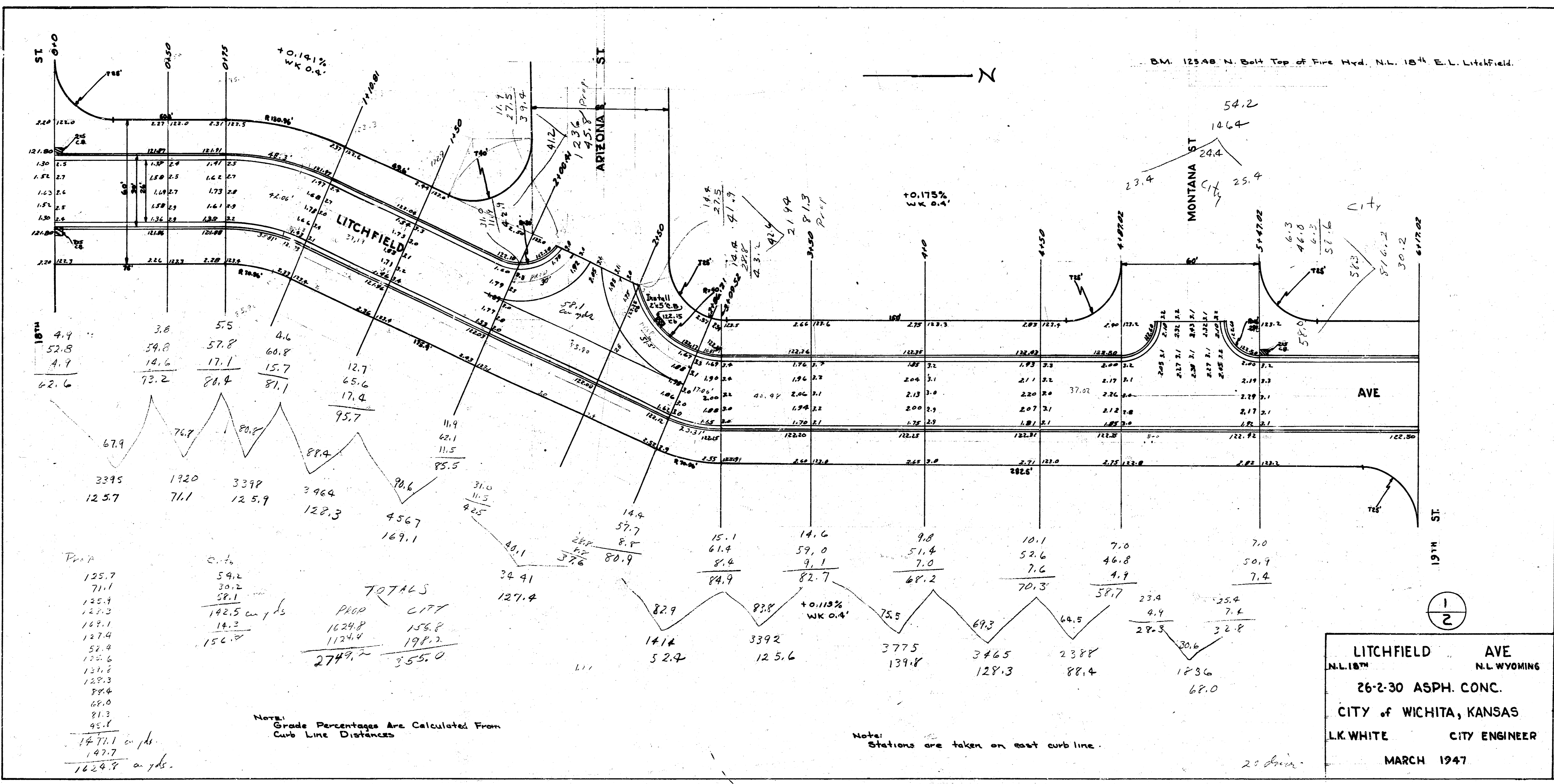
LITCHFIELD CITY PROP

AVE

NOTE: Stations are taken on east curb line

20

14 sheets



125.7
71.1
125.9
127.2
129.1
127.4
52.9
132.6
134.9
129.3
89.4
65.0
81.3
95.1
147.1 on 1/4"
147.7
162.9 on 1/4"

59.2
30.2
38.1
192.5 on 1/4"
14.3
156.8
2749.7
355.0

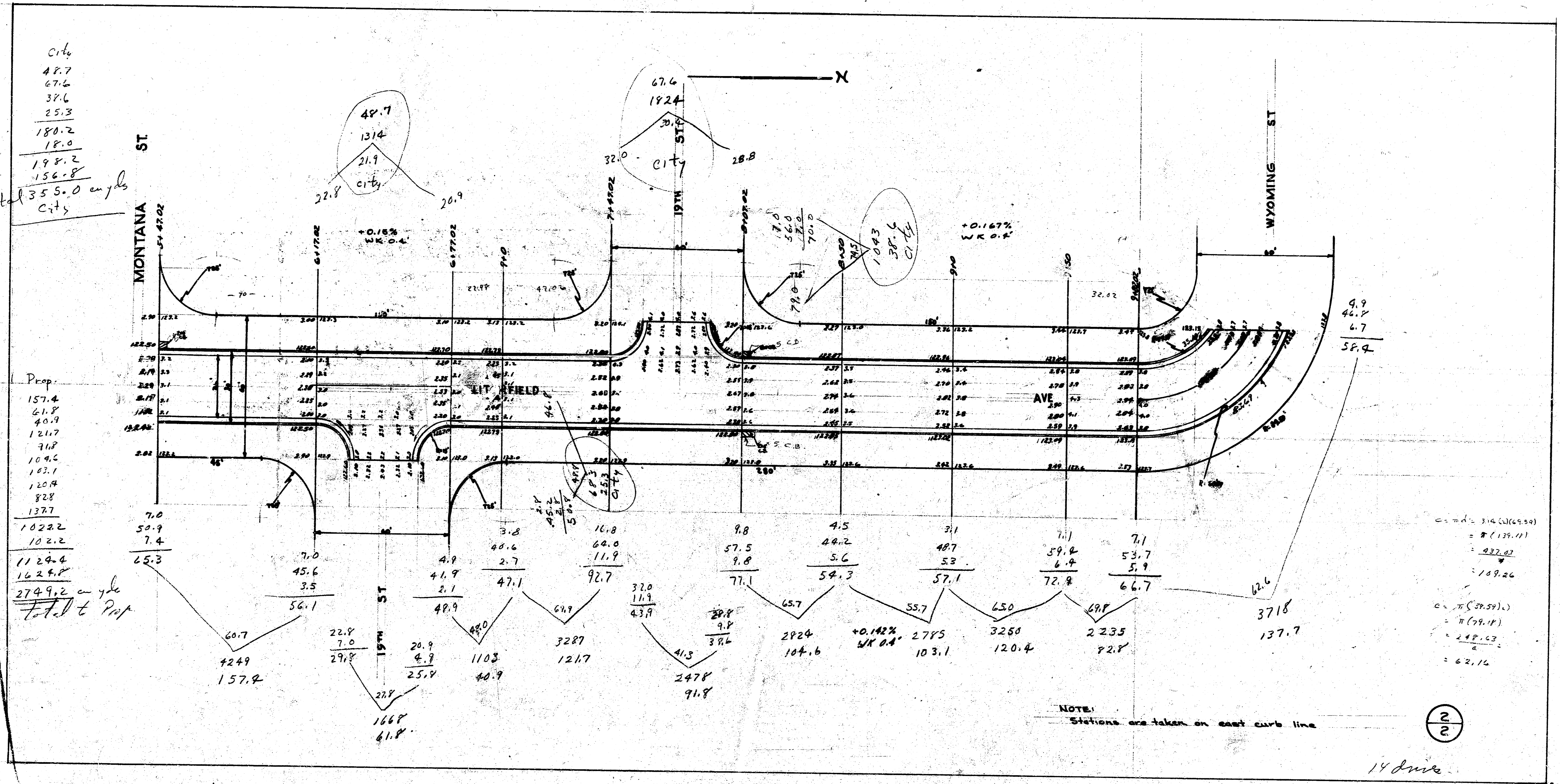
Note: Grade Percentages are Calculated From
 Curb Line Distances

Note: Stations are taken on east curbline.

20' Scale

City
 47.7
 67.6
 37.6
 25.3
 180.2
 18.0
 198.2
 156.8
 Total 355.0 cu yds
 City

Prop.
 157.4
 61.8
 40.9
 121.7
 91.8
 104.6
 163.1
 120.4
 82.8
 137.7
 7.0
 50.9
 102.2
 102.2
 7.4
 1129.4
 1629.8
 2749.2 cu yds
 Total to Prop



$c = \pi d = 3.14 (49.59)$
 $= \pi (129.11)$
 $= 422.02$
 $= 109.26$
 $c = \pi (39.59)$
 $= \pi (99.14)$
 $= 311.63$
 $= 62.16$

2
2

14 drive

4153 3