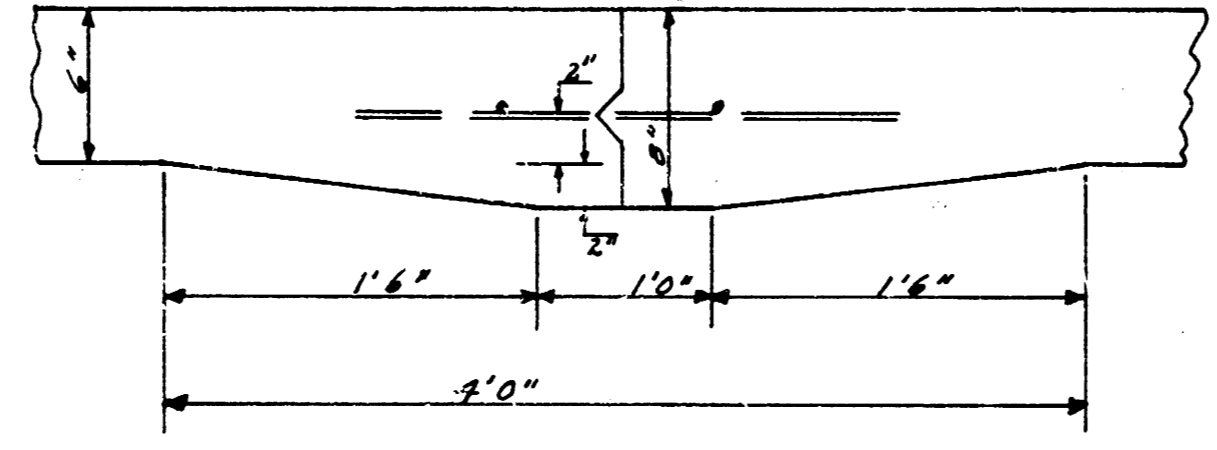
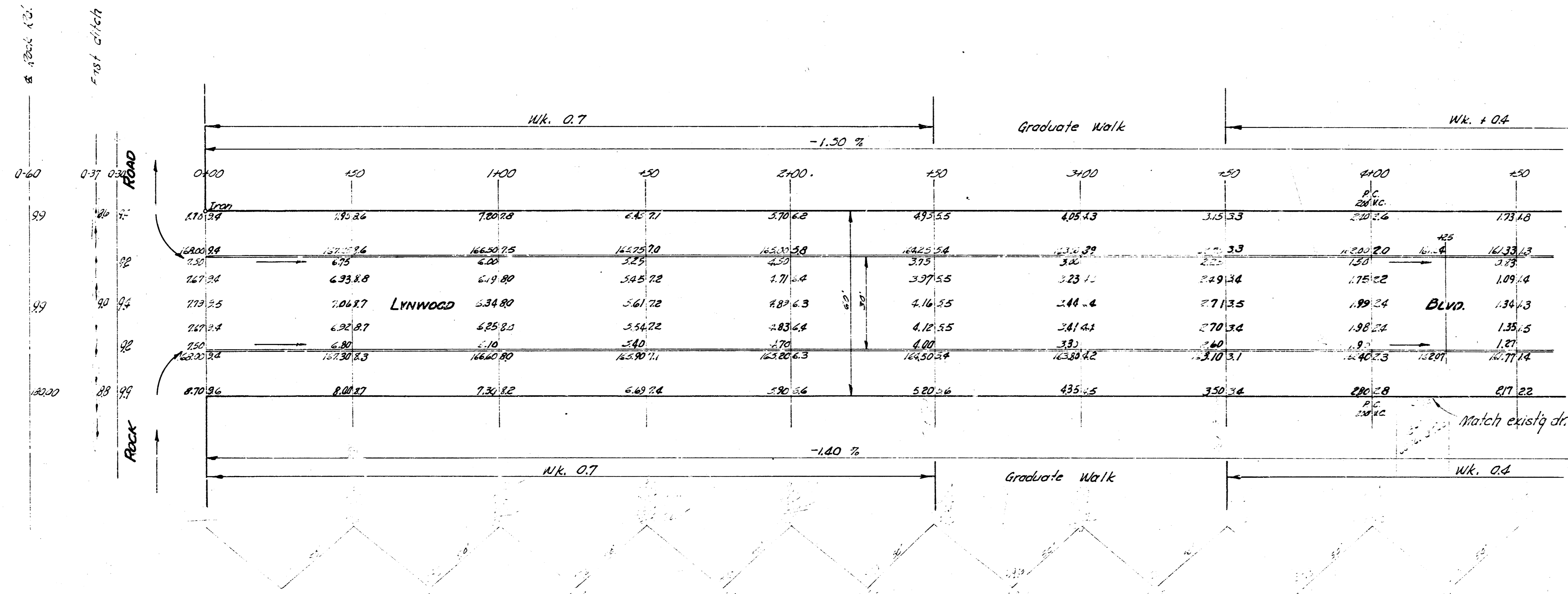
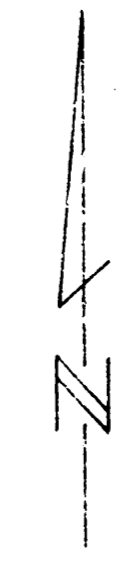


LYNWOOD BLVD.  
 Proj. No. C13-192  
 2/2

B.M. 17280 85° Spike E.S. Top pole W.S. Rock Road at S.L. Lynwood Blvd E.  
 Stationing on N.R.



**LYNWOOD BLVD.**  
 E.L. Rock Road to W.L. LOCHINVAR  
 30' CONC. & CB.  
 CITY OF WICHITA KANSAS  
 B.E. SMITH CITY ENGINEER  
 August 1924 PROJ. No. C13-132



1/2

B.M. 17280 85° Spike E.S. Top pole W.S. Rock Road at S.L. Lynwood Blvd E. Stationing on N.R.