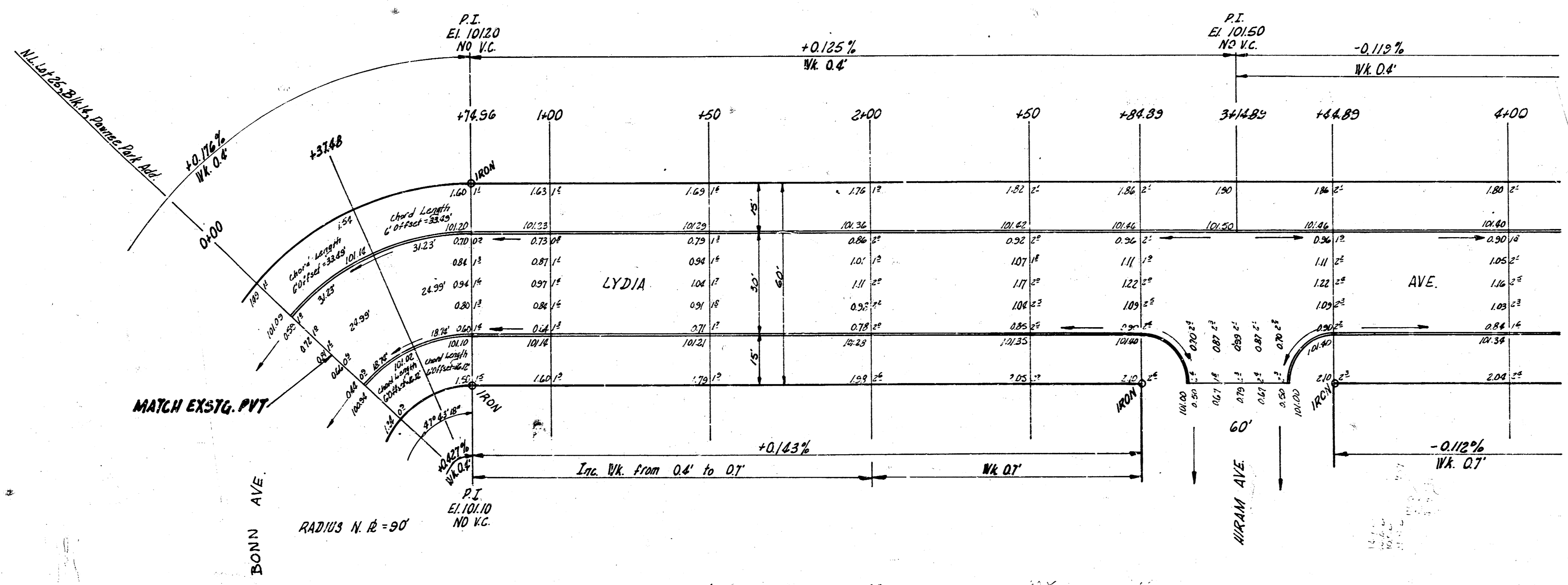


B.M. 104.27 SW cor 1st conc. strip No. 2156 Sa Glenn

Sta. on N. R.

PLAN  
 11/15/55  
 11/15/55



Young  
 11/15/55  
 11/15/55

1/2



LYDIA AVE.  
 N.L. LOT 25, BLK. 14, PAVNEE PARK  
 ADD. - W.L. GLENN  
 30' CONC. & CB.  
 CITY OF WICHITA, KANS.  
 B.E. SMITH CITY ENGINEER  
 AUG. 1955 PROJ. NO. C14-363

