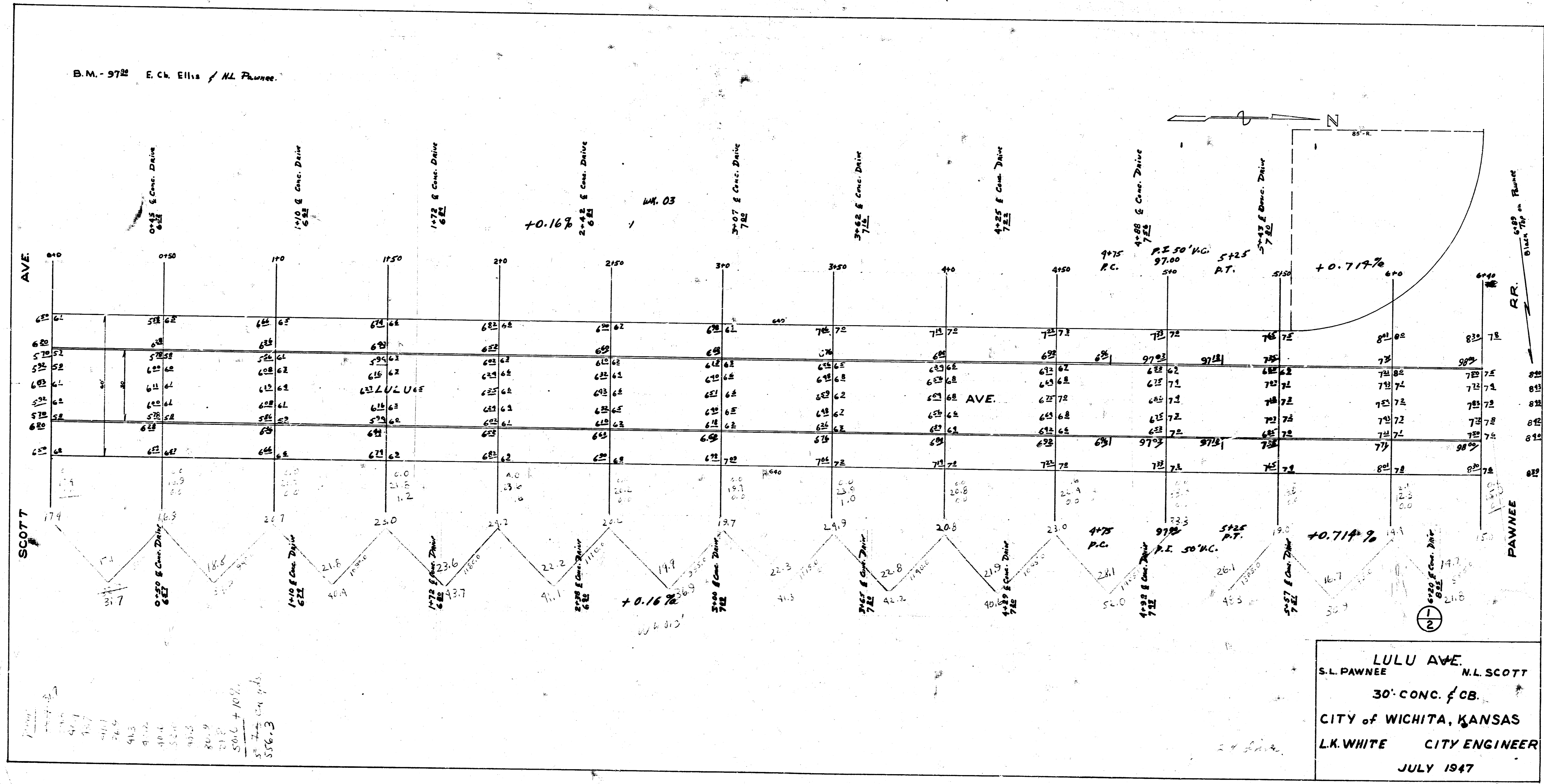


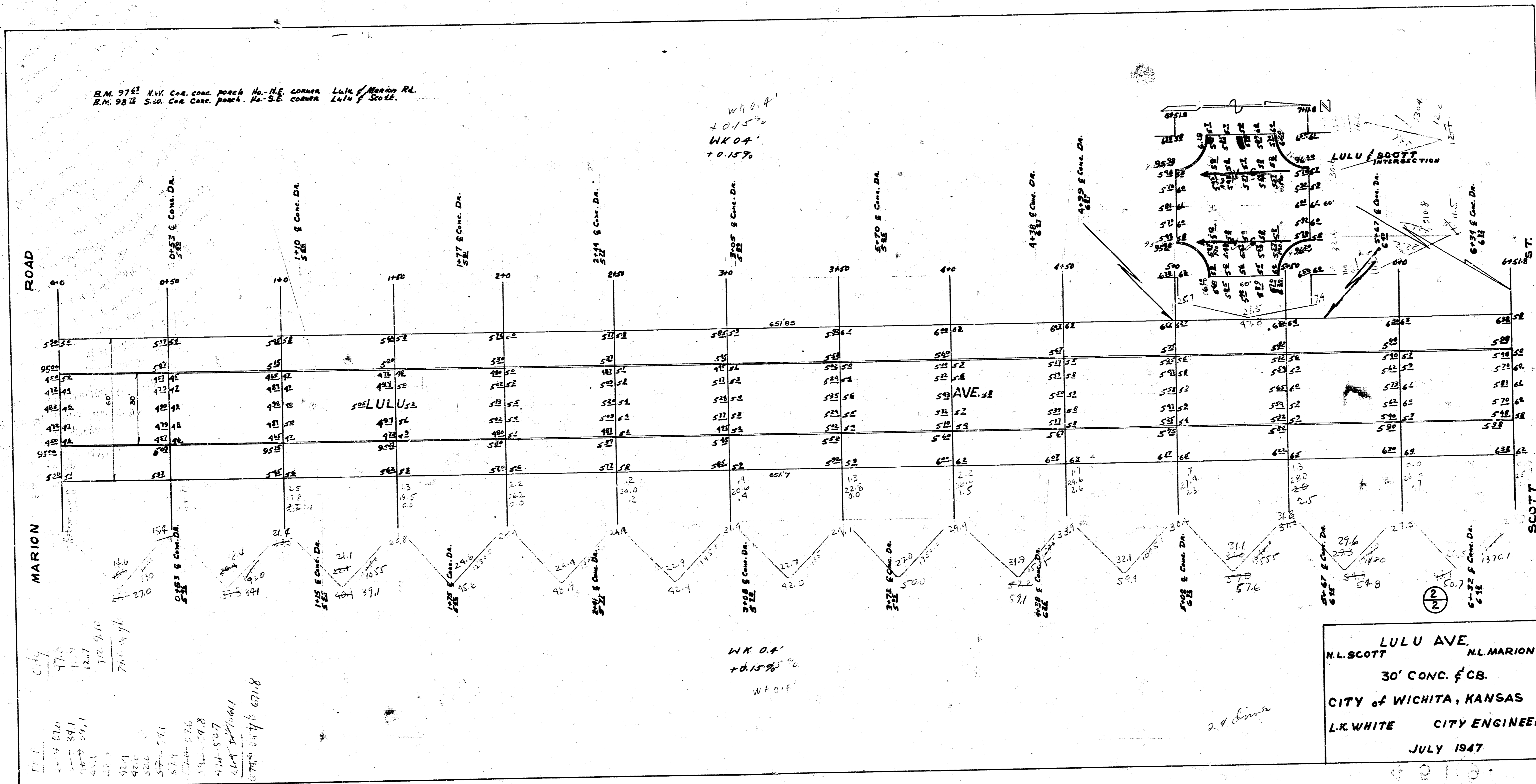
B.M. - 972 E. Ch. Ellis / N.L. Pawnee



LULU AVE.
 S.L. PAWNEE N.L. SCOTT
 30' CONC. / CB.
 CITY OF WICHITA, KANSAS
 L.K. WHITE CITY ENGINEER
 JULY 1947

B.M. 97 1/2 N.W. Cor. conc. porch No. N.E. corner Lulu / Marion Rd.
 B.M. 98 3/4 S.W. Cor. Conc. porch No. S.E. corner Lulu / Scott.

W.K. 0.4
 +0.15%
 W.K. 0.4
 +0.15%



City
 77.8
 12.7
 712.910
 761.396

1.1
 4.5 870
 1.5 841
 4.5 812
 4.5 783
 4.5 754
 4.5 725
 4.5 696
 4.5 667
 4.5 638
 4.5 609
 4.5 580
 4.5 551
 4.5 522
 4.5 493
 4.5 464
 4.5 435
 4.5 406
 4.5 377
 4.5 348
 4.5 319
 4.5 290
 4.5 261
 4.5 232
 4.5 203
 4.5 174
 4.5 145
 4.5 116
 4.5 87
 4.5 58
 4.5 29

W.K. 0.4
 +0.15%
 W.K. 0.6

LULU AVE.
 N.L. SCOTT N.L. MARION
 30' CONC. & CB.
 CITY OF WICHITA, KANSAS
 L.K. WHITE CITY ENGINEER
 JULY 1947